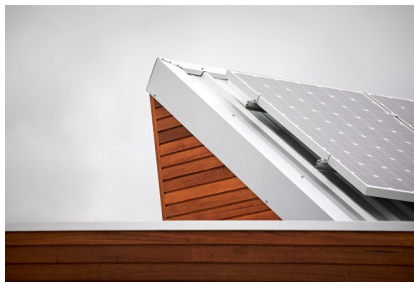


# PROJECT PROFILE

## BENDIGO BANK NEERIM SOUTH



### CLIENT

> Neerim District Financial Services

### LOCATION

> Neerim South, Victoria

### ARCHITECT / DESIGNER

> Neerim Project Design

### VALUE

> \$750k

### SUMMARY

> Set in the farming town of Neerim South, the building design incorporated features, finishes and a colour palette to compliment the surrounds. Construction required imported aerated ceramic Clinka blocks and extensive exterior cladding of locally sourced and milled silver-top gum. The scope of works included the complete interior fit-out with internal glazed partitions. Outside, the contract included various stainless steel items, the ATM installation, solar panels on the roof and integration into the existing street scape with exposed aggregate feature paving.

### CONSTRUCTION HIGHLIGHTS AND TECHNIQUES

- > Imported aerated ceramic Clinka blocks
- > Internal fit-out with aluminium glazed partitions
- > Extensive, decorative, milled silver-top gum facade

