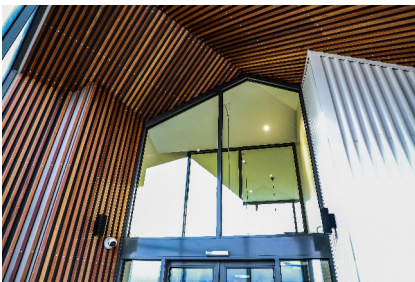


# PROJECT PROFILE

## Warragul ELC



### CLIENT

> Baw Baw Shire Council

### LOCATION

> Warragul, Victoria

### ARCHITECT / DESIGNER

> Cohen Leigh Architects

### VALUE

> \$3.20m

### SUMMARY

> Set in undeveloped land adjacent a primary school, the Warragul Early Learning Centre was built in a secure construction site while the school was operational. The Warragul ELC building itself represented 500 sqm of land with a similar area allocated to a car park extension, playground and other civil facilities. To cope with the steep site, the foundations were multi-levelled and included precast panels for the interconnecting ramp-work. The scope included a full joinery and internal fit-out completed in detail. Works were completed on-time and within budget.

### CONSTRUCTION HIGHLIGHTS AND TECHNIQUES

- > Live and operational secure site in a primary school
- > Exposed structural steel continuing from interior to exterior
- > Feature 40 x 40 spotted-gum timber work in entrance / foyer
- > Complex circular window installation on internal and external walls

