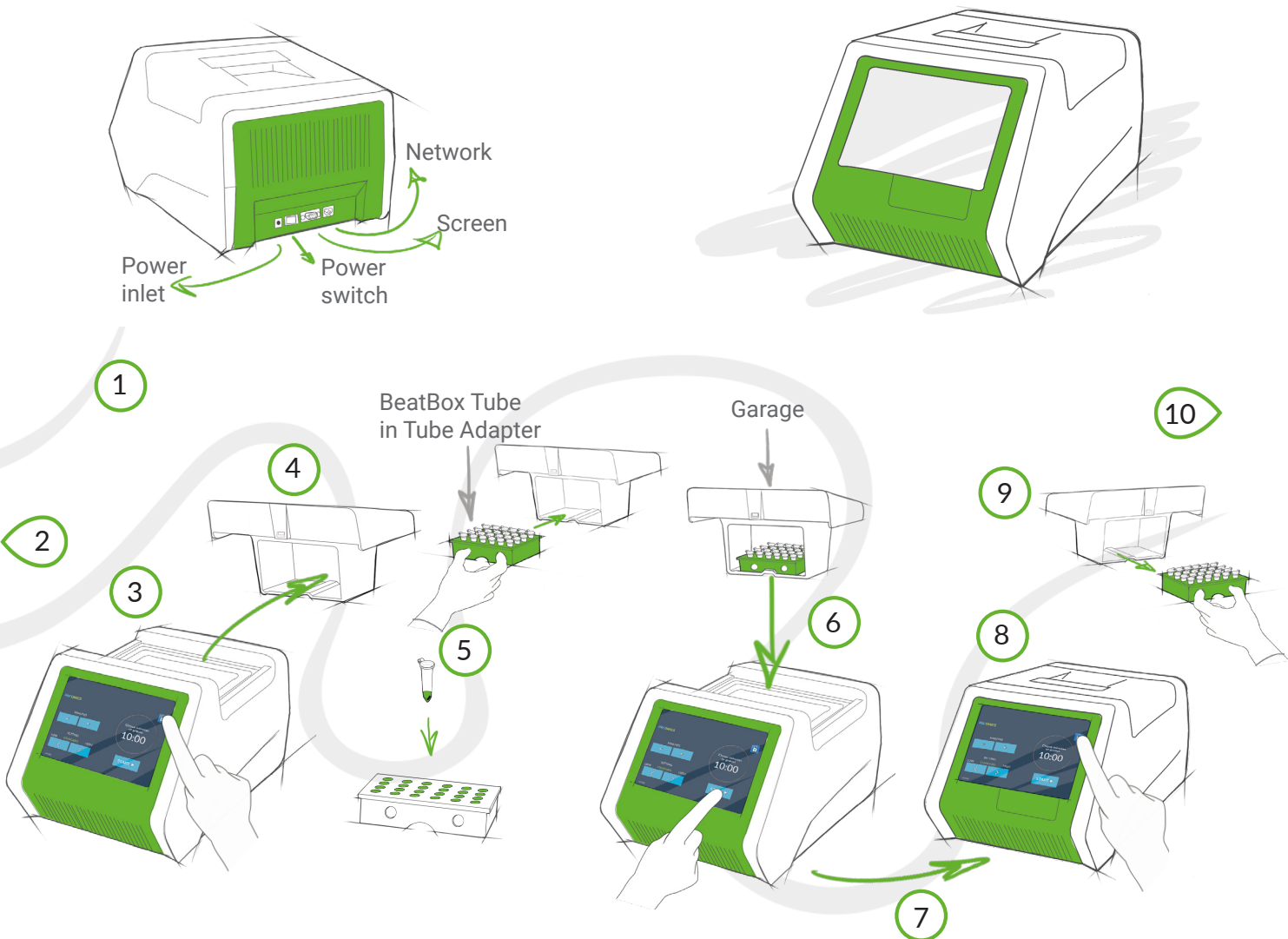


## BeatBox Quick Start Manual 24x



- 1 Connect the power cable and switch on
- 2 Perform sample preparation "Before a BeatBox run" (see reverse)
- 3 Unlock and open the BeatBox
- 4 Take the Garage out of the BeatBox
- 5 Place the BeatBox Tube in the Tube Adapter and insert in the Garage
- 6 Insert the Garage in the BeatBox, select suitable settings for your samples and press START
- 7 Unlock and open the BeatBox when homogenization run is complete
- 8 Take the Garage out of the BeatBox
- 9 Remove the Tube Adapter from the Garage
- 10 Continue with your sample preparation (see reverse)



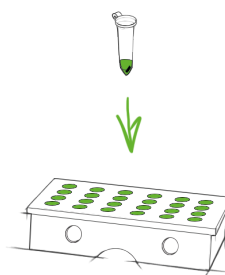
## Before a BeatBox Run



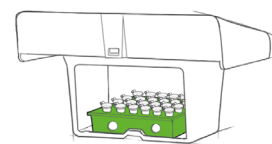
- 1 Carefully open the BeatBox Tube



- 2 Add the sample to the BeatBox Tube



- 3 Close the BeatBox Tube and place it in the Tube Adapter



- 4 Move over to the BeatBox and start process

## After a BeatBox Run



- 1 Take the BeatBox Tube out of the Tube Adapter and briefly centrifuge



- 2 The sample can directly be transferred from the BeatBox Tube to continue with sample preparation process



- 3 Recycle where possible