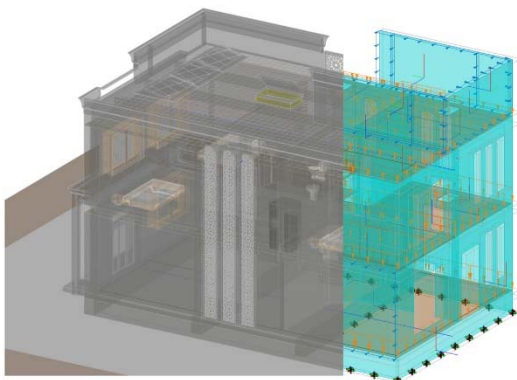


WoSH

The company WoSH - World of Smart Homes is currently working on a production model for the economic and at the same time individual user-oriented series production of houses. The core is the central BIM model of the building which contains the relevant information of all elements. This procedure allows, for example, by using Virtual Reality, the user-friendly configuration of the selected house model by the buyer. Thus, all production-relevant information can be used in a central production facility to manufacture the building elements with a maximum degree of integration and prefabrication, to bring them to the construction site and to erect them there with a well-coordinated assembly date in a short time. The declared aim is to deliver optimum quality in the shortest possible time at controlled costs. AR Ingenieure supports the development of this concept by preparing the necessary processes in planning, production, transport and assembly at the detail level. For example, the parametric adaptation of the curtain wall to different building shapes was realized by a REVIT plugin and a flexible fastening system was developed for this purpose.



Project details:

Year: 2018

Location:

Building owner:

Client: WoSH GmbH

Services:

Development of digitally consistent planning of type buildings. Integration of building services engineering for the production of highly integrated and prefabricated components.

Development of a customer-oriented REVIT PlugIn for the parametric planning and production of elementary components.

Other parties involved:

redbloccsystems, Progress Group, Güdel

