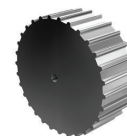
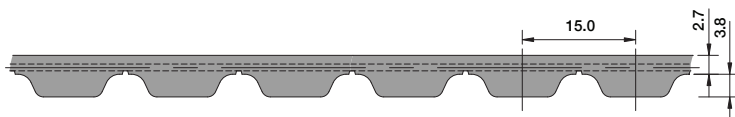
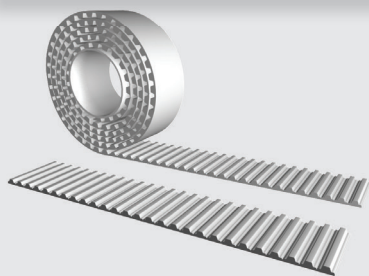


# ATS15

## M ATS-SERIES



### Open-Ended "M"



### Specifications

<b>Widths (mm)</b> In between widths available	25	32	50	75	100	150
<b>Lengths</b>	Any lengths available - Stock rolls 50 meters					
<b>Available Options</b>	Nylon coating tooth side (PAZ)					
<b>Tension Member Options</b>	Steel standard					
	Hi-flex steel					
	VA301 Stainless steel					
	VA316 Hi-flex Stainless steel					
	Kevlar®					

### Maximum allowable tensile strength

Belt Width	25	32	50	75	100	150
Open Ended - M Steel Cord	6,765 N	8,650 N	13,530 N	20,295 N	27,050 N	40,590 N
Open Ended - M Stainless Steel Cord	5,390 N	6,900 N	10,780 N	16,170 N	21,560 N	32,340 N

### Product Performance

Power Transmission	Rotational Speed	Peripheral Speed	Synchronous Pulley	Applications (Example)
≤ 160 kW	Approx. 8000 min <sup>-1</sup>	Approx. 48 ms <sup>-1</sup>	From z=25	Power drives, paper-making machines, high-bay storage, lifting equipment

### Minimum Number of Pulley Teeth and Idler Diameter

Pitch (mm)	Min. # of Pulley Teeth (no back bending)	Min. # of Pulley Teeth (with back bending)	Min. Diameter of Flat Idler running on tooth side (mm)	Min. Diameter of Flat Idler running on belt back (mm)
ATS15	25	40	120	250

### Standard Material

TPUST1<sup>2)</sup>

### Ordering Example: Polyurethane Timing Belt

[WIDTH] [PITCH] / [LENGTH] [CONSTRUCTION]  
50 ATS15 / 5295 M