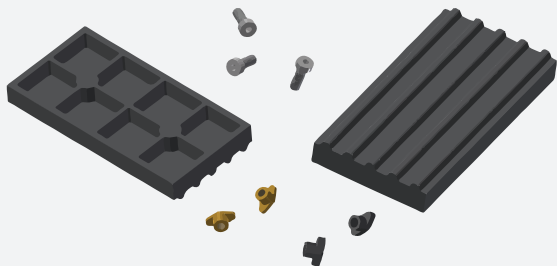


BRECOflex CO., L.L.C.

High Precision Drive Components

ATN Belt Profile Installation Instructions



Contact us for customer
service and free technical support!

(732) 460-9500
info@brecoflex.com
www.brecoflex.com

Information on Profile Installation

To prevent the inserts from being twisted during profile installation, push the inserts into the belt tooth cavities and place the belt on the toothed mounting plate provided. When tightening the profile screws, the mounting plate will hold the insert in place and prevent it from twisting. Be sure to tighten screws to the recommended torque to prevent the insert from coming loose or from overtightening.



ATN Assembly Fixture Instructions:

- 1) Place inserts in belt tooth cavities
- 2) Position belt in assembly fixture
- 3) Screw down profile observing max tightening torque spec. catalog B209 pg.8

