



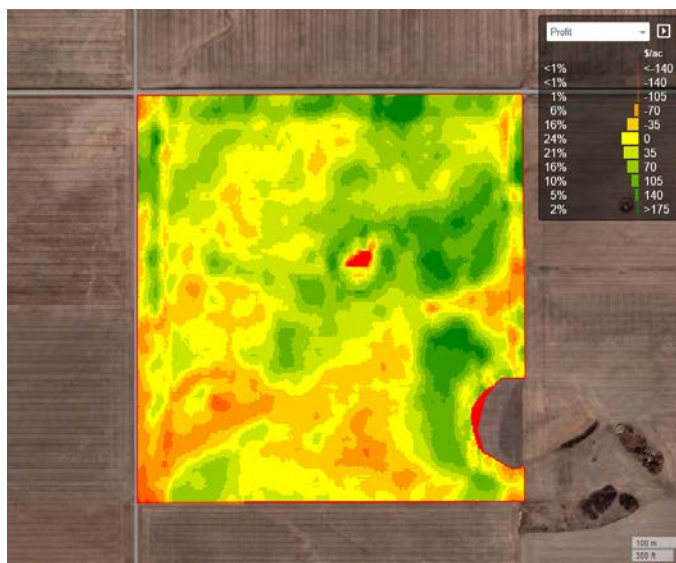
## Profit Mapping with FieldSmart™



Profit mapping with the Western Sales FieldSMART team is a valuable tool for optimizing profitability on your farm. Input costs, including seed, fertilizer, and pesticides play a significant role in this.

Profit mapping allows you to assess these costs and determine whether they align with your expected returns. Through data management, precise field zoning, unbiased crop input prescriptions, crop scouting, and analyzing variability in yields throughout the field, we can help you identify target areas that have the potential to maximize yield with optimized inputs.

In areas deemed trouble zones, where yield is historically lower or has other issues such as salinity, decisions can be made whether to try to bring these areas up to optimal production capacity or to pull back on inputs to reduce costs in these areas.



Financial Performance	
Parameter	Value
Acreage	160.3 ac
Average Yield	42.11 bu/ac
Profit	\$45.11 /ac
ROI	18.3%
Margin	15.4%
Production Efficiency	169.9 bu/\$1000
Acreage Opportunity Ratio	23.1%
Working Capital Opportunity	\$9,073.91
Breakeven	\$5.88 \$/bu
Total Field Expenses	\$39,587.54
Total Field Revenue	\$46,820.67
Total Profit	\$7,233.13

Your return on investment is one of the most important numbers in your operation. The products you apply and how you apply them can have a large impact on your farm's return on investment. Our agronomists can help ensure that your crop health and overall farm practices are the best for the given growing season and future seasons.

Our FieldSmart Agronomists will work with you and determine the best solution for your land.

Contact us at [fieldsmart.ca](https://fieldsmart.ca) or call your local Western Sales Dealership.

Rosetown

Elrose

Davidson

Biggar

Outlook

Central Butte

1-877-676-9600



western sales



Platinum member

Follow us on:



## 3330SE & 3335QDA

### ParaLink Hoe Drills™



## BUILT TO SUIT YOUR SEEDING SITUATION

The 3330SE and 3335QDA are the 3rd generation of the highly successful ParaLink Hoe Drill™. Updated frame designs with an expanded range of options ensuring steadfast service each and every season.

Choose from the many available independent hoe drill options that allow you to adapt to your conditions in the best possible way.

1

#### 2 FRAME OPTIONS

3330 Standard Edition  
3335 Quick Depth Adjust

2

#### 3 OPENER OPTIONS

ParaLink Single™ Opener  
ParaLink Extreme™ Opener  
ParaLink Dual Shank™ Opener

3

#### 3 FERTILIZER APPLICATION OPTIONS

Mid Row Bander® ID  
Mid Row Bander® III  
Mid Row Shank™ III

4

#### ADDITIONAL VALUE-ADDING OPTIONS

AccuSet™ Depth Adjust  
TriMax™ Triple-Shoot  
Hi-Flotation™

[www.bourgault.com](http://www.bourgault.com)



 **western sales**



**western sales**  
**westernsales.ca**

Follow us on:



# EASY AS 1,2,3



Save a bundle, with a bundle, on Genuine John Deere Parts.

- **PICK 3** or more combine parts categories.
- **PURCHASE \$200** minimum of parts in each category.
- **SAVE 15%<sup>1</sup>** on all parts in your selected categories.

Now that's a simple way to get big savings. Valid through 8/31/23.



KNIFESECTIONS



KNIFE GUARDS



CHOPPERKNIVES



AUGERS



DRAPER BELTS

Contact us today!

\*Some restrictions apply

GET SUPPORT RIGHT AWAY IN THE BUSY SEASON!

## EXPERTCONNECT™



- Submit Support Tickets
- Text or Call our Team for Updates
- Live Chat Support
- On the Spot Technical Support



**1-306-518-2270**



**S3 | AWS AIRBAR**

more **yield**  
from your **field**

with air-assist harvesting

Using a high-velocity air stream, the S3 AWS Airbar increases the yield from your field by moving your crops quickly and cleanly from the knife and dramatically reducing shatter loss. Driven by a quiet and efficient fan, a simple serviceable belt drive system ensures that your harvest stays on track.

**Reduce shatter loss**  
**Improve crop flow**  
**Faster ground speeds**  
**Increase operating efficiency**



**Without Airbar® System**



**With Airbar® System**



Learn more at [awsairbar.com](http://awsairbar.com)

**MacDon**

**BIGGER. FASTER. FLEXIER.**

More Capacity. More Speed. More Flex. The all-new FD2 gives you more of everything you need from the company that brought you the Original FlexDraper®.

\*Compared to previous model.

 **20%**  
More Capacity\*

 **30%**  
More Speed\*

 **70%**  
More Flex\*



**Scan Here for More!**  
Find your dealer at [MacDon.com](http://MacDon.com)



# Why consider fall tillage?

It can improve your bottom line.

- Incorporates organic matter back into the soil, feeding soil microbes and improving soil health.
- Breaks up hardpan to encourage strong root growth and allow spring snow melt to soak in.
- Suppresses stubborn weeds and reduces the possibility of chemical resistance.
- Aerates the soil, allowing oxygen and nutrients to flow through and feed microbes.
- Exposes black soil, warming soil quicker in the spring and promoting faster germination.
- Smooths uneven ground and wheel ruts while drying out wet fields.
- Saves time in the spring by applying fertilizer with fall tillage.



## BLUE ARMOUR™ SWEEPS

- **24-40% longer wear life.**
- Available in bolt-on, 200 & 410 Series *Speed-Loc™* sweeps and spikes.

## MAX LIFE™ HARROW TINES

- **Up to 6X longer wear life.**
- Tungsten carbide is mixed directly into the molten weld bead and applied to the tip of the tine.
- Degelman OEM Original and tines to fit Bourgault, Brandt, CNH/Flexi-Coil, Elmer's, Gates, John Deere, Morris, Rite Way, Salford & Summers/Herman.

## NON-FREEZE FERTILIZER KNIVES

- Prevents build up on the knife to reduce ground disturbance and minimize gassing off.
- Available in bolt-on, 200 & 410 Series *Speed-Loc™* knives.

## SPIKES

- Ideal for primary tillage and banding fertilizer.
- Available in bolt-on, 200 & 410 Series *Speed-Loc™* products with or without MAX LIFE™ tungsten carbide.

## NIAUX 200 DISKS

- **20-40% longer wear life.**
- Retains a sharp cutting edge.
- 3 zones of hardness for increased flexibility, durability and maximum wear.
- Degelman Pro-Till and Bourgault MRB OEM original and blades to fit AgPro, Amity/Concord, CNH, Great Plains, John Deere, Lemken, Norwood, Pillar, Salford, Summers/Herman & Yetter.

For the most current selection of products to fit your machine, talk to a Western Sales dealer.

Bourgault Tillage Tools

[tillagetools.ca](http://tillagetools.ca)



Platinum member

**western sales**  
**westernsales.ca**

Follow us on:



\*Note: All Used Equipment Listings are subject to change or being sold at the time of print.  
Contact your dealership for details.

# Used Equipment Classifieds6

## COMBINES:



**'21 JD S780.....\$616,000**  
541sephrs, Hyd F/A CM, Adv. Chopper, 4600, 650/85R38D, 750/65R26, LED, 28.5' Auger, Active Terrain, PowerFold, Leather, JDLink, PowerGard, Combine Advisor, Tough Grains Package, Combine AutoLuber, No Platform. Extended Warranty



**'19 JD S780 (2 Available) .....\$485,000**  
971sephrs, Hyd F/A CM, Adv. PC Chopper, 4600, Automation 3.0 & Antenna, 650/85R38D, VF750/65R26, LED, 28.5' Auger, PowerFold, Leather, JDLink, PowerGard, Combine Advisor, Small Tough Grains Extended Wear Package, Extended Wear Grain Handling, No Extended Display, Small Wire, Grain Tank Mirror, No Platform.



**'19 JD S780 (2 Available) .....\$465,000**  
1120sephrs, Hyd F/A CM, Redekop Chopper, 4600, Premium 3.0, Firestone 650/85R38D, 750/65R26, LED, 26' Auger, Manual Fold, JDLink, Combine Advisor, Small Tough Grains, Copper-head Concave, PowerGard, No Platform.



**'19 JD S780 (3 Available) .....\$465,000**  
1140sep/hrs, Hyd F/A CM, Adv. PC Chopper, 4600, Premium 3.0, 650/85R38D, VF750/65R26, LED, 28.5' Auger, PowerFold, Leather, JDLink, PowerGard, Combine Advisor, Small Tough Grains, Ext Wear Grain Handling, No Platform.



**'19 JD S780 .....\$465,000**  
1169sep/hrs, Hyd F/A CM, Adv. PC Chopper, 4600, Premium 3.0, 650/85R38D, VF750/65R26, LED, 28.5' Auger, PowerFold, Leather, JDLink, PowerGard, Combine Advisor, Small Tough Grains, Ext Wear Grain Handling, No Platform.



**'19 JD S780..... \$465,000**  
1234sep/hrs, Hyd F/A CM, Adv. PC Chopper, 4600, Premium 3.0, 650/85R38D, VF750/65R26, LED, 28.5' Auger, PowerFold, Leather, JDLink, PowerGard, Combine Advisor, Small Tough Grains, Ext Wear Grain Handling, No Platform.



**'18 JD S780 (2 Available) .....\$ 474,620**  
1066sephrs, Hyd F/A CM, PC Chopper, 4600, 650/85R38D, 750/65R26, LED, 28.5' Auger (26' +Extension) PowerFold, Leather, Combine Advisor, No Platform.



**'17 JD S680 .....\$410,920**  
1039sephrs, Hyd F/A CM, PC Chopper, GS3, 650/85R38D, 750/65R26, LED, 28.5' Auger, Active Terrain, Power Fold, Leather, JD Link, Tough Grains Package, Air Compressors, No Platform.



**'17 JD S680 ..... \$410,920**  
1126sephrs, Hyd F/A CM, PC Chopper, GS3, 650/85R38D, 750/65R26, LED, 28.5' Auger, Active Terrain, Power Fold, Leather, JD Link, Tough Grains Package, Air Compressor, No Platform.



**'17 JD S670..... \$351,930**  
1308sephrs, Hyd F/A CM, PC Chopper, 520/85R42D, 750/65R26, HID, 26' Auger, Manual Fold with Hopper Ext, Variable Stream Rotor, No Platform.



**'17 JD S670 .....\$351,930**  
1340sephrs, Hyd F/A CM, PC Chopper, 520/85R42D, 750/65R26, HID, 26' Auger, Manual Fold with Hopper Ext, Variable Stream Rotor, No Platform.



**'16 JD S680..... \$305,275**  
1709sephrs, Hyd F/A CM, PC Chopper, GS3, 650/85R38D, 750/65R26, LED, 28.5' Auger, Active Terrain, Power Fold, Leather, JD Link, Air Comp, Tough Grains Package, No Platform.



**'15 JD S680..... \$278,275**  
1759sephrs, Hyd F/A CM, PC Chopper, GS3, 2630, 650/85R38D, 750/65R26, Premium Cab, Leather, HID, 28.5' Auger, ProDrive, DensePak, Variable Stream Rotor, PowerFold, No Platform



**'14 JD S690..... \$295,140**  
1406sephrs, CM, PC Chopper, 2630 GS3, 650/85R38D, 750/65R26, LED, 28.5' Auger, PowerFold, Howard Concaves, No Platform.



**'16 JD S690.....\$285,000**  
1587sephrs, Hyd F/A CM, PC Chopper, GS3, 650/85R38D, 750/65R26, LED, 28.5' Auger, PowerFold, Leather, Active Terrain, Tough Grains Package, Air Comp, No Platform.



**'15 JD S690..... \$205,000**  
2301sephrs, Hyd F/A CM, PC Chopper, GS3, 520/85R42D, 750/65R26, LED, 28.5' Auger, PowerFold, Cloth Seat, DensePak, Small Tough Grains Package, Dealer Installed Active Yield, HP Chaffer, No Platform.



**'14 JD S690..... \$230,000**  
1463sephrs, CM, Adv PC Chopper, 7" GS3, Greenstar, ProDrive Trans, 650/85R38D, 750/65R26, HID, 26' Auger + Extender, Variable Stream Rotor, PowerFold, 2630 w/ AT, No Platform



**'13 JD S690.....\$230,000**  
1333sephrs, CM, PC Chopper, 2630 GS3, 650/85R38D, 620/75R26, LED, 28.5' Auger, PowerFold, Howard Concaves, No Platform.



**'17 MF 9565.....\$250,000**  
Est 1400sephrs, 9.8L Engine, Fine Cut Chopper, Standard Adjustable Tailboard, Lateral Tilt FH, 620/70R42D, 750/65R26, PowerFold Hopper, 45' Header Unloading Auger with Turning Spout, Adjustable Pre-Cleaner, Premium Lighting, Comes with Pickup Header.



**'14 JD S680.....\$ 254,000**  
1183sephrs, CM, PC Chopper, GS3, 520/85R42D, 620/70R26, LED, 26' Auger, Manual Hopper, GS3, SF1, No Platform.



**'14 JD S680.....\$ 247,000**  
1334sephrs, CM, PC Chopper, GS3, 520/85R42D, 620/70R26, LED, 26' Auger, Manual Hopper, GS3, SF1, No Platform.



**'14 JD S680.....\$215,000**  
1478sephrs, CM, PC Chopper, 7" GS3 Armrest, 2630, 650/85R38D, 750/65R26, LED, 26' Auger, PowerFold, Howard Concaves, No Platform.



**'14 JD S680.....\$215,000**  
1552sephrs, CM, PC Chopper, 650/85R38D, 750/65R26, HID, 26'Auger, PowerFold, No Platform.



**'14 JD S680.....\$229,000**  
1564sephrs, CM, PC Chopper, GS3, 650/85R38D, 750/65R26, HID, 26' Auger, PowerFold, Leather, No Platform.

## GRAIN CARTS:



**'14 JD S680.....\$210,000**  
1997sephrs, CM, PC Chopper, GS3, 520/85R42D Michelin, VF620/70R26, LED, 26' Auger, Manual Hopper, Leather, No Receiver, No Platform.



**'15 JD S680 (4 Available) .....\$140,000**  
2537sephrs, Hyd F/A CM, ADV PC Chopper, GS3, 2630, 650/85R38D, 750/65R26, Premium Cab, HID, 28.5' Auger, Variable Stream Rotor, ManFold, Michel's Topper, No Receiver, No Platform.



**'17 Brandt 1020XR.....\$65,000**  
1000bu, Green, Standard Axle, 900/60R32, 1 3/4 PTO, Load Cell Kit, Controller Kit, No Joystick, Folding Ladder, 3 Wired Cameras, Aux/Wired Camera, Tarp Kit.



**'17 Brandt 1020XR.....\$65,000**  
1000bu, Green, Standard Axle, 900/60R32, 1 3/4 PTO, Load Cell Kit, Controller Kit, No Joystick, Folding Ladder, Updated Touch Screen Monitor for Cameras, 3 Wired Cameras, Aux/Wired Camera, Tarp Kit.



**'10 J&M 1050.....\$47,500**  
1000bu, 900x32 Tires, Tarp.



**'07 Parker 839.....\$29,000**  
850bu, Red, 17"Auger, Tarp, PTO Drive, 30.5L-32 Singles. New Flighting Last Year.

More Used Equipment Listings at [westernsales.ca/usedequipment](http://westernsales.ca/usedequipment) or call 1-877-676-9600

\*Note: All Used Equipment Listings are subject to change or being sold at the time of print.  
Contact your dealership for details.

# Used Equipment Classifieds7

## Seeding Equipment:

'21/'20	Bourgault	3320/71300	76' QDA, 12"sp, High Float Package, 4.5"V-Packers, 3/4" Knives, All Run Intelligent AG Blockage, MRBIII, MY2020 71300, 1300bu TBH, Saddle Tank, ASC, DS, Dual Fans, Scale, X35, Conveyor, Duals, Approx 24,000 Acres.....	\$755,000
'18	Morris	C2/9800ICT	61' Contour C2, 12"sp, 5.5" Packer, Paired Row, DS, Primary Blockage, 9800ICT, 800bu TBT Cart, DS, Sectional Control, 12" Auger, Single Fan, 850 Duals, X35. Approx 32,000 acres.....	\$419,000
'18	JD	1870/C850	76', 12"sp, DS, 8 Primary, All Run Seed & Fertilizer Blockage, C850 850bu TBH, Tank Scales, IF850/75R42CFO Duals, IF900/75R32CFO Fronts, 5 Meter Rollers, Section Command.....	\$439,500
'18	Morris	C2/9800ICT	61', 12"sp, 4" Paired Row BTT Tips, DS, Primary Agtron Seed/Fert Blockage, 9800 TBT, 800bu, DS, 4 Tank, Sectional Control, 850 Duals, Auger, TopCon X35 Monitor, Approx 40,000 acres.....	\$380,000
'18	Bourgault	3320/6550ST	60', QDA, 10"sp. MRB, 4.5"V-Packers, ¾" Knives, All Run Intelligent Ag Seed/Fert Blockage, 2018 Bourgault 6550ST, 550bu TBH 4 Tank, DS, 591 Monitor, Auger, 900/60R32, Approx 22,000 acres.....	\$370,000
'16	Bourgault	3320/7700	60'XTC, 12"sp, 4.5"V-Packers, ¾" Knives, Primary Seed/Fert Blockage, MRB, 700bu 7700 TBH 4 Tank, Auto Sectional Control, DS, Scale, X30, Conveyor, 710/70R42 Duals, Approx 38000 acres.....	\$360,000
'15	Bourgault	3320/7700	76' QDA, 12"sp, High Float Package, 4.5"V-Packers, 3/4" Knives, Primary Blockage, MRB III, 700 bu TBH, 5 Tank, Saddle Tank, ASC, DS, Dual Fan, Scale, X30, Conveyor, 710/70R42 Duals, Approx 56,000 acres.....	\$360,000
'15	Bourgault	3320/L7800	76' XTC, 10"sp, 4.5" V-Packers, MRB III, Primary Blockage, X30, L7800, 800bu TBT, Scale, 12" Auger, Sectional Control, Approx 50,000 acres .....	\$352,000
'15	Bourgault	3320/L7800	66' XTC, 10"sp, 4.5"V-Packers, MRB III, Primary Blockage, L7800, 800bu TBT, X30, Scale, 1 HS Fan, 1HC Fan, Conveyor, Saddle Tank, Bulk Boom, Sectional Control, Approx 34,000 acres.....	\$385,000
'14	Seed Hawk	8412/800	84', 12"sp, DS, 800SCT Tank, 800bu, TBH, Dual Castors, Cameras, Agtron Blockage, Conveyor, Bag Lift, Approx 45,000 acres.....	\$300,000
'14	Bourgault	3320/7700	68', XTC, 12"sp. 4.5" V-Packers, MRB III, 3/4" Knives, Primary Seed/Fert Blockage, 16.5 Tires, 7700 Tank, 700bu TBH 4 Tank Metering, Saddle Tank, No Section Control, DS, HS/HS Fans, Scale, Brakes, X30, Conveyor, 710/70R42 Duals, Stored Inside, Approx 65,000 acres.....	\$225,000
'18	JD	1910	550bu TBH, DS, 650/85R38 Duals, 12" Conveyor, Var/Rate, Section Control, Power/Cal, No Monitor, AirPower 2 Fans, 3 Meter Rollers, Rear Hitch.....	\$180,000
'14/'15	NH/Bourgault	ST830/L7550	'14 ST830 New Holland (Flexi Coil) Hoe Drill, 62', 12"sp, No Blockage, K-Hart Gang Mounted Packers, 5 Plex, 2015 L7550, 550bu TBT, 5 Tank Meter, Saddle Tank NO ASC, X30 Monitor, 800 65R/32 Duals, 10" Deluxe Auger.....	\$175,000
'13	JD	1895/1910	43', 10"sp, DS, Cast Fert Closing Wheel, 31-13.5x15, All Run Blockage, 430bu TBH, DS, 20.8x42D, Conveyor, Power Calibration, Var/Rate, No Monitor.....	\$180,000
'11	JD	1835/1910	61', 10" sp, DS, 3" Semi Pneumatic, 3/4" Openers, All Run, 430bu TBH, DS, 33-15.5-16.5 Floatation Tires, 10" Auger, Power Calibration, Var/Rate, No Monitor.....	\$ 65,000

## Combines:

'19	JD	S780	(2 Available) 934sephrs, Hyd F/A CM, Adv. PC Chopper, 4600, Premium 3.0, 650/85R38D, 750/65R26, LED, 28.5' Auger, PowerFold, Leather, JDLink, PowerGard, Combine Advisor, Small Tough Grains, Grain Tank Mirror, Extra Cameras, No Platform.....	\$486,000
'18	JD	S780	(5 Available) 755sephrs, Hyd F/A CM, PC Chopper, 4600, 650/85R38D, 750/65R26, LED, 28.5' Auger, PowerFold, Leather, Combine Advisor, PowerGard, No Platform.....	\$506,030
'18	JD	S780	(3 Available) 903sephrs, Hyd F/A CM, Adv. PC Chopper, 4600, 650/85R38D, 750/65R26, LED, 28.5'auger, DensePak, SunnyBrook Concaves, PowerFold, Leather, JDLink, Combine Advisor, Tough Grains Package, Lincoln QuikLube, PowerGard, No Platform.....	\$496,620
'18	JD	S780	1189sephrs, Hyd F/A CM, PC Chopper, 4600, 650/85R38D, 750/65R26, LED, 28.5' Auger (26' +Extension) PowerFold, Leather, Combine Advisor, No Platform.....	\$465,780
'18	JD	S780	1510sephrs, Hyd F/A CM, Adv. PC Chopper, 4600, 650/85R38D, VF750/65R26, LED, 28.5' Auger, PowerFold, Leather, JDLink, PowerGard, Combine Advisor, Small Tough Grains Extended Wear Package, Extended Wear Grain Handling, Small Wire, Grain Tank Mirror, No Platform.....	\$409,620
'18	JD	S780	1697sephrs, Hyd F/A CM, Adv. PC Chopper, 4600, 650/85R38D, VF750/65R26, LED, 28.5' Auger, PowerFold, Leather, JDLink, PowerGard, Combine Advisor, Small Tough Grains Reg. Wear Package, Extended Wear Grain Handling, Small Wire, Grain Tank Mirror, No Platform.....	\$387,880
'17	JD	S680	(2 Available) 1260sephrs, Hyd F/A CM, ADV PC Chopper, GS3, 650/85R38D, 750/65R26, LED, 28.5' Auger, Active Terrain, Power Fold, Leather, JD Link, No Platform.....	\$396,920
'16	JD	S690	1183sephrs, Hyd F/A CM, Adv/PC Chopper, GS3 A/T Complete, 650/85R38D, 750/65R26 Firestone, HID, 26' Folding Auger, Active Terrain, Variable Stream Rotor, Manual Fold, Hopper Extension with Topper, Leather, No Platform.....	\$370,420
'13	JD	S670	(2 Available) 1734sephrs, CM, PC Chopper, 900/60R32, 28L-26, HID, 25.5' Auger, Premium Cab, Power Fold Hopper, Variable Stream Rotor, No Platform.....	\$185,000
'98	CA	2388	Est. 3050sephrs, Internal Chopper, 30.5L-32, 14.9-24, Hopper Topper, Howard Concaves, LED Aftermarket Lighting, No GPS, No Platform.....	\$ 29,000

## Sprayers:

'18	JD	R4045	120ft SS, 1200gal SS, ExactApply, 5 sens BoomTrac, OBA/Level, 2 Sets Tires (IF380/105R50 & LSW800/55R46) Slip Control, Front Fill, LED, Auto Sol'n, Boom Air Purge, AutoTrac, SF1, PowerGard, Radar, AutoLuber, Tridekon Air Lift Dividers, 346hp.....	\$525,860
'18	JD	R4045	120ft SS, 1200gal SS, ExactApply, 5 sens BoomTrac, OBA/Level, 2 Sets Tires (IF380/105R50 & LSW800/55R46) Slip Control, Front Fill, LED, Auto Sol'n, Boom Air Purge, AutoTrac, SF1, PowerGard, Radar, AutoLuber, Tridekon Air Lift Dividers, 346hp.....	\$525,860
'18	JD	R4045	120ft, 1200gal SS, ExactApply, 5 sens BoomTrac, OBA/Level, 2 sets tires (IF380s/IF710s) SlipCntrl, LED, Auto Sol'n, Boom Air Purge, Full AMS AutoTrac, SF3 Ready, Lincoln Quick Lube, PowerGard, 346hp.....	\$415,480
'17	JD	R4045	120ft, 1200gal SS, 20" Spacing, No ExactApply, 2 Sets Tires (IF380/105R50 & 800/55R46 GY ) Auto Solution, Front Fill, Boom Air Purge, HID, Section Control, Auto Boom Level, 346hp.....	\$445,080
'17	JD	R4045	120ft SS, 1200gal SS, Load Command, 135G Direct Injection, SS Eductor, 5 sens BoomTrac, OBA/Level, 2 sets Tires (480s & 710s) Traction Control, LED, Auto Sol'n, Boom Air Purge, AutoLube, 346hp.....	\$333,800

# WE'RE HIRING

SERVICE TECHNICIANS

- Competitive Wages & Year-Round Job Stability
- Tuition Paid to Complete Journeyman Certification
- Annual Boot and Tool Allowance
- Annual Bonus Program
- Attractive Benefits & Pension Package



## western sales



# ANALYZE YOUR HARVEST RESULTS NOW!

Analyze in John Deere Operations Center™ gives you instant harvest results:

- Evaluate yields from different fields
- Compare your field trials
- Measure variety performance
- Build year-end reports to share with partners and clients

See YOUR results in Operations Center

More Used Equipment Listings at [westernsales.ca/usedequipment](https://westernsales.ca/usedequipment) or call 1-877-676-9600

\*Note: All Used Equipment Listings are subject to change or being sold at the time of print.  
Contact your dealership for details.

# Used Equipment Classifieds8

## Tractors:

'21	JD 9470R	645hrs, 18/6 Power Shift, 800/70R38D, 115GPM 5 Hyd, PTO, Prem Act 3.0, Premium CommandView III Cab with ActiveSeat, PowerGard, 470hp.....	\$627,000
'19	Versatile 570	1078hrs,16/4 Power Shift, 800/70R38D, 110GPM 6 Hyd, PTO, Tow Cable, Leather, Weights, John Deere AMS Ready, 570hp.....	\$626,254
'17	JD 9620RX	3202hrs, 18/6 Power Shift, 36"Tracks, Standard Rollers, 115GPM 6 Hyd, PTO, ACS, Pemium Cab, Premium Lighting, Leather, Tow Cable, 620hp.....	\$597,660
'15	Versatile 550DT	1451hrs, 16 Speed Power Shift, 36"Tracks, 110GPM 6 Hyd, PTO, Tow Cable, Leather, Full AMS Ready, 550hp.....	\$570,000
'23	6R 145 MFWD	Approx 120hrs, IVT 50K, LHR, MFWD TLS, Ultimate Cab, Leather Seat, Cab Suspension, Cooling Compartment, Firestone 650/65R38, 540/65R28, 540E/1000/100E PTO, 4 Elect Hyd SCV's, 3PT, 660R MSL FEL, Full Loader Technology Package, Dynamic Weighing, Grapple, 3 Function Joystick, AT Ready 4200 Command Center, 113pto/145enghp.....	\$380,000
'20	JD 6155M MFWD	Approx 1220hrs, AutoQuad PLUS LHR 20/20 40K, MFWD TLS, Tborg 650/65R438, 540/65R28, 540E/1000 PTO, 3 Hyd, Mech Remotes, 3PT, 643R MSL FEL, Grapple, 3 Function Joystick, No Greenstar, 155hp.....	\$238,500
'19	JD 6155M MFWD	1386hrs, AutoQuad PLUS LHR 20/20 40K, MFWD TLS, Tborg 650/65R438, 540/65R28, 540E/1000 PTO, 3 Hyd, Mech Remotes, 3PT, 643R MSL FEL, Grapple, 3 Function Joystick, No Greenstar, 155hp.....	\$238,500
'18	DEUTZ FAHR	630hrs, 50K TTV (CVT) 480/80R46D, 460/85R34, 32 GPM, 4 Hyd, Fenders, 540/1000 PTO, Rear 3 Point 10,000 kg, Front 1000 PTO, Front 3 Point 5480kg, Active Air seat, Air Cab Suspension, RTK Receiver, Topcon Display, 230enghp.....	\$295,500
'17	JD 6195M MFWD	4590hrs, AutoQuad PLUS LHR 20/20 40K, MFWD, Firestone 620/70R42, 600/65R28, Rear Weights, 540/1000E PTO, 3 Hyd, 3PT, 660R MSL FEL, Grapple, 3 Function Joystick, PowerGard, 158pto/195enghp.....	\$223,210
'17	MF 7718 MFWD	Est. 2300hrs, Dyna-6 Transmission, Michelin 650/65R38, 540/65R28, 4Hyd, 3PT, RH Door, Weights, 968 FEL with Suspension, 8' Bucket, Grapple, Full AutoSteer,35pto/165enghp.....	\$195,000

## Flex Drapers:

'21	JD RD40F	40ft Flex Draper, Duraflo Reel, Crop Conveyor Auger, HHS in Rigid, Reel Flip Bundle.....	\$116,900
'20	JD 745FD	<b>(5 Available)</b> 45ft Flex Draper, AWS, Duraflo Reel, DKD, Crop Conveyor Auger, HHS in Rigid, Center Seal Kit.....	\$116,000
'20	JD 745FD	<b>(3 Available)</b> 45ft Flex Draper, DKD, Duraflo Reel, Crop Conveyor Auger, HHS in Rigid, Reel Flip Bundle, Center Seal Kit.....	\$105,000
'19	JD 745FD	<b>(5 Available)</b> 45ft Flex Draper, Duraflo Reel, DKD, Crop Conveyor Auger, HHS in Rigid, Reel Flip Kit, Center Seal Kit.....	\$ 95,000
'18	JD 645FD	45ft, FlexDraper, Duraflo Reel, Crop Conveyor Auger, HHS in Rigid.....	\$ 80,000
'17	JD 645FD	45ft, FlexDraper, Duraflo Reel, Crop Conveyor Auger, HHS in Rigid, Reel Flip Bundle.....	\$ 75,000
'18	JD 640FD	<b>(2 Available)</b> 40ft Flex Draper, Duraflo Reel, Crop Conveyer Auger, HHS in Rigid, Reel Flip Bundle.....	\$ 92,250
'17	JD 640FD	40ft Flex Draper, AWS, Duraflo Reel, Crop Conveyer Auger, HHS in Rigid, Reel Flip Bundle.....	\$ 84,200
'17	JD 640FD	<b>(6 Available)</b> 40ft Flex Draper, AWS, Duraflo Reel, Crop Conveyer Auger, HHS in Rigid.....	\$ 85,000
'17	JD 640FD	40ft Flex Draper, Duraflo Reel, Crop Conveyer Auger, HHS in Rigid, Reel Flip Bundle.....	\$ 72,000
'16	JD 635FD	35ft Flex Draper, AWS, Duraflo Reel, DKD, Crop Conveyor Auger, HHS in Rigid, Transport Not Included.....	\$ 69,000
'15	JD 635FD	35ft Flex Draper, Duraflo Reel, DKD, Crop Conveyor Auger, HHS in Rigid, Reel Flip Bundle.....	\$ 53,000

## Rigid Drapers:

'21	JD	HD50R	50ft, Hinged Draper, AWS, Duraflo Reel, DKD, Crop Conveyor Auger, Grain Saver Belts, Long Guard, Reel Flip Over Kit, X9.....	\$155,000
'21	JD	HD40R	<b>(2 Available)</b> 40ft Hinged Draper, DKD, Gauge Wheels, Grain Saver Belt, Crop Conveyor Auger w/Fingers, Side Knife Ready, BPS, Center Seal Kit, Fine Tooth Long Guard, X9 Mount.....	\$125,000

## MacDon Flex Drapers:

'22	MacDon	FD145	Unused, 45', FlexDraper, PU Reel, DKD, Poly, Cross Auger, Transport, Hyd F/A, In Cab Draper Speed Control, Contour Buddy, JD Adapter.....	\$164,900
'20	MacDon	FD140	40', Flex Draper, PU Reel, DKD, Poly, Cross Auger, Transport, Hyd F/A, JD, Adapter.....	\$112,500
'19	MacDon	FD140	<b>(2 Available)</b> 40', FlexDraper, PU Reel, DKD, Poly, Cross Auger, Transport, Hyd F/A, In Cab Draper Speed Control, Contour Buddy, JD Adapter.....	\$ 95,000
'18	MacDon	FD75	<b>(3 Available)</b> 40', Flex Draper, PU Reel, DKD, Poly, Cross Auger, Transport, Hyd F/A, JD, Adapter.....	\$ 85,000
'17	MacDon	FD75	<b>(2 Available)</b> 40', Flex Draper, PU Reel, DKD, Poly, Cross Auger, Transport, Hyd F/A, JD Adapter.....	\$ 80,000
'18	MacDon	FD75	35', Flex Draper, PU Reel, SKD, Poly, Cross Auger, Transport, Hyd F/A, JD Adapter.....	\$ 85,000
'16	MacDon	FD75	<b>(5 Available)</b> 40', Flex Draper, PU Reel, DKD, Poly, Guage, Cross Auger, Transport, End Finger Kit, Hyd F/A, JD Adapter.....	\$ 70,000
'16	MacDon	FD75	35' FlexDraper, PU Reel, SKD, Poly, Cross Auger, Transport, Hyd F/A, Lodged Crop End Fingers, JD Adapter.....	\$ 70,000
'15	MacDon	FD75	<b>(2 Available)</b> 45', Flex Draper, PU Reel, DKD, Poly, Guage, Cross Auger, Transport, End Finger Kit, Hyd F/A, JD Adapter.....	\$ 65,000
'14	MacDon	FD75	40', Flex Draper, AWS Air Reel, PU Reel, DKD, Poly, Guage, Cross Auger, Transport, Hyd F/A, End Finger Kit, JD Adapter.....	\$ 60,000
'13	MacDon	FD75	40', Flex Draper, PU Reel, DKD, Poly, Guage, Cross Auger, Transport, Hyd F/A, End Finger Kit, JD Adapter.....	\$ 55,000
'12	MacDon	FD70	<b>(2 Available)</b> 40', Flex Draper, PU Reel, DKD, Poly, Guage, Cross Auger, Transport, Hyd F/A, End Finger Kit, JD Adapter.....	\$ 50,000
'15	HB	AF245	45', Ull Pickup Reel, Gauge Wheels, Transport, CNH Adapter.....	\$ 38,000
'09	JD	635F	35', AWS (Combine Mount) Duraflo Reel, Poly, Hyd F/A, S series.....	\$ 15,000
'09	JD	635F	35', Duraflo Reel, Poly, Hyd F/A, HHS in Rigid, S series.....	\$ 18,000

## Grain Carts:

'16	Brandt	1522DXR	1522bu, Scale, 900/60R32 Tires, Steerable Axle, Cameras, Tarp.....	\$140,000
-----	--------	---------	--	-----------



# western sales

# 2023 COMBINE CLINICS

PRESENTATIONS INCLUDE:

- X9 COMBINE & S700 SERIES COMBINE WITH JOHN DEERE REPRESENTATIVES
- NEW HINGED DRAPER SERIES HEADER

OUR WESTERN SALES TEAM WILL HAVE YOU READY TO GO BEFORE THIS HARVEST SEASON!

TO REGISTER: CONTACT YOUR LOCAL AG SOLUTIONS PROFESSIONAL

AUGUST 1ST/23 DAVIDSON  
STARTING AT 9:00 AM

AUGUST 2ND/23 OUTLOOK  
STARTING AT 1:30PM

AUGUST 3RD/23 ROSETOWN  
STARTING AT 9:00AM



# GRAIN BAG SALE



Special Promo  
10% Off

CALL YOUR LOCAL  
WESTERN SALES  
PARTS SPECIALIST

\*SOME RESTRICTIONS APPLY

9

# Harvest More



More bushels. More acres. More savings. All day performance.

Performance Group	Model	X Series Dual Separator	Industry Largest Cleaning Shoe	Harvesting Body	Maximum Engine Power	Grain Tank	Peak Unload Rate
10	X9 1000	45% more threshing area 80% more separating area	36% more cleaning area	23% wider	630 hp 470 kW	420 bu. 14,800 L	4.6 bu/s 160 L/s
11	X9 1100	45% more threshing area 80% more separating area	36% more cleaning area	23% wider	686 hp 512 kW	460 bu. 16,200 L	5.3 bu/s 175 L/s

Compared with John Deere S790 Combine



**western sales**  
1-877-676-9600

Follow us on:



HARVEST TO THE POWER OF X.



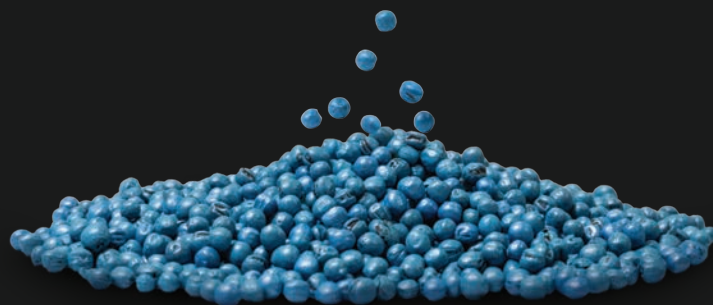
JOHN DEERE

# TAKE CHARGE

OF YOUR SEEDING COST



The **TRIMAX™** significantly reduces seed mortality allowing Producers to confidently lower seeding rates, yet still achieve the same target plant stand!

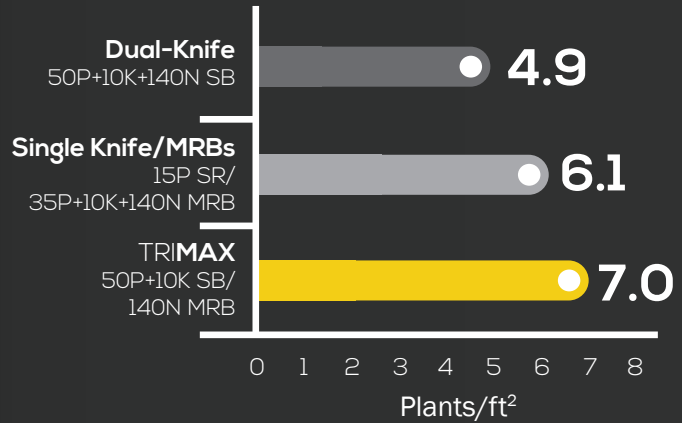




5-YEAR TRIAL AVERAGE

Canola Results Plant Stand: 2016/2017/2019/2020/2021  
Seed Rate: 10 seeds/ft<sup>2</sup>

In a 5-year study conducted by the Bourgault Agronomy Team, one message was very clear; canola mortality is lowest when there is no fertilizer in the seed row.



[www.bourgault.com](http://www.bourgault.com)



# Seed Hawk – Unparalleled accuracy

The heart of the Seed Hawk Air Drill is the individually mounted opener assembly delivers unparalleled accuracy in all soil conditions. The result

## Precision Openers

Seed Hawk's industry-leading opener assemblies operate independently for superior shallow seeding, depth accuracy, and optimal fertilizer placement. The result is quick, uniform germination, even packing, and consistent performance in all soil conditions.

Each opener assembly follows the ground independently by pivoting at the frame, controlled by its own adjustable hydraulic cylinder. A range of seed and fertilizer knives are available to suit every seeding style.

## Big machines that fo

Seed Hawk Air Drills come in 5 or 7-p... them to follow the contours of the land... range of 18" (46 cm), the independent... consistent seed depth regardless of t

## Full control by 10 foot

Crop inputs are a substantial investment... the return on your investment by usi... ing technology to focus the product v... moment.

In the field, the Fenix III meters on the... work seamlessly with the Seed Hawk... of the output on each 10 foot section



Learn how your farmland can reach its full potential at [vaderstad.com/ca-en](http://vaderstad.com/ca-en)

# acy

er assemblies. Each independent dual-knife opener and packer as-  
t is an excellent quality crop with maximum yield potential.

## ollow the contour

lex frame sections, allowing  
nd. With a contour following  
t opener assemblies deliver  
he terrain.

## ot sections

ment on every farm. Maximize  
ng Väderstad's precision farm-  
where it needs at the exact

e Precision Delivery Air Cart  
Air Drill to allow full control  
of the machine.

## Wireless blockage monitoring

Product leaving the manifold bounces off a stainless-steel  
membrane as it enters the seed or fertilizer run, creating a  
small sound wave. If there is any change in the sound wave, if a  
blockage is detected, the wireless blockage system immediate-  
ly delivers quick, accurate notification of the exact location to  
your iCon wireless control system. When a blockage location is  
identified, you can take your tablet out of the tractor cab and



**VÄDERSTAD**

# Precision Delivery Air Carts – Sm

To bring the highest level of technology and precision to your farm, Väderstad has developed the Precision Delivery line of air carts.

With a wide range of innovative features like Acres to Empty, In-field Calibration, and Fit to Field, the iCon Wireless Control system provides you with more detailed real-time information, more automation, more customizable data, and optimized prescription mapping.

## Fill systems

The simple design of the Precision Delivery line allows you to spend less time in the yard and more time in the field. The carts are easy to fill, easy to adjust and easy to clean. The fill systems include conveyors, augers, bag lifts, and more.

## Individual bin load

Stopping to guess how much product is left in the bin is a thing of the past. The modular tank design of the Precision Delivery Air Carts features individual bin load cells. The load cells weigh each bin separately for accurate verification of remaining product. The iCon software uses the innovative Acres to Empty feature to tell you how many acres it will cover. This eliminates guesswork and allows you to pinpoint your product.



360-1000 bu



3-4



12



18-500 cc



Learn how your farmland can reach its full potential at [vaderstad.com/ca-en](http://vaderstad.com/ca-en)

Smart, flexible, efficient

iCon wireless control system

Precision Delivery Air Carts allows you to save more time in the field. Easy to use and easy to maintain. Optional fill systems and fill chutes.

Load cells

At any time you have left in the tank is the design of Precision Delivery Air Cart compartment load cells. They accurately and provide real-time data to the iCon Wireless Control system. The Empty feature to calculate the required fill volume.

The iPad-based iCon wireless control system delivers complete and easy wireless control of your Precision Delivery Air Cart and Seed Hawk Air Drill, even when you are not in the cab.

The iPad-based iCon wireless control system delivers complete and easy wireless control of your Precision Delivery Air Cart and Seed Hawk Air Drill, even when you're not in the cab. The new interface of iCon 3.0 gives a new, modern look as well as brings key commands to the forefront of the application, ensuring easy access for the operator.



LEAD  
THE  
FIELD.



# HARVEST HAULER.

Need to ramp up your productivity? The new Brandt DXT dual-auger grain cart delivers the capacity and speed to meet the demands of your fast-paced harvest season.

### More Efficient

Save time with easier loading and complete tank cleanout, thanks to the low-profile, high-slope tank, and unload speed of 1,000 bushels per minute.

### More Versatile

Customize your grain cart with your choice of 1,150 to 2,500 bushel sizes, right- or left-side unloading, and a variety of undercarriage options.

### More Reliable

Premium components, low maintenance requirements, and our unique robotic welding technology ensure unparalleled quality and maximum uptime.

[brandt.ca](http://brandt.ca)



[westernsales.ca](http://westernsales.ca)

Follow us on:

