

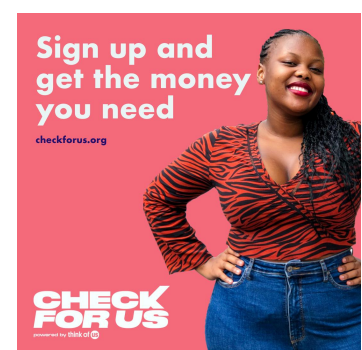
A circular inset image showing a young man with short dark hair, looking upwards and to the right with a thoughtful expression. The image is overlaid with a semi-transparent purple circle.

Over **60% of young people**
need some type of
housing support.

In 2021, following Congress' appropriation of \$400M in emergency funds for current and former foster youth in response to the COVID-19 pandemic, Think of Us implemented Check For Us, a national outreach campaign to find and connect current and former foster youth with their states to apply for funding.

During the course of the campaign, **23,948 young people from all 50 states, Puerto Rico, and the District of Columbia responded to a survey** expressing their urgent need for monetary assistance and detailing what their needs were. Young people were asked to select all options that applied to them.

Data from the Check For Us campaign makes clear that current efforts to prepare youth for transition to adulthood are insufficient to meet the needs of transition-aged youth, leaving them vulnerable to homelessness and housing instability.



Rates of homelessness were extremely high among youth surveyed, particularly for youth who were no longer in foster care.

13%

of all young people surveyed
were currently experiencing
homelessness

9%

of young people in
extended foster care
were experiencing
homelessness

16%

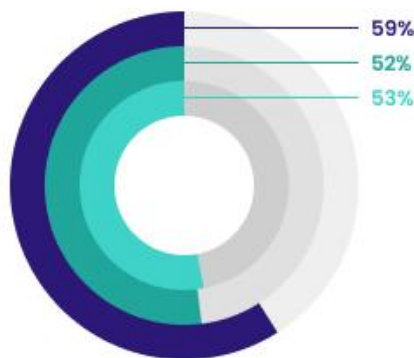
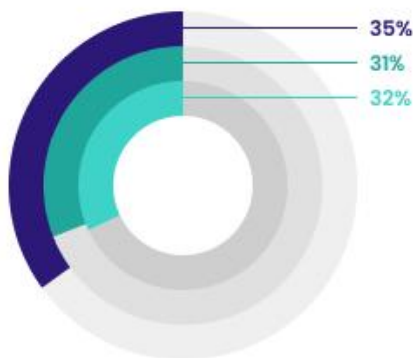
of young people that were
no longer in foster care
were experiencing
homelessness

Nationally, of all youth surveyed, **over 60% of young people requested housing-related assistance.** On average, youth who were **no longer in foster care** were substantially more likely to need housing-related assistance than their peers.

Requested support with
housing vouchers

Requested assistance paying
for rent, utilities, or household
items

Requested help with either
or both forms of housing
assistance



Young people no longer in care
All young people in extended care
All young people surveyed

Safe and stable housing is necessary for young people in and from foster care to be able to thrive in the transition to adulthood, to build supportive relationships, and to take advantage of education and employment opportunities. High rates of homelessness and housing instability, particularly for those who age out of care, can blunt the life trajectory of transition-aged foster youth.

We must fundamentally reimagine the way we prepare foster youth for adulthood.

Percent of foster youth surveyed who expressed that they were experiencing homelessness and/or a need for housing assistance.

State	Experiencing homelessness	Need assistance with a housing voucher	Need assistance with rent, utilities, household items	Any housing related need
Alabama	9.60%	31.20%	52.00%	64.00%
Alaska	15.38%	11.54%	46.15%	46.15%
Arizona	14.62%	30.99%	60.82%	69.59%
Arkansas	16.42%	32.84%	64.18%	68.66%
California	12.24%	32.33%	51.00%	62.33%
Colorado	15.59%	29.66%	58.94%	66.92%
Connecticut	17.14%	39.05%	58.10%	66.67%
Delaware	12.77%	38.30%	61.70%	74.47%
District of Columbia	18.82%	36.47%	47.06%	61.18%
Florida	12.54%	30.06%	58.01%	67.98%
Georgia	12.66%	32.01%	44.91%	58.81%
Hawaii	10.42%	43.75%	60.42%	72.92%
Idaho	8.70%	8.70%	39.13%	43.48%
Illinois	13.50%	35.40%	57.96%	68.58%
Indiana	9.39%	27.62%	60.22%	69.06%
Iowa	10.38%	21.70%	61.32%	66.98%
Kansas	14.29%	25.27%	64.84%	70.33%
Kentucky	13.67%	23.74%	53.24%	63.31%
Louisiana	20.00%	30.71%	52.14%	64.29%
Maine	13.33%	6.67%	40.00%	40.00%
Maryland	13.23%	35.50%	49.19%	62.88%
Massachusetts	8.54%	35.13%	57.59%	67.41%
Michigan	13.20%	26.21%	52.04%	62.08%
Minnesota	14.08%	28.64%	59.71%	69.90%
Mississippi	20.56%	31.78%	51.40%	67.29%
Missouri	16.33%	29.93%	56.46%	67.35%

Percent of foster youth surveyed who expressed that they were experiencing homelessness and/or a need for housing assistance.

Montana	15.56%	42.22%	68.89%	73.33%
Nebraska	6.25%	27.50%	60.42%	68.75%
Nevada	19.23%	33.65%	53.85%	67.31%
New Hampshire	6.67%	13.33%	60.00%	60.00%
New Jersey	11.67%	31.11%	55.28%	66.11%
New Mexico	27.27%	40.91%	59.09%	68.18%
New York	10.13%	30.26%	52.67%	65.64%
North Carolina	12.41%	34.24%	63.03%	72.46%
North Dakota	16.00%	24.00%	44.00%	56.00%
Ohio	15.38%	31.82%	59.79%	68.18%
Oklahoma	11.63%	32.56%	61.24%	67.44%
Oregon	9.96%	29.48%	62.15%	71.31%
Pennsylvania	12.79%	30.81%	50.34%	59.70%
Puerto Rico	28.57%	57.14%	57.14%	85.71%
Rhode Island	17.95%	35.90%	61.54%	66.67%
South Carolina	17.54%	31.58%	51.75%	61.40%
South Dakota	0.00%	7.14%	64.29%	64.29%
Tennessee	15.38%	27.27%	51.75%	60.84%
Texas	12.48%	29.70%	57.19%	66.19%
Utah	11.67%	20.00%	53.33%	58.33%
Vermont	11.11%	11.11%	33.33%	33.33%
Virginia	17.65%	31.37%	50.98%	60.13%
Washington	11.78%	29.07%	58.40%	65.66%
West Virginia	15.00%	10.00%	35.00%	37.50%
Wisconsin	18.75%	33.93%	57.14%	67.86%
Wyoming	16.67%	0.00%	33.33%	33.33%