

# JOHANNES KEPLER UNIVERSITY LINZ



Study in the Heart of Europe.



# ... THE HEART OF EUROPE





# JOHANNES KEPLER



Johannes Kepler  
1571 - 1630

- 1612 – 1625: mathematician in Linz
- 1619: *Harmonices mundi libri V*  
Kepler's third law:  $T^2/a^3 = \text{const.}$
- 1615: *Stereometria Doliorum Vinariorum*  
Keplersche Fassregel – determine the amount of wine in a barrel ...
- ... fundamental and applied sciences  
at the Johannes Kepler university Linz



# A (BRIEF) HISTORY

- July 3, 1964: Inauguration ceremony
- October 1966: Start of academic operations in Social Sciences, Business and Law
- 1969: Start of studies in Engineering & Natural Sciences
- 1975: Faculty of Law
- 2014: Faculty of Medicine
- 2016: 50th anniversary

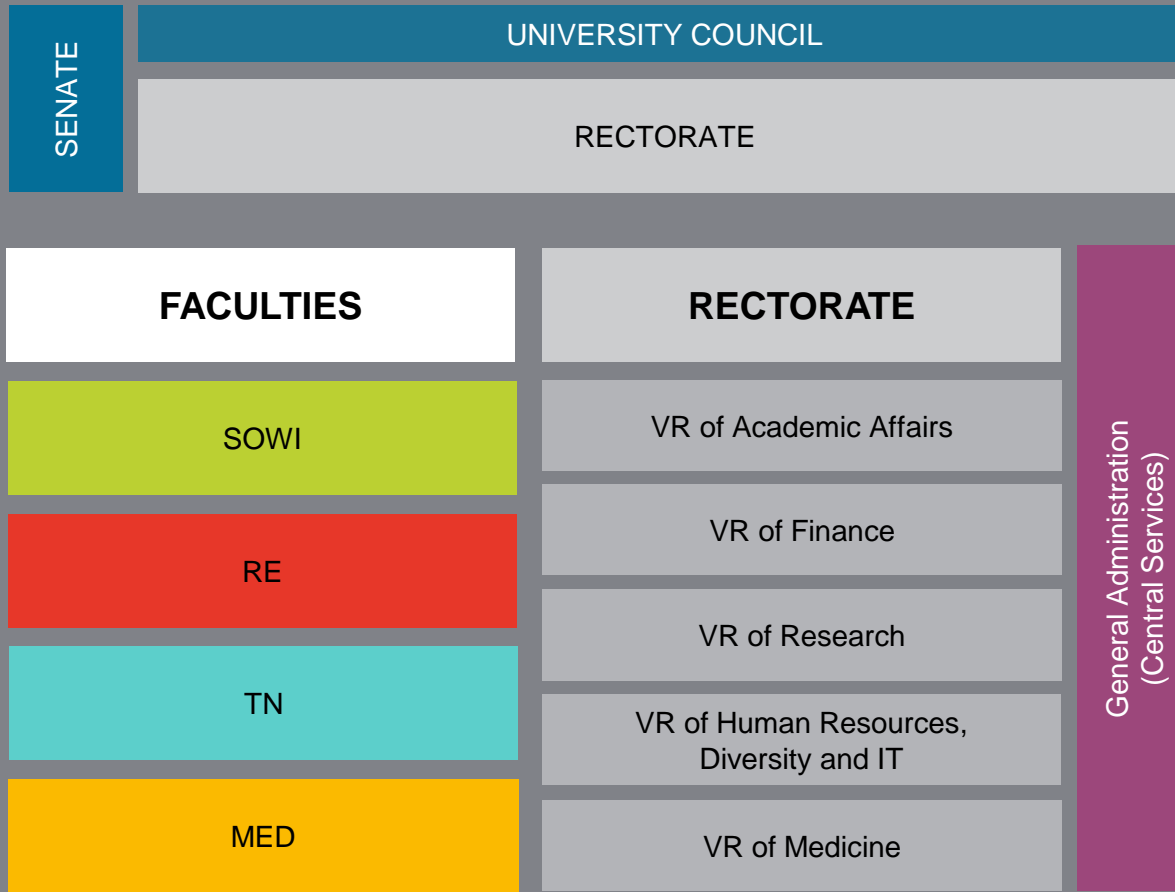


# MODERN CAMPUS





# ORGANIZATIONAL CHART



# RECTORATE





# FACTS & FIGURES

- Faculties
  - Faculty of Social Sciences, Economics & Business (SOWI)
  - Faculty of Law (RE)
  - Faculty of Engineering and Natural Sciences (TNF)
  - Medical Faculty (MED)
- 120 Institutes
- Annual Global Budget: approx. € 100 million
- Annual External Funding: approx. € 35 million
- Approx. 20,000 Students Enrolled in 60 Degree Programs
- 2,700 Employees
- 14 Business Affiliations



## AFFILIATIONS

- Research Institute for Scientific Computing (JKU 80%)
- Software Competence Center Hagenberg (JKU 33%)
- Linz Center of Mechatronics (JKU 25%)
- Multimedia Study Materials (JKU 100%)
- Research Center for Non Destructive Testing (JKU 20%)
- Center for Advanced Bioanalysis (JKU 20%)



**JKU SCIENCE PARK**



# **FACULTY OF SOCIAL SCIENCES, ECONOMICS & BUSINESS**

- 7.800 Enrolled Students approx.
- 1.450 Newly Enrolled Students approx.
- 800 Degrees Awarded Annually approx.
- 25 Degree Programs



# **FACULTY OF SOCIAL SCIENCES, ECONOMICS & BUSINESS**

## **Master's Degree Programs**

- Cultural Studies
- Comparative Social Policy and Welfare
- Digital Business Management
- Finance and Accounting
- Economics
- General Management
- General Management Double Degree ESC Troyes – JKU
- Global Business Canada/Taiwan
- Global Business Russia/Italy
- Management and Applied Economics
- Political Education
- Social Economics
- Sociology
- Statistics
- Web Sciences
- Business Informatics



# FACULTY OF LAW

- 7.300 Enrolled Students
- 1.200 Newly Enrolled Students approx.
- 300 Degrees Awarded Annually approx.
- 5 Degree Programs



# **FACULTY OF LAW**

## **Diploma Degree Programs**

- Law
- Multimedia-Diploma Degree Program in Law  
(unique in Austria)

## **Master's Degree Programs**

- Legal and Business Aspects in Technics
- Taxation



# FACULTY OF ENGINEERING AND NATURAL SCIENCES

- 4.000 Enrolled Students
- 990 Newly Enrolled Students approx.
- 470 Degrees Awarded Annually approx.
- 30 Degree Programs



# **FACULTY OF ENGINEERING AND NATURAL SCIENCES**

## **Master's Degree Programs**

- Bioinformatics
- Biological Chemistry
- Biophysics
- Computer Mathematics
- Computer Science
- Industrial Mathematics
- Information Electronics
- Management in Polymer Technologies
- Mechatronics
- Mathematics for Natural Sciences
- Molecular Biology
- Polymer Chemistry
- Nanoscience and Technology
- Polymer Technologies and Science
- Technical Chemistry
- Technical Physics
- Industrial Engineering – Technical Chemistry



# **FACULTY OF MEDICINE**

- Medical degree program began October 2014 with 60 enrolled students
- The pre-clinical program takes place in cooperation with the Medical University of Graz
- Gradual enrollment of 300 new students annually (2022/2023)
- 1.800 enrolled students by completion in 2028

## **Academic Degree Programs**

- Bachelor's Degree Program in Human Medicine  
(in cooperation with the Medical Univ. of Graz)
- Master's Degree Program in Human Medicine

**RESEARCH**





# RESEARCH FACILITIES

- Christian Doppler Laboratories
  - The JKU currently has 9 CD labs
- 8 Centers of Excellence
- Additional Research Centers
  - Radon Institute for Computational and Applied Mathematics
  - Research Studios Austria – Pervasive Computing
- 2 Wittgenstein Award Recipients
- European Research Council Grants
  - 3 ERC Advanced grants
  - 3 ERC Starting grants



# INTERNATIONAL ACTIVITIES FACTS & FIGURES

- 100 university partnerships in 40 countries
- Cooperation with approx. 200 universities in the framework of EU ERASMUS programs (student and faculty exchange)
- 300 subsidized stays abroad annually by JKU students (outgoing students)
- Scholarships of approx. € 500,000 annually (granted by JKU, EU, regional and national bodies)



# INTERNATIONAL ACTIVITIES FACTS & FIGURES

- 11% of students at the JKU are international students
- 450 incoming international students each academic year
- 750 courses taught in English during the academic year
- 16 foreign language academic degree programs  
(2 Bachelor's degree programs, 14 Master's degree programs)
- 9 joint academic degree programs with universities abroad  
(3 Bachelor's degree programs, 6 Master's degree programs)

# THANK YOU



For more details visit us at [www.jku.at](http://www.jku.at)

**JKU**  
JOHANNES KEPLER  
UNIVERSITY LINZ