

EANCOM - ORDERS

Purchase order message – ver.2018

Release 18.1, Dic 2018



Disclaimer

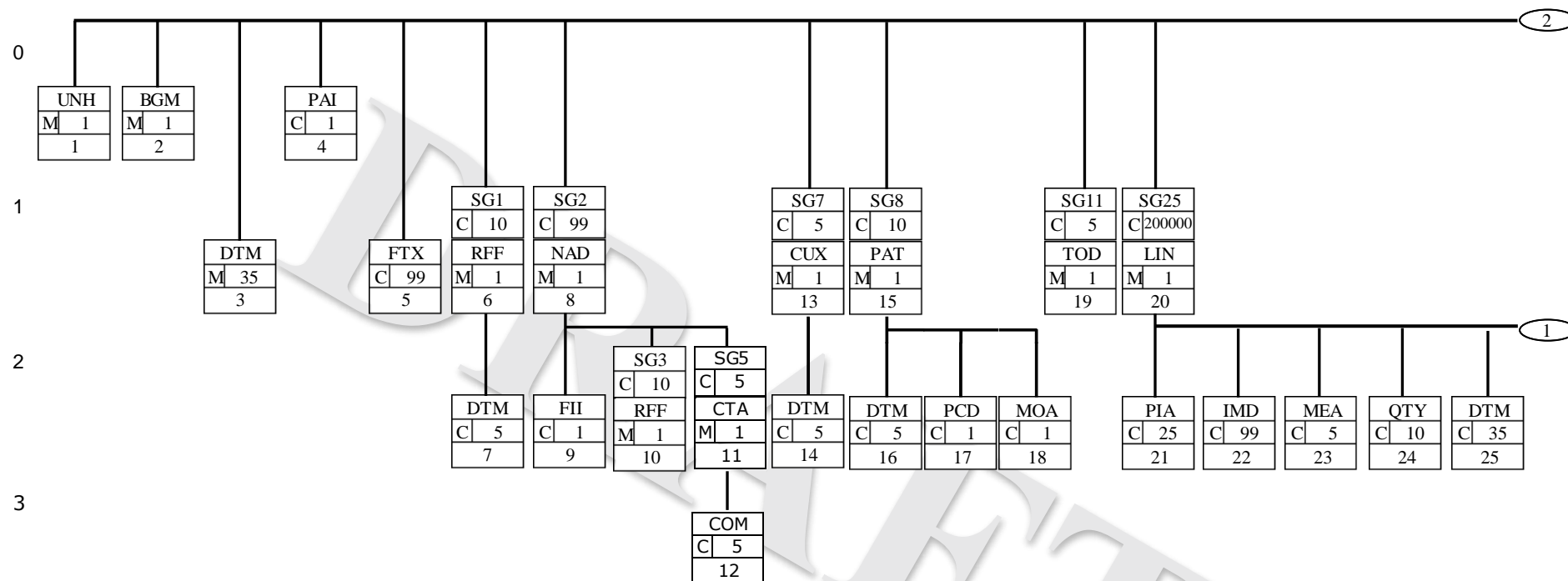
GS1®, under its IP Policy, seeks to avoid uncertainty regarding intellectual property claims by requiring the participants in the Work Group that developed this **GS1 Document Name** **GS1 Document Type** to agree to grant to GS1 members a royalty-free licence or a RAND licence to Necessary Claims, as that term is defined in the GS1 IP Policy. Furthermore, attention is drawn to the possibility that an implementation of one or more features of this Specification may be the subject of a patent or other intellectual property right that does not involve a Necessary Claim. Any such patent or other intellectual property right is not subject to the licencing obligations of GS1. Moreover, the agreement to grant licences provided under the GS1 IP Policy does not include IP rights and any claims of third parties who were not participants in the Work Group.

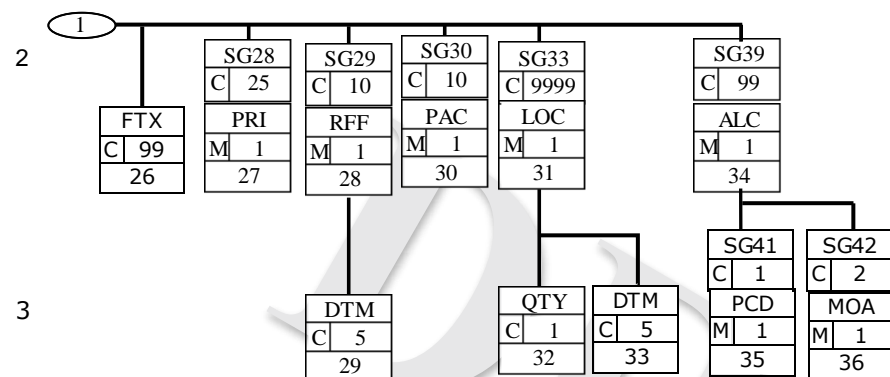
Accordingly, GS1 recommends that any organization developing an implementation designed to be in conformance with this Specification should determine whether there are any patents that may encompass a specific implementation that the organisation is developing in compliance with the Specification and whether a licence under a patent or other intellectual property right is needed. Such a determination of a need for licencing should be made in view of the details of the specific system designed by the organisation in consultation with their own patent counsel.

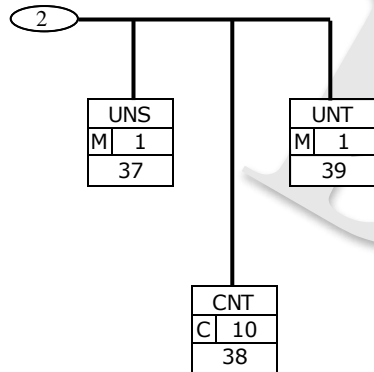
THIS DOCUMENT IS PROVIDED "AS IS" WITH NO WARRANTIES WHATSOEVER, INCLUDING ANY WARRANTY OF MERCHANTABILITY, NONINFRINGEMENT, FITNESS FOR PARTICULAR PURPOSE, OR ANY WARRANTY OTHERWISE ARISING OUT OF THIS SPECIFICATION. GS1 disclaims all liability for any damages arising from use or misuse of this Standard, whether special, indirect, consequential, or compensatory damages, and including liability for infringement of any intellectual property rights, relating to use of information in or reliance upon this document.

GS1 retains the right to make changes to this document at any time, without notice. GS1 makes no warranty for the use of this document and assumes no responsibility for any errors which may appear in the document, nor does it make a commitment to update the information contained herein.

GS1 and the GS1 logo are registered trademarks of GS1 AISBL.







UNH - M 1 - MESSAGE HEADER				
Function : To head, identify and specify a message.				
Segment no. : 1				
	EDIFACT	EAN	IND	Description
0062 Message reference number	M an..14	M		Sender's unique message reference. Sequence number of messages in the interchange. DE 0062 in the UNT will have the same value. The sender generates it.
S009 MESSAGE IDENTIFIER	M	M		
0065 Message type identifier	M an..6	M		ORDERS = Purchase order message
0052 Message type version number	M an..3	M		D = Draft directory
0054 Message type release number	M an..3	M		96A = Version 96A
0051 Controlling agency	M an..2	M		UN = UN/ECE/TRADE/WP.4, United Nations Standard Messages (UNSM)
0057 Association assigned code	C an..6	R		EAN008 = EAN version control number
0068 Common access reference	C an..35	N		
S010 STATUS OF THE TRANSFER	C	N		
0070 Transfer sequence number	M n..2			
0073 First and last transfer	C a1			
Segment Note:				

BGM - M		1 - BEGINNING OF MESSAGE		
Function	:	To indicate the type and function of a message and to transmit the identifying number.		
Segment no.	:	2		
	EDIFACT	EAN	IND	Description
C002 DOCUMENT	C	R		
1001 Document name, coded	C an..3	R		220 = Order 221 = Blanket order 224 = Rush order 226 = Call off order 227 = Consignment order YA9 = Pre allocated cross-docking
1131 Code list qualifier	C an..3	N		
3055 Code list responsible agency, coded	C an..3	D	N	
1000 Document name	C an..35	O	N	
1004 Document number	C an..35	R		
1225 Message function, coded	C an..3	R		9 = Original 16 = Proposal 42 = Confirmation via specific means
4343 Response type, coded	C an..3	D	N	
<u>Segment Note</u>				

DTM - M		35 - DATE/TIME/PERIOD		
Function	:	To specify date, and/or time, or period related to the complete order		
Segment no.	:	3		
	EDIFACT	EAN	IND	Description
C507 DATE/TIME/PERIOD	M	M		
2005 Date/time qualifier	M an..3	M		2 = Delivery date/time, requested 63 = Delivery date/time, latest 64 = Delivery date/time, earliest 69 = Delivery date/time, promised for 137 = Date/time of the document/message
2380 Date/time/period	C an..35	R		
2379 Date/time/period format qualifier.	C an..3	R		102 = CCYYMMDD 203 = CCYYMMDDHHMM
Segment Note:				

PAI- C 1 - PAYMENT INSTRUCTIONS				
Function : To specify the instructions for payment.				
Segment no. : 4				
	EDIFACT	EAN	IND	Description
C534 PAYMENT INSTRUCTION DETAILS	M	M		
4439 Payment conditions, coded	C an..3	O		1 = Direct payment 35 = Documents through banks
4431 Payment guarantee, coded	C an..3	O	N	
4461 Payment means, coded	C an..3	O		10 = Cash 20 = Cheque 23 = Bank cheque 30 = Credit transfer 31 = Debt transfer 42 = Payment to bank account 70 = Bill drawn by the creditor on the debtor 74 = Bill drawn by the creditor on a bank 97 = Clearing between partners 15E = Direct debit
1131 Code list qualifier	C an..3	O	N	
3055 Code list responsible agency, coded	C an..3	O	N	
4435 Payment channel, coded	C an..3	O	N	
<u>Segment Note:</u>				

FTX - C 99 - FREE TEXT				
Function : To provide free form or coded text information				
Segment no. : 5				
	EDIFACT	EAN	IND	Description
4451 Text subject qualifier, coded	M an..3	M		PUR = Purchasing information PRD = Product information DIN = Delivery instructions INV = Invoice instruction ZZZ = Mutually defined
4453 Text function, coded	C an..3	O		1 = Text for subsequent use 3 = Text for immediate use
C107 TEXT REFERENCE	C	D	N	
4441 Free text, coded	M an..3	M		
1131 Code list qualifier, coded	C an..3	O		
3055 Code list responsible agency, coded	C an..3	O		
C108 TEXT LITERAL	C	D	O	
4440 Free text	M an..70	M		Codes related to the item composition in case of textile items.
4440 Free text	C an..70	O		
4440 Free text	C an..70	O		
4440 Free text	C an..70	O		
4440 Free text	C an..70	O		
3453 Language, coded	C an..3	D		Code chart ISO 639
Segment Note:				

Note :

For the EDI considered in the scope of application of the article n° 62 of Legislative Decree 24 January 2012 (converted from the regulation 24 March 2012, n° 27), it is possible to write in the Data Element n° 4440 the wording:

- In Italian language: "Assolve gli obblighi di cui all'articolo 62, comma 1, del decreto legge 24 gennaio 2012, n° 1, convertito, con modificazioni, dalla legge 24 marzo 2012, n° 27."
- In English language: "Discharge the obligations of the article n° 62, subsection 1, of Legislative Decree 24 January 2012, converted with the modifications from the regulation 24 March 2012, n° 27"

SG1 - C		10 - RFF-DTM		
RFF - M		1 - REFERENCE		
Function		: To specify a reference		
Segment no		: 6		
	EDIFACT	EAN	IND	Description
C506 REFERENCE	M	M		AAG = Supplier's order proposal AAN = Buyer's order proposal BO = Blanket order number CT = Contract number ON = Order number (buyer) PD = Promotion deal number VN = Order number (supplier)
1153 Reference qualifier	M an..3	M		
1154 Reference number	C an..35	R		
1156 Line number	C an..6	N		
4000 Reference version number	C an..35	N		
<u>Segment Note:</u> The references given at this point are valid for the whole order unless superseded by references at line level.				

SG1 - C		10 - RFF-DTM		
DTM - C		1 - DATE/TIME/PERIOD		
Function	:	To specify date, and/or time, or period related to the reference specified in the previous RFF segment.		
Segment no	:	7		
	EDIFACT	EAN	IND	Description
C507 DATE/TIME/PERIOD	M	M		
2005 Date/time qualifier	M an..3	M		157 = Validity start date 171= Reference date/time 21E = End validity date
2380 Date/time/period	C an..35	R		
2379 Date/time/period format qualifier	C an..3	R		102 = CCYYMMDD 203 = CCYYMMDDHHMM
<u>Segment Note:</u>				

SG2 - C		99 - NAD-FII-SG3-SG5		
NAD - M		1 - NAME AND ADDRESS		
Function	:	To specify the name/address of the party and their related function.		
Segment no	:	8		
	EDIFACT	EAN	IND	Description
3035 Party qualifier	M an..3	M		BY = Buyer BF = Beneficiary's Bank DL = Factor DP = Delivery party IV = Invoicee LSP = Logistic service provider PW = Despatch party SU = Supplier UC = Ultimate consignee
C082 PARTY IDENTIFICATION DETAILS	C	A	R	
3039 Party id identification	M an..35	M		GLN (EAN location number - format n.13)
1131 Code list qualifier	C an..3	N		
3055 Code list responsible agency, coded	C an..3	R		9 = EAN (International Article Numbering association)
C058 NAME AND ADDRESS	C	N		
3124 Address line	M an..35			
3124 Address line	C an..35			
3124 Address line	C an..35			
3124 Address line	C an..35			
3124 Address line	C an..35			
C080 PARTY NAME	C	D	O	
3036 Party name	M an..35	M		Party name in clear text
3036 Party name	C an..35	O		
3036 Party name	C an..35	O		
3036 Party name	C an..35	O		
3036 Party name	C an..35	O		
3045 Party name format, coded	C an..3	O		
C059 STREET	C	D	O	
3042 Street and number/p.o box	M an..35	M		
3042 Street and number/p.o box	C an..35	O		
3042 Street and number/p.o box	C an..35	O		

3042 Street and number/p.o box	C an..35	O		
3164 City name	C an..35	O		
3229 Country sub-entity identification, coded	C an..9	O	Province	
3251 Postcode identification	C an..9	O		
3207 Country, coded	C an..3	O		
Segment Note:				

DRAFT

SG2 - C		99 - NAD-FII-SG3-SG5		
FII - C		5 - FINANCIAL INSTITUTION INFORMATION		
Function :		To specify the financial institution, its function and identification (ABI/CAB, current account)		
Segment no. :		9		
	EDIFACT	EAN	IND	Description
3035 Party qualifier	M an..3			BF = Beneficiary's bank
C078 ACCOUNT IDENTIFICATION	C			
3194 Account number	C an..35			Code chart ISO 4217 (3 char.)
3192 Account holder name	C an..35			
3192 Account holder name	C an..35			
6345 Monetary unit, coded	C an..3			
C088 FINANCIAL INSTITUTION IDENTIFICATION	C			
3433 Institution name code	C an..11			ABI code
1131 Code list qualifier, coded	C an..3			25 = Bank identification
3055 Code list responsible agency, coded	C an..3			119 = ABI
3434 Address line	C an..17			CAB code
1131 Code list qualifier, coded	C an..3			25 = Bank identification
3055 Code list responsible agency, coded	C an..3			119 = ABI
3207 Country, coded	C an..3			Code chart ISO 3166 (2 char.)
Segment Note:				

SG2 - C		99 - NAD-FII-SG3-SG5		
SG3 - C		10 - RFF		
RFF - M		1 - REFERENCE		
Function :		To specify a reference related to the party specified in the previous NAD segment.		
Segment no : 10				
	EDIFACT	EAN	IND	Description
C506 REFERENCE	M	M		IA = Internal vendor number IT = Internal customer number VA = VAT registration number
1153 Reference qualifier	M an..3	M		
1154 Reference number	C an..35	R		
1156 Line number	C an..6	N		
4000 Reference version number	C an..35	N		
<u>Segment Note:</u>				

SG2 - C 99 - NAD-FII-SG3-SG5				
SG5 - C 5 - CTA-COM				
CTA - M 1 - CONTACT INFORMATION				
Function : To identify a person or a department to whom communication should be directed.				
Segment no: 11				
	EDIFACT	EAN	IND	Description
3139 Contact function, coded	C an..3	R		AP = Accounts payable contact IC = Information contact OC = Order contact
C056 DEPARTMENT OR EMPLOYEE DETAILS	C	O		
3413 Department or employee identification	C an..17	O		
3412 Department or employee	C an..35	O		
Segment Note:				

SG2 - C	99 - NAD-FII-SG3-SG5			
SG5 - C	5 - CTA-COM			
COM - C	5 - COMMUNICATION CONTACT			
Function :	To identify a communication number of a department or a person to whom communication should be directed			
Segment no. :	12			
	EDIFACT	EAN	IND	Description
C076 COMMUNICATION CONTACT	M	M		EM = Electronic mail FX = Fax TE = Telephone TL = Telex XF = X.400
3148 Communication number	M an..512	M		
3155 Communication channel qualifier	M an..3	M		
Segment Note:				

SG7 - C		5 - CUX-DTM		
CUX - M		1 - CURRENCIES		
Function		: To specify currencies used in the transaction and relevant details for the rate of exchange.		
Segment no		: 13		
	EDIFACT	EAN	IND	Description
C504 CURRENCY DETAILS	C	R	M	
6347 Currency details qualifier	M an..3	M		2 = Reference currency
6345 Currency, coded	C an..3	R		ISO 4217 (3 alpha)
6343 Currency qualifier	C an..3	R		9 = Order currency
6348 Currency rate base	C n..4	N		
C504 CURRENCY DETAILS	C	D	O	
6347 Currency details qualifier	M an..3	M		3 = Target currency
6345 Currency, coded	C an..3	R		ISO 4217 (3 alpha)
6343 Currency qualifier	C an..3	R		4 = Invoicing currency 9 = Order currency 11 = Payment currency
6348 Currency rate base	C n..4	O		
5402 Rate of exchange	C n..12	D	O	
6341 Currency market exchange, coded	C an..3	N		
<u>Segment note:</u>				

SG7 - C		5 - CUX-DTM		
DTM - C		5 - DATE/TIME/PERIOD		
Function :		To specify the date/time/period related to the previous segment CUX.		
Segment no. :		14		
		EDIFACT	EAN	IND
		Description		
C507 DATE/TIME/PERIOD		M	M	
2005 Date/time qualifier		M an..3	M	134 = Rate of exchange date/time
2380 Date/time/period		C an..35	R	
2379 Date/time/period format qualifier		C an..3	R	102=CCYYMMDD
Segment Note:				

SG8 - C		10 - PAT-DTM-PCD-MOA		
PAT - M		1 - PAYMENT TERMS BASIS		
Function :		To specify the payment terms/deadline basis		
Segment no : 15				
	EDIFACT	EAN	IND	Description
4279 Payment terms type qualifier	M an..3	M		20 = Penalty terms 21 = Payment by instalment 22 = Discount 10E = Complete payment
C110 PAYMENT TERMS	C	O		
4277 Terms of payment identification	M an..17	M		ZZZ = Mutually defined
1131 Code list qualifier	C an..3	N		
3055 Code list responsible agency, coded	C an..3	O		
4276 Terms of payment	C an..35	O		Payment terms description
4276 Terms of payment	C an..35	O		Payment terms description
C112 TERMS/TIME INFORMATION	C	O		
2475 Payment terms reference, coded	M an..3	M		1 = Date of order 5 = Date of invoice 9 = Date invoice received 21 = Date goods received by buyer 66 = Specified date 70 = Date of issue of transport document(s) 81 = Date of shipment as evidenced by the transport document(s)
2009 Time relation, coded	C an..3	O		1 = Reference date 3 = After reference 6 = End of month containing the reference date 7 = End of the month following the month of reference date 12E = Whichever is first, the 15th or last day of the month following the payment terms period
2151 Type of period, coded	C an..3	O		D = Day M = Month S = Week Y = Year
2152 Number of periods	C n..3	O		
<u>Segment Note:</u>				

SG8 - C 10 - PAT-DTM-PCD-MOA				
DTM - C 5 - DATE/TIME/PERIOD REFERENCE				
Function : To specify date, and/or time, or period related to the payment terms specified in the previous segment PAT				
Segment no : 16				
	EDIFACT	EAN	IND	Description
C507 DATE/TIME/REFERENCE	M	M		
2005 Date/time qualifier	M an..3	M		13 = Terms net due date
2380 Date/time/period	C an..35	R		
2379 Date/time/period format qualifier	C an..3	R		102=CCYYMMDD
<u>Segment Note:</u>				

SG8 - C 10 - PAT-DTM-PCD-MOA				
PCD - C 1 - PERCENTAGE DETAILS				
Function : To specify the discount/penalty/instalment percentage				
Segment no : 17				
	EDIFACT	EAN	IND	Description
C501 PERCENTAGE DETAILS	M	M		
5245 Percentage qualifier	M an..3	M		12 = Discount 15 = Penalty percentage 12E = Percentage of due amount
5482 Percentage	C n..10	R		
5249 Percentage basis, coded	C an..3	O		
1131 Code list qualifier, coded	C an..3	N		
3055 Code list responsible agency, coded	C an..3	N		
<u>Segment Note:</u>				

SG8 - C		10 - PAT-DTM-PCD-MOA		
MOA - C		1 - MONETARY AMOUNT		
Function :		To specify the monetary amount of discount/penalty/instalment		
Segment no. :		18		
	EDIFACT	EAN	IND	Description
C516 MONETARY AMOUNT	M	M		
5025 Monetary amount type qualifier	M an..3	M		52 = Discount amount 201 = Penalty amount 262 = Instalment amount
5004 Monetary amount	C n..18	R		
6345 Currency, coded	C an..3	N		
6343 Currency qualifier, coded	C an..3	N		
4405 Status, coded	C an..3	N		
Segment Note:				

SG11 -C 5- TOD				
TOD - M 1- DELIVERY TERMS				
Function: To specify the terms of delivery				
Segment no :19				
	EDIFACT	EAN	IND	Description
4055 Terms of delivery, coded	C an..3	R		2 = Despatch condition
4215 Transport charges method of payment, coded	C an..3	O		
C100 TERMS OF DELIVERY	C	A	O	<p>CFR = Charges and transportation to the destination</p> <p>CIF = Charges, insurance and transportation to the indicated destination.</p> <p>CIP = Transportation, handling, insurance to the indicated destination.</p> <p>CPT = Delivery and paid handling to the destination</p> <p>DAF = Delivery at frontier - named place</p>
4053 Terms of delivery, coded	C an..3	R		
1131 Code list qualifier	C an..3	D	N	
3055 Code list responsible agency, coded	C an..3	D	N	
4052 Terms of delivery or transport	C an..70	O		
4052 Terms of delivery or transport	C an..70	O		
Segment Note:				

SG25 - C 200000 - LIN-PIA-IMD-MEA-QTY-DTM-FTX-SG28-SG29-SG30-SG33-SG39				
LIN - M 1 - LINE ITEM				
Function: To identify a line item and configuration				
Segment no : 20				
	EDIFACT	EAN	IND	Description
1082 Line item number	C n..6	R		Line number of the order
1229 Action request, coded	C an..3	N		
C212 ITEM IDENTIFICATION	C	D		
7140 Item number	C an..35	R		
7143 Item number type, coded	C an..3	R		
				EN = EAN Code UP = UPC Code
1131 Code list qualifier	C an..3	N		
3055 Code list responsible agency, coded	C an..3	O		
C829 SUB-LINE INFORMATION	C	D		
5495 Sub-line indicator, coded	C an..3	R		1 = Sub-line information
1082 Line item number	C n..6	R		
1222 Configuration level	C n..2	N		
7083 Configuration, coded	C an..3	D	N	
Segment Note:				

SG25 - C 200000 - LIN-PIA-IMD-MEA-QTY-DTM-FTX-SG28-SG29-SG30-SG33-SG39				
PIA - C 25 - ADDITIONAL PRODUCT ID				
Function : To specify additional or substitutional item identification codes				
Segment no. : 21				
	EDIFACT	EAN	IND	Description
4347 Product id. function qualifier	M an..3	M		1 = Additional identification 5 = Product identification
C212 ITEM NUMBER IDENTIFICATION	M	M		
7140 Item number	C an..35	R		
7143 Item number type, coded	C an..3	R		EN = EAN code IN = Buyer's item number UP = UPC code SA = Supplier's article number
1131 Code list qualifier	C an..3	N		
3055 Code list responsible agency, coded	C an..3	O	N	
C212 ITEM NUMBER IDENTIFICATION	C	O		
7140 Item number	C an..35	R		
7143 Item number type, coded	C an..3	R		
1131 Code list qualifier, coded	C an..3	N		
3055 Code list responsible agency, coded	C an..3	O	N	
C212 ITEM NUMBER IDENTIFICATION	C	O		
7140 Item number	C an..35	R		
7143 Item number type, coded	C an..3	R		
1131 Code list qualifier	C an..3	N		
3055 Code list responsible agency, coded	C an..3	O	N	
C212 ITEM NUMBER IDENTIFICATION	C	O		
7140 Item number	C an..35	R		
7143 Item number type, coded	C an..3	R		
1131 Code list qualifier, coded	C an..3	N		
3055 Code list responsible agency, coded	C an..3	O	N	

C212 ITEM NUMBER IDENTIFICATION	C	O		
7140 Item number	C an..35	R		
7143 Item number type, coded	C an..3	R		
1131 Code list qualifier, coded	C an..3	N		
3055 Code list responsible agency, coded	C an..3	O	N	
Segment Note:				

SG25 - C 200000 - LIN-PIA-IMD-MEA-QTY-DTM-FTX-SG28-SG29-SG30-SG33-SG39				
IMD - C 99 - ITEM DESCRIPTION				
Function : To describe the current line item.				
Segment no. : 22				
	EDIFACT	EAN	IND	Description
7077 Item description type, coded	C an..3	R		B = Code and text C = Code F = Free format
7081 Item characteristic, coded	C an..3	O		
C273 ITEM DESCRIPTION	C	A	O	
7009 Item description identification	C an..17	O		CU = Consumer Unit (EAN Code) TU = Trade Unit (Code EAN) VQ = Variable quantity product
1131 Code list qualifier, coded	C an..3	O	N	
3055 Code list responsible agency, coded	C an..3	O	N	
7008 Item description	C an..35	O		
7008 Item description	C an..35	O		Should be inserted the code related to the textile composition of the item.
3453 Language, coded	C an..3	O	N	
7383 Surface/layer indicator, coded	C an..3	N		
Segment Note:				

SG25 - C 200000 - LIN-PIA-IMD-MEA-QTY-DTM-FTX-SG28-SG29-SG30-SG33-SG39				
MEA - C 5 - MEASUREMENTS				
Function :		To specify the actual physical dimensions of the product being ordered.		
Segment no. : 23				
	EDIFACT	EAN	IND	Description
6311 Measurement application qualifier	M an..3	M		PD = Physical dimensions of the ordered product
C502 MEASUREMENT DETAILS	C	A		
6313 Measurement dimension, coded	C an..3	A		AAA = Unit net weight AAB = Unit gross weight DBX = Degree BRIX (EAN Code) DN = Density HT = Height dimension LAY = Number of layers LN = Length dimension UCO = Units per package (EAN code) ULY = Number of units per layer WD = Width dimension
6321 Measurement significance, coded	C an..3	O		3 = Approximately 4 = Equal to
6155 Measurement attribute, coded	C an..3	N		
6154 Measurement attribute	C an..70	N		
C174 VALUE RANGE	C	R		
6411 Measure unit qualifier	M an..3	M		CMT = Centimetre GRM = Gram KGM = Kilogram LTR = Litre MLT = Millilitre MTR = Metre MTK = Square metre PCE = Piece
6314 Measurement value	C n..18	O		
6162 Range minimum	C n..18	O		
6152 Range maximum	C n..18	O		
6432 Significant digits	C n..2	N		
7383 Surface/layer indicator, coded	C an..3	N		
Segment Note:				

SG25 - C 200000 - LIN-PIA-IMD-MEA-QTY-DTM-FTX-SG28-SG29-SG30-SG33-SG39				
QTY - C 10 - QUANTITY				
Function: To specify the quantity of the product				
Segment no.: 24				
	EDIFACT	EAN	IND	Description
C186 QUANTITY DETAILS	M	M		
6063 Quantity qualifier	M an..3	M		21 = Ordered quantity 59 = Number of consumer units in the traded unit
6060 Quantity	M n..15	M		
6411 Measure unit qualifier	C an..3	D		CMT = Centimetre GRM = Gram KGM = Kilogram LTR = Litre MLT = Millilitre MTR = Metre MTK = Square metre PCE = Piece
Segment Note:				

SG25 -C 200000 - LIN-PIA-IMD-MEA-QTY-DTM-FTX-SG28-SG29-SG30-SG33-SG39				
DTM - C 35 - DATE/TIME				
Function: To specify date, and/or time, or period				
Segment no.: 25				
	EDIFACT	EAN	IND	Description
C507 DATE/TIME/PERIOD	M	M		
2005 Date/time/period qualifier	M an..3	M		2 = Delivery date/time, requested 63 = Delivery date/time, latest 64 = Delivery date/time, earliest 69 = Delivery date/time, promised for 137 = Message/document date/time
2380 Date/time/period	C an..35	R		
2379 Date/time/period format qualifier	C an..3	R		102 = CCYYMMDD 203 = CCYYMMDDHHMM
Segment Note:				

SG25 - C 200000 - LIN-PIA-IMD-MEA-QTY-DTM-FTX-SG28-SG29-SG30-SG33-SG39				
FTX- C 99- FREE TEXT				
Function : To provide free form or coded text information				
Segment no : 26				
	EDIFACT	EAN	IND	Description
4451 Text subject qualifier, coded	M an..3	M		PUR = Purchasing information DIN = Delivery instructions INV = Invoice instruction ZZZ = Mutually defined
4453 Text function, coded	C an..3	O		1 = Text for subsequent use 3 = Text for immediate use
C107 TEXT REFERENCE	C	D	N	
4441 Free text, coded	M an..3	M		
1131 Code list qualifier, coded	C an..3	O		
3055 Code list responsible agency, coded	C an..3	O		
C108 TEXT LITERAL	C	D	O	
4440 Free text	M an..70	M		
4440 Free text	C an..70	O		
4440 Free text	C an..70	O		
4440 Free text	C an..70	O		
4440 Free text	C an..70	O		
3453 Language, coded	C an..3	D		Code chart ISO 639
<u>Segment Note:</u>				

SG25 - C 200000 - LIN-PIA-IMD-MEA-QTY-DTM-FTX-SG28-SG29-SG30-SG33-SG39				
SG28 - C 25 - PRI				
PRI - M 1 - PRICE DETAILS				
Function: To specify price information				
Segment no. : 27				
	EDIFACT	EAN	IND	Description
C509 PRICE INFORMATION	C	R		
5125 Price qualifier	M an..3	M		AAA = Calculation net AAB = Calculation gross
5118 Price amount	C n..15	R		
5375 Price type, coded	C an..3	O		AE = Range dependent price CA = Catalogue CT = Contract
5387 Price type qualifier	C an..3	O		PRP = Promotional price
5284 Unit price basis	C n..9	D	N	
6411 Measure unit qualifier	C an..3	D	O	CMT = Centimetre GRM = Gram KGM = Kilogram LTR = Litre MLT = Millilitre MTR = Metre MTK = Square metre P1 = Percent PCE = Piece
5213 Sub-line price change, coded	C an..3	N		
Segment Note:				

SG25 - C 200000 - LIN-PIA-IMD-MEA-QTY-DTM-FTX-SG28-SG29-SG30-SG33-SG39				
SG29 - C 10 - RFF-DTM				
RFF - M 1 - REFERENCE				
Function : To specify a reference				
Segment no : 28				
	EDIFACT	EAN	IND	Description
C506 REFERENCE	M	M		PD = Promotional deal number
1153 Reference qualifier	M an..3	M		
1154 Reference number	C an..35	R		
1156 Line number	C an..6	O		
4000 Reference version number	C an..35	N		
Segment Note:				

SG25 - C 200000 - LIN-PIA-IMD-MEA-QTY-DTM-FTX-SG28-SG29-SG30-SG33-SG39				
SG29 - C 10 - RFF-DTM				
DTM - C 5 - DATE/TIME/PERIOD				
Function : To specify date/time/period related to the reference specified in the segment RFF.				
Segment no : 29				
	EDIFACT	EAN	IND	Description
C507 DATE/TIME/PERIOD	M	M		
2005 Date/time/period qualifier	M an..3	M		171 = Reference date/time
2380 Date/time/period	C an..35	R		
2379 Date/time/period format qualifier	C an..3	R		102=CCYYMMDD 203=CCYYMMDDHHMM
Segment Note:				

SG25 - C 200000 - LIN-PIA-IMD-MEA-QTY-DTM-FTX-SG28-SG29-SG30-SG33-SG39				
SG30 - C 10 - PAC				
PAC - M 1 - PACKAGE				
Function : To describe the number and type of packages/physical units.				
Segment no. : 30				
	EDIFACT	EAN	IND	Description
7224 Number of packages	C n..8	O		
C531 PACKAGE DETAILS	C	O	A	
7075 Packaging level, coded	C an..3	O	N	
7233 Packaging related information, coded	C an..3	O		50 = Package barcoded EAN/UCC-13 or EAN/UCC-8 51 = Package barcoded ITF-14 or ITF-6 52 = Package barcoded UCC/EAN-128
7073 Packaging terms and conditions, coded	C an..3	O		1 = Packaging cost payed by supplier 2 = Packaging cost payed by recipient 3 = Packaging cost not charged (returnable) 4E = Rented (EAN code) 5E = Exchangeable (EAN coded) 6E = Deposit (EAN code) 7E = Not reusable (EAN code)
C202 PACKAGE TYPE	C	O		
7065 Type of packages identification	C an..17	A		08 = Oneway pallet 09 = Returnable pallet 200 = Pallet ISO 0 - 1/2 EURO Pallet (EAN code) 201 = Pallet ISO 1 - 1/1 EURO Pallet (EAN code) 203 = 1/4 EURO pallet (EAN code) DPE = Display package (EAN code) PA = packet (e.g. packet of cigarette) PK = Package
1131 Code list qualifier	C an..3	O		
3055 Code list responsible agency, coded	C an..3	O		9 = EAN (International Article Numbering association)
7064 Type of packages	C an..35	O		

C402 PACKAGE TYPE IDENTIFICATION	C	N	
7077 Item description type, coded	M an..3		
7064 Type of packages	M an..35		
7143 Item number type, coded	C an..3		
7064 Type of packages	C an..35		
7143 Item number type, coded	C an..3		
C532 RETURNABLE PACKAGE DETAILS	C	D	
8395 Returnable package freight payment responsibility, coded	C an..3	O	1 = Paid by customer 2 = Free 3 = Paid by supplier
8393 Returnable package load contents, coded	C an..3	N	
Segment Note:			

SG25 - C 200000 - LIN-PIA-IMD-MEA-QTY-DTM-FTX-SG28-SG29-SG30-SG33-SG39				
SG33 - C 9999 - LOC-QTY-DTM				
LOC - M 1 - PLACE/LOCATION IDENTIFICATION				
Function : To identify a country/place/location/related location one/related location two				
Segment no.: 31				
	EDIFACT	EAN	IND	Description
3227 Location qualifier	M an..3	M		7 = Place of delivery
C517 LOCATION IDENTIFICATION	C	A		
3225 Location identification	C an..25	A		GLN (EAN Location Number)
1131 Code list qualifier	C an..3	O		
3055 Code list responsible agency, coded	C an..3	O		9 = EAN (International Article Numbering association) 89 = Assigned by distributor 90 = Assigned by supplier
3224 Place/location	C an..70	O		
C519 RELATED LOCATION ONE IDENTIFICATION	C	O	N	
3223 Related location one identification	C an..25	R		
1131 Code list qualifier	C an..3	O		
3055 Code list responsible agency, coded	C an..3	O		
3222 Related location one	C an..70	O		
C553 RELATED LOCATION TWO IDENTIFICATION	C	O	N	
3233 Related location two identification	C an..25	R		
1131 Code list qualifier	C an..3	O		
3055 Code list responsible agency, coded	C an..3	O		
3232 Related location two	C an..70	O		
5479 Relation, coded	C an..3	N		
Segment Note:				

SG25 - C 200000 - LIN-PIA-IMD-MEA-QTY-DTM-FTX-SG28-SG29-SG30-SG33-SG39				
SG33 - C 9999 - LOC-QTY-DTM				
QTY - C 1 - QUANTITY				
Function: To specify the quantity				
Segment no.: 32				
	EDIFACT	EAN	IND	Description
C186 QUANTITY DETAILS	M	M		
6063 Quantity qualifier	M an..3	M		11 = Split quantity
6060 Quantity	M n..15	M		
6411 Measure unit qualifier	C an..3	D		CMT =Centimetre GRM =Gram KGM =Kilogram LTR = Litre MLT = Millilitre MTR = Metre MTK = Square metre PCE = Piece
<u>Segment Note:</u>				

SG25 - C 200000 - LIN-PIA-IMD-MEA-QTY-DTM-FTX-SG28-SG29-SG30-SG33-SG39				
SG33 - C 9999 - LOC-QTY-DTM				
DTM - C 5 - DATE/TIME/PERIOD				
Function: To specify date/time/period				
Segment no : 33				
	EDIFACT	EAN	IND	Description
C507 DATE/TIME/PERIOD	M	M		
2005 Date/time/period qualifier	M an..3	M		2 = Delivery date/time, requested 63 = Delivery date/time, latest 64 = Delivery date/time, earliest 69 = Delivery date/time, promised for
2380 Date/time/period	C an..35	R		
2379 Date/time/period format qualifier	C an..3	R		102=CCYYMMDD 203=CCYYMMDDHHMM
Segment Note:				

SG25 - C 200000 - LIN-PIA-IMD-MEA-QTY-DTM-FTX-SG28-SG29-SG30-SG33-SG39				
SG39 - C 99 - ALC-SG41-SG42				
ALC - M 1 - ALLOWANCE OR CHARGE				
Function: To identify allowance or charge details				
Segment no.: 34				
	EDIFACT	EAN	IND	Description
5463 Allowance or charge qualifier	M an..3	M		A = Allowance C = Charge N = No allowance/charge (special conditions)
C552 ALLOWANCE/CHARGE INFORMATION	C	O		
1230 Allowance or charge number	C an..35	O		
5189 Allowance/charge description, coded	C an..3	O		64E = Yearly turnover allowance/charge
4471 Settlement, coded	C an..3	O		
1227 Calculation sequence indicator	C an..3	D		1 = First step of calculation 2 = Second step of calculation 3 = Third step of calculation Etc, etc, etc....
C214 SPECIAL SERVICES IDENTIFICATION	C	D		
7161 Special services, coded	C an..3	R		AEO = Eco contribution RAEE (WEEE) DI = Discount EAB = Early payment allowance FC = Freight charge FI = Finance charge IS = Invoice services PAD = Promotional allowance PC = Packing RAA = Rebate RAD = Returnable container SER = Service charge TD = Trade discount VAB = Volume discount VEJ = Environmental protection or clean-up service X14 = Preferential merchandising location service
1131 Code list qualifier	C an..3	O		

3055 Code list responsible agency, coded	C an..3	D	Insert the code“9 = EAN” only when in the segment DE 7161 one of the following codes is used: SER, VEJ, X14
7160 Special service	C an..35	O	
7160 Special service	C an..35	O	
Segment Note:			

DRAFT

SG25 - C 200000 - LIN-PIA-IMD-MEA-QTY-DTM-FTX-SG28-SG29-SG30-SG33-SG39				
SG39 - C 99 - ALC-SG41-SG42				
SG41 - C 1 - PCD				
PCD - M 1 - PERCENTAGE DETAILS				
Function : To specify percentage information to calculate the discount or charge amount				
Segment no. : 35				
	EDIFACT	EAN	IND	Description
C501 PERCENTAGE DETAILS	M	M		3 = Allowance or charge
5245 Percentage qualifier	M an..3	M		
5482 Percentage	C n..10	R		
5249 Percentage basis, coded	C an..3	O	N	
1131 Code list qualifier	C an..3	N		
3055 Code list responsible agency, coded	C an..3	N		
<u>Segment Note:</u>				

SG25 - C 200000 - LIN-PIA-IMD-MEA-QTY-DTM-FTX-SG28-SG29-SG30-SG33-SG39				
SG39 - C 99 - ALC-SG41-SG42				
SG42 - C 2 - MOA				
MOA - M 1 - MONETARY AMOUNT				
Function : To specify a monetary amount				
Segment no : 36				
	EDIFACT	EAN	IND	Description
C516 MONETARY AMOUNT	M	M		
5025 Monetary amount type qualifier	M an..3	M		8 = Allowance or charge amount 13 = Amount subject to total monetary discount (to use with the "N" value in the DE 5463 of the previous ALC segment) X31 = Unit allowance amount
5004 Monetary amount	C n..18	R		
6345 Currency, coded	C an..3	O		ISO 4217. This DE is used only for valued lines
6343 Currency qualifier	C an..3	O	N	
4405 Status, coded	C an..3	O	N	
Segment Note:				

UNS - M 1 - SECTION CONTROL				
Function : To separate header, detail, and summary sections of a message.				
Segmentno. : 37				
	EDIFACT	EAN	IND	Description
0081 Section identification	M a1	M		S = Detail/summary section separator
<u>Segment Note:</u>				

DRAFT

CNT - C 10 - CONTROL TOTAL				
Function : To provide the control total				
Segment no: 38				
	EDIFACT	EAN	IND	Description
C270 CONTROL	M	M		
6069 Control qualifier	M an..3	M		1 = Total value of the quantity segments at line level in a message 2 = Number of LIN segments in the message (including sub-lines LIN) 11 = Total number of packages (TU)
6066 Control value	M n..18	M		
6411 Measure unit qualifier	C an..3	O		
Segment Note:				

UNT - M 1 - MESSAGE TRAILER				
Function : To end and check the completeness of a message.				
Segment no. : 39				
	EDIFACT	EAN	IND	Description
0074 Number of segments in the message	M n..6	M		The total number of segments in the message.
0062 Message reference number	M an..14	M		The message reference number detailed here should be equal to the one specified in the UNH segment
<u>Segment Note:</u>				