



The Global Language of Business

EANCOM - INVOIC

Invoice message – ver.2020

Release 20.4, Dic 2020



Disclaimer

GS1®, under its IP Policy, seeks to avoid uncertainty regarding intellectual property claims by requiring the participants in the Work Group that developed this **GS1 Document Name** **GS1 Document Type** to agree to grant to GS1 members a royalty-free licence or a RAND licence to Necessary Claims, as that term is defined in the GS1 IP Policy. Furthermore, attention is drawn to the possibility that an implementation of one or more features of this Specification may be the subject of a patent or other intellectual property right that does not involve a Necessary Claim. Any such patent or other intellectual property right is not subject to the licencing obligations of GS1. Moreover, the agreement to grant licences provided under the GS1 IP Policy does not include IP rights and any claims of third parties who were not participants in the Work Group.

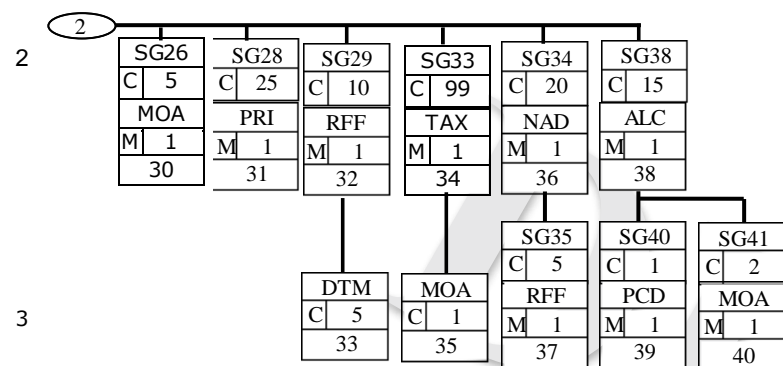
Accordingly, GS1 recommends that any organization developing an implementation designed to be in conformance with this Specification should determine whether there are any patents that may encompass a specific implementation that the organisation is developing in compliance with the Specification and whether a licence under a patent or other intellectual property right is needed. Such a determination of a need for licencing should be made in view of the details of the specific system designed by the organisation in consultation with their own patent counsel.

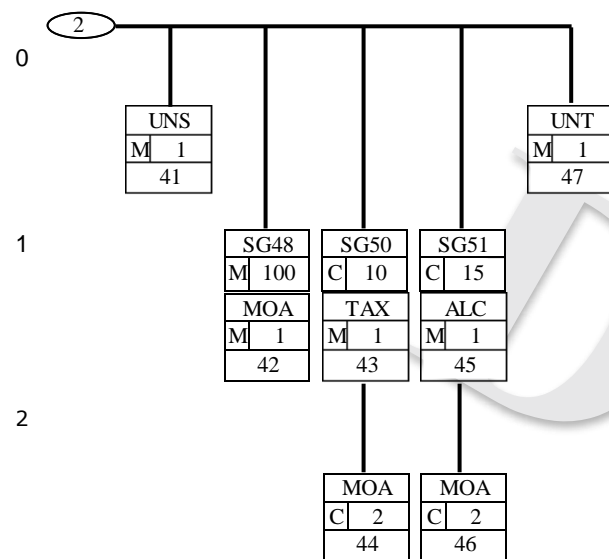
THIS DOCUMENT IS PROVIDED "AS IS" WITH NO WARRANTIES WHATSOEVER, INCLUDING ANY WARRANTY OF MERCHANTABILITY, NONINFRINGEMENT, FITNESS FOR PARTICULAR PURPOSE, OR ANY WARRANTY OTHERWISE ARISING OUT OF THIS SPECIFICATION. GS1 disclaims all liability for any damages arising from use or misuse of this Standard, whether special, indirect, consequential, or compensatory damages, and including liability for infringement of any intellectual property rights, relating to use of information in or reliance upon this document.

GS1 retains the right to make changes to this document at any time, without notice. GS1 makes no warranty for the use of this document and assumes no responsibility for any errors which may appear in the document, nor does it make a commitment to update the information contained herein.

GS1 and the GS1 logo are registered trademarks of GS1 AISBL.







UNH - M		1 - MESSAGE HEADER		
Function :		To head, identify and specify a message.		
Segment no. : 1				
	EDIFACT	EAN	IND	Description
0062 Message Reference Number	M an..14	M		Sender's unique message reference. Sequence number of messages in the interchange. DE 0062 in the UNT will have the same value. The sender generates it.
S009 MESSAGE IDENTIFIER	M	M		
0065 Message type identifier	M an..6	M		INVOIC = Invoice message
0052 Message type version number	M an..3	M		D = Draft directory
0054 Message type release number	M an..3	M		96A = Version 96A
0051 Controlling agency	M an..2	M		UN = UN/ECE/TRADE/WP.4, United Nations Standard Messages (UNSM)
0057 Association assigned code	C an..6	R		EAN008 = EAN version control number
0068 Common access reference	C an..35	N		
S010 STATUS OF THE TRANSFER	C	N		
0070 Sequence message transfer number	M n..2			
0073 First/last sequence message transfer indication	C a1			
Segment Note:				

BGM - M		1 - BEGINNING OF MESSAGE		
Function :		To indicate the type and function of a message and to transmit the identifying number.		
Segment no. : 2				
	EDIFACT	EAN	IND	Description
C002 DOCUMENT NAME	C	R		
1001 Document/message name, coded	C an..3	R		380 = Commercial invoice 381 = Credit Note 383 = Debit Note 386 = Prepayment invoice 389 = Self-billed invoice FSE = Invoice for services NCS = Credit note for services NDS = Debit note for services
1131 Code list qualifier, coded	C an..3	N		
3055 Code list responsible agency, coded	C an..3	N		
1000 Document/message name	C an..35	O		
1004 Document/message number	C an..35	R		Invoice Number assigned by document sender.
1225 Message function, coded	C an..3	R		5 = Replace 7 = Duplicate 9 = Original 31 = Copy 43 = Additional transmission
4343 Response type, coded	C an..3	N		
<u>Segment Note</u>				

DTM - M 35 - DATE/TIME/PERIOD				
Function : To specify date, and/or time, or period related to the invoice message.				
Segment no. : 3				
	EDIFACT	EAN	IND	Description
C507 DATE/TIME/PERIOD	M	M		
2005 Date/time/period qualifier	M an..3	M		131 = Tax point date 137 = Document/message date/time
2380 Date/time/period	C an..35	R		
2379 Date/time/period format qualifier	C an..3	R		102 = CCYYMMDD 203 = CCYYMMDDHHMM
<u>Segment Note:</u>				

PAI - C 1 - PAYMENT INSTRUCTIONS				
Function : To specify the instructions for payment.				
Segment no. : 4				
	EDIFACT	EAN	IND	Description
C534 PAYMENT INSTRUCTION DETAILS	M	M		
4439 Payment conditions, coded	C an..3	O		1 = Direct payment 35 = Documents through banks
4431 Payment guarantee, coded	C an..3	O	N	
4461 Payment means, coded	C an..3	O		10 = Cash 20 = Cheque 23 = Bank cheque 30 = Credit transfer 31 = Debit transfer 42 = Payment to bank account 70 = Bill drawn by the creditor on the debtor 74 = Bill drawn by the creditor on a bank 97 = Clearing between partners 15E = Direct debit
1131 Code list qualifier	C an..3	O	N	
3055 Code list responsible agency, coded	C an..3	O	N	
4435 Payment channel, coded	C an..3	O	N	
Segment Note:				

FTX - C		10 - FREE TEXT			
Function :		To provide free form or coded text information			
Segment no. :		5			
	EDIFACT	EAN	IND	Description	
4451 Text subject qualifier coded	M an..3	M		AAI = General information ACD = Reason ACF = Additional attribute information PRD = Product information REG = Regulatory information SIN = Special instructions TXD = Tax declaration ZZZ = Mutually defined	
	C an..3	O			
4453 Text function, coded					1 = Text for subsequent use: it does not establish an intervention request
C107 TEXT REFERENCE	C	D	N		
4441 Free text, coded	M an..3	M		Codes related to the item composition in case of textile items. For the code values, see the references in the guideline.	
1131 Code list qualifier	C an..3	O			
3055 Code list responsible agency, coded	C an..3	O			
C108 TEXT LITERAL	C	D	R		
4440 Free text	M an..70	M		IT = Italian (ISO 639)	
4440 Free text	C an..70	O			
4440 Free text	C an..70	O			
4440 Free text	C an..70	O			
4440 Free text	C an..70	O			
3453 Language, coded	C an..3	D			
Segment Note:					

Note:

For the EDI transactions considered in the scope of application of the article n° 62 of Legislative Decree 24 January 2012 (converted from the regulation 24 March 2012, n° 27), it is possible to write in the DE 4440 the wording:

- In Italian language: "Assolve gli obblighi di cui all'articolo 62, comma 1, del decreto legge 24 gennaio 2012, n° 1, convertito, con modificazioni, dalla legge 24 marzo 2012, n° 27."
- In English language: "Discharge the obligations of the article n° 62, subsection 1, of Legislative Decree 24 January 2012, converted with the modifications form the regulation 24 March 2012, n° 27"

SG1 - C 99 - RFF-DTM				
RFF - M 1 - REFERENCE				
Function : To specify a reference				
Segment no. : 6				
	EDIFACT	EAN	IND	Description
C506 REFERENCE	M	M		CT = Contract number
1153 Reference qualifier	M an..3	M		
1154 Reference number	C an..35	R		
1156 Line number	C an..6	N		
4000 Reference version number	C an..35	N		
<u>Segment Note:</u> The references given at this point are valid for the whole invoice unless superseded by references at line level.				

SG1 - C	99 - RFF-DTM			
DTM - C	5- DATE/TIME/PERIOD			
Function :	To specify date, and/or time, or period related to the reference specified in the previous RFF segment.			
Segment no :	7			
	EDIFACT	EAN	IND	Description
C507 DATE/TIME/PERIOD	M	M		
2005 Date/time/period qualifier	M an..3	M		157 = Validity start date 171 = Reference date/time 21E = End validity date
2380 Date/time/period	C an..35	R		
2379 Date/time format qualifier	C an..3	R		102 = CCYYMMDD 203 = CCYYMMDDHHMM
<u>Segment Note:</u>				

SG2 - C		99 - NAD-FII-SG3-SG5		
NAD - M		1 - NAME AND ADDRESS		
Function :		To specify the name/address and their related function, either by CO82 only and/or structured by CO80 thru 3207.		
Segment no : 8				
	EDIFACT	EAN	IND	Description
3035 Party qualifier	M an..3	M		BF = Beneficiary's Bank BY = Buyer DL = Factor FD = Buyer's parent company II = Issuer of invoice ITO = Invoice recipient party IV = Invoicee PR = Payer SU = Supplier
C082 PARTY IDENTIFICATION DETAILS	C	A	R	
3039 Party id identification, coded	M an..35	M		For the identification of the party, it is recommended to use GS1 GLN (format n.13)
1131 Code list qualifier, coded	C an..3	N		
3055 Code list responsible agency, coded	C an..3	R		9 = EAN (International Article Numbering Association)
C058 NAME AND ADDRESS	C	N		
3124 Name and address line	M an..35			
3124 Name and address line	C an..35			
3124 Name and address line	C an..35			
3124 Name and address line	C an..35			
3124 Name and address line	C an..35			
C080 PARTY NAME	C	D	O	
3036 Party name	M an..35	M		Party name in clear text
3036 Party name	C an..35	O		
3036 Party name	C an..35	O		
3036 Party name	C an..35	O		
3036 Party name	C an..35	O		
3045 Party name format, coded	C an..3	O		
C059 STREET	C	D	O	
3042 Street and number/p.o box	M an..35	M		
3042 Street and number/p.o box	C an..35	O		

3042 Street and number/p.o box	C an..35	O		
3042 Street and number/p.o box	C an..35	O		
3164 City name	C an..35	O		
3229 Country sub-entity identification, coded	C an..9	O		
3251 Postal code identification	C an..9	O		
3207 Country, coded	C an..3	O		
Segment Note:				

SG2 - C		99 - NAD-FII-SG3-SG5		
FII - C		5 - FINANCIAL INSTITUTION INFORMATION		
Function :		To identify an account and a related financial institution.		
Segment no. :		9		
	EDIFACT	EAN	IND	Description
3035 Party qualifier	M an..3	M		BF = Beneficiary's bank
C078 ACCOUNT IDENTIFICATION	C	R		
3194 Account holder number	C an..35	R		
3192 Account holder name	C an..35	O		
3192 Account holder name	C an..35	O		
6345 Currency, coded	C an..3	O		ISO 4217 (3 alpha code)
C088 INSTITUTION IDENTIFICATION	C	O		
3433 Institution name identification	C an..11	A		ABI code
1131 Code list qualifier, coded	C an..3	O		25 = Bank identification
3055 Code list responsible agency, coded	C an..3	O		119 = ABI
3434 Institution branch number	C an..17	O		CAB code
1131 Code list qualifier, coded	C an..3	O		25 = Bank identification
3055 Code list responsible agency, coded	C an..3	O		119 = ABI
3432 Institution name	C an..70	O		
3436 Institution branch place	C an..70	O		
3207 Country, coded	C an..3	O		ISO 3166 (2 alpha code)
Segment Note:				

SG2 - C 99 - NAD-FII-SG3-SG5				
SG3 - C 9999 - RFF				
RFF - M 1 - REFERENCE				
Function : To specify a reference related to the party specified in the previous NAD segment.				
Segment no : 10				
	EDIFACT	EAN	IND	Description
C506 REFERENCE	M	M		
1153 Reference qualifier	M an..3	M		AHO = REA registration AHZ = Registration number in the cooperative enterprises register ALV = Registered capital reference API = Additional party identification EX = Export licence number FC = Fiscal number IA = Internal vendor number IP = Import licence number IT = Internal customer number RAE = RAEE (WEEE) registration number RPE = Registration number at national register of producers of batteries and accumulators TRB = Tribunal place registration number VA = VAT registration number
1154 Reference number	C an..35	R		
1156 Line number	C an..6	N		
4000 Reference version number	C an..35	N		
<u>Segment Note:</u>				

SG2 - C		99 - NAD-FII-SG3-SG5		
SG5 - C		5 - CTA-COM		
CTA - M		1 - CONTACT INFORMATION		
Function :		To identify a person or a department to whom communication should be directed.		
Segment no: 11				
	EDIFACT	EAN	IND	Description
3139 Contact function, coded	C an..3	R		AD = Accounting contact AP = Accounts payable contact IC = Information contact OC = Order contact SA = Sales administration SD = Shipping contact
C056 DEPARTMENT OR EMPLOYEE DETAILS	C	O		
3413 Department or employee identification	C an..17	O		
3412 Department or employee	C an..35	O		
Segment Note:				

SG2 - C	99 - NAD-FII-SG3-SG5			
SG5 - C	5 - CTA-COM			
COM - C	5 - COMMUNICATION CONTACT			
Function :	To identify a communication number of a department or a person to whom communication should be directed.			
Segment no. :	12			
	EDIFACT	EAN	IND	Description
C076 COMMUNICATION CONTACT	M	M		
3148 Communication number	M an..512	M		
3155 Communication channel qualifier	M an..3	M		EM = Electronic mail FX = Fax TE = Telephone TL = Telex
Segment Note:				

SG7 - C		5 - CUX-DTM		
CUX - M		1 - CURRENCIES		
Function :		To specify currencies used in the transaction and relevant details for the rate of exchange.		
Segment no :		13		
	EDIFACT	EAN	IND	Description
C504 CURRENCY DETAILS	C	R		
6347 Currency details qualifier	M an..3	M		2 = Reference currency
6345 Currency, coded	C an..3	R		ISO 4217
6343 Currency qualifier	C an..3	R		4 = Invoicing currency
6348 Currency rate base	C n..4	N		
C504 CURRENCY DETAILS	C	D		
6347 Currency details qualifier	M an..3	M		3 = Target currency
6345 Currency, coded	C an..3	R		ISO 4217
6343 Currency qualifier	C an..3	R	N	
6348 Currency rate base	C n..4	O	N	
5402 Rate of exchange	C n..12	D	N	
6341 Currency market exchange, coded	C an..3	N		
Segment note:				

SG7 - C		5 - CUX-DTM		
DTM - C		5 - DATE/TIME/PERIOD		
Function	:	To specify the date/time/period reference for the previous monetary unit specified in the segment CUX.		
Segment no.	:	14		
	EDIFACT	EAN	IND	Description
C507 DATE/TIME/PERIOD	M	M		
2005 Date/time/period qualifier	M an..3	M		134 = Rate of exchange date/time
2380 Date/time/period	C an..35	R		
2379 Date/time/period format qualifier	C an..3	R		102=CCYYMMDD
<u>Segment Note:</u>				

SG8 - C		10 - PAT-DTM-PCD-MOA		
PAT - M		1 - PAYMENT TERMS BASIS		
Function :		To specify the payment terms/deadline basis		
Segment no : 15				
	EDIFACT	EAN	IND	Description
4279 Payment terms type qualifier	M an..3	M		20 = Penalty terms 21 = Payment by instalment 22 = Discount 10E = Complete payment
C110 PAYMENT TERMS	C	N	O	
4277 Terms of payment identification	M an..17	M		ZZZ = Mutually defined
1131 Code list qualifier	C an..3	N		
3055 Code list responsible agency, coded	C an..3	N		
4276 Terms of payment	C an..35	O		Payment terms description
4276 Terms of payment	C an..35	O		Payment terms description
C112 TERMS/TIME INFORMATION	C	O		
2475 Payment terms reference, coded	M an..3	M		1 = Date of order 5 = Date of invoice 9 = Date invoice received 21 = Date goods received by buyer 66 = Specified date 70 = Date of issue of transport documents 81 = Date of shipment
2009 Time relation, coded	C an..3	O		1 = Reference date 3 = After reference date 6 = End of month containing the reference date 7 = End of the month following the month of reference date 12E = Whichever is first, the 15th or last day of the month following the payment terms period
2151 Type of period, coded	C an..3	O		D = Day M = Month W = Week Y = Year
2152 Number of periods	C n..3	O		
Segment Note:				

SG8 - C		10 - PAT-DTM-PCD-MOA		
DTM - C		5 - DATE/TIME/PERIOD		
Function	:	To specify date, and/or time, or period related to the payment terms specified in the previous segment PAT		
Segment nr	:	16		
	EDIFACT	EAN	IND	Description
C507 DATE/TIME/REFERENCE	M	M		
2005 Date/time/period qualifier	M an..3	M		13 = Terms net due date
2380 Date/time/period	C an..35	R		
2379 Date/time/period format qualifier	C an..3	R		102 = CCYYMMDD
Segment Note:				

SG8 - C		10 - PAT-DTM-PCD-MOA		
PCD - C		1 - PERCENTAGE DETAILS		
Function :		To specify the discount/penalty/instalment percentage		
Segment no :		17		
	EDIFACT	EAN	IND	Description
C501 PERCENTAGE DETAILS	M	M		
5245 Percentage qualifier	M an..3	M		15 = Penalty percentage 12E = Percentage of due amount
5482 Percentage	C n..10	R		
5249 Percentage basis, coded	C an..3	O	N	
1131 Code list qualifier	C an..3	N		
3055 Code list responsible agency, coded	C an..3	N		
Segment Note:				

SG8 - C	10 - PAT-DTM-PCD-MOA
MOA-C	1 - MONETARY AMOUNT

Function :	To specify the monetary amount of discount/penalty/instalment
Segment no. : 18	

	EDIFACT	EAN	IND	Description
C516 MONETARY AMOUNT	M	M		13 = Amount subject to total monetary discount 201 = Penalty amount 262 = Instalment amount
5025 Monetary amount type qualifier	M an..3	M		
5004 Monetary amount	C n..18	R		
6345 Currency, coded	C an..3	N		
6343 Currency qualifier	C an..3	N		
4405 Status, coded	C an..3	N		

<u>Segment Note:</u>

SG12 - C		5 - TOD-LOC		
TOD - M		1 - TERMS OF DELIVERY OR TRANSPORT		
Function:		To specify the terms of delivery		
Segment no :19				
	EDIFACT	EAN	IND	Description
4055 Terms of delivery function, coded	C an..3	R		2 = Despatch condition
4215 Transport charges method of payment, coded	C an..3	O		
C100 TERMS OF DELIVERY	C	A	O	
4053 Terms of delivery, coded	C an..3	R		CFR = Charges and transportation to the destination CIF = Charges, insurance and transportation to the indicated destination. CIP = Transportation, handling, insurance to the indicated destination. CPT = Delivery and paid handling to the destination DAF = Delivery at frontier - named place
1131 Code list qualifier	C an..3	D	N	
3055 Code list responsible agency, coded	C an..3	D	N	
4052 Terms of delivery	C an..70	O		
4052 Terms of delivery	C an..70	O		
Segment Note:				

SG12 - C		5 - TOD-LOC		
LOC - C		2 - PLACE/LOCATION IDENTIFICATION		
Function :		To identify a country/place/location/related location one/related location two		
Segment no.: 20				
	EDIFACT	EAN	IND	Description
3227 Place/location qualifier	M an..3	M		7 = Place of delivery
C517 LOCATION IDENTIFICATION	C	A		
3225 Place/location identification	C an..25	A		Identification code
1131 Code list qualifier	C an..3	O		
3055 Code list responsible agency, coded	C an..3	O		9 = EAN (International Article Numbering association) 89 = Number assigned by the distributor 90 = Number assigned by the manufacturer
3224 Place/location	C an..70	O		
C519 RELATED LOCATION ONE IDENTIFICATION	C	O	N	
3223 Related place/location one identification	C an..25	R		
1131 Code list qualifier	C an..3	O		
3055 Code list responsible agency, coded	C an..3	O		
3222 Related place/location one	C an..70	O		
C553 RELATED LOCATION TWO IDENTIFICATION	C	O	N	
3233 Related place/location two identification	C an..25	R		
1131 Code list qualifier	C an..3	O		
3055 Code list responsible agency, coded	C an..3	O		
3232 Related place/location two	C an..70	O		
5479 Relation, coded	C an..3	N		
Segment Note:				

SG15 - C 9999 - ALC-SG18-SG19				
ALC - M 1 - ALLOWANCE OR CHARGE				
Function : To specify allowance or charge details				
Segment no.: 21				
	EDIFACT	EAN	IND	Description
5463 Allowance or charge qualifier	M an..3	M		A = Allowance C = Charge N = No allowance or charge (special conditions)
C552 ALLOWANCE/CHARGE INFORMATION	C	O		
1230 Allowance or charge number	C an..35	O		
5189 Allowance/charge description, coded	C an..3	O		64E = Yearly turnover allowance/charge
4471 Settlement, coded	C an..3	O		
1227 Calculation sequence indicator, coded	C an..3	D		1 = First step of calculation 2 = Second step of calculation 3 = Third step of calculation Etc, etc, etc,
C214 SPECIAL SERVICES IDENTIFICATION	C	D		
7161 Special services, coded	C an..3	R		DI = Discount EAB = Early payment allowance FC = Freight charge FI = Finance charge IS = Invoice services PAD = Promotional allowance PC = Packing RAA = Rebate RAD = Returnable container SER = Service charge TD = Trade discount VAB = Volume discount VEJ = Environmental protection or clean-up service X14 = Preferential merchandising location service SIA = SIAE charge SSV = Experimental glass station contribution COB = COBAT and lead charge recovery

1131 Code list qualifier	C an..3	O	COU = Partial recovery I.C. and C.O.U.
3055 Code list responsible agency, coded	C an..3	D	Insert the code"9" = EAN (International European Article Numbering Association) only when in the DE 7161 one of the following codes is used: SER, VEJ, X14
7160 Special services	C an..35	O	
7160 Special services	C an..35	O	
Segment Note:			

SG15 - C 9999 - ALC-SG18-SG19				
SG18 - C 1 - PCD				
PCD - M 1 - PERCENTAGE DETAILS				
Function: To specify percentage information to calculate the discount or charge amount.				
Segment no.: 22				
	EDIFACT	EAN	IND	Description
C501 PERCENTAGE DETAILS	M	M		
5245 Percentage qualifier	M an..3	M		3 = Allowance or charge
5482 Percentage	C n..10	R		
5249 Percentage basis, coded	C an..3	O	N	
1131 Code list qualifier	C an..3	N		
3055 Code list responsible agency, coded	C an..3	N		
Segment Note:				

SG15 - C 9999 - ALC-SG18-SG19				
SG19 - C 2 - MOA				
MOA - M 1 - MONETARY AMOUNT				
Function : To specify a monetary amount of the discount/charge				
Segment no : 23				
	EDIFACT	EAN	IND	Description
C516 MONETARY AMOUNT	M	M		8 = Allowance or charge amount
5025 Monetary amount type qualifier	M an..3	M		
5004 Monetary amount	C n..18	R		
6345 Currency, coded	C an..3	N		
6343 Currency qualifier	C an..3	N		
4405 Status, coded	C an..3	N		
Segment Note:				

SG25 - C 9999999 - LIN-PIA-IMD-QTY-DTM-FTX-SG26-SG28-SG29-SG33-SG34-SG38				
LIN - M 1 - LINE ITEM				
Function: To identify a line item and configuration				
Segment no : 24				
	EDIFACT	EAN	IND	Description
1082 Line item number	C n..6	R		Line number of the invoice
1229 Action request, coded	C an..3	N		
C212 ITEM NUMBER IDENTIFICATION	C	D	O	
7140 Item number	C an..35	R		
7143 Item number type, coded	C an..3	R		EN = EAN Code UP = UPC Code
1131 Code list qualifier	C an..3	N		
3055 Code list responsible agency, coded	C an..3	O	N	
C829 SUB-LINE INFORMATION	C	D		
5495 Sub-line indicator, coded	C an..3	R		1 = Sub-line information
1082 Line item number	C n..6	R		
1222 Configuration level	C n..2	N		
7083 Configuration, coded	C an..3	D	N	
Segment Note:				

SG25 - C 9999999 - LIN-PIA-IMD-QTY-DTM-FTX-SG26-SG28-SG29-SG33-SG34-SG38				
PIA - C 25 - ADDITIONAL PRODUCT ID				
Function : To specify additional or substitutional item identification codes				
Segment no. : 25				
	EDIFACT	EAN	IND	Description
4347 Product id. function qualifier	M an..3	M		1 = Additional identification 5 = Product identification
C212 ITEM NUMBER IDENTIFICATION	M	M		
7140 Item number	C an..35	R		
7143 Item number type, coded	C an..3	R		EN = EAN code IN = Buyer's item number UP = UPC code SA = Supplier's article number
1131 Code list qualifier	C an..3	N		
3055 Code list responsible agency, coded	C an..3	O	N	
C212 ITEM NUMBER IDENTIFICATION	C	O		
7140 Item number	C an..35	R		
7143 Item number type, coded	C an..3	R		
1131 Code list qualifier	C an..3	N		
3055 Code list responsible agency, coded	C an..3	O	N	
C212 ITEM NUMBER IDENTIFICATION	C	O		
7140 Item number	C an..35	R		
7143 Item number type, coded	C an..3	R		
1131 Code list qualifier	C an..3	N		
3055 Code list responsible agency, coded	C an..3	O	N	
C212 ITEM NUMBER IDENTIFICATION	C	O		
7140 Item number	C an..35	R		
7143 Item number type, coded	C an..3	R		
1131 Code list qualifier	C an..3	N		
3055 Code list responsible agency, coded	C an..3	O	N	

C212 ITEM NUMBER IDENTIFICATION		C	O		
7140 Item number		C an..35	R		
7143 Item number type, coded		C an..3	R		
1131 Code list qualifier		C an..3	N		
3055 Code list responsible agency, coded		C an..3	O	N	
Segment Note:					

DRAFT

SG25 - C 9999999 - LIN-PIA-IMD-QTY-DTM-FTX-SG26-SG28-SG29-SG33-SG34-SG38				
IMD - C 10 - ITEM DESCRIPTION				
Function : To describe an item in either an industry or free format.				
Segment no. : 26				
	EDIFACT	EAN	IND	Description
7077 Item description type, coded	C an..3	R		B = Code and text C = Code F = Free format
7081 Item characteristic, coded	C an..3	O	N	
C273 ITEM DESCRIPTION	C	A		
7009 Item description identification	C an..17	O		CU = Consumer Unit (EAN Code) DU = Despatch Unit (Code EAN) TU = Traded Unit (Code EAN)
1131 Code list qualifier	C an..3	O	N	
3055 Code list responsible agency, coded	C an..3	O		9 = EAN (International Article Numbering association) 91 = Assigned by supplier 92 = Assigned by buyer
7008 Item description	C an..35	O		
7008 Item description	C an..35	O		Should be inserted the code related to the textile composition of the item.
3453 Language, coded	C an..3	O	N	
7383 Surface/layer indicator, coded	C an..3	N		
<u>Segment Note:</u>				

SG25 - C 9999999 - LIN-PIA-IMD-QTY-DTM-FTX-SG26-SG28-SG29-SG33-SG34-SG38				
QTY - C 5 - QUANTITY				
Function : To specify the quantity of the product.				
Segment no. :27				
	EDIFACT	EAN	IND	Description
C186 QUANTITY DETAILS	M	M		
6063 Quantity qualifier	M an..3	M		46 = Delivered quantity 47 = Invoiced quantity 59 = Number of consumer units in the traded unit
6060 Quantity	M n..15	M		
6411 Measure unit qualifier	C an..3	D	R	CMT = Centimetre GRM = Gram KGM = Kilogram LTR = Litre MLT = Millilitre MTR = Metre MTK = Square meter PCE = Piece PC1 = Percent
Segment Note:				

SG25 - C 9999999 - LIN-PIA-IMD-QTY-DTM-FTX-SG26-SG28-SG29-SG33-SG34-SG38				
DTM - C 35 - DATE/TIME/PERIOD				
Function : To specify date, and/or time, or period				
Segment no : 28				
	EDIFACT	EAN	IND	Description
C507 DATE/TIME/PERIOD	M	M		
2005 Date/time/period qualifier	M an..3	M		263 = Invoicing period 95E = Service completed date/time
2380 Date/time/period	C an..35	R		
2379 Date/time format qualifier	C an..3	R		102 = CCYYMMDD 203 = CCYYMMDDHHMM 718 = CCYYMMDD - CCYYMMDD
<u>Segment Note:</u>				

SG25 - C 9999999 - LIN-PIA-IMD-QTY-DTM-FTX-SG26-SG28-SG29-SG33-SG34-SG38				
FTX- C 5-FREE TEXT				
Function : To provide free form or coded text information.				
Segment no : 29				
	EDIFACT	EAN	IND	Description
4451 Text subject qualifier, coded	M an..3	M		AAI = General information CUS = Customs declaration information LIN = Line item information ZZZ = Mutually defined text 1 = Text for subsequent use
4453 Text function, coded	C an..3	O		
C107 TEXT REFERENCE	C	D		
4441 Free text, coded	M an..3	M		
				L01 = Sale L02 = Return L03 = Give-away L04 = Empty L05 = Packaging L06 = Deposits L07 = Difference amount L08 = Price difference L09 = Merchandise discount L10 = Credit for dispute L11 = VAT credit/debit L12 = Free sample L13 = Printed advertising material L14 = Advertising material not paper
1131 Code list qualifier	C an..3	O		
3055 Code list responsible agency, coded	C an..3	O		XIN = GS1 Italy
C108 TEXT LITERAL	C	D		
4440 Free text	M an..70	M		
4440 Free text	C an..70	O		
4440 Free text	C an..70	O		
4440 Free text	C an..70	O		
4440 Free text	C an..70	O		
3453 Language, coded	C an..3	D		IT = Italian
<u>Segment Note:</u>				

SG25 - C 9999999 - LIN-PIA-IMD-QTY-DTM-FTX-SG26-SG28-SG29-SG33-SG34-SG38				
SG26 - C 5 - MOA				
MOA - M 1 - MONETARY AMOUNT				
Function : To specify a monetary amounts related to the invoice line.				
Segment no : 30				
	EDIFACT	EAN	IND	Description
C516 MONETARY AMOUNT	M	M		
5025 Monetary amount type qualifier	M an..3	M		203 = Line item amount
5004 Monetary amount	C n..18	R		
6345 Currency, coded	C an..3	O		ISO 4217 (3 alpha)
6343 Currency qualifier	C an..3	O		4 = Invoicing currency
4405 Status, coded	C an..3	N		
Segment Note:				

SG25 - C 9999999 - LIN-PIA-IMD-QTY-DTM-FTX-SG26-SG28-SG29-SG33-SG34-SG38				
SG28 - C 25 - PRI				
PRI - M 1 - PRICE DETAILS				
Function: To specify price information				
Segment no. : 31				
	EDIFACT	EAN	IND	Description
C509 PRICE INFORMATION	C	R		
5125 Price qualifier	M an..3	M		AAA = Calculation net AAB = Calculation gross INF = Information
5118 Price	C n..15	R		
5375 Price type, coded	C an..3	O		CA = Catalogue CT = Contract
5387 Price type qualifier	C an..3	O		PRP = Promotional price
5284 Unit price basis	C n..9	D		
6411 Measure unit qualifier	C an..3	D	R	CMT =Centimetre GRM =Gram HLT = Hectolitre KGM =Kilogram LTR = Litre MLT = Millilitre MTR = Metre MTK = Square meter PCE = Piece P1 = Percent
5213 Sub-line price change, coded	C an..3	N		
Segment Note:				

SG25 - C 9999999 - LIN-PIA-IMD-QTY-DTM-FTX-SG26-SG28-SG29-SG33-SG34-SG38				
SG29 - C 10 - RFF-DTM				
RFF - M 1 - REFERENCE				
Function : To specify a reference for the order line				
Segment no : 32				
	EDIFACT	EAN	IND	Description
C506 REFERENCE	M	M		
1153 Reference qualifier	M an..3	M		AAK = Despatch advice number AER = Project specification number ALQ = Returns notice number CD = Credit note number CO = Buyers order number DL = Debit note number GC = Government contract number IV = Invoice number SRN = Shipment reference number VN = Order number (supplier) ZZZ = Mutually defined reference number
1154 Reference number	C an..35	R		
1156 Line number	C an..6	O		
4000 Reference version number	C an..35	N		
Segment Note:				

SG25 - C 9999999 - LIN-PIA-IMD-QTY-DTM-FTX-SG26-SG28-SG29-SG33-SG34-SG38				
SG29 - C 10 - RFF-DTM				
DTM - C 5 - DATE/TIME/PERIOD				
Function : To specify date/time/period related to the reference specified in the segment RFF.				
Segment no : 33				
	EDIFACT	EAN	IND	Description
C507 DATE/TIME/PERIOD	M	M		
2005 Date/time/period qualifier	M an..3	M		171 = Reference date/time
2380 Date/time/period	C an..35	R		
2379 Date/time/period format qualifier	C an..3	R		102=CCYYMMDD
<u>Segment Note:</u>				

SG25 - C 9999999 - LIN-PIA-IMD-QTY-DTM-FTX-SG26-SG28-SG29-SG33-SG34-SG38				
SG33 - C 99 - TAX-MOA				
TAX- M 1-DUTY/TAX/FEE DETAILS				
Function: To provide free form or coded text information.				
Segment no : 34				
	EDIFACT	EAN	IND	Description
5283 Duty/tax/fee function qualifier	M an..3	M		7 = Tax
C241 DUTY/TAX/FEE TYPE	C	D		
5153 Duty/tax/fee type, coded	C an..3	O		101 = Sugar tax ENV = Environmental tax VAT = Value added tax I01 = Tax of lubricating oils I02 = Production tax I03 = State mark SWT = Withholding Tax OTH = Other taxes
1131 Code list qualifier, coded	C an..3	O	N	
3055 Code list responsible agency, coded	C an..3	O		XIN = GS1 Italy
5152 Duty/tax/fee type	C an..35	O		
C533 DUTY/TAX/FEE ACCOUNT DETAIL	C	O	N	
5289 Duty/tax/fee account identification	M an..6	M		
1131 Code list qualifier, coded	C an..3	O		
3055 Code list responsible agency, coded	C an..3	O		
5286 Duty/tax/fee assessment basis	C an..15	O	N	
C243 DUTY/TAX/FEE DETAIL	C	A		
5279 Duty/tax/fee rate identification	C an..7	O	N	
1131 Code list qualifier	C an..3	O	N	
3055 Code list responsible agency, coded	C an..3	O	N	
5278 Duty/tax/fee rate	C an..17	R		Rate of tax/duty
5273 Duty/tax/fee rate basis identification	C an..12	O	N	

1131 Code list qualifier, coded	C an..3	O	N	
3055 Code list responsible agency, coded	C an..3	O	N	
5305 Duty/tax/fee category, coded	C an..3	D		A = Mixed tax rate E = Exempt from tax G = Not taxable art. 8 H = Higher rate S = Standard rate Z = Zero rated goods
3446 Party tax identification number	C an..20	O		<i>Alternatively use the codes reported in the segment note</i>
Segment Note:				

Segment Note:

The following list contains the exemption / non-tax codes allowed in DE 5305:

A01 = VAT PAID PUBLISHER ART. 74 par. C - DPR 26/10/72 n.633
A02 = VAT PAYIED BY SUPPLIER ART. 2 comma 2 n.4 DPR 26/10/72 n.633
A03 = VAT PAYIED BY BUYER (Reverse Charge) Art. 17, comma 6, lett. C del DPR 26/10/72 n. 633
A04 = VAT PAYIED BY BUYER (Reverse Charge) Art. 17, comma 6, lett. D-quater del DPR 26/10/72 n. 633
A05 = VAT PAYIED BY BUYER (Reverse Charge) Art. 17, comma 6, lett. B del DPR 26/10/72 n. 633
A06 = VAT PAYIED BY BUYER (Reverse Charge) Art. 17, comma 6, lett. A-ter del DPR 26/10/72 n. 633
D01 = NON DETRAIBILE 19 DPR 26/10/72 n. 633
E01 = EXCLUDED ART. 2 comma 3 e ART. 5 DPR 26/10/72 n.633
E02 = EXCLUDED ART. 5 DPR 26/10/72
E03 = EXCLUDED ART. 6 comma 5 DPR 26/10/72 n.633
E04 = EXCLUDED ART. 7 DPR 26/10/72 n.633
E05 = EXCLUDED ART. 15 DPR 26/10/72 n.633
E06 = EXCLUDED ART. 17 comma 3 DPR 26/10/72 n.633
E07 = EXCLUDED ART. 22 DPR 26/10/72 n.633
E08 = EXCLUDED ART. 1 DPR 26/10/72 n.633
E09 = EXCLUDED ART. 2 DPR 26/10/72 n.633
E10 = EXCLUDED ART. 2 comma 2 n.4 DPR 26/10/72 n.633
E11 = EXCLUDED ART. 3 DPR 26/10/72 n.633
E12 = EXCLUDED ART. 26 comma 2 DPR 26/10/72 n.633
E13 = EXCLUDED ART. 15 comma 4 DPR 26/10/72 n.633
E14 = EXCLUDED ART. 15 comma 1 punto 3 DPR 26/10/72 n.633
E15 = EXCLUDED ART. 26 comma 3 DPR 26/10/72 n. 633
E16 = EXCLUDED ART. 7 bis DPR 26/10/72 n. 633
E17 = EXCLUDED ART. 7 ter DPR 26/10/72 n. 633
G01 = NOT TAXABLE ART. 8 comma 1 lettera a DPR 26/10/72 n.633
G02 = NOT TAXABLE ART. 8 comma 1 lettera a DPR 26/10/72 n.633 (Outside scope of VAT).
G03 = NOT TAXABLE ART. 8 comma 1 lettera c DPR 26/10/72 n.633
G04 = NOT TAXABLE ART. 8 bis comma 1 lettera d DPR 26/10/72 n.633
G05 = NOT TAXABLE ART. 8 comma 2 DPR 26/10/72 n.633
G06 = NOT TAXABLE ART. 8 bis comma 2 DPR 26/10/72 n.633
G07 = NOT TAXABLE ART. 8/71 DPR 26/10/72 n.633
G08 = NOT TAXABLE ART. 138 Direttiva 112/2006/CE (VAT exempts intraEU-Art 138 D2006/112)
G09 = NOT TAXABLE ART. 38-quater DPR 633/72
G10 = NOT TAXABLE ART. 8 comma 1 lettera B DPR 633/72
N01 = NOT TAXABLE ART. 9DPR 26/10/72 n.633
N02 = NOT TAXABLE ART. 26 comma 2 DPR 26/10/72 n.633
N03 = NOT TAXABLE ART. 71 DPR 26/10/72 n.633
N04 = NOT TAXABLE ART. 71 comma 1 lettera c DPR 26/10/72 n.633
N05 = NOT TAXABLE ART. 72DPR 26/10/72 n.633
N06 = NOT TAXABLE ART. 72 comma 6 DPR 26/10/72 n.633
N07 = NOT TAXABLE ART. 73 comma 2 DPR26/10/72 n.633
N08 = Not liable art. 26 recovery not appliedIVA DPR 26/10/72 n.633 (ex P05)
N09 = Not liable art.74 1° Comm Lett. D DPR 26/10/72 n. 633 (ex P06)
N10 = NOT TAXABLE ART. 9 comma 1
N11 = NOT TAXABLE ART. 38 D.L. n° 331/1993
N12 = NOT TAXABLE ART.41 D.L. n° 331/1993(ex codice X02)
N13 = NOT TAXABLE ART. 58 D.L. n° 331/1993 (ex codice X03)
N14 = NOT TAXABLE ART. 74 commea 1 lettera E DPR 26/10/72 n.633
P01= Outside scope of VAT art.2 Lett. aDPR 26/10/72 n.633
P02= Outside scope of VAT art.2 Lett. iDPR 26/10/72 n.633
P03= Outside scope of VAT art. 7 comma 2 DPR 26/10/72 n. 633
P04 = Outside scope of VAT art. 2 comma 3 lettera "m"
P05 = Outside scope of VAT art. 8 comma 35 legge 67/88
P06 = Outside scope of VAT art. 2 comma lettera "D". (management free samples)
P07 = Outside scope of VAT art.74 1° Comm Lett. D DPR 26/10/72 n. 633
P08 = Outside scope of VAT art.6 -quarter DPR 26/10/72 m.633
X01 = EXEMPT ART. 10 DPR 26/10/72 n.633
X02 = EXEMPT Art. 41 D.L.n. 331/1993
X03 = EXEMPT Art. 58 D.L.n. 331/1993

X04 = EXEMPT Art. 10 n. 19 X05 = EXEMPT Art. 10 n. 22 X06 = EXEMPT Art. 10 comma 1 n.4 X07 = EXEMPT Art. 124 DL 34/20
--

In the case of new exemption or non-taxable (not included in the table above), the value to be entered in DE 5305 is Z, G or E and it is mandatory to value the DE 5152 with the description of the exemption.
--

DRAFT

SG25 - C 9999999 - LIN-PIA-IMD-QTY-DTM-FTX-SG26-SG28-SG29-SG33-SG34-SG38				
SG33 - C 99 - TAX-MOA				
MOA - C 1 - MONETARY AMOUNT				
Function: To specify a monetary amounts.				
Segment no : 35				
	EDIFACT	EAN	IND	Description
C516 MONETARY AMOUNT	M	M		
5025 Monetary amount type qualifier	M an..3	M		124 = Tax amount 125 = Taxable amount 39E = Prepaid amount related to the obligatory contribution
5004 Monetary amount	C n..18	R		
6345 Currency, coded	C an..3	N		
6343 Currency qualifier	C an..3	N		
4405 Status, coded	C an..3	N		
Segment Note:				

SG25- C 9999999 - LIN-PIA-IMD-QTY-DTM-FTX-SG26-SG28-SG29-SG33-SG34-SG38				
SG34- C 20 - NAD-SG35				
NAD - M 1 - NAME AND ADDRESS				
Function: To specify the name/address of the party and their related function.				
Segment no : 36				
	EDIFACT	EAN	IND	Description
3035 Party qualifier	M an..3	M		CZ = Consignor DP = Delivery party PW = Despatch party SF = Ship from X32 = Refund party
C082 PARTY IDENTIFICATION DETAILS	C	A		
3039 Party id identification, coded	M an..35	M		GS1 GLN (EAN location number - format n.13)
1131 Code list qualifier	C an..3	N		
3055 Code list responsible agency, coded	C an..3	R		9 = EAN (International Article Numbering Association)
C058 NAME AND ADDRESS	C	N		
3124 Name and address line	M an..35			
3124 Name and address line	C an..35			
3124 Name and address line	C an..35			
3124 Name and address line	C an..35			
3124 Name and address line	C an..35			
C080 PARTY NAME	C	D		
3036 Party name	M an..35	M		Party name in clear text
3036 Party name	C an..35	O		
3036 Party name	C an..35	O		
3036 Party name	C an..35	O		
3036 Party name	C an..35	O		
3045 Party name format, coded	C an..3	O		
C059 STREET	C	D		
3042 Street and number/p.o box	M an..35	M		
3042 Street and number/p.o box	C an..35	O		
3042 Street and number/p.o box	C an..35	O		
3042 Street and number/p.o box	C an..35	O		
3164 City name	C an..35	D		

3229 Country sub-entity identification	C an..9	D	Province
3251 Postcode identification	C an..9	D	
3207 Country, coded	C an..3	D	
Segment Note:			

DRAFT

SG25- C 9999999 - LIN-PIA-IMD-QTY-DTM-FTX-SG26-SG28-SG29-SG33-SG34-SG38				
SG34- C 20 - NAD-SG35				
SG35- C 5 - RFF				
RFF - M 1 - REFERENCE				
Function : To specify a reference.				
Segment no : 37				
	EDIFACT	EAN	IND	Description
C506 REFERENCE	M	M		IA = Internal vendor number IT = Internal customer number VA = VAT registration number
1153 Reference qualifier	M an..3	M		
1154 Reference number	C an..35	R		
1156 Line number	C an..6	N		
4000 Reference version number	C an..35	N		
<u>Segment Note:</u>				

SG25- C 9999999 - LIN-PIA-IMD-QTY-FTX-SG26-SG28-SG29-SG33-SG34-SG38				
SG38- C 15 - ALC-SG40-SG41				
ALC - M 1 - ALLOWANCE OR CHARGE				
Function: To specify allowance or charge details				
Segment no.: 37				
	EDIFACT	EAN	IND	Description
5463 Allowance or charge qualifier	M an..3	M		A = Allowance C = Charge N = No allowance or charge (special conditions)
C552 ALLOWANCE/CHARGE INFORMATION	C	O		
1230 Allowance or charge number	C an..35	O		
5189 Allowance/charge description, coded	C an..3	O		64E = Yearly turnover allowance/charge
4471 Settlement, coded	C an..3	O		
1227 Calculation sequence indicator, coded	C an..3	D		1 = First step of calculation 2 = Second step of calculation 3 = Third step of calculation Etc, etc, etc,
C214 SPECIAL SERVICES ID.	C	D		
7161 Special services, coded	C an..3	R		AEO = Eco contribution RAEE (WEEE) DI = Discount EAB = Early payment allowance FC = Freight charge FI = Finance charge IS = Invoice services PAD = Promotional allowance PC = Packing RAA = Rebate RAD = Returnable container SER = Service charge TD = Trade discount VAB = Volume discount VEJ = Environmental protection or clean-up service

			X14 = Preferential merchandising location service SIA = SIAE charge SSV = Experimental glass station contribution COB = COBAT and lead charge recovery COU = Partial recovery I.C. and C.O.U.
1131 Code list qualifier	C an..3	O	
3055 Code list responsible agency, coded	C an..3	D	Insert the code "9" = EAN (International European Article Numbering Association) only when in the DE 7161 one of the following codes is used: SER, VEJ, X14
7160 Special services	C an..35	O	
7160 Special services	C an..35	O	
Segment Note:			

SG25- C 9999999 - LIN-PIA-IMD-QTY-DTM-FTX-SG26-SG28-SG29-SG33-SG34-SG38				
SG38- C 15 - ALC-SG40-SG41				
SG40- C 1 - PCD				
PCD - M 1 - PERCENTAGE DETAILS				
Function: To specify percentage information.				
Segment no.: 39				
	EDIFACT	EAN	IND	Description
C501 PERCENTAGE DETAILS	M	M		
5245 Percentage qualifier	M an..3	M		3 = Allowance or charge
5482 Percentage	C n..10	R		
5249 Percentage basis, coded	C an..3	O	N	
1131 Code list qualifier	C an..3	N		
3055 Code list responsible agency, coded	C an..3	N		
Segment Note:				

SG25 - C 9999999 - LIN-PIA-IMD-QTY-DTM-FTX-SG26-SG28-SG29-SG33-SG34-SG38				
SG38 - C 15 - ALC-SG40-SG41				
SG41 - C 2 - MOA				
MOA - M 1 - MONETARY AMOUNT				
Function : To specify the monetary amount				
Segment no. : 40				
	EDIFACT	EAN	IND	Description
C516 MONETARY AMOUNT	M	M		
5025 Monetary amount type qualifier	M an..3	M		8 = Allowance or charge amount 13 = Amount subject to total monetary discount X31 = Unit allowance amount (EAN Code)
5004 Monetary amount	C n..18	R		
6345 Currency, coded	C an..3	N	O	ISO 4217 (to be used only for valued lines)
6343 Currency qualifier	C an..3	N		
4405 Status, coded	C an..3	N		
Segment Note:				

UNS - M		1 - SECTION CONTROL		
Function :		To separate header, detail, and summary sections of a message.		
Segment no. : 41				
	EDIFACT	EAN	IND	Description
0081 Section identification	M a1	M		S = Detail/summary section separator
Segment Note:				

SG48 - M 100 - MOA				
MOA - M 1 - MONETARY AMOUNT				
Function : To specify monetary amount.				
Segment no. : 42				
	EDIFACT	EAN	IND	Description
C516 MONETARY AMOUNT	M	M		
5025 Monetary amount type qualifier	M an..3	M		9 = Amount due/amount payable 66 = Good item total 79 = Total line items amount 86 = Message total monetary amount 125 = Taxable amount 176 = Message total VAT amount 177 = Message total amount prepaid I88 = Total invoice before payment discount
5004 Monetary amount	C n..18	R		
6345 Currency, coded	C an..3	O		ISO 4217
6343 Currency qualifier	C an..3	O		
4405 Status, coded	C an..3	N		
Segment Note:				

SG50 - C		10 - TAX-MOA		
TAX- M		1- DUTY/TAX/FEE DETAILS		
Function:		To specify relevant duty/tax/fee information.		
Segment no : 42				
	EDIFACT	EAN	IND	Description
5283 Duty/tax/fee function qualifier	M an..3	M		7 = Tax
C241 DUTY/TAX/FEE TYPE	C	D		
5153 Duty/tax/fee type, coded	C an..3	O		101= Sugar tax ENV = Environmental tax VAT = Value added tax I01 = Tax of lubricating oils I02 = Production tax I03 = State mark OTH = Other taxes
1131 Code list qualifier	C an..3	O	N	
3055 Code list responsible agency, coded	C an..3	O		XIN = GS1 Italy
5152 Duty/tax/fee type	C an..35	O		
C533 DUTY/TAX/FEE ACCOUNT DETAIL	C	O	N	
5289 Duty/tax/fee account identification	M an..6	M		
1131 Code list qualifier	C an..3	O		
3055 Code list responsible agency, coded	C an..3	O		
5286 Duty/tax/fee assessment basis	C an..15	O	N	
C243 DUTY/TAX/FEE DETAIL	C	A		
5279 Duty/tax/fee rate identification	C an..7	O		
1131 Code list qualifier	C an..3	O		
3055 Code list responsible agency, coded	C an..3	O		
5278 Duty/tax/fee rate	C an..17	R		Rate of tax/duty
5273 Duty/tax/fee rate basis identification	C an..12	O		
1131 Code list qualifier	C an..3	O		

3055 Code list responsible agency, coded	C an..3	O	
5305 Duty/tax/fee category, coded	C an..3	D	E = Exempt from tax G = Not taxable art. 8 H = Higher rate S = Standard rate Z = Zero rated goods Alternatively use the codes reported in the segment note.
3446 Party tax identification number	C an..20	O	
Segment Note:			

Segment Note:

The following list contains the exemption / non-tax codes allowed in DE 5305:

A01 = VAT PAID PUBLISHER ART. 74 par. C - DPR 26/10/72 n.633
A02 = VAT PAYIED BY SUPPLIER ART. 2 comma 2 n.4 DPR 26/10/72 n.633
A03 = VAT PAYIED BY BUYER (Reverse Charge) Art. 17, comma 6, lett. C del DPR 26/10/72 n. 633
A04 = VAT PAYIED BY BUYER (Reverse Charge) Art. 17, comma 6, lett. D-quater del DPR 26/10/72 n. 633
A05 = VAT PAYIED BY BUYER (Reverse Charge) Art. 17, comma 6, lett. B del DPR 26/10/72 n. 633
A06 = VAT PAYIED BY BUYER (Reverse Charge) Art. 17, comma 6, lett. A-ter del DPR 26/10/72 n. 633
D01 = NON DETRAIBILE 19 DPR 26/10/72 n. 633
E01 = EXCLUDED ART. 2 comma 3 e ART. 5 DPR 26/10/72 n.633
E02 = EXCLUDED ART. 5 DPR 26/10/72
E03 = EXCLUDED ART. 6 comma 5 DPR 26/10/72 n.633
E04 = EXCLUDED ART. 7 DPR 26/10/72 n.633
E05 = EXCLUDED ART. 15 DPR 26/10/72 n.633
E06 = EXCLUDED ART. 17 comma 3 DPR 26/10/72 n.633
E07 = EXCLUDED ART. 22 DPR 26/10/72 n.633
E08 = EXCLUDED ART. 1 DPR 26/10/72 n.633
E09 = EXCLUDED ART. 2 DPR 26/10/72 n.633
E10 = EXCLUDED ART. 2 comma 2 n.4 DPR 26/10/72 n.633
E11 = EXCLUDED ART. 3 DPR 26/10/72 n.633
E12 = EXCLUDED ART. 26 comma 2 DPR 26/10/72 n.633
E13 = EXCLUDED ART. 15 comma 4 DPR 26/10/72 n.633
E14 = EXCLUDED ART. 15 comma 1 punto 3 DPR 26/10/72 n.633
E15 = EXCLUDED ART. 26 comma 3 DPR 26/10/72 n. 633
E16 = EXCLUDED ART. 7 bis DPR 26/10/72 n. 633
E17 = EXCLUDED ART. 7 ter DPR 26/10/72 n. 633
G01 = NOT TAXABLE ART. 8 comma 1 lettera a DPR 26/10/72 n.633
G02 = NOT TAXABLE ART. 8 comma 1 lettera a DPR 26/10/72 n.633 (Outside scope of VAT).
G03 = NOT TAXABLE ART. 8 comma 1 lettera c DPR 26/10/72 n.633
G04 = NOT TAXABLE ART. 8 bis comma 1 lettera d DPR 26/10/72 n.633
G05 = NOT TAXABLE ART. 8 comma 2 DPR 26/10/72 n.633
G06 = NOT TAXABLE ART. 8 bis comma 2 DPR 26/10/72 n.633
G07 = NOT TAXABLE ART. 8/71 DPR 26/10/72 n.633
G08 = NOT TAXABLE ART. 138 Direttiva 112/2006/CE (VAT exempts intraEU-Art 138 D2006/112)
G09 = NOT TAXABLE ART. 38-quater DPR 633/72
G10 = NOT TAXABLE ART. 8 comma 1 lettera B DPR 633/72
N01 = NOT TAXABLE ART. 9 DPR 26/10/72 n.633
N02 = NOT TAXABLE ART. 26 comma 2 DPR 26/10/72 n.633
N03 = NOT TAXABLE ART. 71 DPR 26/10/72 n.633
N04 = NOT TAXABLE ART. 71 comma 1 lettera c DPR 26/10/72 n.633
N05 = NOT TAXABLE ART. 72 DPR 26/10/72 n.633
N06 = NOT TAXABLE ART. 72 comma 6 DPR 26/10/72 n.633
N07 = NOT TAXABLE ART. 73 comma 2 DPR 26/10/72 n.633
N08 = Not liable art. 26 recovery not applied IVA DPR 26/10/72 n.633 (ex P05)
N09 = Not liable art.74 1° Comm Lett. D DPR 26/10/72 n. 633 (ex P06)
N10 = NOT TAXABLE ART. 9 comma 1
N11 = NOT TAXABLE ART. 38 D.L. n° 331/1993
N12 = NOT TAXABLE ART.41 D.L. n° 331/1993 (ex codice X02)
N13 = NOT TAXABLE ART. 58 D.L. n° 331/1993 (ex codice X03)
N14 = NOT TAXABLE ART.74 comma 1 lettera E DPR 26/10/72 n.633
P01= Outside scope of VAT art.2 Lett. a DPR 26/10/72 n.633
P02= Outside scope of VAT art.2 Lett. i DPR 26/10/72 n.633
P03= Outside scope of VAT art. 7 comma 2 DPR 26/10/72 n. 633
P04 = Outside scope of VAT art. 2 comma 3 lettera "m"
P05 = Outside scope of VAT art. 8 comma 35 legge 67/88
P06 = Outside scope of VAT art. 2 comma lettera "D". (management free samples)
P07 = Outside scope of VAT art.74 1° Comm Lett. D DPR 26/10/72 n. 633
P08 = Outside scope of VAT art.6 - quarter DPR 26/10/72 n.633
X01 = EXEMPT ART. 10 DPR 26/10/72 n.633
X02 = EXEMPT Art. 41 D.L.n. 331/1993
X03 = EXEMPT Art. 58 D.L.n. 331/1993

X04 = EXEMPT Art. 10 n. 19
X05 = EXEMPT Art. 10 n. 22
X06 = EXEMPT Art.10 comma 1 n.4
X07 = EXEMPT Art.124 DL 34/2020

In the case of new exemption or non-taxable (not included in the table above), the value to be entered in DE 5305 is Z, G or E and it is mandatory to value the DE 5152 with the description of the exemption/non-taxable.

DRAFT

SG50 - C 10 - TAX-MOA				
MOA - C 2 - MONETARY AMOUNT				
Function : To specify monetary amount summary.				
Segment no. : 44				
	EDIFACT	EAN	IND	Description
C516 MONETARY AMOUNT	M	M		
5025 Monetary amount type qualifier	M an..3	M		124 = Tax amount 125 = Taxable amount 165 = Adjustment 39E = Prepaid amount related to the obligatory contribution
5004 Monetary amount	C n..18	R		
6345 Currency, coded	C an..3	N	O	ISO 4217
6343 Currency qualifier	C an..3	O		
4405 Status, coded	C an..3	N		
Segment Note:				

SG51 - C		15 - ALC-MOA		
ALC - M		1 - ALLOWANCE OR CHARGE		
Function:		To specify allowance or charge details		
Segment no.: 45				
	EDIFACT	EAN	IND	Description
5463 Allowance or charge qualifier	M an..3	M		A = Allowance C = Charge N = No allowance or charge (special conditions)
C552 ALLOWANCE/CHARGE INFORMATION	C	O		
1230 Allowance or charge number	C an..35	O		
5189 Allowance/charge description, coded	C an..3	O		64E = Yearly turnover allowance/charge
4471 Settlement, coded	C an..3	O		
1227 Calculation sequence indicator, coded	C an..3	D		1 = First step of calculation 2 = Second step of calculation 3 = Third step of calculation Etc, etc, etc,
C214 SPECIAL SERVICES ID.	C	D		
7161 Special services, coded	C an..3	R		DI = Discount EAB = Early payment allowance FC = Freight charge FI = Finance charge IS = Invoice services PAD = Promotional allowance PC = Packing RAA = Rebate RAD = Returnable container SER = Service charge TD = Trade discount VAB = Volume discount VEJ = Environmental protection or clean-up service X14 = Preferential merchandising location service SIA = SIAE charge SSV = experimental glass station contribution COB = COBAT and lead charge recovery COU = Partial recovery I.C.

1131 Code list qualifier	C an..3	O	and C.O.U.
3055 Code list responsible agency, coded	C an..3	D	Insert the code"9" = EAN (International European Article Numbering Association) only when in the DE 7161 is used one of the following codes: SER, VEJ, X14
7160 Special services	C an..35	O	
7160 Special services	C an..35	O	
Segment Note:			

SG51 - C		15 - ALC-MOA		
MOA - C		2- MONETARY AMOUNT		
Function :		To specify monetary amount.		
Segment no. : 46				
	EDIFACT	EAN	IND	Description
C516 MONETARY AMOUNT	M	M		8 = Allowance or charge amount 13 = Amount subject to total monetary discount (to be used together with the value "N" in DE 5463 of the previous segment ALC)
5025 Monetary amount type qualifier	M an..3	M		
5004 Monetary amount	C n..18	R		
6345 Currency, coded	C an..3	N		
6343 Currency qualifier	C an..3	N		
4405 Status, coded	C an..3	N		
<u>Segment Note:</u>				

UNT - M		1 - MESSAGE TRAILER		
Function :		To end and check the completeness of a message.		
Segment no. : 47				
	EDIFACT	EAN	IND	Description
0074 Number of segments in the message	M n..6	M		The total number of segments in the message is detailed here
0062 Message reference number	M an..14	M		The message reference number detailed here should be equal to the one specified in the UNH segment
Segment Note:				