

# THE INFLUENCE OF LIBRARIES

## ON RESEARCH AND INSTITUTION REPUTATION



HERE ARE 5 WAYS HOW LIBRARIES TODAY MAKE A DIFFERENCE TO THE COMMUNITY THEY SERVE.

### 1 PROVIDING GREATER ACCESS TO RESOURCES THAN BEFORE

In 2016, over 300 million e-journal article downloads were recorded on Wiley Online Library. This figure has grown by over 80 million from 2012 to 2016 as libraries continue to provide patrons and the research community greater access to the global knowledge economy.

#### WILEY ONLINE LIBRARY RECORDS IN 2016



### 2 KEEPING PRIORITIES CURRENT AND READY FOR THE FUTURE

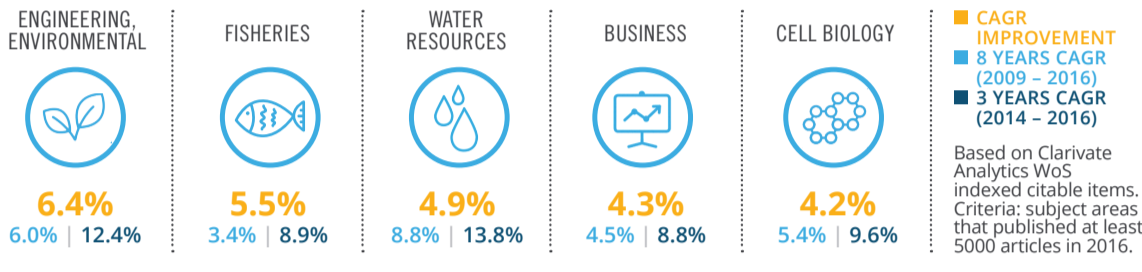
High growth areas change and reflect current issues. Therefore, the library reviews its collection development strategies extensively to ensure that the resources it provides matches research strengths and needs of its institutions. This supports faculties to achieve research goals, and ultimately, drive positive change to its local and global community.

“Convenient access to high-quality research content remains a key foundation for good research.”<sup>1</sup>

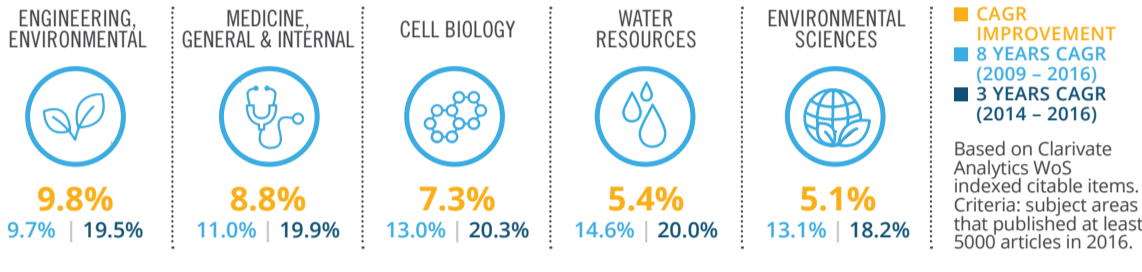


#### TOP 5 SUBJECT AREAS WITH THE GREATEST COMPOUND ANNUAL GROWTH RATE (CAGR) IMPROVEMENT IN 2016

##### GLOBAL PUBLICATION GROWTH RATES: TOP 5 SUBJECT AREAS 2016



##### APAC PUBLICATION GROWTH RATES: TOP 5 SUBJECT AREAS 2016



### 3 INFLUENCING INSTITUTION'S REPUTATION & PRESTIGE

Through the services and collections the library provides, it increases research efficiency, retains and recruits faculty, indirectly contributing to the overall reputation and prestige of its institution, often measured by renowned university ranking reports.

#### HOW RESEARCH IS SCORED IN UNIVERSITY RANKING REPORTS

University Ranking Reports	Weightage of Research in Methodology
<b>THE WORLD UNIVERSITY RANKINGS</b>	Ranks institutions based on 13 indicators that are grouped into 5 areas. <b>Research is measured in 2 areas:</b> 1) Research volume, income and reputation (30%) 2) Citations (20%) <sup>2</sup>
<b>QS WORLD UNIVERSITY RANKINGS</b>	Ranks institutions based on 6 indicators. <b>Research is measured in 2 areas:</b> 1) Research (40%) 2) Citations per Faculty (20%) <sup>3</sup>
<b>CWUR</b>	Ranks institutions based on 8 indicators. <b>Research is measured in 4 areas:</b> 1) Publications (5%) 2) Influence (5%) 3) Citations (5%) 4) Broad Impact (5%) <sup>4</sup>

Table: Weightage of research in various university ranking reports

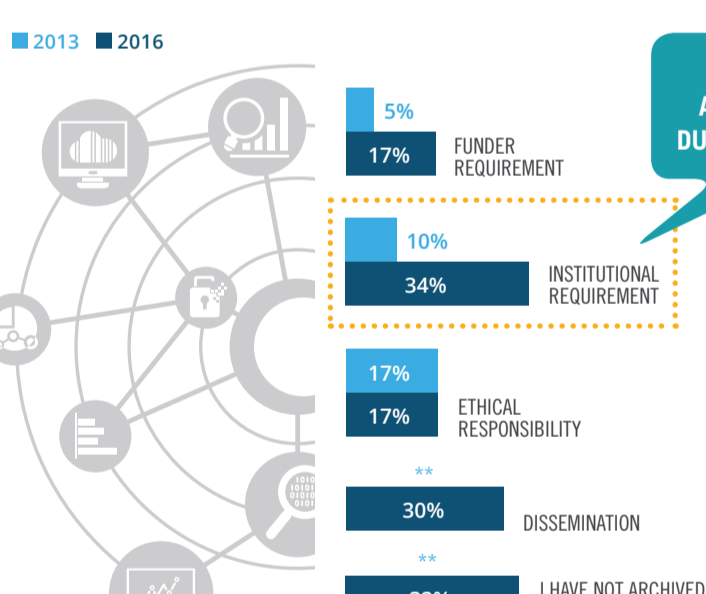


“Libraries to augment their institution's reputation and prestige. One way is to help recruit and retain faculty by building collections that support faculty activities.”<sup>5</sup>

### 4 DELIVERING NEW SERVICES: RESEARCH AND DATA ARCHIVING

With the move towards Open Science, institutions and funders are becoming increasingly interested in tracking and archiving research output, and some of them has made it mandatory for researchers to archive their work.

#### WHY RESEARCHERS DEPOSIT ARTICLES



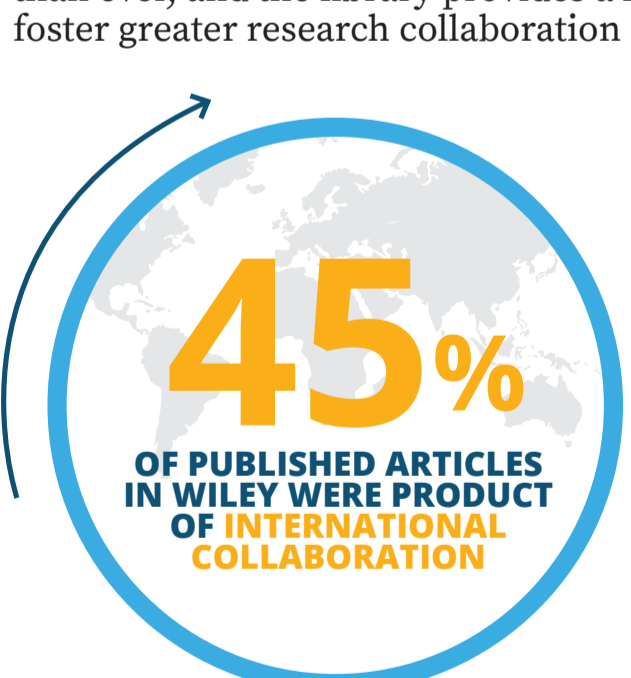
GRAPH: 34% OF SURVEYED WILEY AUTHORS ARCHIVE THEIR RESEARCH DUE TO INSTITUTIONAL REQUIREMENTS<sup>6</sup>

Libraries, progressing with the need for such openness, have the expertise in collating and organizing information and have begun to provide a range of new services, such as repository development and management.

\*Values less than 1% not displayed. \*\*Response choice was added in 2016. \*\*\*Respondents were able to select multiple options.

### 5 BEING A KEY PARTNER IN SPREADING GREAT RESEARCH

To solve global challenges, Science has become more collaborative than ever, and the library provides a key link to bridge gaps and foster greater research collaboration for societal good.



“Librarians are key partners in spreading the results of great research”  
- Sarah Phibbs  
VP Society Services, Wiley

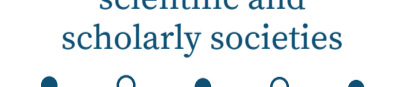
In partnership with publishers, the library connects researchers to, reputable and prestigious societies, and the research they produce.

#### DID YOU KNOW THAT BY PARTNERING WITH WILEY...

Your library and patrons are connected to over

**650**

scientific and scholarly societies



Publish

**57%**

of 1214 Wiley JCR-ranked journals



They represent over

**2 MILLION**

members

**#1 LARGEST SOCIETY PUBLISHER**

Making Wiley the largest society publisher in the world

\*All figures reported based on Wiley data unless stated otherwise.

While it is difficult to articulate the value academic library brings, it is clear that the library plays an important role to both research and teaching. Taking steps to measure and document such efforts will maximise the library's value and help librarians position the library in its institution more clearly.

#### References

- Research Libraries UK and Research Information Network (2011) *The value of libraries for research and researchers*, United Kingdom: Research Information Network.
- Times Higher Education (2017) *World Reputation Rankings 2017: methodology*, Available at: <https://www.timeshighereducation.com/world-university-rankings/world-reputation-rankings-2017-methodology> (Accessed: 2nd July 2017).
- QS World Universities (2017) *Methodology*, Available at: <https://www.topuniversities.com/qs-world-universities-rankings/methodology> (Accessed: 2nd July 2017).
- Center for World University Rankings (2017) *Methodology*, Available at: <http://cwur.org/methodology/world-university-rankings.php> (Accessed: 2nd July 2017).
- Oakleaf, M. (2011) *The Value of Academic Libraries. A Comprehensive Research Review and Report*, Chicago: Association of College and Research Libraries.
- Market Research, Wiley (2016) *Data Sharing Infographic*, figshare. Available at: <https://doi.org/10.6084/m9.figshare.3555993.v1> (Accessed: 13th July 2017).

**WILEY**