

Best instruction booklet ever.

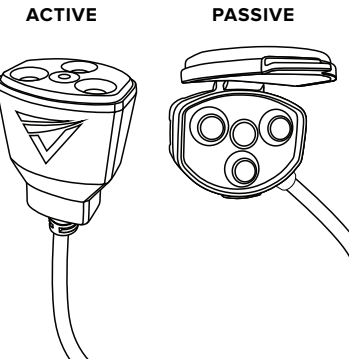
(ok, maybe it's not, but this info is super helpful)

FOR YOUR SAFETY

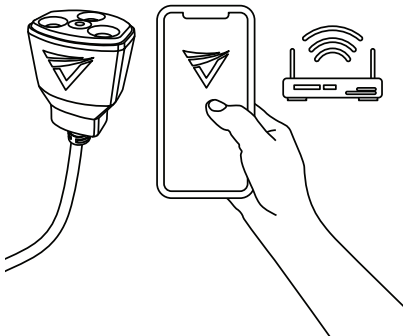
Please ensure your engine block heater does NOT draw more than **840W**.

STEP 1 MOBILE APP INSTALLATION

1 Identify the active side of your plug and the passive side. Make sure they are disconnected.

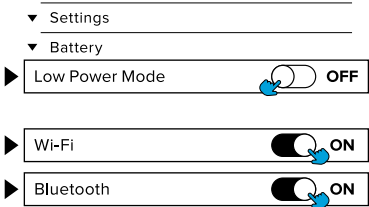


2 Bring the active side and your mobile phone into the same room as your modem/router.



3 Phone Settings

Go into your phone's Settings and turn OFF the Battery Saver just for the setup. Next, confirm the following have been turned ON, Wifi, Location and Bluetooth.



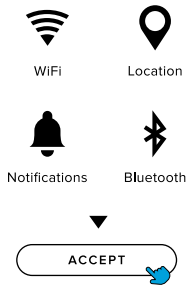
4 Install the VoltSafe app.

If you have an old version of the app on your phone, uninstall the old app on your phone and re-install the new version on your phone. Next, launch the VoltSafe Winter app. Click **GET STARTED**.



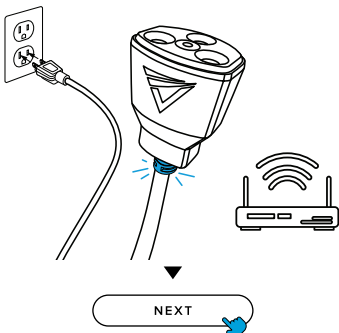
5 Accept all permissions.

On the Welcome page click **NEXT** on the bottom of your screen. Accept all permissions requested by clicking **OKAY** in the pop up and **ACCEPT**.



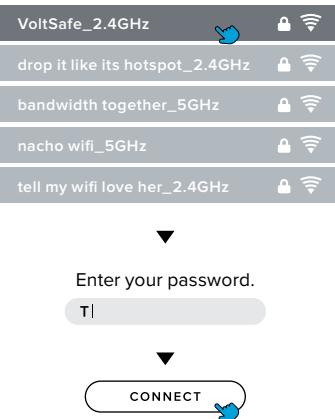
6 Plug the active side in to a wall outlet.

Plug the active side of your VoltSafe Winter to an outlet in an area with good Wifi connectivity (i.e. near your router). The LED light will flash blue. Click **NEXT**.



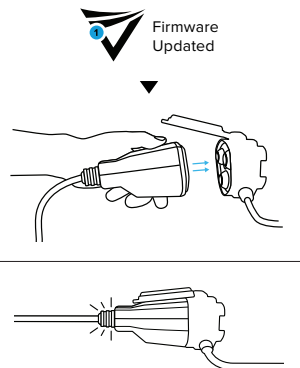
7 Connecting to WiFi.

VoltSafe Winter is ONLY compatible with 2.4GHz networks. Locate your 2.4GHz from the list. Enter your password. Click **CONNECT**.



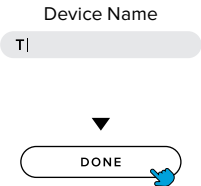
8 Connect the active side and the passive side after firmware update.

Connect the active and passive sides of your plug. The LED light will go from blinking blue to a solid white (it may take up to 2 minutes). Click **NEXT**.



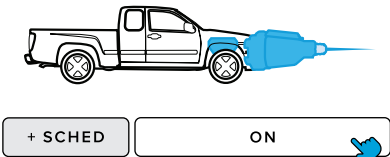
9 Name your device.

Once you've named your device, please read the **safety instructions**.



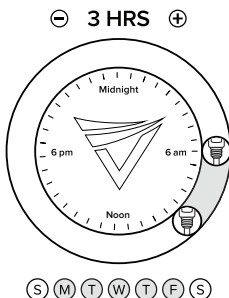
10 Manual ON/OFF button.

Your set up is complete. The ON button indicates your plug is on and you have power flowing. To turn it off, click the **ON** button and it will change to **OFF** and the white LED light on your plug will turn off.



11 Scheduling.

If you would like to set up a schedule, just hit the **+SCHED** button and set your schedule.

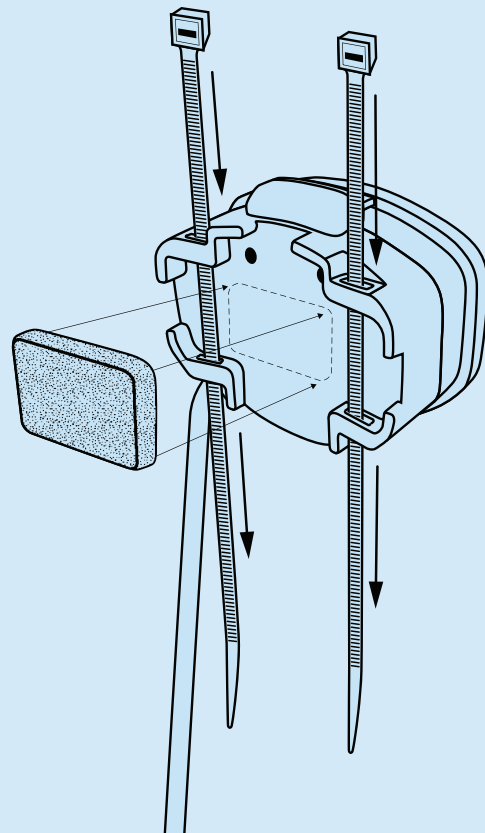


STEP 2

INSTALLING THE PLUG TO YOUR VEHICLE

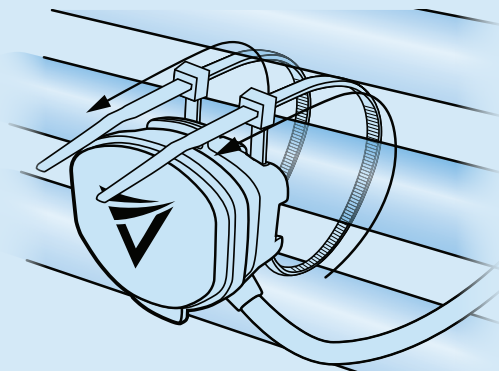
12 Prepare the passive plug.

Attach the adhesive side fo the provided foam pad to the back of the passive plug. Slide the two zip ties through the slots as shown in the diagram below.



13 Mount the passive plug.

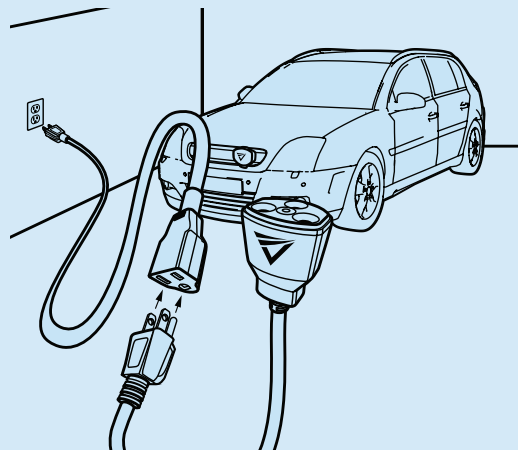
Mount your passive plug end to your grille using the zip ties to wrap around the grille bars. Feed the female end of the plug through your grille and connect it to your existing block heater cord.



Installation may vary from vehicle to vehicle. If you require assistance, please check our FAQs or contact us at support@voltsafe.com

14 Connect the active plug to an outlet.

Connect the active plug to an outlet that is accessible to your vehicle. Use an extension cord if necessary.

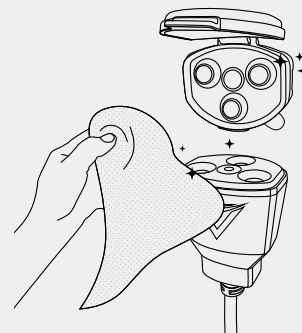


STEP 3

OPERATING INSTRUCTIONS

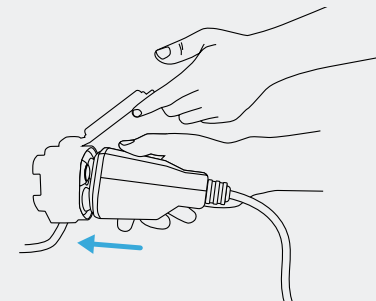
15 Clean the contacts.

Ensure that the metal contacts on the active and passive side are clean and free of debris.



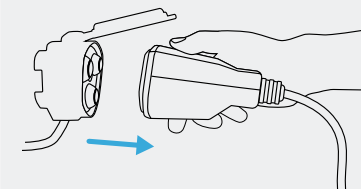
16 Connecting.

Lift up the soft plastic cover on the passive side and connect the active side to the exposed contacts.



17 Disconnecting.

When disconnecting, be sure to securely grip the active side and firmly pull it away from the passive face.



The grommet light will immediately turn off and be safe to touch. If for any reason the grommet light remains on, immediately disconnect the prong side from the wall outlet and contact us.

18 LED indicator modes.



NO LIGHT:
OFF
(POWER NOT FLOWING)



SOLID WHITE LIGHT:
ON
(POWER FLOWING)



SLOW BLINKING
BLUE LIGHT:
**BLUETOOTH
DISCOVERABLE**



FAST BLINKING
BLUE LIGHT:
**BLUETOOTH
CONNECTION
ESTABLISHED**

User Safety

Basic safety precautions should always be followed when using electrical products, including the following:



FOR YOUR SAFETY:
Please ensure your engine block heater does NOT draw more than 840W.



1. Ensure the electrical contacts are clean and free of debris before connecting.



2. Do not submerge either side of the plug in water or any other liquids.



3. Do not use the plug for any other purpose other than its intended use.



4. If the white indicator light is on when both sides of the plug are not connected, please unplug the unit from power source immediately.



5. This product is not intended to be used by children. Close supervision is necessary when any electrical product is used by or near children.



6. Do not operate any electrical product with a damaged cord or plug or after the product malfunctions or has been damaged in any manner. Return product to the nearest authorized dealer for examination, repair or adjustment.

7. The use of electrical attachments not recommended by the manufacturer may result in fire, electric shock or injury.

8. Do not let the cord or plug touch hot surfaces. Do not place on or near a heating element or hot automotive parts.

9. Do not rub or clean metal contacts with other metal material or scouring pads as it could affect magnet and or electrical contacts, creating a risk of malfunction and electric shock.

10. Ensure there is nothing in between male and female surfaces before connecting them, and do not attempt to insert anything between the male and female sides when they are in contact and power is flowing.

11. The VoltSafe Winter block heater plug is a smart plug and has computerized elements inside the plug. Despite its durability, place plug down gently when not in use. It is not intended to be dropped at heights above 4 feet.

Limited Warranty

VoltSafe Inc. warrants this product free from defects in material and workmanship for one year from date of purchase in Canada and continental United States.

Within this warranty period, VoltSafe Inc. will repair or replace, at its option, defective parts at no charge, provided the product is returned with proof of purchase. Before returning an item, please call the toll free number or email support@voltsafe.com to receive a return authorization ID. Allow 2-4 weeks for return shipping.

This warranty does not cover improper installation, misuse, abuse or neglect on the part of the owner. Warranty is also invalid in any case that the product is taken apart or serviced by an unauthorized dealer.

This warranty gives you specific legal rights which may vary from province to province or state to state and does not cover areas outside North America.

VoltSafe Inc.

410-1444 Alberni St, Vancouver BC, V6G-2Z4

1-833-999-6960

support@voltsafe.com

M-F, 9:00 AM - 5:00 PM, Pacific Time



Scan the QR Code to watch this video: How to Mount Your Magnetic Block Heater Cord

