



RESTYLE YOUR HOME

Waterproof
wall and ceiling cladding

 **dumawall+**
WATERPROOF WALL TILES

 **dumapan**
WALL & CEILING PANELS

 **dumalock**
WALL AND CEILING PANELS

 **dumaclick**
WALL AND CEILING PANELS



TABLE OF CONTENTS



4 **dumapan**[®] WALL & CEILING PANELS

Dumapan provides a stylish finishing of walls and ceilings in different designs and styles. These panels are installed with a simple tongue and groove system.



13 **dumaclip**[®] WALL AND CEILING PANELS

With the unique Dumaclip joining system the panels are connected at the top without need for extra connection trims. Cover any length required.



19 **dumalock**[®] WALL AND CEILING PANELS

Dumalock is tiling made easy. Dumalock is changing the rules in tiling, avoiding high installation costs and offering the best of looks.



26 **dumawall+**[®] WATERPROOF WALL TILES

The solid Dumawall+ tiles with carefree fitting and maintenance bring an elegant finish to all interior walls.



30 **decofix**[®] the all-in-one profile

Finish corners and edges with one universal finishing trim with matching colours and designs.



Who are we?

Σ Dumaplast is a leading manufacturer and supplier of PVC wall and ceiling cladding in Europe and beyond. A varied product range is produced across Europe. The head offices are situated in Belgium.

Walls and Ceilings

Σ The Dumapan panels provide an efficient and stylish finish for walls and ceilings throughout the house. The high quality panels are easy to install by both amateurs and professionals alike. Their water resistant qualities make the panels a durable cladding for walls and ceilings, particularly in damp areas such as the bathroom, toilet, kitchen, garage, etc. The printed panels will neither delaminate nor absorb water. Naturally, Dumapan panelling can also be used elsewhere in the house.

Σ Our panels do not generate toxic emissions or scents and have a higher fire safety rating than wood or other wood fibre products. The uniquely finished Dumaplast panels are resistant to colour change or fading.

All advantages: a Checklist...

- Easy and fast to install
- Water resistant
- Colour fast
- Washable
- Light
- Minimum of tools required
- Recyclable
- Fire certificate





Plus...

- No further finishing required
- For walls and ceilings (dumapan, dumaclip)
- For use throughout the house
- Easy maintenance
- Hygienic
- Attractive
- Durable
- Professional use



Dumapan

BASIC range

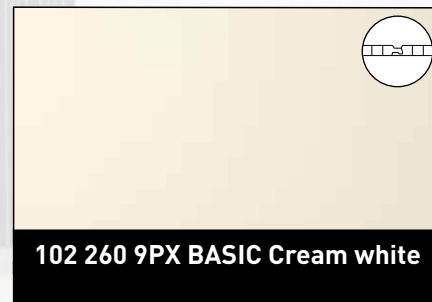
Σ Most panels within the basic range of Dumapan are available in various lengths (2,6 m and 4 m) and widths (10 cm, 25 cm and 37.5 cm). These different measurements make it possible to use the panels for ceilings or high walls. The basic panels are available in matt or high gloss cream white.

Elegant and Durable

Σ Dumapan panels are quick and easy to install with a simple tongue and groove system. Once installed, our panels are hardwearing and durable, needing only an occasional wipe down with soap and water to maintain that new look and feel. In contrast to wood and wood products, Dumapan panels will not warp, crack or delaminate. Most colours are supplied with a V-groove joint. The alternative seamless joints make for a perfect finish for the walls. Dumapan is installed in a similar way to Dumaclip panels. Dumapan panels do not have a connection at the top of the panel like Dumaclip.

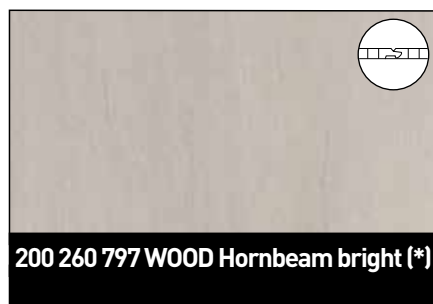


Panel sizes:
10 x 260 cm
10 x 400 cm



25 x 260 cm





25 x 400 cm



37,5 x 260 cm







37,5 x 400 cm



50 x 260 cm



(*) Suitable for wetroom areas. Avoid direct contact with water.



dumaclip[®]

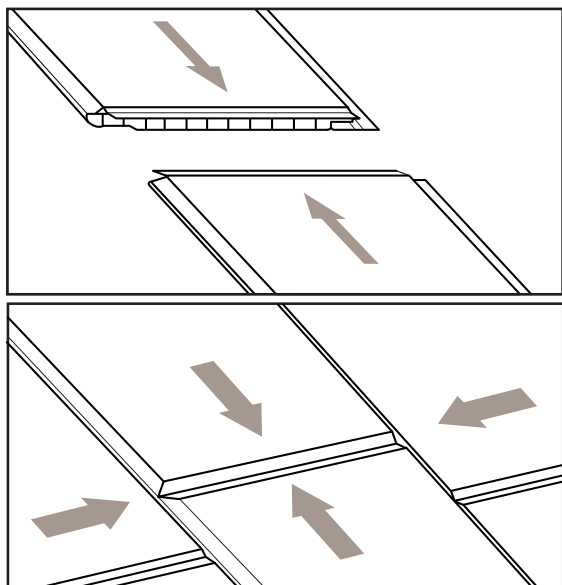
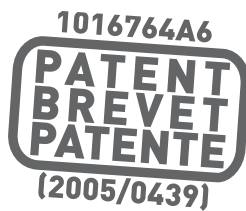
WALL AND CEILING PANELS

Wall and ceiling panelling with an extra touch...

☑ Do you want to change the way your interior looks? In the blink of an eye and without fraying those nerves to breaking point? Then Dumaclip, the latest wall and ceiling system from Dumaplast, is the answer. And you don't need to be a handyman, either!

A Style of Life

☑ Thanks to the unique Dumaclip joining system, you can connect the panels to each other smoothly and without difficulty. The end result looks bright and attractive. Dumaclip is colourfast, waterproof, budget-friendly and only requires a minimum of maintenance. Choose from an extensive range of colours to give any room a fresh new look.



Unique revolutionary joining system

☑ With the patented Dumaclip joining system, a fastening is also provided at the top side of the panels. In this way, it is possible to bridge any length of ceiling or wall. The panels can be inserted on all sides so that you can effortlessly panel the largest of surfaces.

Many advantages

✔ With the unique Dumaclip joining system, you connect the panels at the top side without having to use expensive connection trims. These trims are often hard to install and require a lot of extra work and skill. The end effect of Dumaclip looks a lot more attractive as the joints on all sides are finished in the same way.

CLICK-IT
No extra connection trims



✔ Pvc wall and ceiling panels are usually only available in longer lengths and are therefore hard to transport, with a risk of damage. These problems can be overcome due to the handy Dumaclip box. You can transport it easily in the car and in addition the cardboard box acts as ideal extra protection during transport.

EASY SIZE
Easy to transport



✔ The user-friendly Dumaclip panels are only 120 cm long and extremely light. Installation of the panels is simple and quick. Because of the practical short lengths, you can also install Dumaclip® completely on your own. In this way, you save time and money and you will be able to enjoy your new wall or ceiling a lot more quickly. If required, panels of 260 cm are also available for faster installation.

EASY FIX
Installing in no time



✔ When you come to the end of an assembled row of panels, you simply saw the last panel to length as required. With this sawn-off piece, you can simply begin the new row, and in this way build on and complete the wall or ceiling. Cutting waste is reduced to a minimum and in addition you also save money.

NO WASTE
Minimum waste



✔ Dumaclip panels are made out of PVC, a plastic that is completely waterproof and fully washable. Therefore, maintenance is very simple. All you need to do is clean with a damp cloth and your wall or panel is as good as new. Naturally Dumaclip keeps its original colours, even with intensive maintenance.

RESISTANT
Waterproof, washable and low maintenance



Great looks, but how do I fit it?

✚ Renovating walls and ceilings can be a huge hassle, creating loads of dirt and occupying your space for a long period. With Dumaclip / Dumalock you are able to get a refreshing look in no time. Glue the panels on to your existing wall and ceiling, assemble these with our unique joining system and add your finishing touch with our trims.

Two installation options:



Glue on existing walls

Save yourself some time and glue our panels on to your existing walls. No need to remove the existing ceramic tiles, you will get a fast and amazing result without the dirty work.

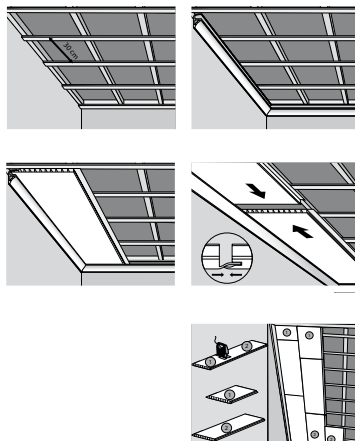


Wooden frame

Build a framework in softwood over your existing wall if you need to cover an old and rough wall. You can build a division wall in a wood frame or even build a full woodframe house. Our panels can then be stapled or nailed right to the framework.

Ceilings

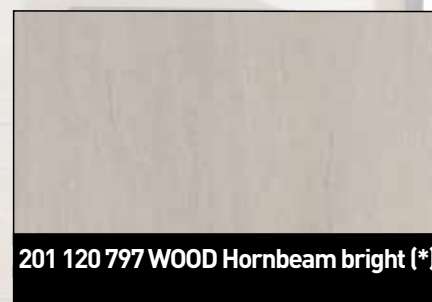
✚ Dumaclip and Dumapan allow you to either install your ceiling on a wooden frame or you can glue it right on an existing ceiling without building a new framework.



Scan the code for installation video:



Panel sizes: 25 x 120 cm



37,5 x 260 cm



16,7 x 120 cm



37,5 x 120 cm

dumacclip[®] XL
WALL AND CEILING PANELS



25 x 260 cm



(*) Suitable for wetroom areas. Avoid direct contact with water.



Simplicity is the Source of Pleasure

Bathe in Luxury

You want to relax at home and enjoy your surroundings. Naturally, you consider your home interior and the atmosphere it creates to be important. Dumalock panels ensure a stylish and durable finish for walls and ceilings throughout your entire home. The water-resistant panels ensure a perfect finish in humid spaces such as bathrooms, toilets, kitchens, garages, etc. The panels will neither delaminate, nor absorb water. And Dumalock can of course be used in any other room in the house.

Comfortable Living

Show who you are and live your own style. You simply choose the panel that suits your taste and home interior. The beautifully finished panels are resistant to discolouration. Moreover, the grooves of the tile effect will not discolour or crumble as real grouting would.

And the ease is not only in the maintenance, but also in the fitting. Once in place, our panels are hard-wearing and durable.



One of a Kind

Tiling is a hassle for most people, however Dumalock is the ideal solution. Dumalock is the first do-it-yourself tile. The patented joining system is completely unique, since the panels are connectable along all sides and the tile grooves have been concealed within the panel. These embossed tile grooves provide a very authentic feel.



	Tiles	Dumalock®
Simple, quick fitting	-	x
Clean work	-	x
Washable	x	x
Colourfast	x	x
Water-resistant	x	x
Budget friendly	-	x
Easy to maintain	x	x
No dirty grooves	-	x
Light material	-	x
Hygienic	-	x
No connection trims	x	x
For walls and ceilings	-	x





Everything to your Advantage

Tiling with grouting is a thing of the past. By simply fitting the panels together, you create a realistic tiling effect thanks to the shallow grooves in the base material without messing around with grouting, adhesive, cutting machines, etc. Simply lay Dumalock on a wooden frame or glue them directly on to the old tiles.

You want to renovate your bathroom or kitchen but have no idea where to start. Maybe you are afraid to ask how much it will cost to remove existing tiles and replace them with new ones. Or you simply can't miss the use of your bathroom for two weeks whilst the renovation takes place. Dumalock has the ideal solution for you. You can easily do the work on your own. Dumalock's user-friendly panels are just 120 cm long and are extremely light, yet retaining their durability for wall covering.

The Dumalock panel can be connected along four sides, even on the cross-cut side. Therefore, you can bridge any length of a wall or ceiling.

Dumalock panels are made from water-resistant synthetics that are fully washable, which makes maintaining the panels incredibly easy. Just wipe them down with a damp cloth and your wall or ceiling will be just like new. Naturally, Dumalock keeps its original colour.

Dumalock is packaged in a handy and sturdy Dumalock box. You can transport it easily in a car and the cardboard box acts as ideal protection during transportation.

CLEAN
No more dirty grouting work | 

EASY FIX
Easy to install | 

LOCK-IT
No extra connection trims | 

RESISTANT
Water-resistant and colourfast | 

EASY SIZE
Easy to install | 

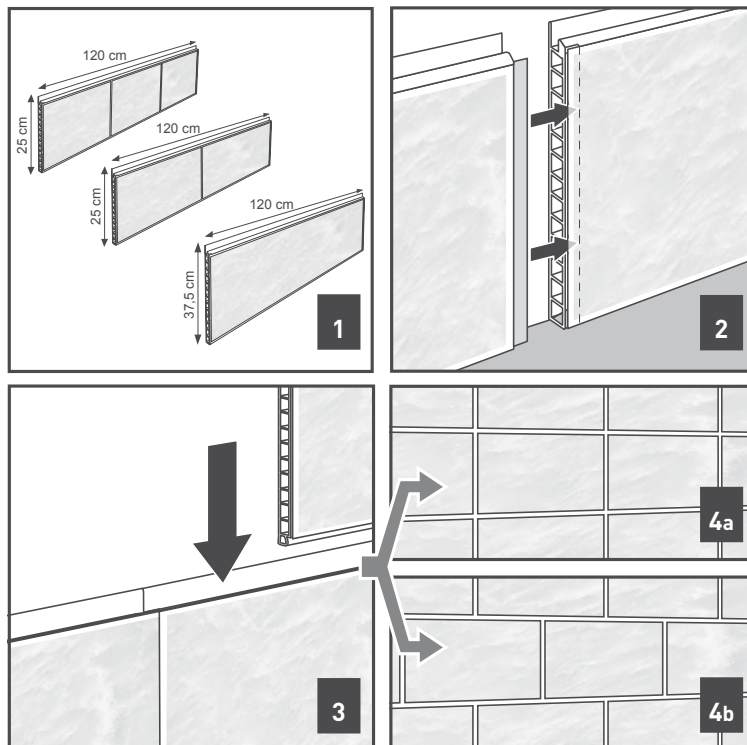




Installation

Building a tile wall has never been this easy thanks to our simple joining system. You can opt to install the tile effect panels parallel (4a) or in correlation (4b). The tiles can be laid horizontally or vertically.

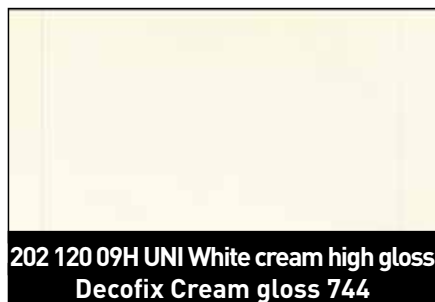
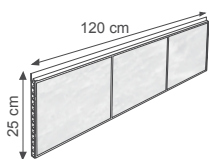
Tiles don't have to be expensive! If necessary, professional fitters can do the job even faster so you have more to spend on other things.



Scan the code for installation video:



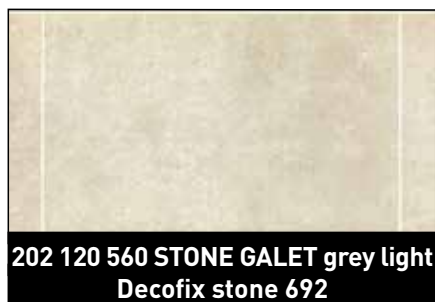
Panel sizes: 25 x 40 cm



202 120 09H UNI White cream high gloss
Decofix Cream gloss 744



202 120 558 STONE GALET beige
Decofix galet beige 667



202 120 560 STONE GALET grey light
Decofix stone 692



202 120 570 STONE GALET brown
Decofix galet brown 668



202 120 572 STONE MONACO beige
Decofix monaco beige 669



202 120 574 STONE MONACO grey
Decofix monaco grey 670



202 120 576 UNI Beige
Decofix uni sand 672



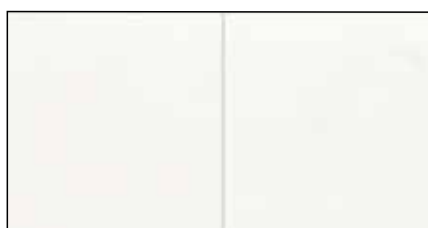
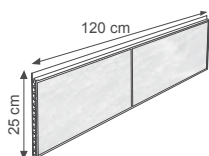
202 120 578 UNI Taupe
Decofix taupe DL 746



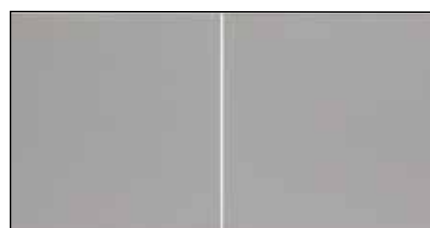
202 120 579 UNI Black matt
Decofix black 650



25 x 60 cm



**204 120 01M UNI White matt
Decofix snow 698**



**204 120 515 UNI Aluminium
Decofix alu 646**

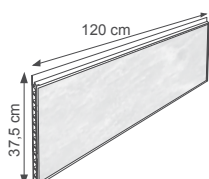


**204 120 630 STONE Concrete light
Decofix stone 648**



**204 120 631 STONE Concrete dark
Decofix stone 649**

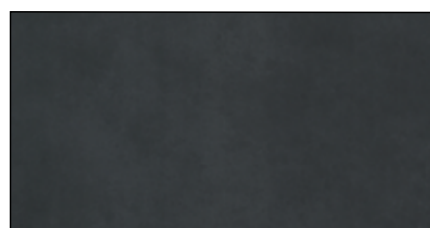
37,5 x 120 cm



372 120 783 STONE Napoli Grigio Grande



372 120 784 STONE Torino light



372 120 785 STONE Torino dark

dumalock[®] XL
WALL AND CEILING PANELS

dumawall+[®]

W A T E R P R O O F W A L L T I L E S

Tiling made easy

Nothing could be more enjoyable than relaxing and unwinding at home on the sofa, especially, when the home interior is perfectly in keeping with your style and tastes. Dumawall+ tiles with carefree fitting and maintenance bring an elegant finish to all interior walls.

DIY tile

Tiling has usually involved a fair degree of difficulty and frustration because cement adhesives and grinders can be tricky to work with. As we are not all handy – the whole house can soon become a giant mess.

Dumawall+ tiles will turn tiling into child's play. The tiles are easily nailed, stapled or pasted onto the walls. If necessary, they can be cut to size with a normal saw and quickly installed.

EASY FIX
With nails or glue



EASY SIZE
Easy to transport





Authentic joint

☑ Once in place, your walls will exude the natural charm of genuine tiled walls. Dumawall+'s authentic built-in grout line can be seen and felt, but you will no longer be troubled with dirty or crumbling grouting.

EASY CONNECT
Tongue and groove installation



Ideal in damp areas

☑ All of our tiles are 100% waterproof and can be fitted in damp bathrooms without any problems and because there is no grouting they are totally hygienic.

H₂O RESISTANT
100% waterproof



☑ A quick wipe-down using a damp cloth will have them shining as new.

CLEAN
No more dirty grouting work



Robust

☑ Dumawall+ Wall Tiles offer high impact resistance, are colour-fast and are made from completely solid, UV-resistant panels. Our tiles bring a stylish and lasting finish, in the manner you have rightly come to expect from Dumaplast.

UV RESISTANT
Colourfast

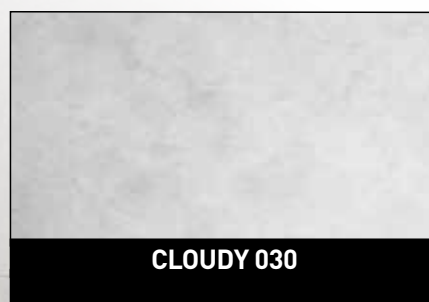


STRONG
Solid board



	Tiles	Dumawall+
Fast and easy fitting	-	X
Neat and tidy	-	X
Washable	X	X
Colourfast	X	X
Waterproof	X	X
Budget-friendly	-	X
Low maintenance	X	X
No dirty grouting	-	X
Light material	-	X
Hygienic	-	X
Warm to the touch	-	X
Easy to cut	-	X
No trims	X	X

**Panel sizes:
37,5 x 65 cm**

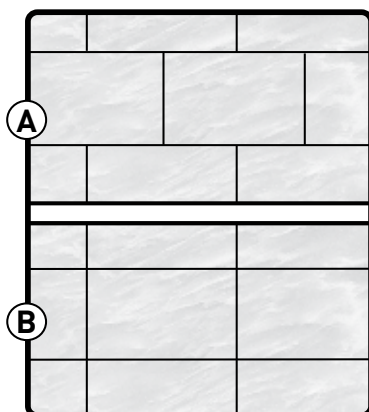
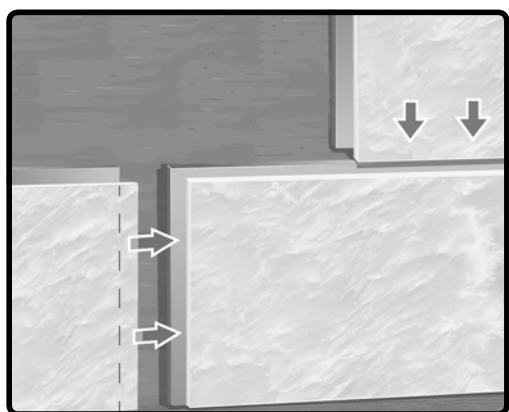


Tiling without the tiler

☑ With an even base a simple (silicon) adhesive may be used and no framework is required. The Dumawall+ tiles may be glued directly onto existing tiling without removing it.

☑ A sturdy support frame must be attached to uneven or damaged bases to ensure an even surface on which the tiles may be installed.

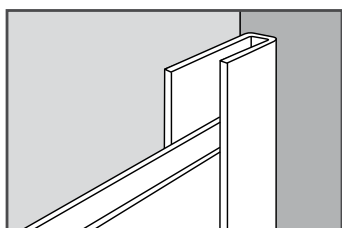
☑ You can opt to install the tile effect in correlation (A) or parallel (B). The tiles can be placed vertically as well as horizontally.



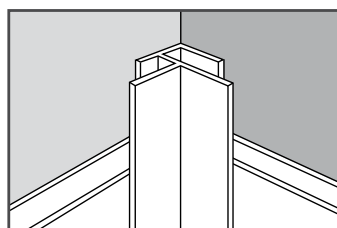
Scan the code for
installation video:



Aluminium accessories



Start and edge trim



Inside and outside corner

Easy with dumafix™



High-quality, fast curing multipurpose adhesive sealant based on MS-polymer. Very high initial tack. Perfect for bonding and fixing Dumaplast pvc-products, like wall and ceiling panels and accessories, on porous and non-porous surfaces. Prior tests are necessary.



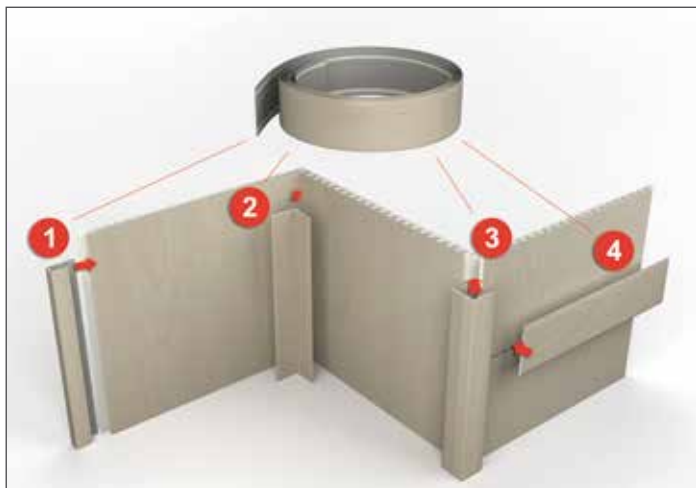
deco1fix

the all-in-one profile

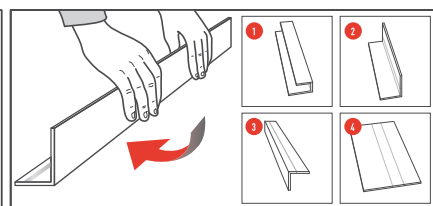
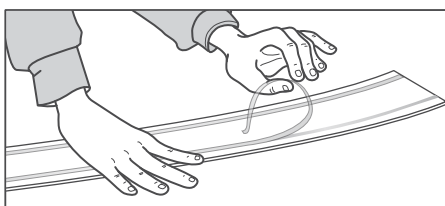
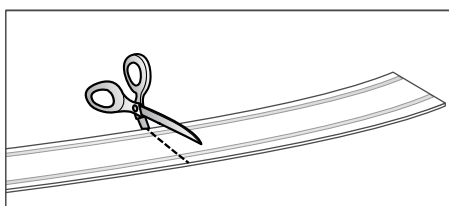
Elegant finish

Decofix trims are ideal for finishing your walls and ceilings in a stylish way. You can use these attractive matching designs and colours for the finishing touch of your panelling.

Decofix finishing trims have the same colour and printed patterns as the panels. Cut the trim to size, remove the protective foil from the adhesive strip and fold the trim as required (1. start trim, 2. inside corner, 3. outside corner, 4. connection trim).



Scan the code for installation video:



Rigid accessories and trims

A large choice of trims enable you to put the finishing touch to your wall or ceiling cladding in a stylish fashion. All trims are available in grey-white and creamwite. Start trims and universal corners are available in unicolours.

1. Start Trim – 069

An end rail makes it possible to fit the panelling flush with the wall or ceiling. The first panel is best fitted into the end rail with a trimmed tongue side.



2. Universal Corner – 858

Inside and outside corners can easily be finished with a universal corner rail, which is fitted before the panelling is applied



3. Decorative Crown Moulding – 081

These special ceiling rails are used for finishing the ceilings after the panelling has been fitted and before the ceiling covering is applied.



4. Skirting – 066

Practical and attractive skirting boards conceal wiring and guarantee a perfect finish with the floor or wainscots.



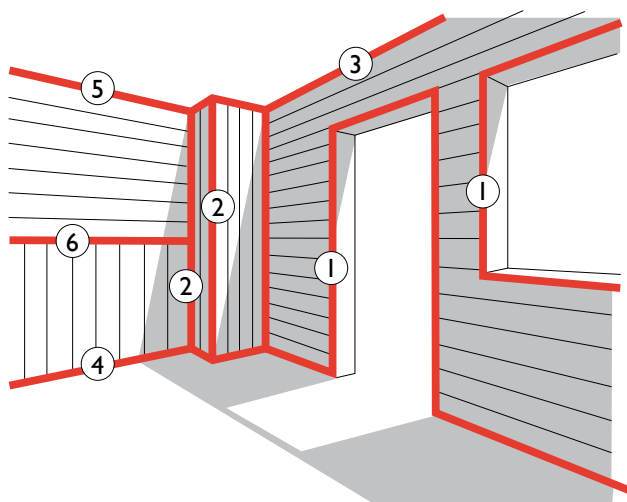
5. Multifunctional Trim – 070

A perfect finishing against a wall or ceiling can be obtained with this trim for horizontal and vertical cornering. It can also be used as a start trim.



6. H-Trim – 843

The panelling can be extended lengthwise by means of this special decorative joint.





dumaplast[®]
EXTRUDED PRODUCTS



Dumapan / Dumaclip / Dumalock / Dumawall+ / Decofix products of
Dumaplast NV | Vliegplein 41 - B-9990 Maldegem - Belgium | Tel. +32 50 72 90 11 | Fax +32 50 71 72 28
www.dumaplast.be | info@dumaplast.be

Whilst care is taken with information, some specifications may be erroneous or incomplete. All information is supplied in good faith and reflects our current knowledge.
We therefore cannot be held liable for any errors or omissions.