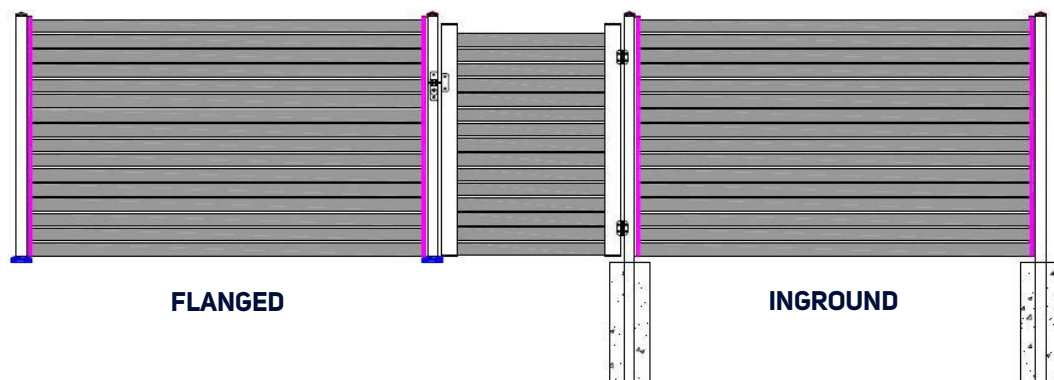
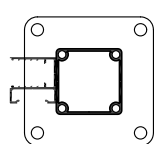
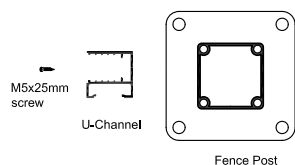


VALLA PANEL & GATE SETUP - 65 & 100MM

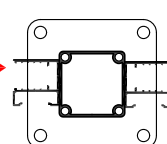
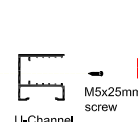
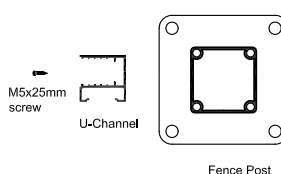


CHOOSE YOUR FENCE POST LAYOUT

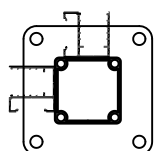
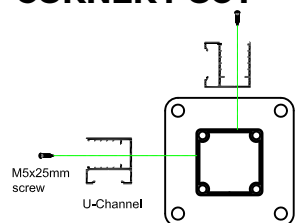
END POST



JOINER POST

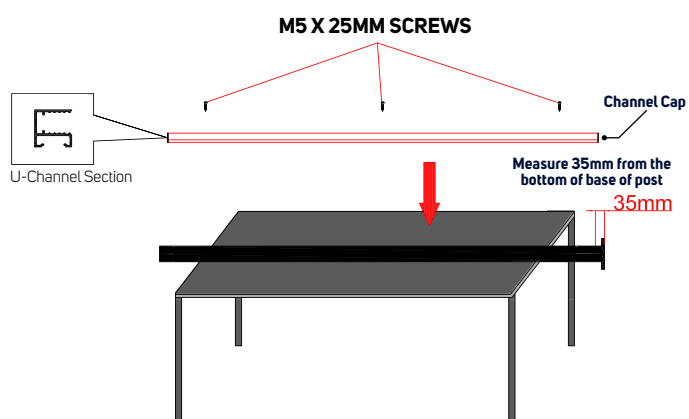


CORNER POST

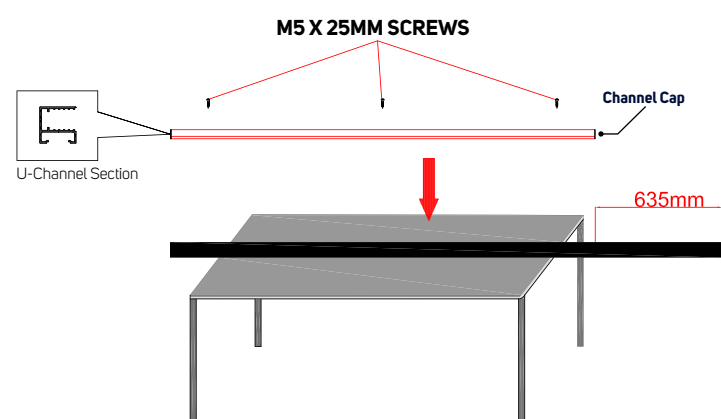


CHANNEL TO POST INSTALLATION

FLANGED POST



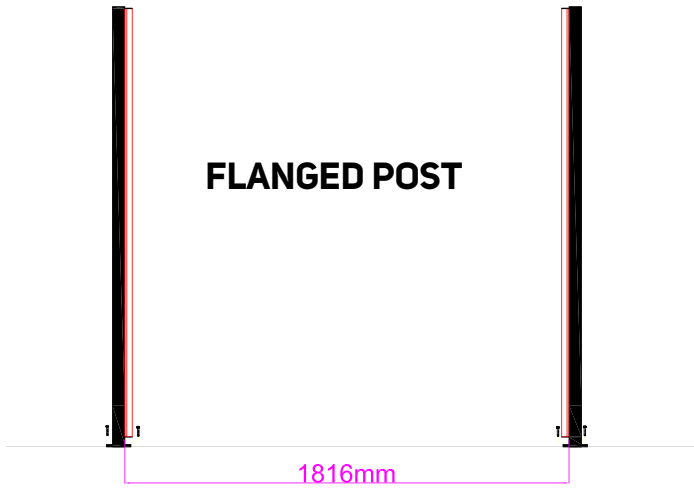
INGROUND POST



1. Place Fence Post on on flat work surface
2. Insert U-Channel cap on bottom of U-Channel.
3. Place channel onto post following diagrams above for your post type.
4. Place the U-Channel cap end/bottom from the required mark then fix U-Channel to post using 3 M5 x 25mm screws starting at the top, centre then bottom.

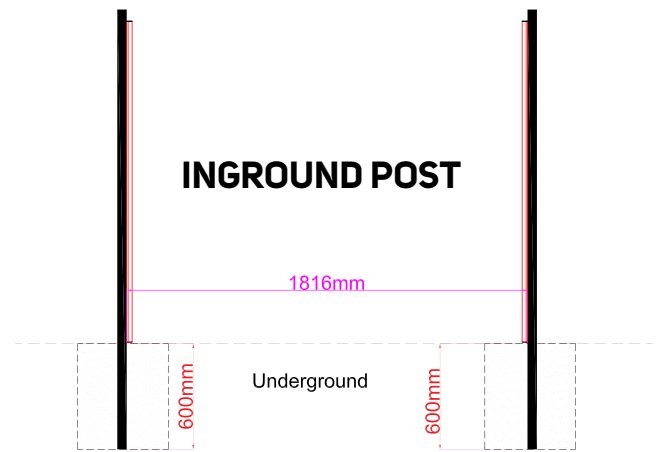
FENCE POST INSTALLATION

FLANGED POST



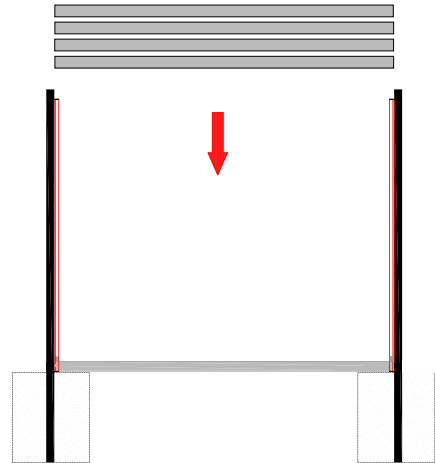
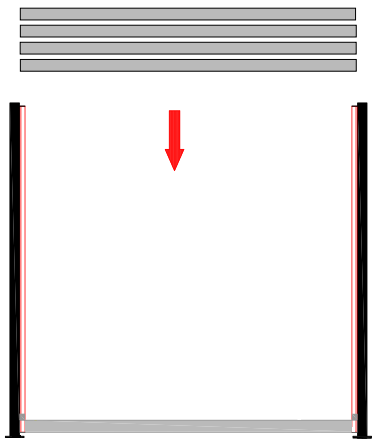
1. Install Flanged Post with suitable fixings to your hard surface.

INGROUND POST



1. Place Inground Posts into 600mm cavity then fill with concrete and leave to dry.

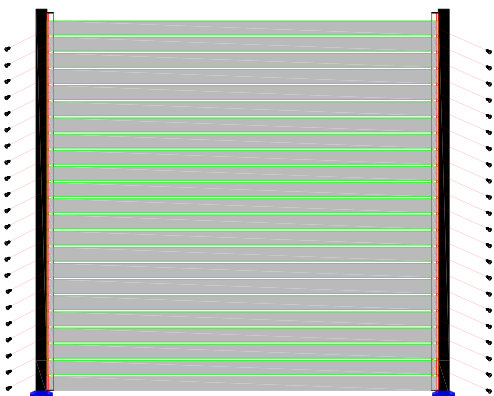
SOLID INSTALLATION



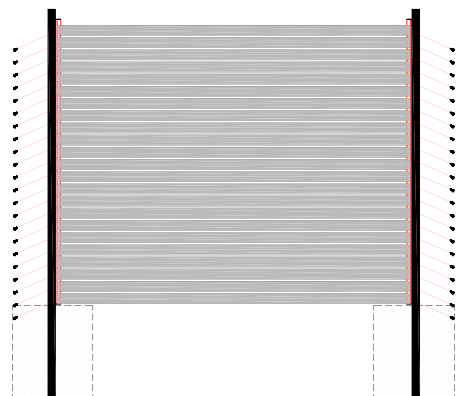
1. Remove 10mm spacers from pack (These aren't required)
2. Insert large spacer at bottom of U-Channel first (This will ensure your panel has a flush top line when fully installed)
 - 65mm Solid Pack, Use 50mm spacer at bottom of U-Channel (Supplied with Spacer Pack)
 - 100mm Solid Pack, Use 40mm spacer at bottom of U-Channel (Supplied with Spacer Pack)
3. Insert slats consecutively into U-Channel until full height is achieved

FIXING SLATS INTO PLACE

FLANGED

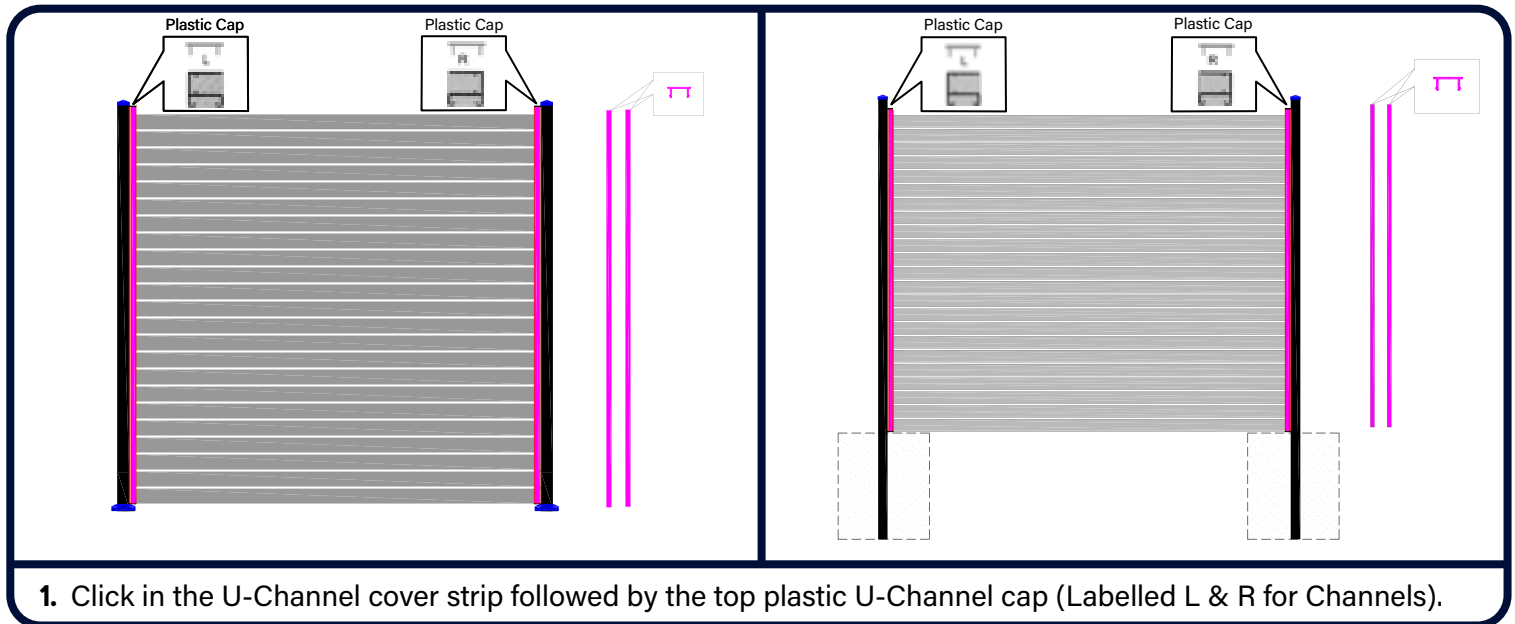


INGROUND



1. Fix slats in place with M4 x 16mm screws along U-Channel.
- TIP 2: Use a level on the top to make sure slats are straight before screwing off.**

INSTALL U-CHANNEL COVER STRIPS



ADDITIONAL PRODUCT INFORMATION

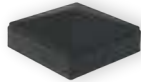
■ ADD BASE PLATE COVER & POST CAPS

(Available in Black or Grey)

1. Install Base Plate covers if applicable



2. Install Post Caps



■ WANT TO SPLIT AS PANEL PACK IN HALF?

- All slat panels packs can be cut to custom width to create smaller sections. All you need is 2x extra U-Channel Packs & 1x Spacer Pack (If making Slat Pack)

■ GATE SELECTION

- A fully assembled gate is available to purchase for every height and style.
All gates are 900mm wide.

■ DAMAGE A SLAT?

- Replacement slats are available to order.

VISIT OUR WEBSITE:

 www.guardianfencing.co.nz

FOLLOW US:

 @guardianfencingnz

EMAIL US:

 sales@guardianfencing.co.nz