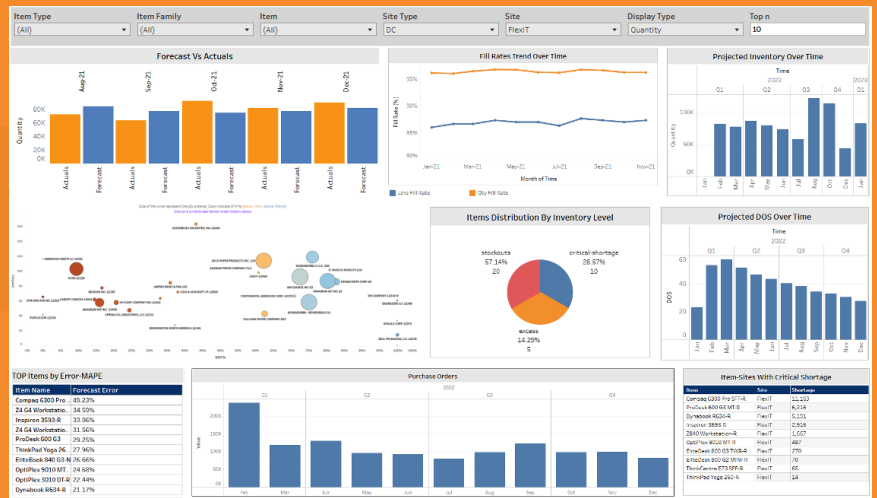


It's Time To Revist Your

DEMAND PLANNING & FORECASTING

Forecasting solution includes many demand sensing, causal factor, and trending algorithms, which are combined and compared with backcasting and 'best fit' logic to generate the best results.

With aggregation/disaggregation, outlier management, and input/consensus workflow from key stakeholders, the solution greatly improves forecast predictability.



Why Change Now?

The need for an evolved and automated demand planning strategy has never been greater. Supply chain volatility is at an unprecedented level globally, forcing companies to react and pivot much more quickly to manage demand. Supply chain responsiveness and resilience depend on maximum visibility and accurate demand planning.

If an organization's demand planning strategy isn't agile, added expense, wasted capital, lost market share and dissatisfied customers will ensue. Organizations can no longer rely on traditional methods to predict demand and need an evolved demand planning strategies and connected decision processes.

Staying ahead of the rapidly changing landscape of supply chain challenges has advanced the need for the most sophisticated solutions.

Turn Your Demand Planning Vision Into Reality

Built on Salesforce and AWS, ketteQ is not only secure and scalable but easily integrates with an organization's existing ERP, CRM, TMS, and legacy systems to deliver connected intelligence across groups, departments, and even external stakeholders.

ketteQ's demand planning and forecasting organize sales opportunities, marketing campaigns, open orders, demand history, and external data sources to improve forecast accuracy and insights.

With ketteQ's demand planning and forecasting the solution, organizations can expect improved forecast accuracy, higher fill rates, lower inventory costs, and increased revenues and profitability.

Utilizing always-on AI / ML analytics, ketteQ delivers the most comprehensive decision-grade data and the tools to amplify forecast accuracy, remove supply chain capacity blind spots and eliminate human error to automate and streamline demand planning workflow.

Features

- Automated AI/ML forecasting
- Forecast error tracking
- Collaborative forecasting
- Demand planning alerts & dashboards
- Demand shaping
- Forecast adjustments
- Opportunity based forecasting
- Demand profiles
- Promotion planning
- New product launch demand planning

Benefits

- Improved Forecast Accuracy
- Higher Fill Rates & Revenue
- Lower Inventory & Obsolescence Costs
- Increased Planner Productivity
- Increased Revenue
- Reduced Inventory
- Better Capacity Utilization

ketteQ has done all the groundwork for you so that you can reap the benefits. Let us show you how you can elevate your existing Supply Chain planning & execution. To learn more about our products and services, visit us at ketteq.com/contact.

GREATER VISIBILITY | OPTIMAL DECISION MAKING