



User Guide

Orbital Shower (OS8732-Ei2, OS8733-E)

5-06-0006

Publication date 2023-10-12

Copyright © 2023,Orbital Systems


All rights reserved. No part of this document may be reproduced or copied in any form or by any means without written permission from Orbital Systems. The English language version of this document contains the original instructions. All other language versions are translations of the original instructions.

Table of Contents

Thank you for your purchase	4
EU Declaration of Conformity	5
Prerequisites and Approvals	6
Service	6
Shower Activation, Wi-Fi Setup and Installation test	7
Operating the Orbital Shower	8
Start and Stop Shower	8
Adjust Temperature	8
Shower Menu	9
Shower Menu Features	9
Switch between Shower Head and Hand shower	10
Pair your device with Orbital Audio	11
Automated Cleaning	12
Maintenance	13
Maintenance Overview & Notifications	14
Change the Filter Capsule	15
Descale	17
Clean the Drain	19
Clean the UV Filter	22
Long Periods of Shower Inactivity	23

Thank you for your purchase

This manual applies to model OS8732-Ei2, OS8733-E

 Read the Safety Guide before starting the installation or before operating the shower.

Thank you for purchasing the Orbital Shower from Orbital Systems. To enjoy the full potential of the shower please read and follow the procedures in this manual. Make sure that you fully understand how to operate this shower and make sure that it is properly maintained in accordance with the instructions given in this manual. Do not discard this manual, keep it handy for future reference. This manual is valid for all shower models. When applicable the manual will only be displaying the Orbital Systems Shower Head & Hand Shower variant.

EU Declaration of Conformity

We Orbital Systems AB,
 Östergatan 22
 211 22 Malmö
 Sweden

Hereby declare that this DoC is issued under our sole responsibility and belongs to the following product:
OS8733-E

This declaration is in conformity with the relevant union harmonized legislations:
RED 2014/53/EU RoHS 2015/863 LVD 2014/35/EU

The following harmonized standards and technical specifications have been applied:

EN 300 328 V2.2.2	EN IEC 61000-6-1:2019	ETSI EN 301 489-1 V2.2.3
EN 60335-1:2012;A11;A13;A1;A14;A2;A15	EN IEC 61000-6-2:2019	ETSI EN 301 489-17 V3.2.4
EN 60335-2-35:2016;A1;A2	EN IEC 61000-6-3:2021	
EN 62233:2008	EN IEC 61000-6-4:2019	

Additional standard that has been applied to product where applicable:

EN 1717	EN 1112	BBR
EN13076	EN 1113	Danish VA Godkendelse
BRL-K14011/01	EN 1253-1	Danish TGA
DVGW W 540	KTW / W270	Säker Vatten
EN 1111	4 MS Material Safety	

The product has undergone mandatory or voluntary certification procedures in order to receive the following certificates:

KIWA 1513	KIWA K100686/02	TGA Nr. TGA.2023/005
DVGW W 540 CERT AS-0605DO0262	RISE C900374	Nemko P23226975
RISE C900373	KIWA 0753	

Signed for and on behalf of Orbital Systems AB



Place	Date	Name	Position
Malmö	2023-09-26	Mehرداد Mahdjoubi	CEO

5-01-0005_B

The manufacture of this product has been made in accordance with the Type-approved decision on production control and the documents submitted to the decision of issue of this certificate.

Prerequisites and Approvals

Orbital Shower is designed and type approved according to the Swedish requirements in Swedish National Board of Housing and Building & Planning regulations (BBR). The system is type approved according to RiSE C900373 & C900374, Kiwa 1513; 0753 and Kiwa safety certificate K100686/02, connection safe W 540 DVGW CERT AS-0605DO0262 and meets ETA Denmark's requirements via technical approval for use according to TGA.2023/005.

Orbital Shower is CE-marked based on certificate and test reports from third party labs.



If industry regulations and instructions in this manual are followed, Orbital Systems guarantees a functional shower system.

Service

Orbital Systems and our team of expert staff are available to assist you if you require product advice, experience any problems, need to purchase spare parts or to set up a service appointment.

Repairs should only be carried out by Orbital Systems.

Contact us

- support@orbital-systems.com
- www.orbital-systems.com
- Europe: +46 (0)40 619 55 50

Shower Activation, Wi-Fi Setup and Installation test

To set up Wi-Fi and do an installation test on your Orbital Shower, please download **My Water by Orbital Systems** from App Store or Google Play and follow the instructions provided in the app.



Internet Connection is required

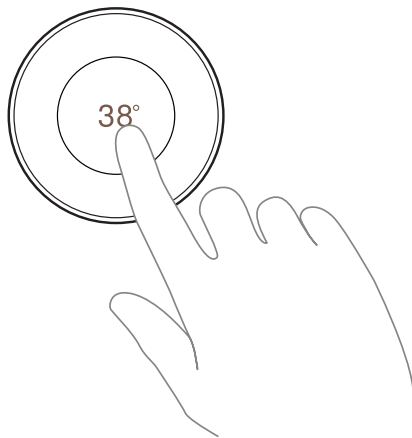
Password protected Wi-Fi 2,4 GHz / 5 GHz or Ethernet.

The installation kit contains components for either Wi-Fi connection OR Ethernet depending on what has been specified in the shower order.

Operating the Orbital Shower

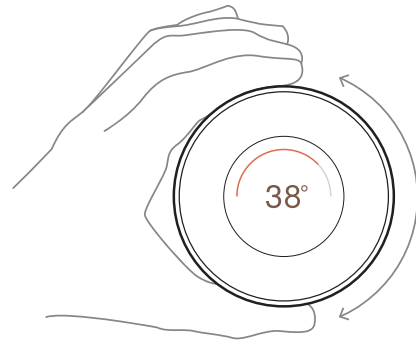
Start and Stop Shower

Tap to start and stop the Shower.



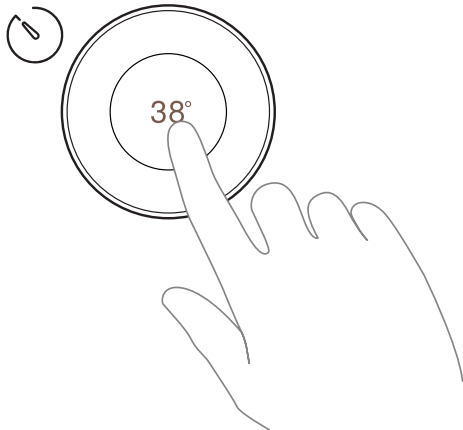
The Orbital Shower performs a short startup sequence to fill up the system and adjust water temperature before water starts pouring out of the shower head. Similarly, after the shower session, it also performs an Express cleaning sequence to empty and prepare the system for the next user.

Adjust Temperature

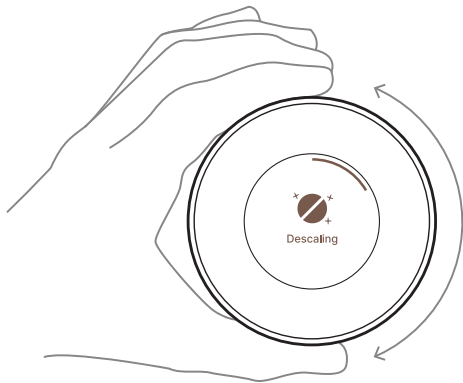


Shower Menu

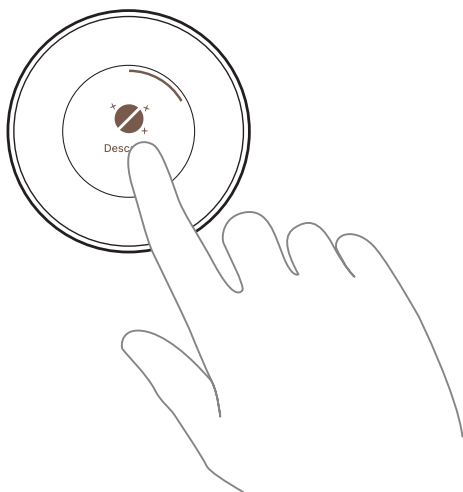
1. Long press to access the shower menu.



2. Turn to navigate.



3. Tap to select feature.



Shower Menu Features

The shower menu will contain a slightly varying set of features depending on which shower profile your shower is set to (for example 'home' or 'business' profile). To read more and manage shower profiles please visit the shower settings in My Water.

Descale

Activates the Descaling procedure. Descaling is part of the regular shower maintenance procedure and should always be run with a Descaling Tablet for optimal effect. This feature can only be accessed while the shower is not running. For more details see Chapter [Descaling \[17\]](#).

Add Wi-Fi

Tap to initiate the shower Wi-Fi setup, then continue the procedure through the My Water app. This feature can only be accessed while the shower is not running.



Shower ID

Displays the shower's unique ID. The shower ID is used for example when you want to add the shower to your My Water account. This feature can only be accessed while the shower is not running.



Asteroids

Take to space and set new high scores while showering. Navigate the space ship safely through an asteroid rain on its way to Mars - just make sure to not get hit!



Adjust Flow

This feature controls the shower flow rate (the incoming water supply sets the limit for the maximum flow rate). Can only be accessed during a shower session. Any flow adjustments made in the shower menu are only valid for that specific shower session. Default flow settings can be managed in My Water.



End Shower

Ends the current shower session and prepares the shower for a new session.



Dark mode / Light mode

The Control Dial has two visual modes; Dark mode and Light mode. This setting can be changed in the Control Dial or in My Water.



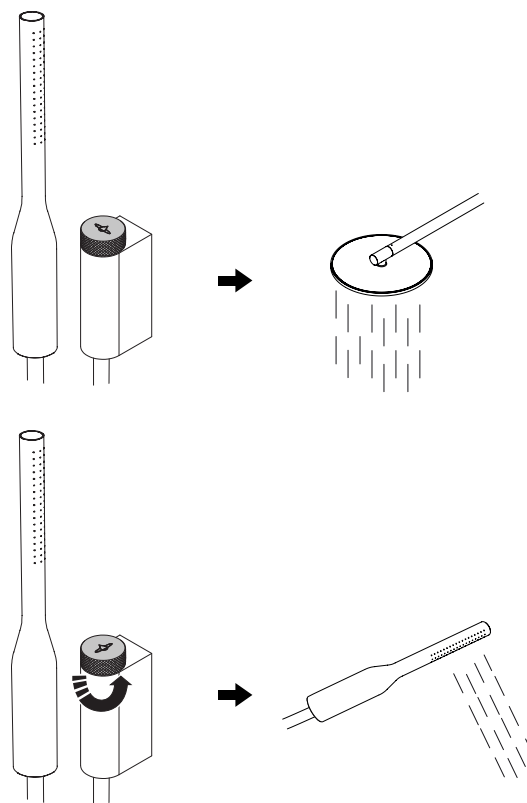
Legacy mode

Activating 'Legacy mode' will cause it to stop recirculating (and thereby also stop saving water). 'Legacy mode' can be activated or deactivated from the shower menu or My Water.

Moon mode

Activating 'Moon mode' will further increase savings, by allowing slight variations in water flow and temperature. 'Moon mode' can be activated or deactivated from the shower menu, or set as default in My Water.

Switch between Shower Head and Hand shower



Pair your device with Orbital Audio

You find the name and PIN to your Orbital Audio on the amplifier. The placement of the amplifier depends on your installation model:

Basic

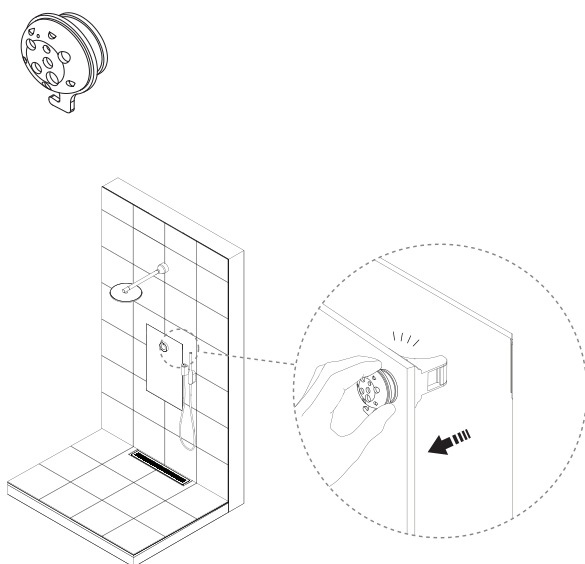
The amplifier is mounted on the wall, next to the shower core.

Panel, Cabinet or Hatch

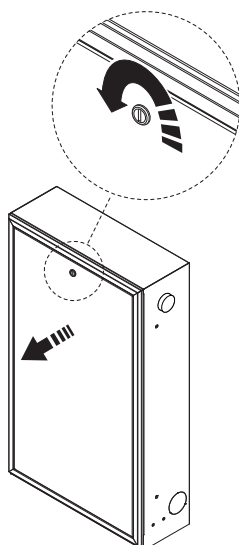
The amplifier is mounted inside the wall box.

Panel: Access the wall box

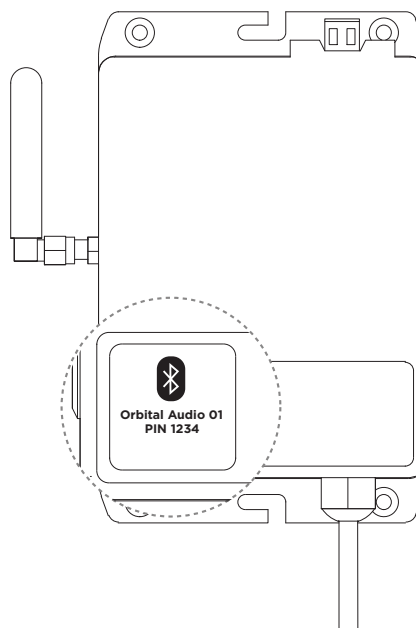
The Magnetic Key is used to open the Panel. It is however only needed if the Panel Lock has been installed and activated.



Cabinet/Hatch: Access the wall box



1. Check the name and PIN on the amplifier.




2. Go to the Bluetooth settings in your device, and select your Orbital Audio in the list.
3. Enter the PIN. This is only needed the first time you pair your device.
4. Play music from your paired device.



NOTE

You can pair up to eight devices to your Orbital Audio. When the number is reached you will need the PIN to pair the next device.

Automated Cleaning

Procedure	Description	Duration
Express cleaning	Automatically cleans the Orbital Shower Core after each shower to prepare for the next session.	~ 3-4 min.
Deep cleaning	Is done automatically once a day at a preset time (can be set in My Water). Deep cleaning lasts longer and cleans more of the Orbital Shower Core than the Express cleaning procedure.	~ 6-7 min.
Shower Head cleaning	<p>  CAUTION While the sequence is active the shower heads will output small bursts of hot water into the shower space. </p> <p> The second phase of Deep cleaning. Cleans the Shower Head or the Hand shower depending on the position of the diverter. Shower Head cleaning is paused if the shower detects presence within 1.5 m. Regularly alternate the diverter's position after shower sessions to clean both the Hand shower and the Shower Head. </p>	~ 8 min.






Maintenance

Follow the cleaning and maintenance instructions in this manual to maximize the shower's lifespan and performance.

The Orbital Shower uses a number of consumable components that will require periodic replacement to ensure optimal performance throughout the product's lifespan. Consumable components are not covered by the warranty. The frequency of consumable replacement depends on a number of factors including usage, water quality, contamination levels and the adherence to regular maintenance and cleaning procedures outlined in this manual. All consumables are included in the Orbital Care Plan. [Contact us](#) when you need to order new consumables. To read more about each specific consumable, see the individual chapter for each maintenance procedure in this manual.

Do not use any corrosive detergents or abrasive cloths during the cleaning and maintenance of the Orbital Shower.

Maintenance Overview & Notifications

Maintenance procedure	When to perform	Estimated time to perform	Consumables needed
 <p>Change the Filter Capsule - See Chapter Change the Filter Capsule [15] for detailed procedure instructions.</p>	Perform when the Maintenance icon is shown on the Control Dial or in My water. (Typically after 100 -150 shower sessions depending on contamination load.)	~15 s	Filter Capsule: Replace when depleted. This consumable is included in the Orbital Care Plan.
 <p>Descale - See Chapter Descale [17] for detailed procedure instructions.</p>	Perform when the Maintenance icon is shown on the Control Dial or in My water. (Typically every 20th shower session.)	~15 s	Descaling Tablet: This consumable is included in the Orbital Care Plan.
 <p>Clean the drain - See Chapter Clean the Drain [19] for detailed procedure instructions.</p>	Perform when notification <i>Clean the drain</i> is shown on the Control Dial or in My water. Water savings are disabled until the drain is cleaned. After cleaning the drain, it may take up to one shower session before the notification disappears.	~3 min	
 <p>Clean the UV Filter - See Chapter Clean the UV Filter [22] for detailed procedure instructions.</p>	Perform when the Maintenance icon is shown on the Control Dial or in My water. (Typically very rare. Frequency varies depending on contamination load and hardness of water.)	~15 s	Descaling Tablet: This consumable is included in the Orbital Care Plan.
 <p>Lost Internet Connection</p>	Indicates that the shower can not connect to internet. Troubleshoot your connection and check your network settings.		

Change the Filter Capsule

- Filter Capsule Model No: **OS C1050085A10**
- Use only Orbital Systems Filter Capsule **OS C1050085A10** in the Shower System
- Spare Part Reference: 1-05-0085 Filter Capsule

Icon shown on Control Dial Screen when Filter Capsule change is needed.



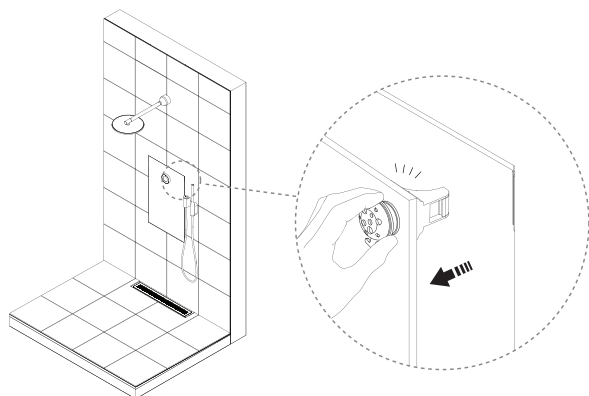
Needed Consumable: Filter Capsule

The Filter Capsule is a consumable and should be changed as soon as prompted by the system. It is essential to maintaining a high standard of water purification and general shower functionality. The consumable is included in the Orbital Care Plan.

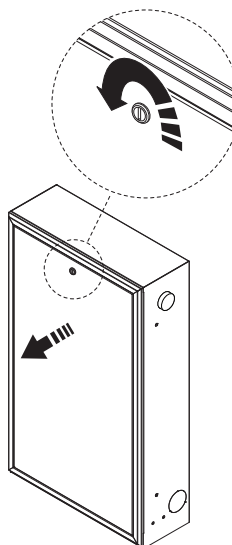


Model Panel: Access Orbital Shower Core

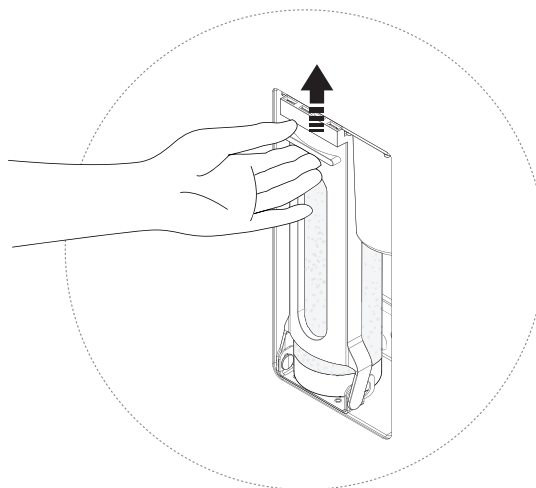
The Magnetic Key is used to open the Panel. It is however only needed if the Panel Lock has been installed and activated.



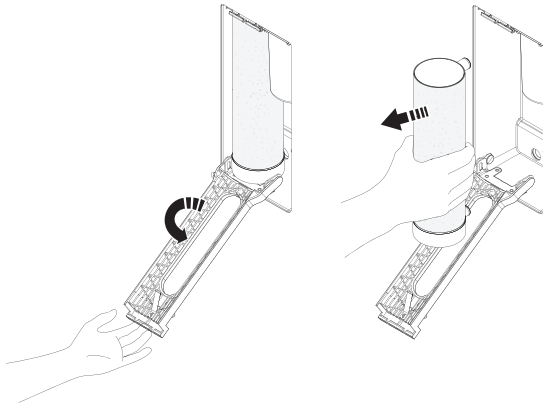
Model Cabinet/Hatch: Access Orbital Shower Core



1.



2.

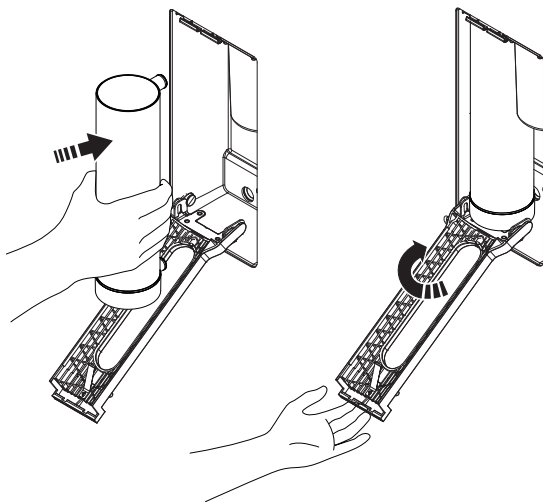


3. Insert new Filter Capsule.

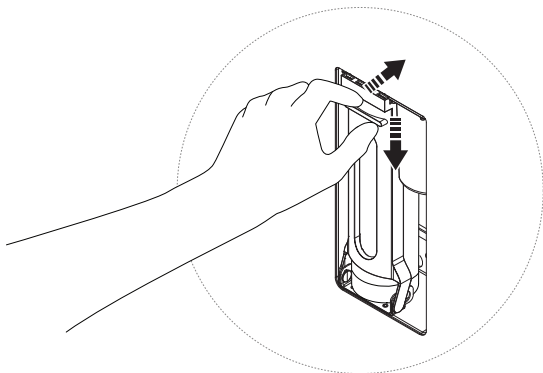


RISK OF LEAKAGE

Make sure Filter Capsule is inserted all the way in or leakage may occur.



4. "Click!"



Descal

Icon shown on Control Dial Screen when Descaling is needed.



Needed consumable: Descaling Tablet



The Descaling Tablet is a consumable and should always be used when running the Descaling procedure. Please exit the shower area while the Descaling procedure is running. The active chemical ingredients in the Descaling Tablets are fully biodegradable and environmentally friendly. The chemicals are food-safe and typically used for descaling coffee machines. Orbital Systems still recommends not to ingest the Descaling Tablets or the water during a Descaling procedure.

The consumable is included in the Orbital Care Plan.

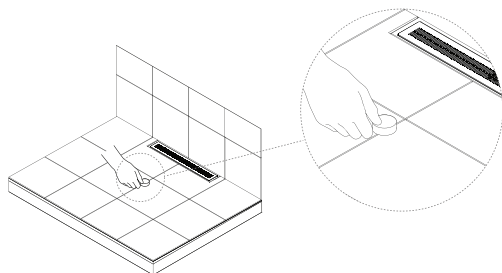
1. Once the Descaling has started water will start to pour out of the shower heads. Turn the Diverter button to a position between the Hand shower and Shower Head so that water pours out of both during the Descaling. Place the Descaling Tablet on the floor, directly in the stream of water so it dissolves.



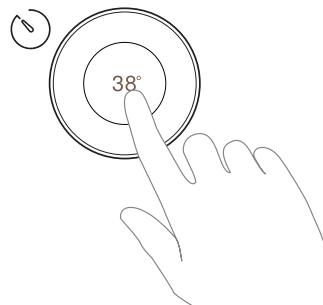
CAUTION

Please exit the shower area while the Descaling is active.

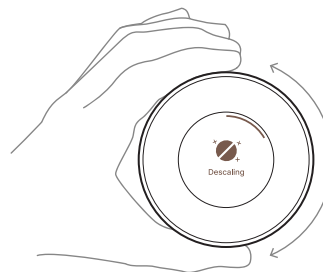
If you do not have an Orbital Diverter installed, set it so water pours out of all shower heads simultaneously throughout the entire Descaling. If it is not possible to run water through the shower heads simultaneously, please run a separate Descaling for each shower head individually.



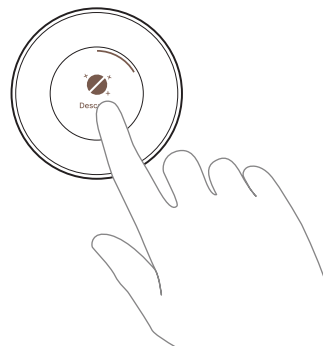
2. Long press to access the shower menu.



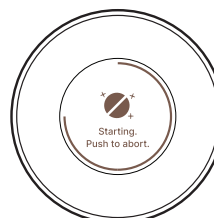
- 3.



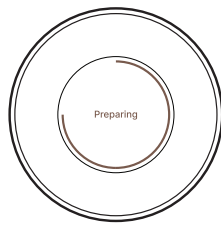
- 4.



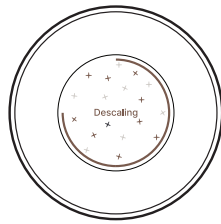
- 5.



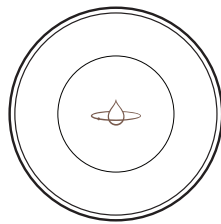
6.



7.



8. Descaling is completed.



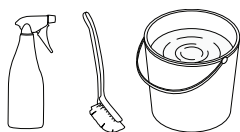
Clean the Drain

Notification *Clean the drain* is shown on Control Dial Screen when cleaning the drain is needed. After cleaning the sensor tank, it may take up to one shower session before the notification disappears.



Needed tools: Cleaning agents

Do not use any corrosive detergents or abrasive pads/cloths as it might damage the Sensor Tank.

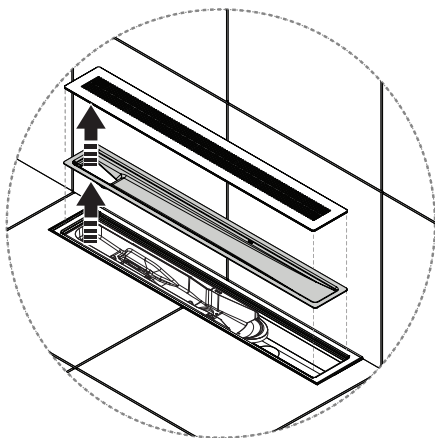


Recirculation Mesh

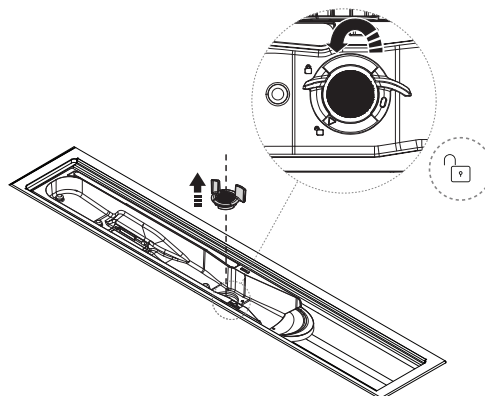
The Recirculation Mesh is not a consumable and should only be replaced if it is damaged or not functioning properly. The Recirculation Mesh is automatically cleaned after each shower session. However, it should also be inspected and cleaned whenever the Sensor Tank is cleaned. Failing to maintain the Recirculation Mesh may lead to clogging which will affect the ability to recirculate water. Please contact Orbital Systems if Recirculation Mesh needs to be replaced.



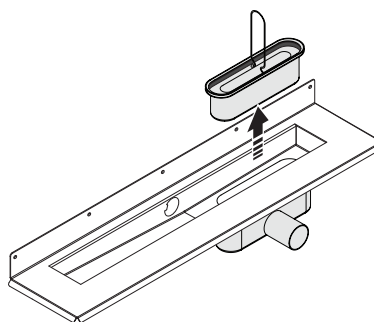
1.



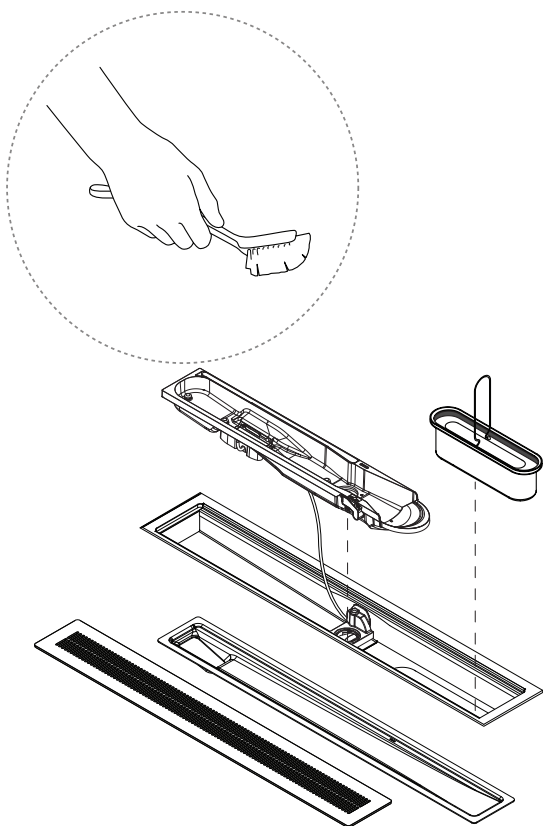
2.



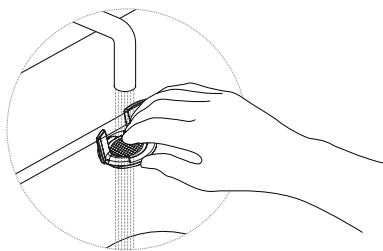
3.



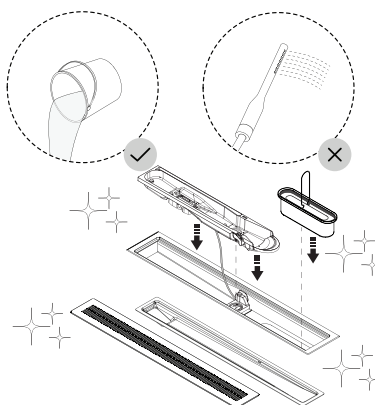
4. Use non-abrasive cleaning agents only. Make sure to clean all surfaces of each component, including the Drain Unit.



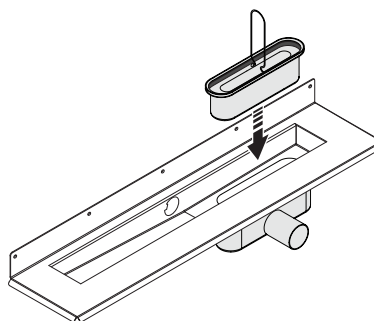
5.



6.



7.

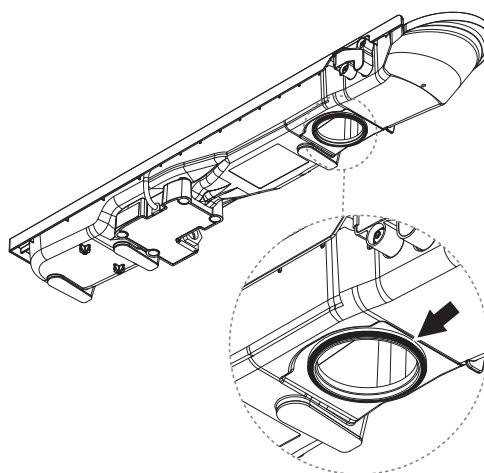


8.

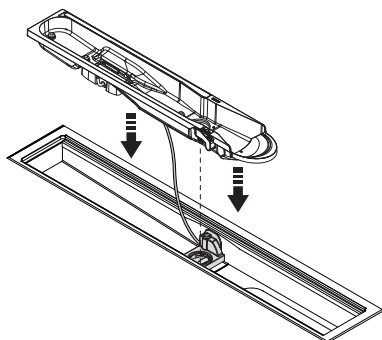


NOTICE

Make sure the O-ring is correctly mounted before reassembly of Sensor Tank.



9. Insert Sensor Tank.



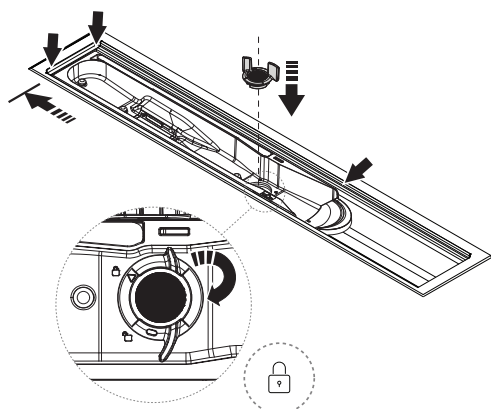
10.



CAUTION

Make sure Sensor Tank is inserted correctly. The edge of the Sensor Tank should be fully pushed towards the edge of the Drain Unit.

Lock the Sensor Tank in position with the Sensor Tank Lock by turning it 90 degrees.

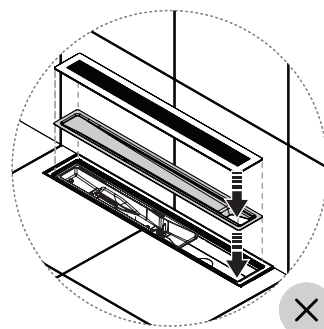
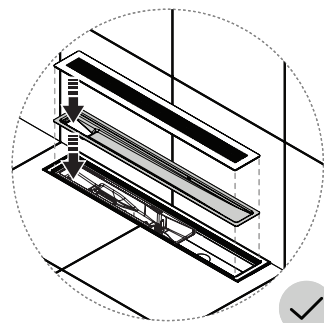


11.



NOTICE

Place the Funnel with the hole oriented to the left! Placing the hole oriented to the right will disable recirculation.



Clean the UV Filter



Icon shown on Control Dial Screen when UV Filter service is needed.

Start with running a Descale to remove any limescale deposits from the UV Filter. For more details see Chapter [Descale \[17\]](#). If the system is still signaling that the UV Filter needs to be cleaned after the Descaling has been completed, please contact Orbital Support.

Long Periods of Shower Inactivity

We recommend that the Orbital Shower always remain connected to electricity and water supply to allow it to continuously run automated cleaning and maintenance procedures.

If the shower has to be disconnected from electricity and/or water for long periods of time (more than a week of inactivity) we recommend running a Descale (see Chapter [Descale \[17\]](#) with two Descaling Tablets, and to replace the existing Filter capsule for a new one (see Chapter [Change the Filter Capsule \[15\]](#)) before disconnecting it.



CAUTION

The Orbital Shower shall never be exposed to freezing temperatures since it will result in imminent risk of damage and leakage.

ORBITAL



CERTIFIED SPACE TECHNOLOGY