



Technology Installation

Orbital Shower Panel R3 (OS8733-E)

5-06-0012

Publication date 2023-09-22

Copyright © 2023,Orbital Systems

All rights reserved. No part of this document may be reproduced or copied in any form or by any means without written permission from Orbital Systems. The English language version of this document contains the original instructions. All other language versions are translations of the original instructions.

Table of Contents

Thank you for your purchase	4
Prerequisites and Approvals	4
Warranty	5
Service	5
System Overview	6
Installation Overview	7
Installation System Requirements	7
Seal mountings in wet zone	8
Install Orbital Shower Unit	9
Install Sensor Hose, Flush Hose and Recirculation Hose	11
Install Sensor Tank Dock	13
Install Sensor Tank and Sensor Tank Lock	15
Install Funnel	17
Install Orbital Shower Core	18
Install Hose Connections	23
Add the Filter Capsule	25
Install Panel	27
Install Control Dial	29
Install Panel Lock	33
Next Step	36
Installing the Shower Head	37
Installing the Hand Shower	40
Installing the Diverter and Hand Shower	40
Installing the Hand Shower Holder	45
Shower Activation, Wi-Fi Setup and Installation test	48

Thank you for your purchase

This manual applies to model OS8733-E

 Read the Safety Guide before starting the installation or before operating the shower.

Thank you for purchasing the Orbital Shower from Orbital Systems. To enjoy the full potential of the shower please read and follow the procedures in this manual. Make sure that you fully understand how to operate this shower and make sure that it is properly maintained in accordance with the instructions given in this manual. Do not discard this manual, keep it handy for future reference. This manual is valid for all shower models. When applicable the manual will only be displaying the Orbital Systems Shower Head & Hand Shower variant.

Prerequisites and Approvals

Orbital Shower is designed and type approved according to the Swedish requirements in Swedish National Board of Housing and Building & Planning regulations (BBR). The system is type approved according to RiSE C900373 & C900374, Kiwa 1513; 0753 and Kiwa safety certificate K100686/02 and DVGW CERT W 540 AS-0605DO0262.

Orbital Shower is CE-marked based on certificate and test reports from third party labs.



If industry regulations and instructions in this manual are followed, Orbital Systems guarantees a functional shower system.

Warranty

For Warranty and Liability for Defects information, please visit Orbital Systems web <https://orbital-systems.se/terms-conditions>.



Service

Orbital Systems and our team of expert staff are available to assist you if you require product advice, experience any problems, need to purchase spare parts or to set up a service appointment.

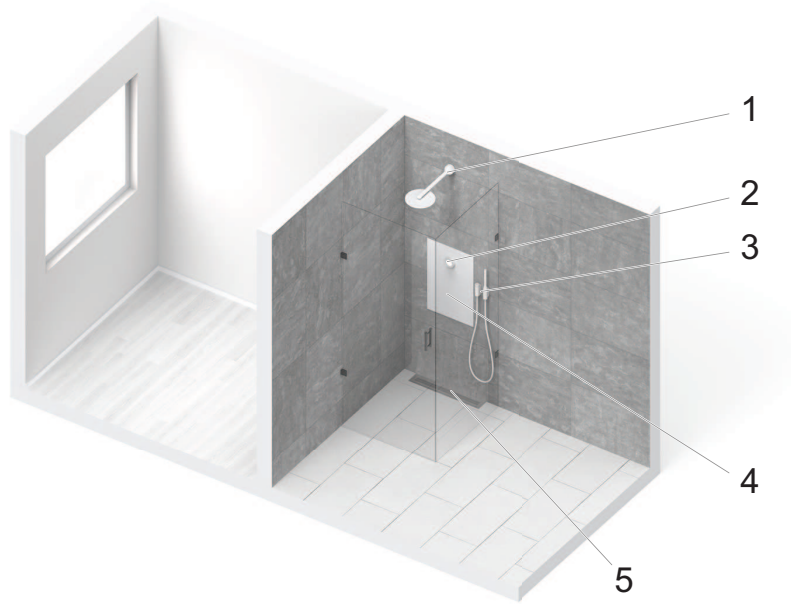
Repairs should only be carried out by Orbital Systems.

Contact us

- support@orbital-systems.com
- www.orbital-systems.com
- Europe: +46 (0)40 619 55 50

System Overview

Orbital Shower Panel R3 (OS8733-E)



1. Shower Head (optional)
2. Control Dial
3. Hand Shower Kit (Hand shower, Diverter and Holder) (optional)
4. Shower Unit (RSK 835 91 20) and Cabinet (RSK 831 41 82)
5. Drain Unit (RSK 711 54 63) and Outlet unit (RSK 711 99 33)

Preparation and installation of shower area (including piping, connections, water proofing and tiling), installation of cabinet (4) and drain (5) are included in the Fixture installation manual.

Installation of the Shower unit (4), Control dial (2), Shower head (1) and Hand shower kit (3) are included in the Technology installation manual. Operation of the shower is included in the User Guide.

Installation Overview

Installation System Requirements

Connectivity

Internet connection: Password protected Wi-Fi 2,4 GHz / 5 GHz or Ethernet.

The installation kit contains components for either Wi-Fi connection OR Ethernet depending on what has been specified in the shower order.

Electrical Supply

Residual circuit breaker: One breaker per Shower Core

Power supply: One Phase, 230VAC / 50 Hz / 16A

Mains supply wire: Min. 2.5 mm² (rated for 16A circuit)

Plumbing / Water

Incoming tap water supply connections: Separate hot and cold, 2x female G 1/2" swivel nut.

Incoming cold water temp. (min-max): 4-25°C

Incoming hot water temp. (min-max): 50-65°C

Maximum working pressure tap water: PN10

Incoming water pressure (min-max): 2-10 bar

The supply pressure is the fundamental requirement for the shower flow:

- 2 bar: 7.5 litres/min
- 3 bar: 9.5 litres/min
- 4 bar: 11 litres/min

Recommended water supply flow: 9 litres/minute per inlet hot and cold

Water hardness (min-max): Required: 3°dH-10°dH

Recommended: 6°dH-10°dH (or a total hardness of 110-180mg CaCO₃/litre)

Water iron content: <0,3mg/litre

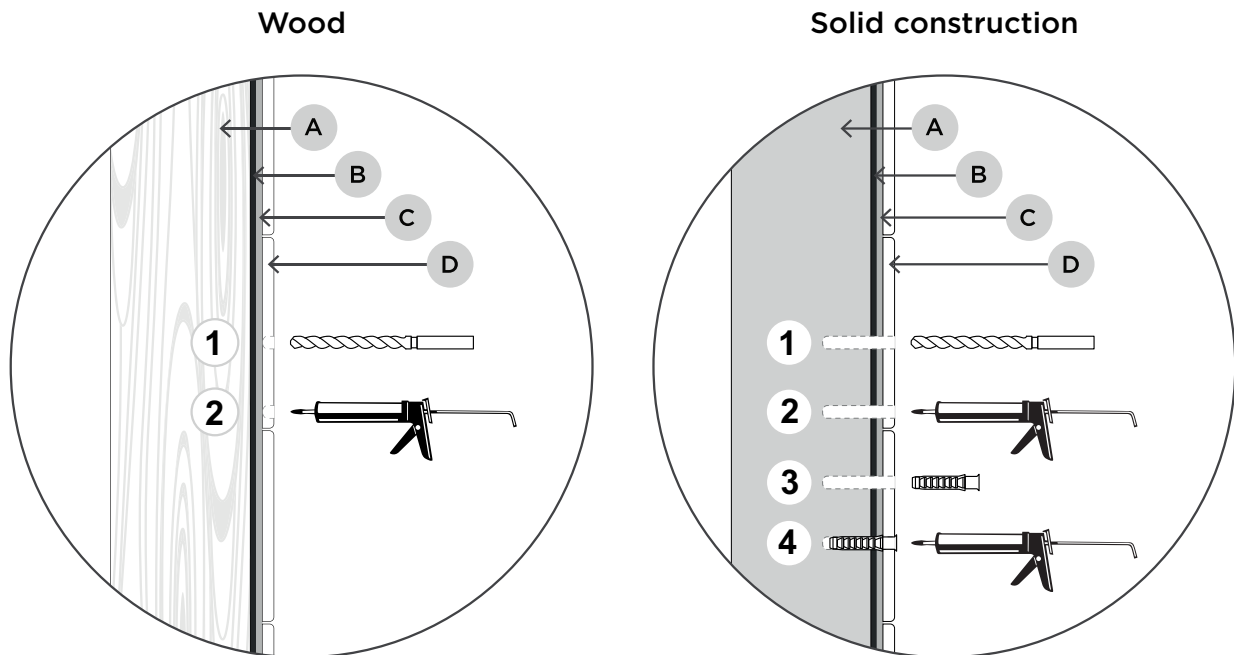
Seal mountings in wet zone



CAUTION

For installation in Sweden according to current Industry Rules Safe Water Installation. All mountings in the wet zone must be sealed against the water-proofing layer of the wall or floor. Material for sealing must adhere to the substrate and be water-resistant, mold-resistant and aging-resistant.

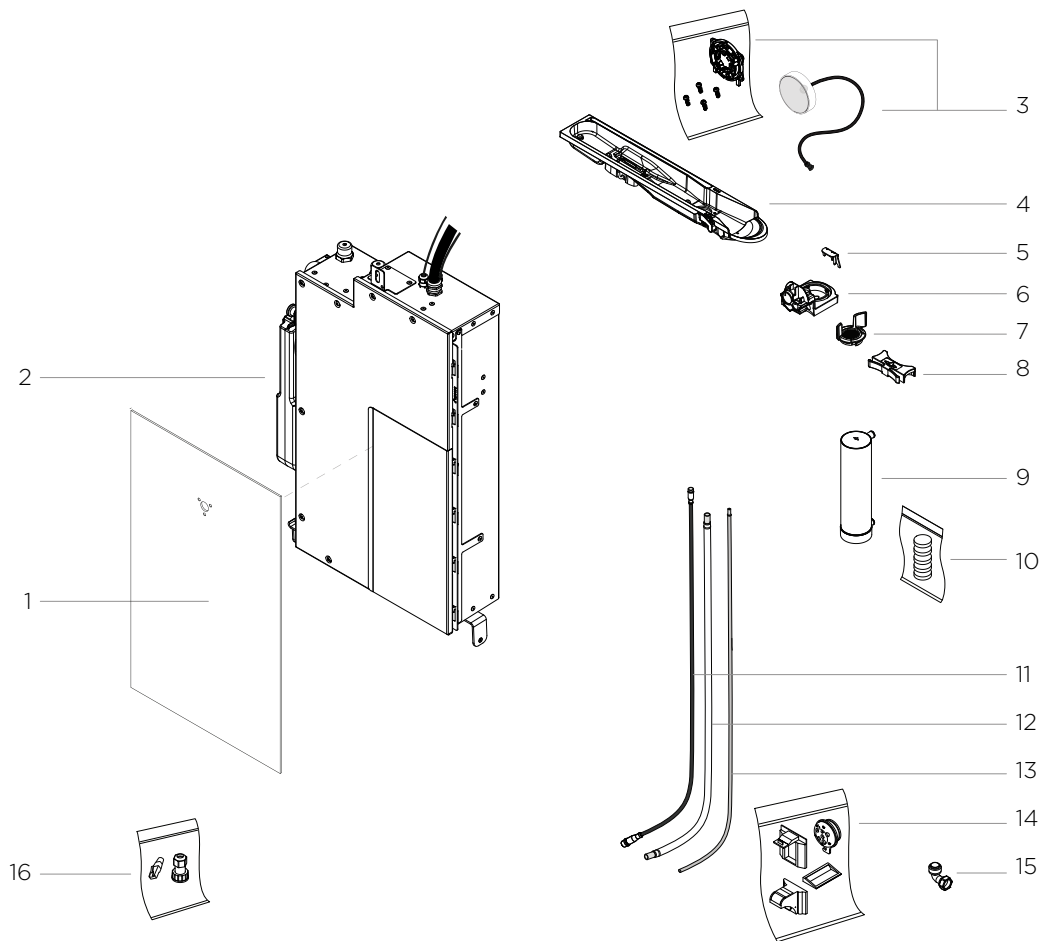
Seal the drill holes according to industry rules.



- **A:** Wood / Concrete
- **B:** Waterproofing membrane
- **C:** Tile adhesive
- **D:** Tile

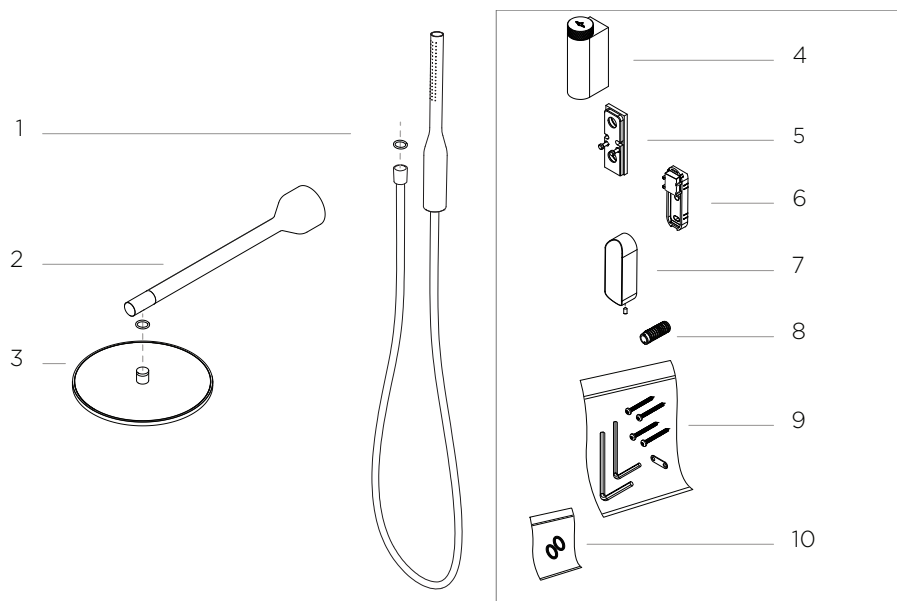
Install Orbital Shower Unit

Component Overview Technology kit Core components and Door



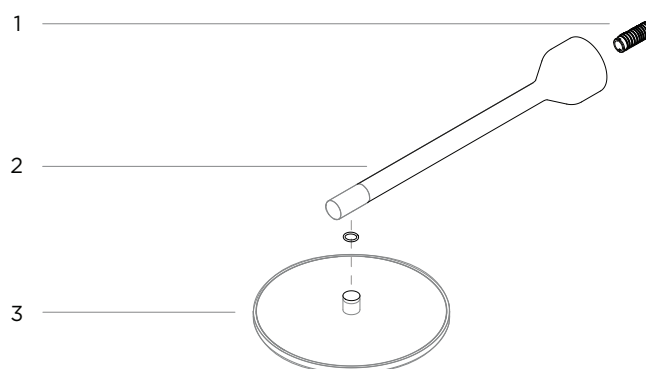
1. Panel Door, 1x
2. Orbital Shower Core, 1x
3. Control Dial , 1x (incl fixture 1x, screws 4x)
4. Sensor tank, 1x
5. Clip, 1x
6. Sensor Tank Dock, 1x
7. Sensor Tank Lock, 1x
8. Spring Lock, 1x
9. Filter capsule, 1x
10. Cleaning tablets, 1x
11. Sensor cable, 1x
12. Recirculation hose, 1x
13. Flush hose, 1x
14. Panel latch kit 1x
15. Hose connection, 1x
16. Ethernet kit, 1x

Component Overview Technology kit Shower heads & diverter



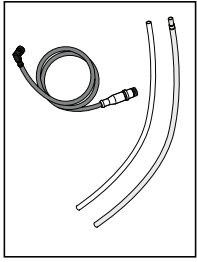
1. Hand shower with hose, 1x
2. Head shower arm, 1x
3. Head shower, 1x
4. Diverter body, 1x
5. Diverter wall plate, 1x
6. Hand shower holder, 1x
7. Hand shower holder cover, 1x + set screw, 1x
8. Threaded adapter, 1x
9. Screw and tool kit, 1x
10. O-ring kit, 1x

Component Overview Technology kit Shower heads

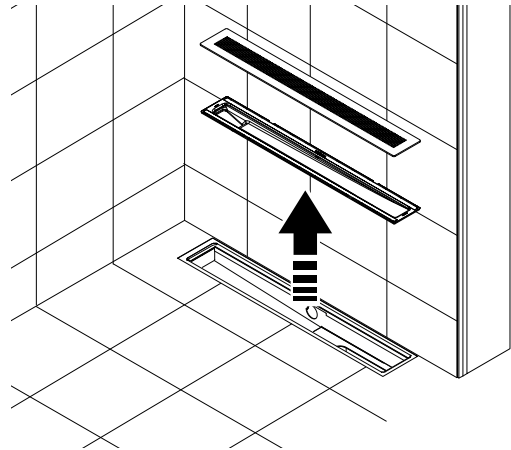
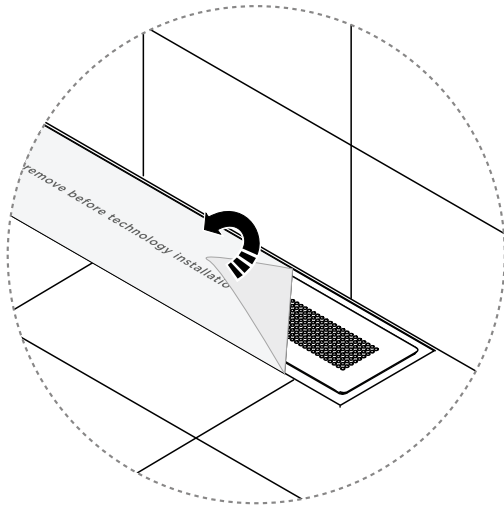


1. Threaded adapter, 1x
2. Head shower arm, 1x
3. Head shower, 1x

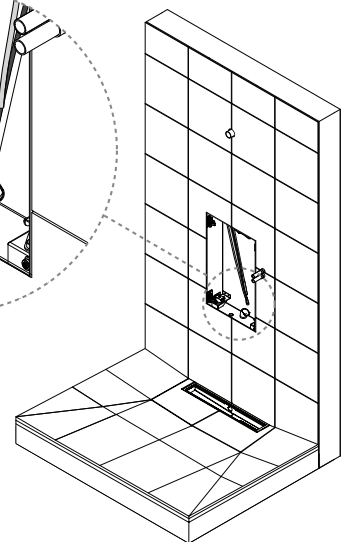
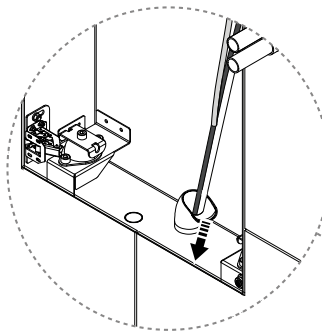
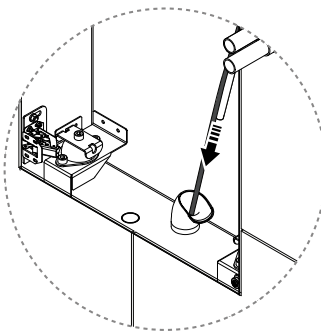
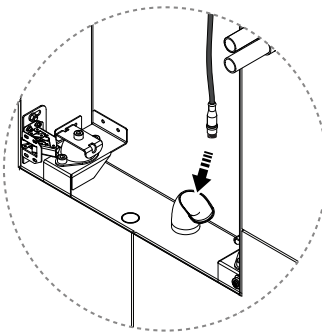
Install Sensor Hose, Flush Hose and Recirculation Hose



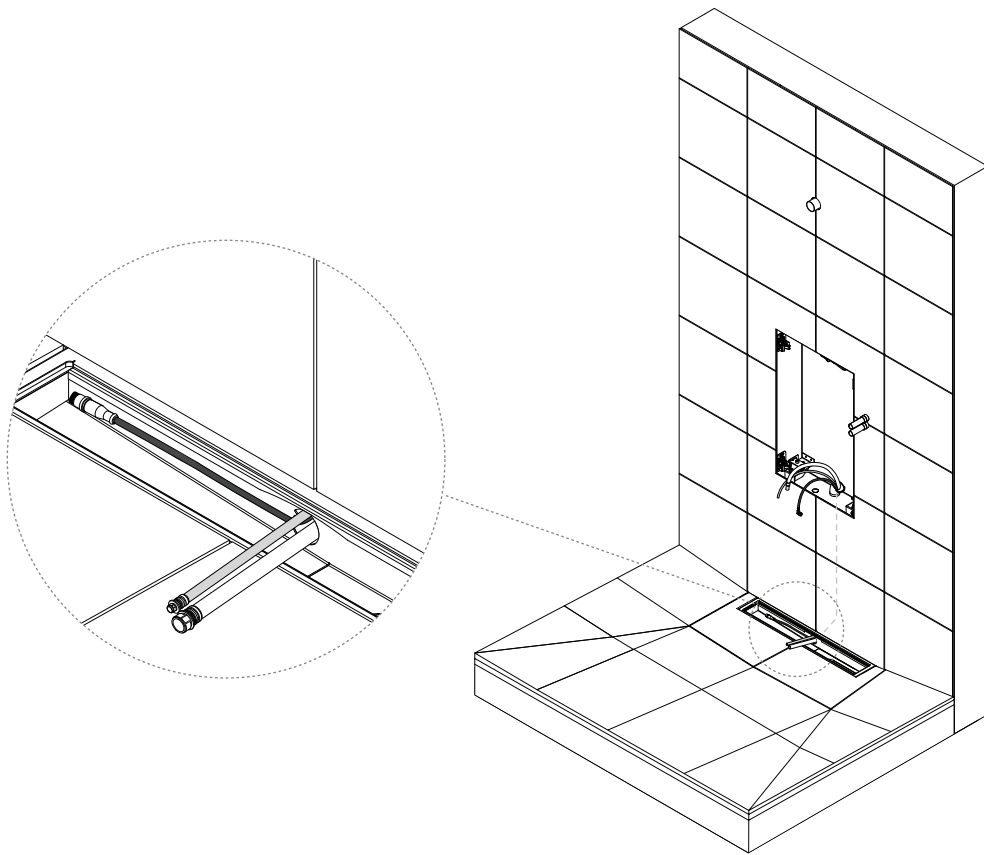
1.



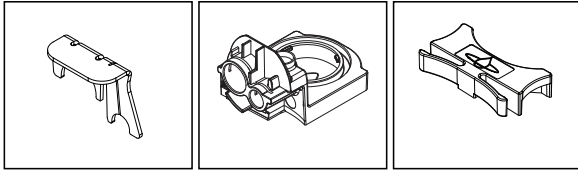
2. Install Sensor Cable, Flush Hose and Recirculation Hose. Make sure the Sensor Cable goes first.



-
- 3.** Pull the Sensor Cable out to where the contact almost reaches the end of the Sensor Tank.

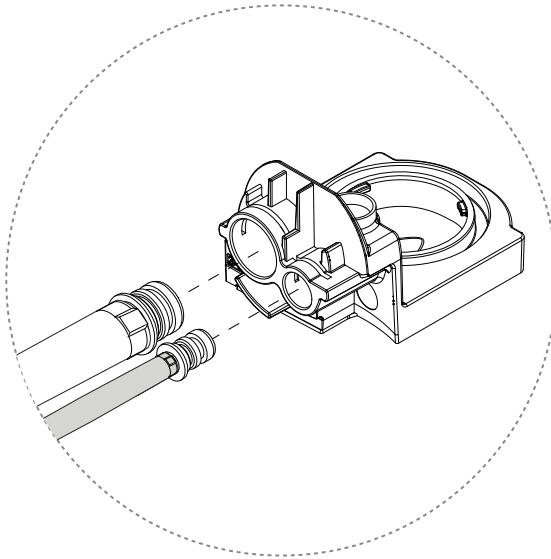


Install Sensor Tank Dock

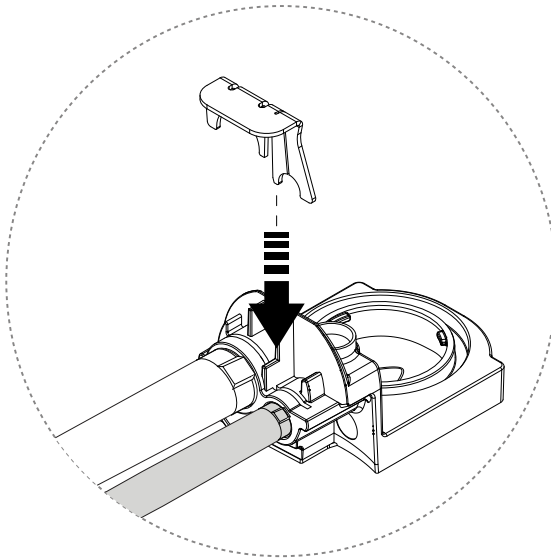


- 1.**  **NOTICE**
Apply lubricant according to industry rules. Make sure that the o-rings are lubricated.

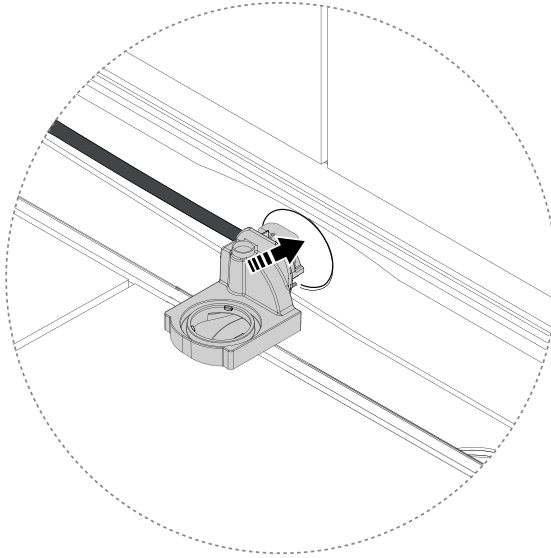
Connect Hoses to Sensor Tank Dock.



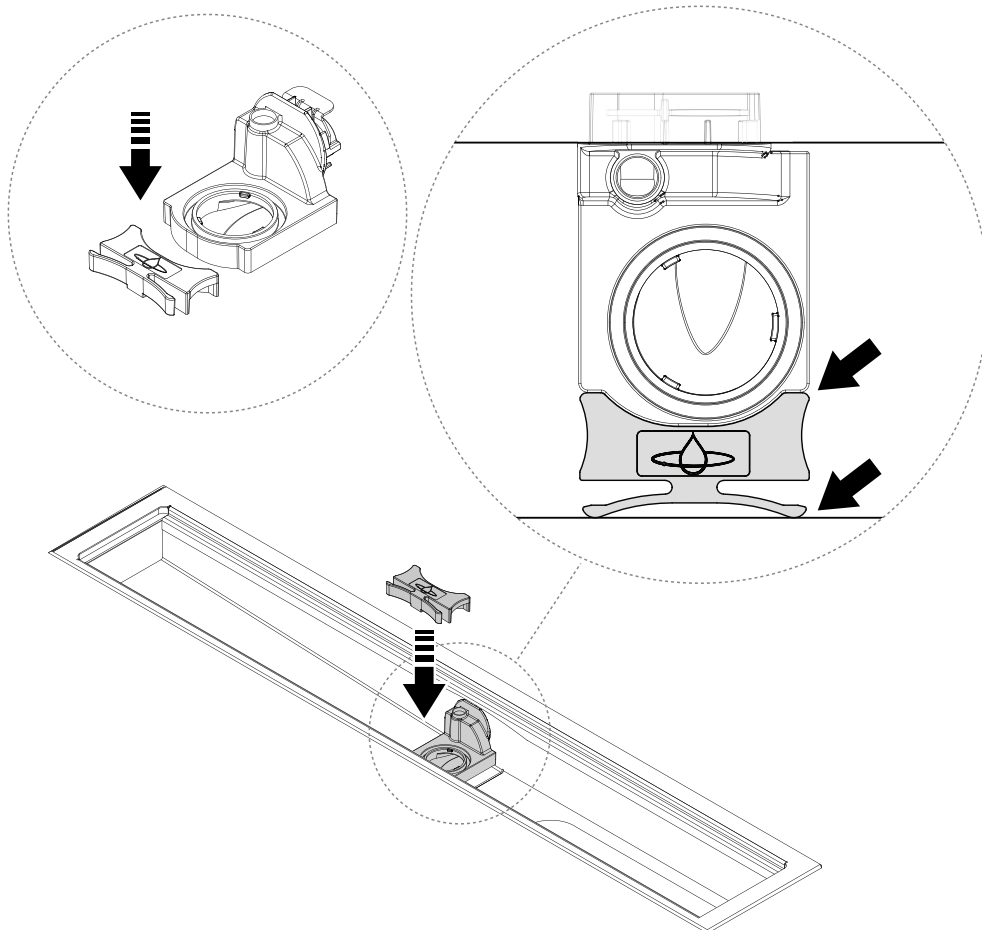
- 2.** Lock Hoses by inserting Clip.



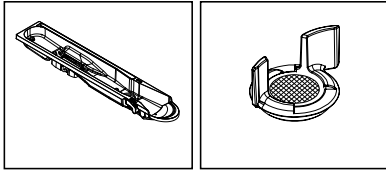
-
- 3.** Insert Sensor Tank Dock into Connection Pipe. Push it all the way in.



-
- 4.** Lock Sensor Tank Dock in place with the Spring Lock.



Install Sensor Tank and Sensor Tank Lock

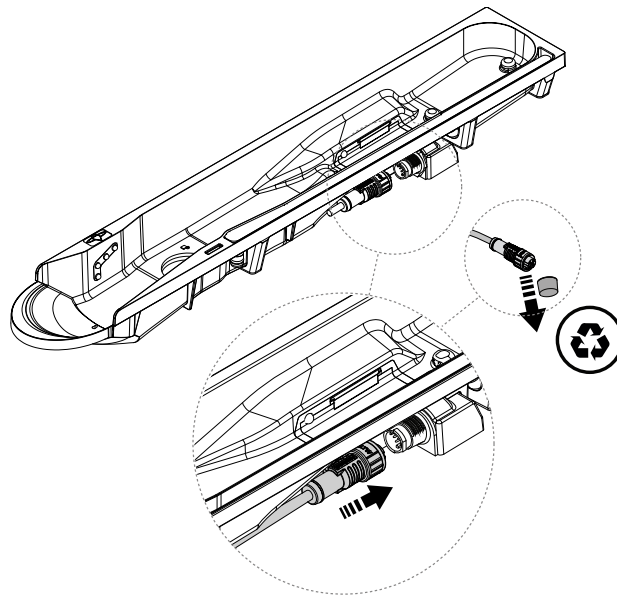


1. Connect the Sensor Cable to the Sensor Tank.

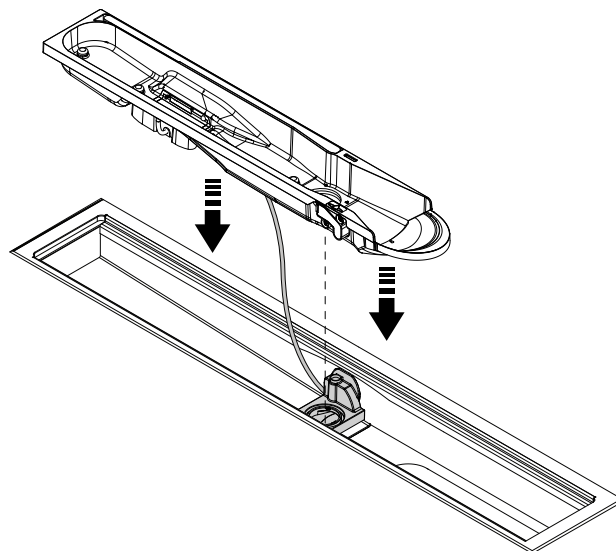


CAUTION

Make sure to have correct alignment between key and slot in connectors by aligning the two white lines.



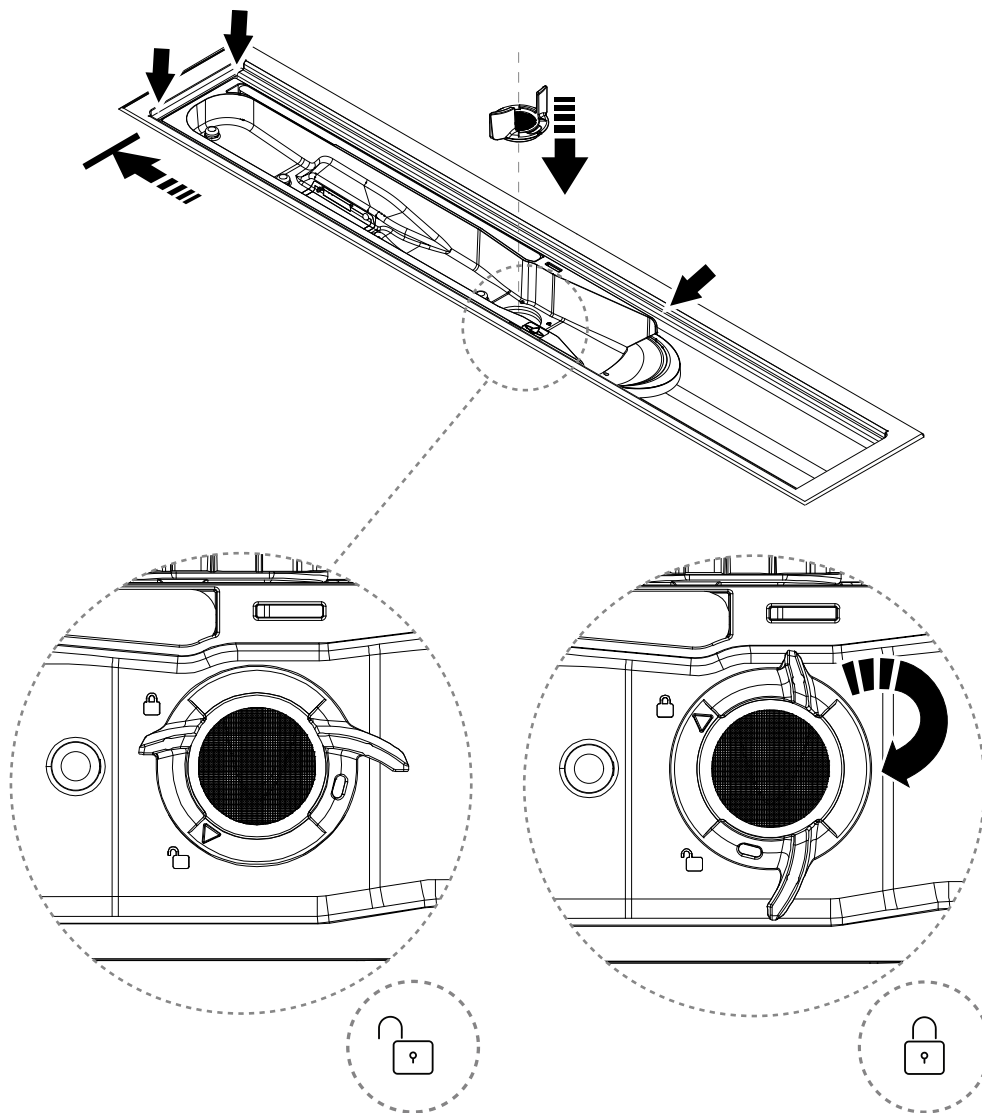
2. Insert Sensor Tank.



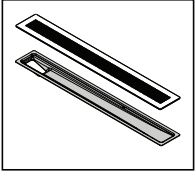
3. Lock the Sensor Tank in position with the Sensor Tank Lock by turning it 90 degrees.

**CAUTION**

Make sure Sensor Tank is inserted correctly. The edge of the Sensor Tank should be fully pushed towards and in level with the edge of the Drain Unit.

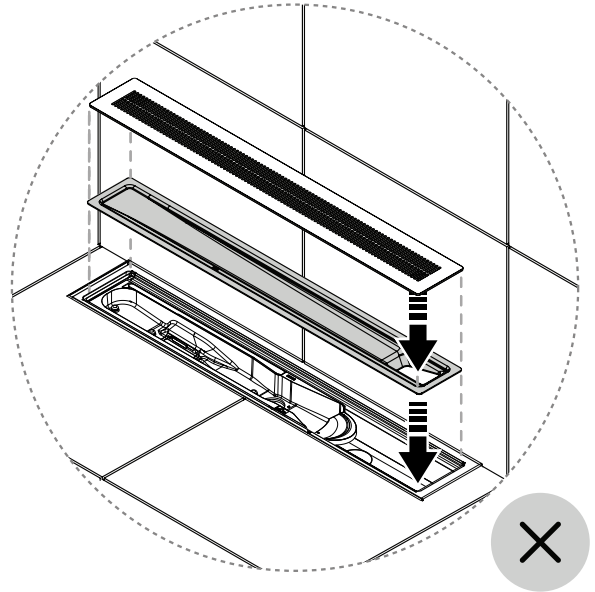
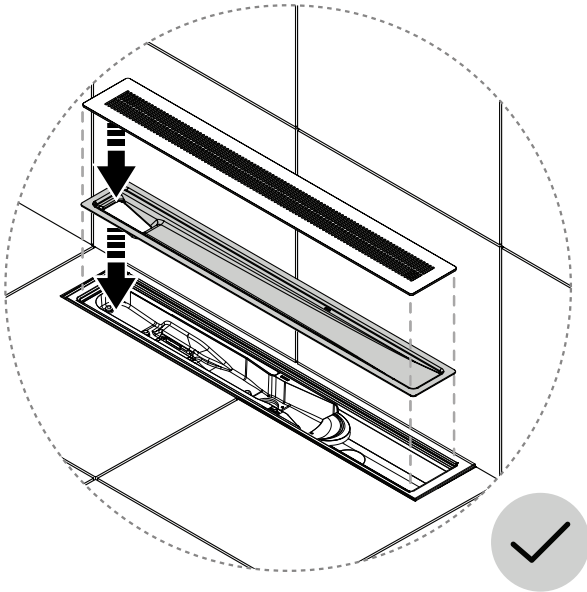


Install Funnel

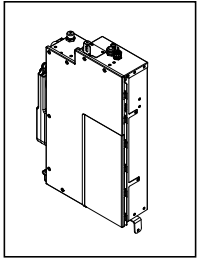


NOTICE

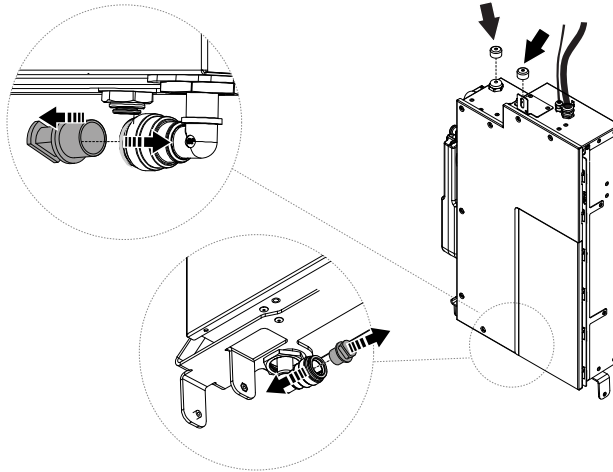
Place the Funnel with the hole oriented to the left! Placing the hole oriented to the right will disable recirculation.



Install Orbital Shower Core



1. Remove Transport Plugs before installation.

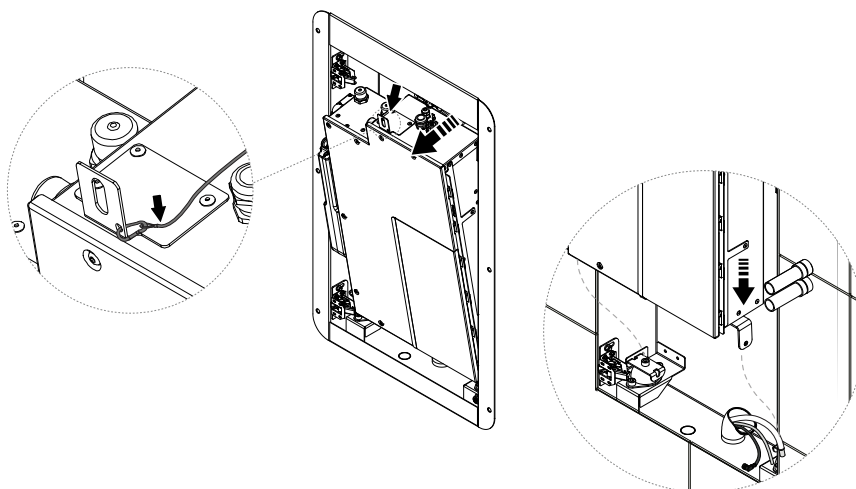


2. Insert Orbital Shower Core into the Wallbox and attach Safety Wire. Keep tilted to enable electrical installation.



CAUTION

- Heavy equipment. The Orbital Shower Core weighs approx. 25 kg.
- Make sure to attach the Safety Wire before tilting the Orbital Shower Core.
- Make sure Hoses and Cables are not pinched or kinked.

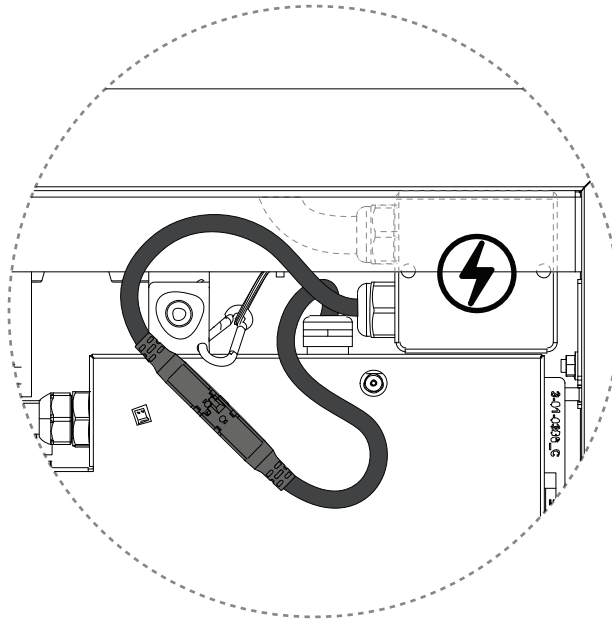


3.

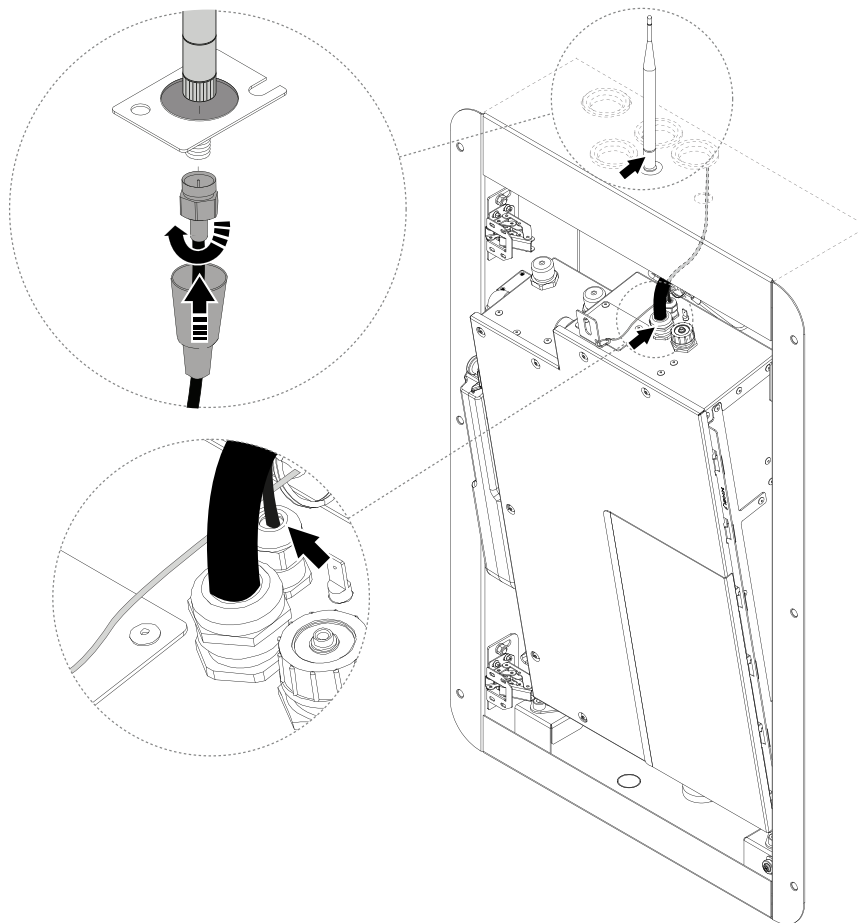


WARNING

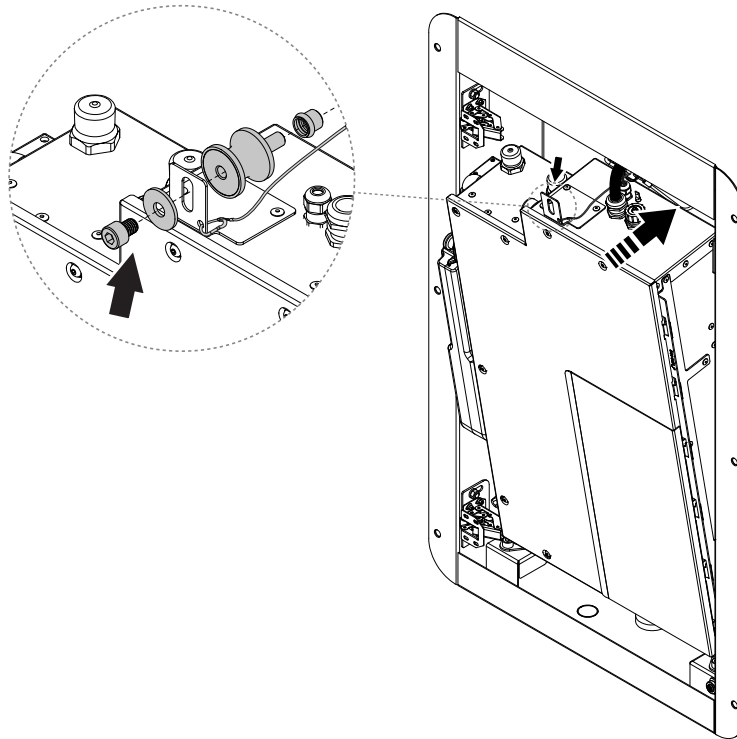
Electrical installation should be performed according to industry rules by a competent electrician.



4.



5.



x1

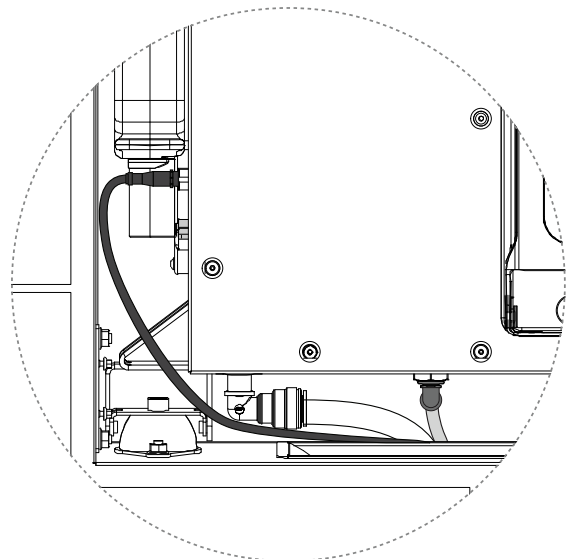
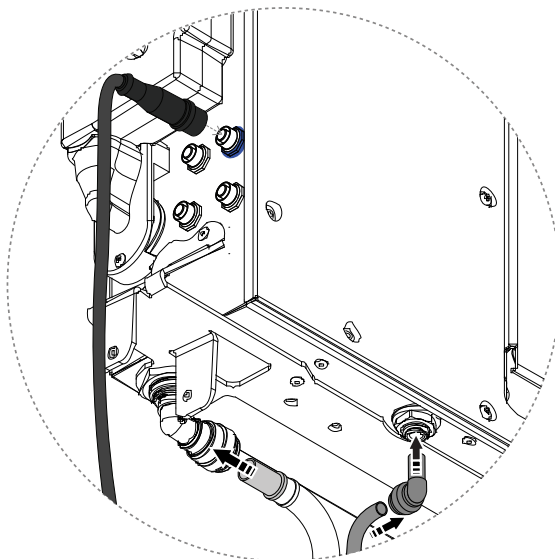
M8 socket head

6.

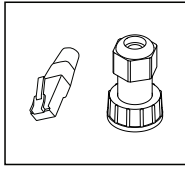


CAUTION

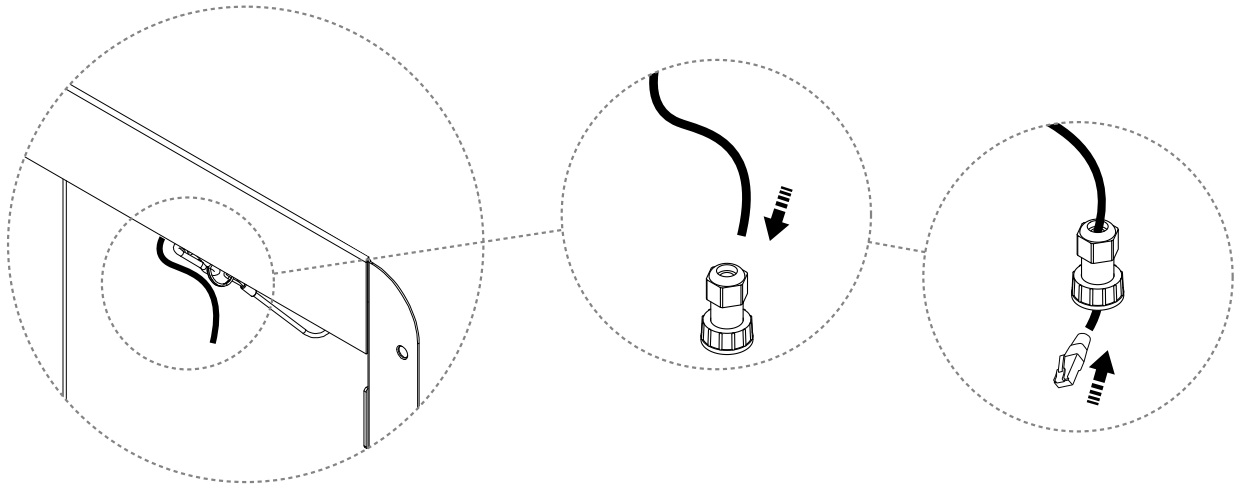
Make sure to have correct alignment between key and slot in connectors.
Make sure locking ring snaps and connector is locked.



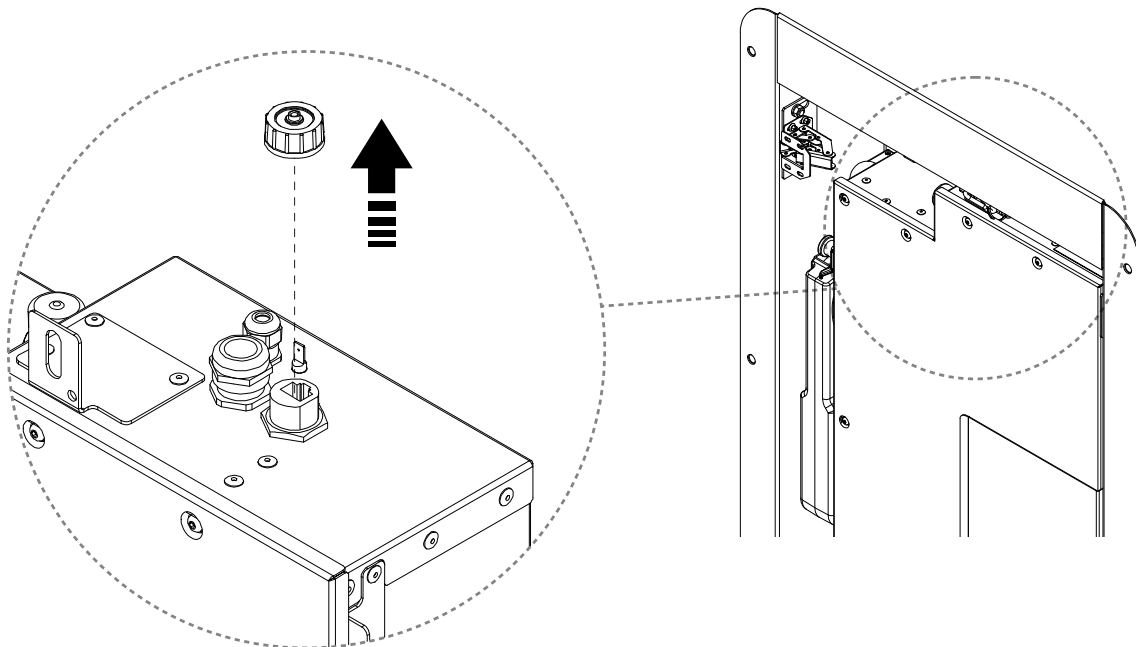
7. Only valid for Orbital Ethernet installation



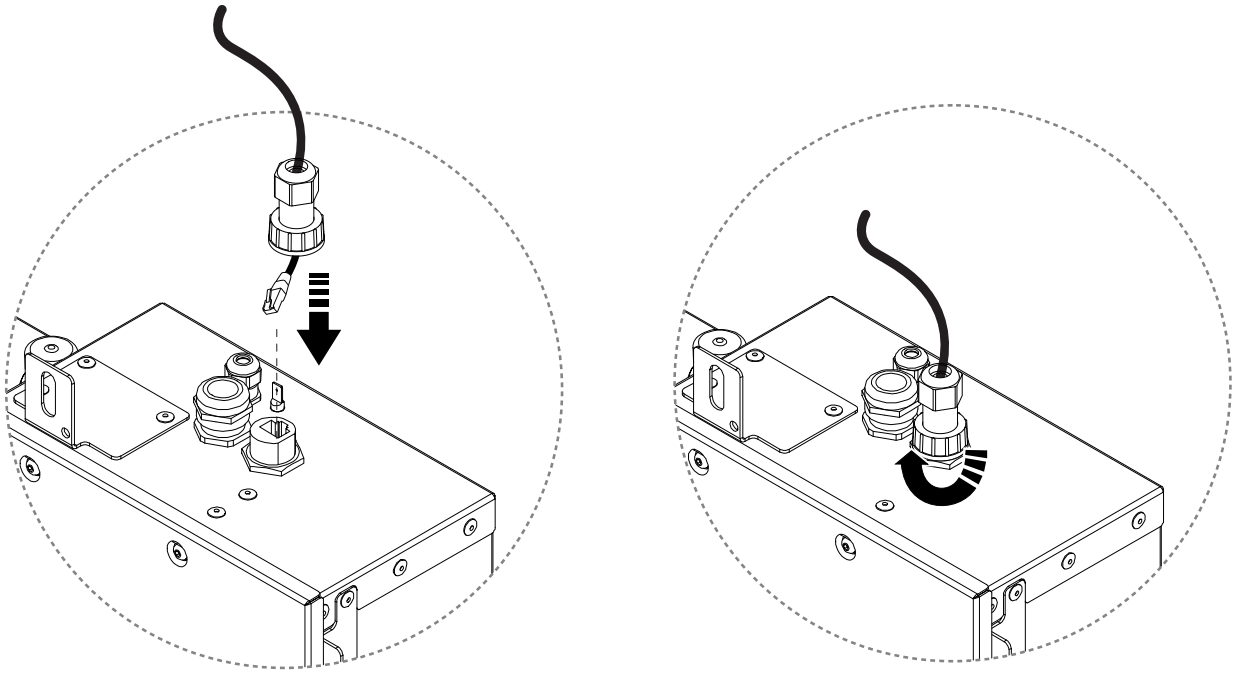
Pull Ethernet cable through the cable connector and attach the RJ45 connector.



8. Make sure the core is not tilted out, keep it in up-right position.

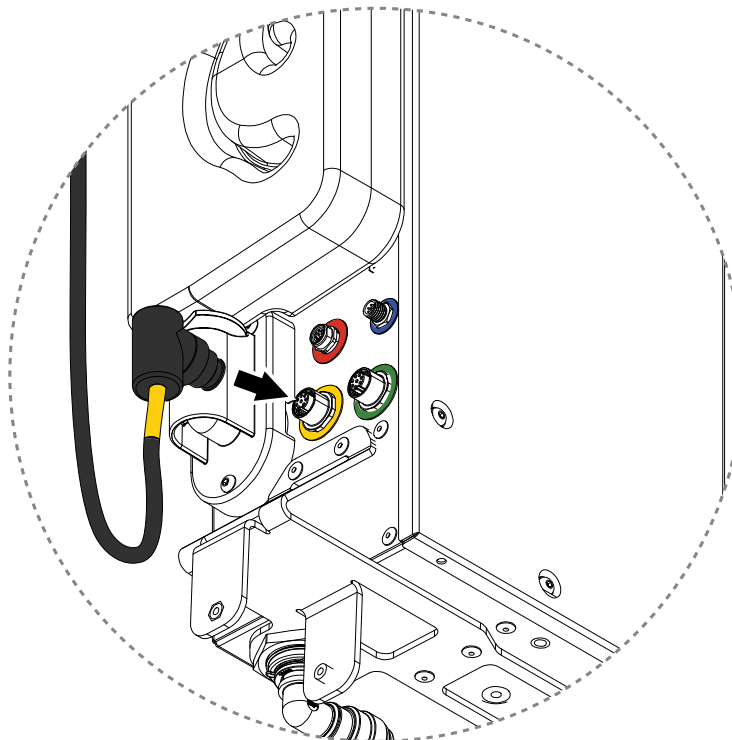


-
9. Hand tighten cable connectors to avoid damage.

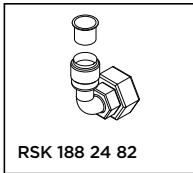


10. Only valid for Orbital Audio Installation

Connect the amplifier cable to the core.



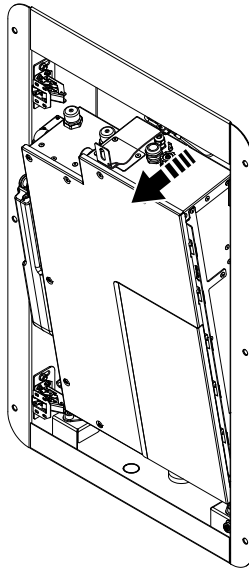
Install Hose Connections



Provided by Customer:

- Hose Connections, x2

1.

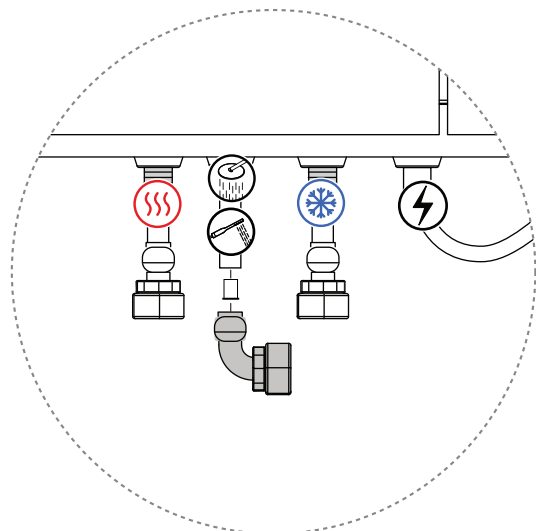
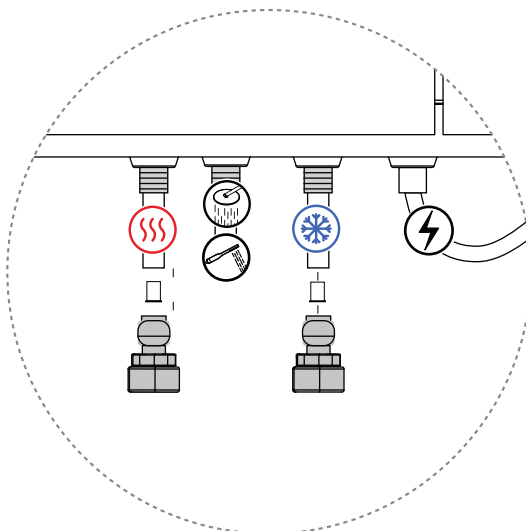


2.

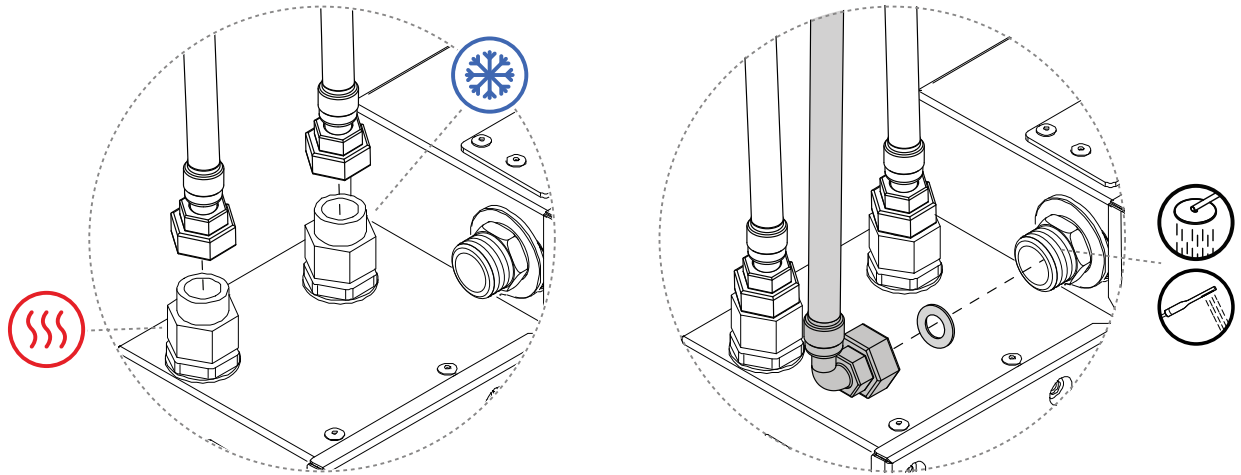


CAUTION

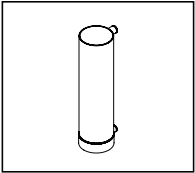
- Install Hose Connections according to industry rules.
- Make sure to flush out the water lines from debris before connecting the Core.



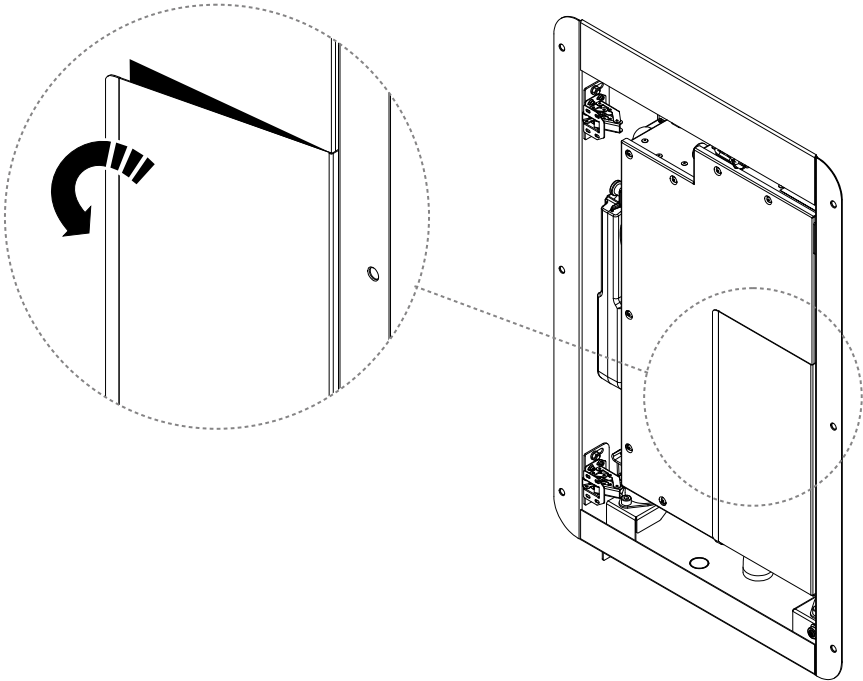
3. Connect incoming and outgoing water to the core.



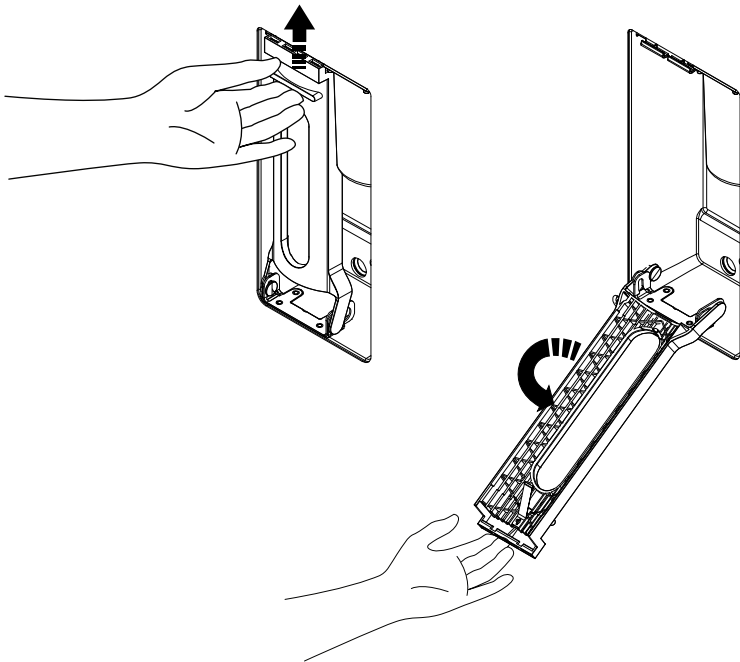
Add the Filter Capsule



1.



2.

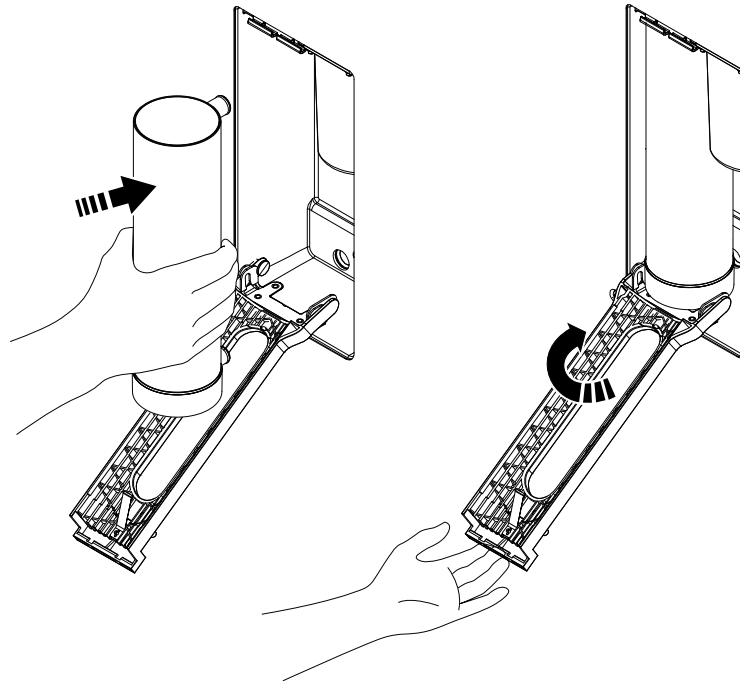


3. Insert Filter Capsule.

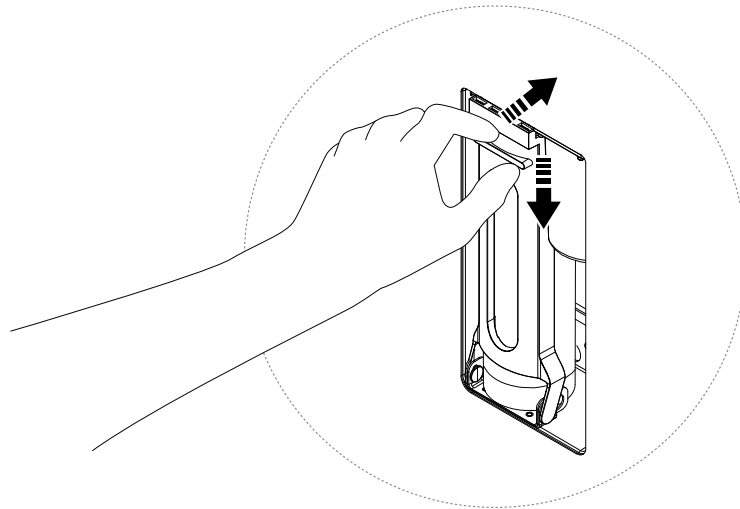


RISK OF LEAKAGE

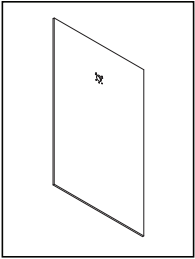
Make sure Filter Capsule is inserted all the way in or leakage may occur.



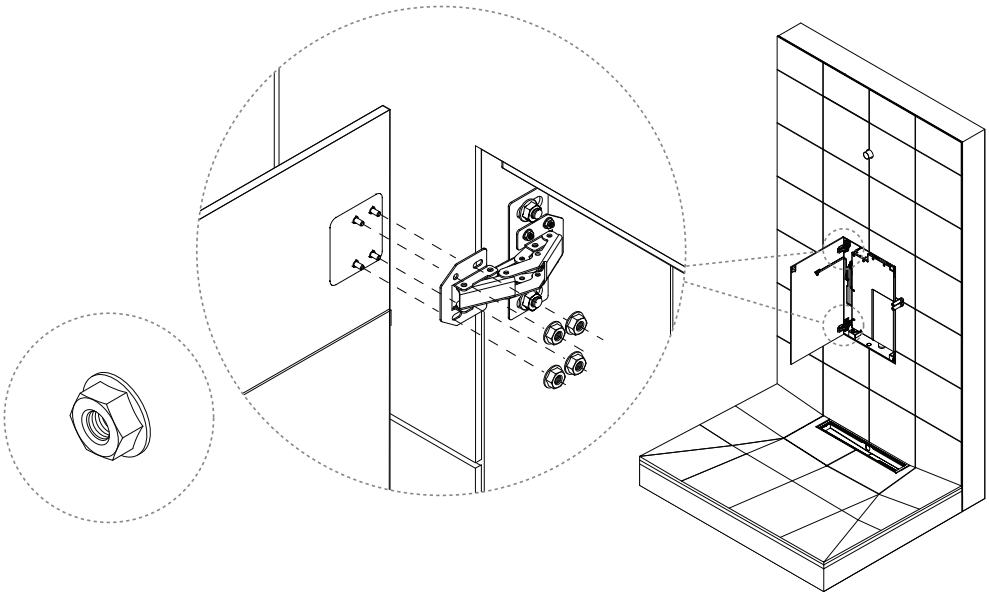
4. "Click!"



Install Panel

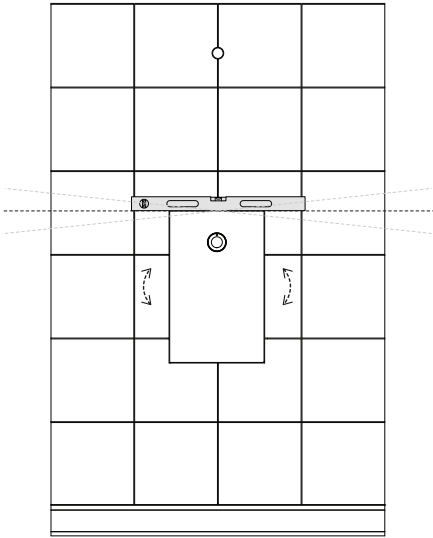


1.

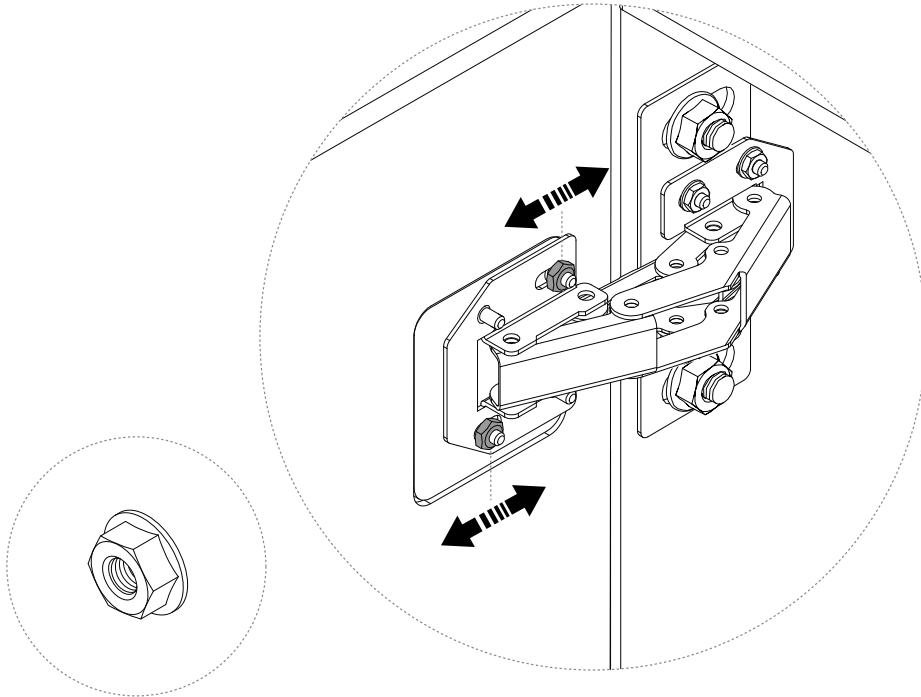


x8
M3 (5.5mm driver)

2. Adjust Panel angle.



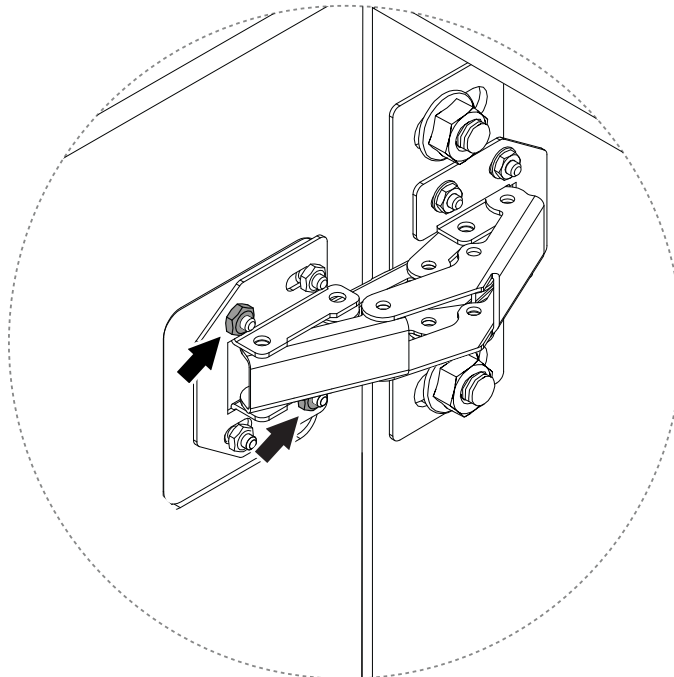
3. Adjust



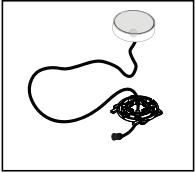
x4

M3 (5.5 mm driver)

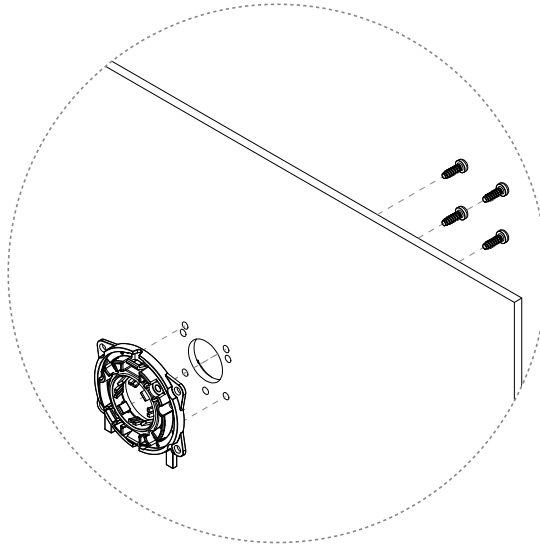
Secure



Install Control Dial



1.



x4

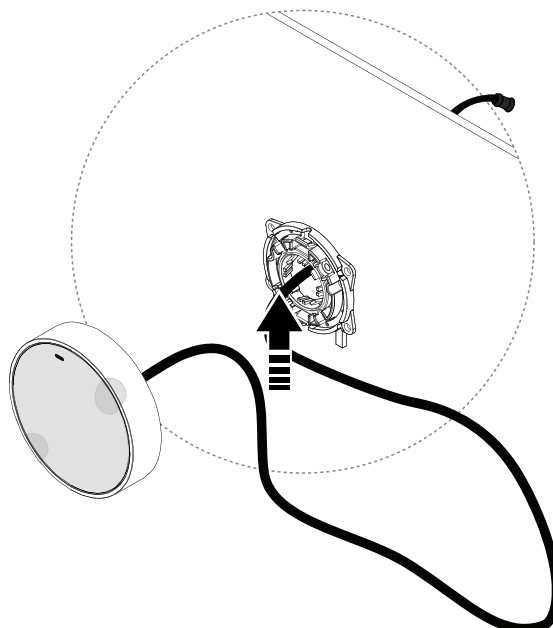
Plastite screw

2.

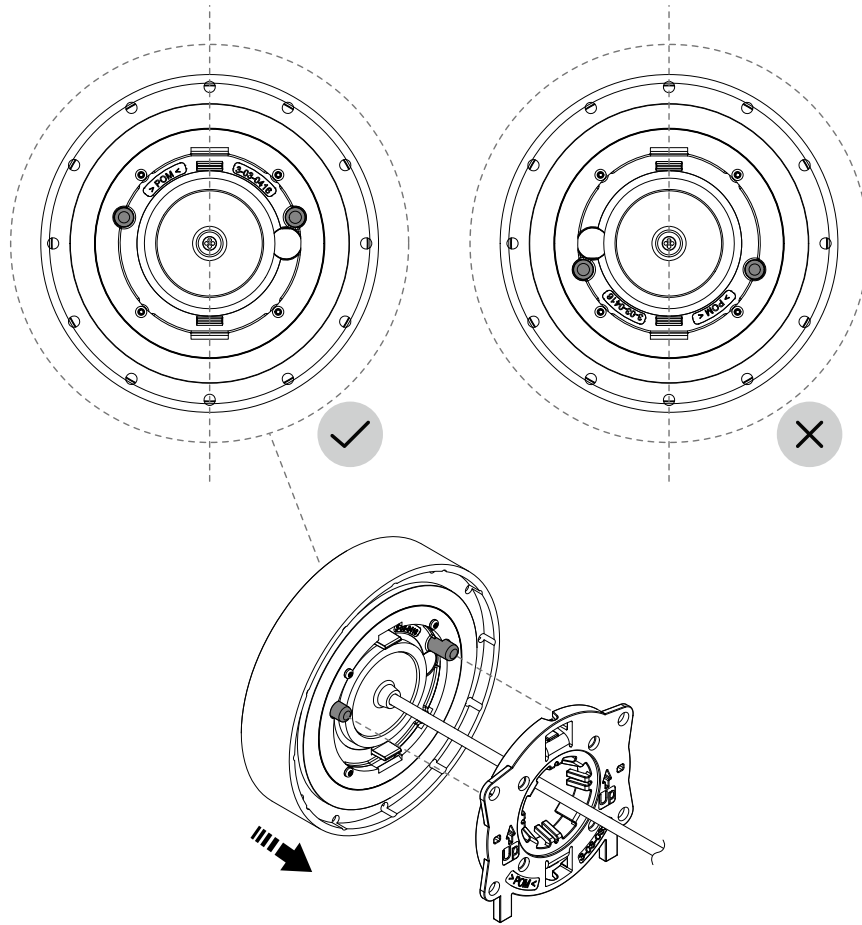


NOTICE

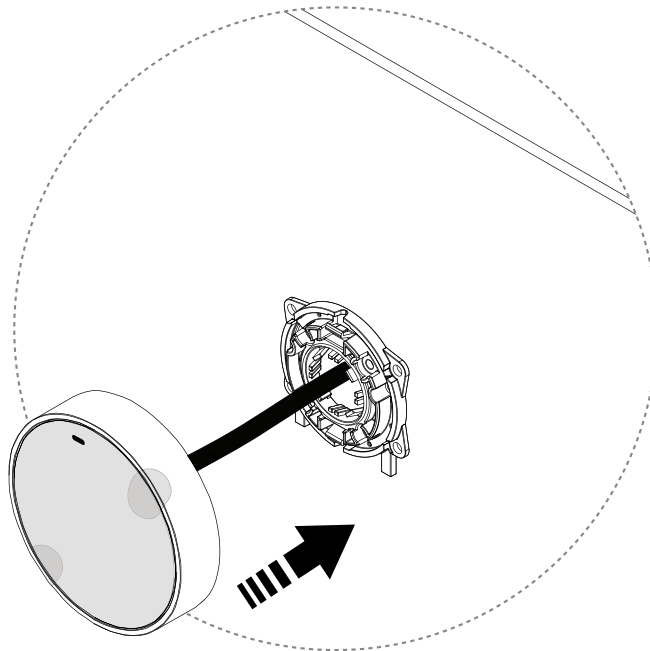
Do not remove the protective cover from the Control Dial until installation is completed.



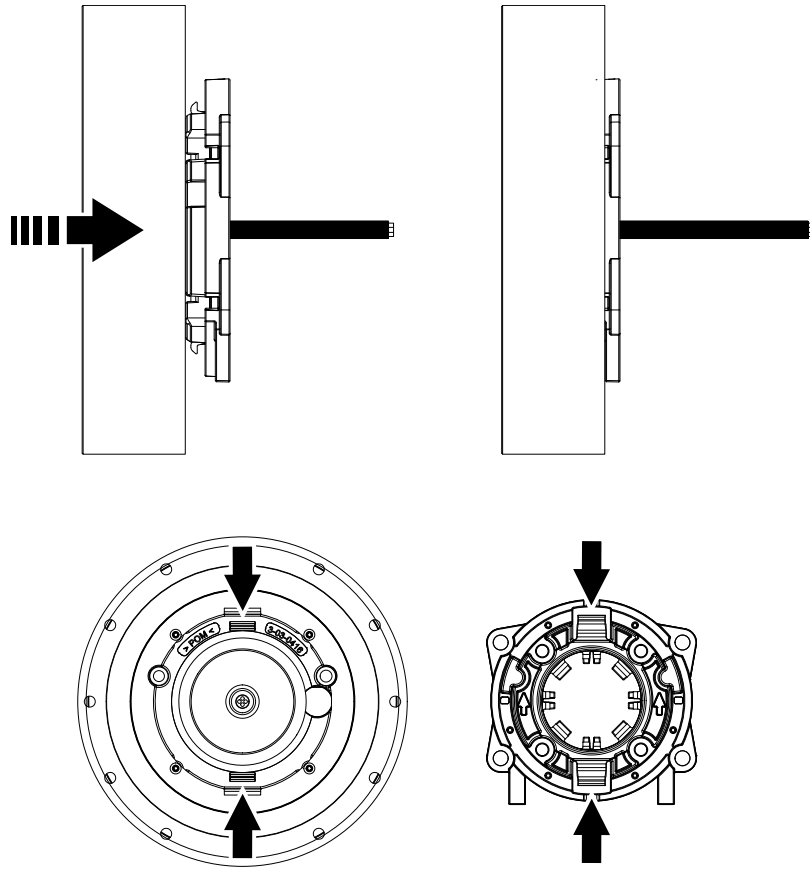
-
3. Position the Control Dial according to the “up marking” before assembly.



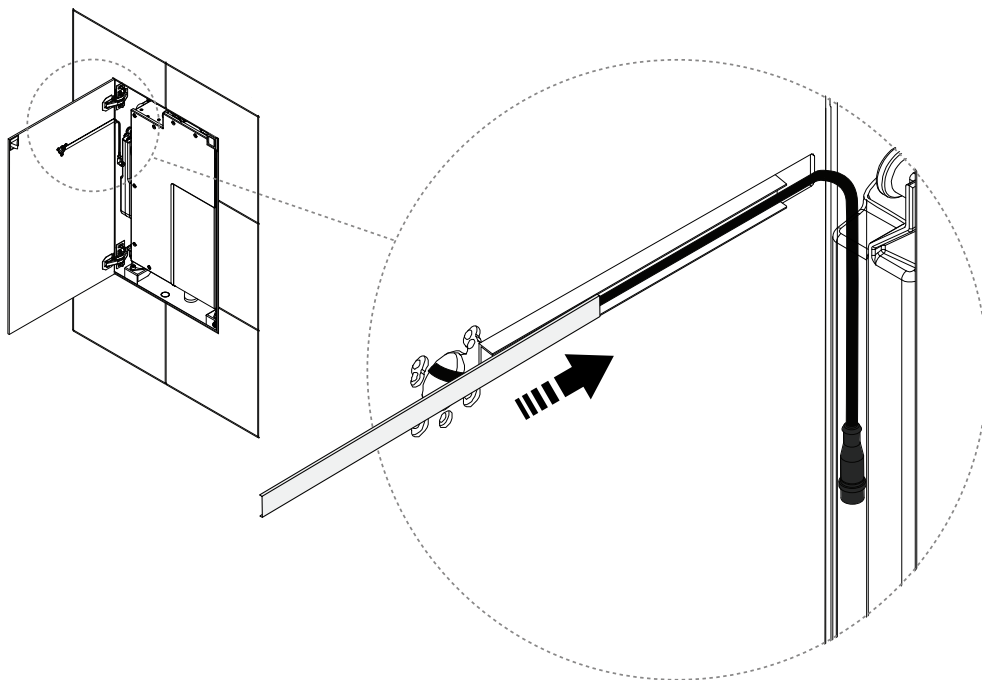
-
- 4.




-
5. "Click!" Snap on the Control Dial onto the Fixture. Make sure to align the brackets according to the arrows.



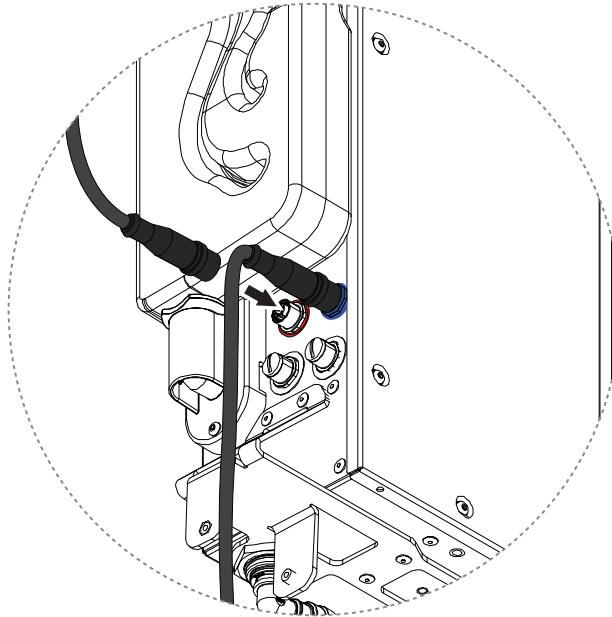
-
- 6.



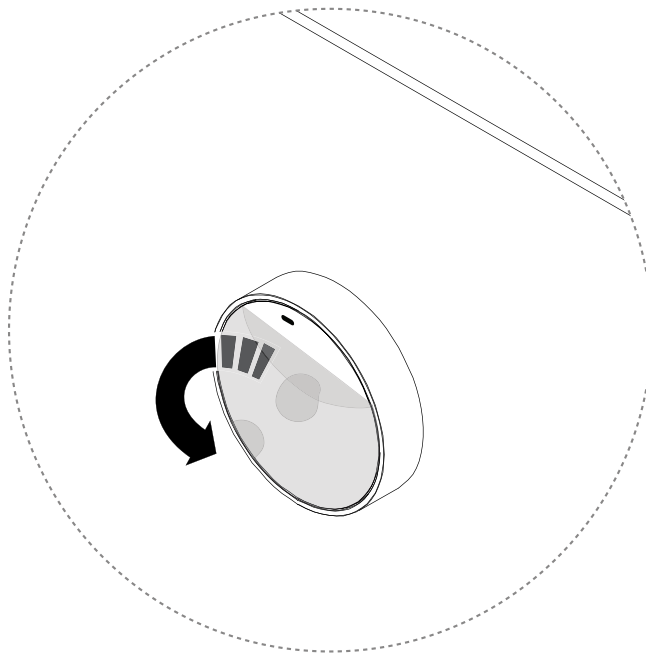
7. 

CAUTION

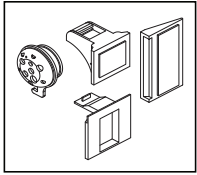
Make sure to have correct alignment between key and slot in connectors.
Make sure locking ring snaps and connector is locked.




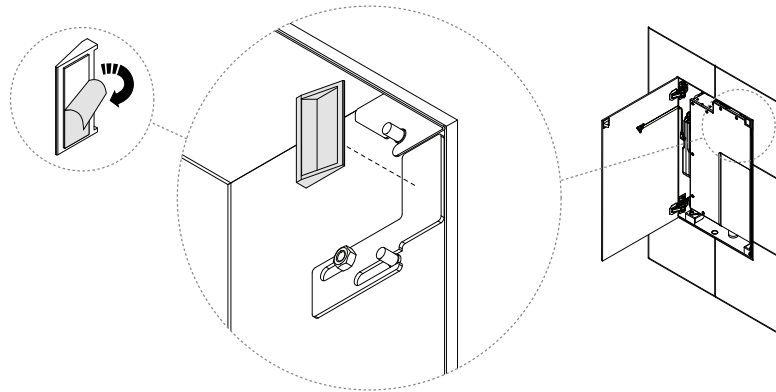
8.



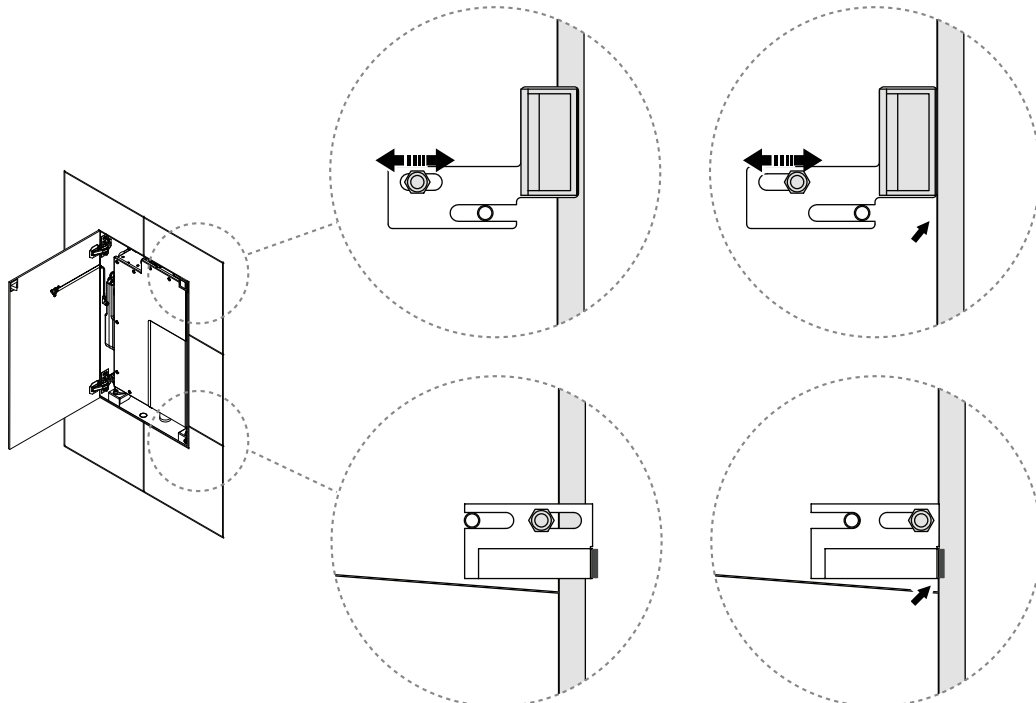
Install Panel Lock



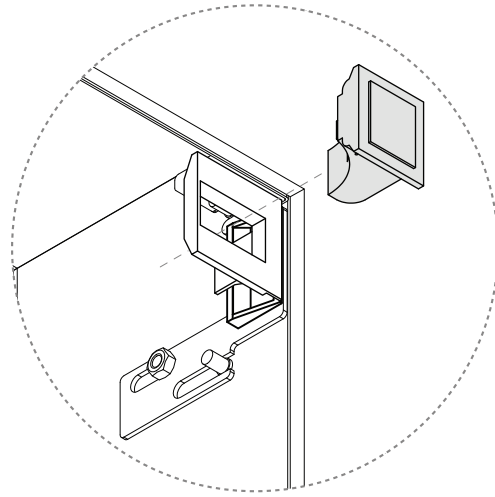
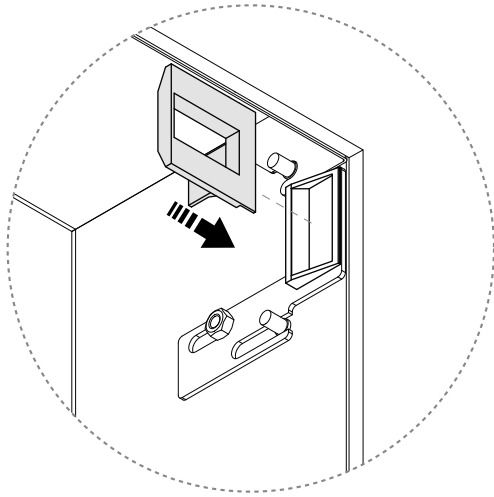
1.  **NOTICE**
Clean surface before attaching Bracket.



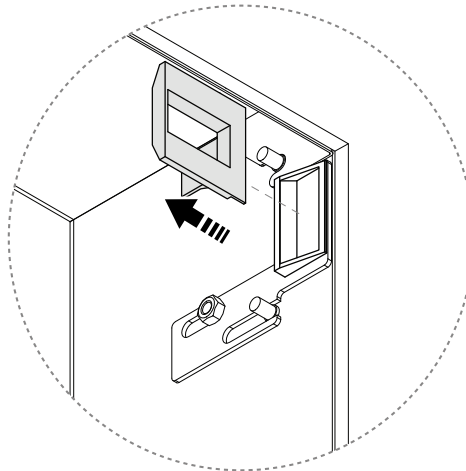
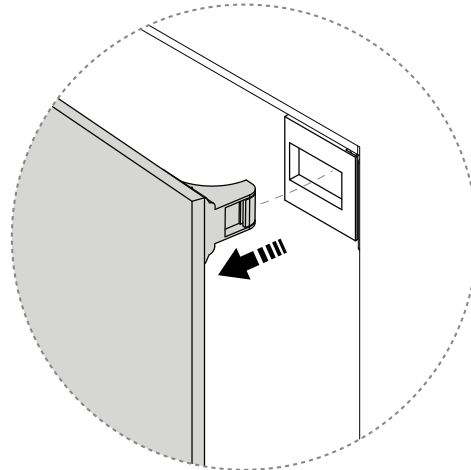
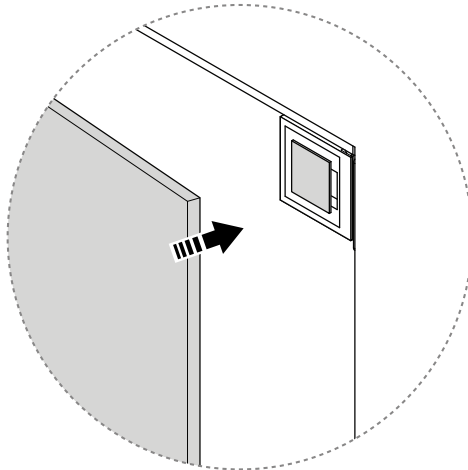
2. Adjust until edge aligned to edge.
Adjust until edge aligned with magnet.



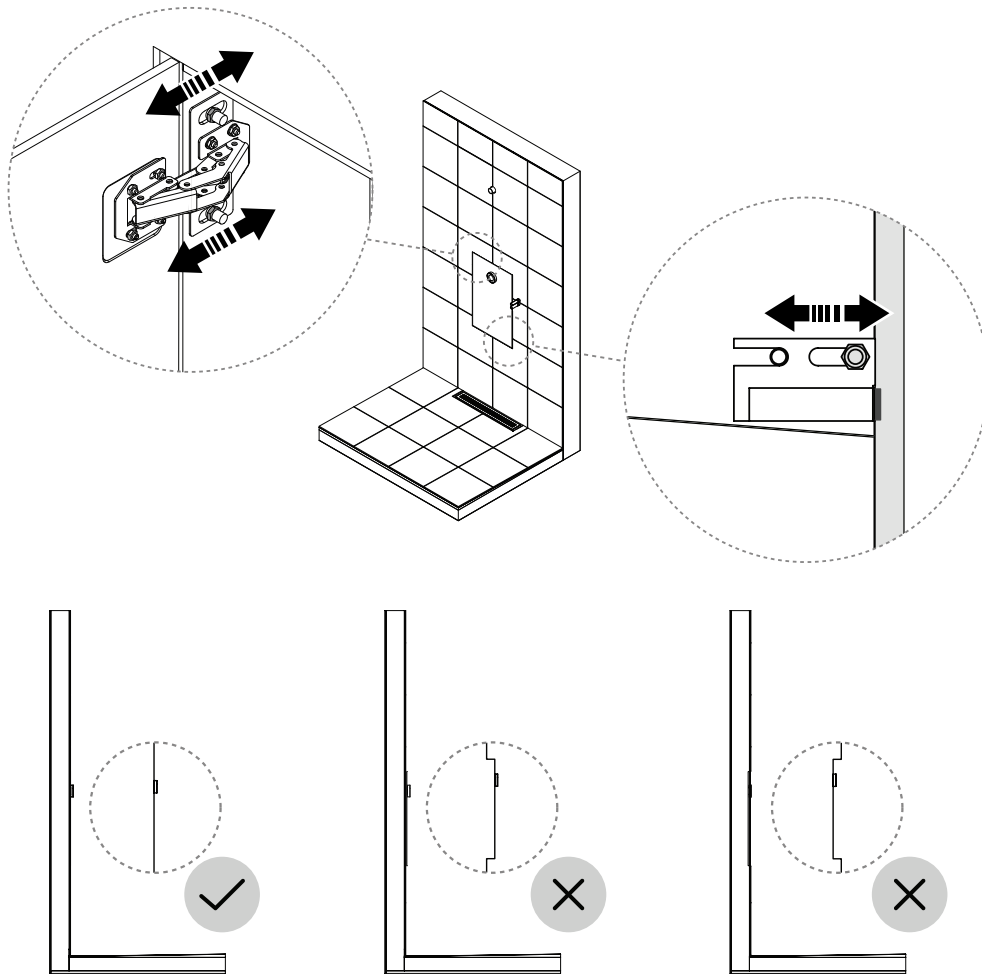
3.



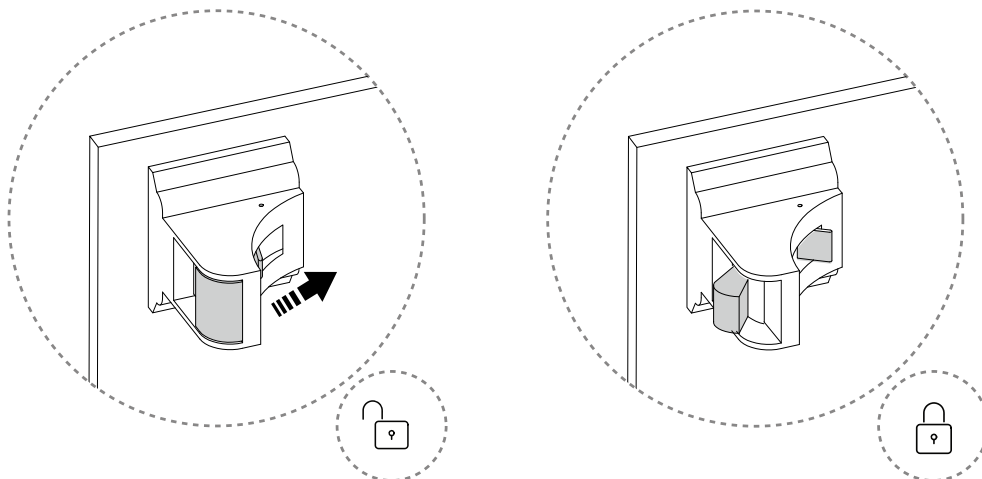
4.



5. Adjust Panel depth.



6. Set into locked position.



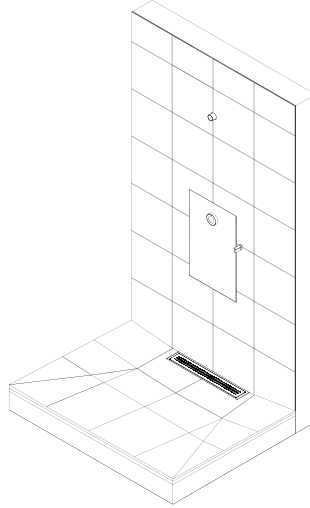
Next Step



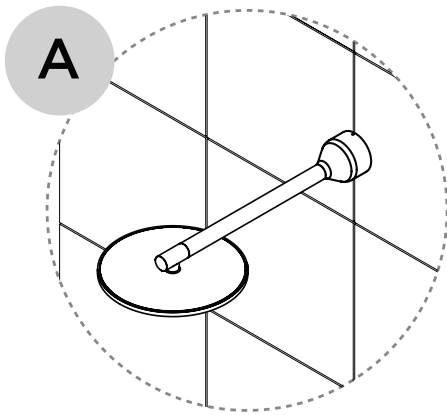
CAUTION

The Orbital Shower will not function without executing following steps.

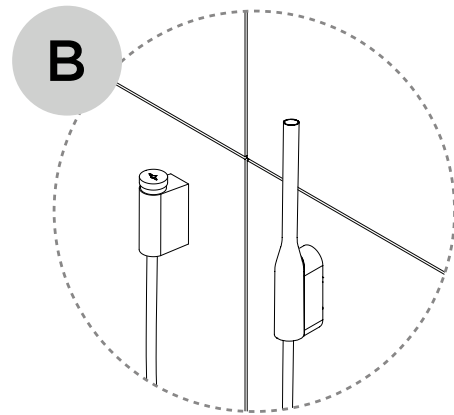
1. Orbital Shower Core installation completed.



2. Next step depends on Shower variant.



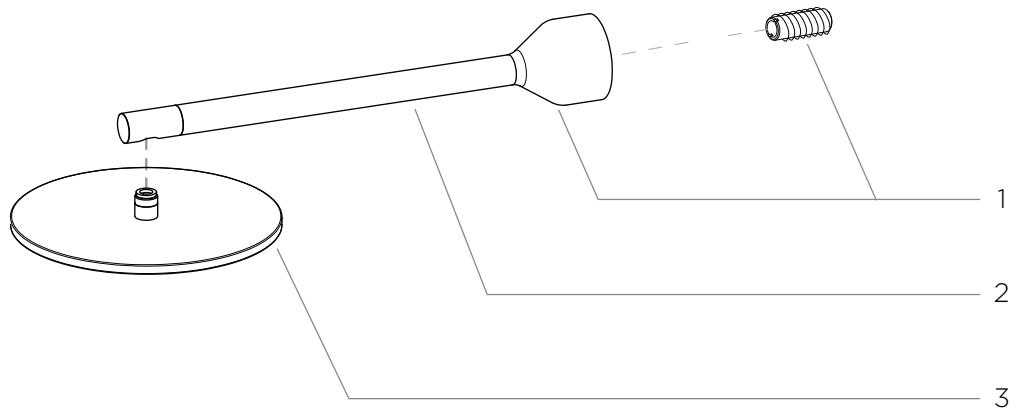
Follow steps valid for Orbital Systems Shower Head ([Installing the Shower Head \[37\]](#))



Follow steps valid for Orbital Systems Hand Shower ([Installing the Diverter and Hand Shower \[40\]](#), [Installing the Hand Shower Holder \[45\]](#) and [Installing the Hand Shower \[40\]](#))

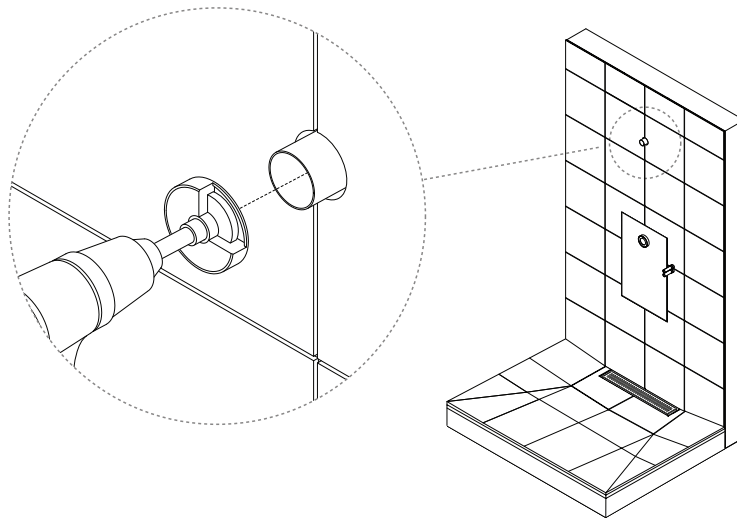
Installing the Shower Head

Component Overview

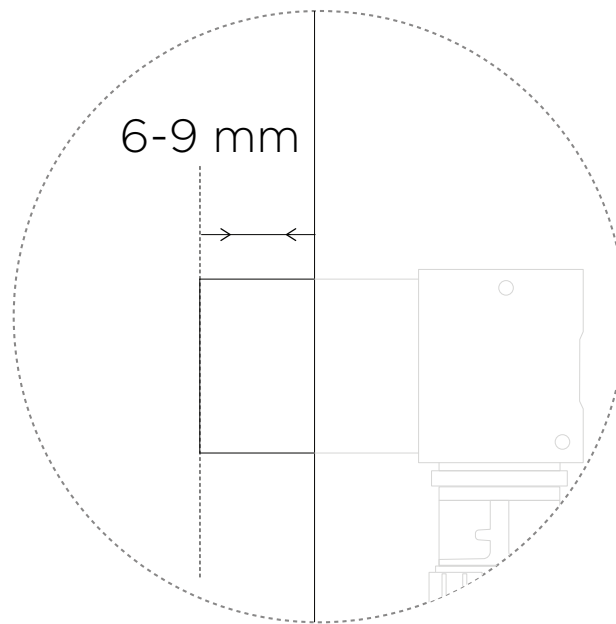


1. Shower Head Wall Mount
2. Shower Head Arm
3. Shower Head

-
1. It is recommended to cut the Wallbox UNI Push with the LK Wall Box Cutter UNI.



2.

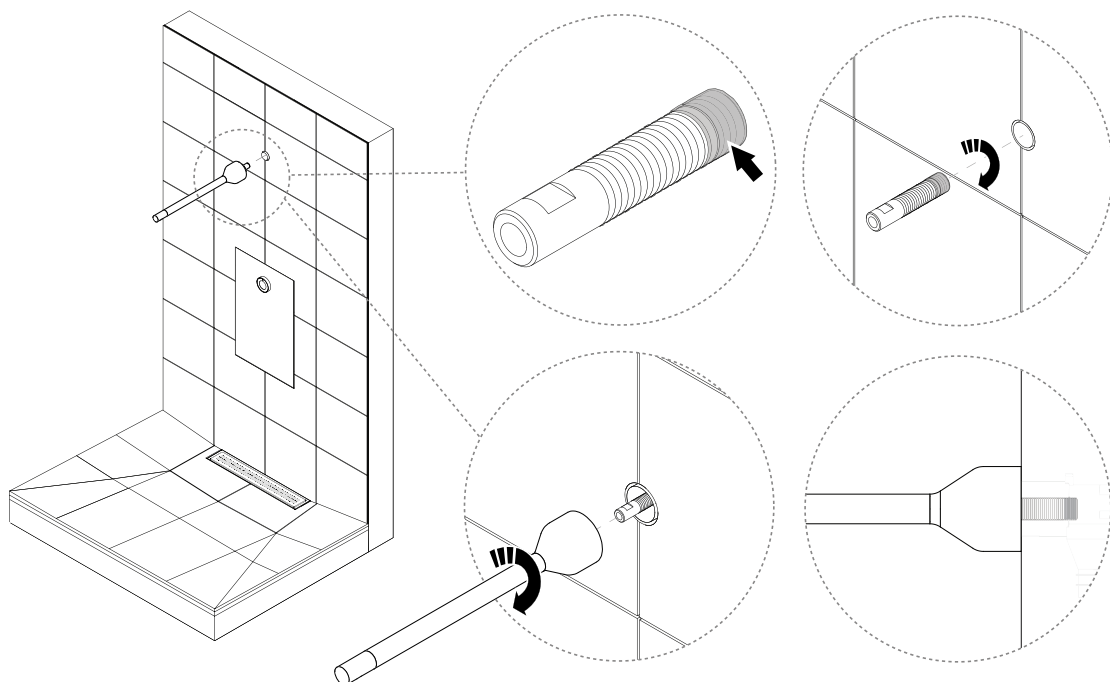



3.



NOTICE

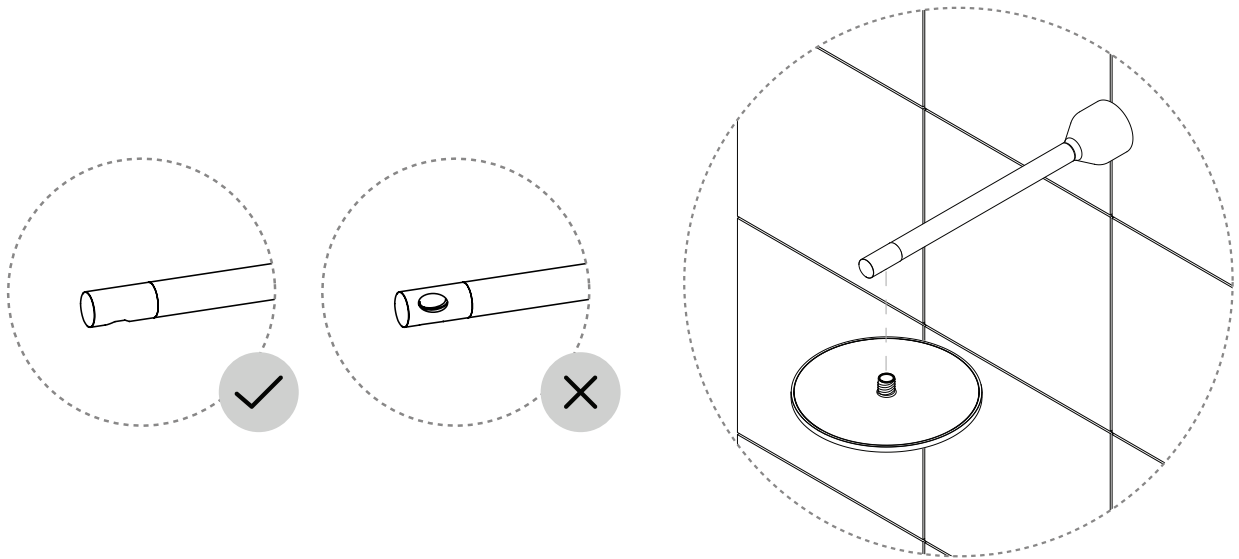
Cover the end of the Shower Water Connector with thread sealant to avoid leakage.



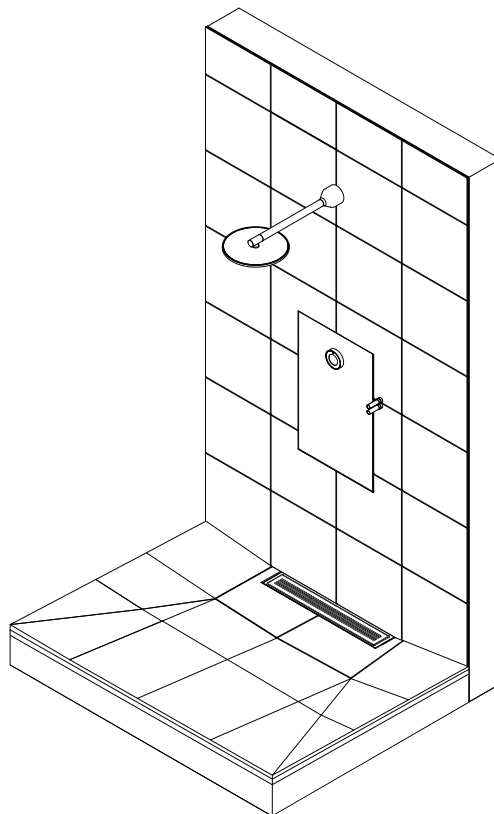
4. 

CAUTION

Make sure not to cross thread and not to overtighten.



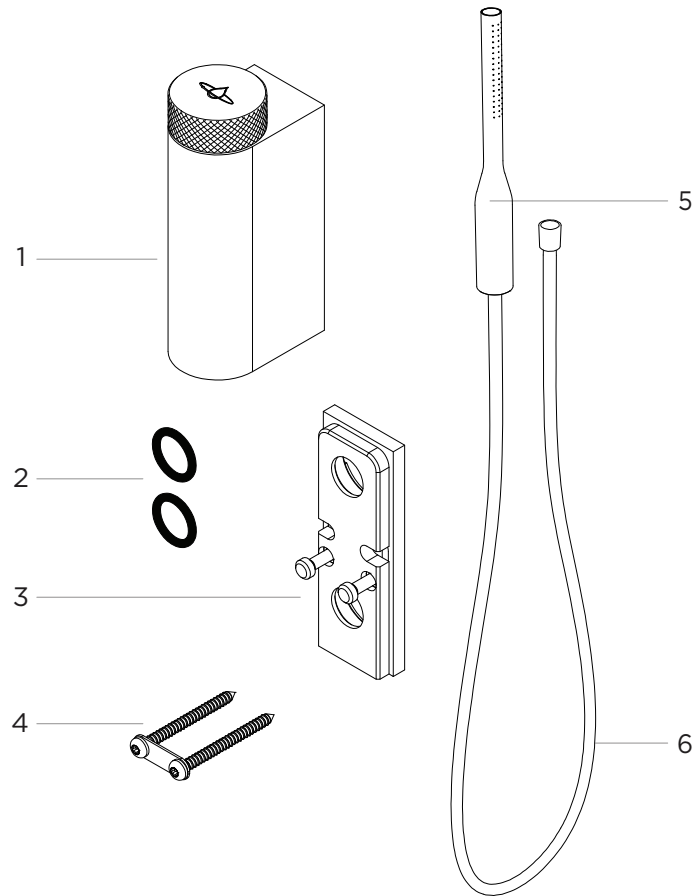
5. Shower Head installation completed.



Installing the Hand Shower

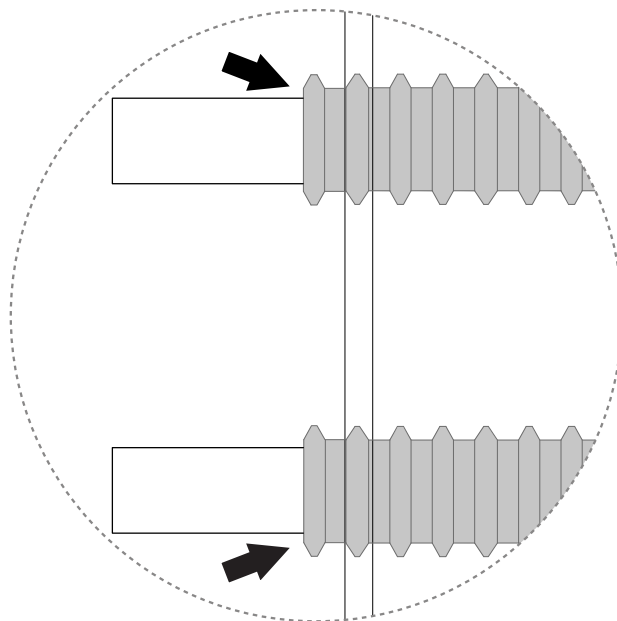
Installing the Diverter and Hand Shower

Component Overview

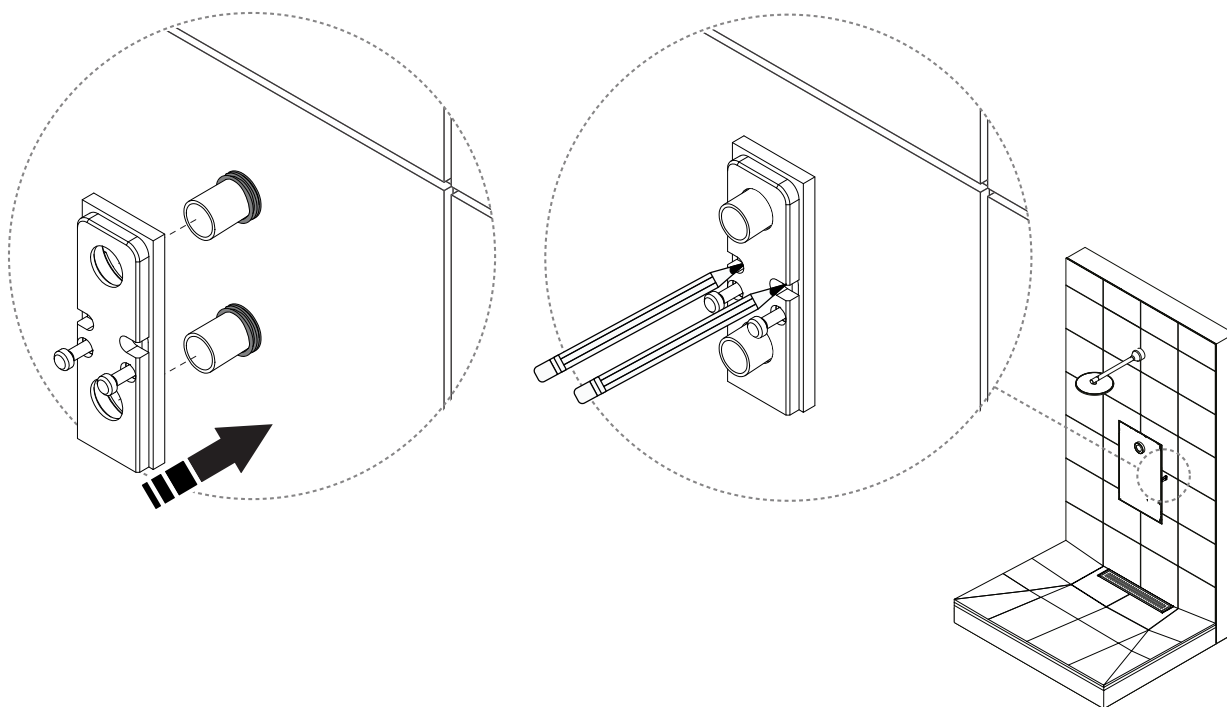


1. Diverter Body, x1
2. O-ring, x2
3. Diverter Wall Plate, x1
4. TX25 screw, x2 and Twin Washer, x1
5. Hand Shower, x1
6. Shower Hose, x1

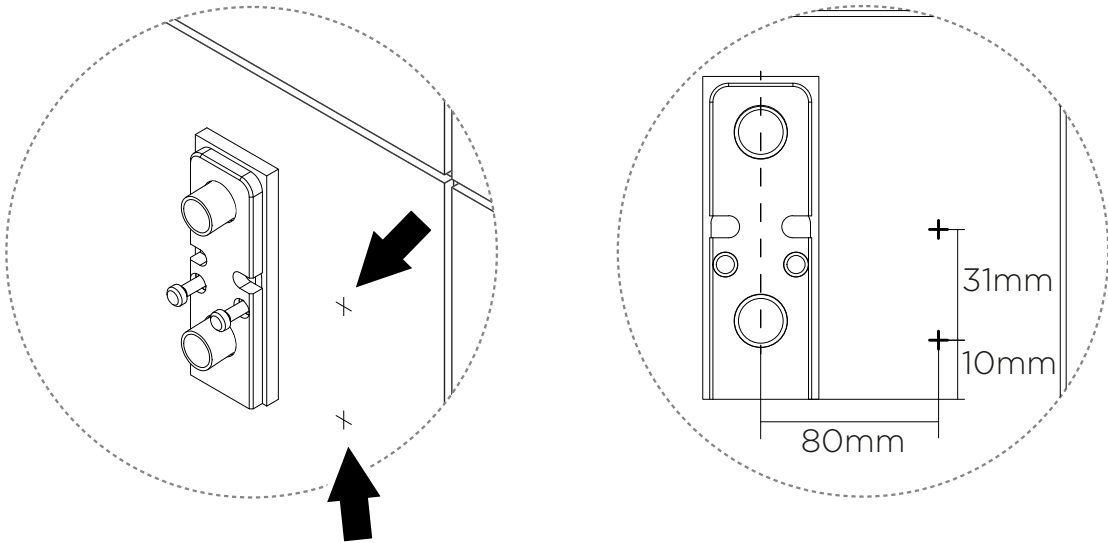
-
1. Cut Conduit minimum 6 mm, max 9 mm outside of tile surface.



2.



3. Mark hole positions for Hand Shower holder as well.

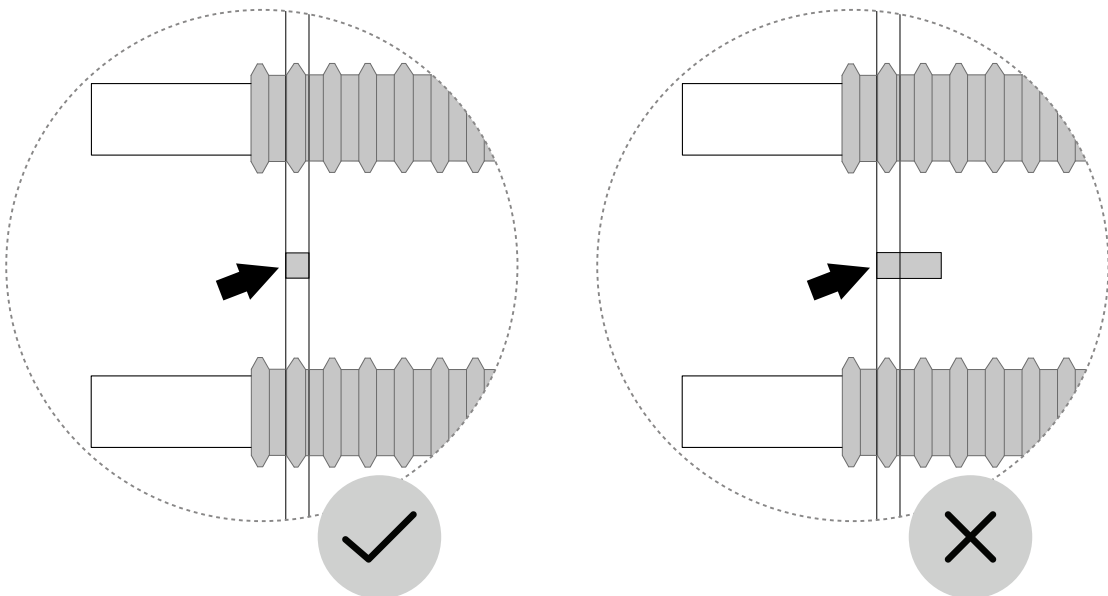


4. Drill 4 holes (6 mm) in marked locations.



CAUTION

- Only drill through the tile itself.
- Seal drill holes according to industry rules. See section [Seal mountings in wet zone \[8\]](#) for instruction.

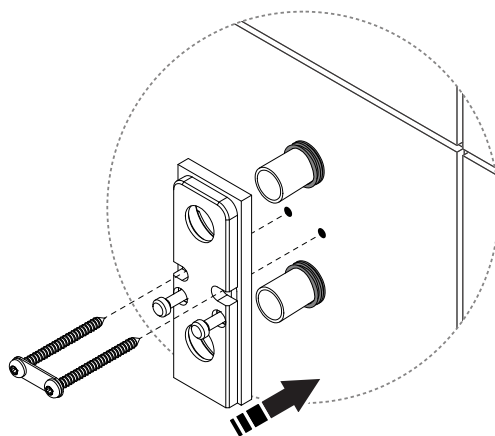


5.



CAUTION

Use 2x included screw, choose screw according to wall thickness.



x2

TX25 stainless steel screw

x1

Twin washer

6.



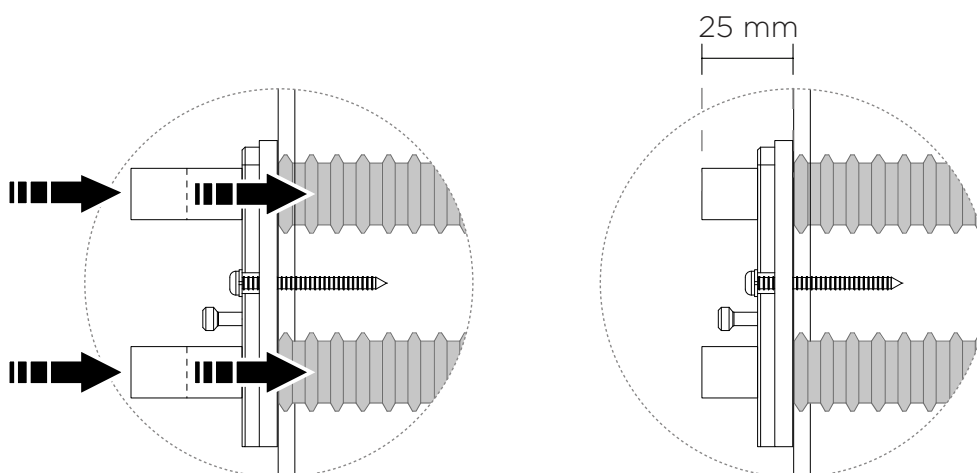
CAUTION

It's important that the PEX hoses are pushed in all the way to 'stop' before cutting to the correct length of 25 mm.

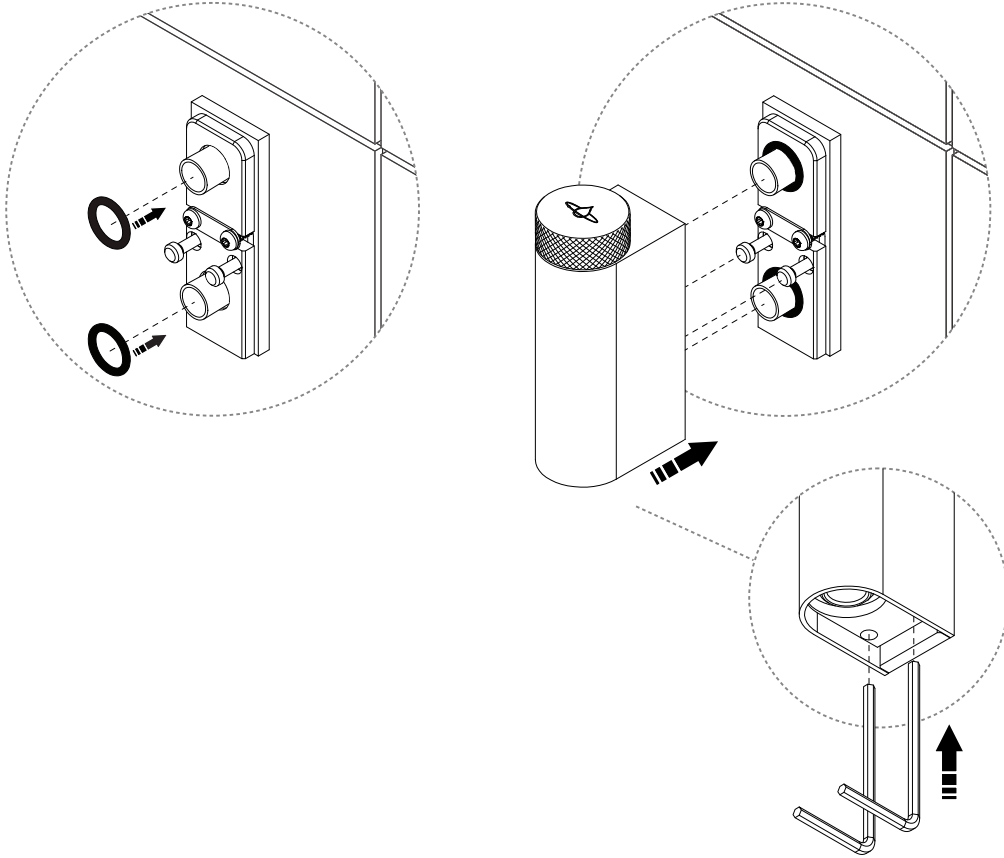


CAUTION

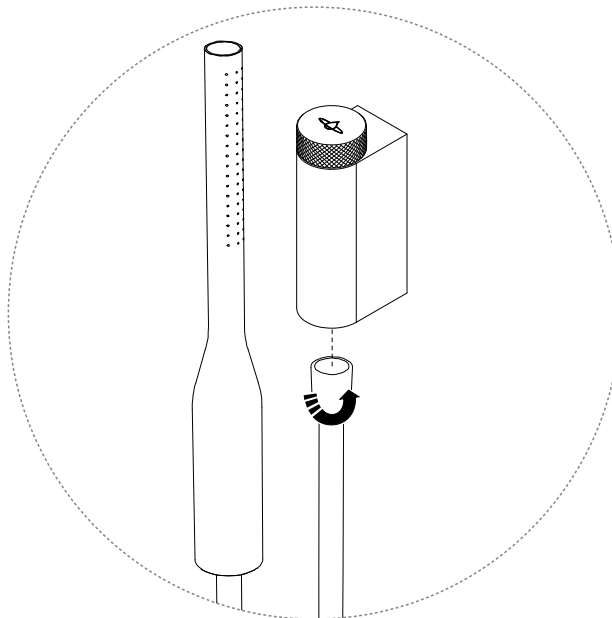
Make sure the pipe is cut straight and avoid too many degrees. A PEX pipe bevel tool is recommended to avoid damage to o-rings.



-
7. Use an Allen key, 3mm, to secure the Diverter Body to the Diverter Wall Plate.

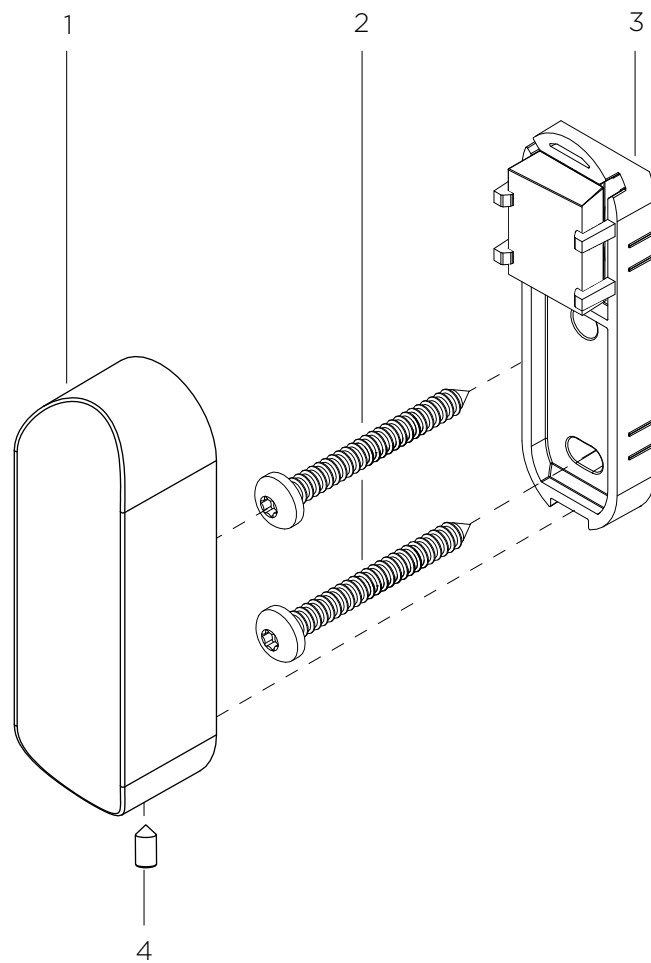


-
- 8.



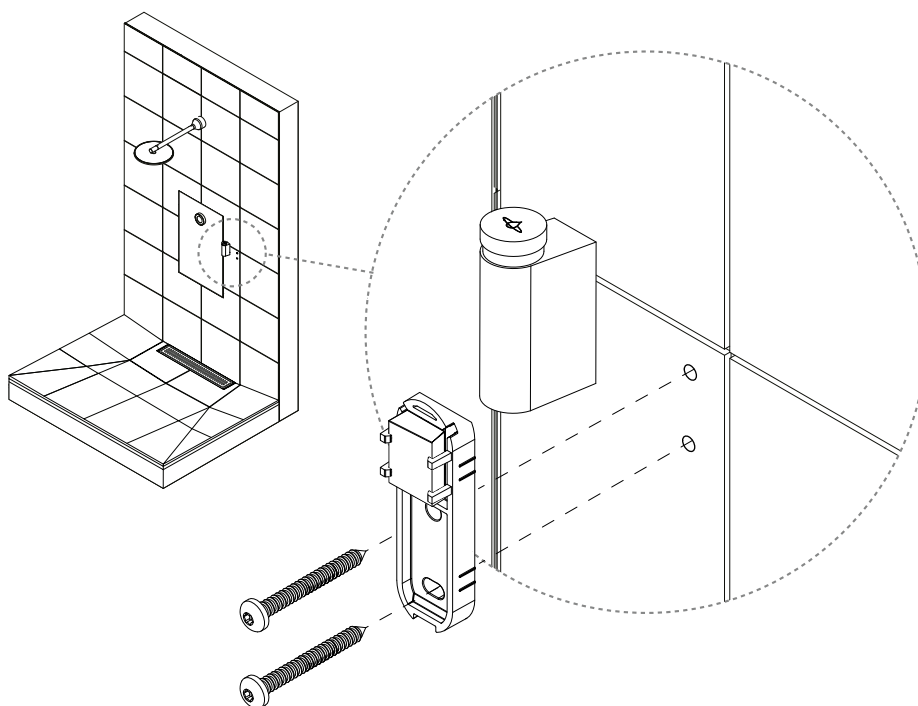
Installing the Hand Shower Holder

Component Overview



1. Hand Shower Cover
2. T25 stainless steel screw 50 mm (5.5 mm), x2
3. Hand Shower Bracket
4. M4 x 8 set screw

1.



x2

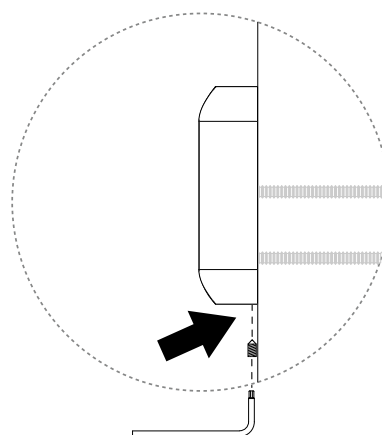
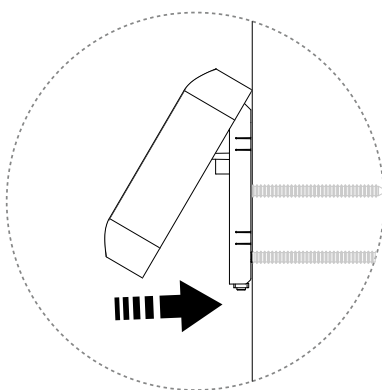
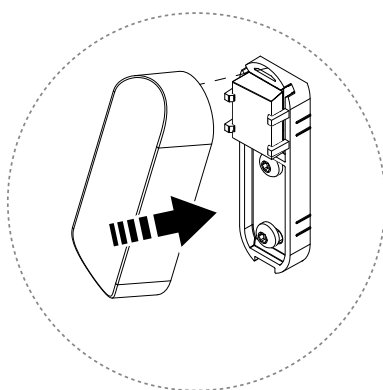
T25 stainless steel screw 50 mm (5.5mm)

2. Push Hand Shower Cover into position and use the Set Screw to lock it.

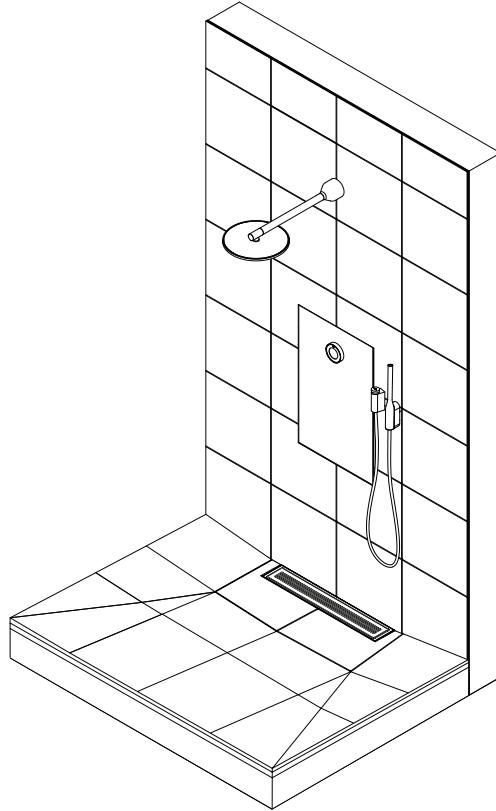


NOTICE

Use Torx T8 L key tool in kit



3. Hand Shower installation completed.



Shower Activation, Wi-Fi Setup and Installation test

To set up Wi-Fi and do an installation test on your Orbital Shower, please download **My Water by Orbital Systems** from App Store or Google Play and follow the instructions provided in the app.



Internet Connection is required

Password protected Wi-Fi 2,4 GHz / 5 GHz or Ethernet.

The installation kit contains components for either Wi-Fi connection OR Ethernet depending on what has been specified in the shower order.

ORBITAL



CERTIFIED SPACE TECHNOLOGY