



Technology Installation

Orbital Shower Cabinet R3 (OS8733-E)

5-06-0026

Publication date 2023-09-22

Copyright © 2023,Orbital Systems

All rights reserved. No part of this document may be reproduced or copied in any form or by any means without written permission from Orbital Systems. The English language version of this document contains the original instructions. All other language versions are translations of the original instructions.

Table of Contents

Thank you for your purchase	4
Prerequisites and Approvals	4
Warranty	5
Service	5
System Overview	6
Installation Overview	7
Installation System Requirements	7
Seal mountings in wet zone	8
Install Orbital Shower Unit	9
Install Sensor Cable, Flush Hose and Recirculation Hose	11
Install Sensor Tank Dock	13
Install Sensor Tank and Sensor Tank Lock	15
Install Funnel	17
Install Orbital Shower Core	18
Install Hose Connections	24
Add the Filter Capsule	26
Install Air Gap Tank Cover	28
Install Control Dial	29
Install Cabinet Frame	36
Install Splash Protection Sheet Set	37
Install Door	38
Next Step	39
Installing the Shower Head	40
Installing the Hand Shower	43
Installing the Diverter and Hand Shower	43
Installing the Hand Shower Holder	48
Shower Activation, Wi-Fi Setup and Installation test	51

Thank you for your purchase

This manual applies to model OS8733-E

 Read the Safety Guide before starting the installation or before operating the shower.

Thank you for purchasing the Orbital Shower from Orbital Systems. To enjoy the full potential of the shower please read and follow the procedures in this manual. Make sure that you fully understand how to operate this shower and make sure that it is properly maintained in accordance with the instructions given in this manual. Do not discard this manual, keep it handy for future reference. This manual is valid for all shower models. When applicable the manual will only be displaying the Orbital Systems Shower Head & Hand Shower variant.

Prerequisites and Approvals

Orbital Shower is designed and type approved according to the Swedish requirements in Swedish National Board of Housing and Building & Planning regulations (BBR). The system is type approved according to RiSE C900373 & C900374, Kiwa 1513; 0753 and Kiwa safety certificate K100686/02 and DVGW CERT W 540 AS-0605DO0262.

Orbital Shower is CE-marked based on certificate and test reports from third party labs.



If industry regulations and instructions in this manual are followed, Orbital Systems guarantees a functional shower system.

Warranty

For Warranty and Liability for Defects information, please visit Orbital Systems web <https://orbital-systems.se/terms-conditions>.



Service

Orbital Systems and our team of expert staff are available to assist you if you require product advice, experience any problems, need to purchase spare parts or to set up a service appointment.

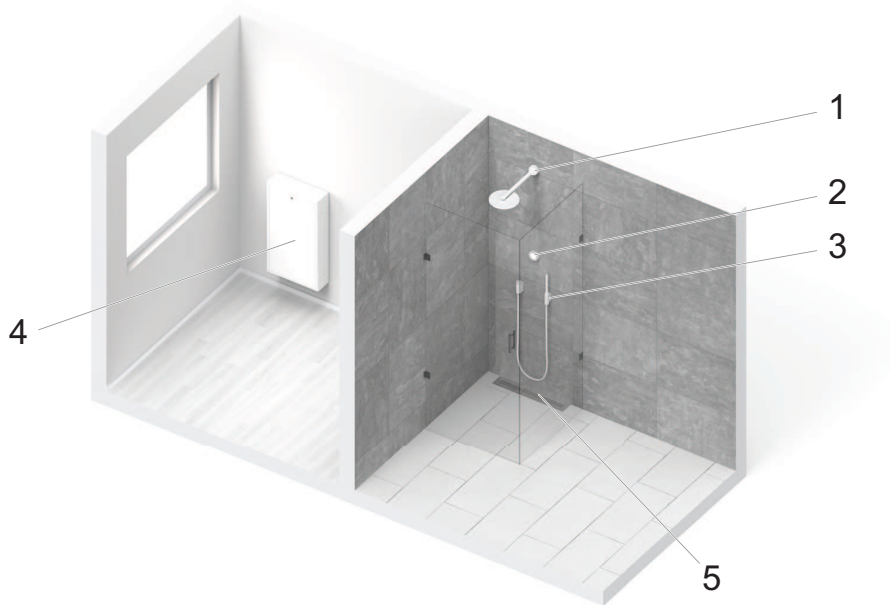
Repairs should only be carried out by Orbital Systems.

Contact us

- support@orbital-systems.com
- www.orbital-systems.com
- Europe: +46 (0)40 619 55 50

System Overview

Orbital Shower Cabinet R3 (OS8733-E)



1. Shower Head (optional)
2. Control Dial
3. Hand Shower Kit (Hand shower, Diverter and Holder) (optional)
4. Shower Unit (RSK 835 91 20) and Cabinet (RSK 205 50 28), located outside the shower area, or in an adjacent room
5. Drain Unit (RSK 711 54 63) and Outlet unit (RSK 711 99 33)

Preparation and installation of shower area (including piping, connections, water proofing and tiling), installation of cabinet (4) and drain (5) are included in the Fixture installation manual.

Installation of the Shower unit (4), Control dial (2), Shower head (1) and Hand shower kit (3) are included in the Technology installation manual. Operation of the shower is included in the User Guide.

Installation Overview

Installation System Requirements

Connectivity

Internet connection: Password protected Wi-Fi 2,4 GHz / 5 GHz or Ethernet.

The installation kit contains components for either Wi-Fi connection OR Ethernet depending on what has been specified in the shower order.

Electrical Supply

Residual circuit breaker: One breaker per Shower Core

Power supply: One Phase, 230VAC / 50 Hz / 16A

Mains supply wire: Min. 2.5 mm² (rated for 16A circuit)

Plumbing / Water

Incoming tap water supply connections: Separate hot and cold, 2x female G 1/2" swivel nut.

Incoming cold water temp. (min-max): 4-25°C

Incoming hot water temp. (min-max): 50-65°C

Maximum working pressure tap water: PN10

Incoming water pressure (min-max): 2-10 bar

The supply pressure is the fundamental requirement for the shower flow:

- 2 bar: 7.5 litres/min
- 3 bar: 9.5 litres/min
- 4 bar: 11 litres/min

Recommended water supply flow: 9 litres/minute per inlet hot and cold

Water hardness (min-max): Required: 3°dH-10°dH

Recommended: 6°dH-10°dH (or a total hardness of 110-180mg CaCO₃/litre)

Water iron content: <0,3mg/litre

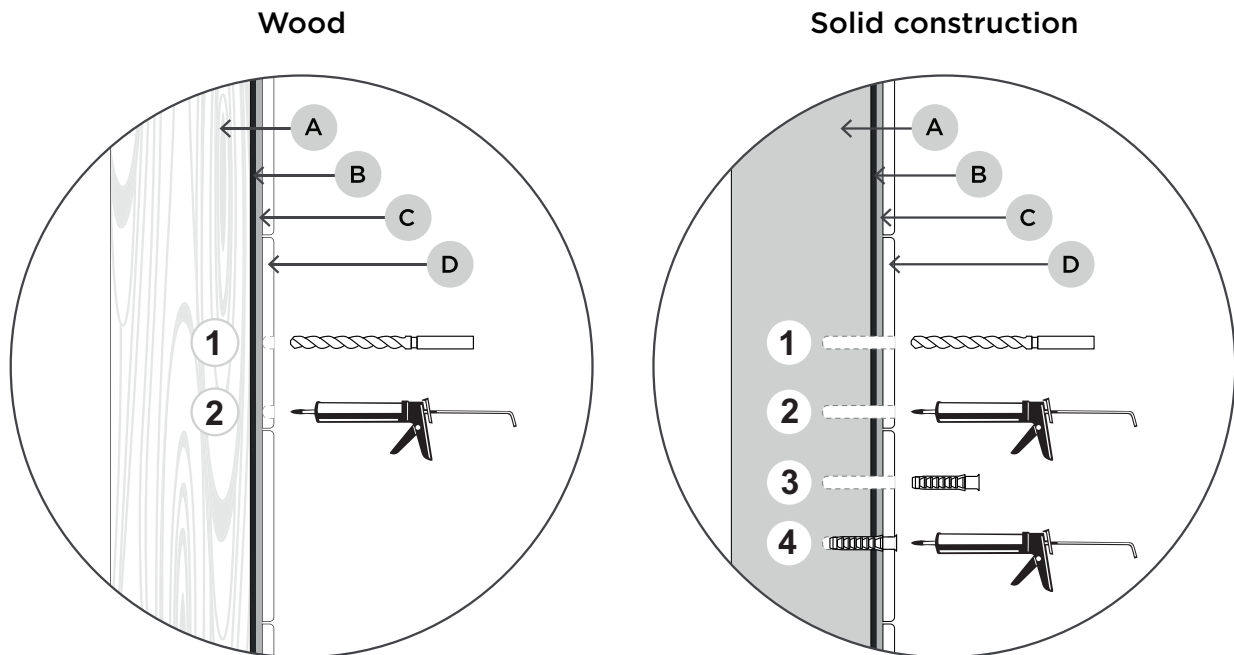
Seal mountings in wet zone



CAUTION

For installation in Sweden according to current Industry Rules Safe Water Installation. All mountings in the wet zone must be sealed against the water-proofing layer of the wall or floor. Material for sealing must adhere to the substrate and be water-resistant, mold-resistant and aging-resistant.

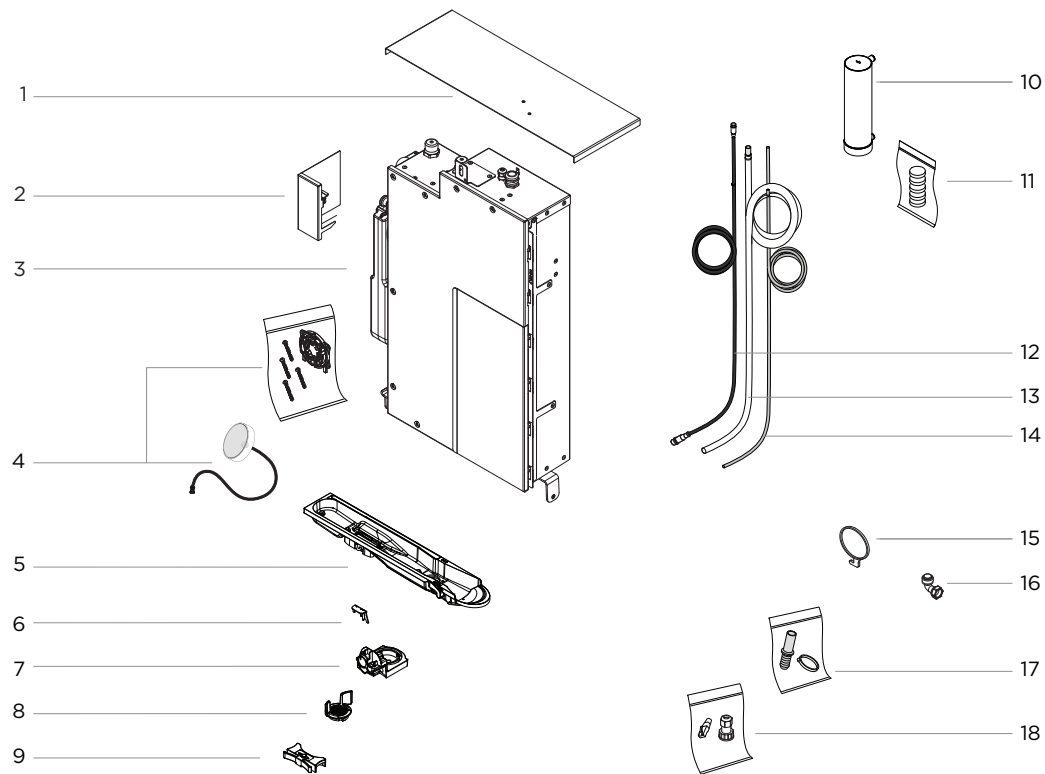
Seal the drill holes according to industry rules.



- **A:** Wood / Concrete
- **B:** Waterproofing membrane
- **C:** Tile adhesive
- **D:** Tile

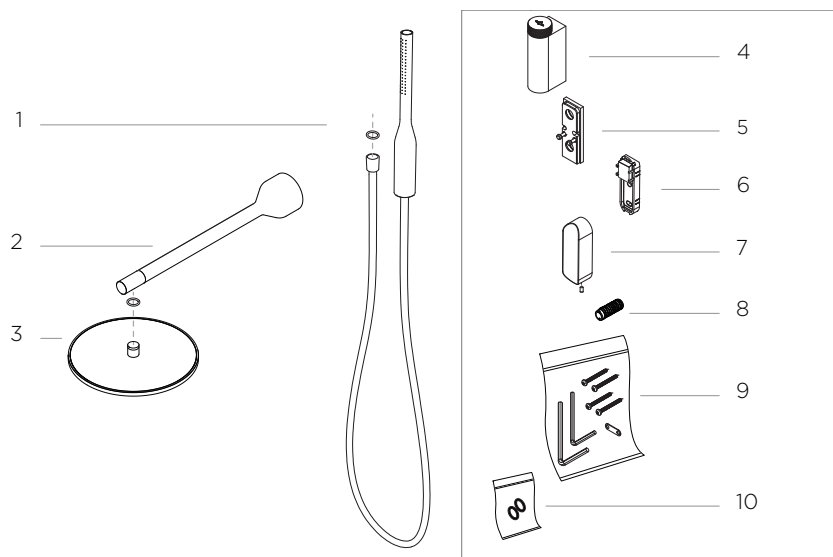
Install Orbital Shower Unit

Component Overview Technology kit Core components and Door



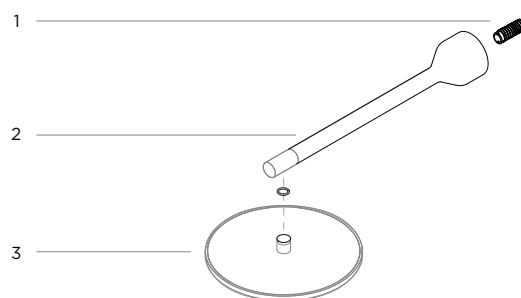
1. Top Cover, 1x
2. Air Gap Tank Cover, 1x
3. Orbital Shower Core, 1x
4. Control Dial , 1x (incl fixture 1x, screws 4x and plug 4x)
5. Sensor tank, 1x
6. Clip, 1x
7. Sensor Tank Dock, 1x
8. Sensor Tank Lock, 1x
9. Spring Lock, 1x
10. Filter capsule, 1x
11. Cleaning tablets, 1x
12. Sensor cable, 1x
13. Recirculation hose, 1x
14. Flush hose, 1x
15. Grating tool, 1x
16. Hose connection, 1x
17. Recirculation + Flush Hose kit, 1x
18. Ethernet kit, 1x

Component Overview Technology kit Shower heads & diverter



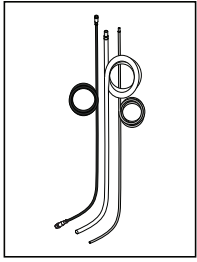
1. Hand shower with hose, 1x
2. Head shower arm, 1x
3. Head shower, 1x
4. Diverter body, 1x
5. Diverter wall plate, 1x
6. Hand shower holder, 1x
7. Hand shower holder cover, 1x + set screw, 1x
8. Threaded adapter, 1x
9. Screw and tool kit, 1x
10. O-ring kit, 1x

Component Overview Technology kit Shower heads

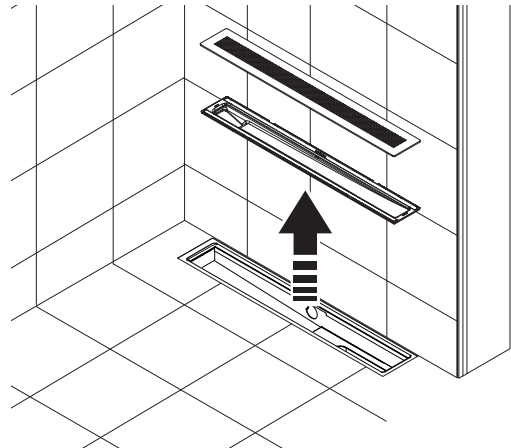
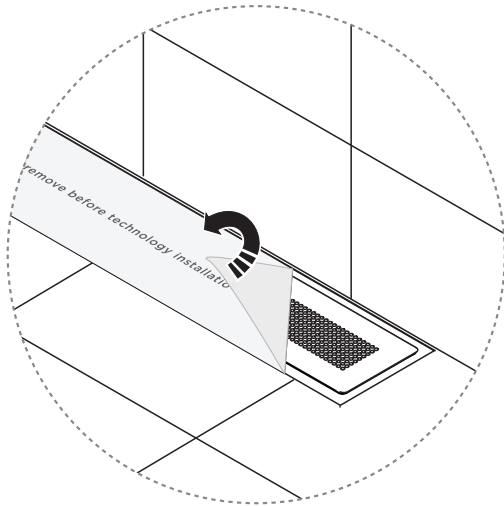


1. Threaded adapter, 1x
2. Head shower arm, 1x
3. Head shower, 1x

Install Sensor Cable, Flush Hose and Recirculation Hose



1.

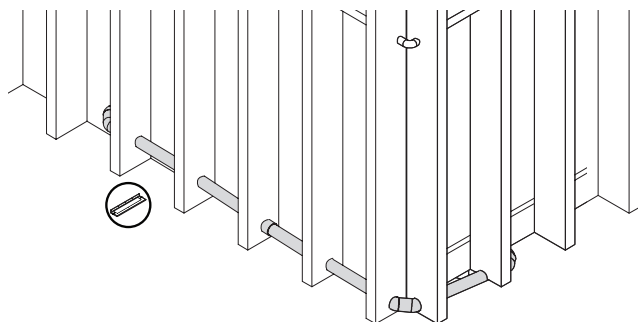
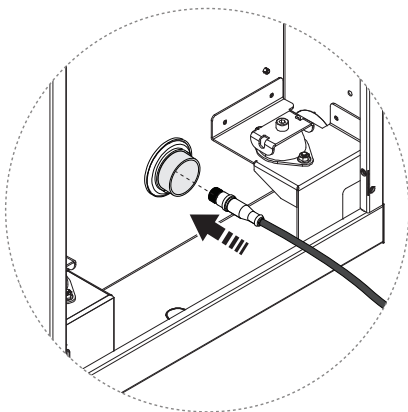


2. Install Sensor Cable, Flush Hose and Recirculation Hose. Make sure the Sensor Cable goes first and that connector protection cover is on.

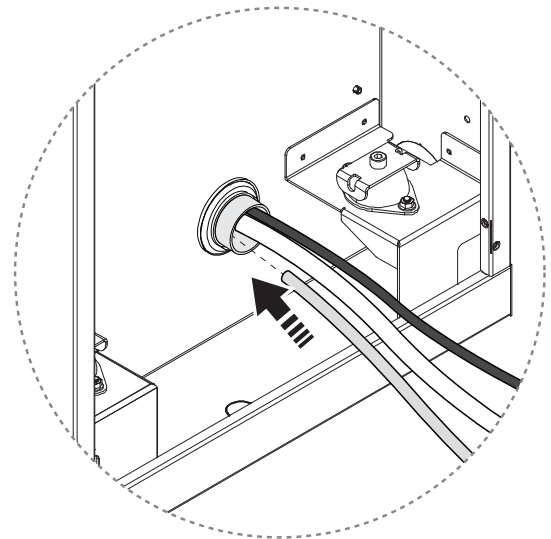
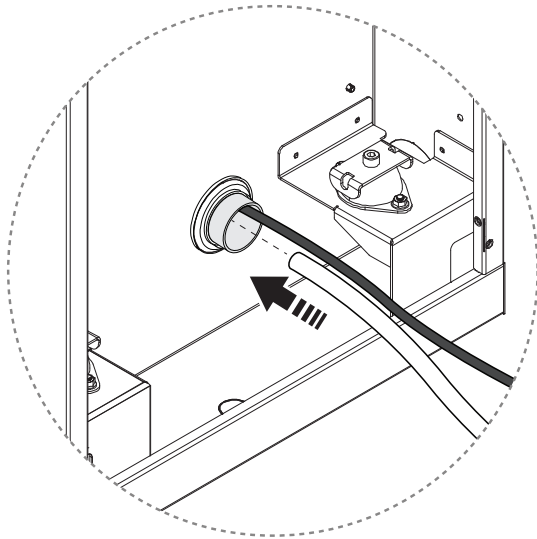


NOTICE

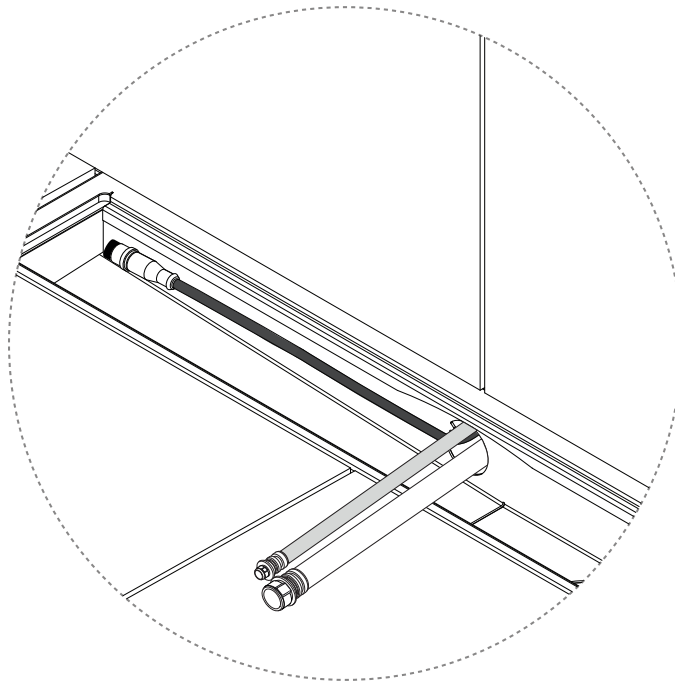
It is recommended to use fish tape to route the cables through the pipes.



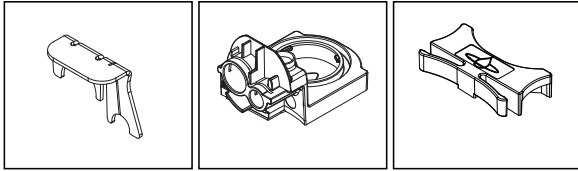
3.




4. Pull the Sensor Cable to where 20 cm of slack is visible.

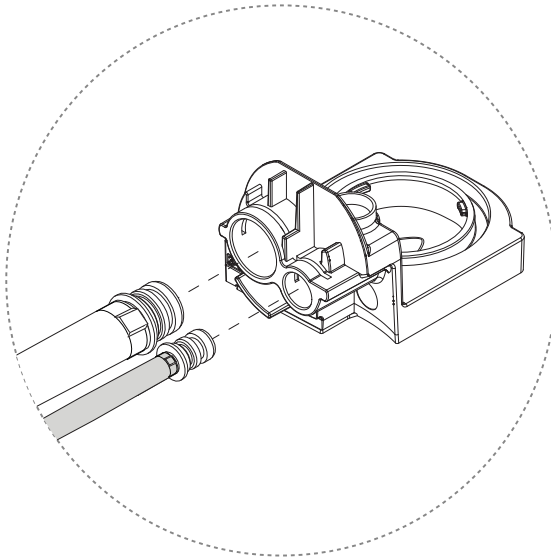


Install Sensor Tank Dock

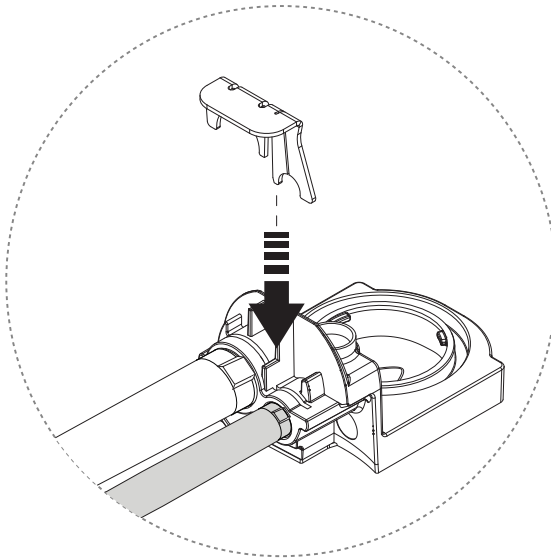


- 1.  NOTICE**
Apply lubricant according to industry rules. Make sure that the o-rings are lubricated.

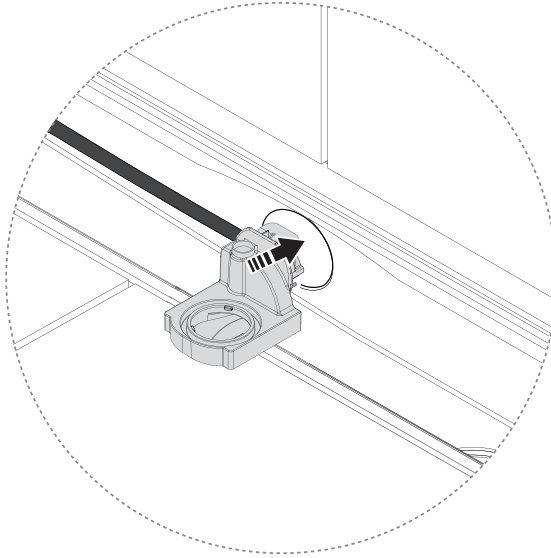
Connect Hoses to Sensor Tank Dock.



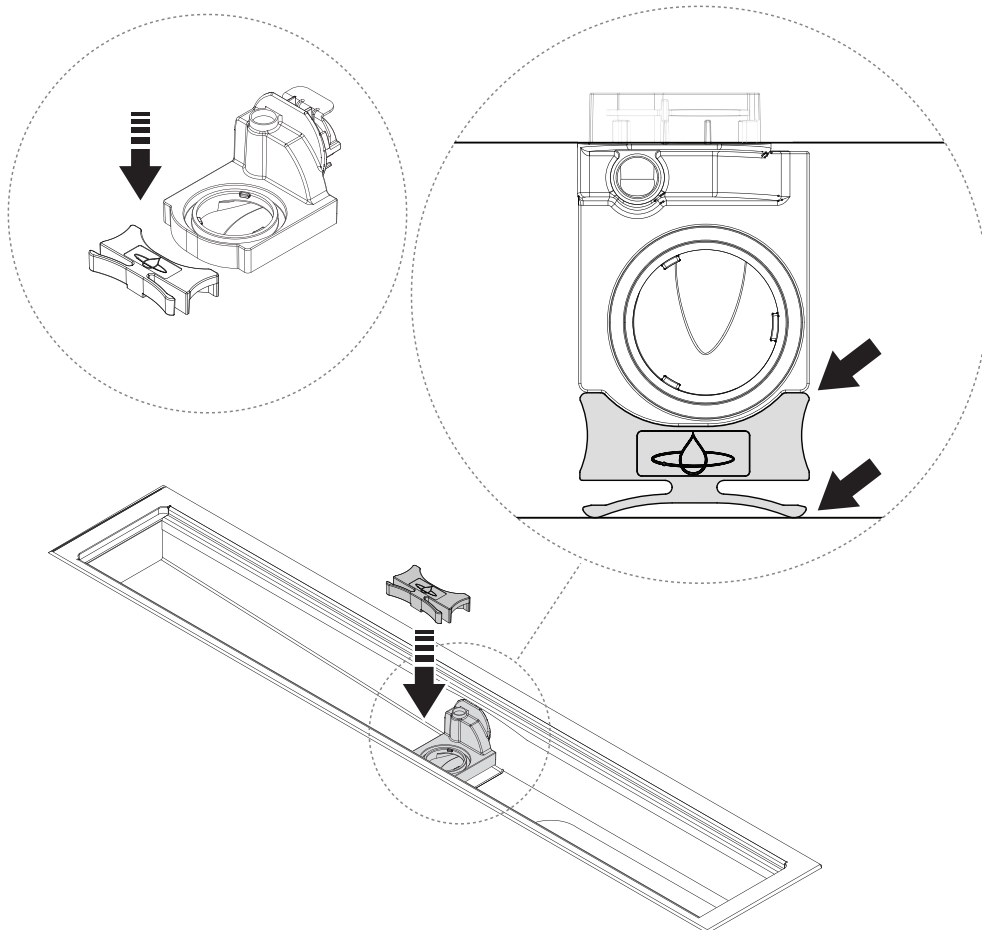
- 2.** Lock Hoses by inserting Clip.



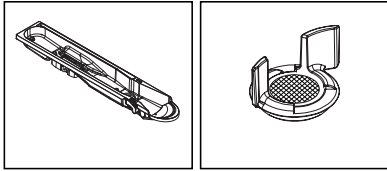
-
- 3.** Insert Sensor Tank Dock into Connection Pipe. Push it all the way in.



-
- 4.** Lock Sensor Tank Dock in place with the Spring Lock.



Install Sensor Tank and Sensor Tank Lock

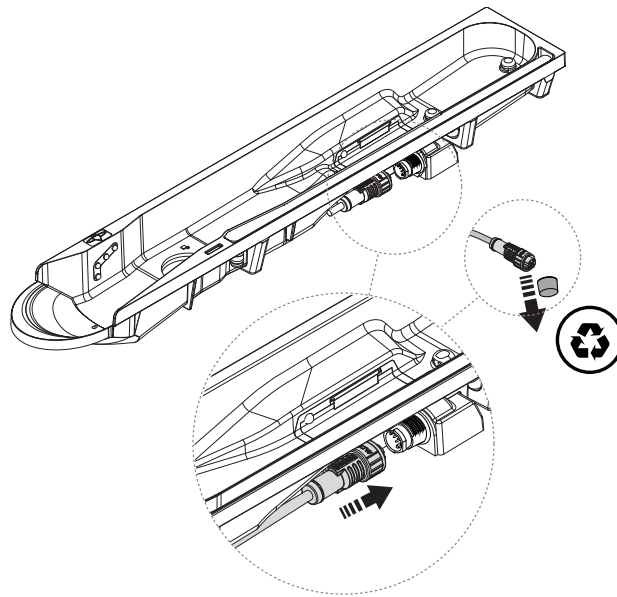


1. Connect the Sensor Cable to the Sensor Tank.

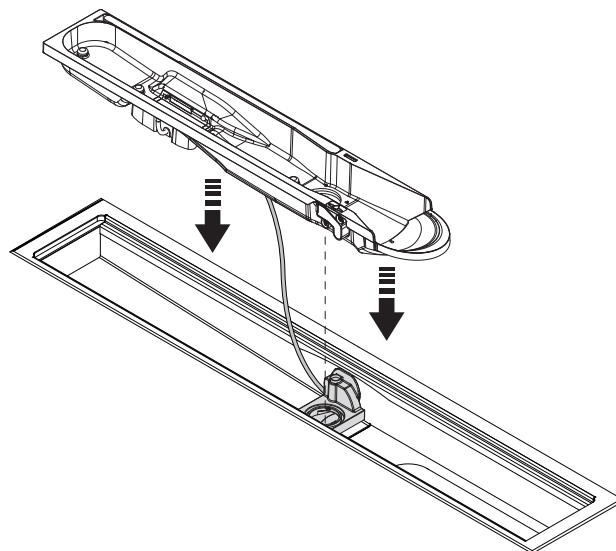


CAUTION

Make sure to have correct alignment between key and slot in connectors by aligning the two white lines.



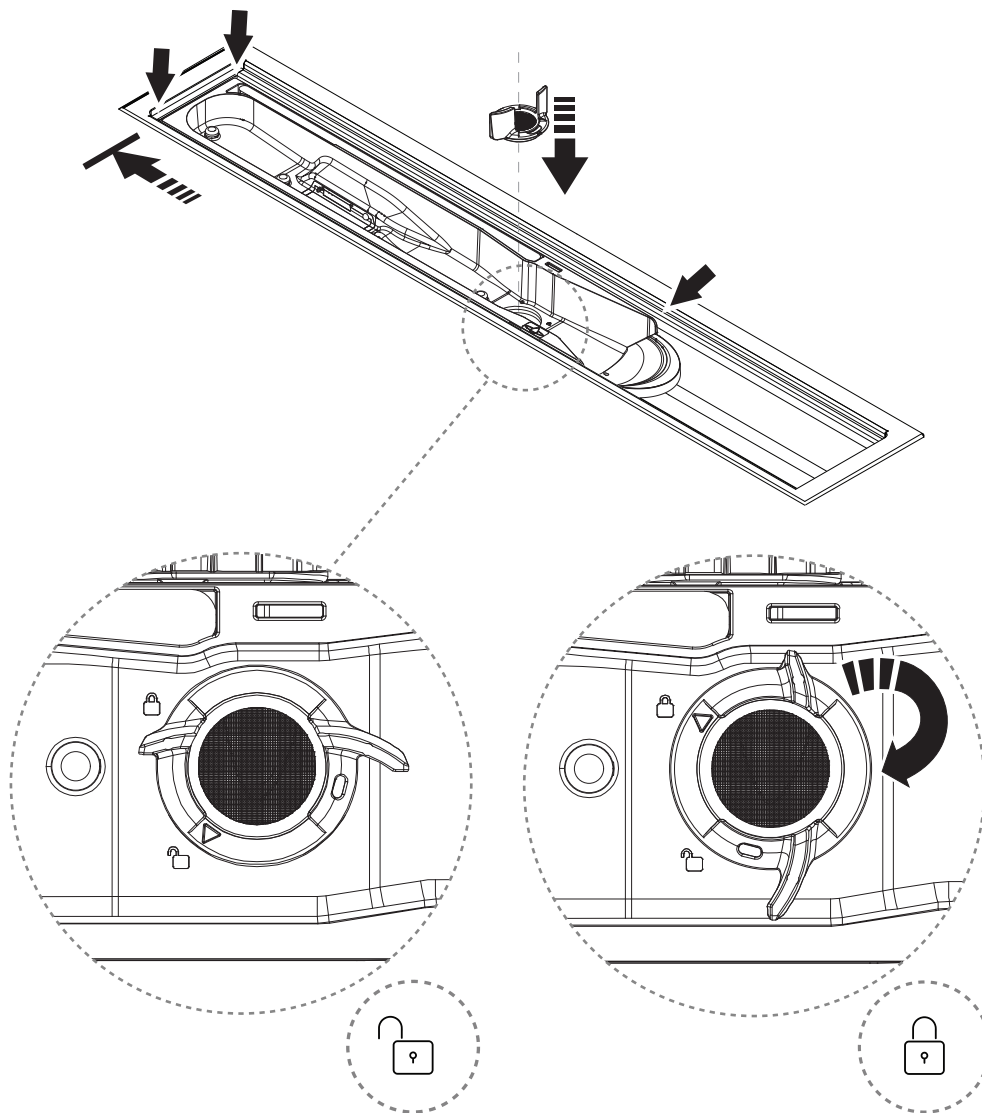
2. Insert Sensor Tank.



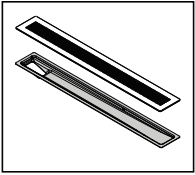
3. Lock the Sensor Tank in position with the Sensor Tank Lock by turning it 90 degrees.

**CAUTION**

Make sure Sensor Tank is inserted correctly. The edge of the Sensor Tank should be fully pushed towards and in level with the edge of the Drain Unit.

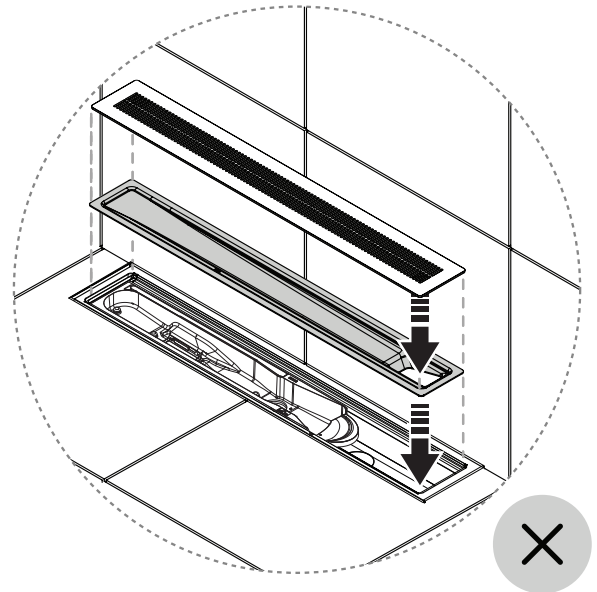
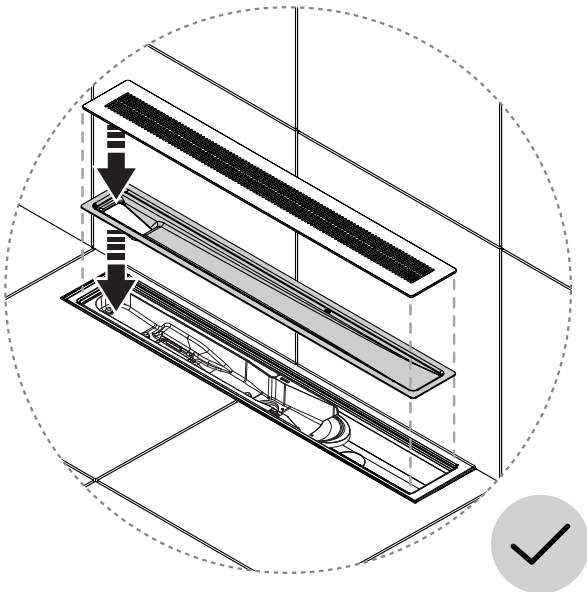


Install Funnel

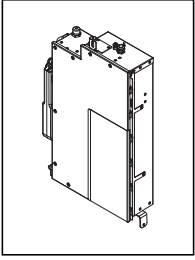


NOTICE

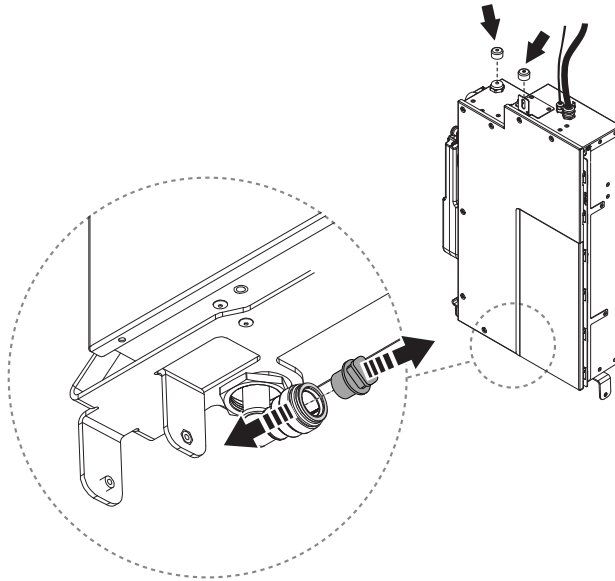
Place the Funnel with the hole oriented to the left! Placing the hole oriented to the right will disable recirculation.



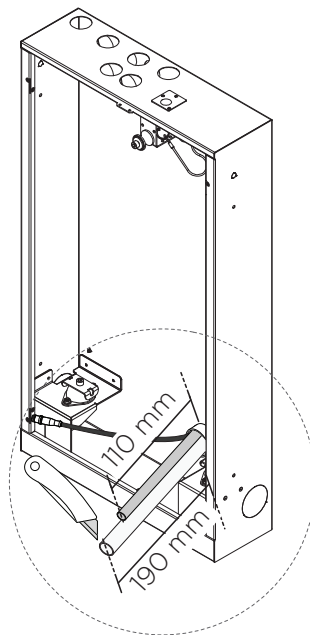
Install Orbital Shower Core



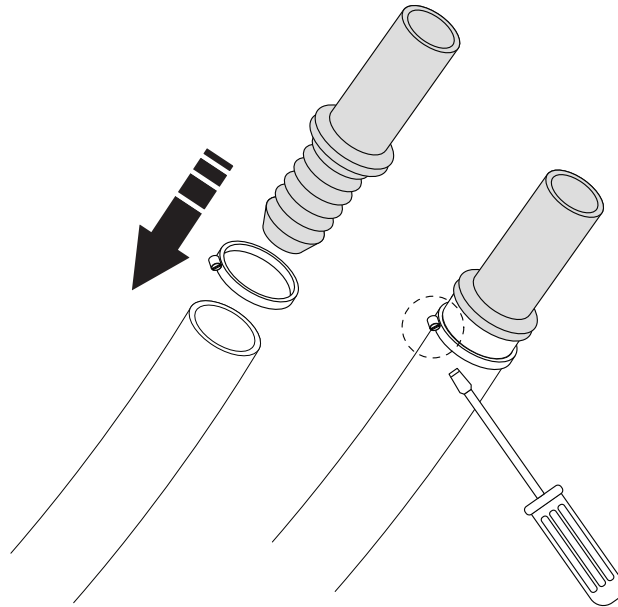
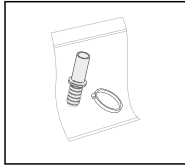
1. Remove transport plugs before installation.



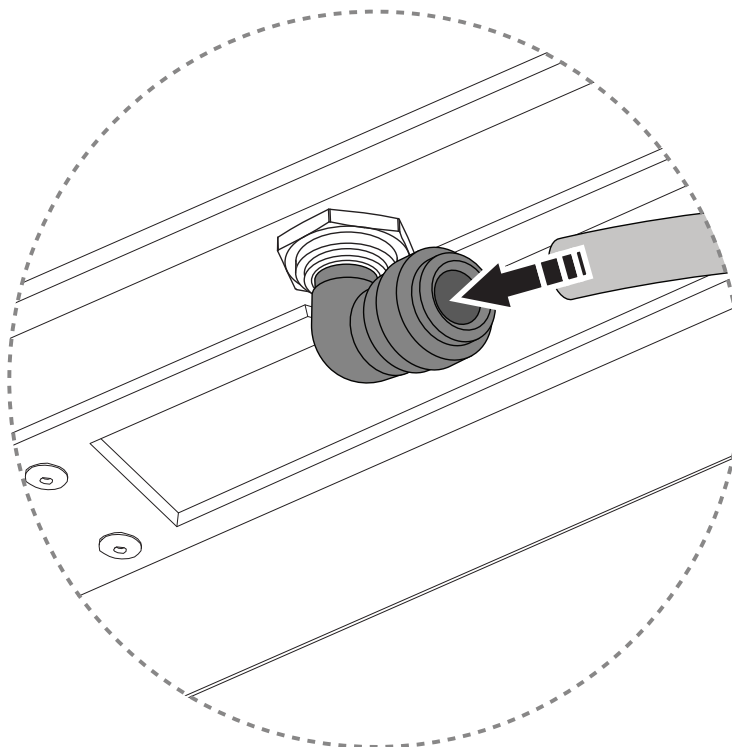
- 2.



3.



4.

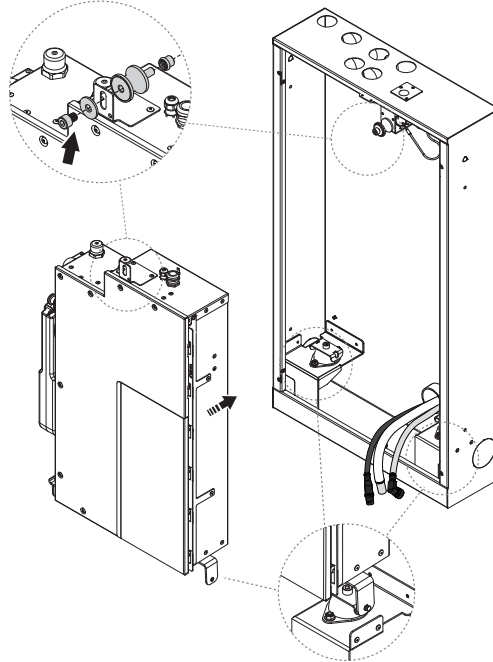


-
5. Insert Orbital Shower Core into the Core Cabinet and attach the Safety Wire. Keep tilted to enable electrical installation.

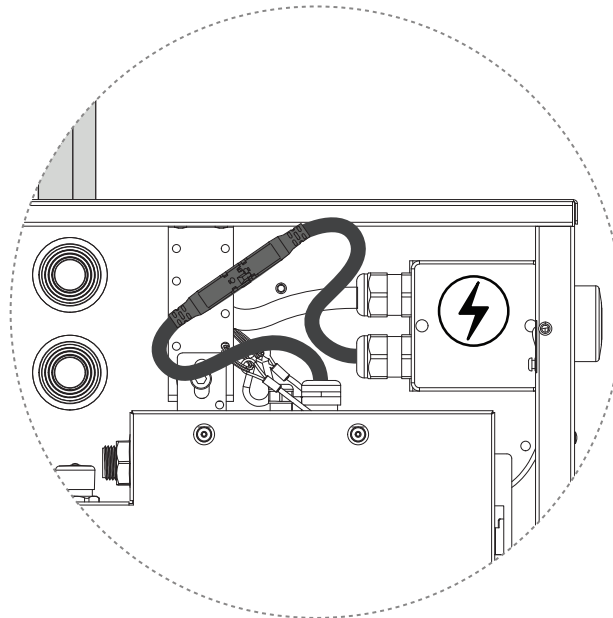


CAUTION

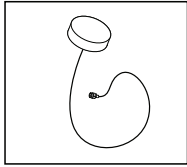
- Heavy equipment. Orbital Shower Core weighs approx. 25 kg.
- Make sure Hoses and Cables are not pinched.



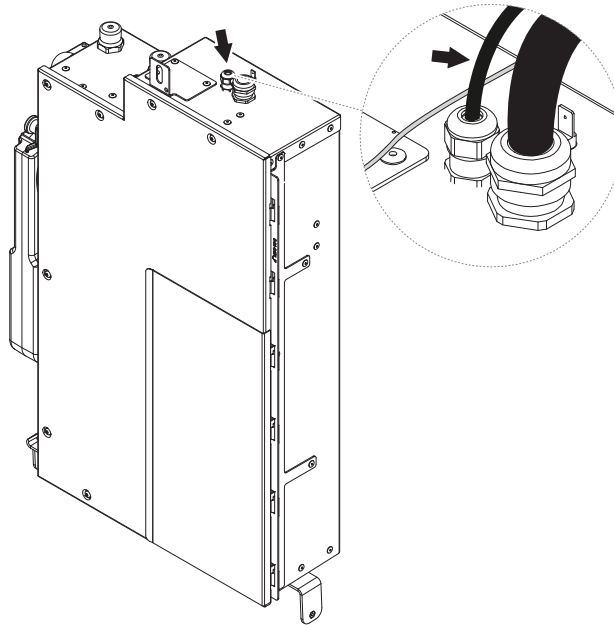
6.



7.



Connect the Wifi Antenna Cable.

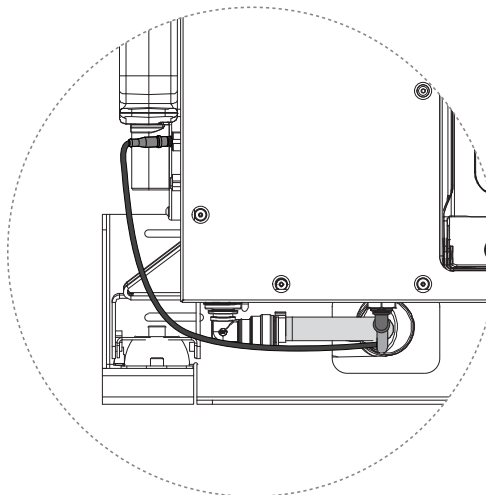


8.

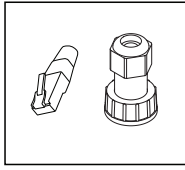


CAUTION

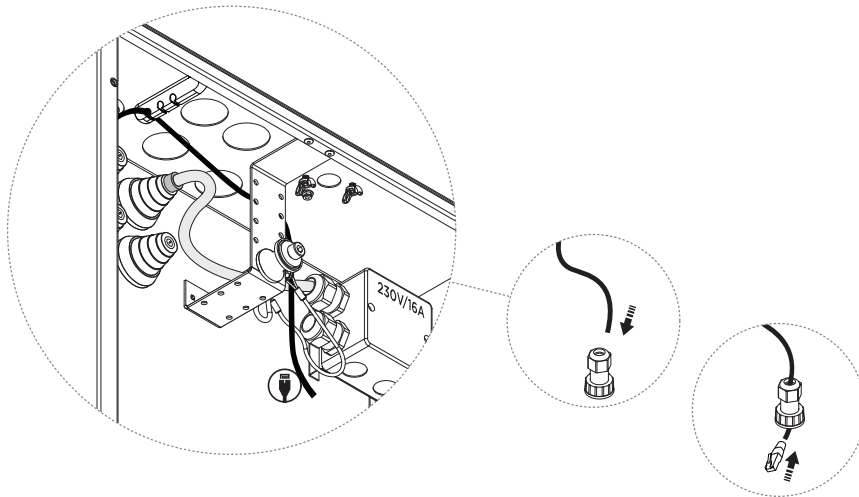
Make sure to have correct alignment between key and slot in connectors.
Make sure locking ring snaps and connector is locked.



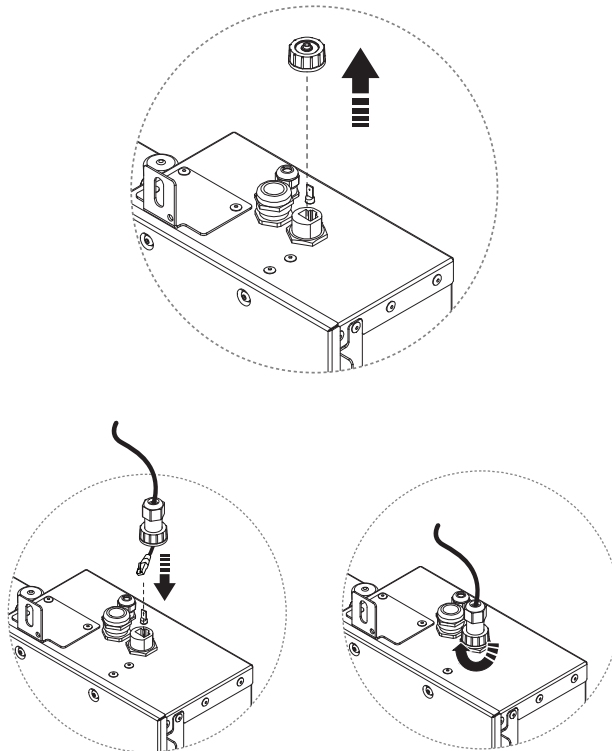
9. Only valid for Orbital Ethernet installation



Pull Ethernet cable through the cable connector and attach the RJ45 connector.

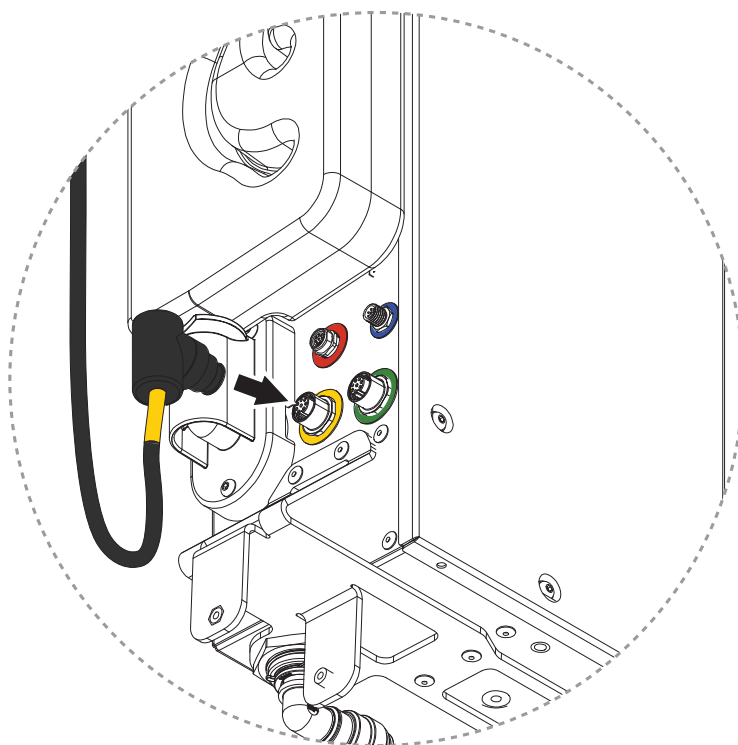


10. Hand tighten cable connectors to avoid damage.

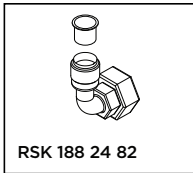


11. Only valid for Orbital Audio Installation

Connect the amplifier cable to the core.



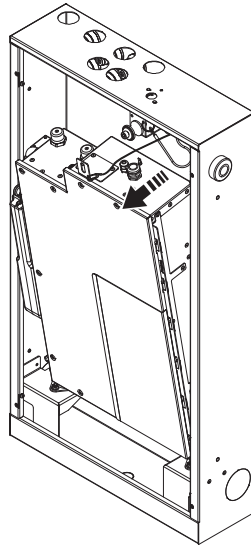
Install Hose Connections



Provided by Customer:

- Hose Connections, x2

1.

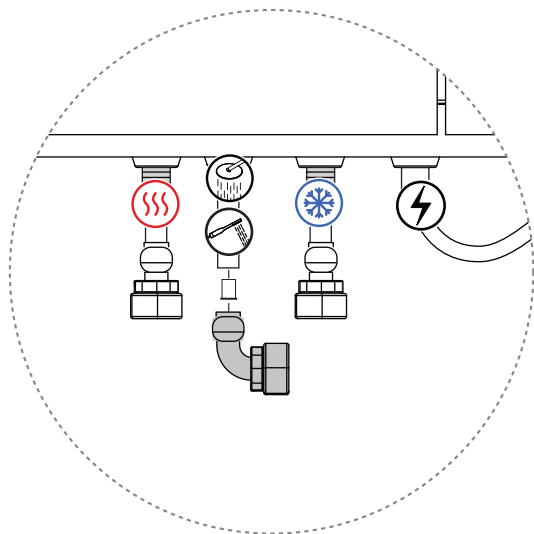
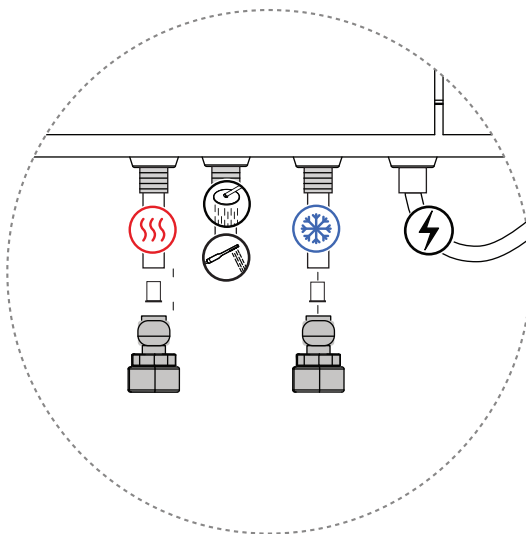


2.

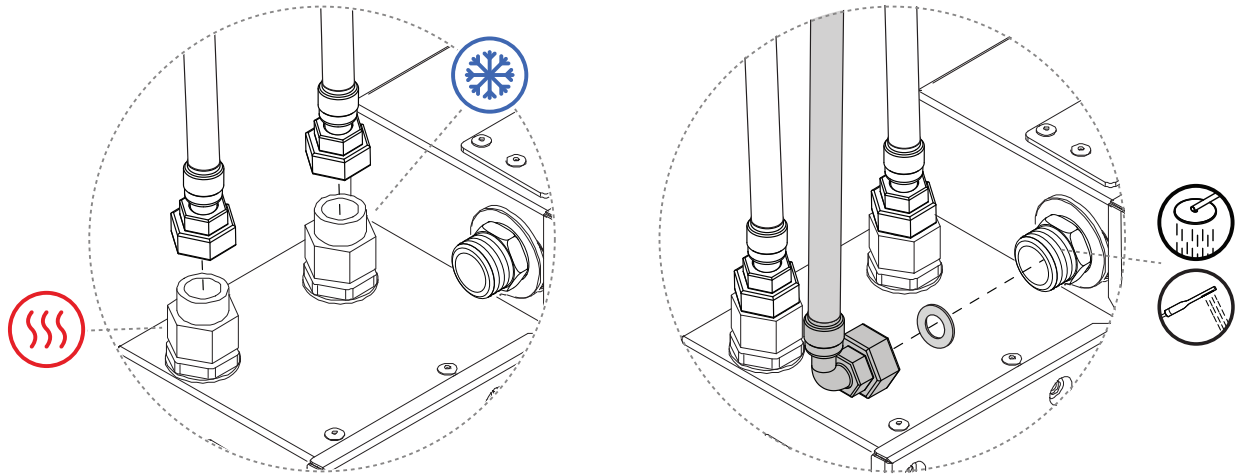


CAUTION

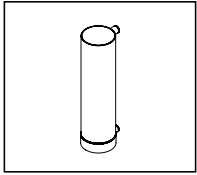
- Install Hose Connections according to industry rules.
- Make sure to flush out the water lines from debris before connecting the Core.



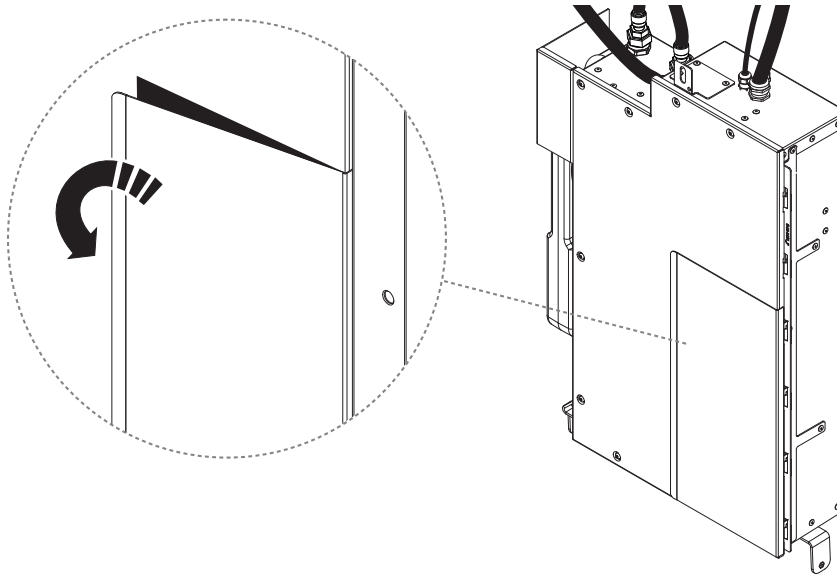
3. Connect incoming and outgoing water to the core.



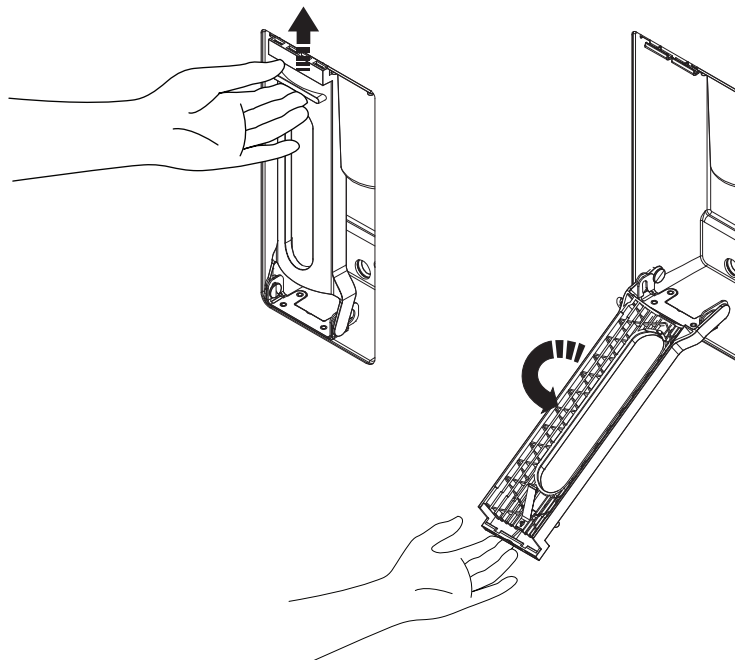
Add the Filter Capsule



1.



2.

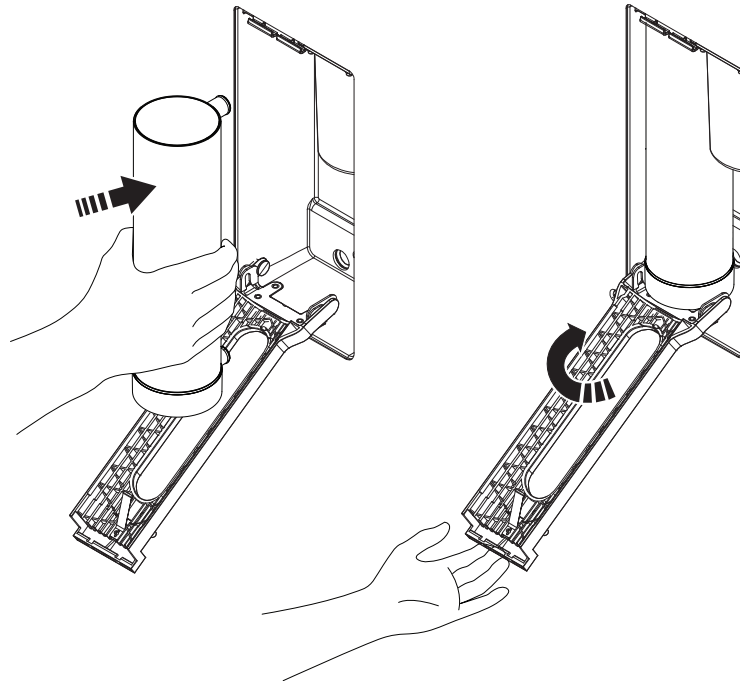


3. Insert Filter Capsule.

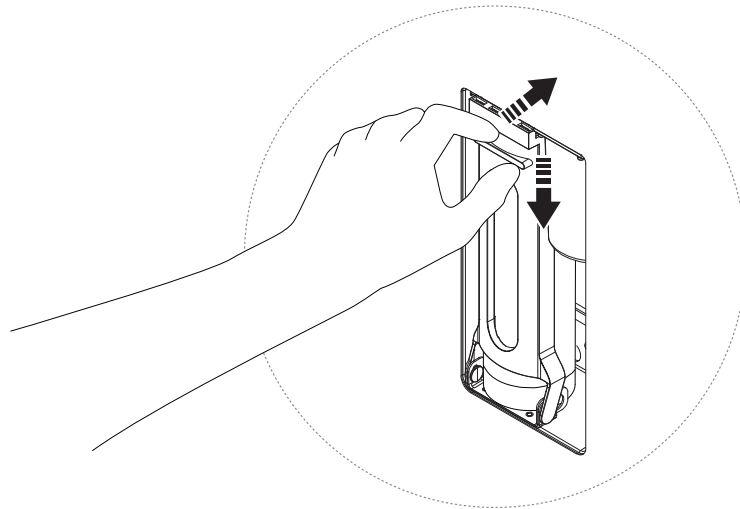


RISK OF LEAKAGE

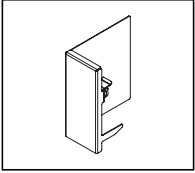
Make sure Filter Capsule is inserted all the way in or leakage may occur.



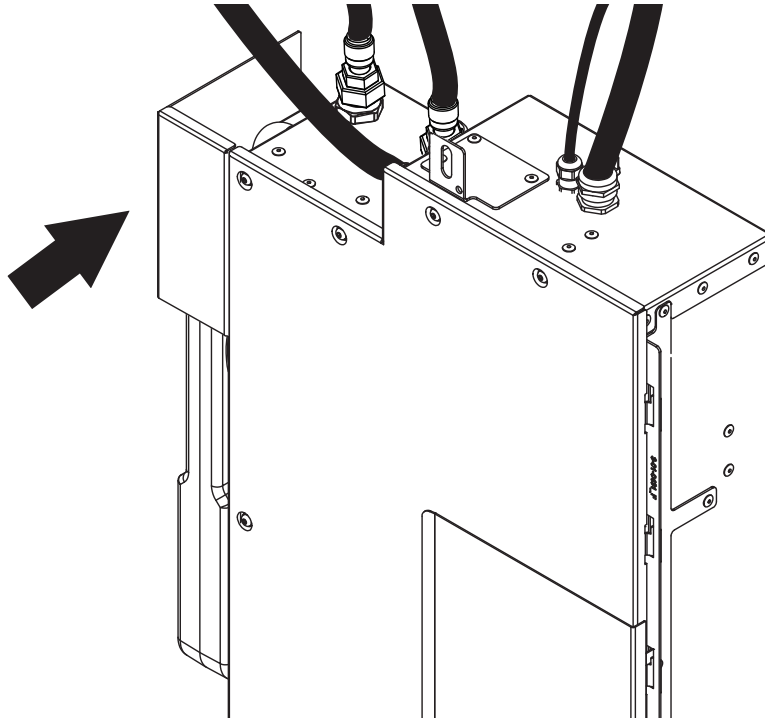
4. "Click!"



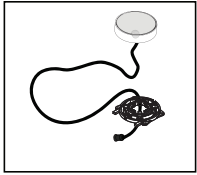
Install Air Gap Tank Cover



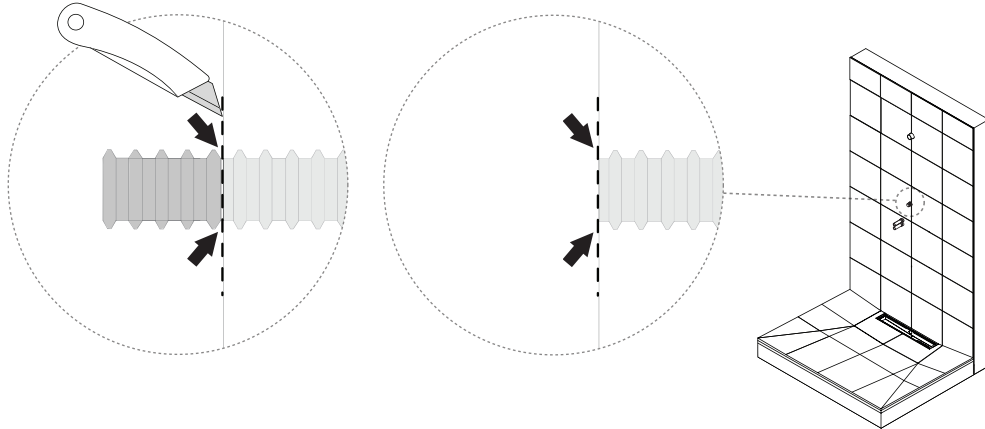
Attach the Cover to the Air Gap Tank by snapping it onto the magnetic plate.



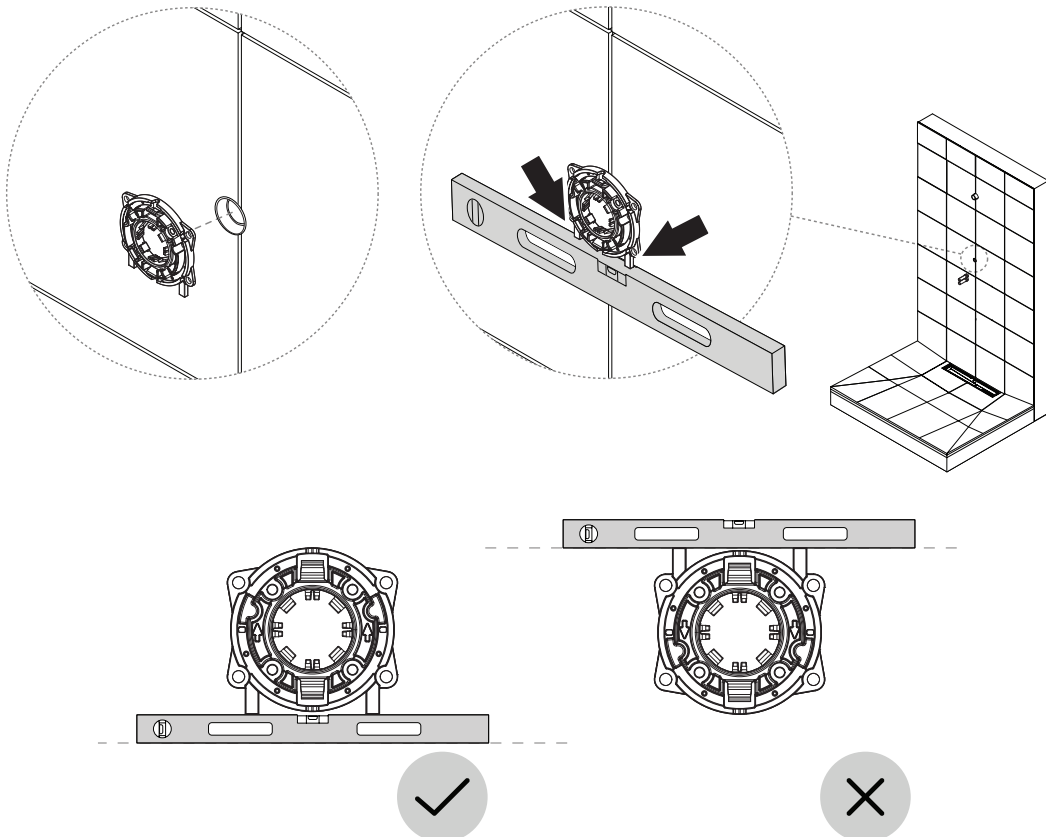
Install Control Dial



1. Cut Conduit flush to tile surface.



2. Level the Fixture and make sure it is centered on the hole of the wall.



-
3. Drill 4 holes (4,0 mm) in marked locations. Make sure that it is the outer holes in the fixture that is used.



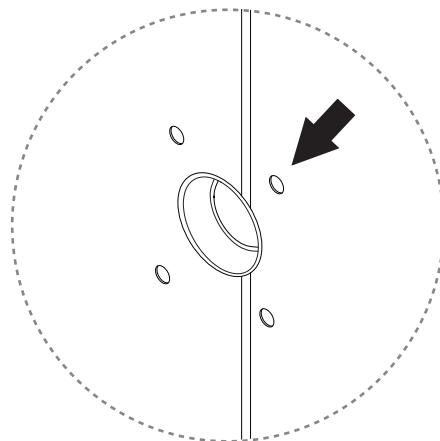
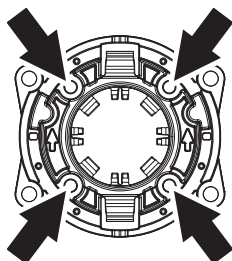
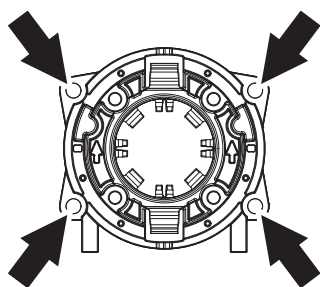
CAUTION

Only drill through the tile itself, no deeper.

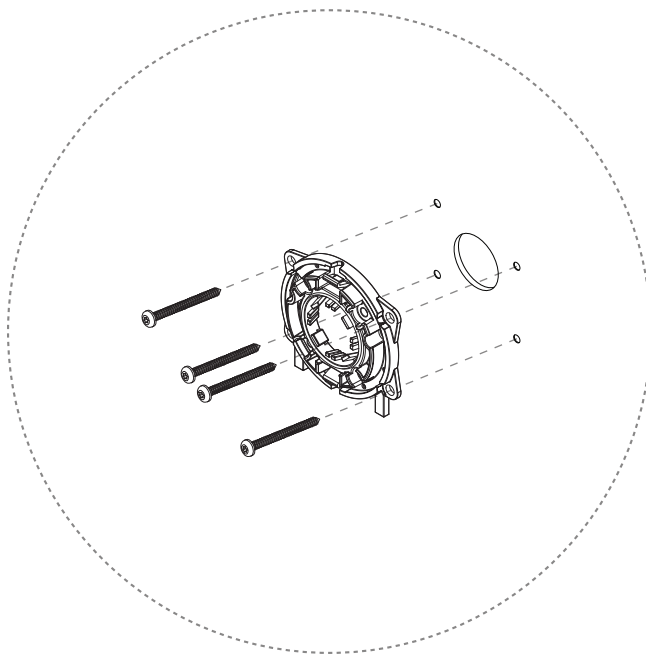


CAUTION

Seal drill holes according to industry rules. See section [Seal mountings in wet zone \[8\]](#) for instruction.



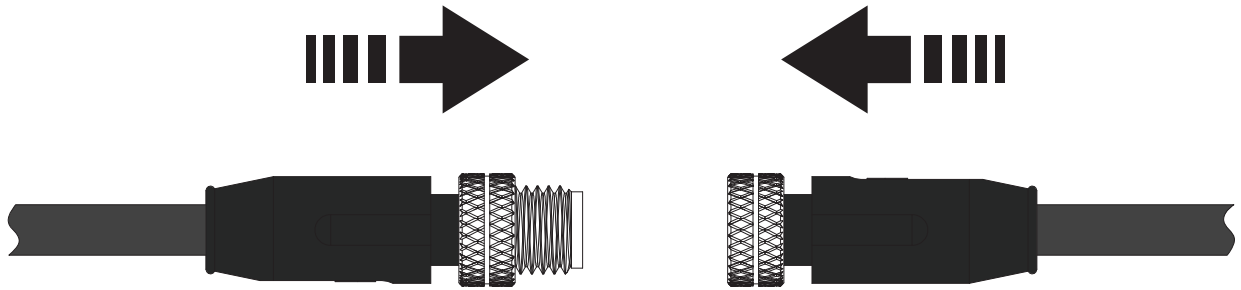
4.




x4

TX screw A4 (38 mm)

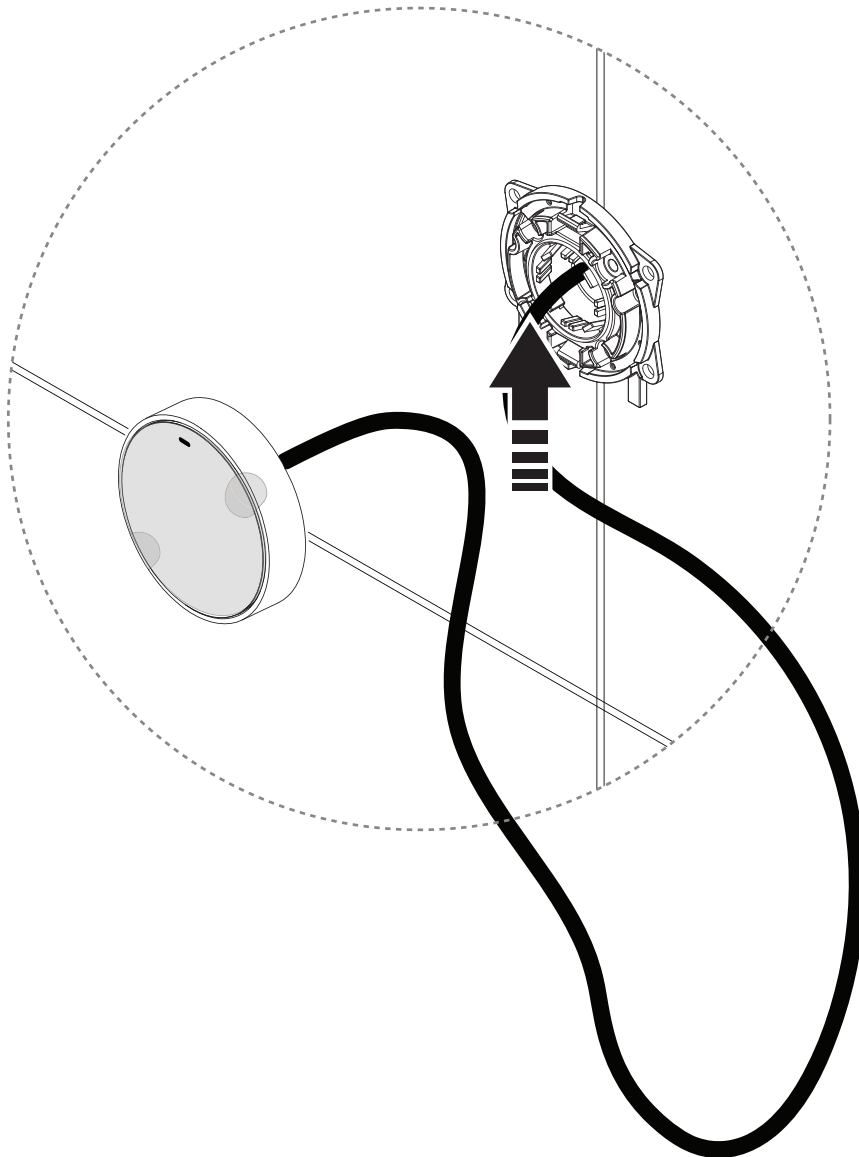
-
5. Connect the Control Dial cable to the extension cord.



-
6. 

NOTICE

Do not remove the protective cover from the Control Dial until installation is completed.

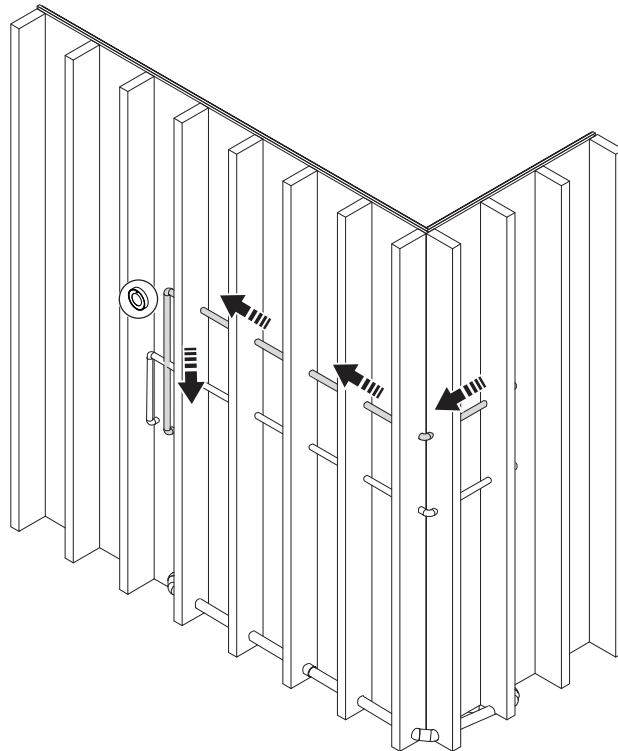


7. Pull the Cable through the Conduit.

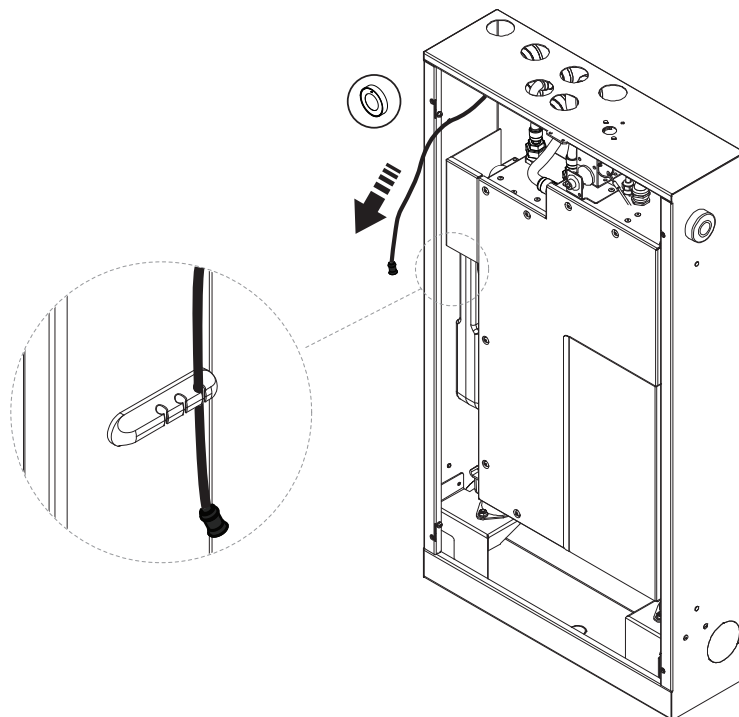


NOTICE

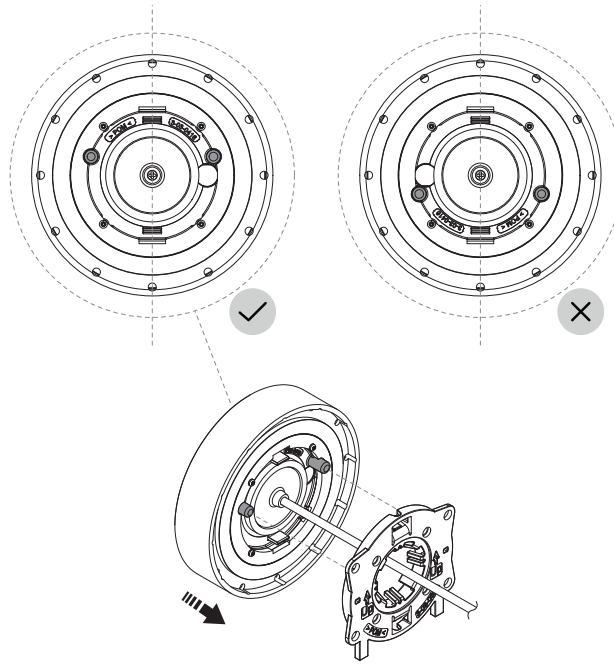
It is recommended to use fish tape to route the cables through the pipes.



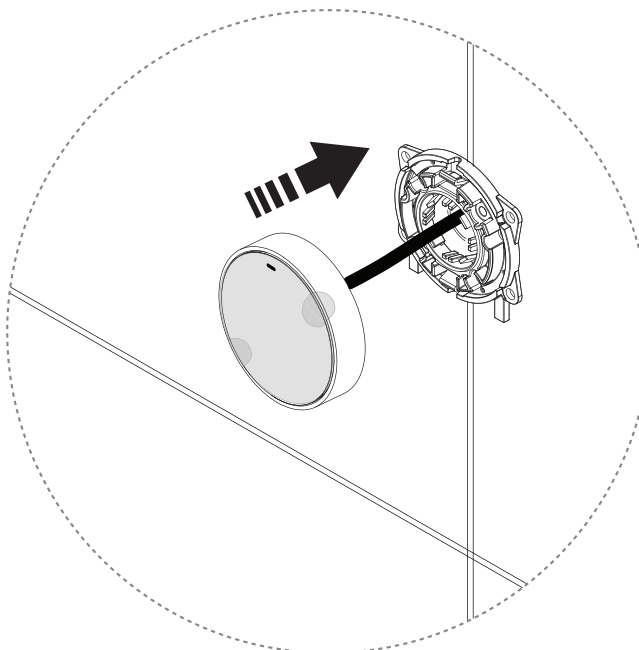
8.



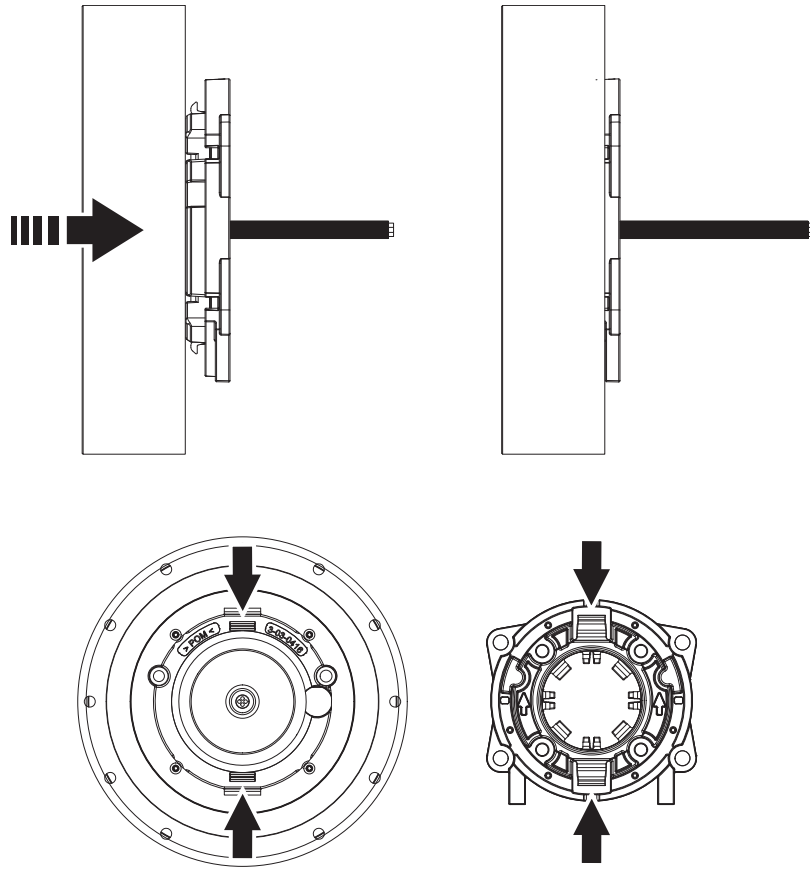
9. Position the Control Dial according to the “up marking” before assembly.




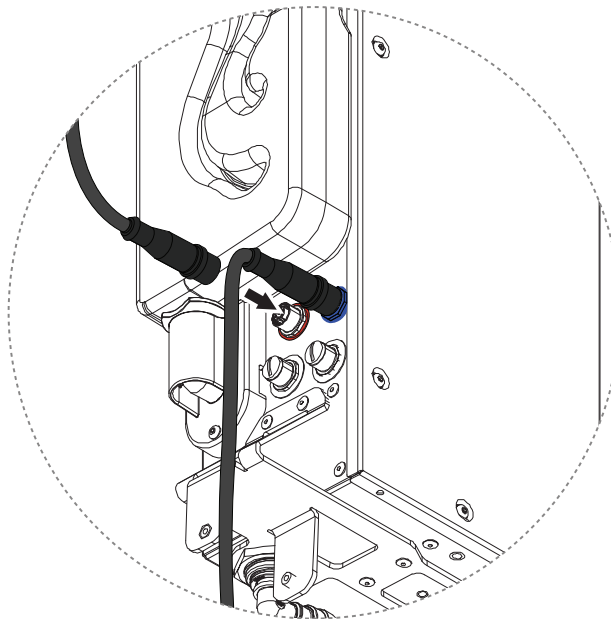
10.



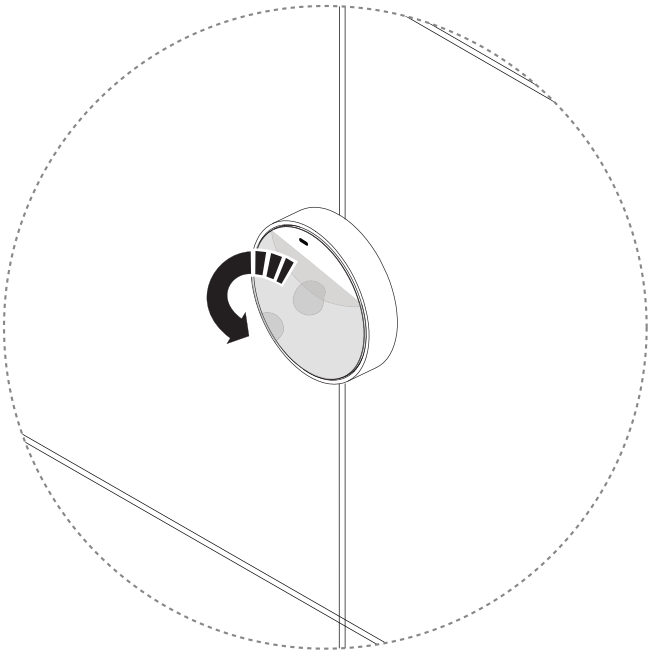
-
11. "Click!" Snap on the Control Dial onto the Fixture. Make sure to align the brackets according to the arrows.



-
12.  **CAUTION**
Make sure to have correct alignment between key and slot in connectors.
Make sure locking ring snaps and connector is locked.

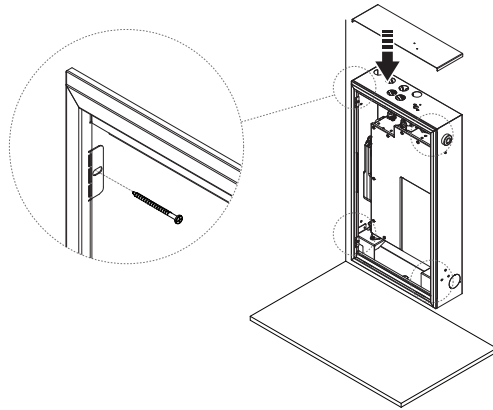
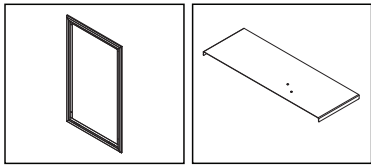


13.



Install Cabinet Frame

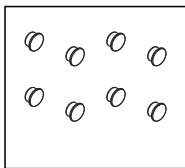
1.



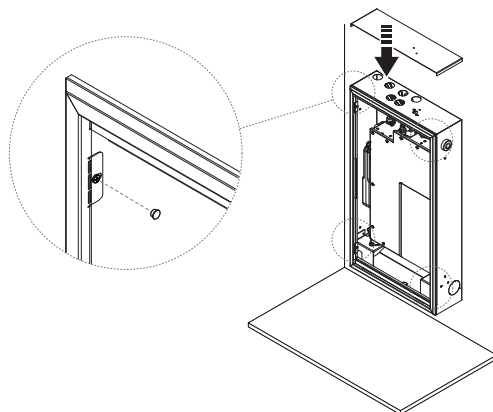
x4

Pan head stainless steel screw

2.



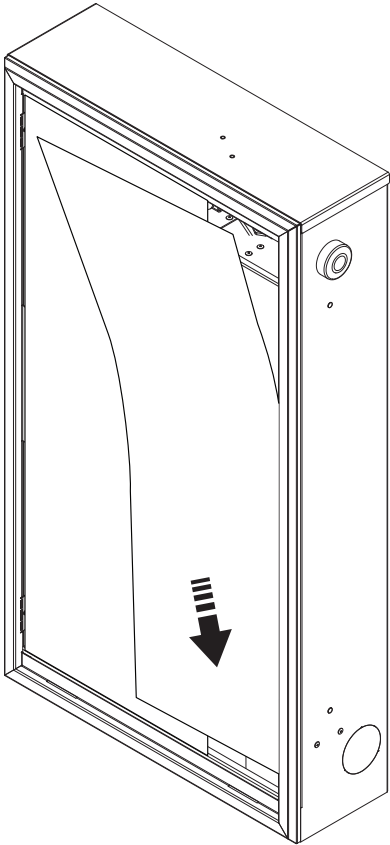
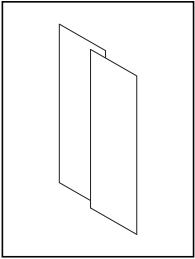
Use the LKS plugs supplied with the Core cabinet to hide the screw heads.



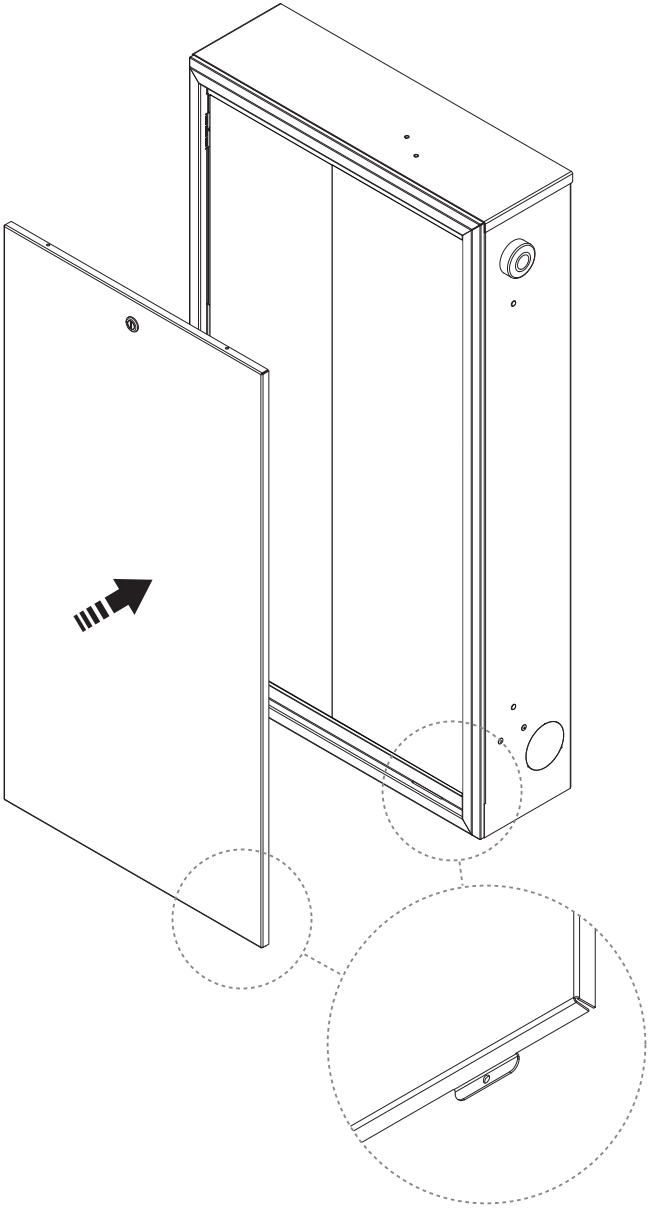
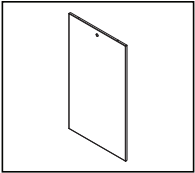
x4

LKS Plug

Install Splash Protection Sheet Set



Install Door



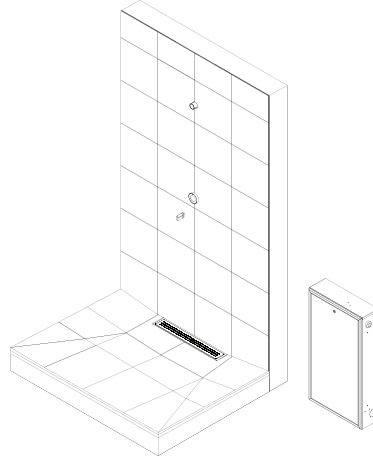
Next Step



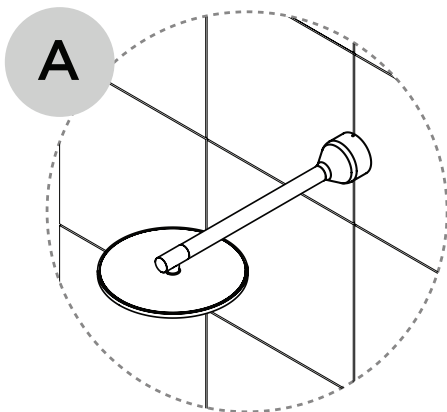
CAUTION

The Orbital Shower will not function without executing following steps.

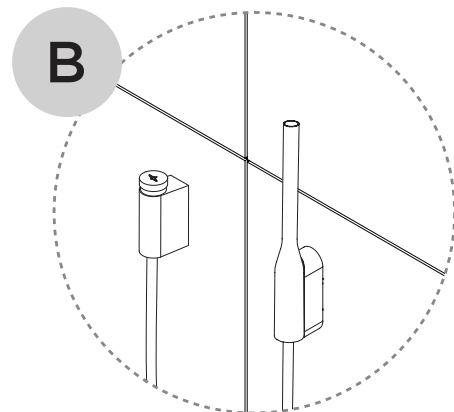
1. Orbital Shower Core installation completed.



2. Next step depends on Shower variant.



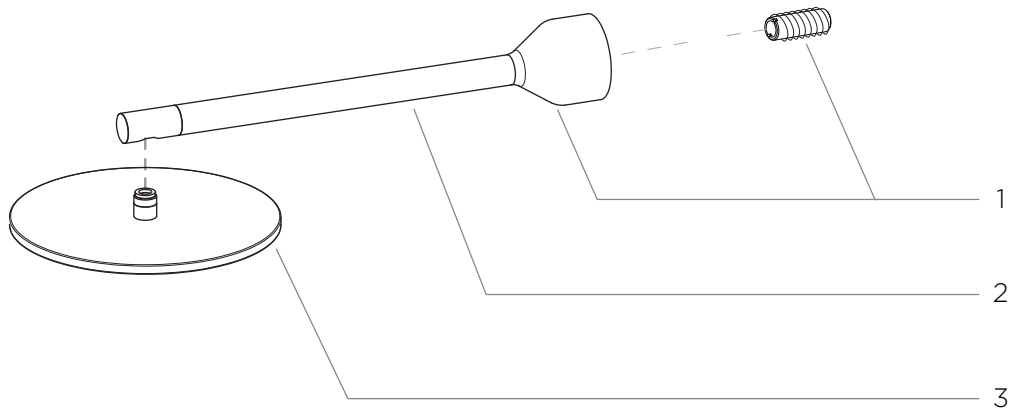
Follow steps valid for Orbital Systems Shower Head ([Installing the Shower Head \[40\]](#))



Follow steps valid for Orbital Systems Hand Shower ([Installing the Diverter and Hand Shower \[43\]](#), [Installing the Hand Shower Holder \[48\]](#) and [Installing the Hand Shower \[43\]](#))

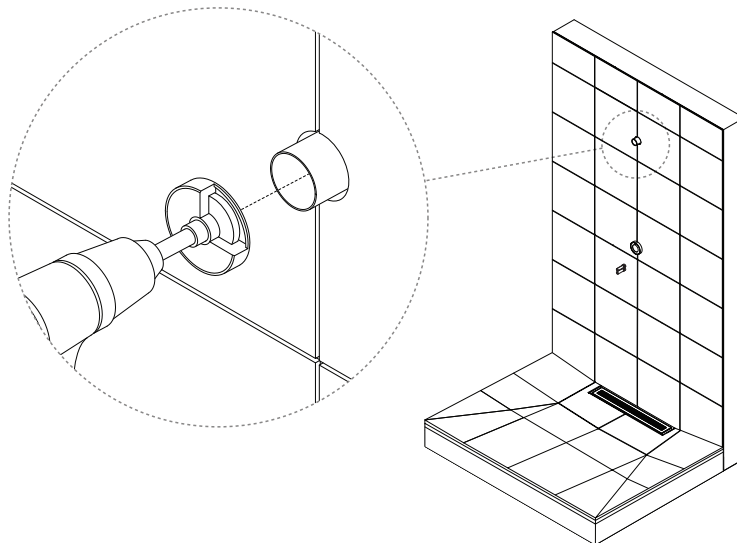
Installing the Shower Head

Component Overview

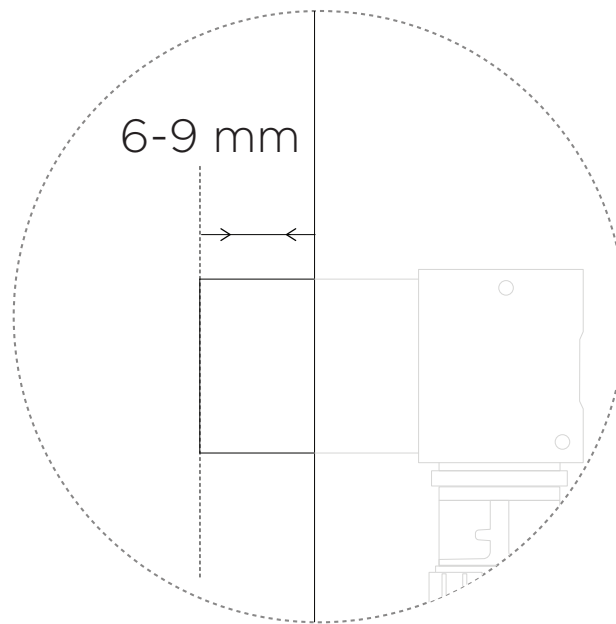


1. Shower Head Wall Mount
2. Shower Head Arm
3. Shower Head

-
1. It is recommended to cut the Wallbox UNI Push with the LK Wall Box Cutter UNI.



2.

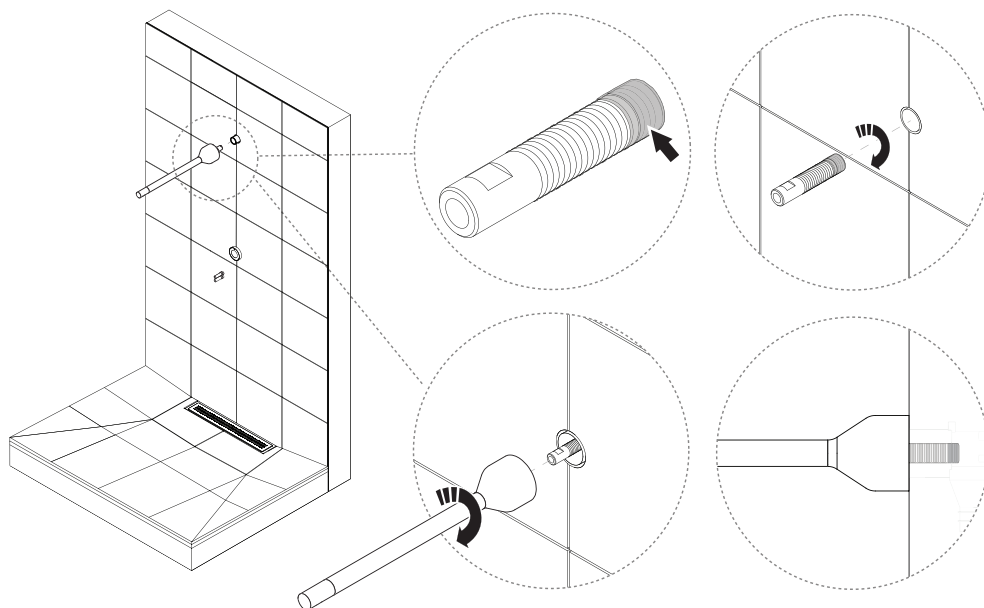



3.



NOTICE

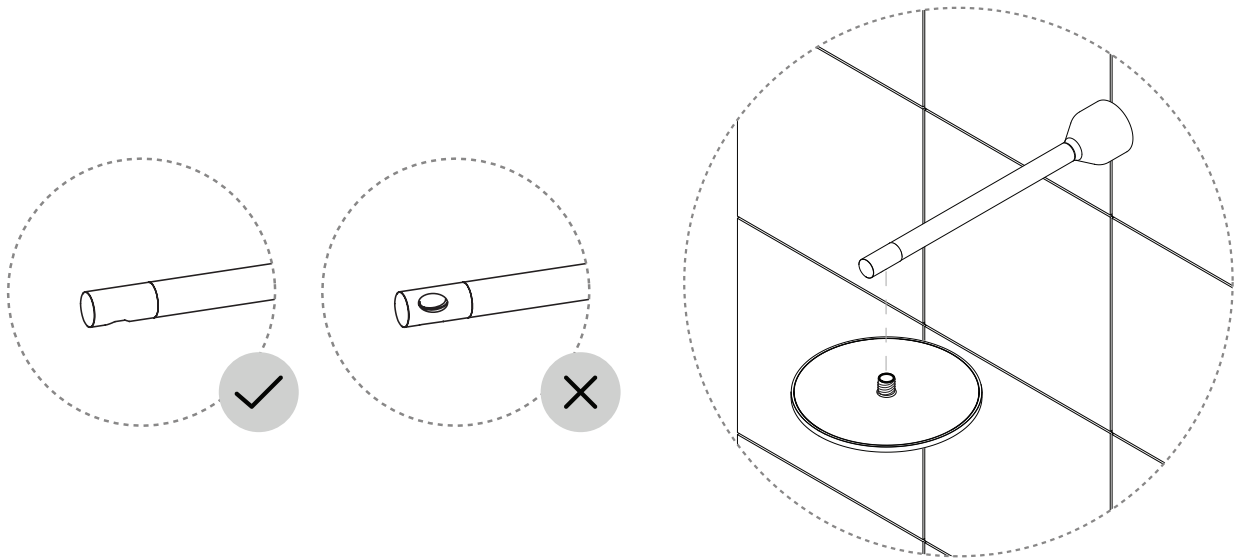
Cover the end of the Shower Water Connector with thread sealant to avoid leakage.



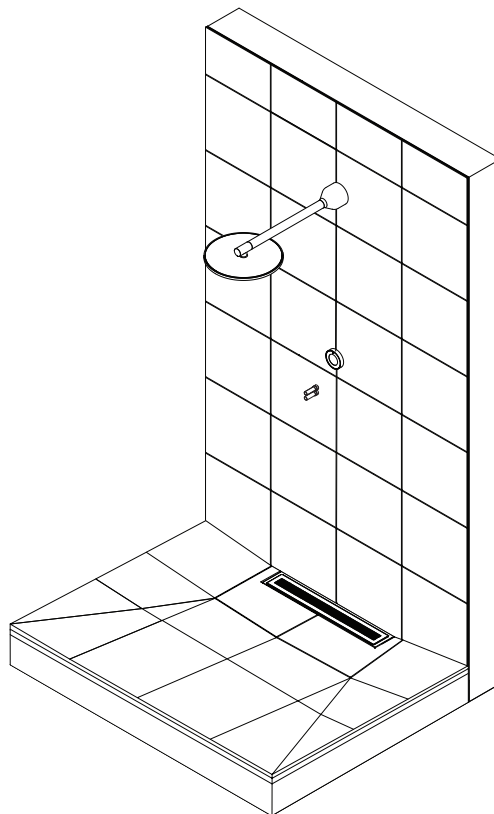
4. 

CAUTION

Make sure not to cross thread and not to overtighten.



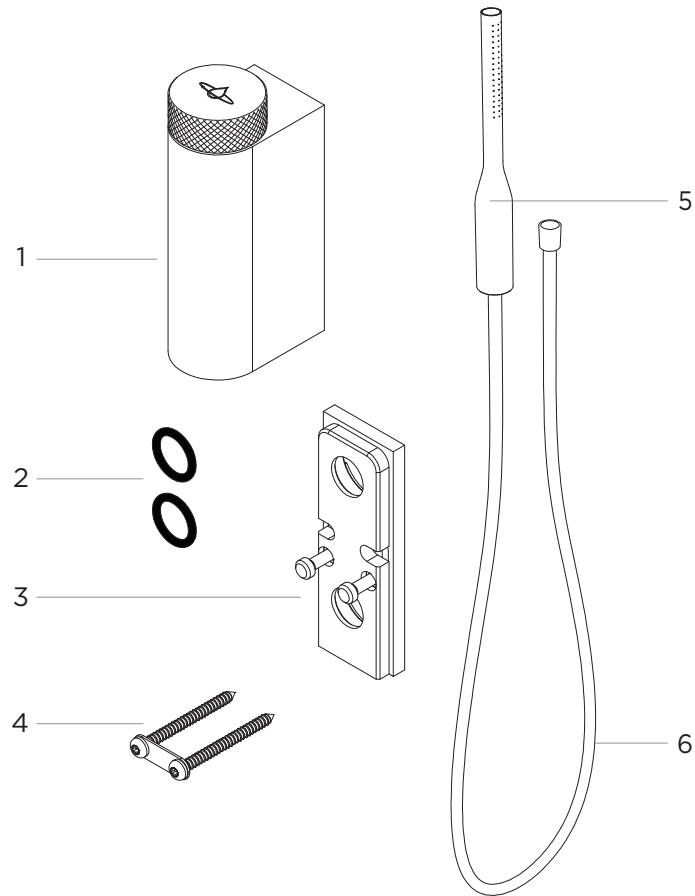
5. Shower Head installation completed.



Installing the Hand Shower

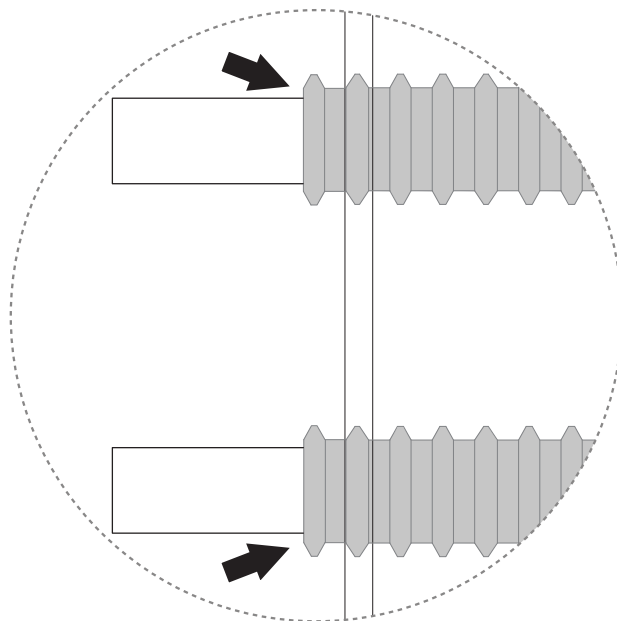
Installing the Diverter and Hand Shower

Component Overview

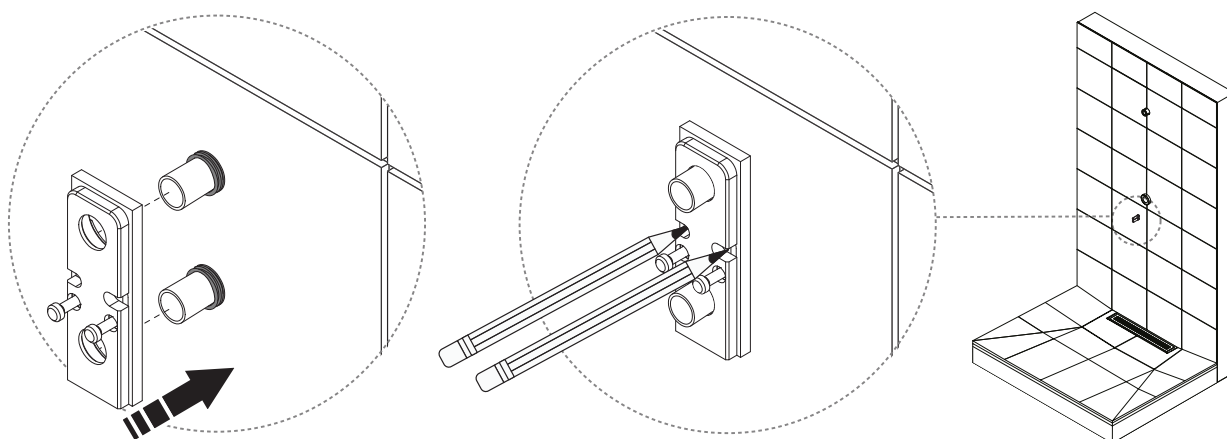


1. Diverter Body, x1
2. O-ring, x2
3. Diverter Wall Plate, x1
4. TX25 screw, x2 and Twin Washer, x1
5. Hand Shower, x1
6. Shower Hose, x1

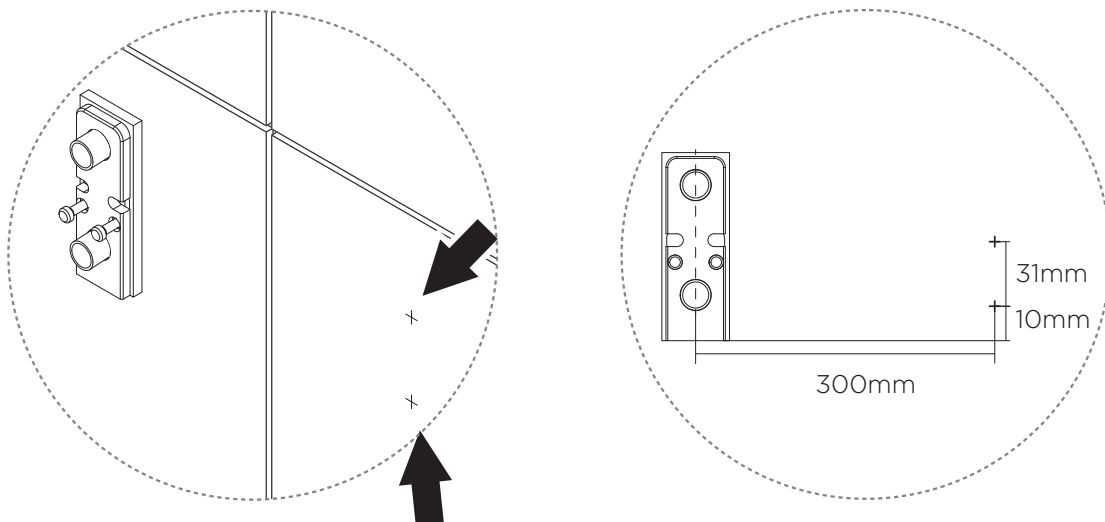
-
1. Cut Conduit minimum 6 mm, max 9 mm outside of tile surface.



- 2.



3. Mark hole positions for Hand Shower holder as well.

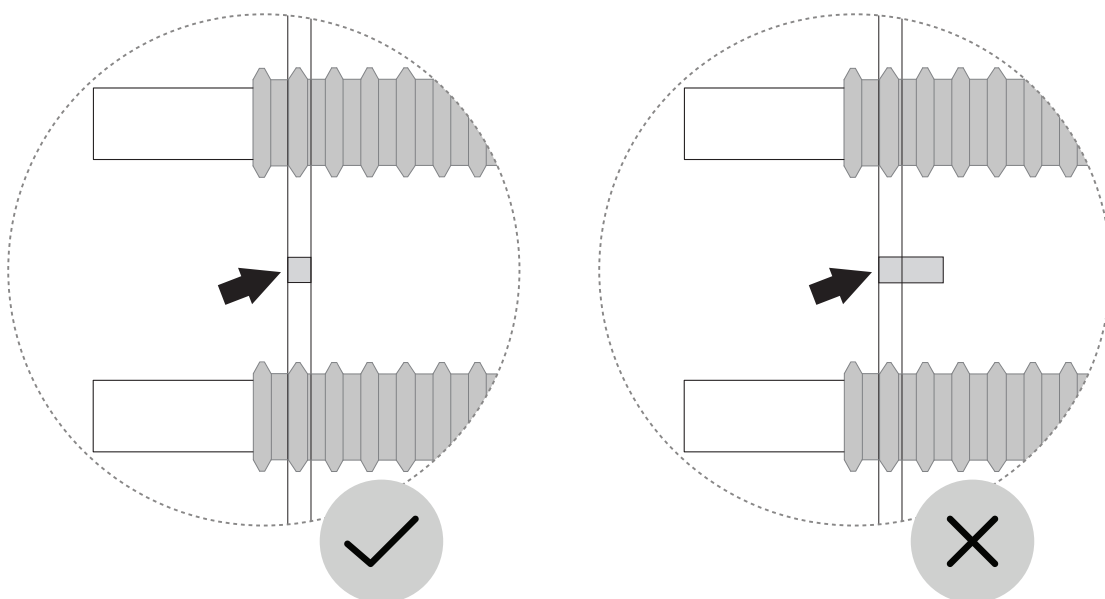


4. Drill 4 holes (6 mm) in marked locations.



CAUTION

- Only drill through the tile itself.
- Seal drill holes according to industry rules. See section [Seal mountings in wet zone \[8\]](#) for instruction.

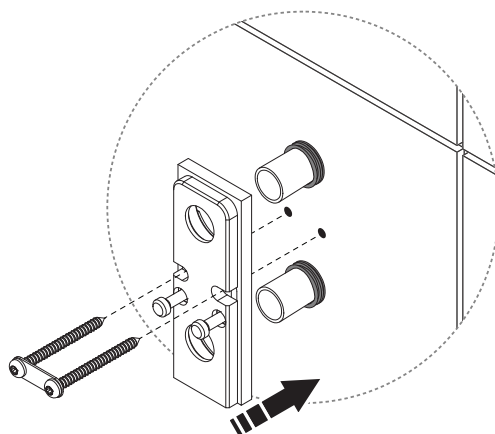


5.



CAUTION

Use 2x included screw, choose screw according to wall thickness.



x2

TX25 stainless steel screw

x1

Twin washer

6.



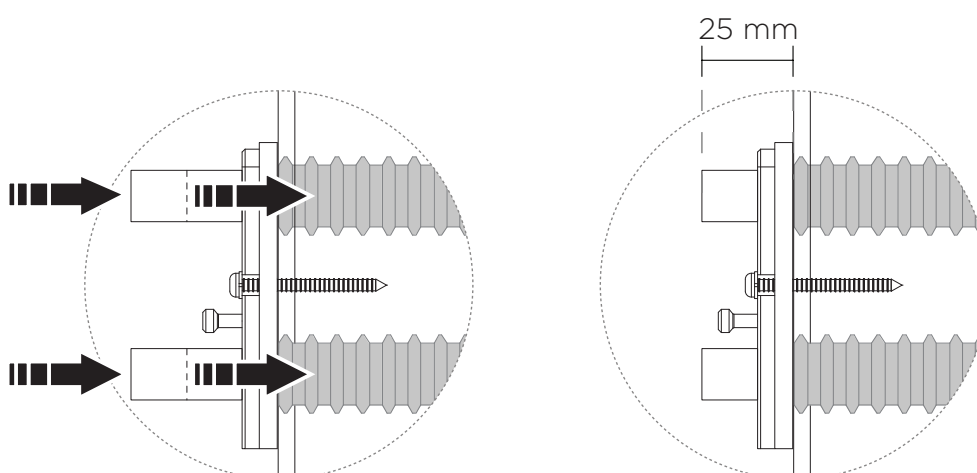
CAUTION

It's important that the PEX hoses are pushed in all the way to 'stop' before cutting to the correct length of 25 mm.

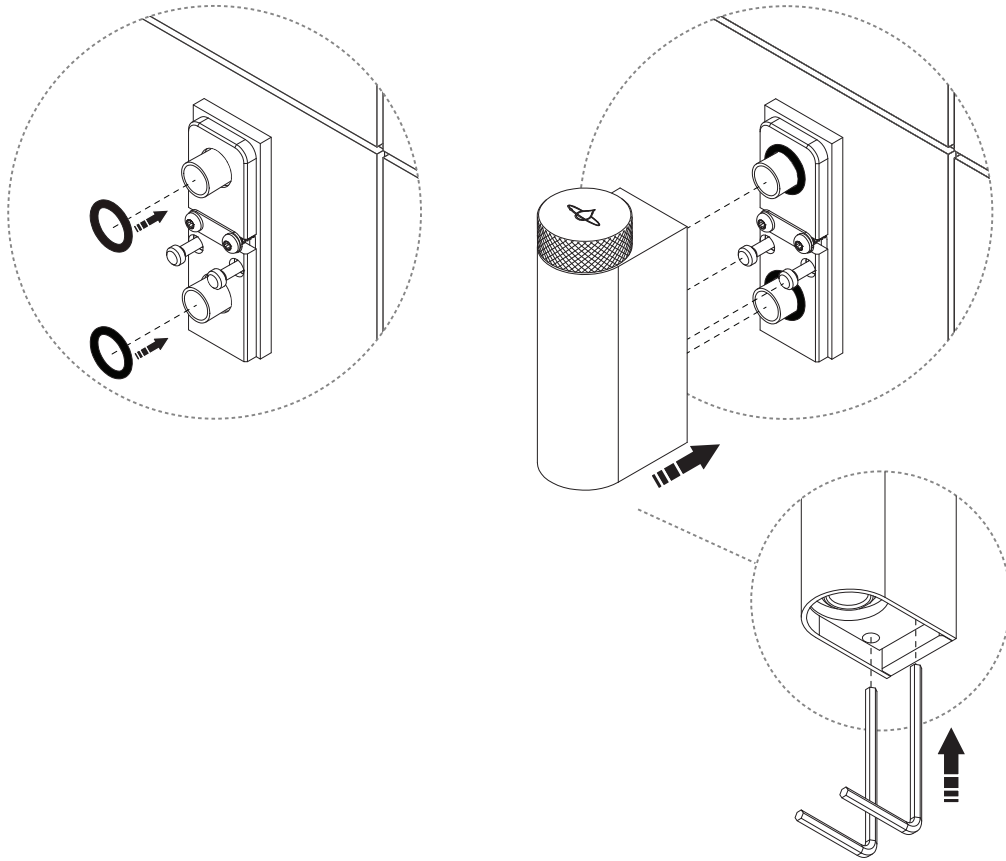


CAUTION

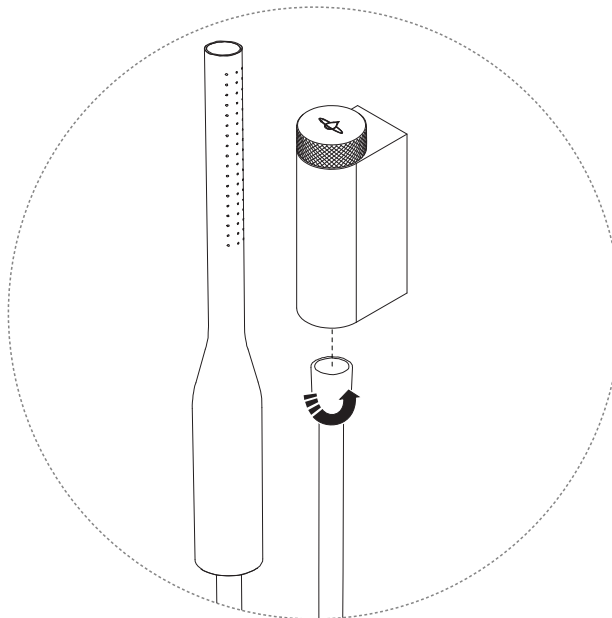
Make sure the pipe is cut straight and avoid too many degrees. A PEX pipe bevel tool is recommended to avoid damage to o-rings.



-
7. Use an Allen key, 3mm, to secure the Diverter Body to the Diverter Wall Plate.

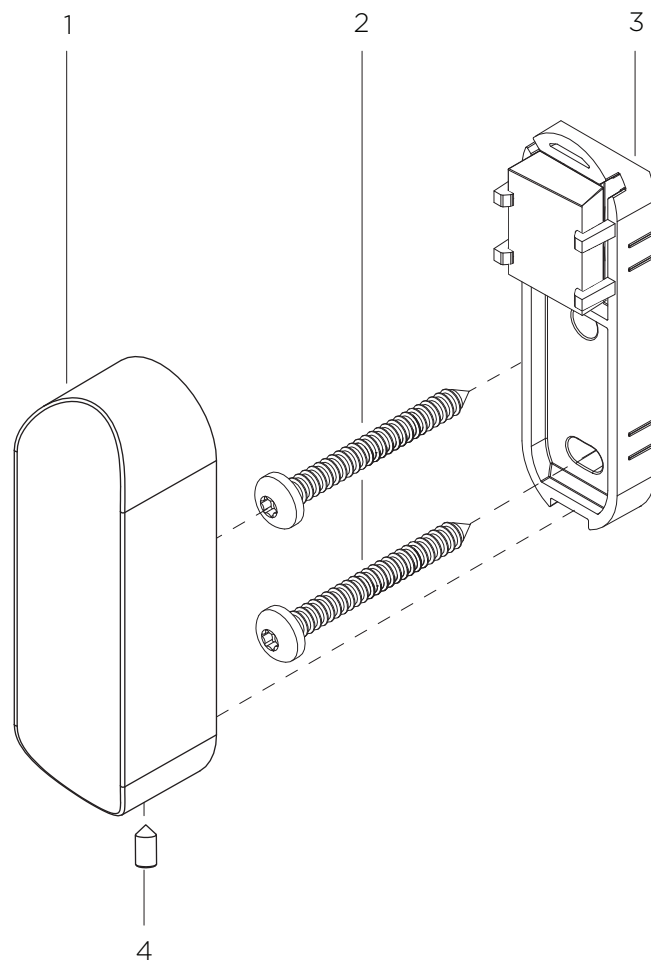


-
- 8.



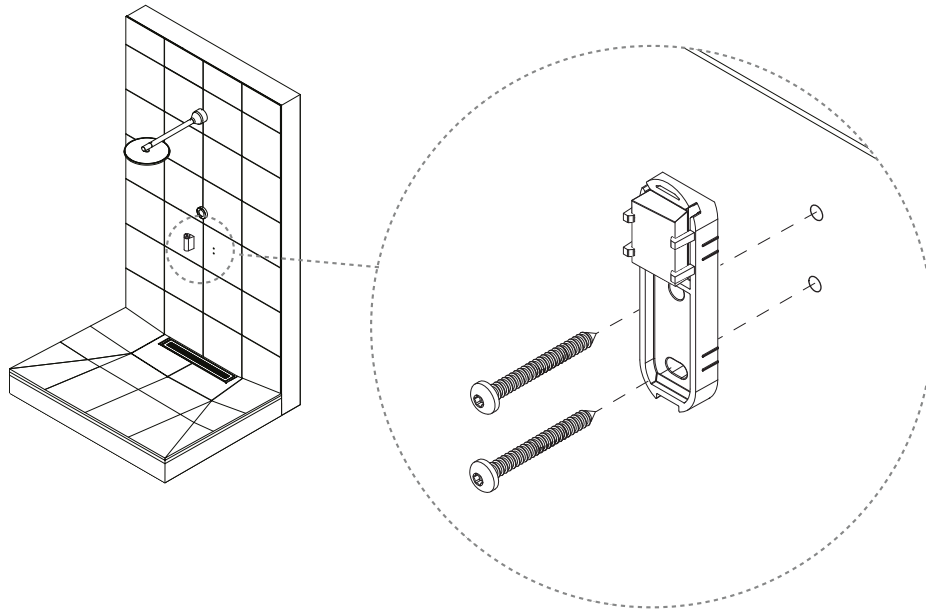
Installing the Hand Shower Holder

Component Overview



1. Hand Shower Cover
2. T25 stainless steel screw 50 mm (5.5 mm), x2
3. Hand Shower Bracket
4. M4 x 8 set screw

1.



x2

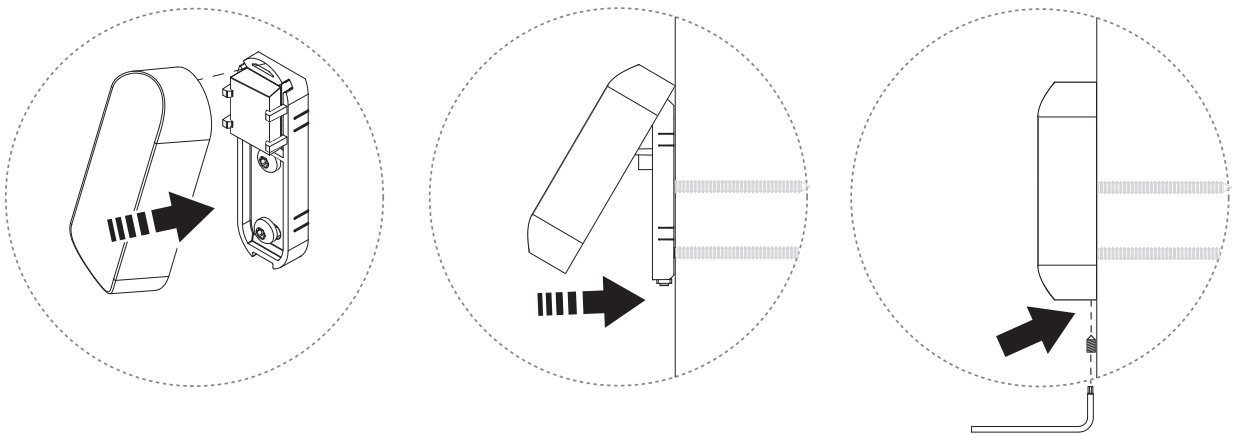
T25 stainless steel screw 50 mm (5.5mm)

2. Push Hand Shower Cover into position and use the Set Screw to lock it.

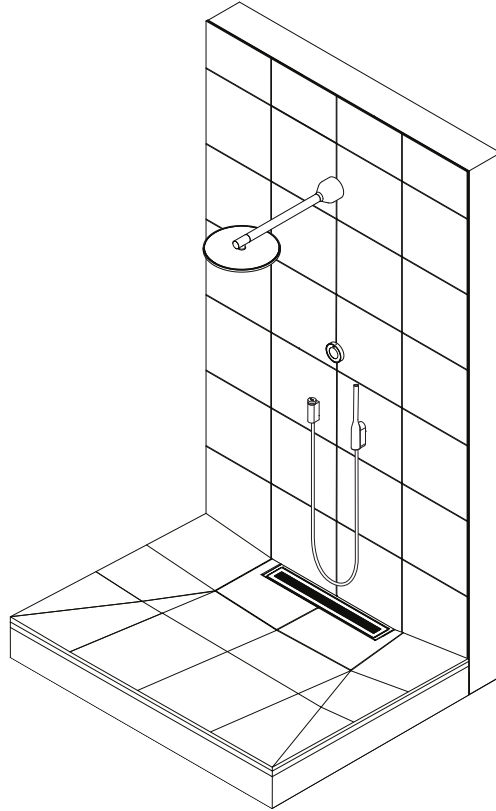


NOTICE

Use Torx T8 L key tool in kit



3. Hand Shower installation completed.



Shower Activation, Wi-Fi Setup and Installation test

To set up Wi-Fi and do an installation test on your Orbital Shower, please download **My Water by Orbital Systems** from App Store or Google Play and follow the instructions provided in the app.



Internet Connection is required

Password protected Wi-Fi 2,4 GHz / 5 GHz or Ethernet.

The installation kit contains components for either Wi-Fi connection OR Ethernet depending on what has been specified in the shower order.

ORBITAL



CERTIFIED SPACE TECHNOLOGY