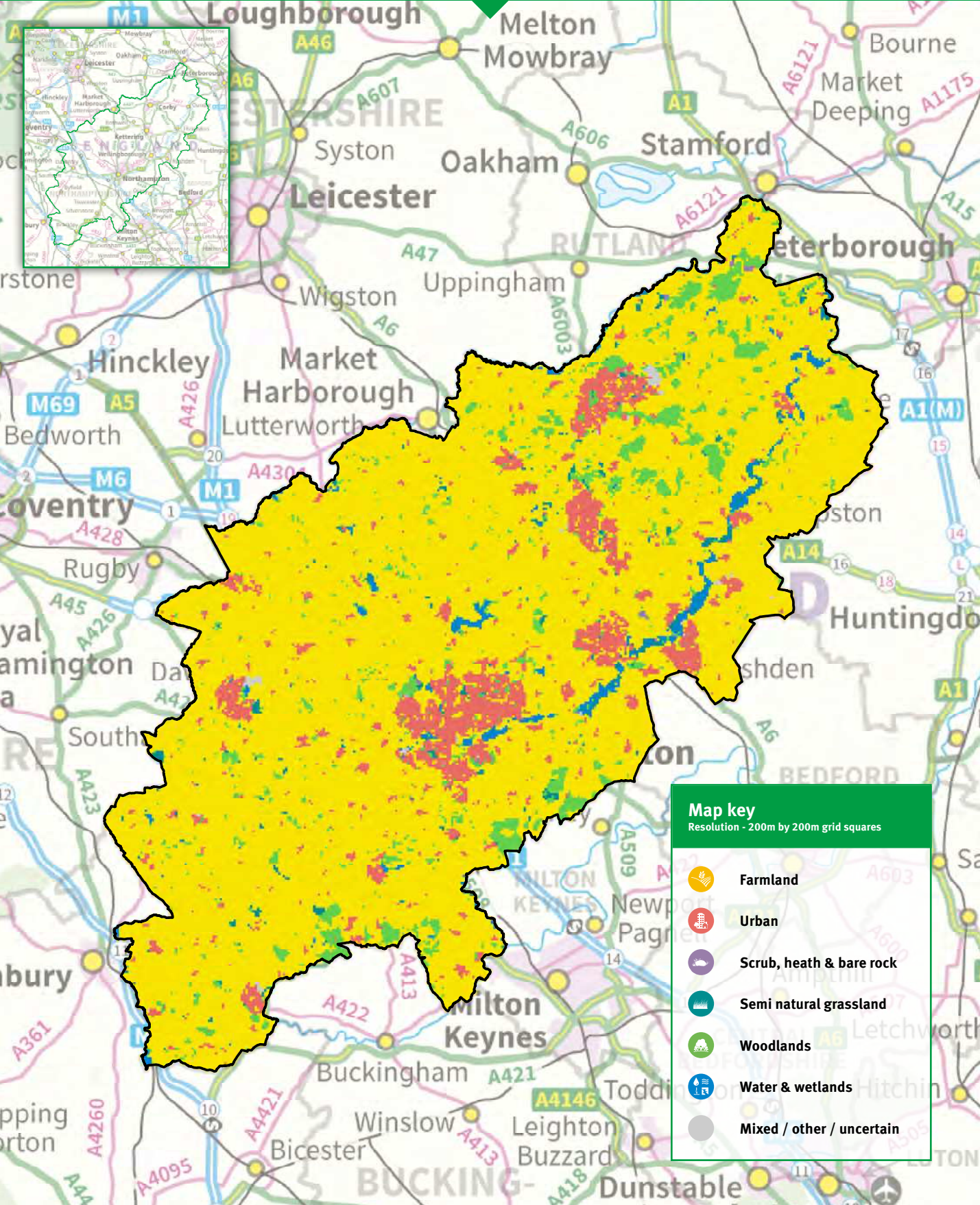


# THE NATURAL CAPITAL STORY OF THE OXCAM ARC – **COUNTY LEVEL**





# Northamptonshire Natural Capital Assets



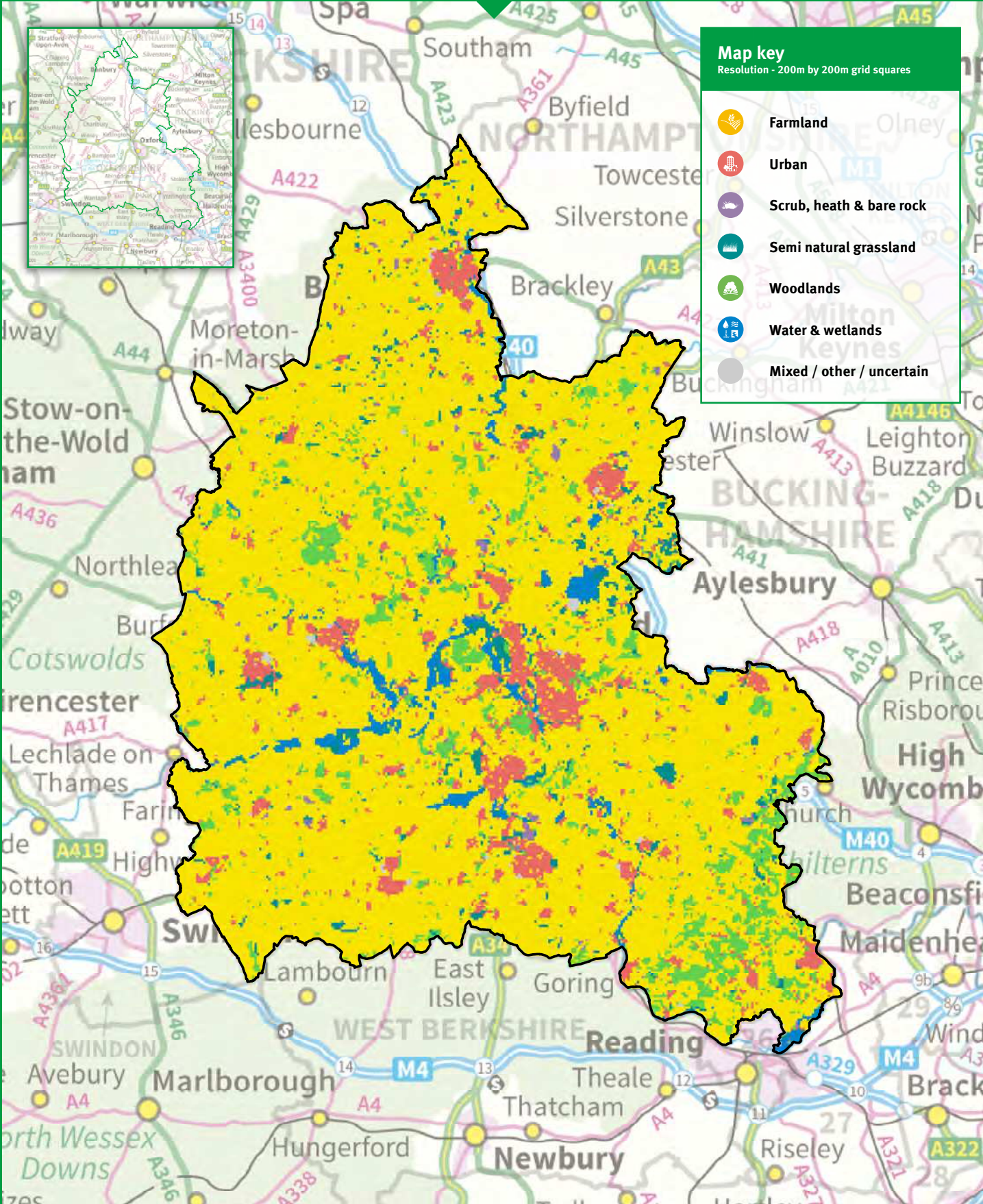
This map was created using data from various sources. Please contact the Oxford to Cambridge Local Natural Capital Plan Team for full information.  
Contains Ordnance Survey data © Crown copyright and database right 2020.  
Produced using LCM2017 © and database right NERC (CEH) 2017. All rights reserved.

Contains data provided by Buckinghamshire & Milton Keynes Environmental Records Centre. All rights reserved.  
Contains data provided by Bedfordshire and Luton Biodiversity Recording and Monitoring Centre. All rights reserved.  
Incorporates biodiversity data supplied by Thames Valley Environmental Records Centre (TVERC) in 2019. Copyright to TVERC. All rights reserved.

Contains Corine Data. © Landcover data was produced by a programme coordinated by the European Environment Agency (EEA) with funding from the European Union.  
This map includes Cambridgeshire and Peterborough Biodiversity Group habitat information as produced by Natural Capital Solutions Ltd. © Natural Capital Solutions Ltd 2020.

This map incorporates biodiversity data supplied to the OxCam LNCP by The Wildlife Trust for Bedfordshire, Cambridgeshire and Northamptonshire (Wildlife Trust BCN), and is copyright to Wildlife Trust BCN and/or its partners.  
Data supplied is a snapshot in time and data owners should be contacted for up-to-date information.

# Oxfordshire Natural Capital Assets



This map was created using data from various sources. Please contact the Oxford to Cambridge Local Natural Capital Plan Team for full information.  
Contains Ordnance Survey data © Crown copyright and database right 2020.  
Produced using LCM2017 © and database right NERC (CEH) 2017. All rights reserved.

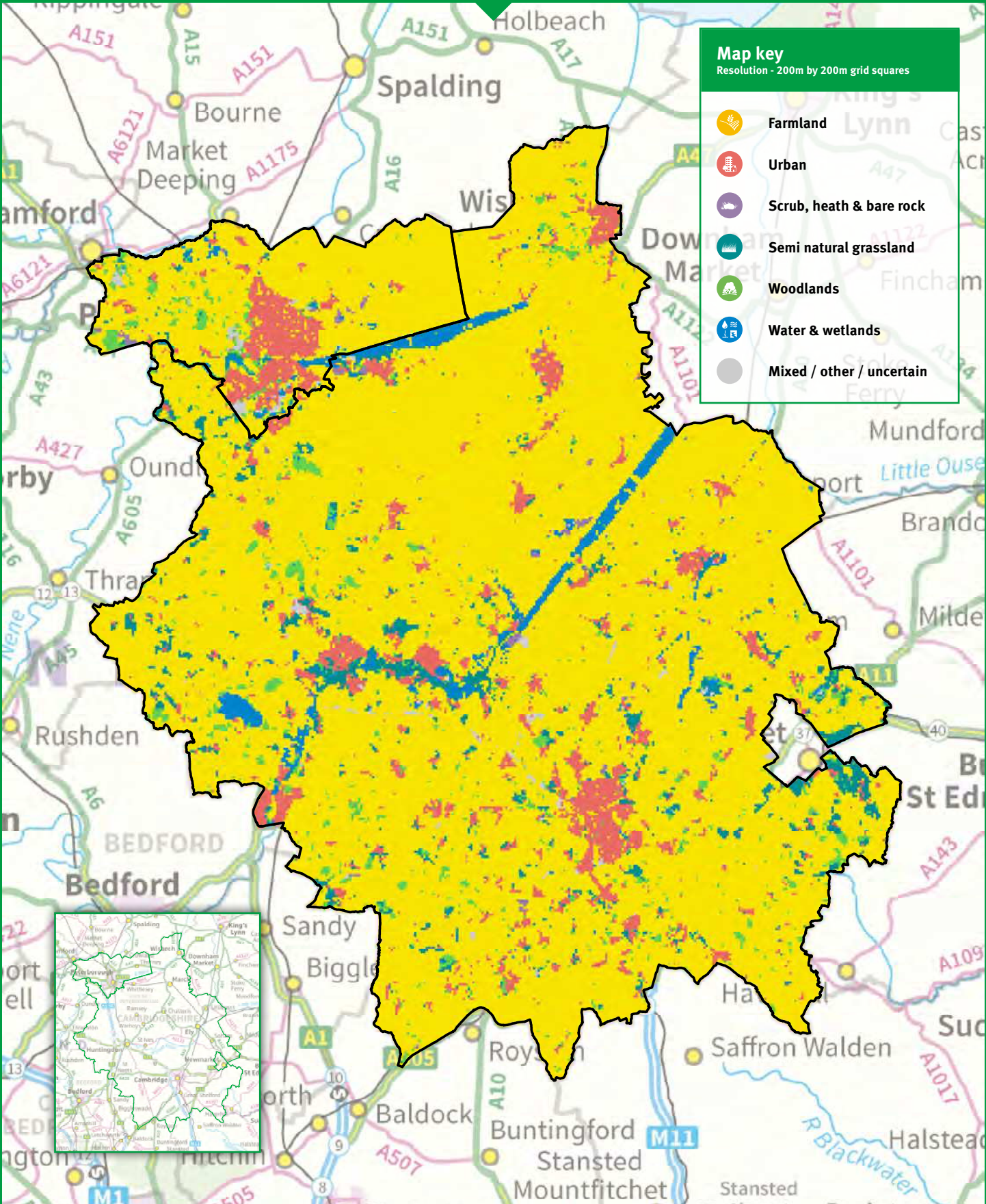
Contains data provided by Buckinghamshire & Milton Keynes Environmental Records Centre. All rights reserved.  
Contains data provided by Bedfordshire and Luton Biodiversity Recording and Monitoring Centre. All rights reserved.  
Incorporates biodiversity data supplied by Thames Valley Environmental Records Centre (TVERC) in 2019. Copyright to TVERC. All rights reserved.

Contains Corine Data. © Landcover data was produced by a programme coordinated by the European Environment Agency (EEA) with funding from the European Union.  
This map includes Cambridgeshire and Peterborough Biodiversity Group habitat information as produced by Natural Capital Solutions Ltd. © Natural Capital Solutions Ltd 2020.

This map incorporates biodiversity data supplied to the OxCam LNCP by The Wildlife Trust for Bedfordshire, Cambridgeshire and Northamptonshire (Wildlife Trust BCN), and is copyright to Wildlife Trust BCN and/or its partners.  
Data supplied is a snapshot in time and data owners should be contacted for up-to-date information.



# Cambridgeshire Natural Capital Assets



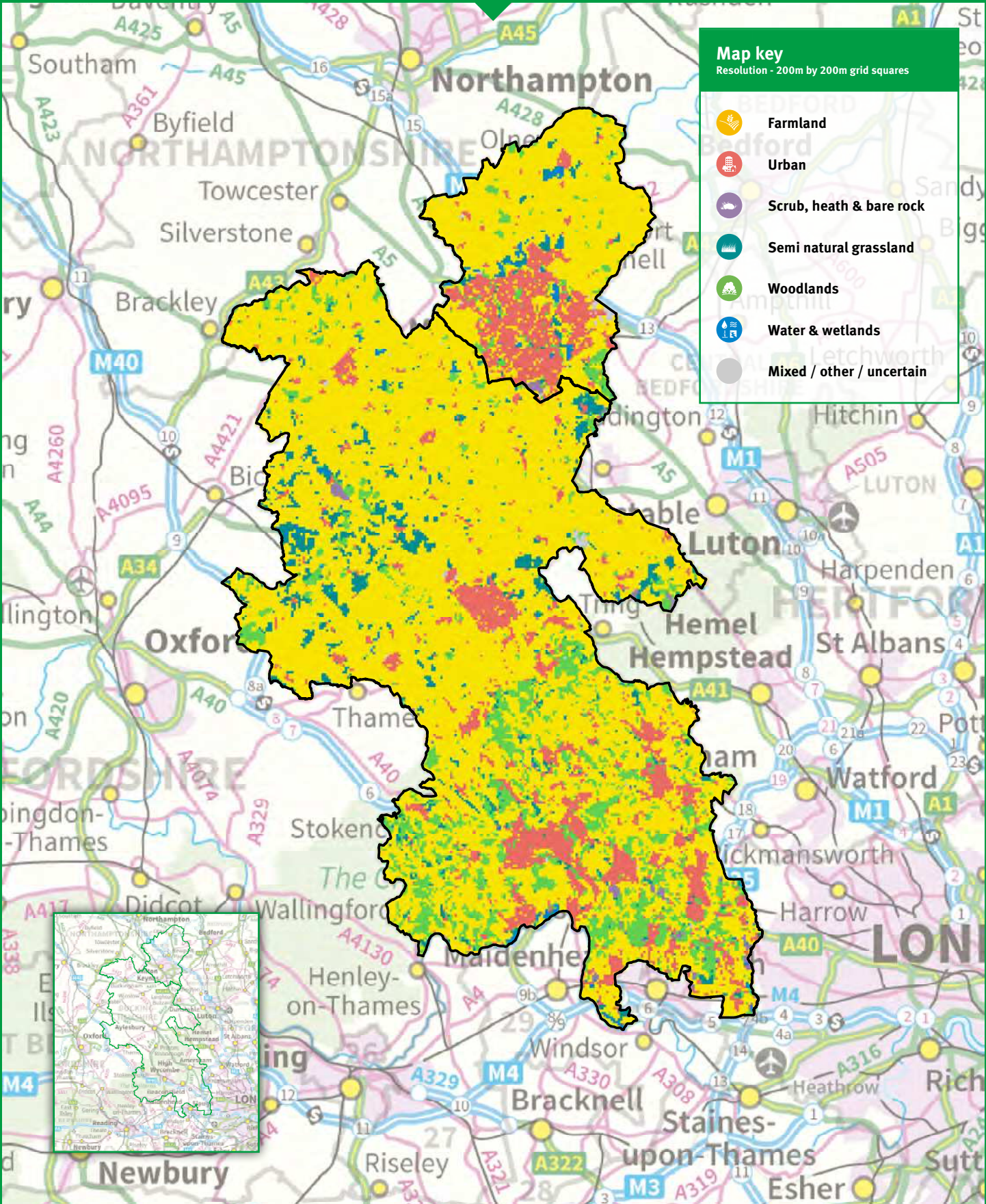
This map was created using data from various sources. Please contact the Oxford to Cambridge Local Natural Capital Plan Team for full information.  
Contains Ordnance Survey data © Crown copyright and database right 2020.  
Produced using LCM2017 © and database right NERC (CEH) 2017. All rights reserved.

Contains data provided by Buckinghamshire & Milton Keynes Environmental Records Centre. All rights reserved.  
Contains data provided by Bedfordshire and Luton Biodiversity Recording and Monitoring Centre. All rights reserved.  
Incorporates biodiversity data supplied by Thames Valley Environmental Records Centre (TVERC) in 2019. Copyright to TVERC. All rights reserved.

Contains Corine Data. © Landcover data was produced by a programme coordinated by the European Environment Agency (EEA) with funding from the European Union.  
This map includes Cambridgeshire and Peterborough Biodiversity Group habitat information as produced by Natural Capital Solutions Ltd. © Natural Capital Solutions Ltd 2020.

This map incorporates biodiversity data supplied to the OxCam LNCP by The Wildlife Trust for Bedfordshire, Cambridgeshire and Northamptonshire (Wildlife Trust BCN), and is copyright to Wildlife Trust BCN and/or its partners.  
Data supplied is a snapshot in time and data owners should be contacted for up-to-date information.

# Buckinghamshire Natural Capital Assets



This map was created using data from various sources. Please contact the Oxford to Cambridge Local Natural Capital Plan Team for full information.  
Contains Ordnance Survey data © Crown copyright and database right 2020.  
Produced using LCM2017 © and database right NERC (CEH) 2017. All rights reserved.

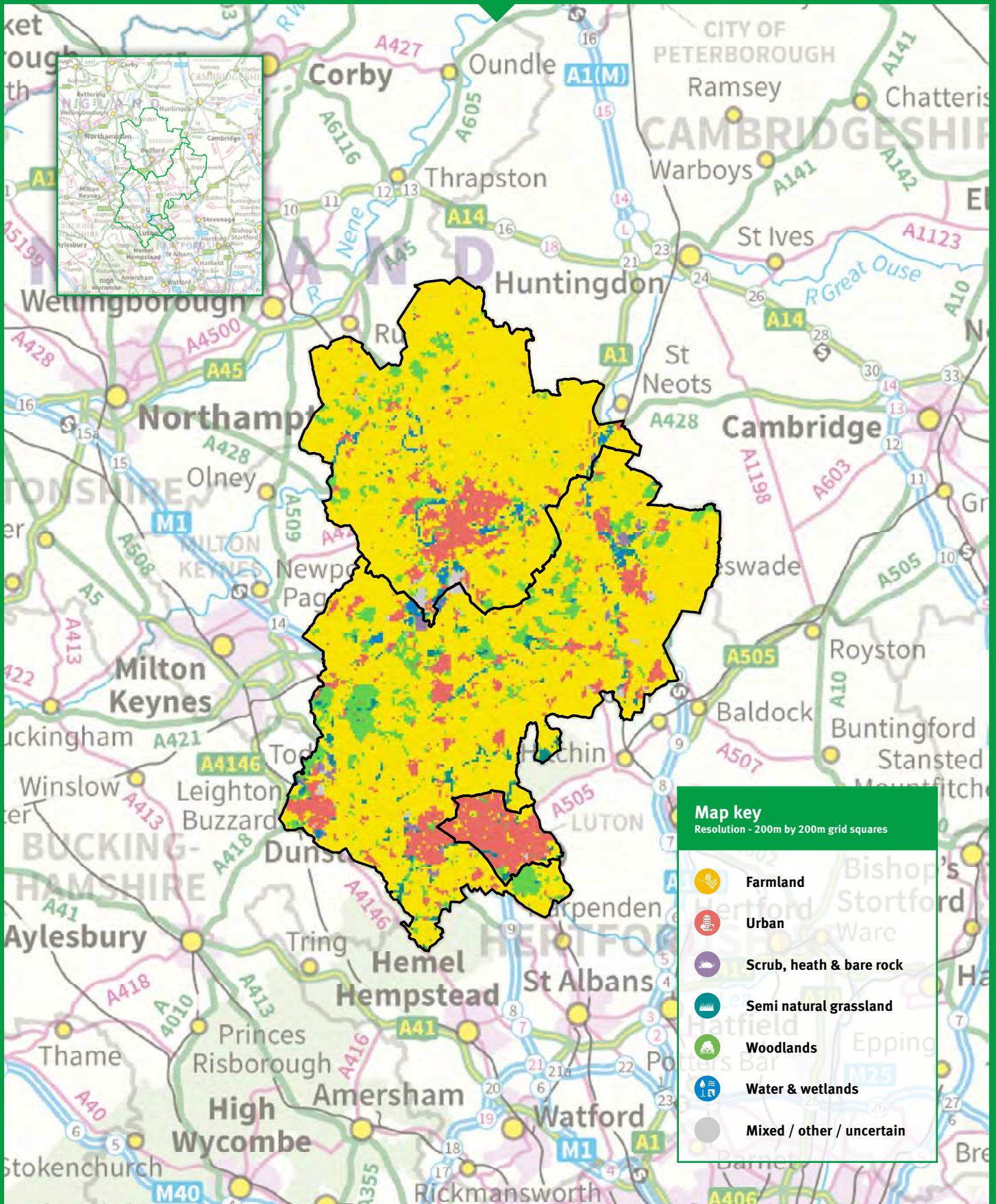
Contains data provided by Buckinghamshire & Milton Keynes Environmental Records Centre. All rights reserved.  
Contains data provided by Bedfordshire and Luton Biodiversity Recording and Monitoring Centre. All rights reserved.  
Incorporates biodiversity data supplied by Thames Valley Environmental Records Centre (TVERC) in 2019. Copyright to TVERC. All rights reserved.

Contains Corine Data. © Landcover data was produced by a programme coordinated by the European Environment Agency (EEA) with funding from the European Union.  
This map includes Cambridgeshire and Peterborough Biodiversity Group habitat information as produced by Natural Capital Solutions Ltd. © Natural Capital Solutions Ltd 2020.

This map incorporates biodiversity data supplied to the OxCam LNCP by The Wildlife Trust for Bedfordshire, Cambridgeshire and Northamptonshire (Wildlife Trust BCN), and is copyright to Wildlife Trust BCN and/or its partners.  
Data supplied is a snapshot in time and data owners should be contacted for up-to-date information.



# Bedfordshire Natural Capital Assets



This map was created using data from various sources. Please contact the Oxford to Cambridge Local Natural Capital Plan Team for full information.  
Contains Ordnance Survey data © Crown copyright and database right 2020  
Produced using LCM2017 © and database right NERC (CEH) 2017. All rights reserved.

Contains data provided by Buckinghamshire & Milton Keynes Environmental Records Centre. All rights reserved.  
Contains data provided by Bedfordshire and Luton Biodiversity Recording and Monitoring Centre. All rights reserved.  
Incorporates biodiversity data supplied by Thames Valley Environmental Records Centre (TVERC) in 2019. Copyright to TVERC. All rights reserved.

Contains Corine Data. © Landcover data was produced by a programme coordinated by the European Environment Agency (EEA) with funding from the European Union.  
This map includes Cambridgeshire and Peterborough Biodiversity Group habitat information as produced by Natural Capital Solutions Ltd. © Natural Capital Solutions Ltd 2020.

This map incorporates biodiversity data supplied to the OxCam LNCP by The Wildlife Trust for Bedfordshire, Cambridgeshire and Northamptonshire (Wildlife Trust BCN), and is copyright to Wildlife Trust BCN and/or its partners.  
Data supplied is a snapshot in time and data owners should be contacted for up-to-date information.

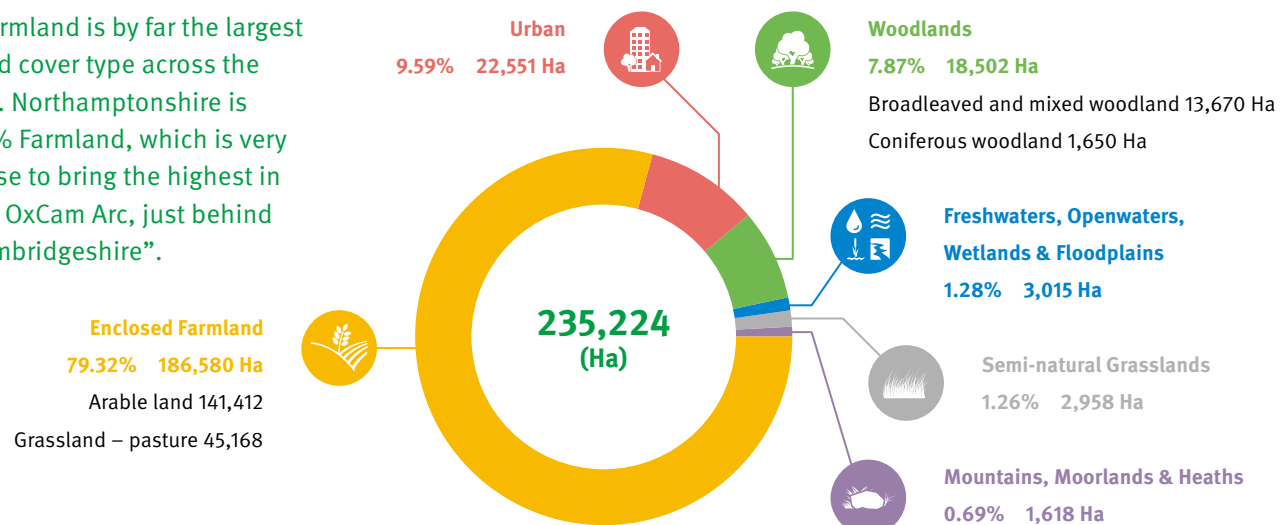


# Understanding the Benefit & Value of Natural Capital



## The land cover types in Northamptonshire by area

“Farmland is by far the largest land cover type across the Arc. Northamptonshire is 79% Farmland, which is very close to bring the highest in the OxCam Arc, just behind Cambridgeshire”.



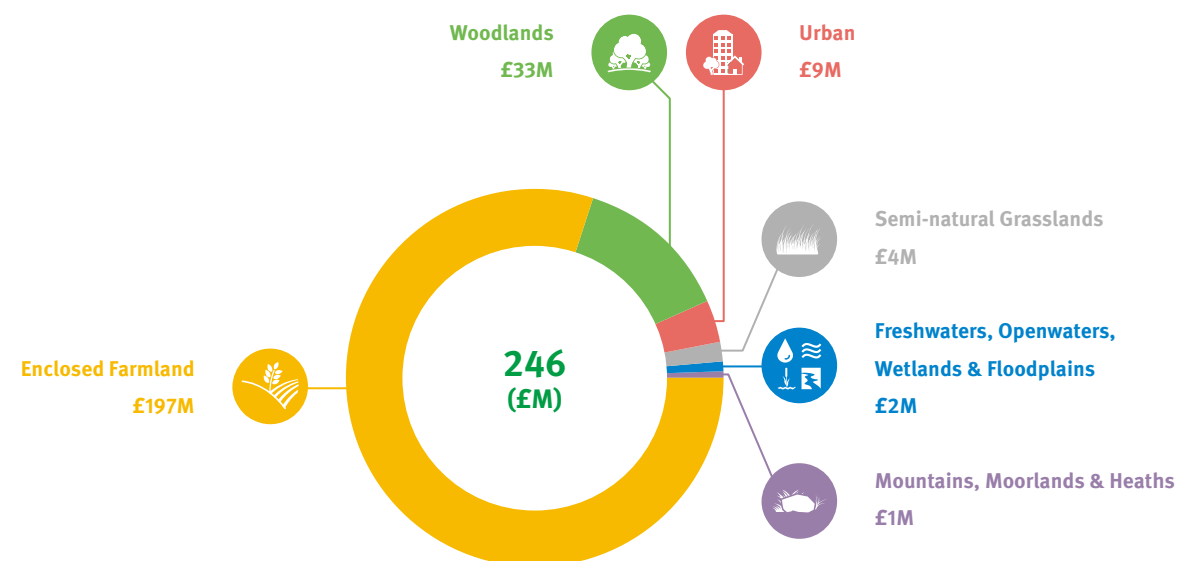
## Per hectare value of each natural asset



These values are an average. They are made up from direct valuations of more detailed habitat/land-use types, and through attributing the monetary valuations of water supply, recreational visits and river health to the habitat categories.

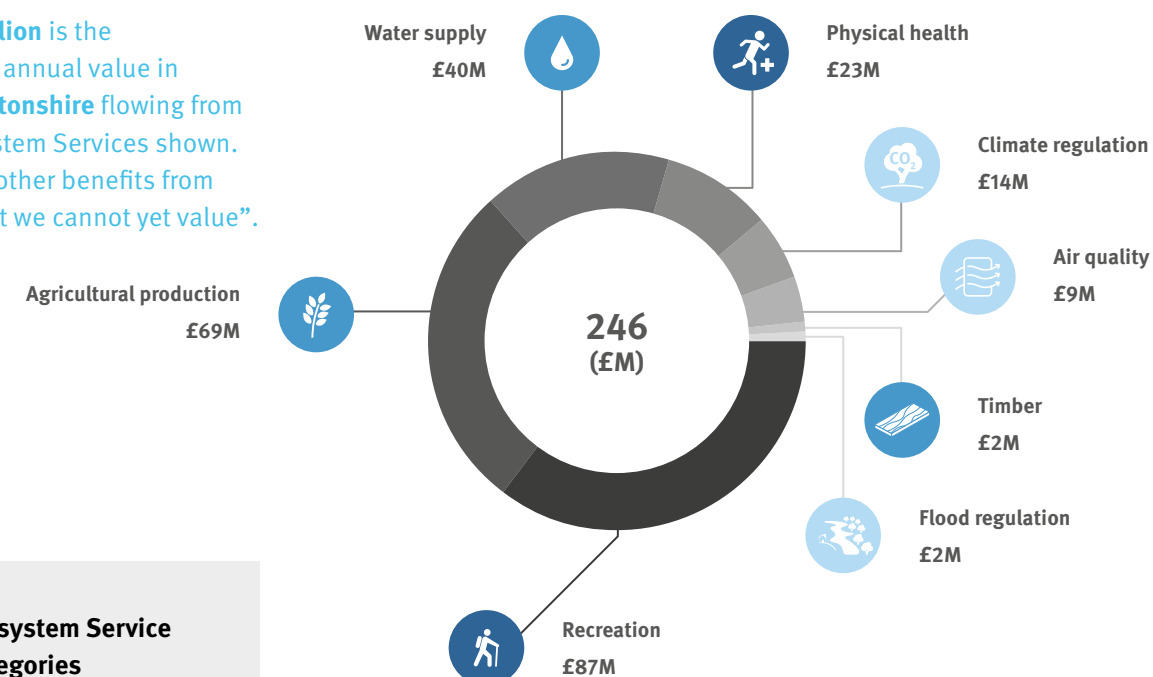


## The value of the natural assets in Northamptonshire



## The value and benefits from Ecosystem Services in Northamptonshire

“£246 million is the estimated annual value in Northamptonshire flowing from the Ecosystem Services shown. There are other benefits from nature that we cannot yet value”.



### Ecosystem Service Categories

- Regulating
- Provisioning
- Cultural



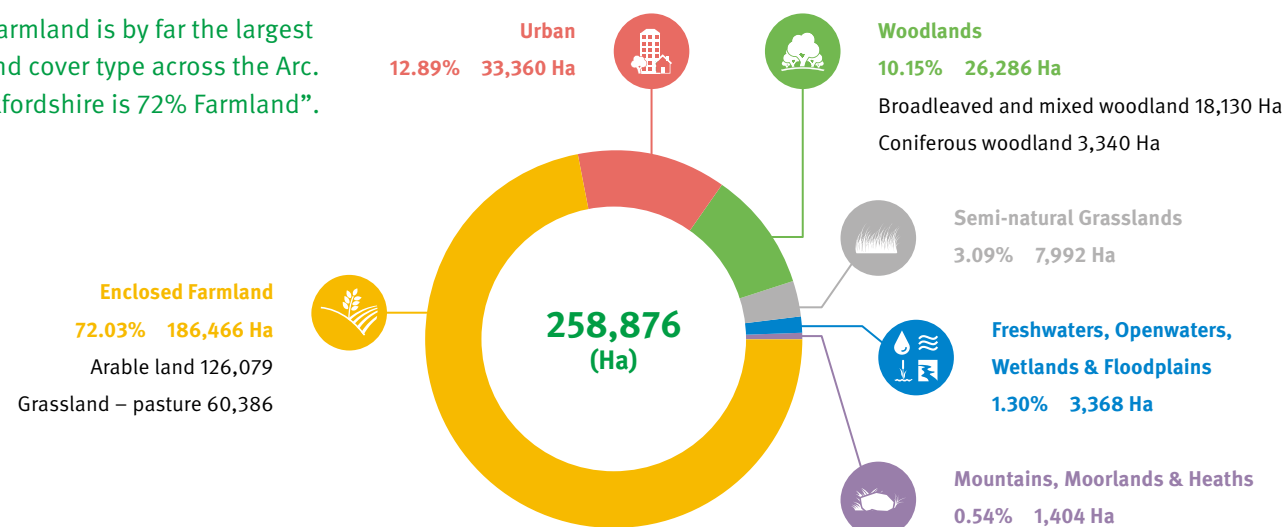


# Understanding the Benefit & Value of Natural Capital

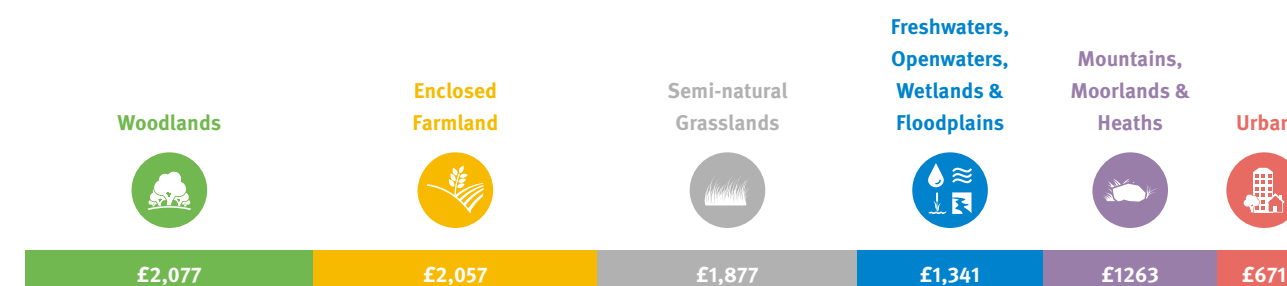


## The land cover types in Oxfordshire by area

“Farmland is by far the largest land cover type across the Arc. Oxfordshire is 72% Farmland”.



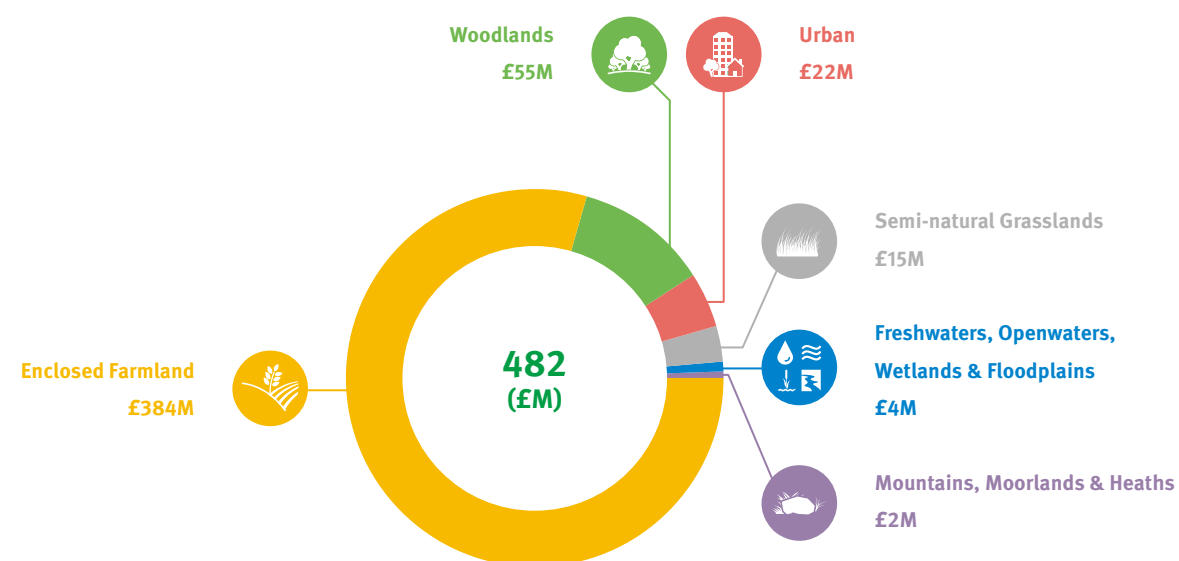
## Per hectare value of each natural asset



These values are an average. They are made up from direct valuations of more detailed habitat/land-use types, and through attributing the monetary valuations of water supply, recreational visits and river health to the habitat categories.

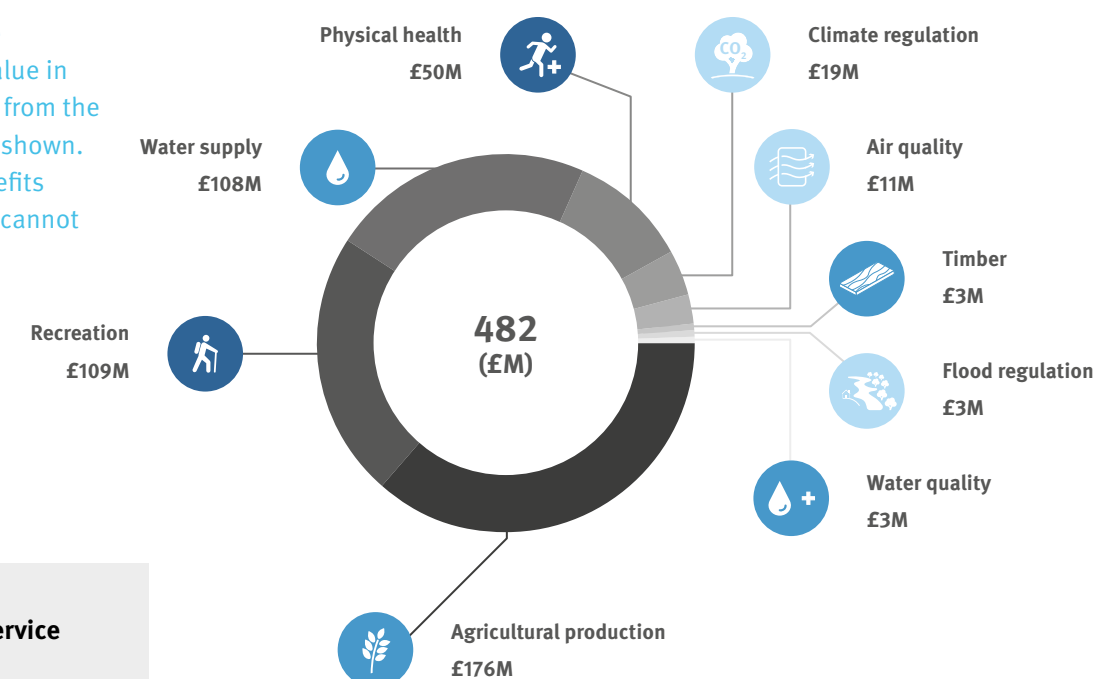


## The value of the natural assets in Oxfordshire



## The value and benefits from Ecosystem Services in Oxfordshire

“£482 million is the estimated annual value in Oxfordshire flowing from the Ecosystem Services shown. There are other benefits from nature that we cannot yet value”.



### Ecosystem Service Categories

- Regulating
- Provisioning
- Cultural

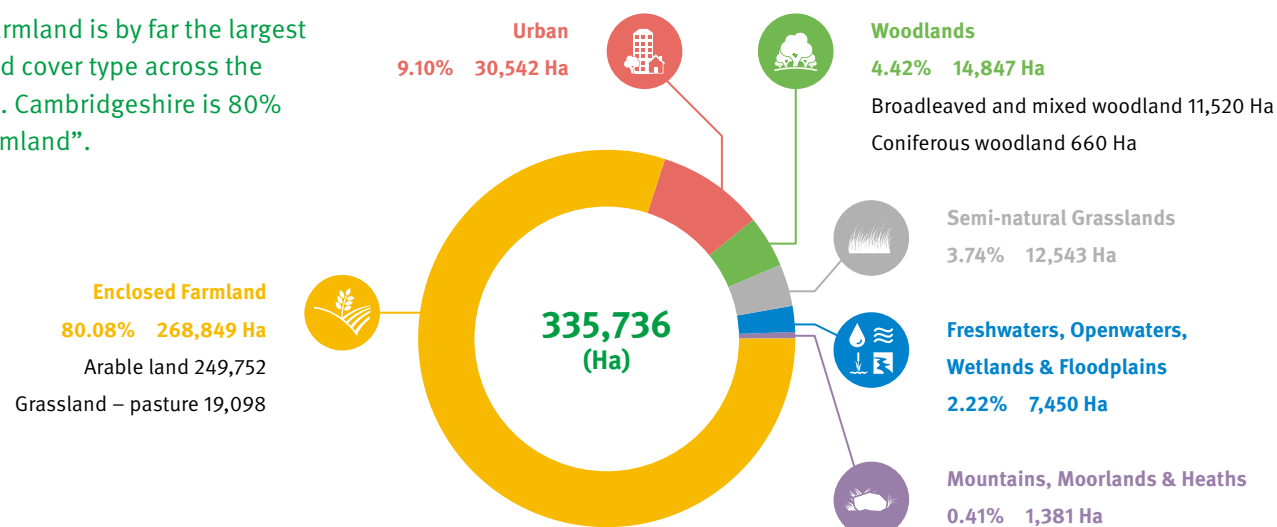


# Understanding the Benefit & Value of Natural Capital



## The land cover types in Cambridgeshire by area

“Farmland is by far the largest land cover type across the Arc. Cambridgeshire is 80% Farmland”.



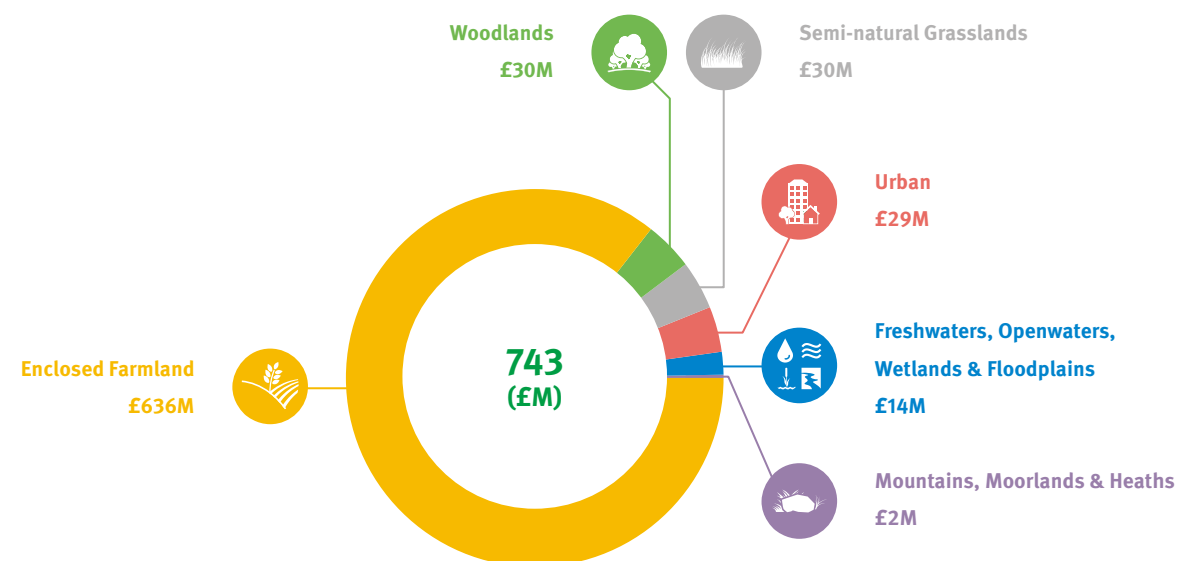
## Per hectare value of each natural asset



These values are an average. They are made up from direct valuations of more detailed habitat/land-use types, and through attributing the monetary valuations of water supply, recreational visits and river health to the habitat categories.

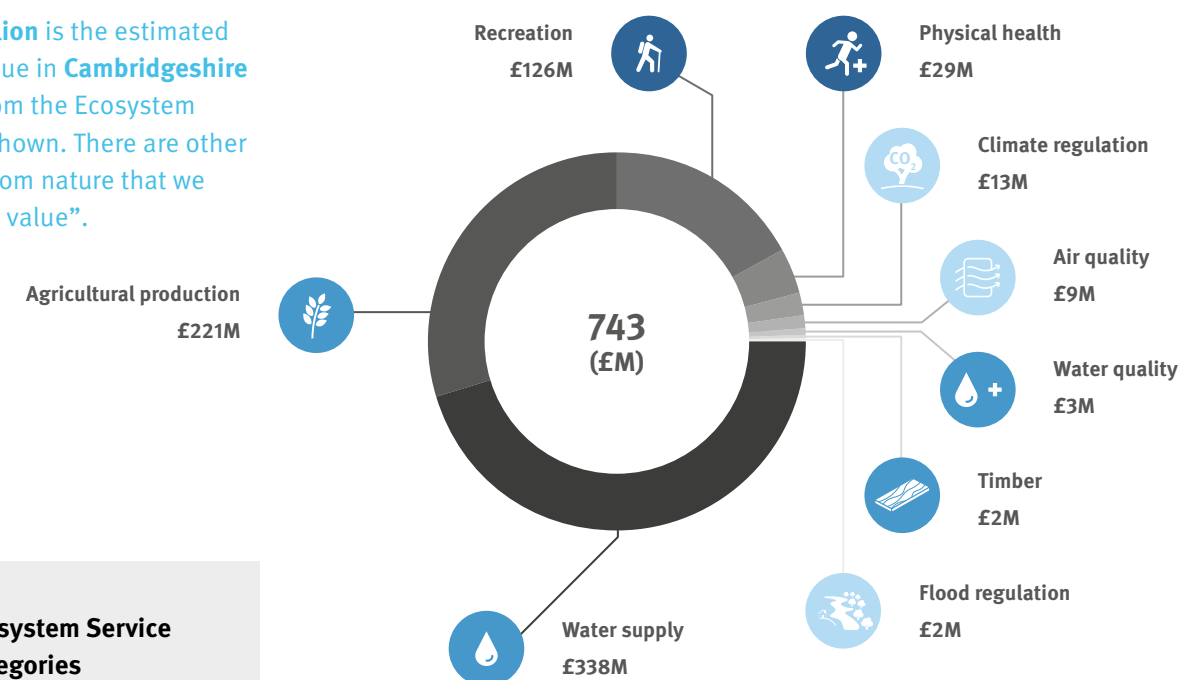


## The value of the natural assets in Cambridgeshire



## The value and benefits from Ecosystem Services in Cambridgeshire

“£743 million is the estimated annual value in Cambridgeshire flowing from the Ecosystem Services shown. There are other benefits from nature that we cannot yet value”.



### Ecosystem Service Categories

- Regulating
- Provisioning
- Cultural

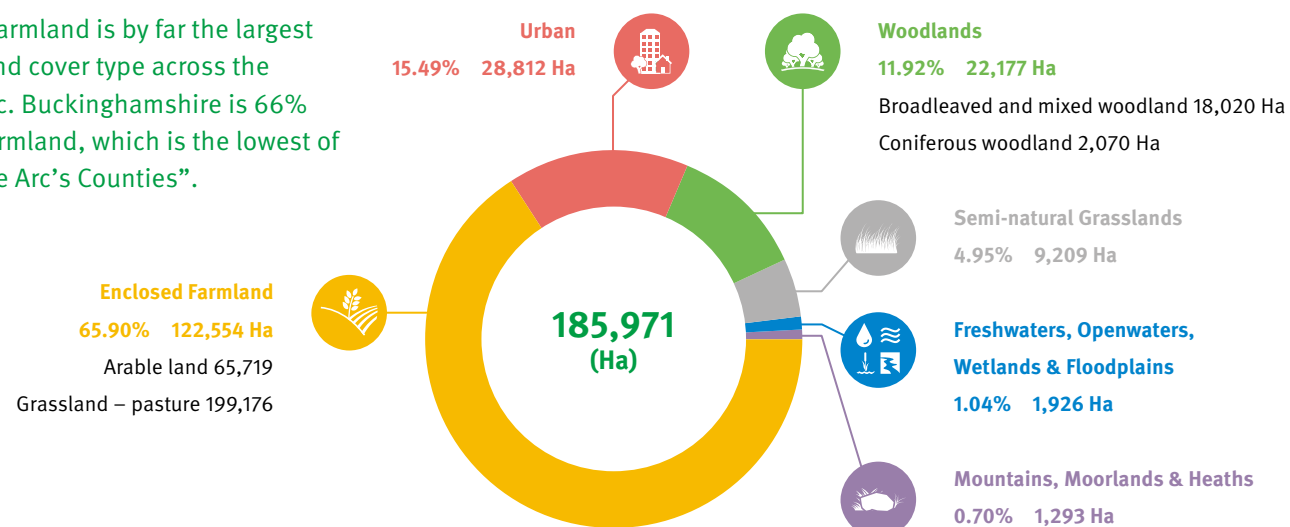


# Understanding the Benefit & Value of Natural Capital

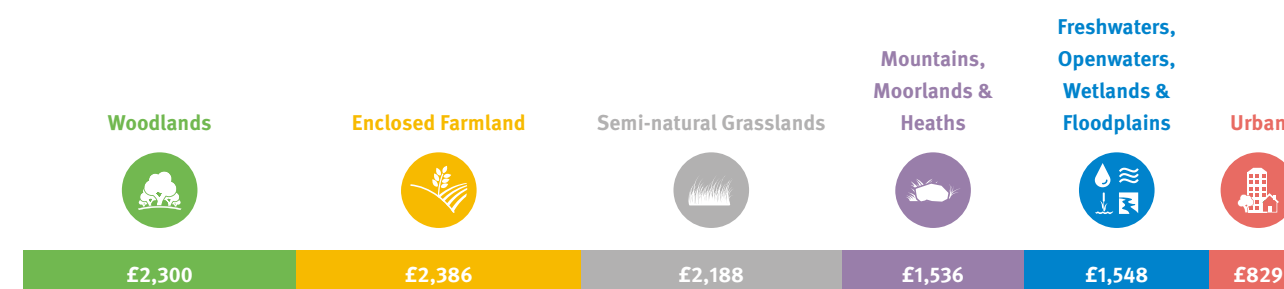


## The land cover types in Buckinghamshire by area

“Farmland is by far the largest land cover type across the Arc. Buckinghamshire is 66% Farmland, which is the lowest of the Arc’s Counties”.



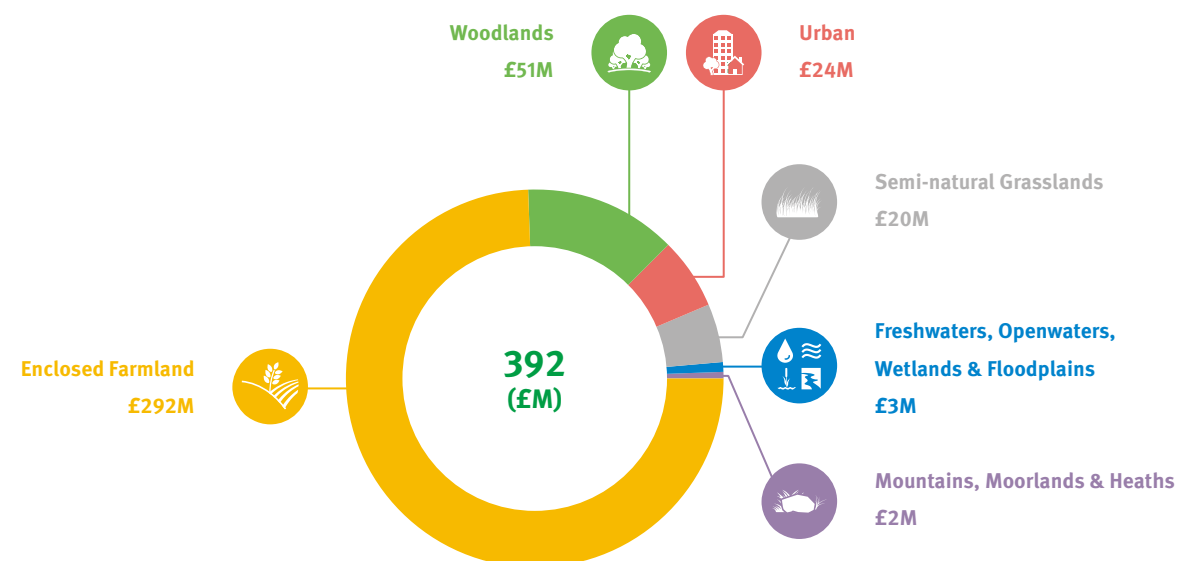
## Per hectare value of each natural asset



These values are an average. They are made up from direct valuations of more detailed habitat/land-use types, and through attributing the monetary valuations of water supply, recreational visits and river health to the habitat categories.

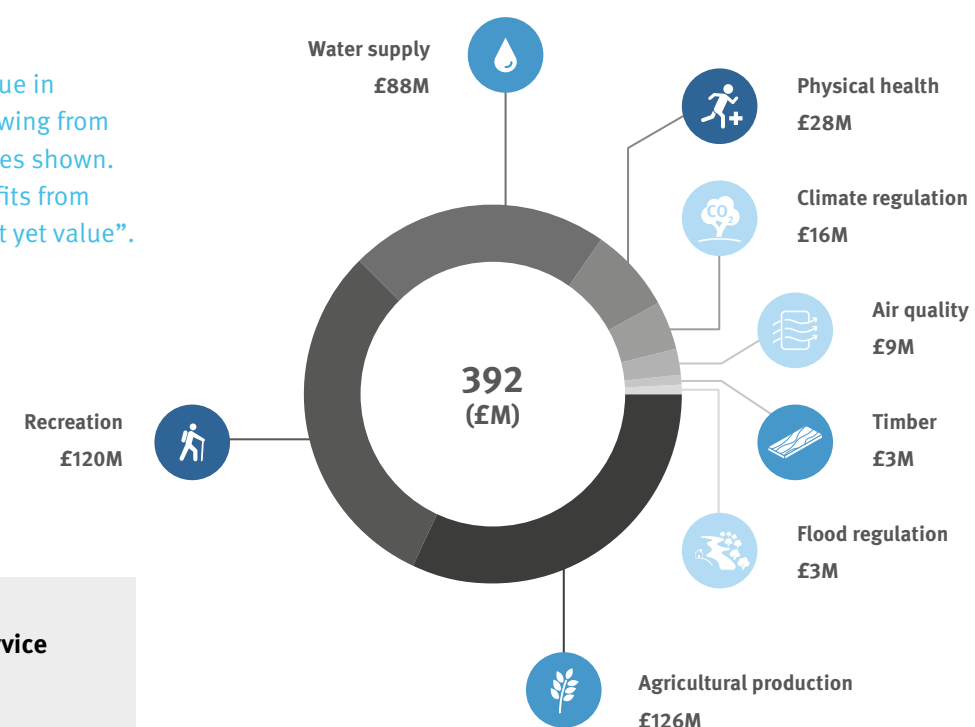


## The value of the natural assets in Buckinghamshire



## The value and benefits from Ecosystem Services in Buckinghamshire

“£392 million is the estimated annual value in Buckinghamshire flowing from the Ecosystem Services shown. There are other benefits from nature that we cannot yet value”.



### Ecosystem Service Categories

- Regulating
- Provisioning
- Cultural



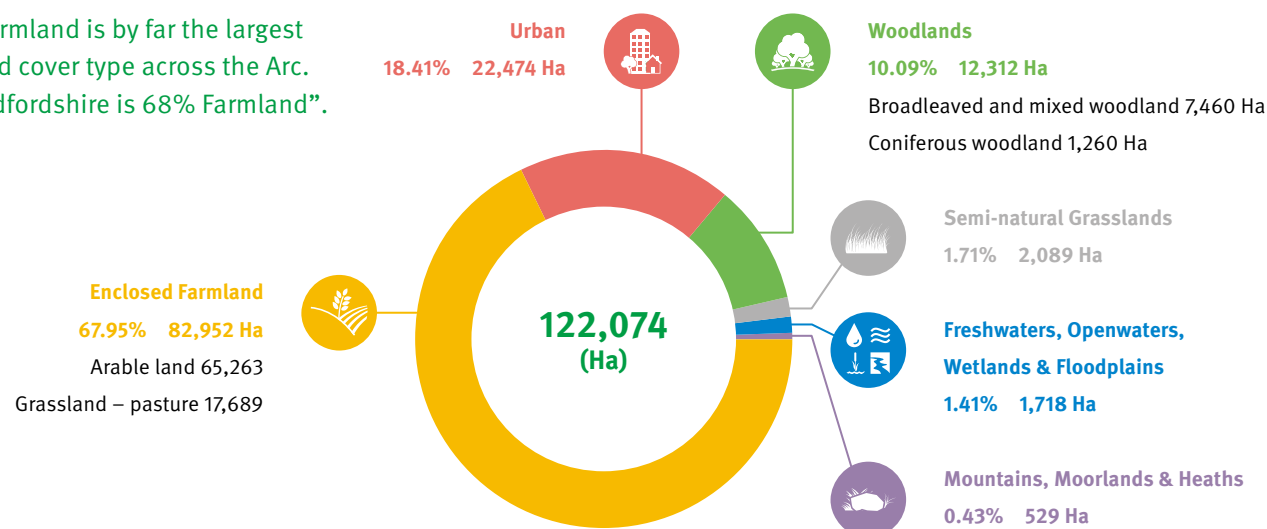


# Understanding the Benefit & Value of Natural Capital

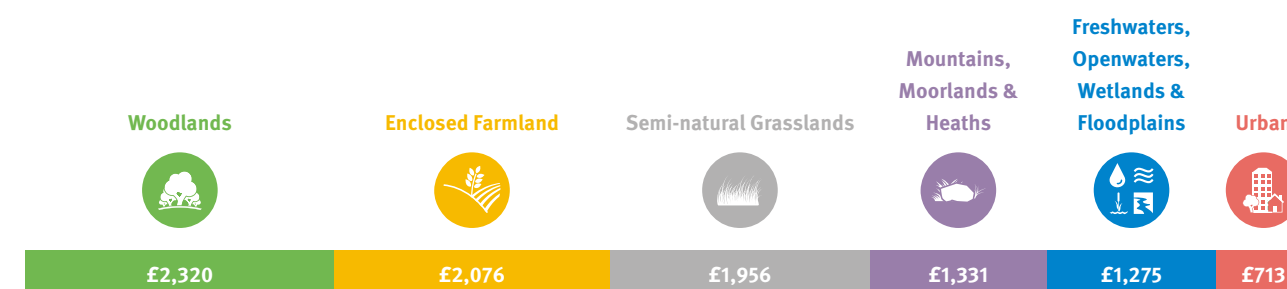


## The land cover types in Bedfordshire by area

“Farmland is by far the largest land cover type across the Arc. Bedfordshire is 68% Farmland”.



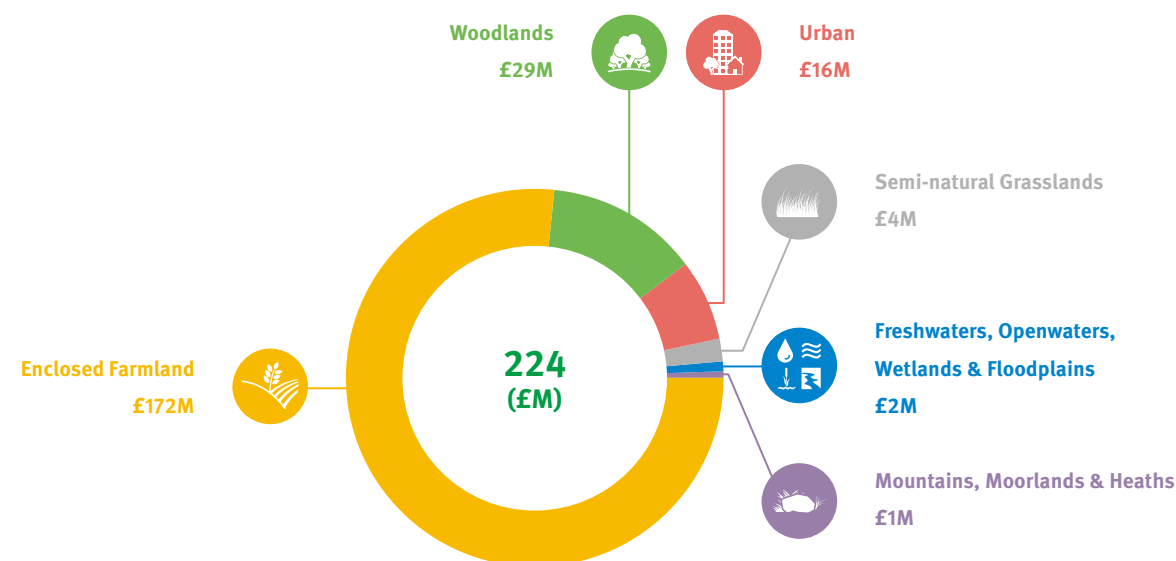
## Per hectare value of each natural asset



These values are an average. They are made up from direct valuations of more detailed habitat/land-use types, and through attributing the monetary valuations of water supply, recreational visits and river health to the habitat categories.

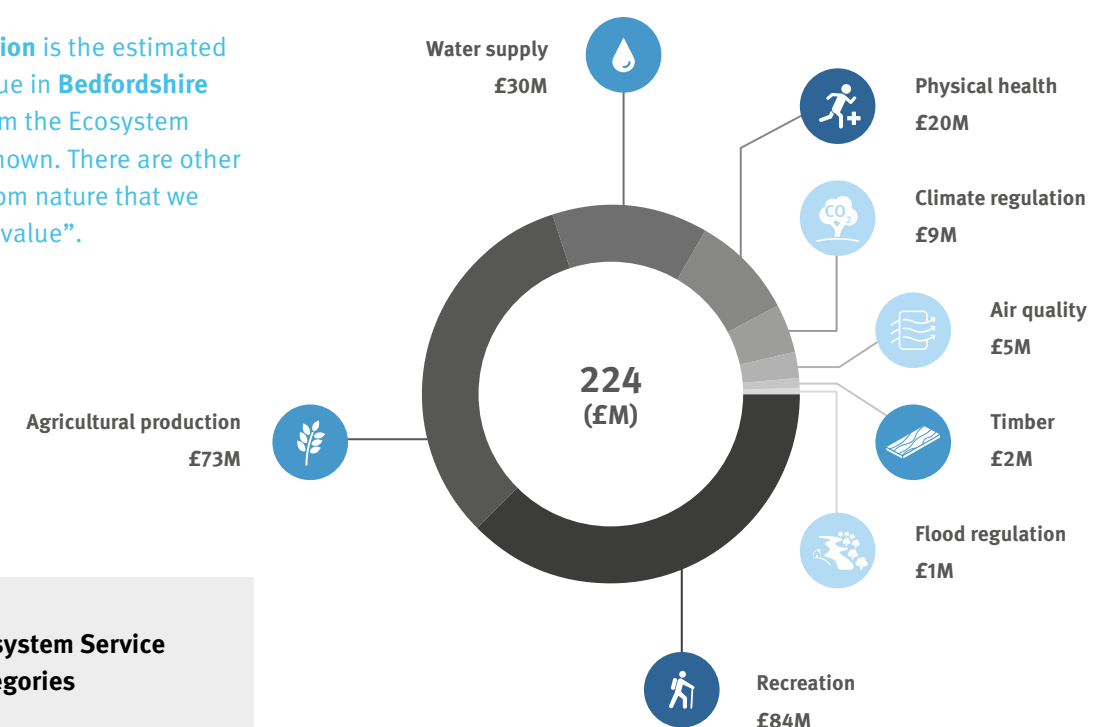


## The value of the natural assets in Bedfordshire



## The value and benefits from Ecosystem Services in Bedfordshire

“£224 million is the estimated annual value in Bedfordshire flowing from the Ecosystem Services shown. There are other benefits from nature that we cannot yet value”.



### Ecosystem Service Categories

- Regulating
- Provisioning
- Cultural





**OxCam**  
Local Natural Capital Plan

[OX.Cam@environment-agency.gov.uk](mailto:OX.Cam@environment-agency.gov.uk)

[oxcamlncp.org](http://oxcamlncp.org)