

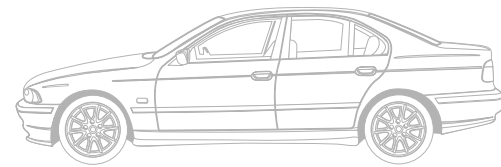


asw:temporis

PARKING SYSTEM



PARKING SYSTEM

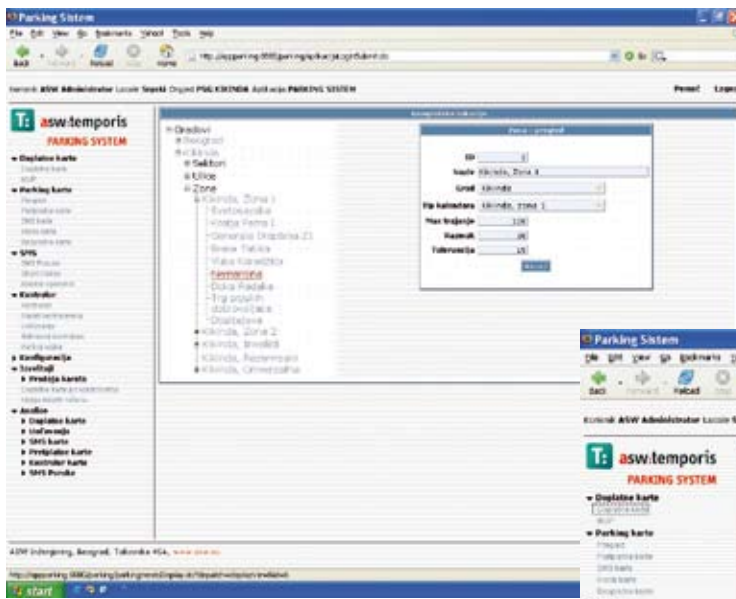


asw:temporis is a modern software solution for automated **on-line** management and operation of a parking service. On-line functions allow both the tracking and the billing of parking either through SMS or parking-cards, the control of payment via PDA devices, internal control of parking attendants work, communication with the DMV/Police etc. All the data in the system is centralized and integrated, and the reports provided by the system are timely and error free.

The system also includes advanced functions allowing the configuration and calculation of both tariffs and parking time in accordance with previously defined parking zones. Every parking zone has its own tariff, area and time limitations and a pre-assigned number for SMS messages.

asw:temporis is highly integrated with the **asw:dominus** system (enterprise resource planning), which monitors and records the payments for regular and additional parking cards thus allowing a comprehensive management of the business operations. The solution is based on the latest communications and development technologies.

asw:temporis is a software solution tailored for all the cities that are determined to solve parking problems and efficiently manage available parking space.





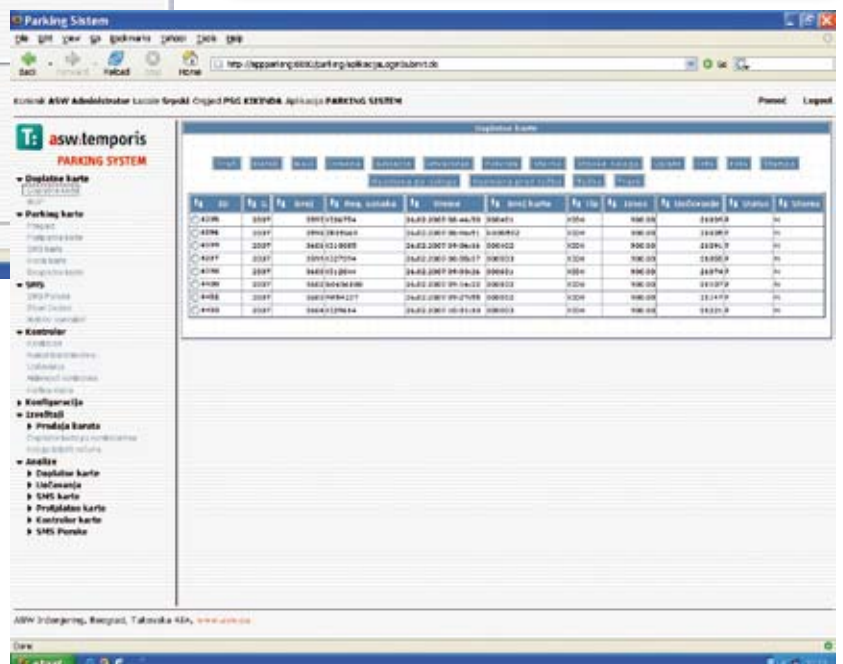
ZONA 1
60 Min.

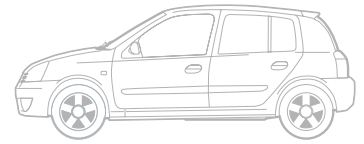
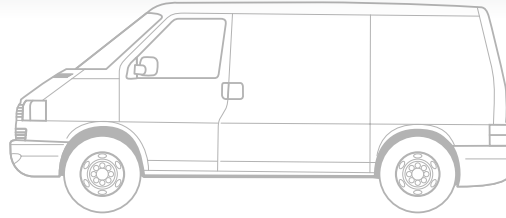
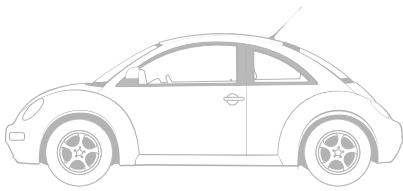


ZONA 2
120 Min.



ZONA 3
180 Min.





The **asw:temporis** integrates four different software packages with their respective functions:

1. SYSTEM ADMINISTRATION:

Administration of users allows full control through:

- User authentication
- User authorization

The parking system administration provides the following functions for recording and monitoring the activities of system users:

- Logging OLTP (Online Transaction Processing)
- TRACK – verification of entity content and data modification monitoring

System configuration allows:

- The definition of the hierarchic organizational structure
- TRACK mechanism for selected entities
- The definition of a set of business rules

2. BACKOFFICE

Records of additional payment cards:

- Additional payment cards
- Exchange of vehicle owner information with the DMV/Police

Records of parking cards:

- Prepaid cards
- Parking cards
- SMS cards

Monitoring the work of the parking attendants:

- Parking attendant definition
- Definition of parking attendants' authorization
- Review of reports with information on recorded regular/additional parking card

Back office system configuration - For a dependable operation of the parking system the following entities must be configured:

- Area - country, cities, zones, sectors, streets
- Calendar - holidays
- Cards - types of regular and additional parking cards
- Types of infractions
- Vehicle owners - rent-a-car agencies

Reporting

- Operational reporting
- Parking system functioning analysis

3. PDA SUPPORT

The PDA module is designed to control the activity of the parking attendants in the field. It is accessible via the PDA device Internet browser and optimized with regard to data flow through the network. It comprises the following functions:

- Vehicle reporting
- Record of parking cards
- Supply of additional payment cards
- Review of unresolved vehicle reports

4. SMS CENTER

The SMS center is a software module allowing the purchase of parking cards via SMS messages relying on the Web Service and the connection with the SMS provider.



REFERENCES

- City of Kikinda, Serbia
- City of Zaječar, Serbia
- City of Bijeljina Bosnia and Herzegovina
- City of Arandelovac, Serbia
- City of Herceg Novi, Montenegro



INTEGRATED IT SOLUTIONS!

Serbia

ASW Engineering
Takovska 45A
11 000 Belgrade
Phone +381 11 2071 400
E-mail: sales@asw.eu



Bosnia & Herzegovina

ASW Engineering
Miloša Obilića 81
76 300 Bijeljina
Phone +387 55 240 055
E-mail: sales@asw.eu



Slovenia

ASW d.o.o.
Leskoškova 4
1 000 Ljubljana
Phone +386 1 5249 035
E-mail: sales@asw.eu

www.asw.eu