

SkyScape[®] Architectural Canopies are available in a variety of profiles and styles. Our cantilevered sunshades help control sunlight entering windows and doorways. Choose from various louver blades and airfoil profiles to enhance the surrounding architecture. The cantilevered design eliminates the need for hanger supports and allows flexibility in multiple wall and building conditions. SkyScape canopies are fabricated using extruded aluminum components for unbeatable strength and durability. Capable of withstanding even the harshest weather conditions, they can last years without rusting or corroding. And because our manufactured canopies are welded, not thru-fastened, field installation is simplified to ensure a top-quality product with a fast completion time.



CANTILEVERED SUNSHADES



FEATURES

Engineered
Fascia Options
Louver / Blade Options
Strength & Durability
Finish Options

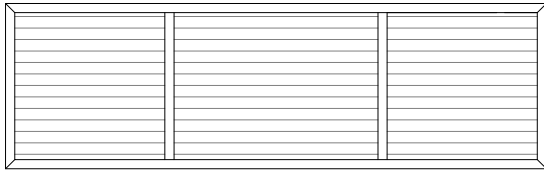
TYPE OF BUILDINGS & APPLICATIONS

Retail Buildings
Education
Shopping Centers
Storefronts
Office Buildings
Parking Garages
Renovation Projects

CANTILEVERED SUNSHADES



SECTION DETAIL

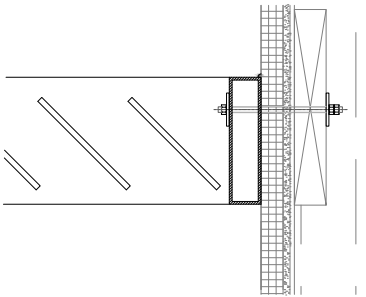


Plan



End

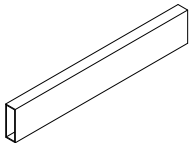
WALL MOUNT DETAIL



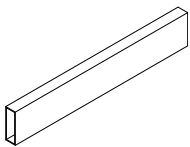
Cantilevered Sunshade Canopy
Connection with EIFS Wall



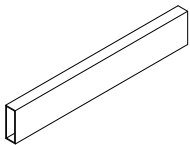
FASCIA OPTIONS



2" x 4"
Extruded Tube



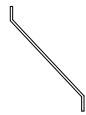
2" x 6"
Extruded Tube



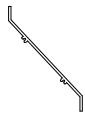
2" x 8"
Extruded Tube

DECKING OPTIONS

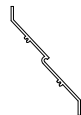
LOUVER BLADES



L-1
5.5" x 3.75"



L-1F
5.5" x 3.75"



L-7
5.125" x 3.75"

AIRFOILS



1.5" x 6"



2" x 8"