




ANTIGUA®
APPAREL

Arrive Comfortably

ANTIGUA GOLF SUMMER 2023

TABLE OF CONTENTS

MEN'S PERFORMANCE FASHION

PAGE 4

WOMEN'S PERFORMANCE FASHION

PAGE 8



At Antigua Apparel, we believe that life is a **journey**,
made up of moments.

Moments in your day
and in **your game.**

You'll experience these **moments everywhere.**
In what you do.
In how you feel.
In what you wear.

You never know when these
moments will arrive
but when they do...

Arrive Comfortably.

DESIGN FIRST APPROACH

We are committed to developing versatile apparel that is trend driven. We also make sure we use the best fabrics available, which ensures easy movement and extreme comfort. This formula leads to superior product that allows our customers to look great and feel great on and off the golf course.

DRIVEN BY FABRIC & TECHNOLOGY

Our 2023 Summer Golf Collections feature a number of styles that use a variety of new poly fabrications. The poly fabrics provide both functional and styling benefits. Ensuring that our products perform for our customers lifestyle.

POLY FABRIC BENEFITS & FEATURES

- Lightweight & breathable
- Wrinkle resistant
- Moisture-wicking
- Withstands abrasion & discoloration
- Maintains quality & color over time

MATTE

94% POLYESTER / 6% SPANDEX
180gsm

- Dull matte in appearance
- Slightly drier touch



SHEEN

94% POLYESTER / 6% SPANDEX
180gsm

- Smooth, lustrous surface
- Soft, satin feel and appearance

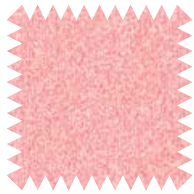


MEN'S SUMMER '23 APPAREL

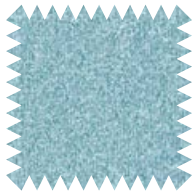


Score A104895

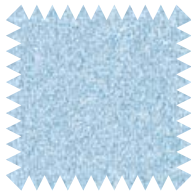
94% Polyester/6% spandex matte jersey CDP dyed heather short sleeve polo with self-collar, collar band, hem vents and matte button with Antigua triangle logo at right sleeve. **S-3XL**



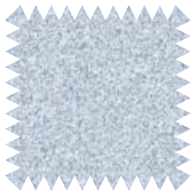
68W Coral Reef
Heather



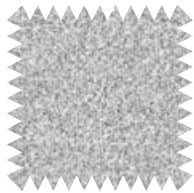
71W Bay
Heather



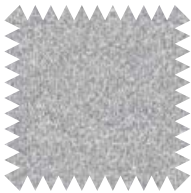
72W River
Heather



74W Nautical
Navy Heather



094 Black
Heather



73W Rock
Heather



68W Coral Reef
Heather

Elite A104906

94% polyester/6% spandex matte jersey with sublimated plaid print short sleeve polo with self-collar, collar band, hem vets and matte button with Antigua triangle logo at right sleeve. **S-3XL**



78W Moon/
Coral Reef Multi



76W Grey/
Nautical Navy Multi



77W Illusion Blue/
Sunlight Multi



75W Optic White/
Pistachio Multi



82W Banana/
Nautical Navy

Flagstick A104897

94% polyester/6% spandex matte jersey dyed fabric with sublimated geo print, short sleeve polo with self-collar, collar band, hem vents and matte button with Antigua triangle logo at right sleeve. **S-3XL**



79W River/
Optic White



81W Coral Reef/
River



82W Banana/
Nautical Navy



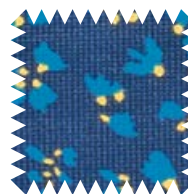
86W Illusion Blue/
Nautical Navy/Coral Reef

Chippie A104905

94% polyester/6% spandex matte jersey fabric with sublimated floral print, short sleeve polo with self-collar, collar band, hem vents and matte button with Antigua triangle logo at right sleeve. **S-3XL**



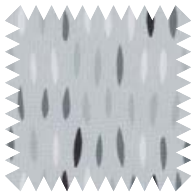
86W Illusion Blue/
Nautical Navy/Coral Reef



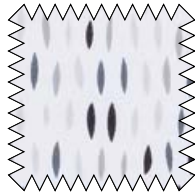
85W Wave/
River/Sunlight

Grassy A104900

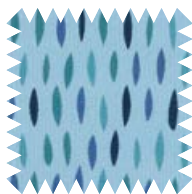
94% polyester/6% spandex sheen jersey with sublimated micro print, short sleeve polo with self-collar, collar band, hem vents and matte button with Antigua triangle logo at right sleeve. **S-3XL**



92W Grey/
Black Multi



93W Optic White/
Rock Multi



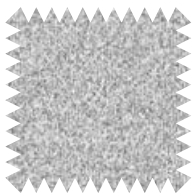
72X Skylight/
Nautical Navy Multi



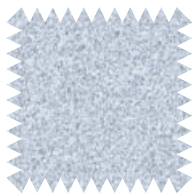
92W Grey/
Black Multi

Swing Set A104787

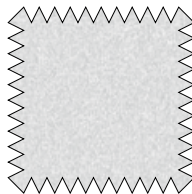
92% polyester/8% spandex matte jersey long sleeve 1/4 zip CDP dyed heather with mock collar and neck garage with Antigua triangle logo at right sleeve. **S-3XL**



094 Black
Heather



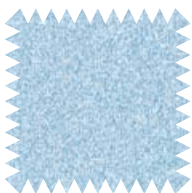
74W Nautical Navy
Heather



425 Light Grey
Heather



69W Skylight
Heather



72W River
Heather



425 Light Grey
Heather

WOMEN'S SUMMER '23 APPAREL



Women's Feature A104930

94% polyester/6% spandex matte jersey fabric with solid and sublimated conversional prints, short sleeve polo with self-collar, collar band, hem vents and matte button with Antigua triangle logo at right sleeve. **S-2XL**



19X
Banana

21X
Desert Sun

97W Desert Sun/
Optic White



22X Pale Peach/
Desert Sun Multi

23X Optic White/
Pale Peach Multi

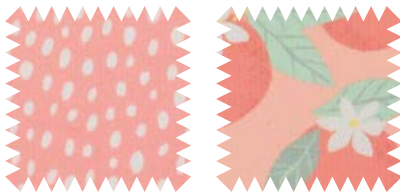
25X Slate Blue/
Banana Multi



97W Desert Sun/
Optic White

Women's S/L Approach A104811

94% polyester/6% spandex matte jersey fabric with solid and sublimated conversional prints, sleeveless polo with self-collar, collar band, hem vents and matte button with Antigua triangle logo at right sleeve. **S-2XL**



97W Desert Sun/
Optic White

22X Pale Peach/
Desert Sun Multi



23X Optic White/
Pale Peach Multi

25X Slate Blue/
Banana Multi



23X Optic White/
Pale Peach Multi



25X Slate Blue/
Banana Multi

Women's Wiki A104985

94% polyester/6% spandex matte jersey fabric with solid and sublimated conversional prints, long sleeve 1/4 zip with Antigua triangle logo at right sleeve. **S-2XL**



18X
Coral Reef



97W Desert Sun/
Optic White



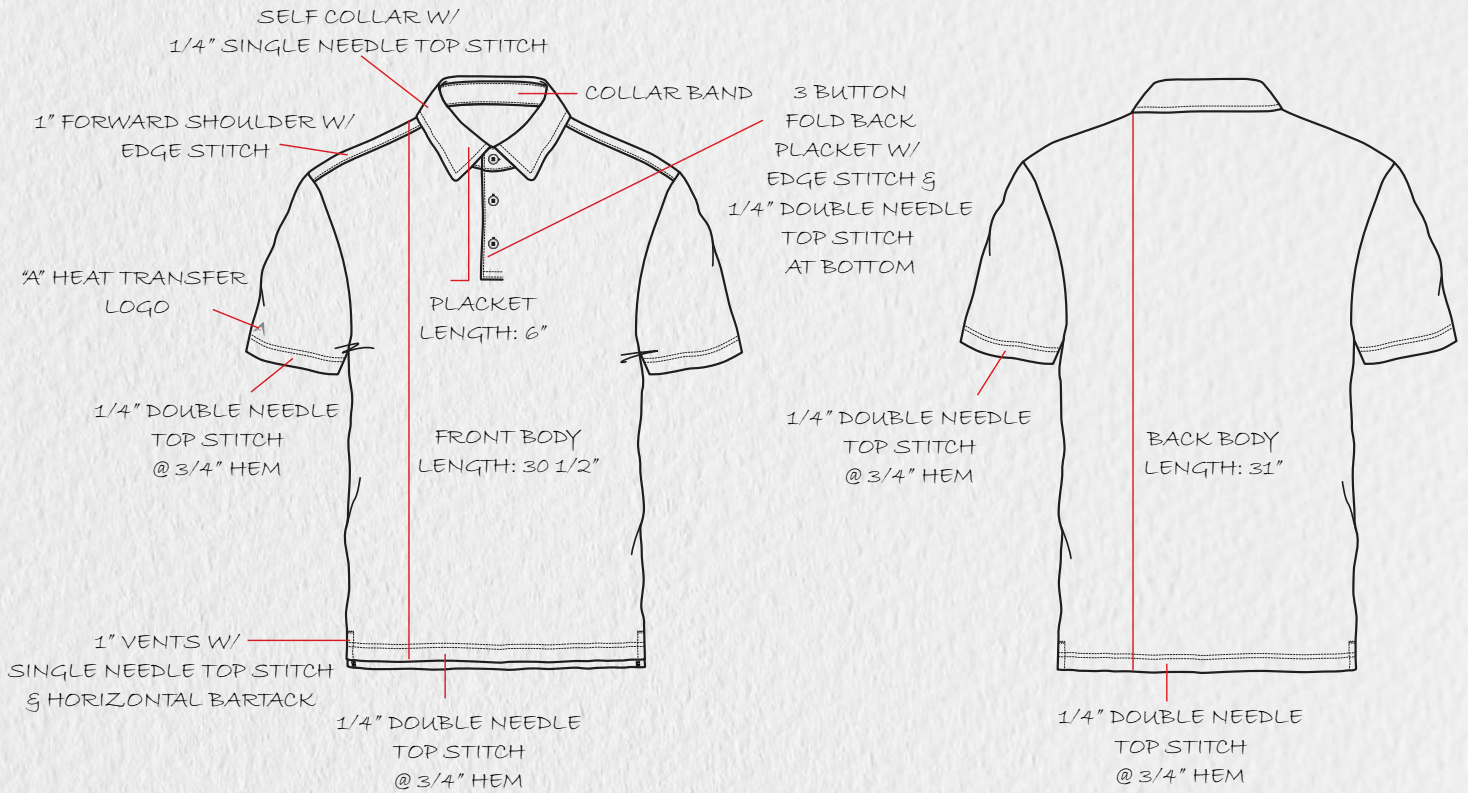
23X Optic White/
Pale Peach Multi



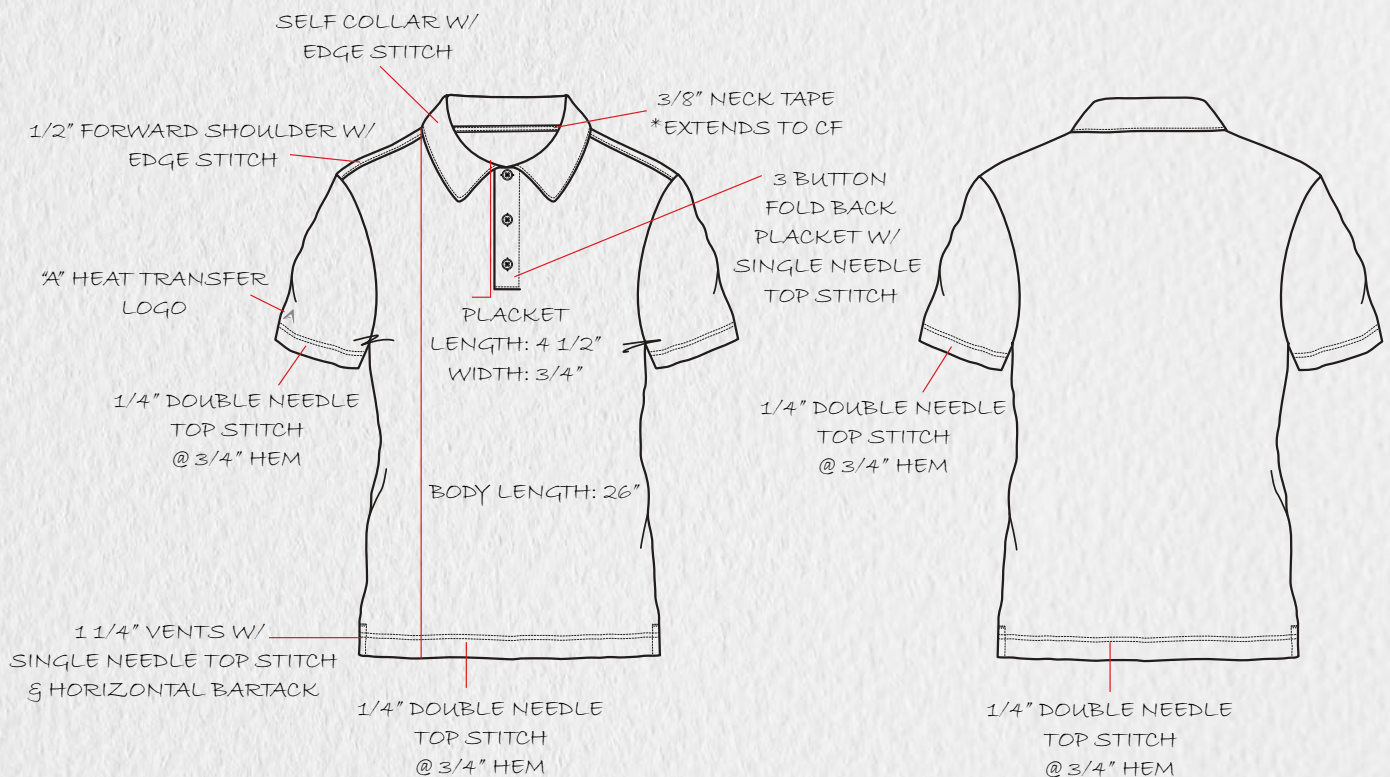
25X Slate Blue/
Banana Multi

POLO'S DESIGN + DETAILS

MEN'S POLO - SELF COLLAR



WOMEN'S FEATURE POLO





ANTIGUA®
A P P A R E L

Arrive Comfortably

ACI BRANDS INC.

2616 Sheridan Garden Dr, Oakville, ON L6J 7Z2

Tel: 905-829-1566 Fax: 905-829-1766

Email: golf@acibrands.com

SS06728-0722

www.acibrands.com