

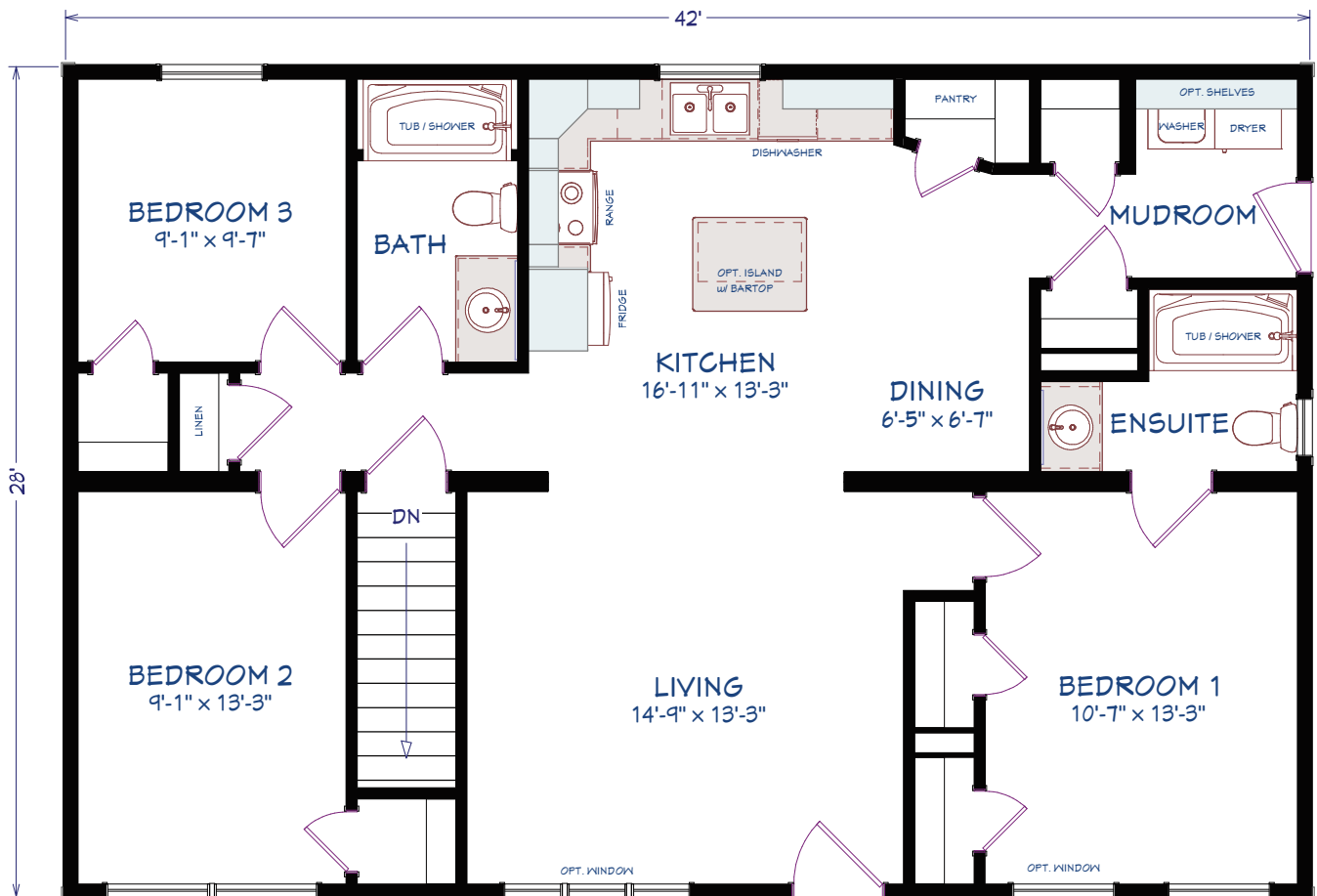
ML201
BUNGALOW / RANCH



3 BEDROOMS
2 BATHROOMS
1,176 SQUARE FEET
42' x 28' DIMENSIONS

OPTIONS

- Large dormer
- Mulled living room window
- Second coach light
- Upper window grills
- 3 1/2" Window trim
- Appliances
- Coloured front door



3 BEDROOMS, 2 BATHROOMS
1176 sq ft