



The  
Pointe

**HANNAH JONES**

Sales Advisor

+1 (801) 231.3443

[hannah@destinationpropertiesutah.com](mailto:hannah@destinationpropertiesutah.com)

**NVGTE**

**DESTINATION  
PROPERTIES**  
*Real Estate Professionals*

 **BERTOLDI  
ARCHITECTS**  
ARCHITECTURE • PLANNING • INTERIORS



## Property Overview

Located at the Wolf Creek Resort in Eden, UT, The Pointe is ideally located for year-round outdoor activities. This is a rare piece of property that allows all 48 condo units to overlook fairways 10 & 11. After a day of playing in the outdoors, owners can relax by the fire looking at the 10th green, soak in the hot tub, or walk up fairway 10 to the clubhouse for dinner. Perfect for full time residence, vacation home, or short-term rentals since it's zoned for nightly rentals.



### Located at Wolf Creek Resort

A 2,800 acre master planned active lifestyle community with miles of trails, dedicated open space, 18 hole championship golf course, fitness center, and Adventure Center for sports equipment rentals and tours.



### Zoned for Nightly Rentals

The Pointe is located in a resort area that the County has permanently approved for overnight rental accommodations.



### HOA Management

Management will address all your needs while you're away including snow removal, landscaping, and hot tub maintenance. HOA fees also include a 1G fiber optic connection.



### Furniture Package

A Furniture package is available to fully furnish your unit. This package include everything from linens, utensils, and artwork to make it move-in ready.

# Community Highlights

Ogden Valley is home to a broad range of unique experiences, year-round outdoor recreation and rustic history. It's removed from the urban bustle while providing all the amenities with multiple dining options to sample.



## Nearby:

- Wolf Creek Golf Course
- Powder Mountain - **8 minutes**
- Nordic Valley - **10 minutes**
- Snowbasin - **20 minutes**
- Pineview Reservoir - **5 minutes**
- Mountain Biking
- Fishing
- Hiking
- Salt Lake Airport - **1 Hour**

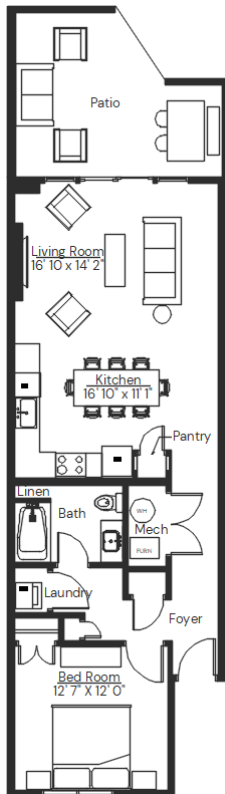
Reserve Now



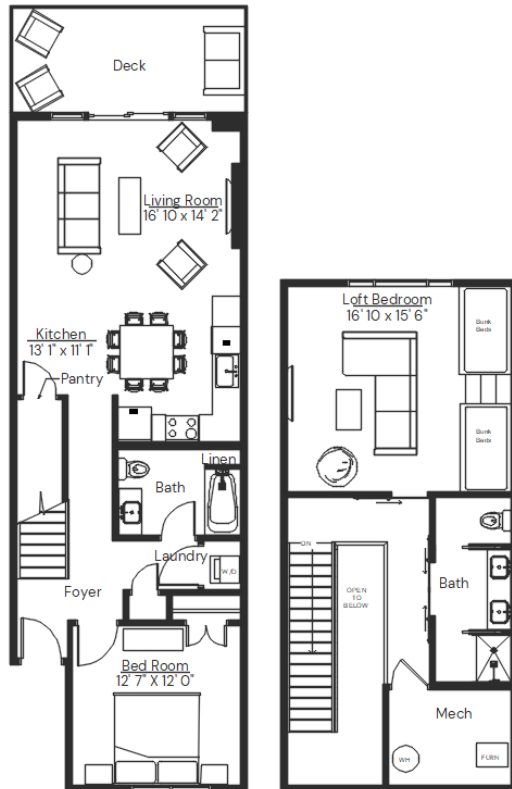
# Floor Plans

With a mountain modern vibe, you can count on a minimalist approach that is clean and welcoming with windows and corridors intended to maximize daylight for an open and comfortable feel. Two finish packages\* are available for four different floor plans ranging from a one bedroom with a queen sleeper sofa to a 3 bedroom loft with the ability to sleep up to 10 guests.

## 1 Bedroom



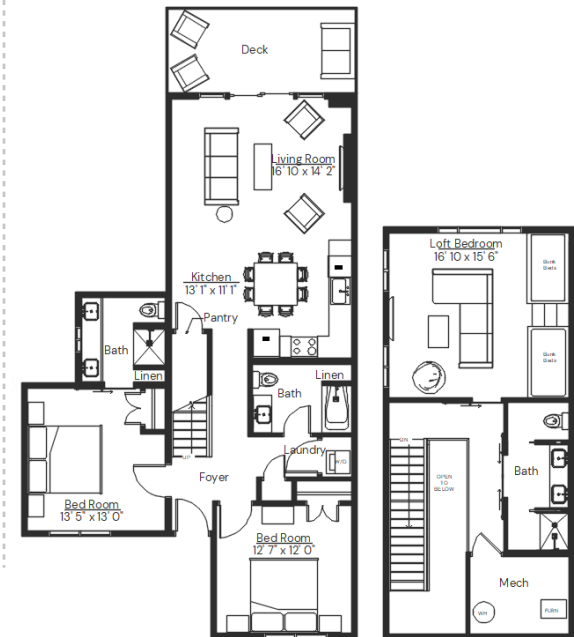
## 2 Bedroom Loft



## 2 Bedroom



## 3 Bedroom Loft

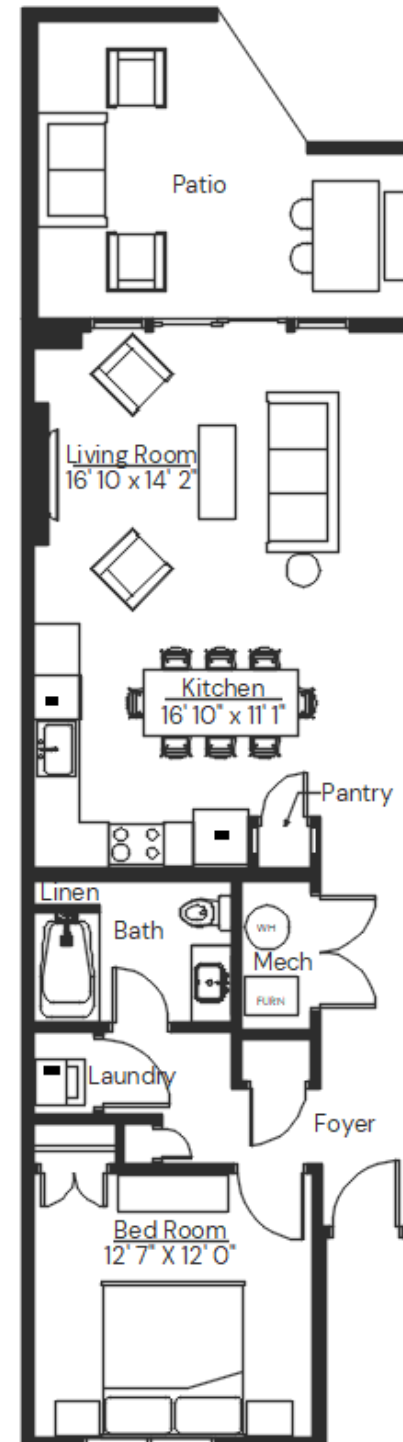


# 1 Bedroom

1 Bedroom layout

<b>Total Area</b>	805 sq ft.
<b>Bedrooms</b>	1
<b>Bathrooms</b>	1
<b>Sleeps</b>	4
<b>Features</b>	Open Floor Plan

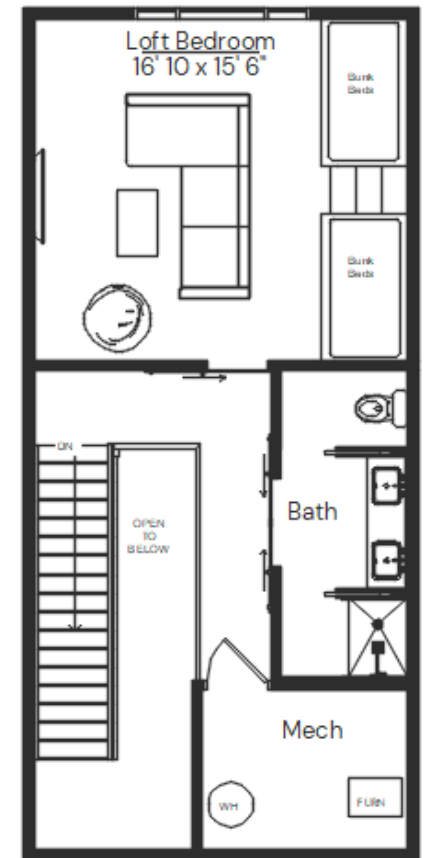
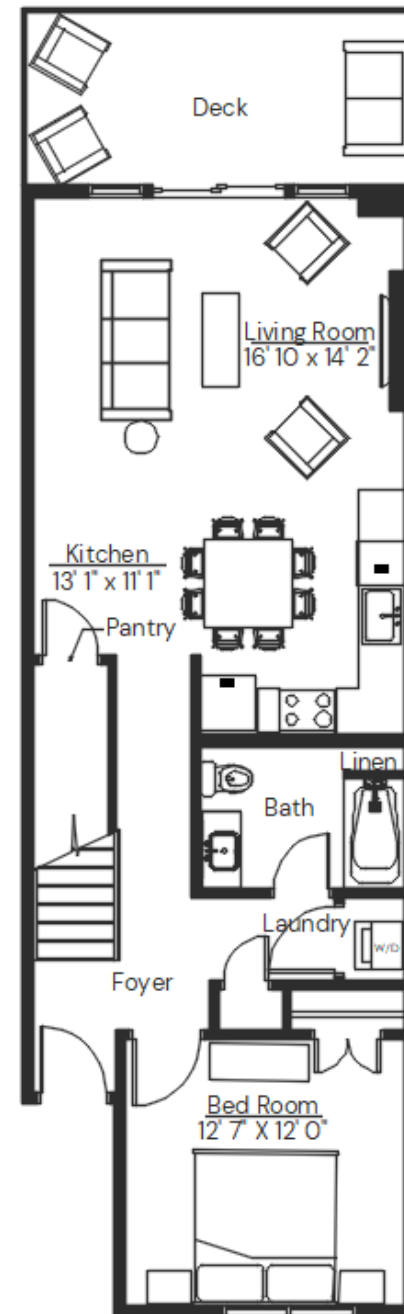
\*Floor plans and prices may not represent final finishes and can be subject to change.



# 2 Bedroom Loft

2 Bedroom Loft Layout

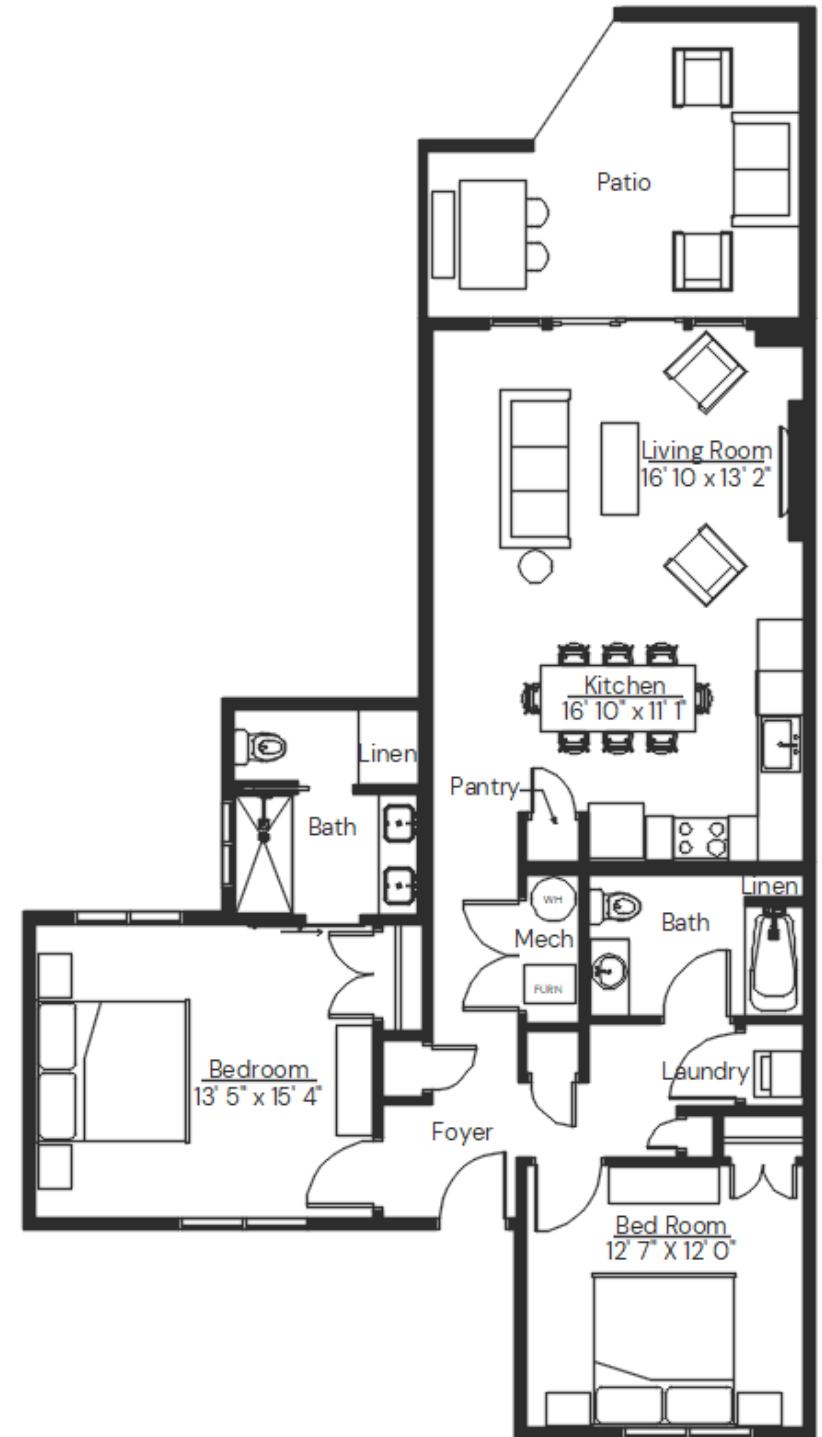
Total Area	1,438 sq ft.
Bedrooms	1
Bathrooms	2
Sleeps	8
Features	4 Bunk Beds in Loft



# 2 Bedroom

2 Bedroom layout

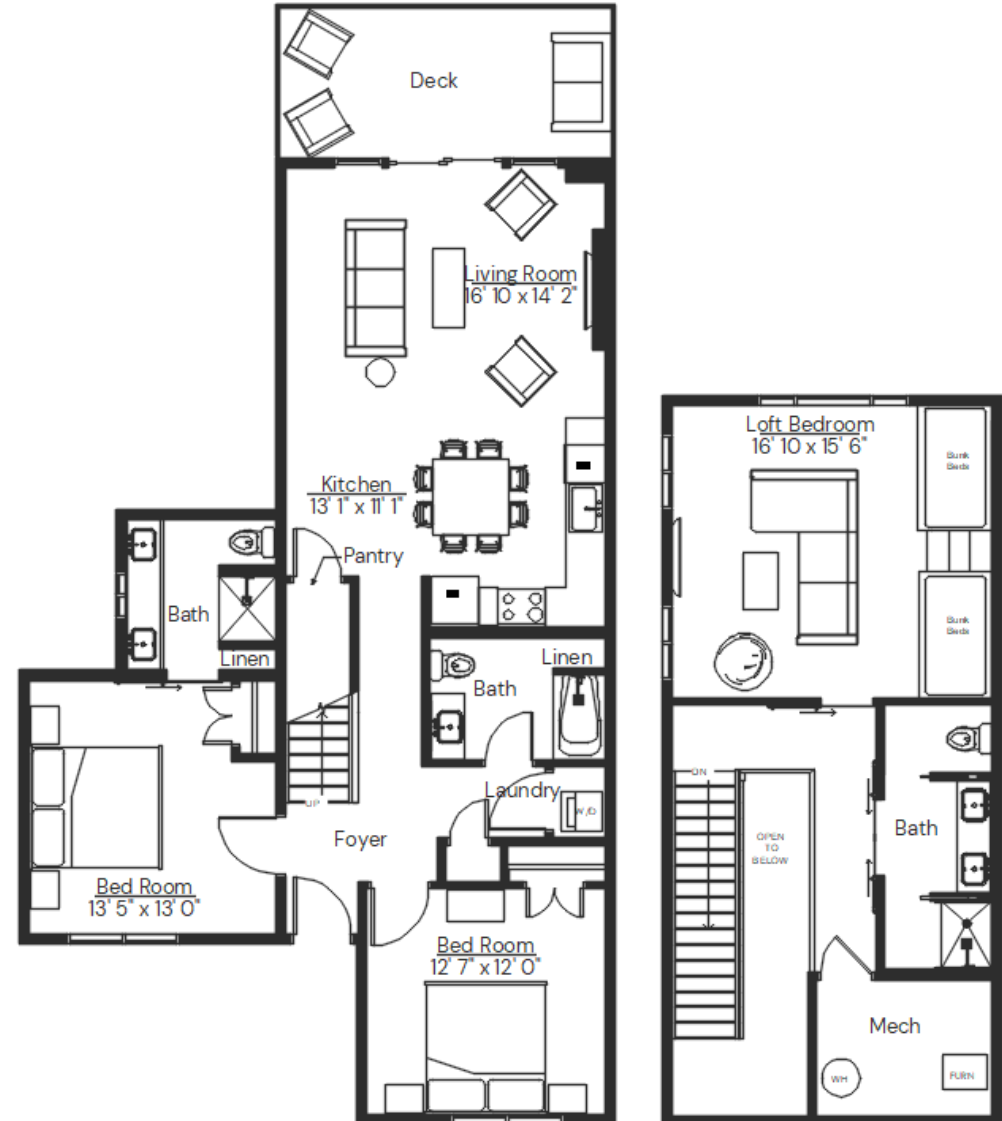
Total Area	1,136 sq ft.
Bedrooms	2
Bathrooms	2
Sleeps	6
Features	Open Floor Plan



# 3 Bedroom Loft

3 Bedroom Loft layout

Total Area	1625 ft.
Bedrooms	3
Bathrooms	3
Sleeps	10
Features	Bunk Beds in Loft





**HANNAH JONES**

Sales Advisor

+1 (801) 231.3443

[hannah@destinationpropertiesutah.com](mailto:hannah@destinationpropertiesutah.com)

The  
Pointe