



# I-41 Project (Appleton to De Pere) Public Hearing

Virtual Hearing: Tuesday, July 27, 2021

In-Person: Wednesday, July 28, 2021, and Thursday, July 29, 2021

# Presentation Outline

- Project team
- Project location
- Project purpose and need
- Alternatives considered
- Environmental analysis
- Preferred alternatives
- Next steps



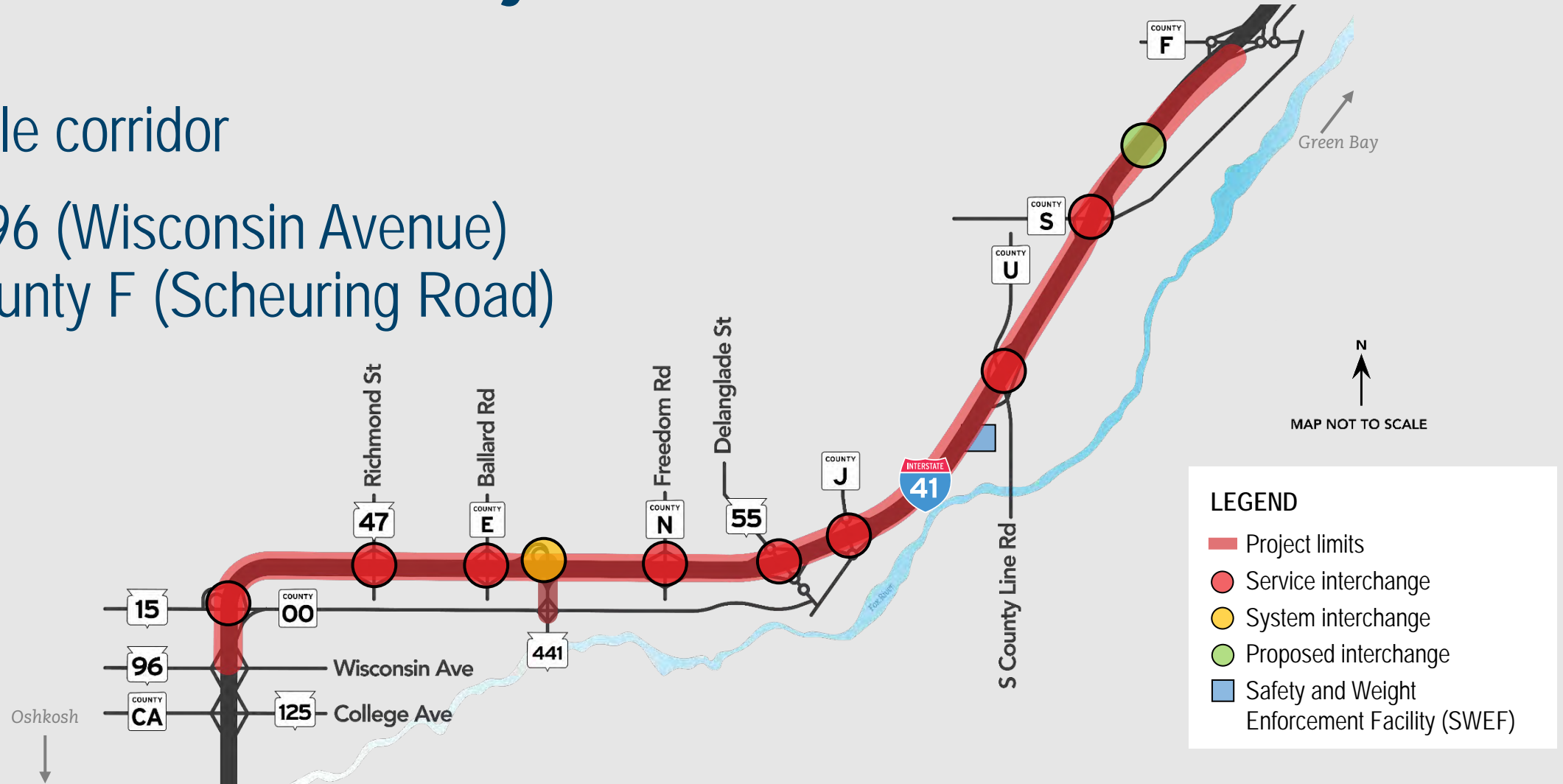
# Project Team

- Colleen Harris, Northeast Region Director
- Tom Buchholz, Northeast Region Deputy Director
- Chad DeGrave, Project Development Chief
- Kurt Peters, Project Supervisor
- Scott Ebel, Design Project Manager
- Bryan Lipke, Planning Project Manager
- Kathie VanPrice, Environmental Coordinator
- Melissa (Missy) Kok, Communications Manager



# Project Location

- 23-mile corridor
- WIS 96 (Wisconsin Avenue) to County F (Scheuring Road)



# Purpose and Need

- Provide a safe, reliable highway that meets interstate standards and addresses existing safety and operational deficiencies
- Address the outdated Wrightstown Safety and Weight Enforcement Facility (SWEF) to allow it to operate effectively with proposed improvements to I-41



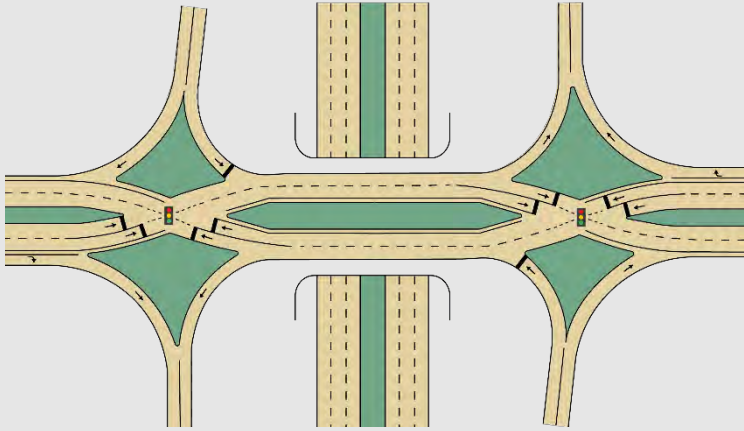
# Alternatives Considered

- No build
- I-41
  - Transportation Systems Management (TSM)
  - Transportation Demand Management (TDM)
  - Four lanes with hard shoulder running
  - Six lanes
- Overpass improvements

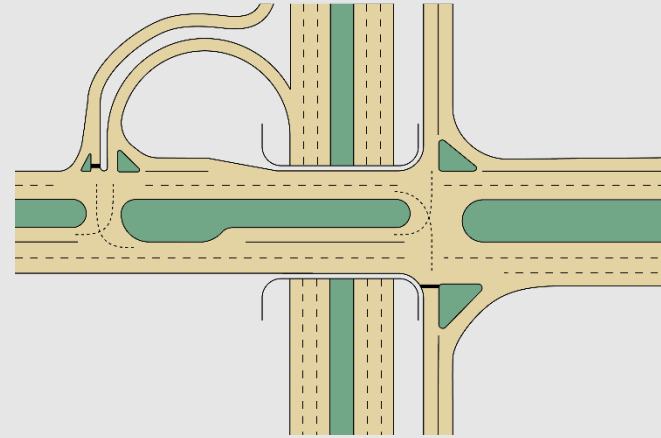


# Alternatives Considered

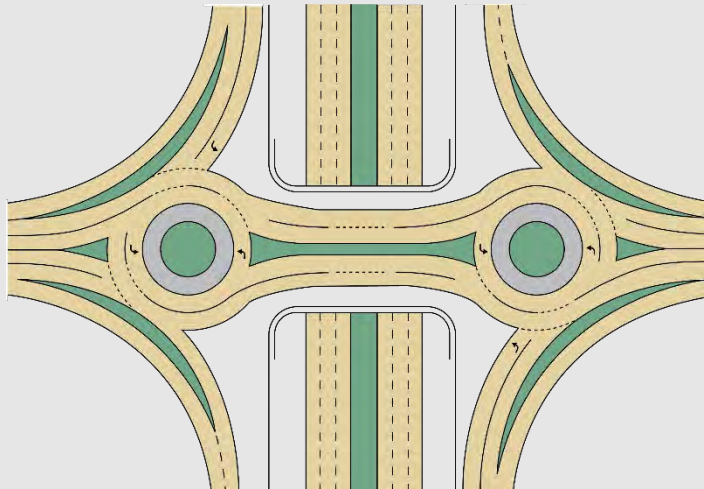
## Interchange Types



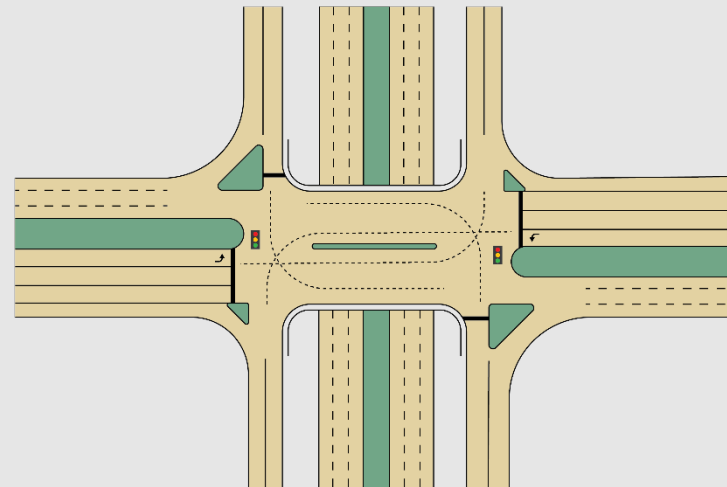
Diverging  
diamond  
interchange



Partial  
cloverleaf  
interchange



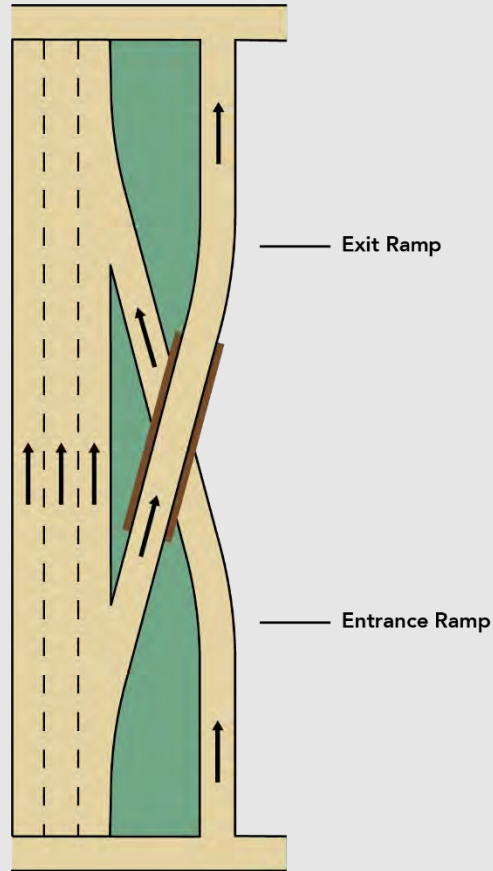
Diamond  
interchange  
with roundabouts



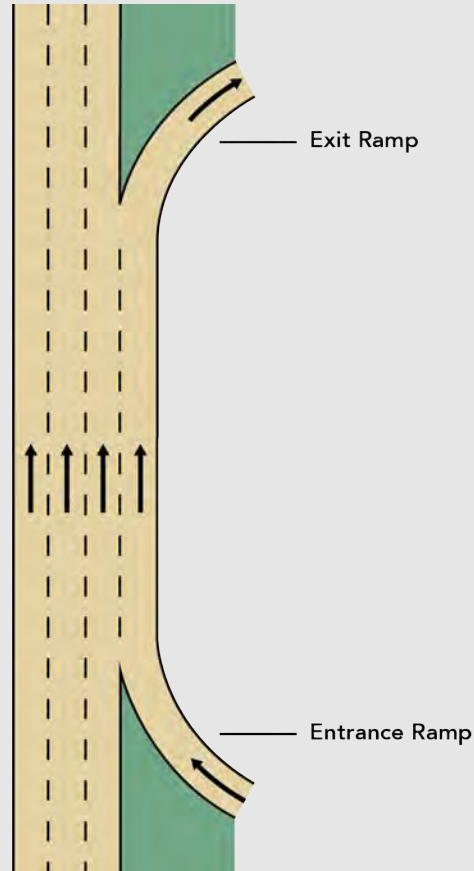
Diamond  
interchange

# Alternatives Considered

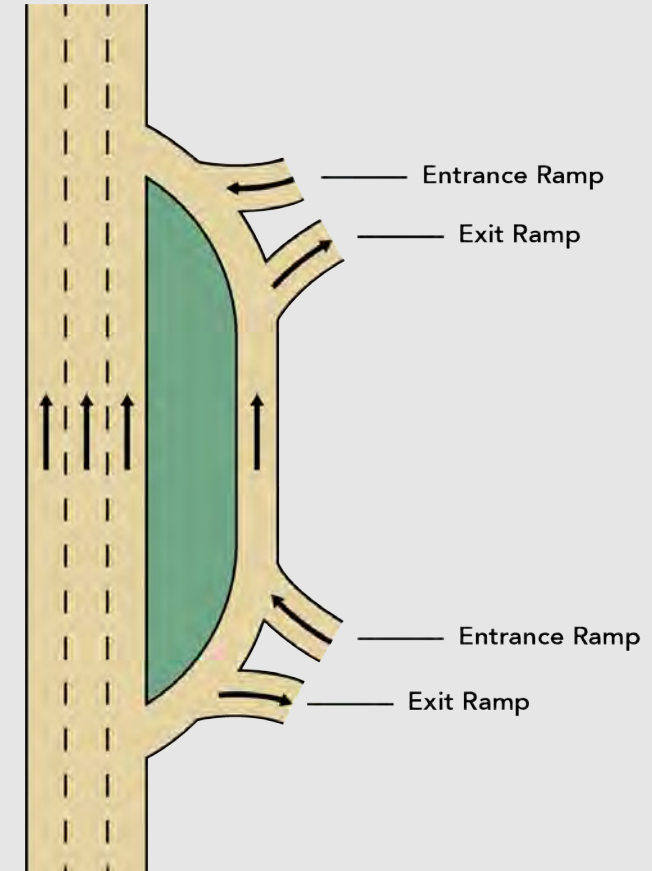
## Interchange Ramps



Braided ramps



Auxiliary lanes



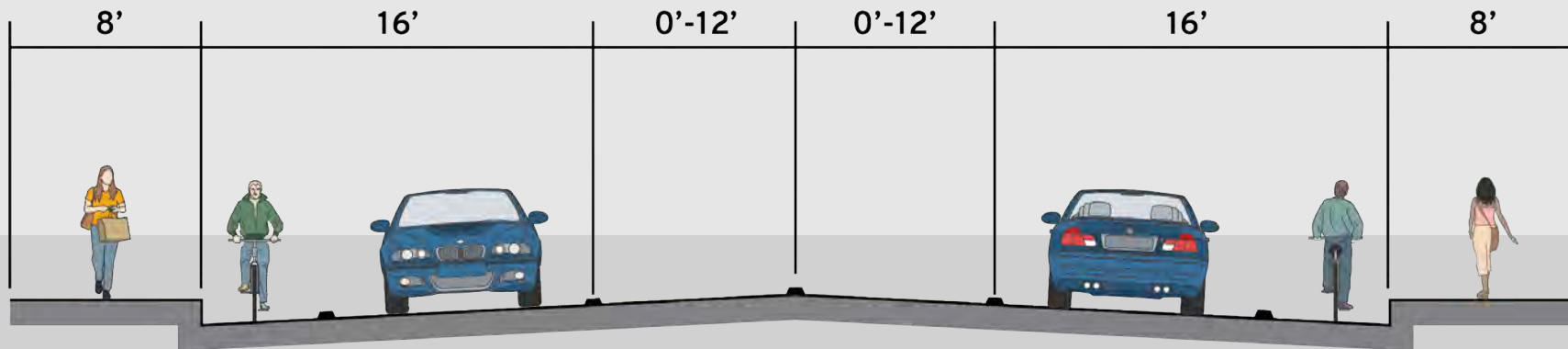
Collector-Distributor road



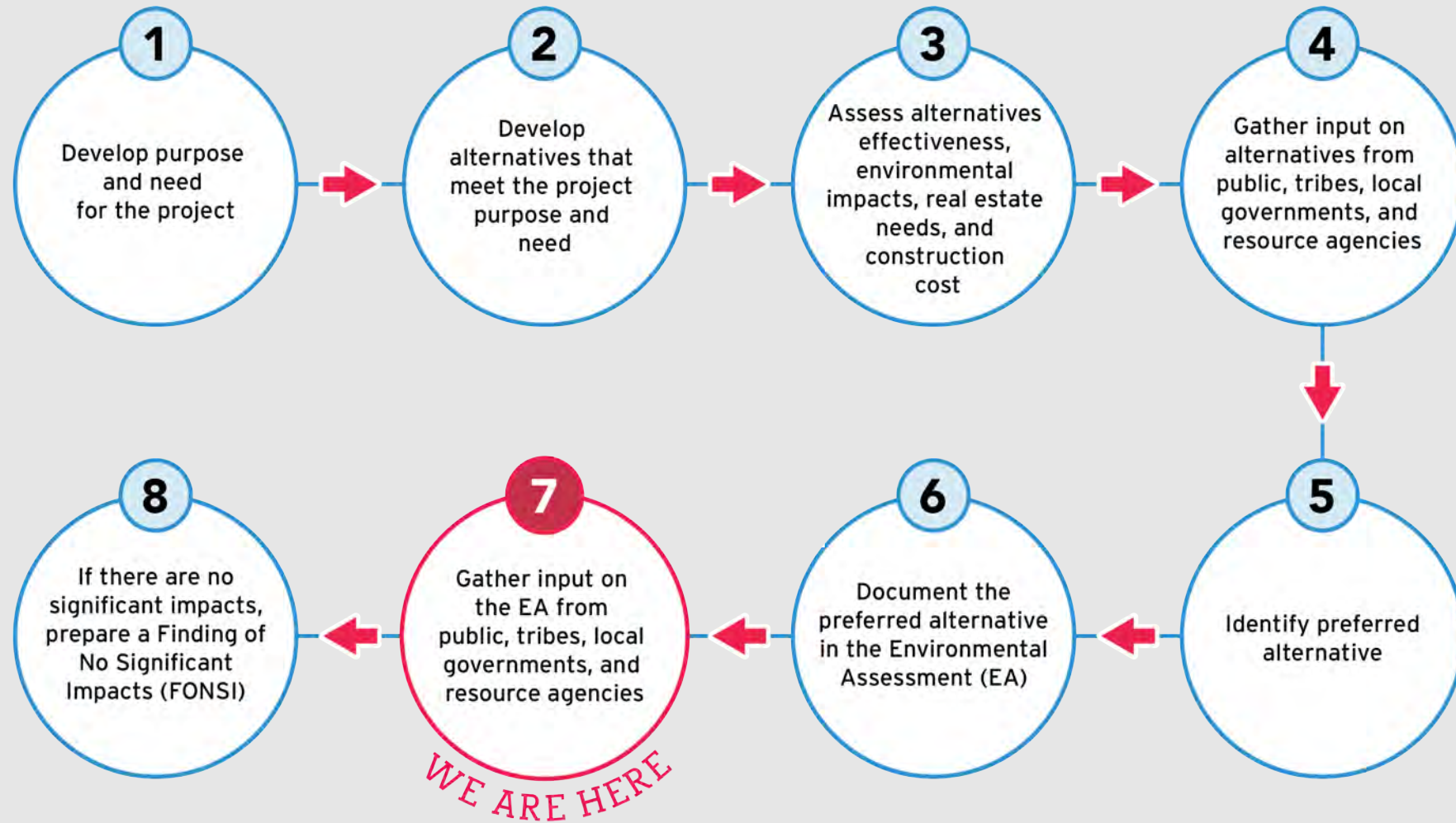
# Alternatives Considered

- Other project elements

- Combined Safety and Weight Enforcement Facility (SWEF) and Northeast Region State Patrol Post
- New salt shed at Outagamie County Department of Public Works (DPW)
- Address pavement needs at three existing park and ride lots
- Proposed bike and pedestrian accommodations on crossroads according to local plans



# Environmental Assessment Flow Chart



# Environmental Analysis

- Impacted environment

- Air quality
- Agriculture
- Business and economics
- Community/residential
- Noise
- Groundwater
- Floodplains
- Cultural resources
- Stormwater
- Surface water
- Threatened/endangered and protected resources
- Wetlands
- Hazmat

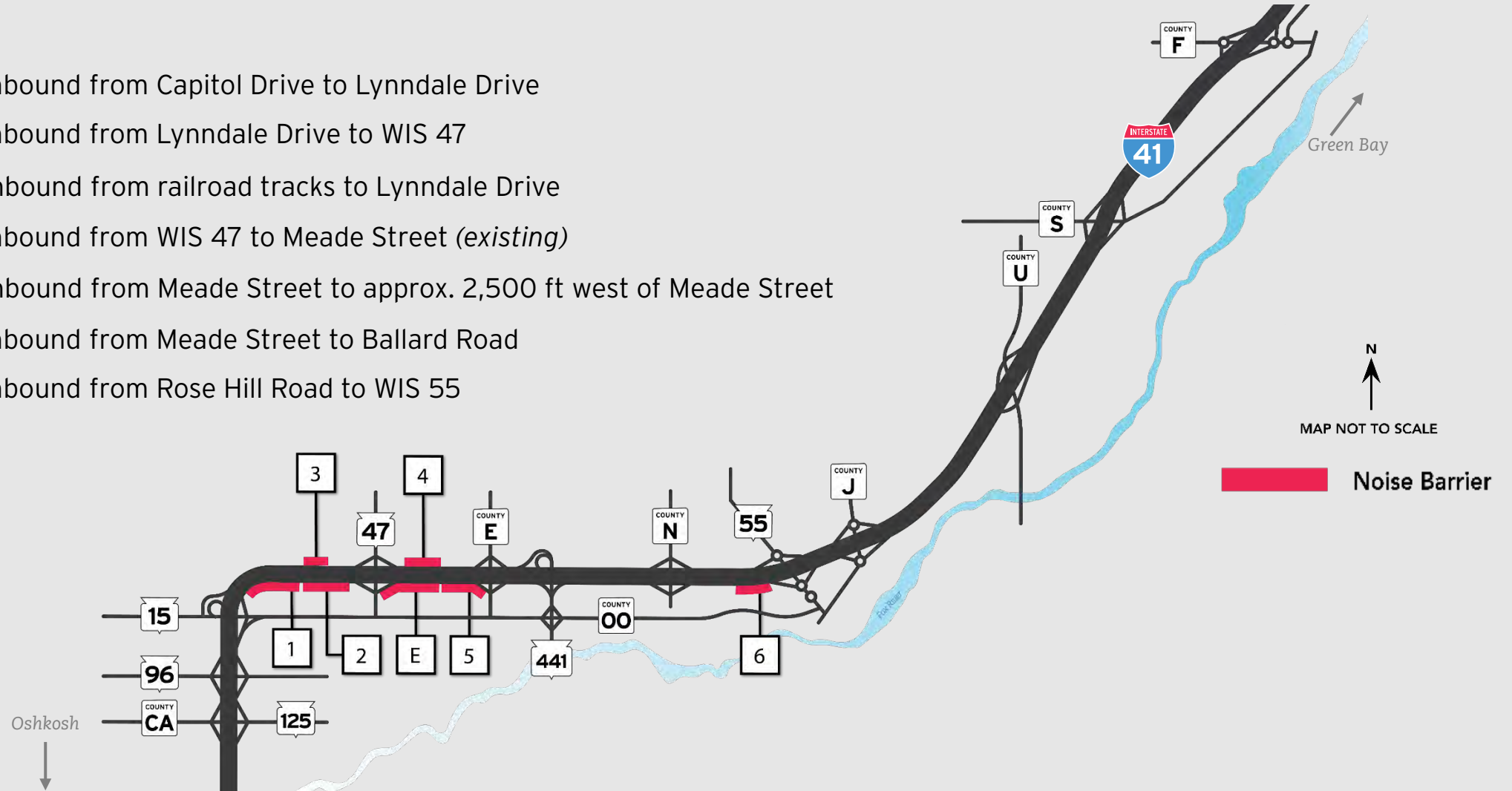
# Environmental Justice

- Executive Order 12898 on Environmental Justice
  - Analyses required to determine any disproportionately high and adverse effects to low-income and minority populations.
- Public participation strategies
  - Public involvement meetings and community group meetings
  - Newsletters (translated in Spanish and Hmong)
  - Email outreach
  - Social media
  - Online surveys
  - Solicit feedback from community-based organization leaders

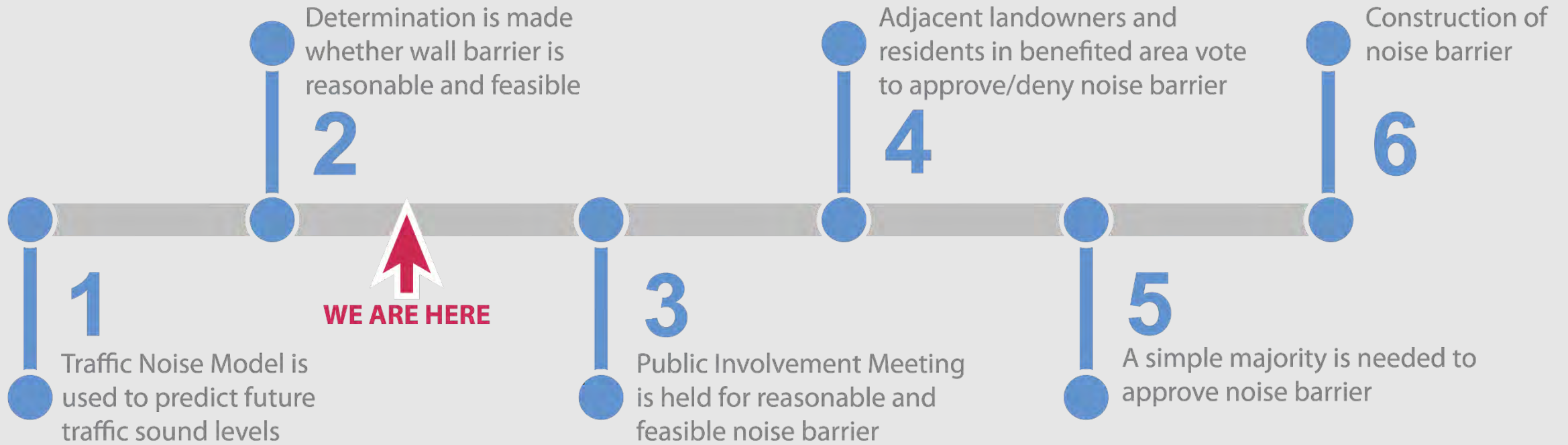


# Noise Barrier Locations

- 1** I-41 Northbound from Capitol Drive to Lynndale Drive
- 2** I-41 Northbound from Lynndale Drive to WIS 47
- 3** I-41 Southbound from railroad tracks to Lynndale Drive
- E** I-41 Northbound from WIS 47 to Meade Street (*existing*)
- 4** I-41 Southbound from Meade Street to approx. 2,500 ft west of Meade Street
- 5** I-41 Northbound from Meade Street to Ballard Road
- 6** I-41 Northbound from Rose Hill Road to WIS 55



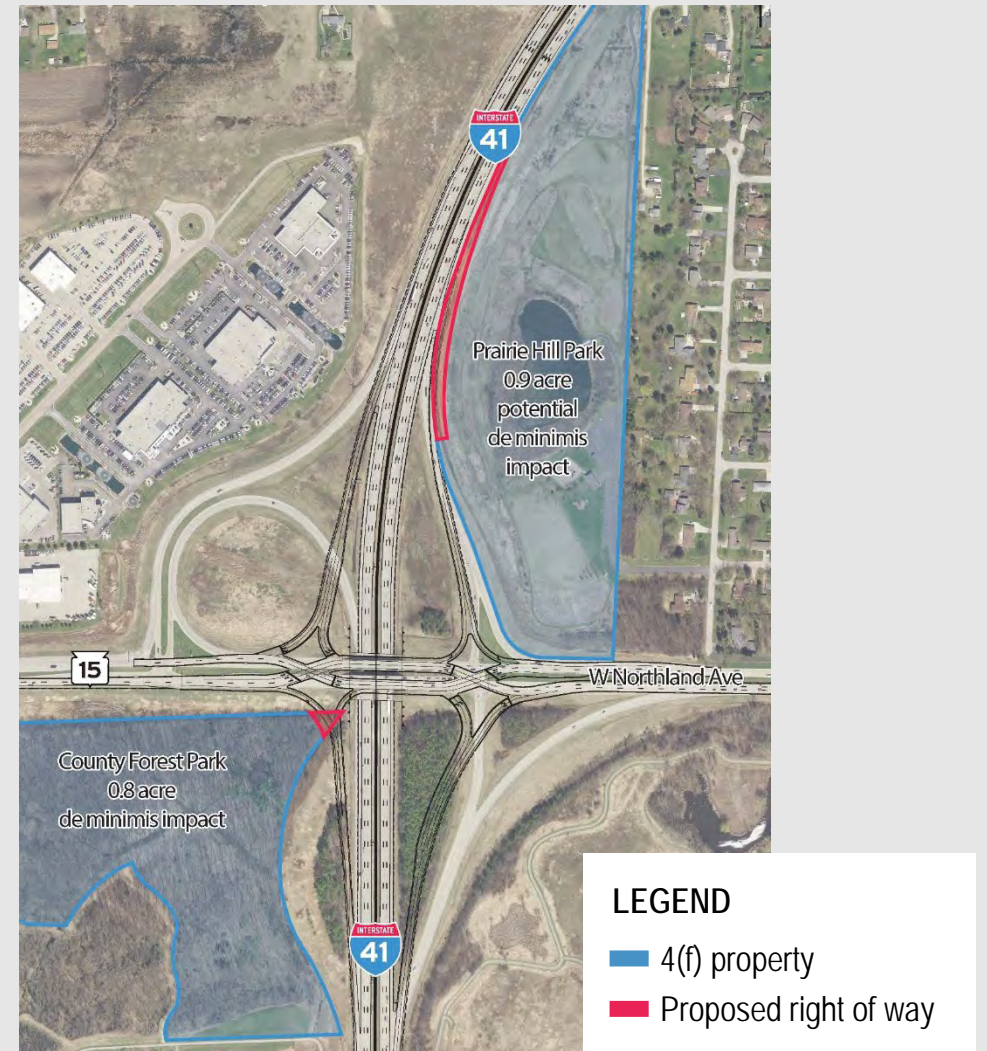
# Noise Barrier Process



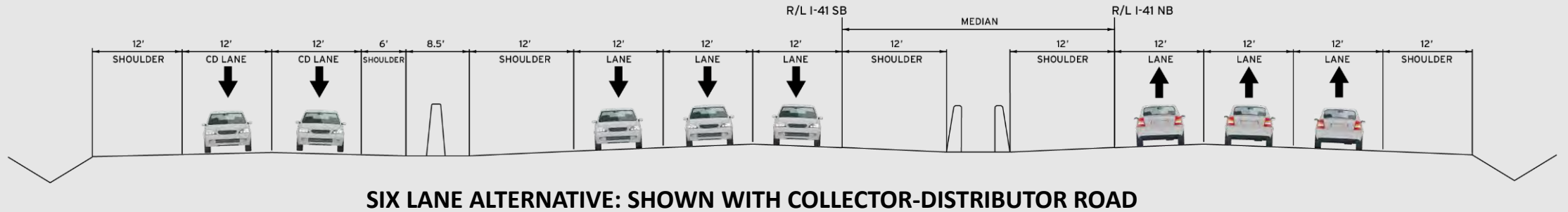
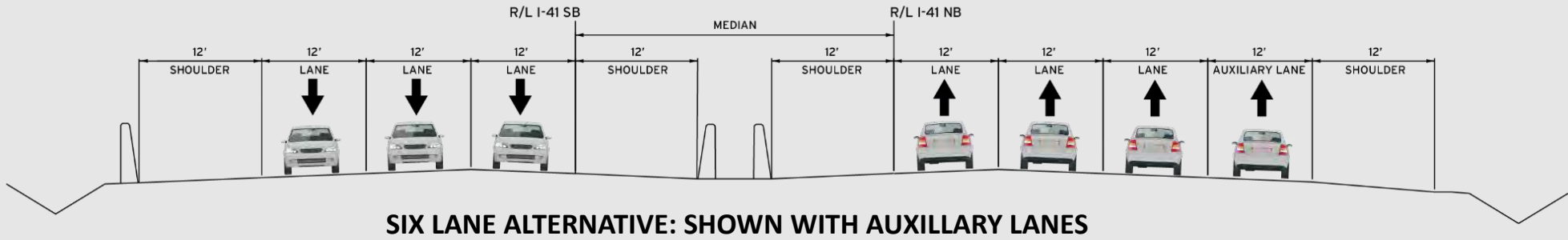


# Section 4(f) Impacts

- What is Section 4(f)?
  - 4(f) properties are publicly owned parks, recreation areas, wildlife or waterfowl refuges and any significant historical or archeological site
  - Review of 4(f) impacts required on all federally funded transportation projects



# I-41



Preferred Alternative:  
Six Lanes

## BENEFITS:



Improved  
safety



Improved  
traffic operations



# I-41

## WIS 96 – WIS 15/ County OO

### Preferred Alternative: Auxiliary Lanes

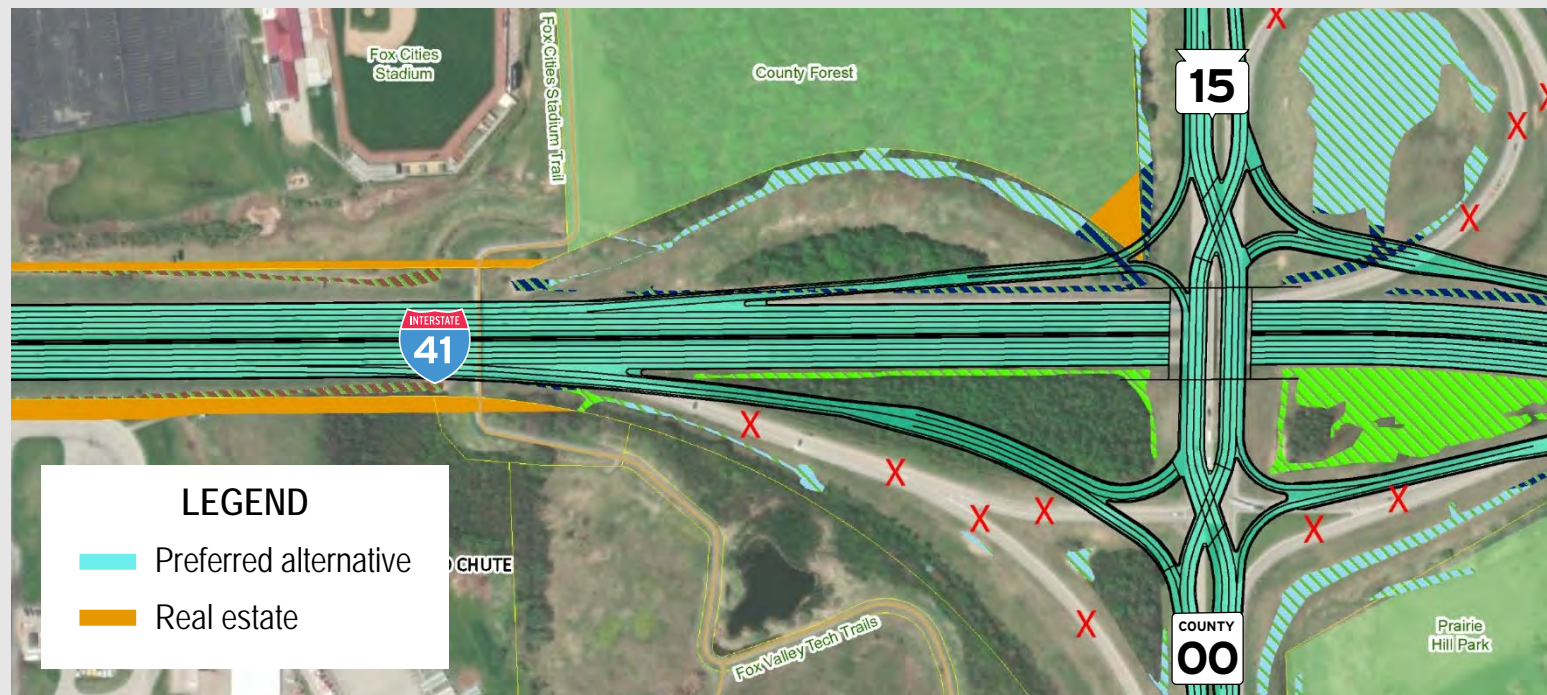
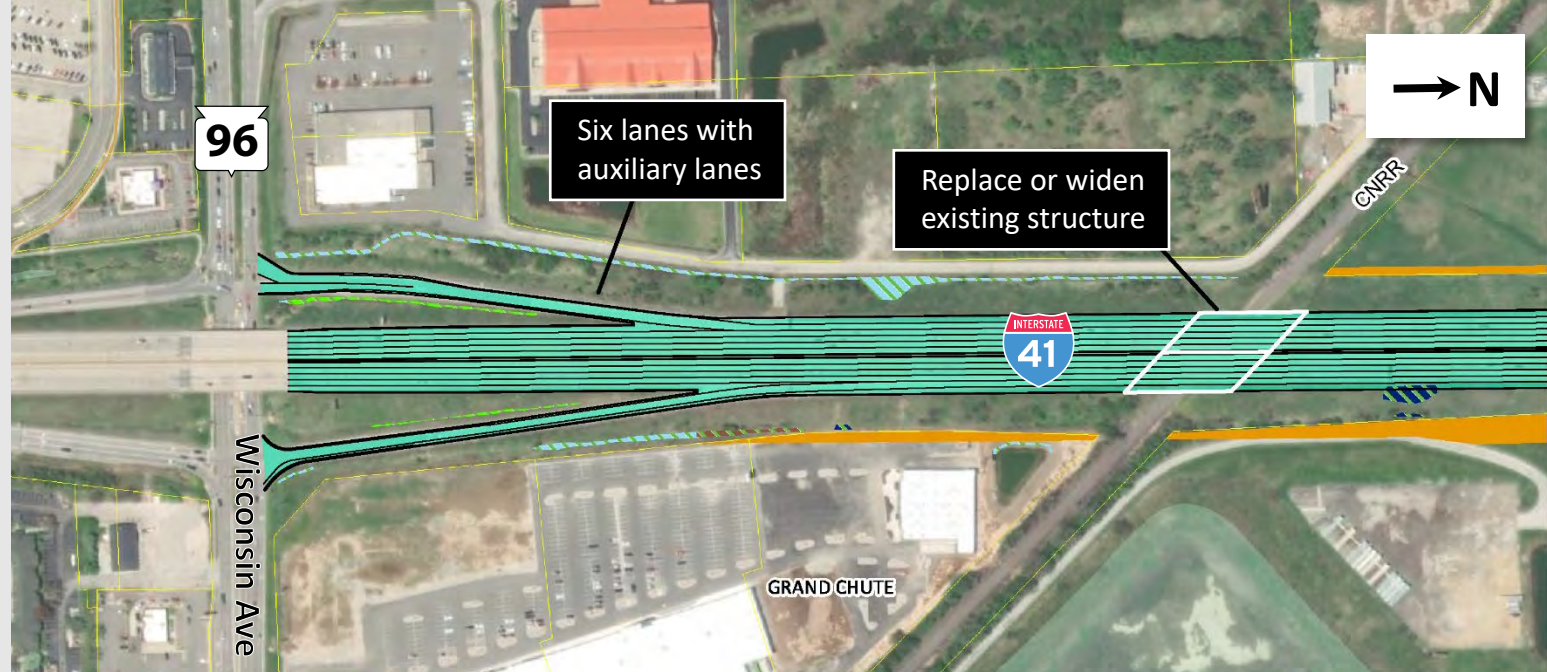
#### BENEFITS:



Less  
cost



Less  
real estate





# WIS 15/County 00

## Northland Avenue

Preferred Alternative:  
Diverging Diamond  
Interchange

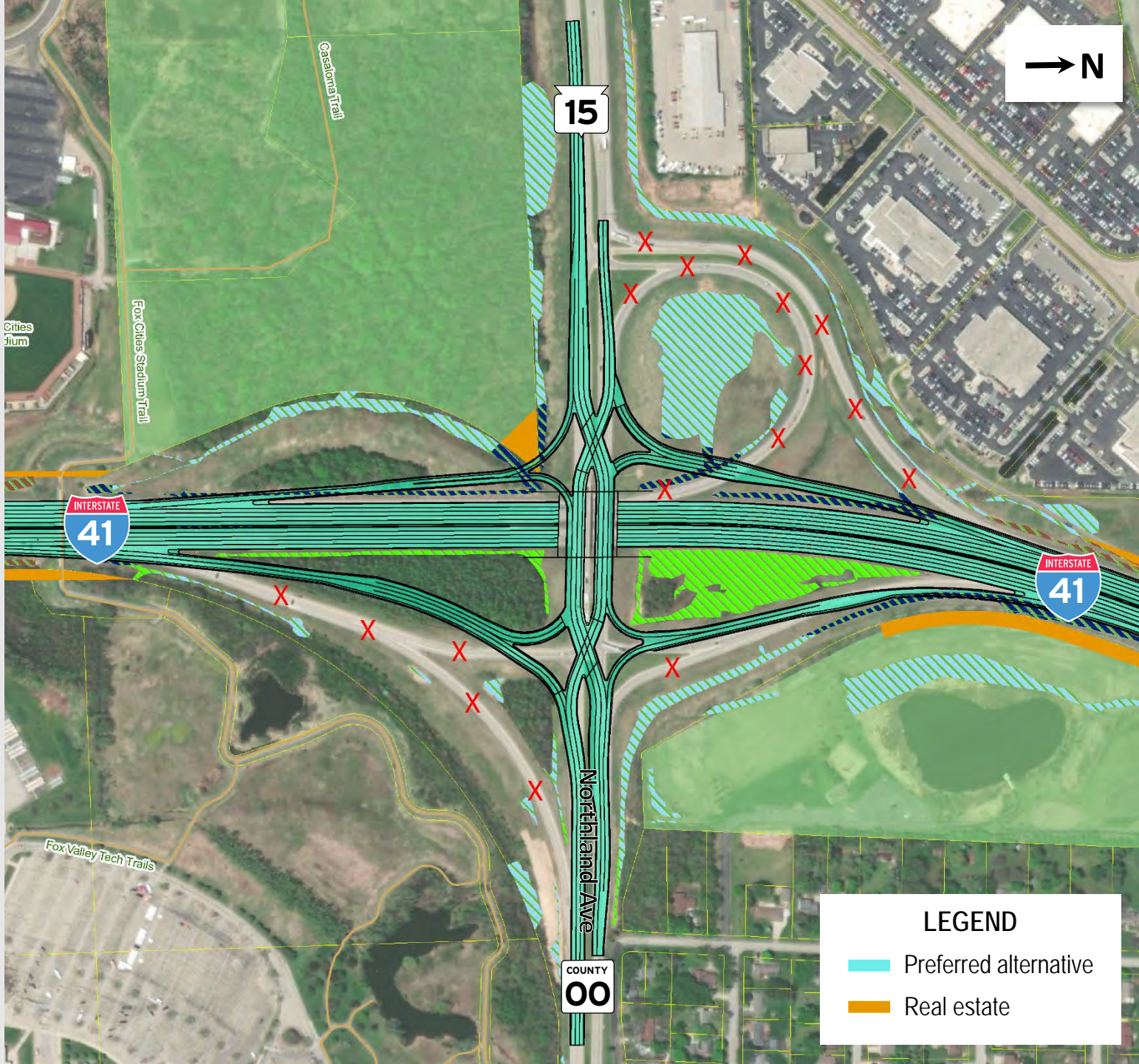
BENEFITS:



Improved traffic operations



Improved safety





# WIS 47

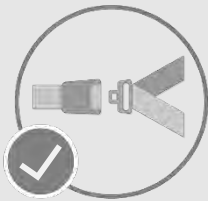
## Richmond Street

### Preferred Alternative: Diverging Diamond Interchange

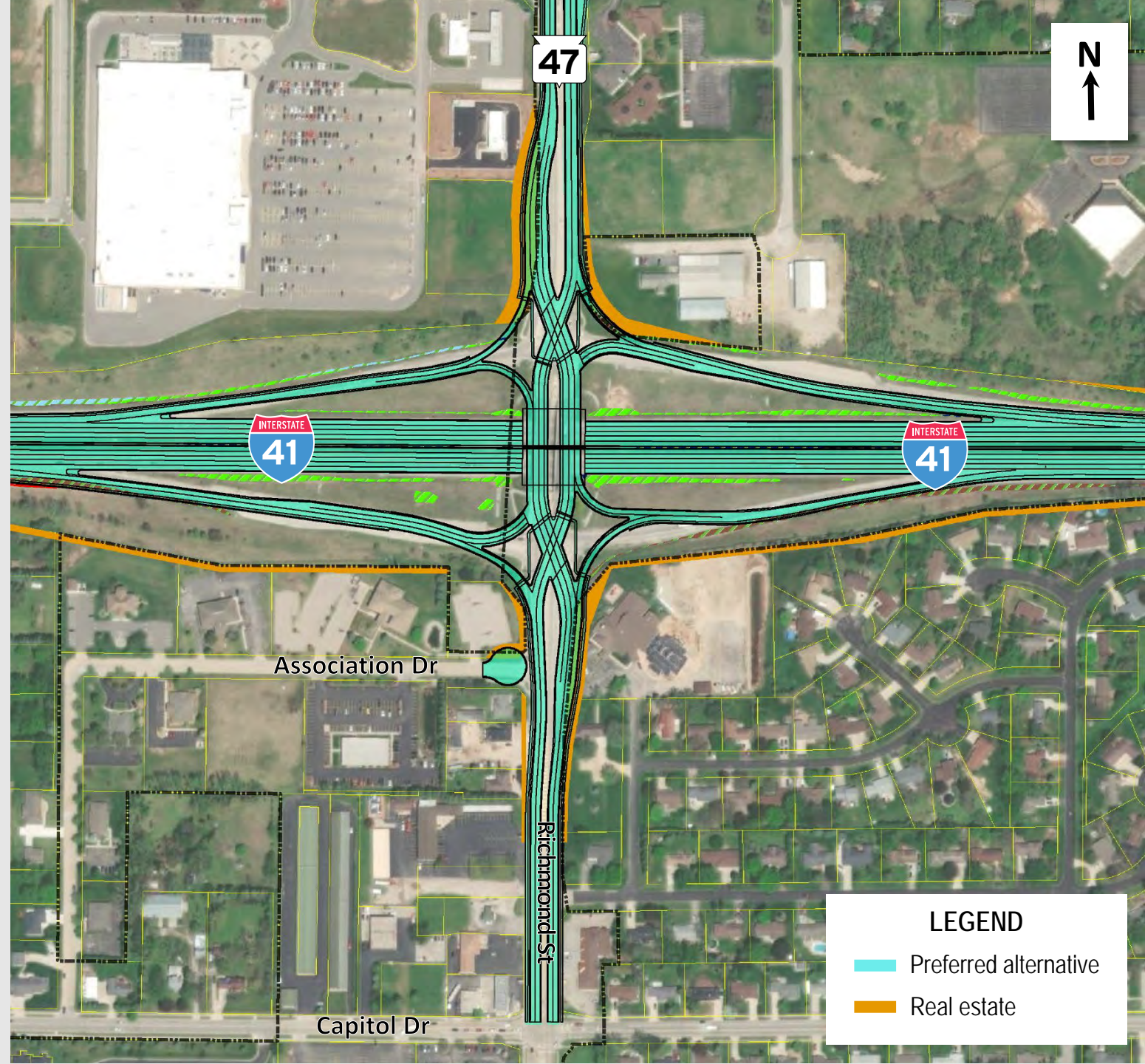
#### BENEFITS:



Improved  
traffic operations



Improved  
safety





# I-41

## WIS 47 – County E

### Preferred Alternative: Auxiliary Lanes

#### BENEFITS:



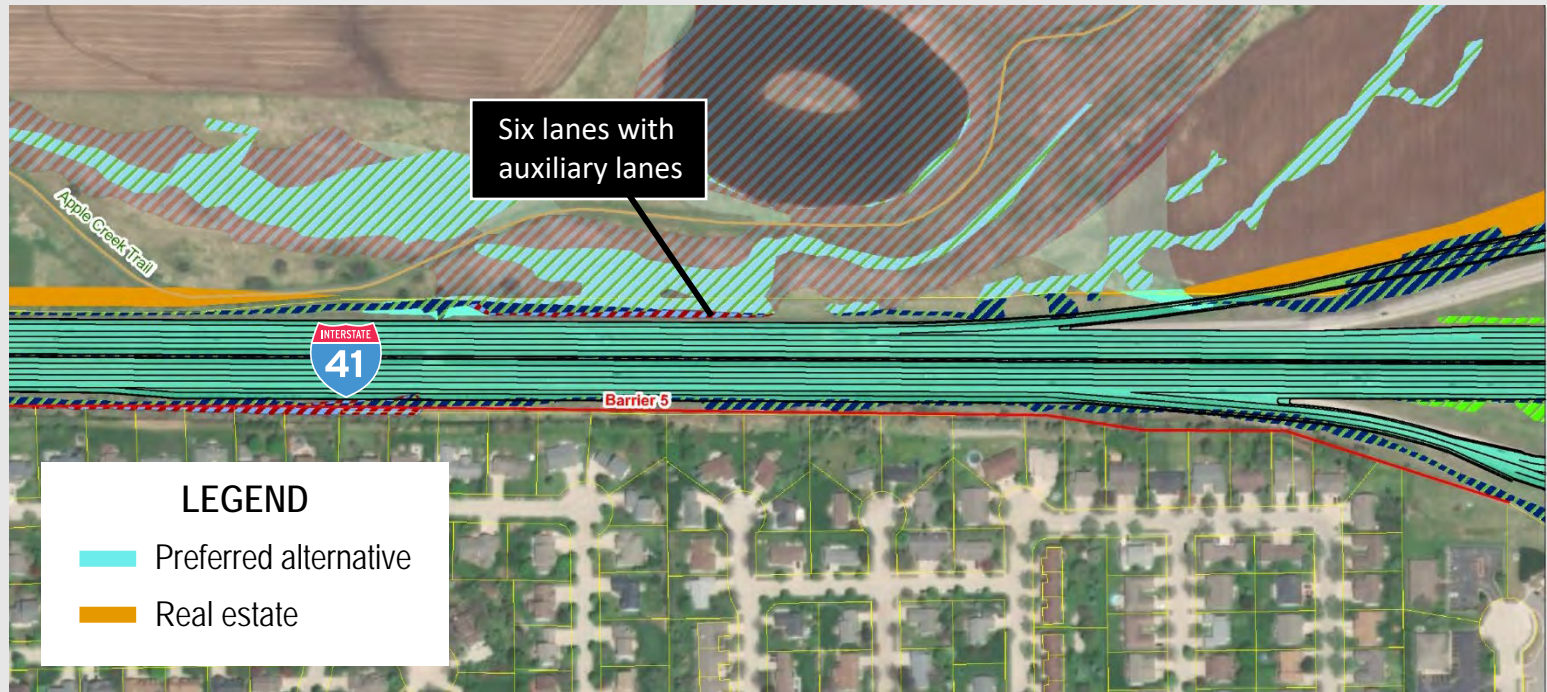
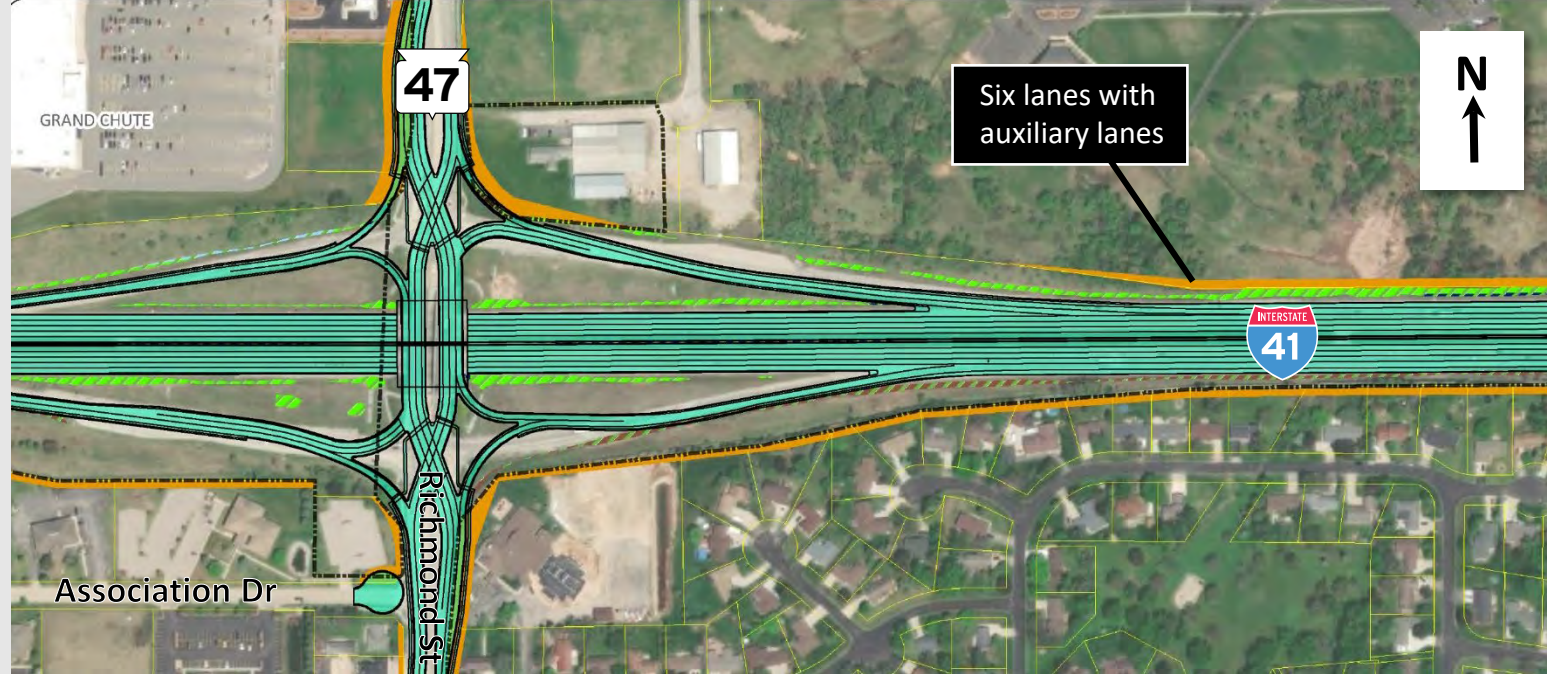
Improved  
safety



Less  
cost



Less  
real estate



#### LEGEND

- Preferred alternative
- Real estate



# County E

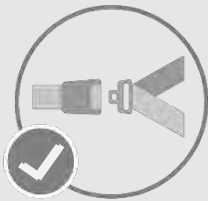
## Ballard Road

### Preferred Alternative: Diverging Diamond Interchange

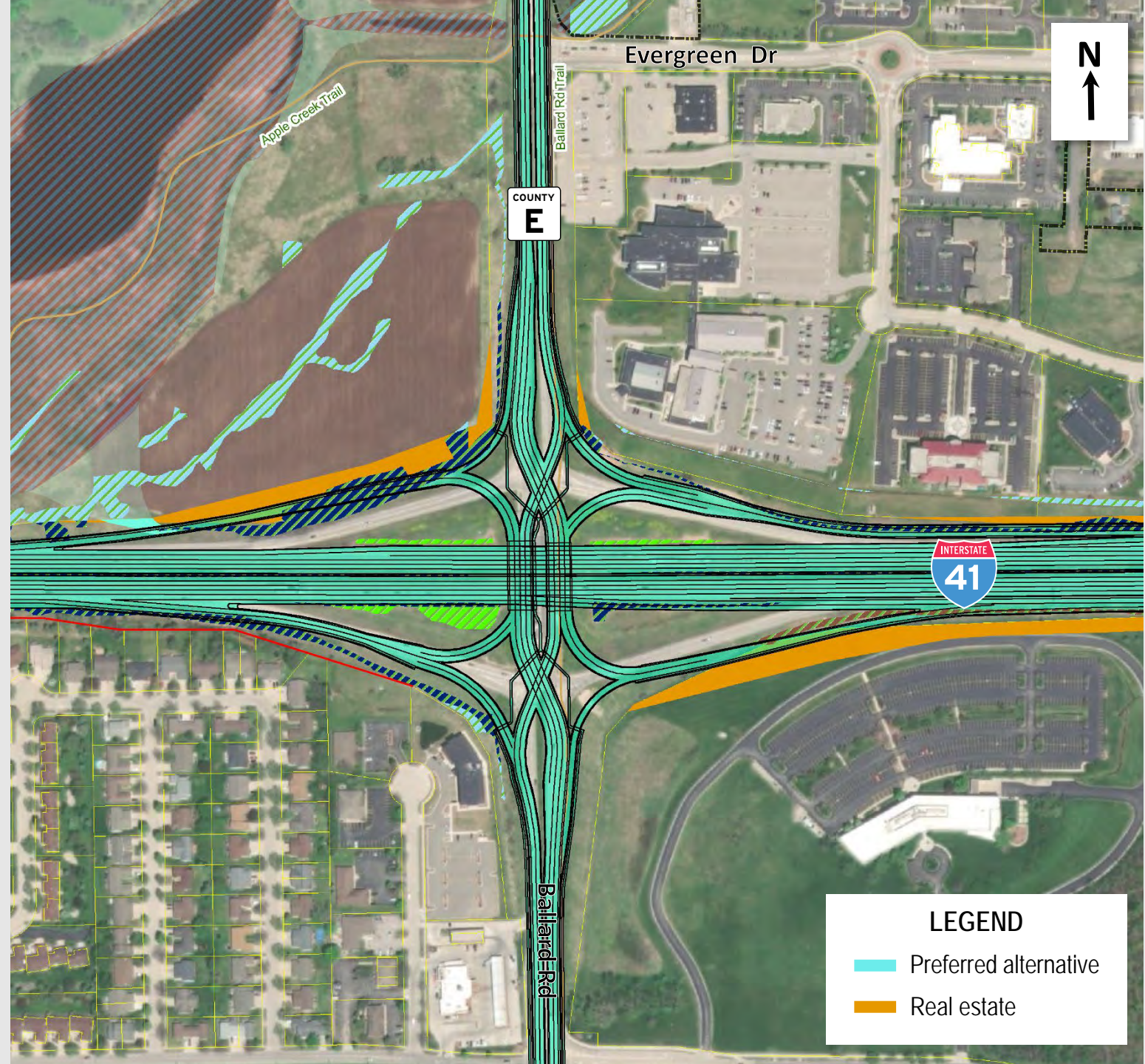
#### BENEFITS:



Improved  
traffic operations



Improved  
safety





# I-41

## County E – WIS 441

### Preferred Alternative: Collector-Distributor Roads

#### BENEFITS:



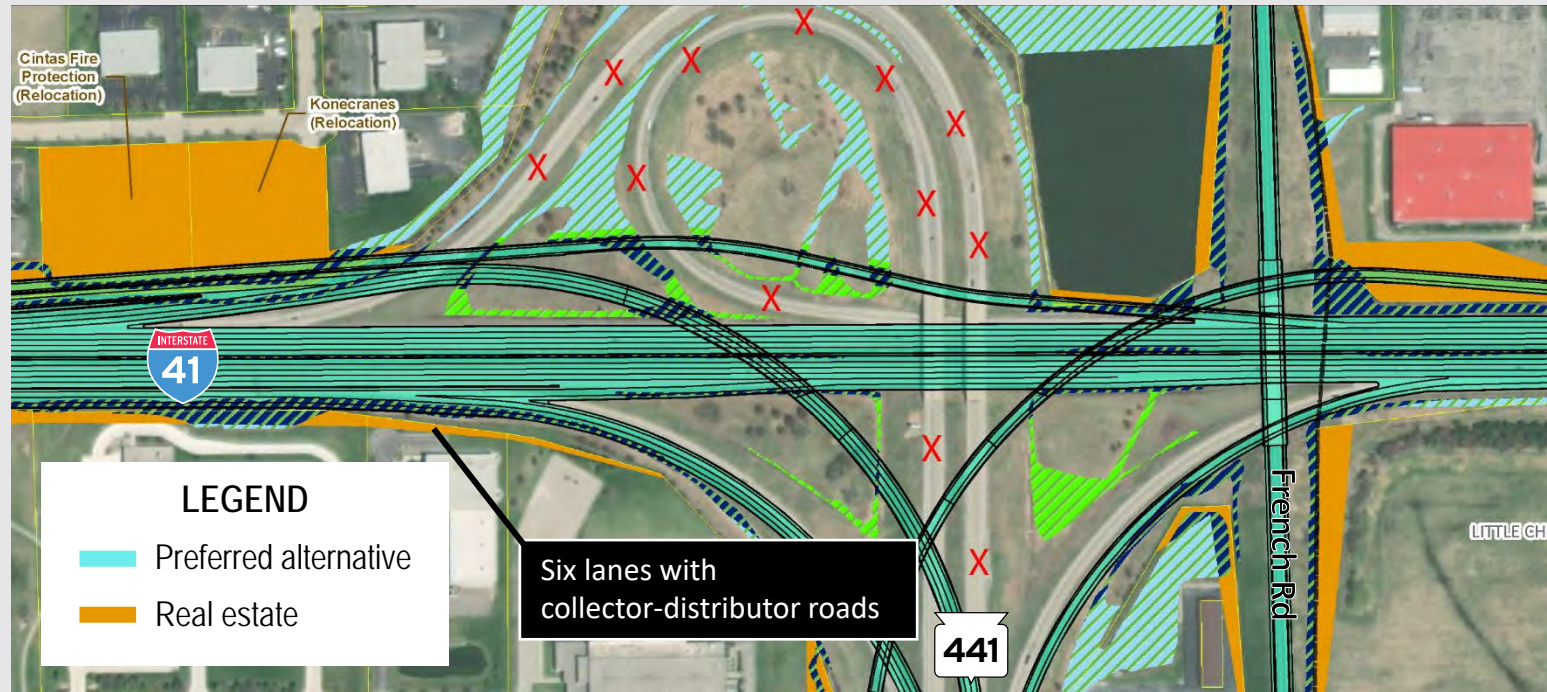
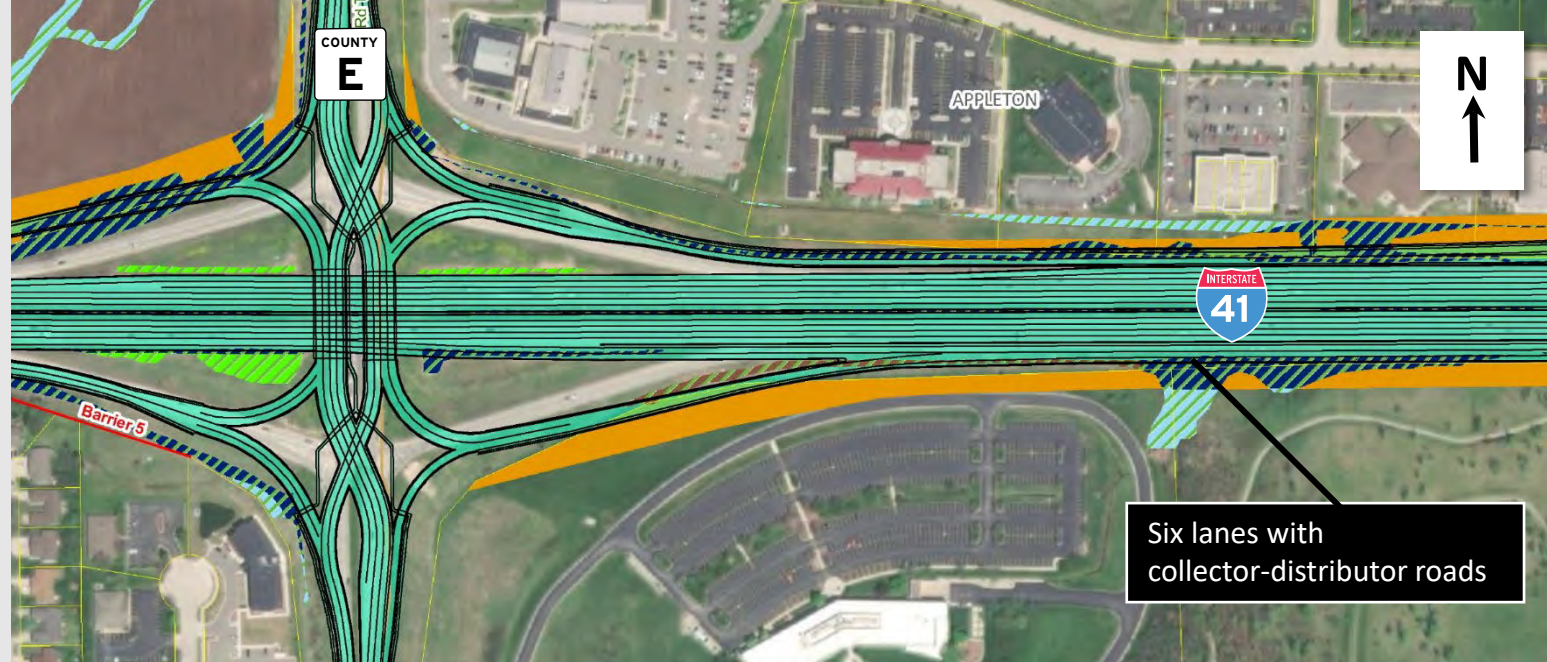
Improved  
safety



Less  
cost



Less  
real estate





# WIS 441

## Preferred Alternative: 55 mph Flyover Ramps

### BENEFITS:



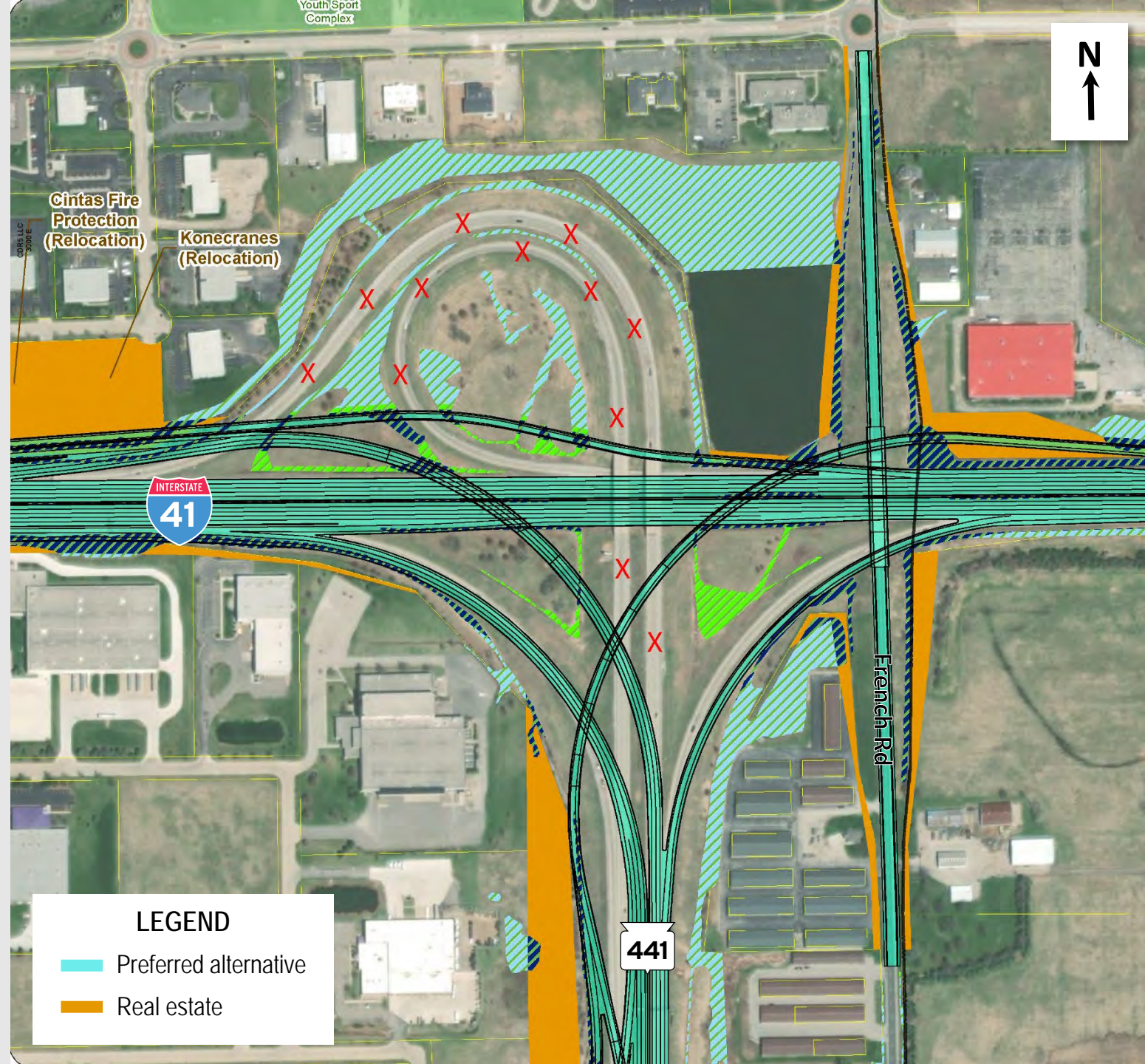
Less  
cost



Less  
impacts



Less  
real estate





# WIS 441

## I-41 – County 00

### Preferred Alternative: Auxiliary Lanes Northbound & Braided Ramps Southbound

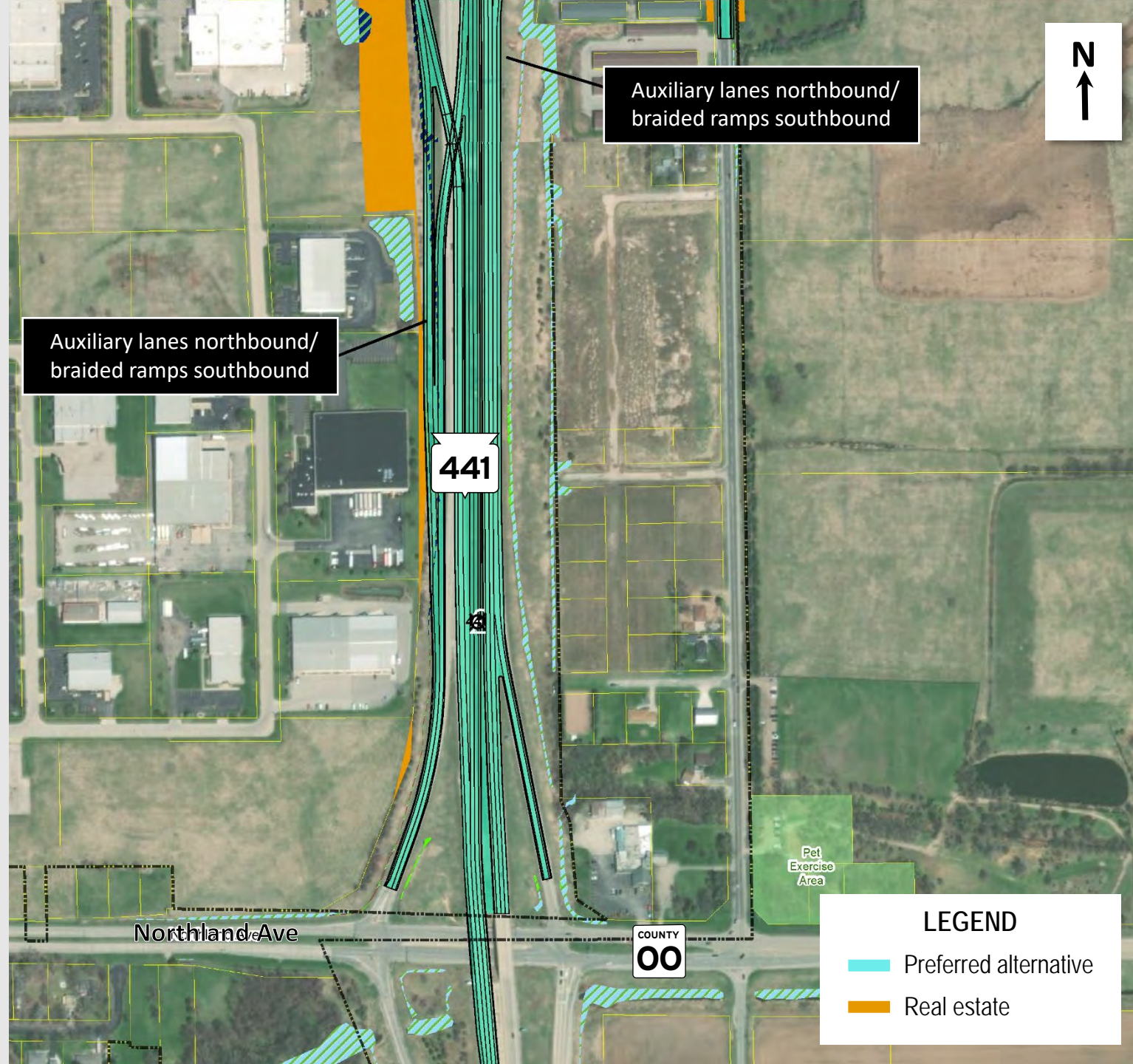
#### BENEFITS:



Less  
cost



Less  
real estate





# County N

## Freedom Road

### Preferred Alternative: Diamond Interchange with Signals

#### BENEFITS:



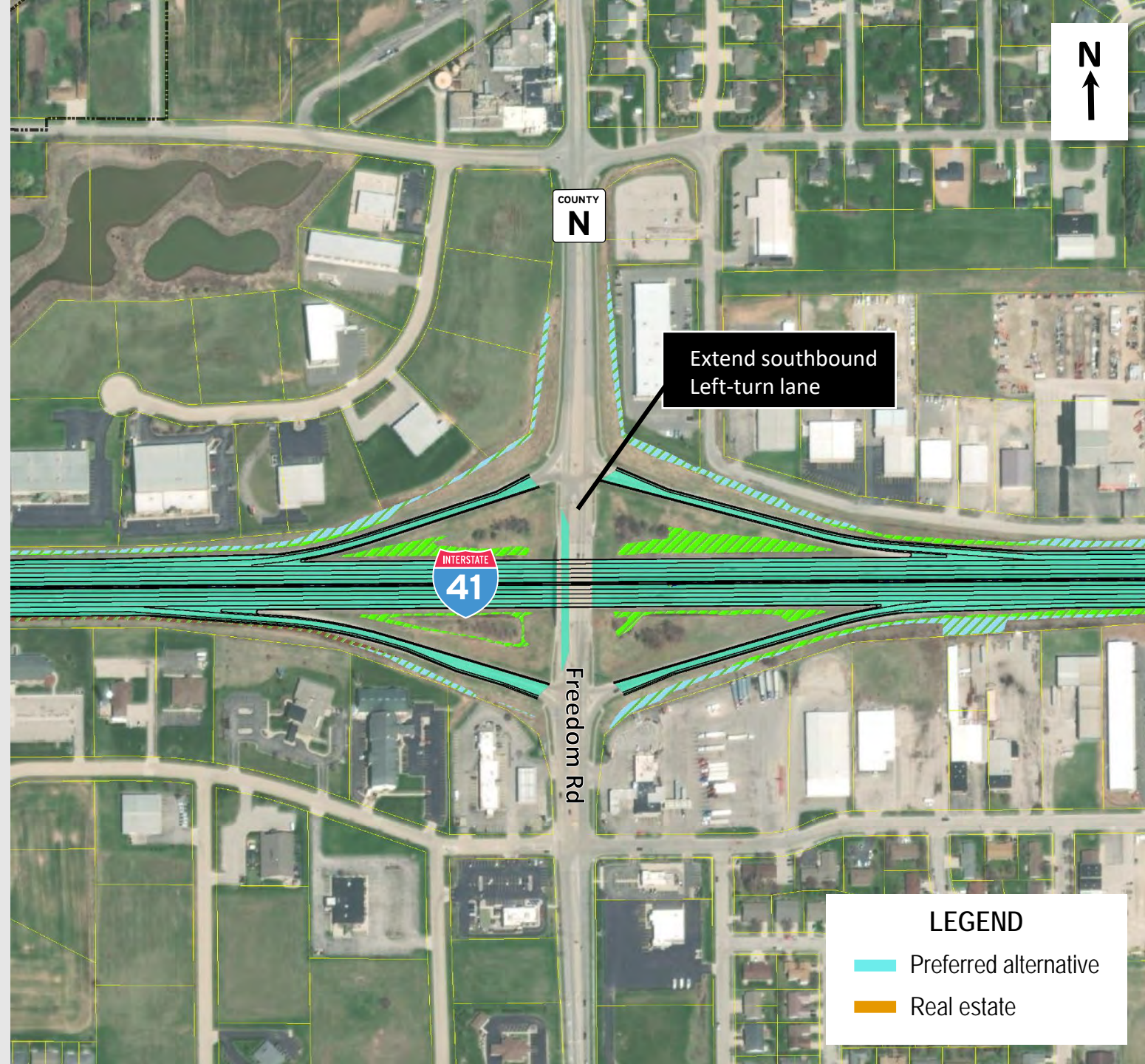
Less  
cost





Less  
impacts



No  
real estate



#### LEGEND

-  Preferred alternative
-  Real estate



# WIS 55

## Delanglade Street

### Preferred Alternative: Diamond Interchange with Roundabouts

#### BENEFITS:



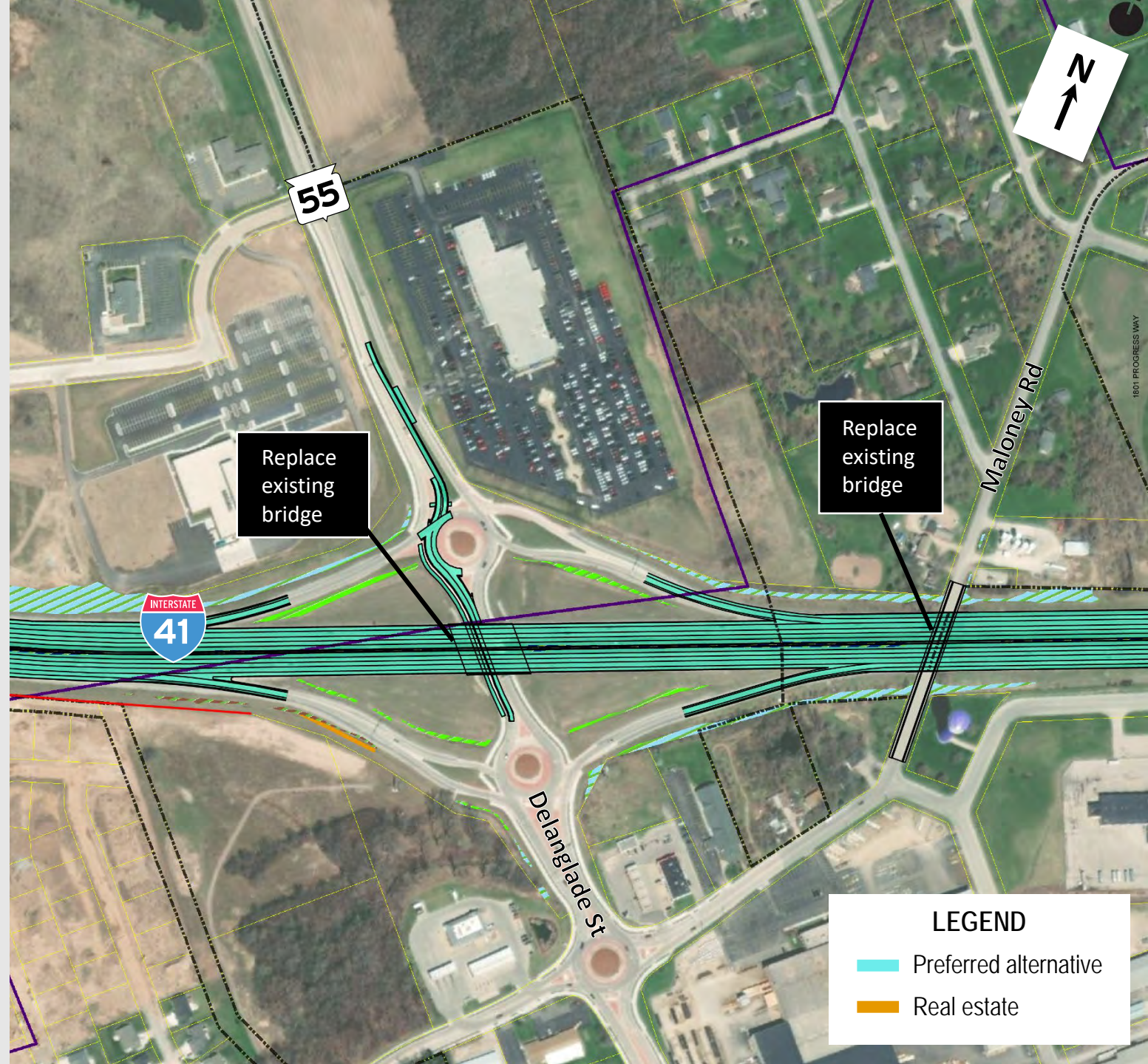
Less  
cost



Less  
impacts



Less  
real estate





# County J

## Lawe Street

### Preferred Alternative: Diamond Interchange with Roundabouts

#### BENEFITS:



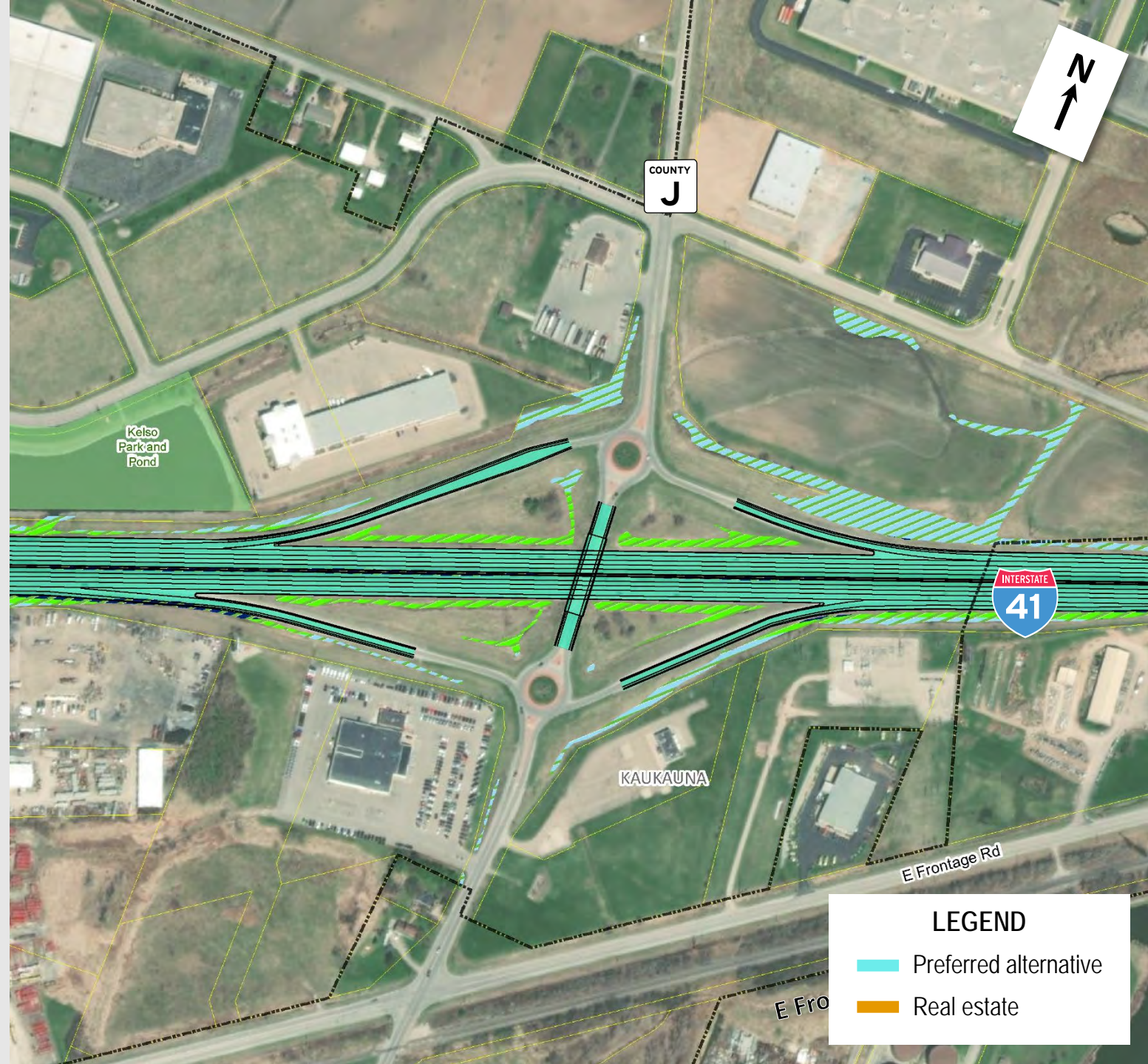
Less  
cost





Less  
impacts



Less  
real estate



#### LEGEND

-  Preferred alternative
-  Real estate



# County U

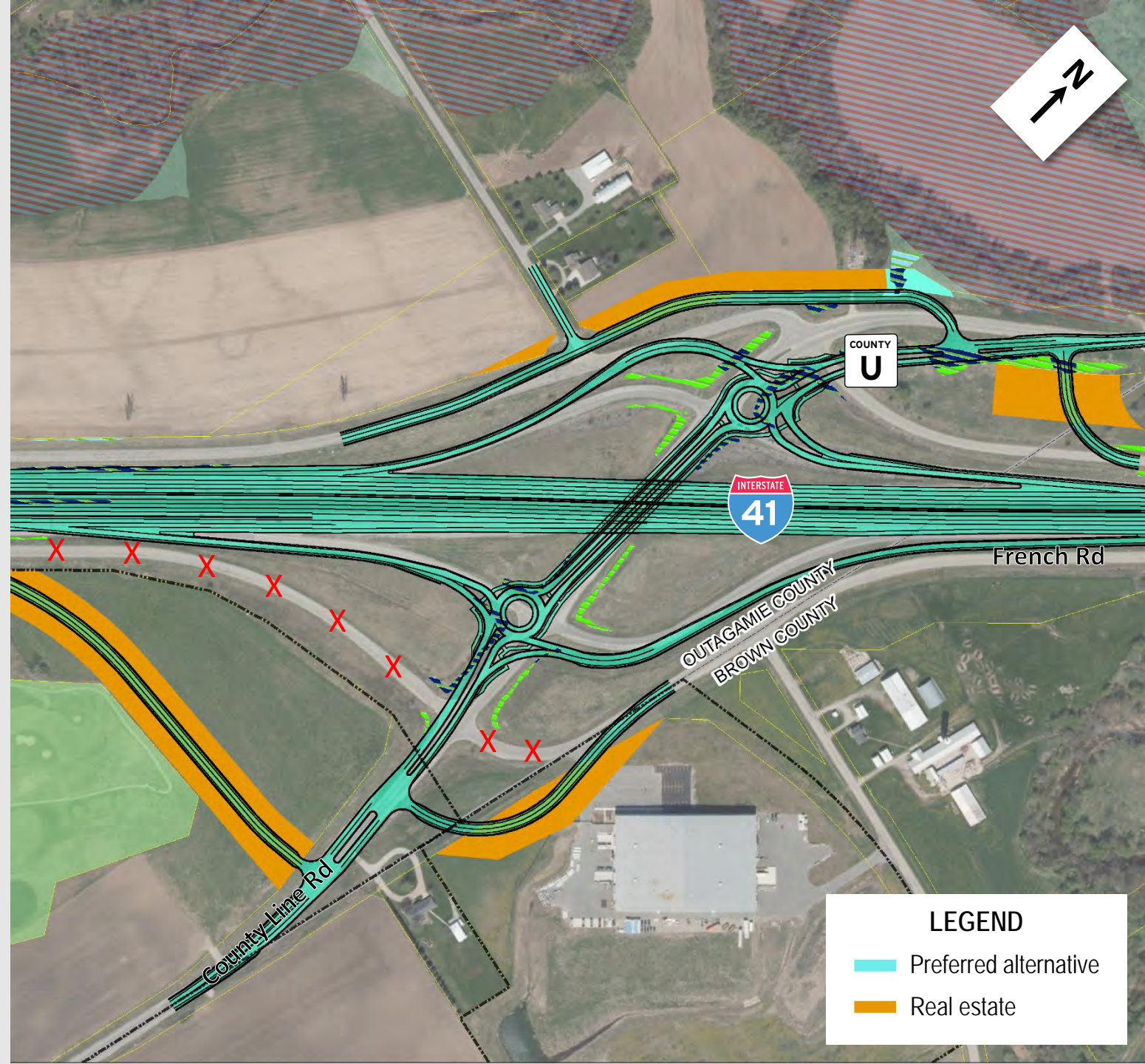
## County Line Road

### Preferred Alternative: Diamond Interchange with Roundabouts

#### BENEFITS:



Improved  
traffic operations





# County S

## Freedom Road

### Preferred Alternative: Diamond Interchange with Roundabouts

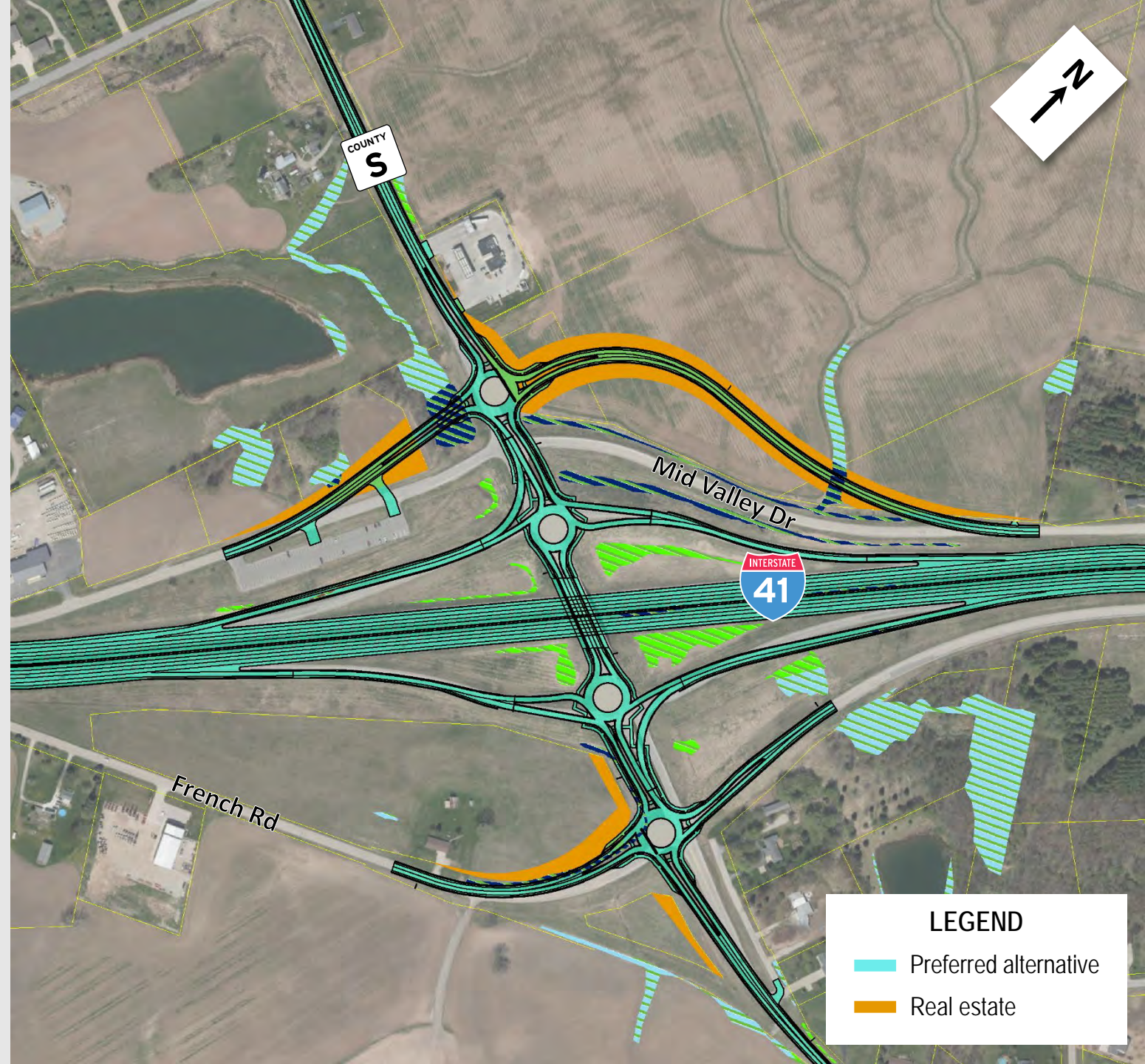
#### BENEFITS:



Improved  
traffic operations



Less  
impacts





# South Bridge Connector

## Preferred Alternative: Diamond Interchange with Roundabouts

### BENEFITS:



Less  
cost





Less  
impacts



Less  
real estate



### LEGEND

-  Preferred alternative
-  Real estate



# South Bridge Connector

## Preferred Alternative: Diamond Interchange with Roundabouts

### BENEFITS:



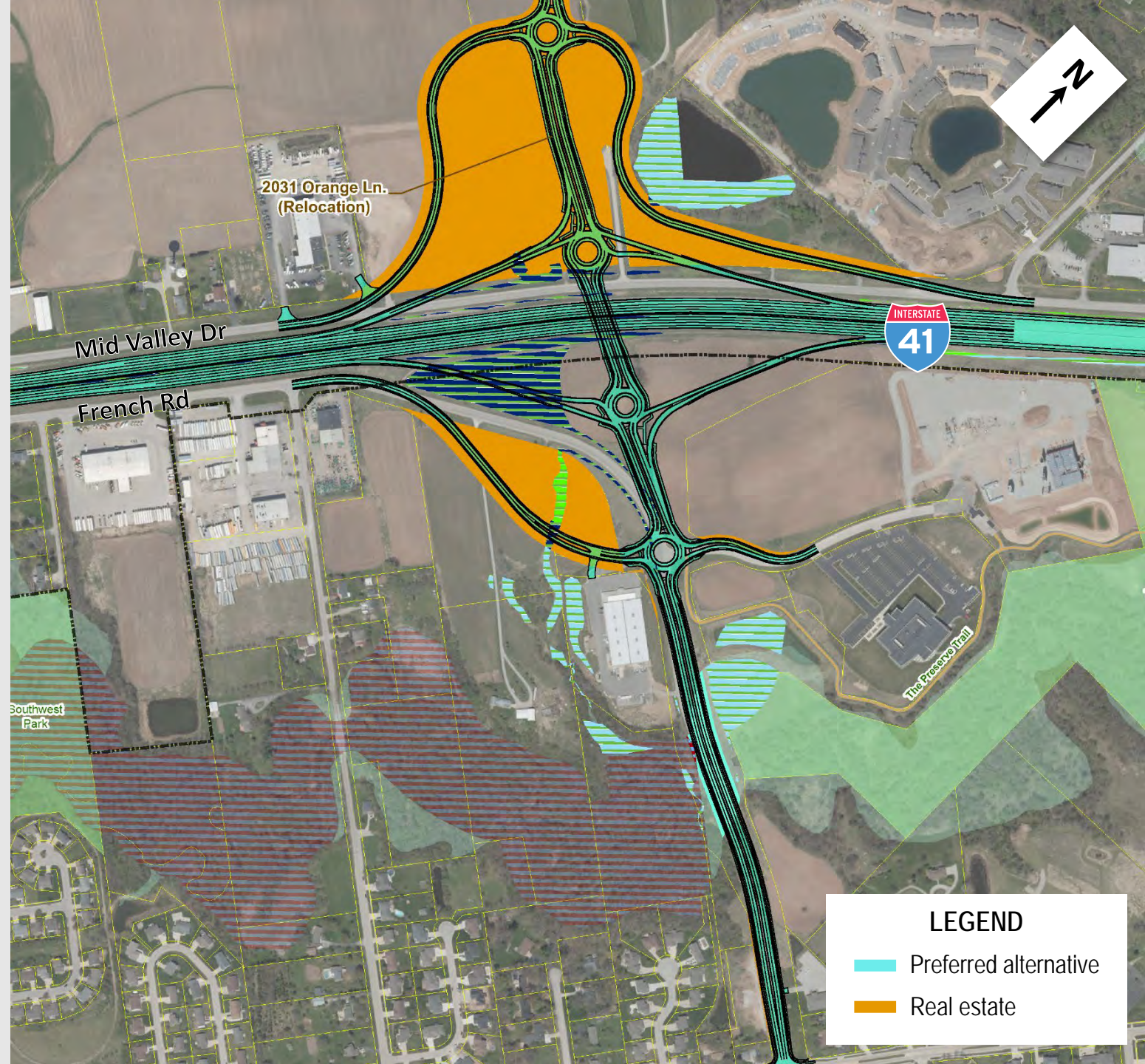
Less  
cost





Less  
impacts



Less  
real estate



### LEGEND

-  Preferred alternative
-  Real estate



# I-41

## South Bridge – County F (Scheuring Road)

### Preferred Alternative: Auxiliary Lanes

#### BENEFITS:



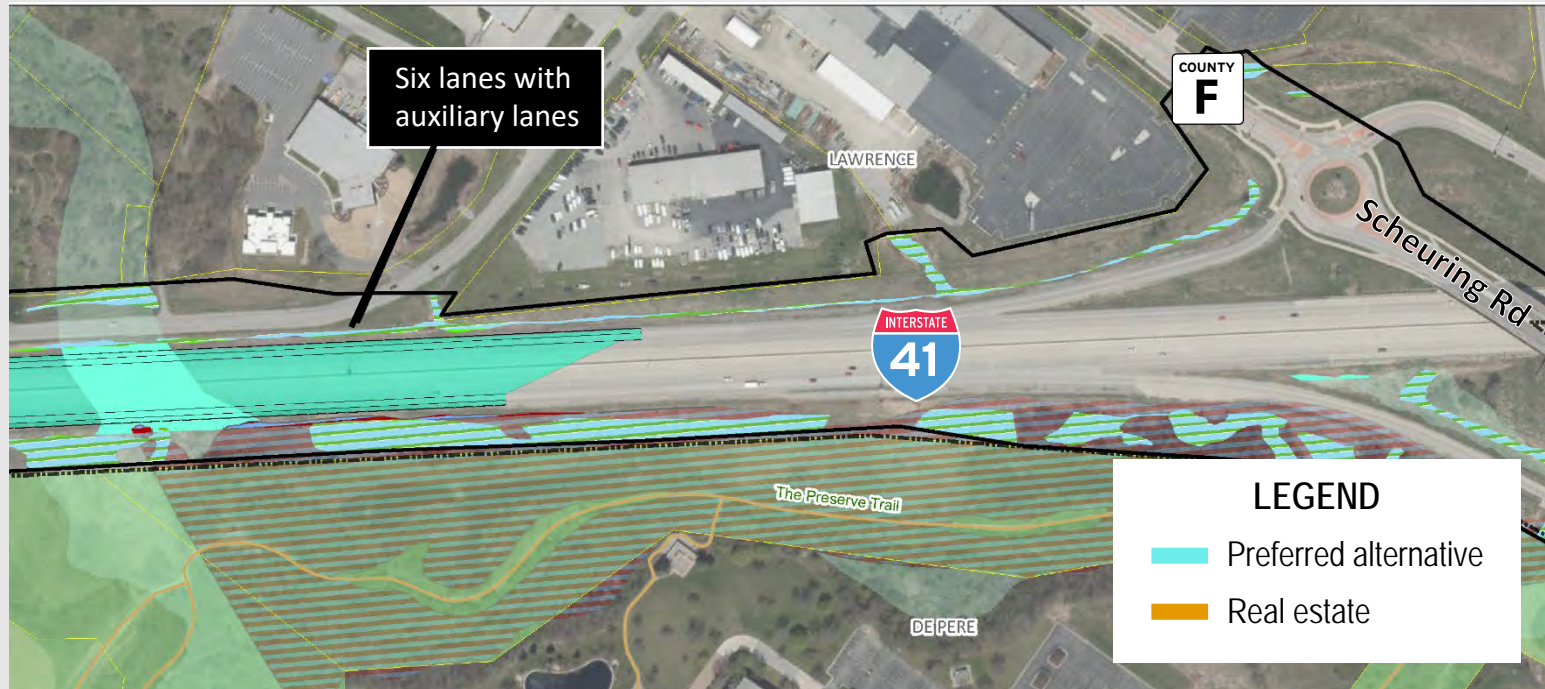
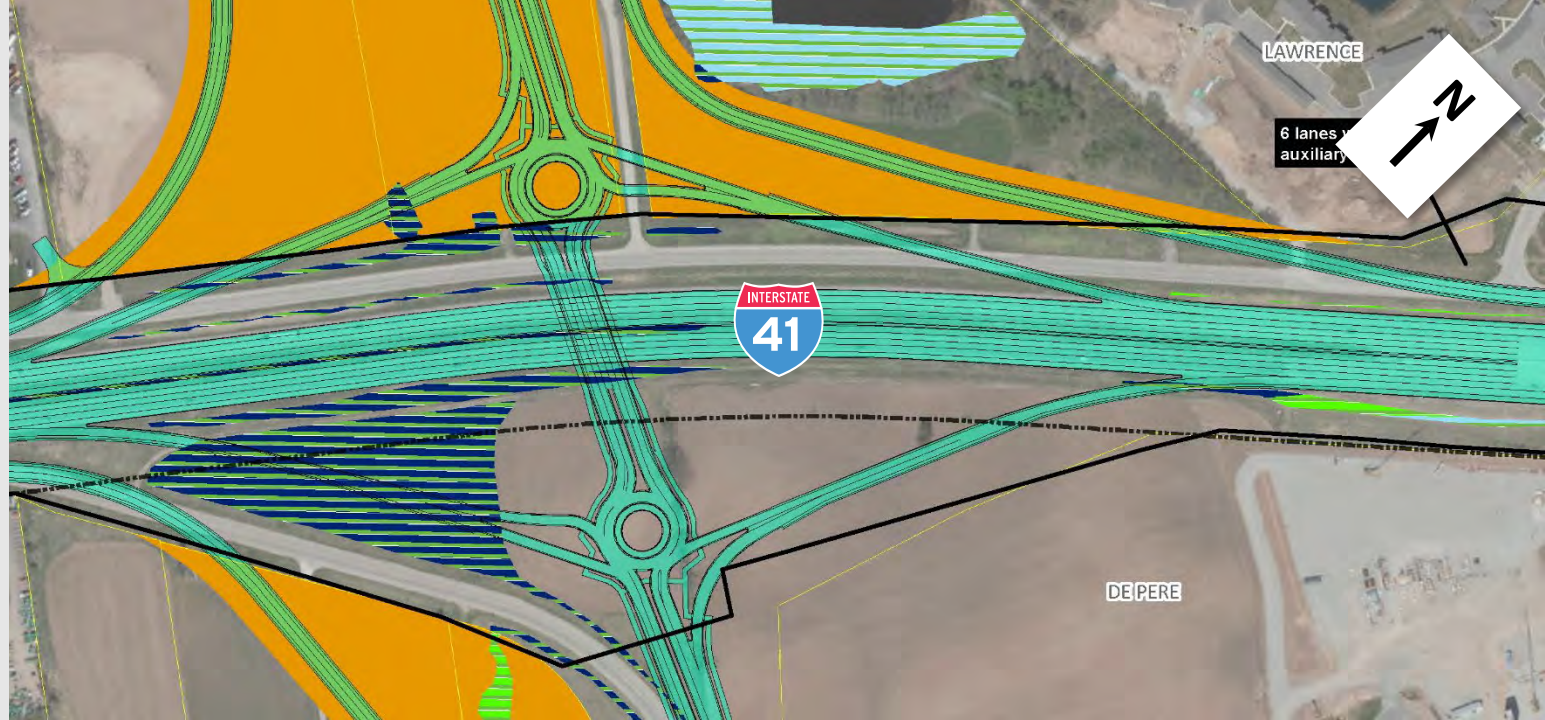
Less  
cost



Less  
impacts



Less  
real estate





# Safety and Weight Enforcement Facility

## Preferred Alternative: Northbound Alternative

### BENEFITS:



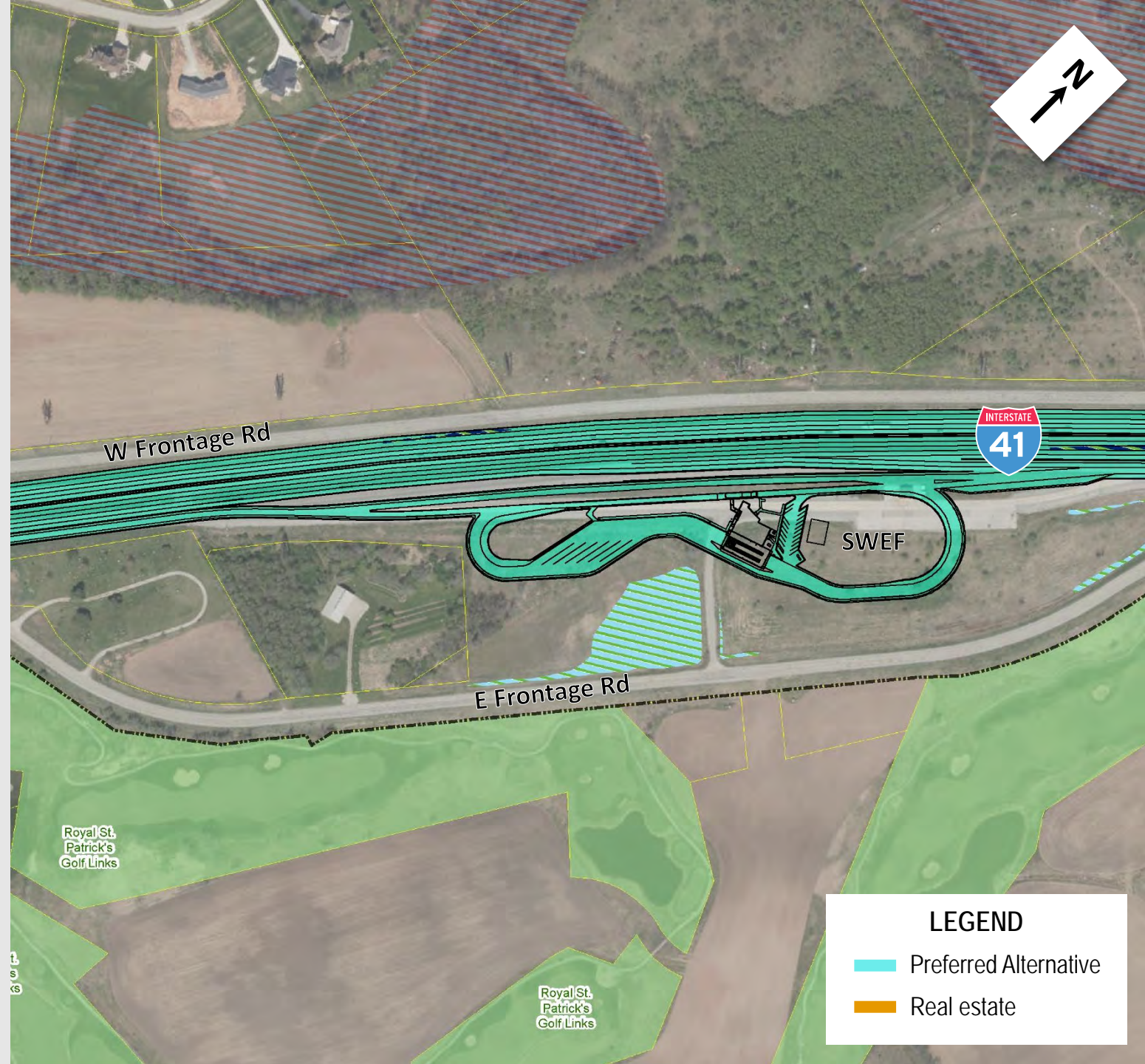
Less  
cost



Less  
impacts

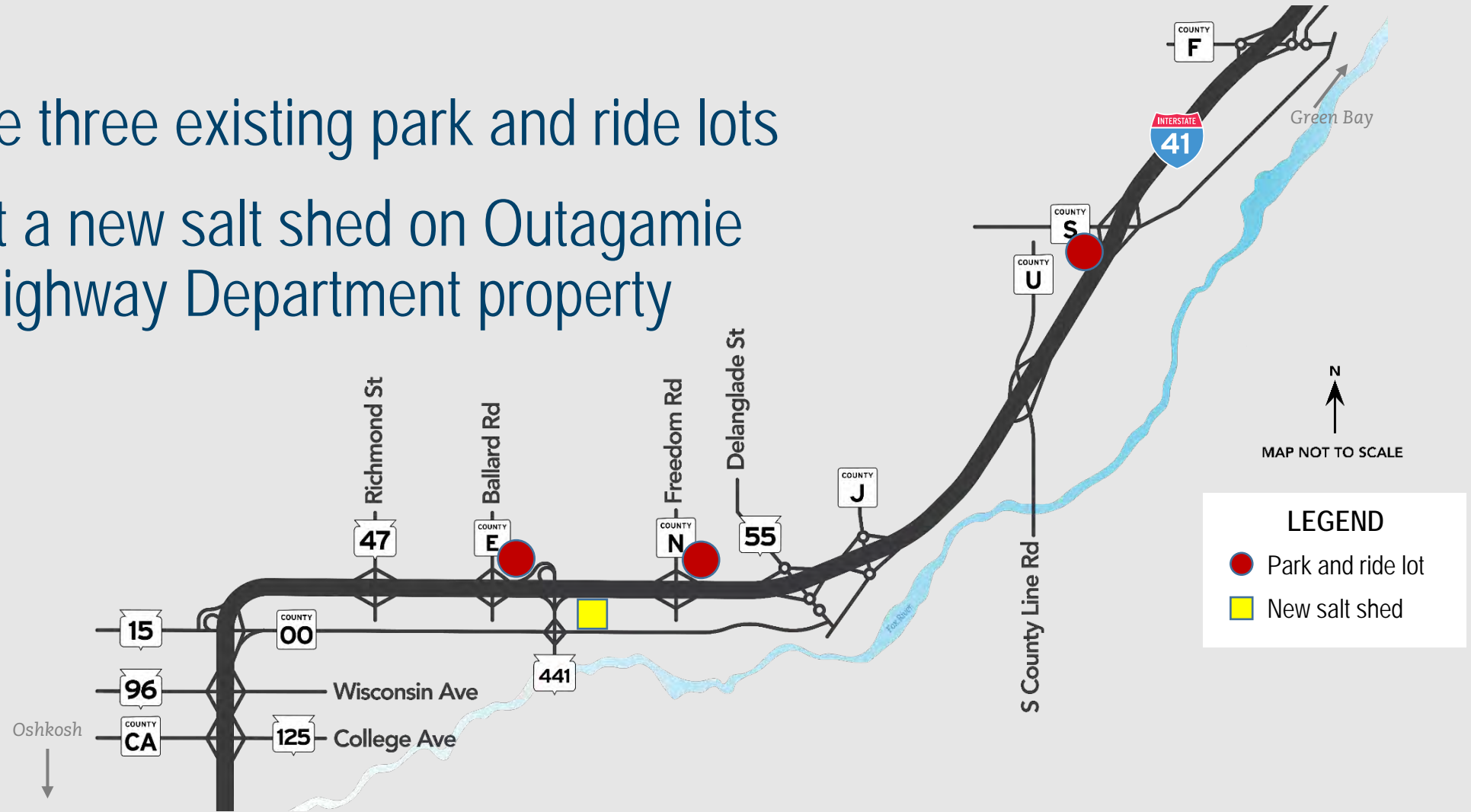


No  
real estate



# Additional Improvements

- Resurface three existing park and ride lots
- Construct a new salt shed on Outagamie County Highway Department property





# Project Schedule

Task Item	2020												2021											
	J	F	M	A	M	J	J	A	S	O	N	D	J	F	M	A	M	J	J	A	S	O	N	D
Environmental																								
Agency Coordination																								
Traffic Analysis																								
Alternatives Development/Screening																								
Preliminary Design																								
Public Involvement																								

MEETING•

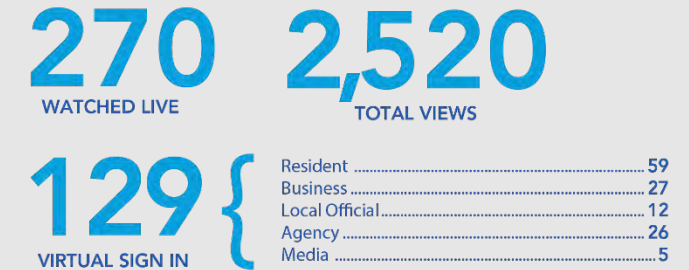
MEETING•

HEARING•

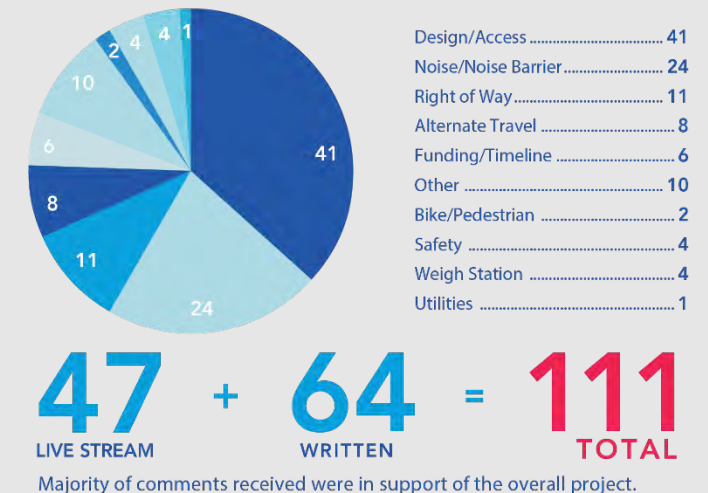
# Key Milestones

- Approved Project Initiation Letter (PIL)-  
January 2020
- Virtual Local Official Meetings
  - May 6, 2020
  - September 9, 2020
  - July 13, 2021
- Virtual Public Involvement Meetings
  - May 13, 2020
  - September 23, 2020

## VIRTUAL PUBLIC INVOLVEMENT MEETINGS ATTENDANCE



## COMMENTS AND QUESTIONS SUMMARY



# Key Milestones – Next Steps

- Environmental Assessment
  - Public hearing: July 27, 28 and 29, 2021
  - Public comment period ends: August 6, 2021
  - Final environmental approval: anticipated November 2021
- Final engineering: tentative 2022-2024
- Right of way acquisition: tentative 2023-2024
- Construction: TBD



# Coordination



# WisDOT Will Keep You Informed



Project website: [wisconsindot.gov/I41project](http://wisconsindot.gov/I41project)