



I-41 Project (Appleton to De Pere)

Public Involvement Meeting

August 17 and 18, 2022

Presentation Outline

- 1 Project team
- 2 Project status
- 3 Project improvements
- 4 Project schedule
- 5 Next steps
- 6 Keeping you informed



Project Team



TOM BUCHHOLZ
Northeast Region Director



CHAD DeGRAVE
Project Development Manager



KURT PETERS
Corridor Project Supervisor



SCOTT EBEL
Corridor Project Manager



KYLE TREML
Project Manager



BRYAN LEARST
Project Manager



TIM VERHAGEN
Project Manager



MELISSA (MISSY) KOK
Communications Manager



Project Status






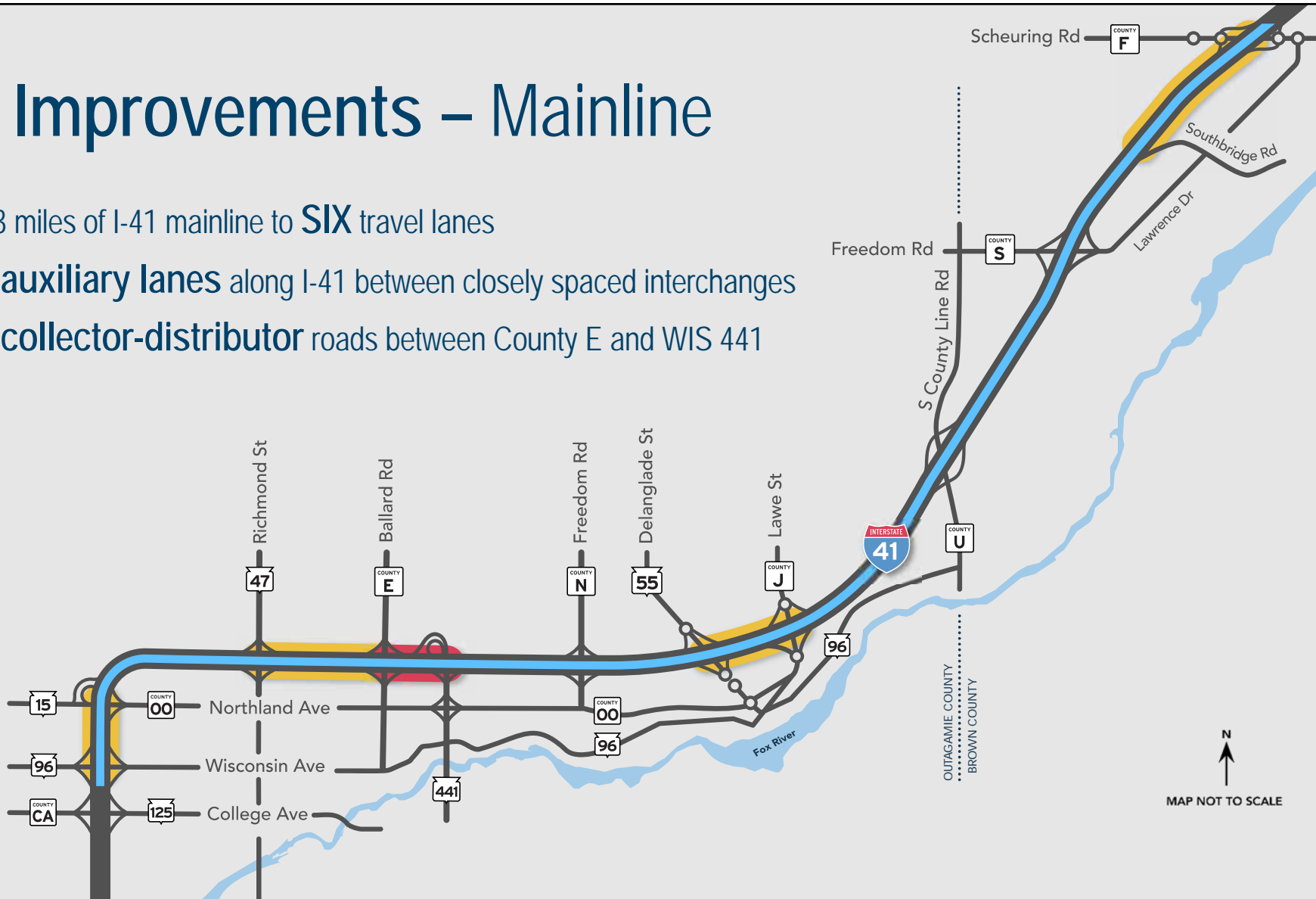
- Major milestones:

- Finding of No Significant Impact (FONSI) signed November 18, 2021
- 60% design expected to be complete: February 2023
- Right of way plat expected to be complete: spring 2023
- Anticipated construction start: 2024



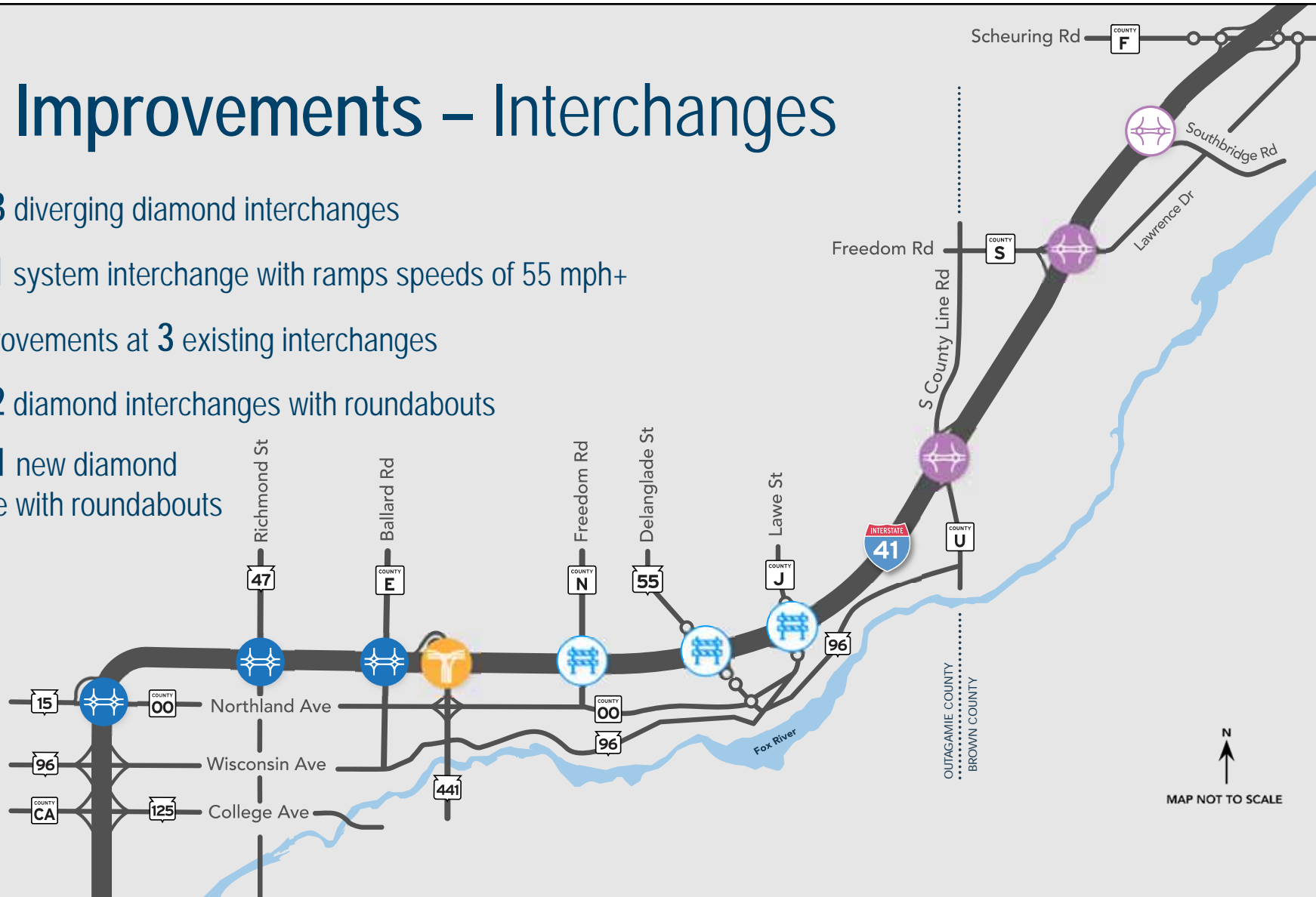
Project Improvements – Mainline

-  Expand 23 miles of I-41 mainline to **SIX** travel lanes
-  Construct **auxiliary lanes** along I-41 between closely spaced interchanges
-  Construct **collector-distributor** roads between County E and WIS 441



Project Improvements – Interchanges

-  Construct **3** diverging diamond interchanges
-  Construct **1** system interchange with ramps speeds of 55 mph+
-  Select improvements at **3** existing interchanges
-  Construct **2** diamond interchanges with roundabouts
-  Construct **1** new diamond interchange with roundabouts






Project Improvements – Overpasses

● Replace 6 local and county road overpasses

- Capitol Drive
- French Road
- Holland Road
- Vandenbroek Road
- Buchanan Street
- Rose Hill Road



Project Improvements

-  Resurface **3** park-and-ride lots
-  Construct **1** new salt shed
-  Construct **1** combined Safety and Weight Enforcement Facility (SWEF) and Northeast Region State Patrol Headquarters



WIS 15/County 00

Northland Avenue

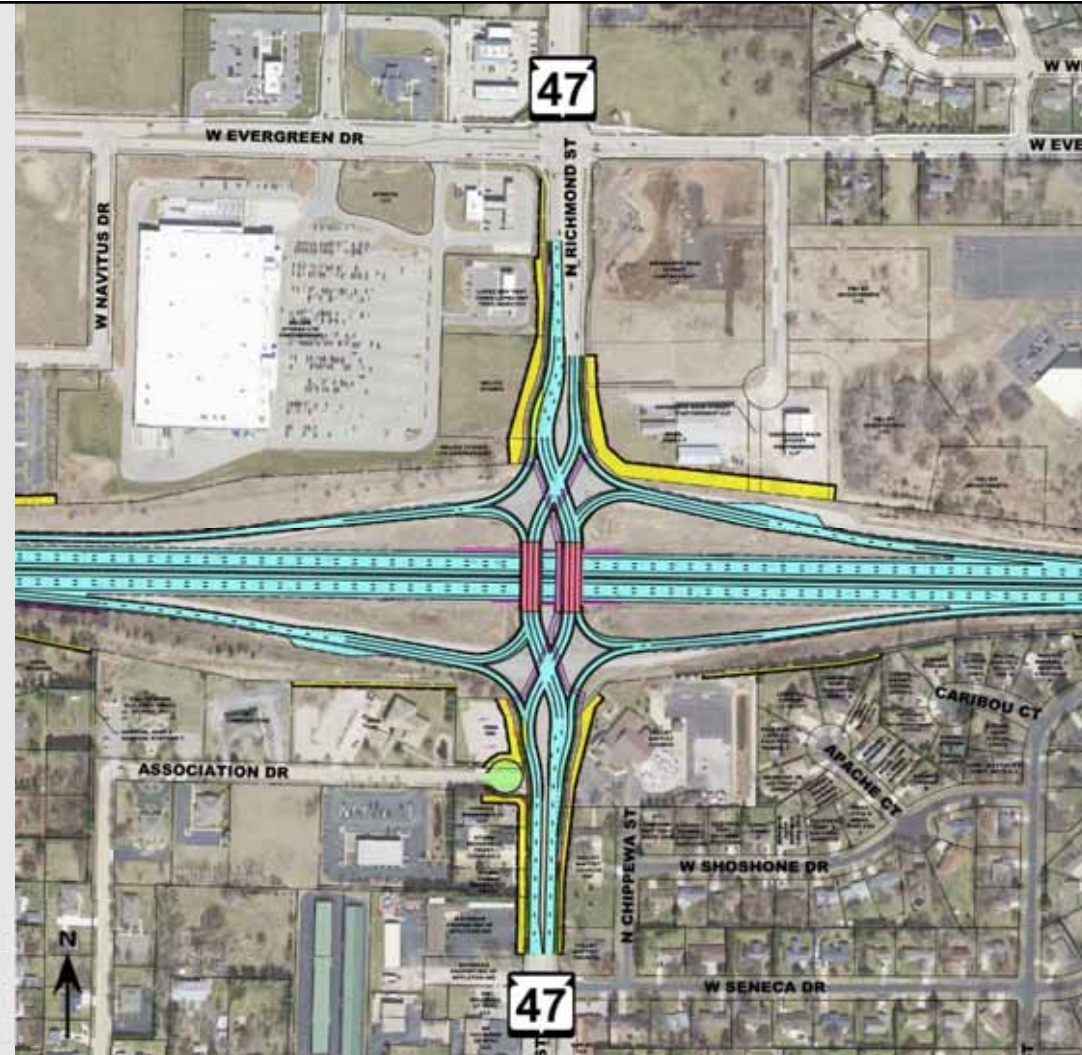
- Reconstruct as a diverging diamond interchange
- Increase merge distance for I-41 northbound entrance ramp at WIS 15/County 00 interchange



WIS 47

Richmond Street

- Reconstruct as a diverging diamond interchange
- Remove access to WIS 47 from Association Drive and construct a cul-de-sac to improve safety and operations at the interchange



County E Ballard Road

- Reconstruct as a diverging diamond interchange
- Add collector-distributor roadways between County E and WIS 441



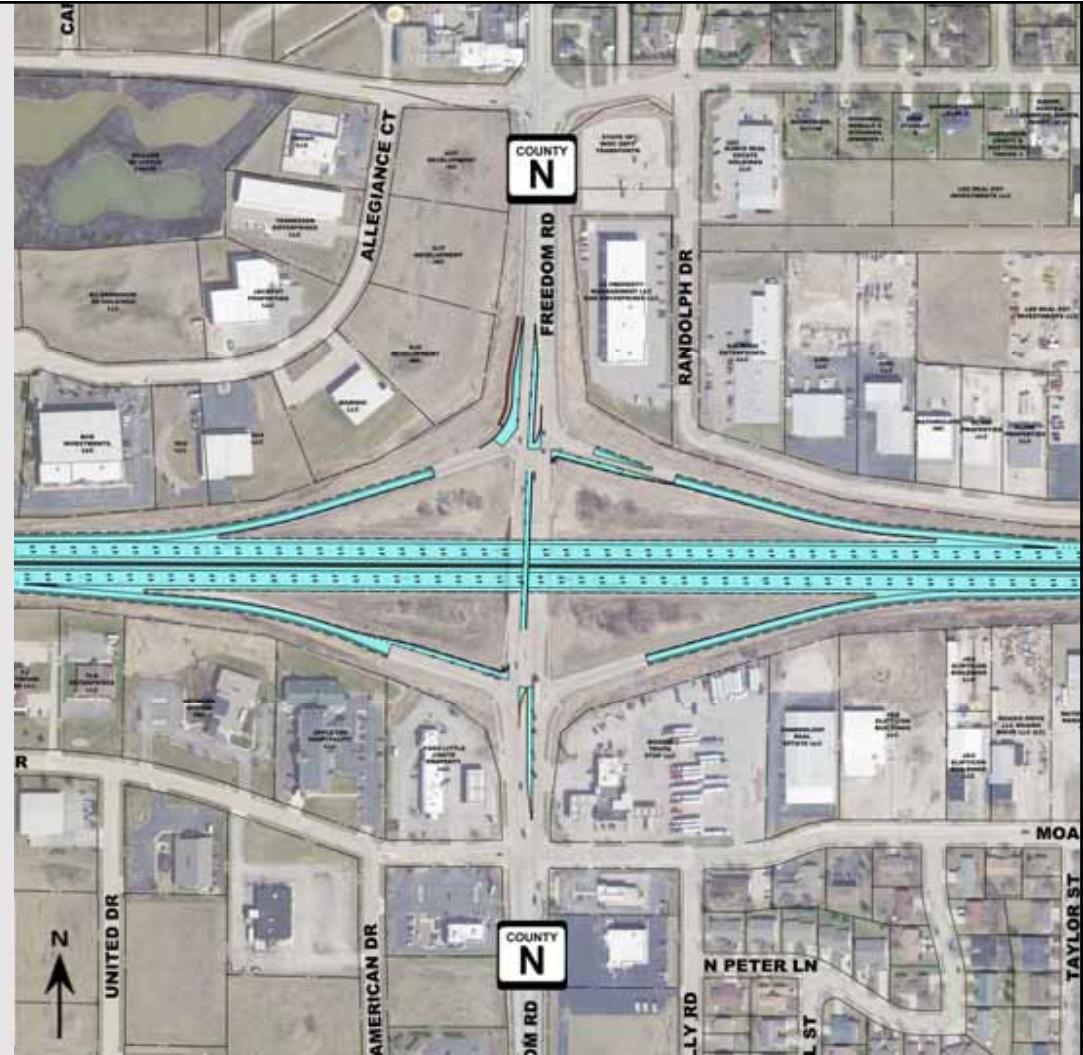
WIS 441 Interchange

- Reconstruct as a three-level system interchange with ramps designed to safely carry vehicles traveling 55 miles per hour
- Reconfigure French Road under I-41 southbound to WIS 441 southbound ramp



County N Freedom Road

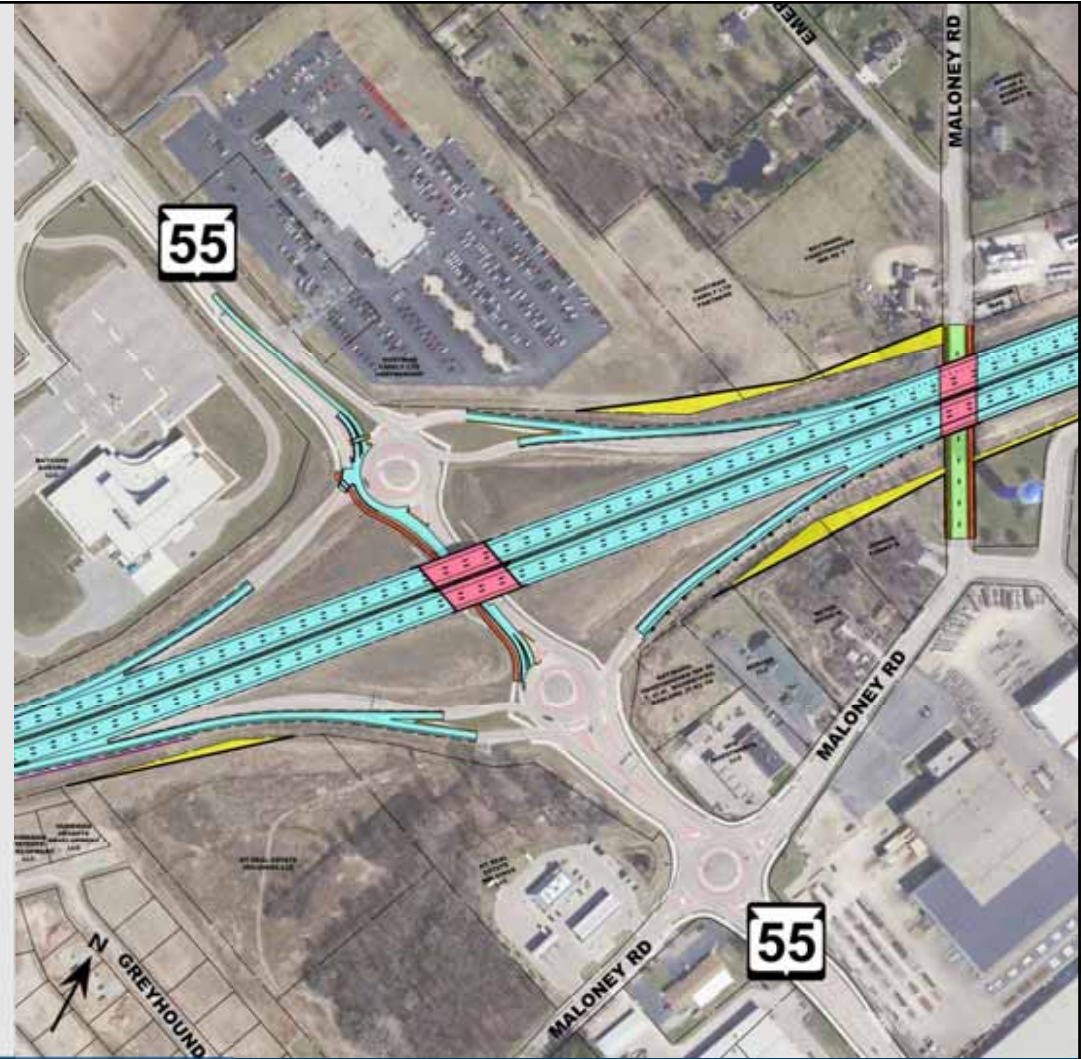
- Remains a diamond interchange with traffic signals
- Reconstruct the interchange ramps. Add dual left turn lanes to both exit ramps approaching County N
- Extend the existing left turn lanes on County N approaching the I-41 ramps



WIS 55

Delanglade Street

- Remains a diamond interchange with roundabouts
- Reconstruct interchange ramps and I-41 bridges over WIS 55 and Maloney Road
- Add a southbound lane along WIS 55 to handle future projected traffic volumes
- Reconstruct Maloney Road under I-41



County J

Lawe Street

- Remains a diamond interchange with roundabouts
- Reconstruct the interchange ramps and County J bridge over I-41
- Improve roundabouts to accommodate oversize/overweight vehicles



Safety and Weight Enforcement Facility (SWEF) and State Patrol Headquarters

- Reconstruct the existing Safety and Weight Enforcement Facility (SWEF) along northbound I-41 south of the County U interchange
- Combine County U exit and SWEF entrance to improve mainline safety



Safety and Weight Enforcement Facility (SWEF) and State Patrol Headquarters

- Construct State Patrol's new Northeast District Headquarters in a two-story building
- Construct a 300- to 400-foot communications tower and a 60- to 80-foot auxiliary tower
- Construction expected to begin in 2024



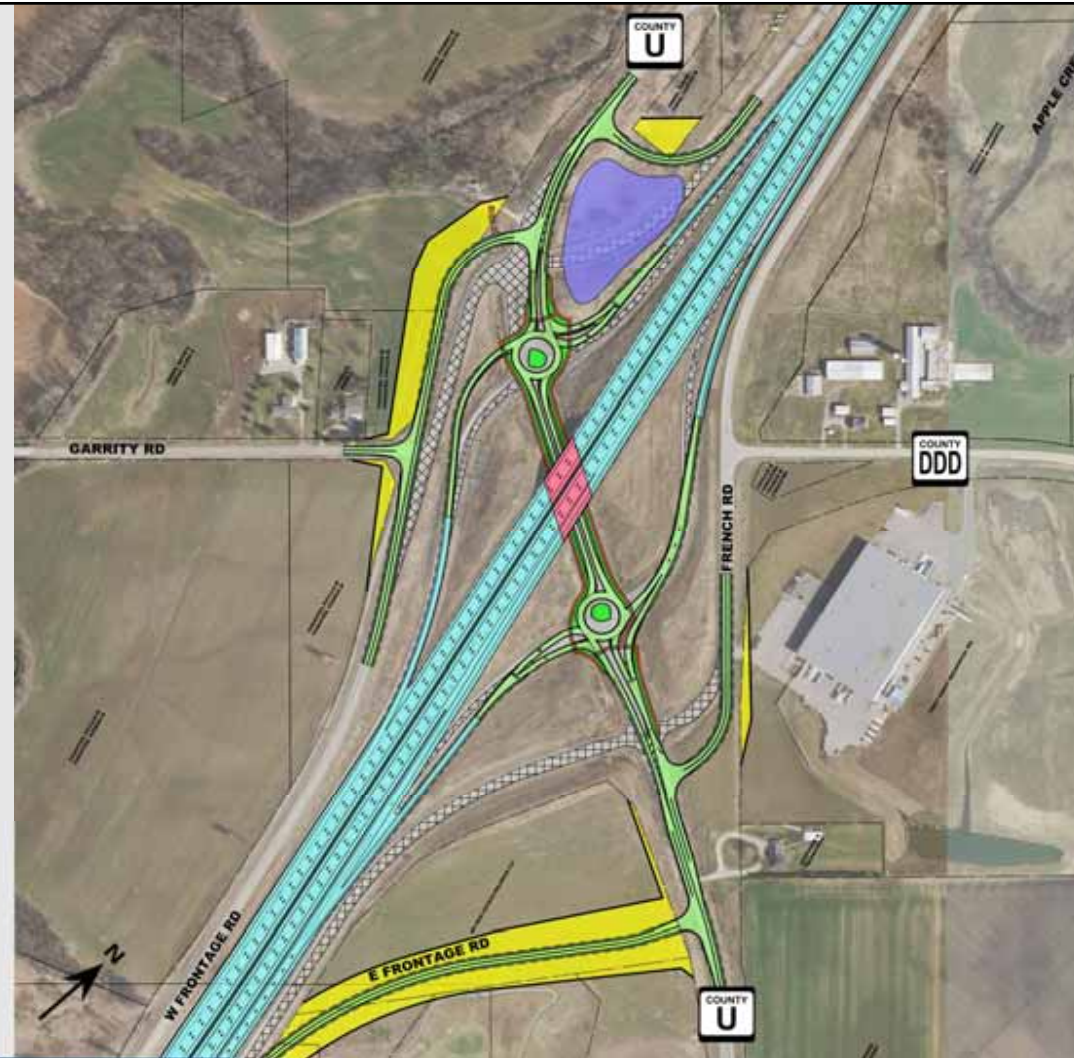
Note: Design is preliminary and subject to change



County U

County Line Road

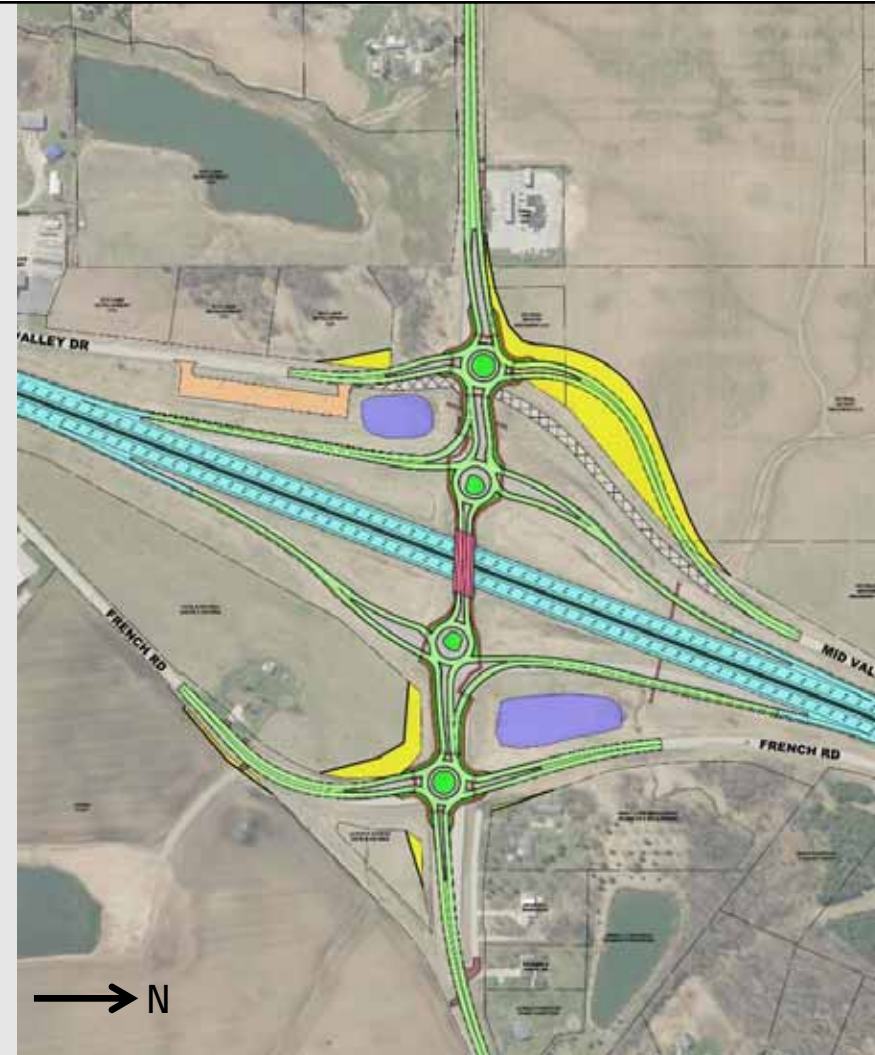
- Reconstruct as a diamond interchange with roundabouts
- Realign West Frontage Road, East Frontage Road, Mid Valley Drive and French Road intersections with County U
- Improve roundabouts and bypass lanes



County S

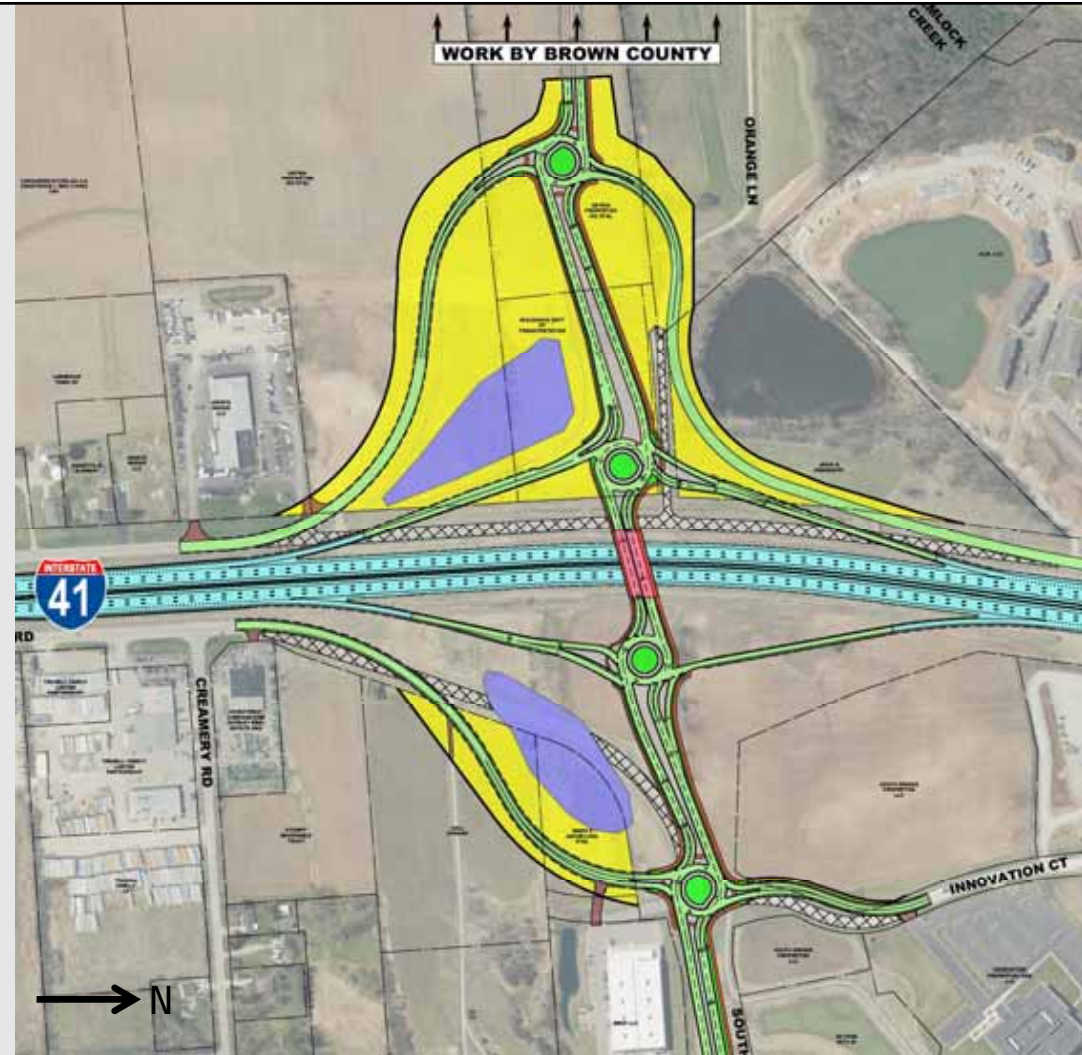
Freedom Road

- Reconstruct as a diamond interchange with roundabouts
- Construct roundabouts at the County S/ Mid Valley Drive and County S/French Road intersections

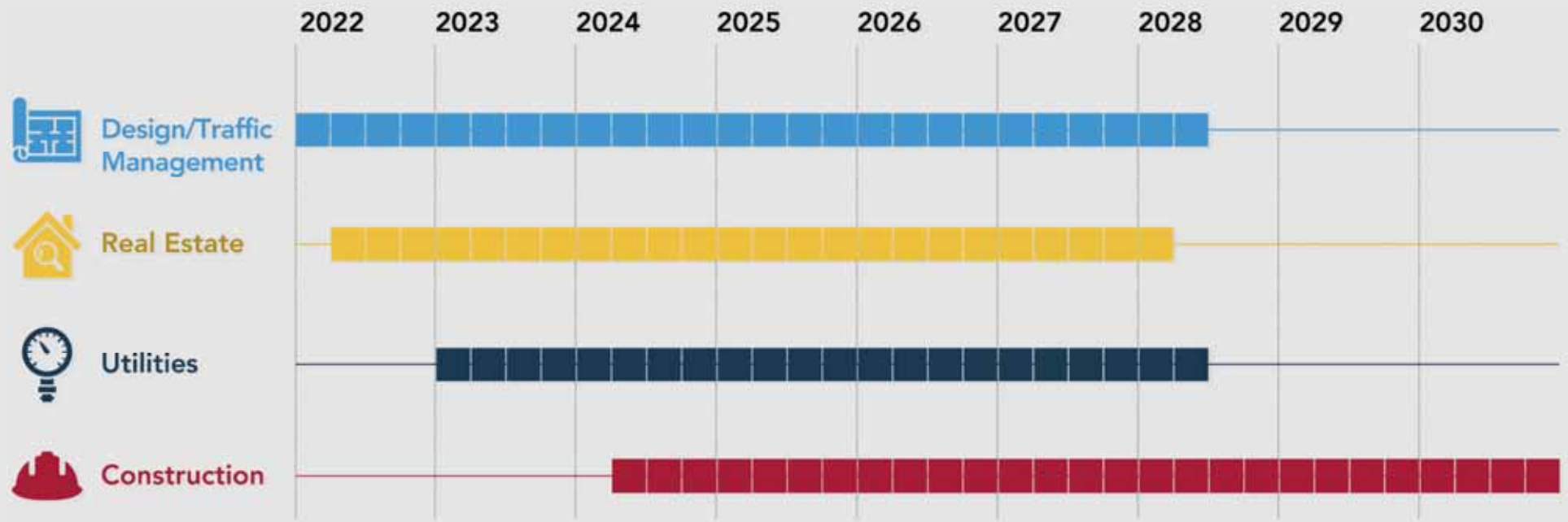


Southbridge Interchange

- Construct a new diamond interchange with multi-lane roundabouts
- Add a shared use path on north side of Southbridge Road
- Brown County's adjacent project work will extend Southbridge to the County EB/County F intersection to the west and to the Southbridge/Lawrence Drive intersection to the east



Project Schedule



Note: Timelines are subject to change



Next Steps: Now Underway

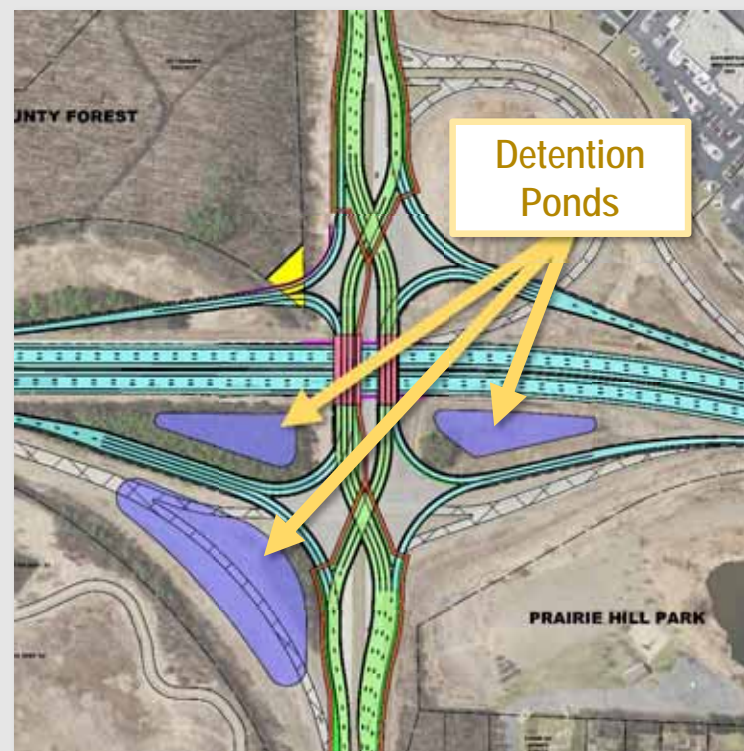
- Field work ongoing for remainder of 2022
 - Survey work
 - Geotechnical investigations



Next Steps: Local Coordination

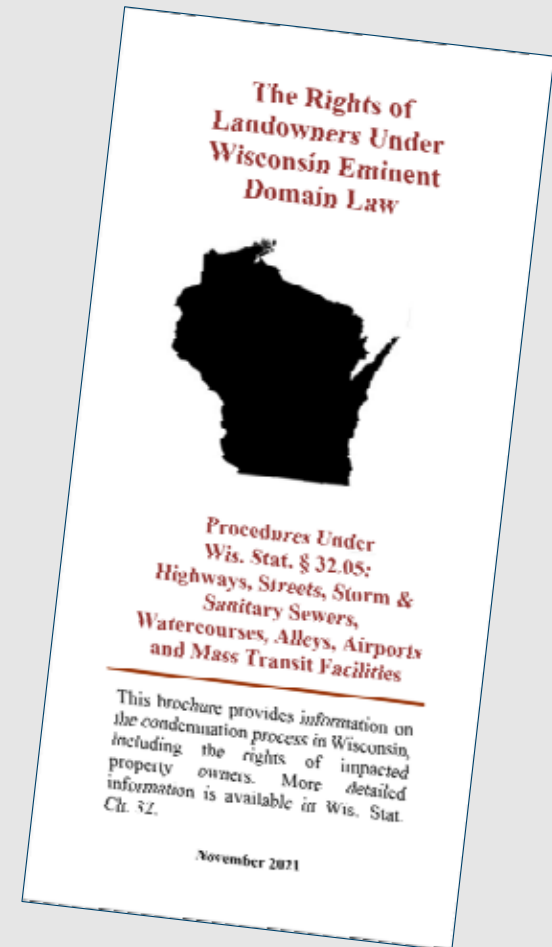
- Stormwater

- Coordination with municipalities on opportunities for shared ponds as part of the project
- Permanent structures to stop/slow runoff, minimizing pollutant concentration in rivers and lakes
- **Examples:** Infiltration basins, detention ponds, bioretention facilities, vegetated roadside swales and hybrid systems



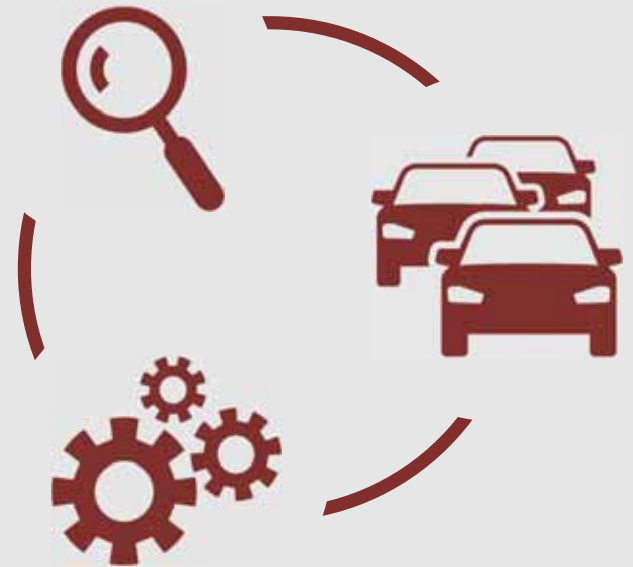
Next Steps: Real Estate

- Early buyouts complete
- Right of way plat expected by spring 2023
- Approximately 300 parcels impacted
- Acquisitions expected to begin in 2023



Next Steps: Transportation Management Planning

- Coordinate traffic impacts with stakeholders along corridor
- Improve work zone safety
- Keep traffic moving during construction
 - Shared diversion route data
 - Signed detour routes and planned alternate routes
 - Access management planning



Next Steps: Transportation Management Planning

- Incident management
 - State Patrol
 - County Sheriff
 - Local police and fire
- Local road operations
 - County highway
 - Local planning and Public Works departments
- Public outreach and multimodal
 - Transit
 - Bike and pedestrian
- Public institutions
 - County parks departments
 - School districts
 - Chamber of Commerce
 - Area colleges



Next Steps: Transportation Management Planning

- Taskforce meetings to begin this fall/winter



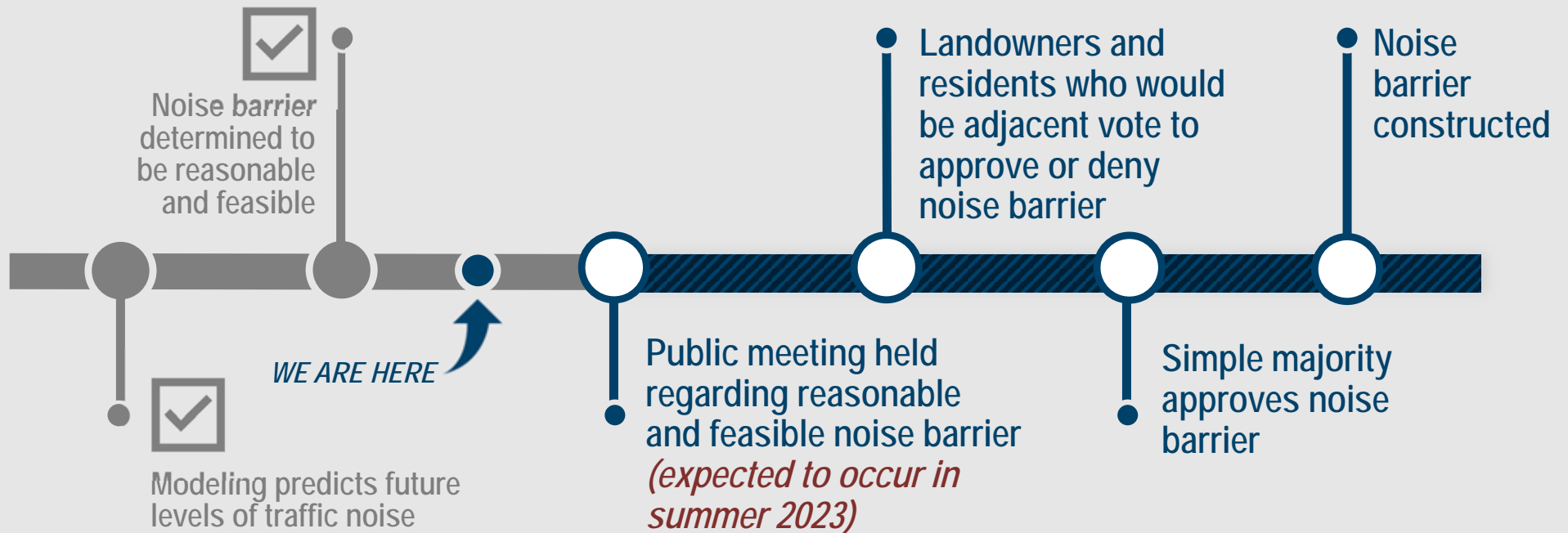
Note: Map depicts select facilities; not a complete list

WisDOT Freeway Service Vehicles

- Specially equipped vehicles patrol high-volume roadways and major work zones
- Offering free roadside services
 - Relocating disabled vehicles
 - Providing small amounts of fuel
 - Changing flat tires, jump-starting batteries
 - Clearing roadway of small non-hazardous debris
 - Assisting with traffic and crash scene clearance



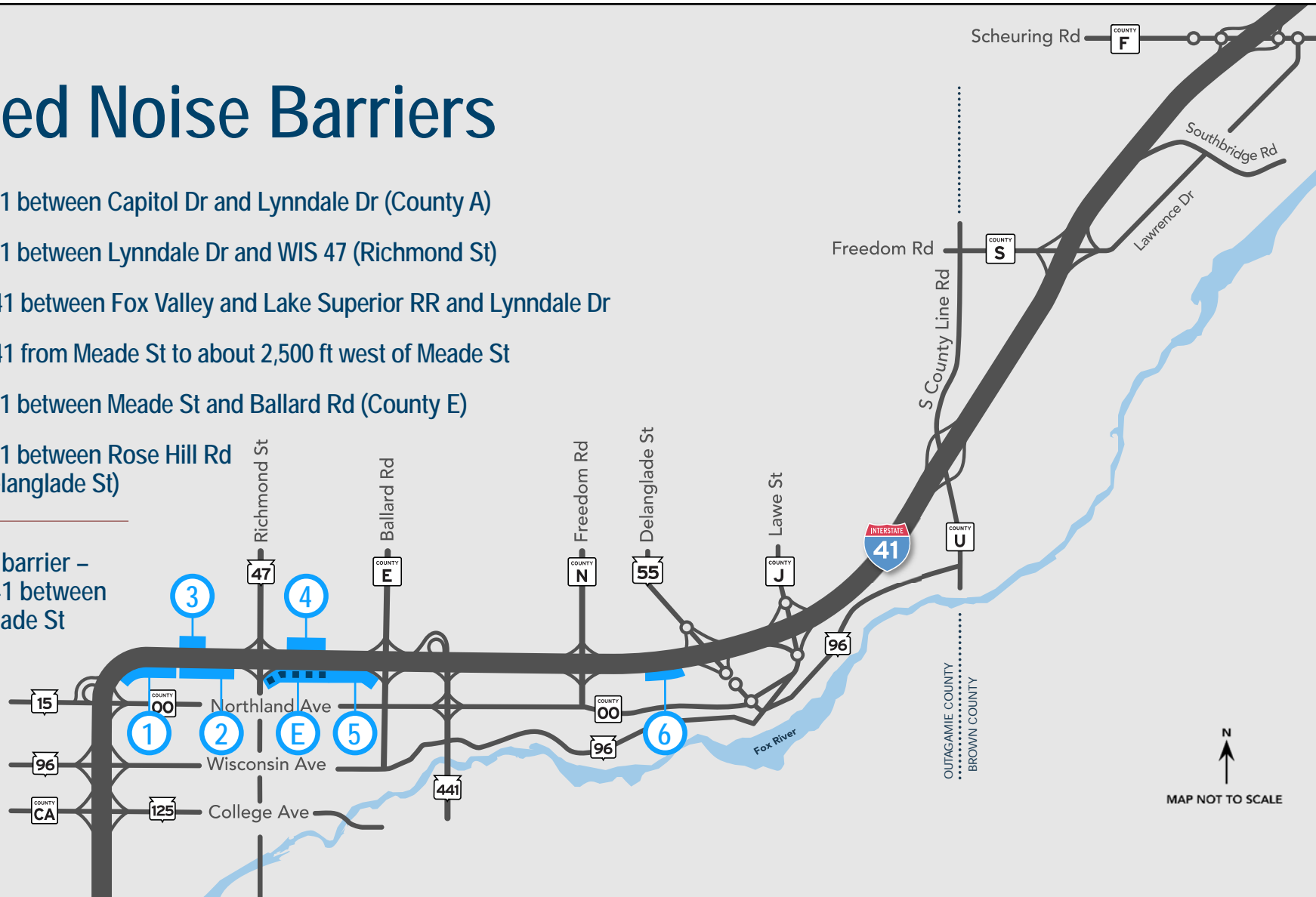
Next Steps: Noise Barriers



Proposed Noise Barriers

- ① Northbound I-41 between Capitol Dr and Lynndale Dr (County A)
- ② Northbound I-41 between Lynndale Dr and WIS 47 (Richmond St)
- ③ Southbound I-41 between Fox Valley and Lake Superior RR and Lynndale Dr
- ④ Southbound I-41 from Meade St to about 2,500 ft west of Meade St
- ⑤ Northbound I-41 between Meade St and Ballard Rd (County E)
- ⑥ Northbound I-41 between Rose Hill Rd and WIS 55 (Delanglade St)

- ⑤ Existing noise barrier – northbound I-41 between WIS 47 and Meade St



Next Steps: Public Outreach



Maintain trust and
credibility within the
community



Be the first and best
source for project
information



Seek input from
the public at project
milestones



WisDOT Will Keep You Informed



CONNECTING
WISCONSIN



FACEBOOK

I41projectWI



TWITTER

@I41projectWI



WEBSITE

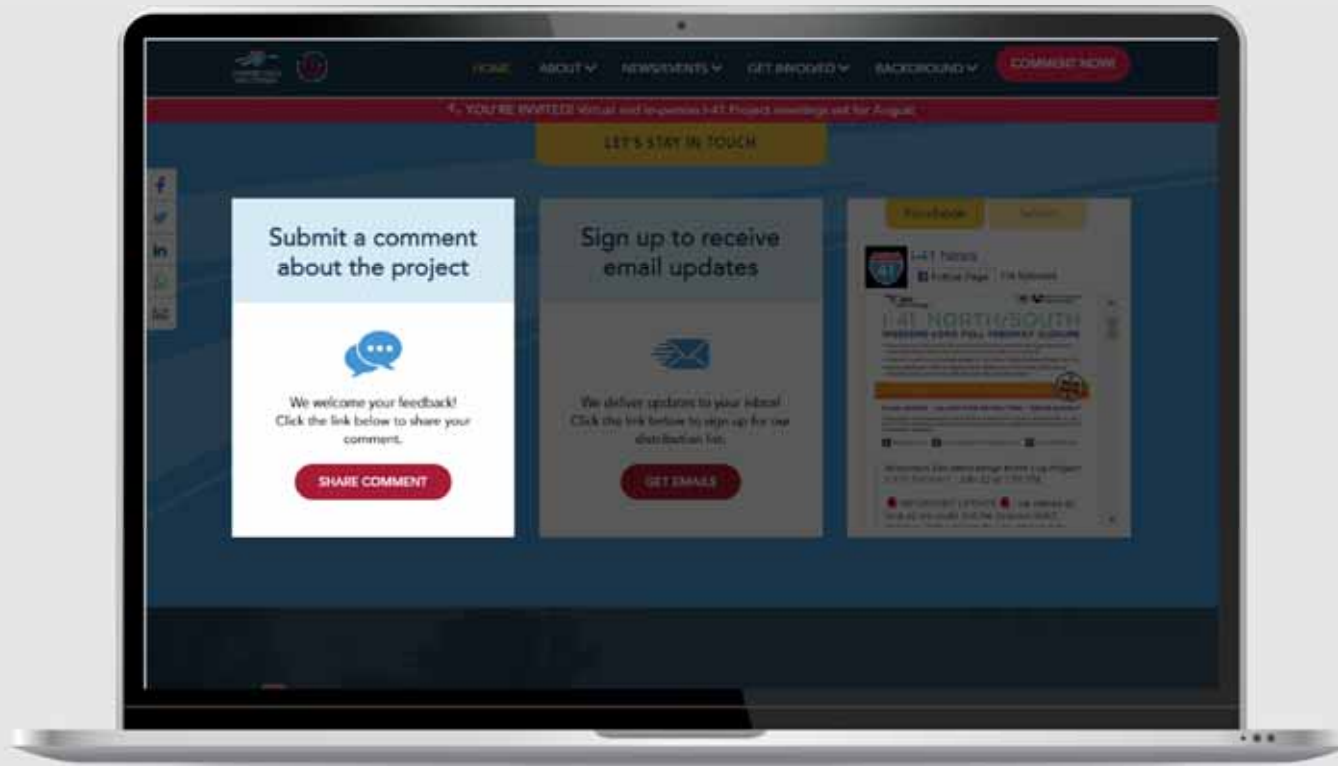
I41project.wisconsindot.gov



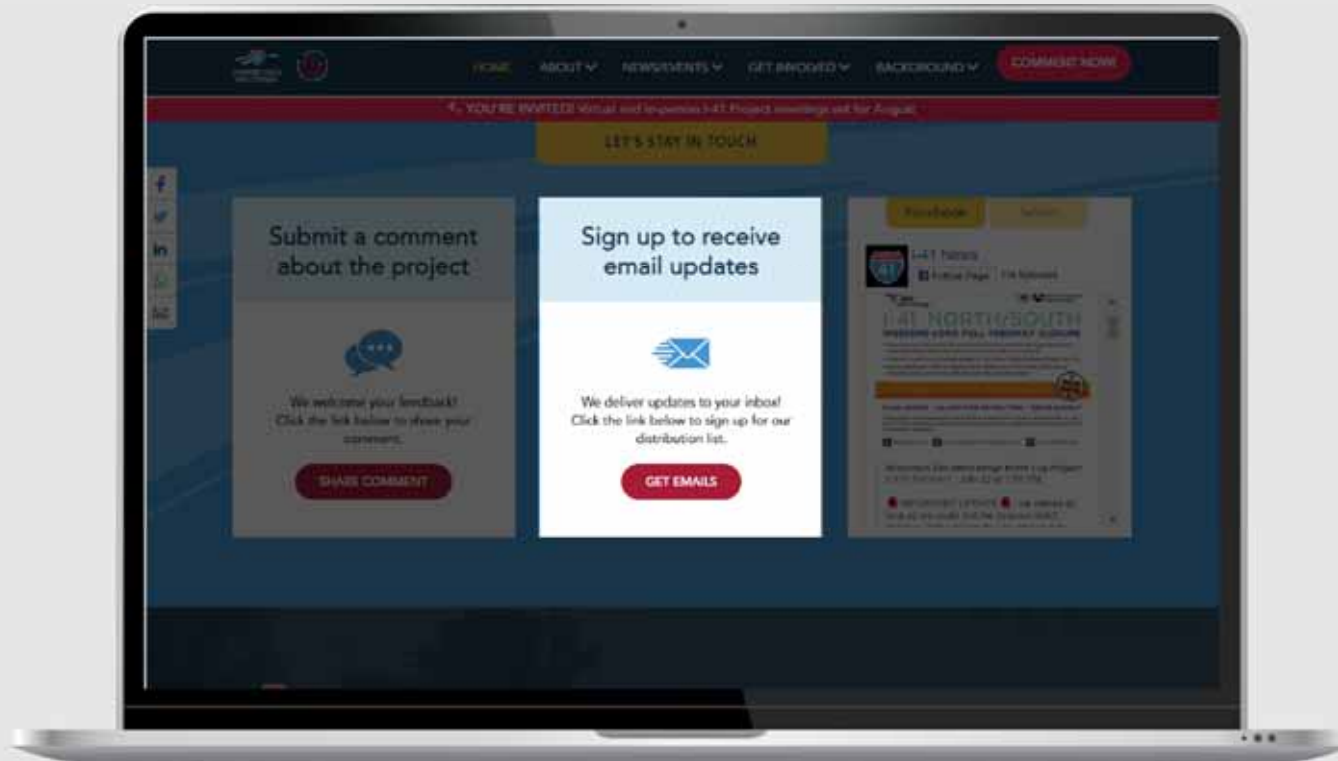
Visit Our New Website! i41project.wisconsin.gov



Submit Your Comments! i41project.wisconsindot.gov



Sign up for Project Emails! i41project.wisconsindot.gov



Next Steps: Business Outreach



COORDINATE WITH
BUSINESSES ALONG
PROJECT CORRIDOR



PROVIDE FIRSTHAND
INFORMATION AT
MILESTONES



IDENTIFY NEEDS AND
CONCERNS BEFORE
AND DURING
CONSTRUCTION



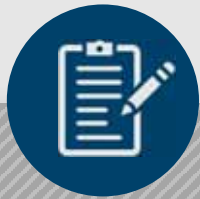
Business Coordination

We're In This Together!

- Visit wisconsindot.gov/together
 - Tips, tools and resources
 - New (2021) business coordination guide
- Project team is here to help
 - What information would help you...
 - Inform customers about the project?
 - Coordinate with suppliers?
 - Communicate with employees?



Hearing from You: Comment After the Meeting



Paper copies of the
comment form are
near the sign-in tables
and can be mailed in



Submit your comment
ANY TIME
on our website:
I41Project.WisconsinDOT.gov



i41project.wisconsindot.gov

Learn at your Leisure!

After the meeting, view / download
all materials from our website

- Watch recording of the presentation
- View detailed exhibits
- Read comprehensive handout
- Subscribe for email updates
- Submit your comments
- Follow project progress





CONNECTING WISCONSIN

Thank you for attending!

Diverging Diamond Interchange



Easy navigation,
guides drivers with:

- Overhead signs
- Pavement markings
- Traffic signals

Meets the needs of
all road users

- Large trucks
- Pedestrians
- Bicyclists

Improved Safety and Capacity

- Moves more traffic
- Free-flow right and left turns onto freeway
- Reduces conflict points by nearly half

