

Solo Bistro Bistro

Wood Sculpture: Freeing the Form

Les Otten Energized

# MaineHOME+ DESIGN

March 2008



## Sebago Retreat

Minimalist Design  
on the Water's Edge

## 200-year-old Barn

Revitalized in Black & White

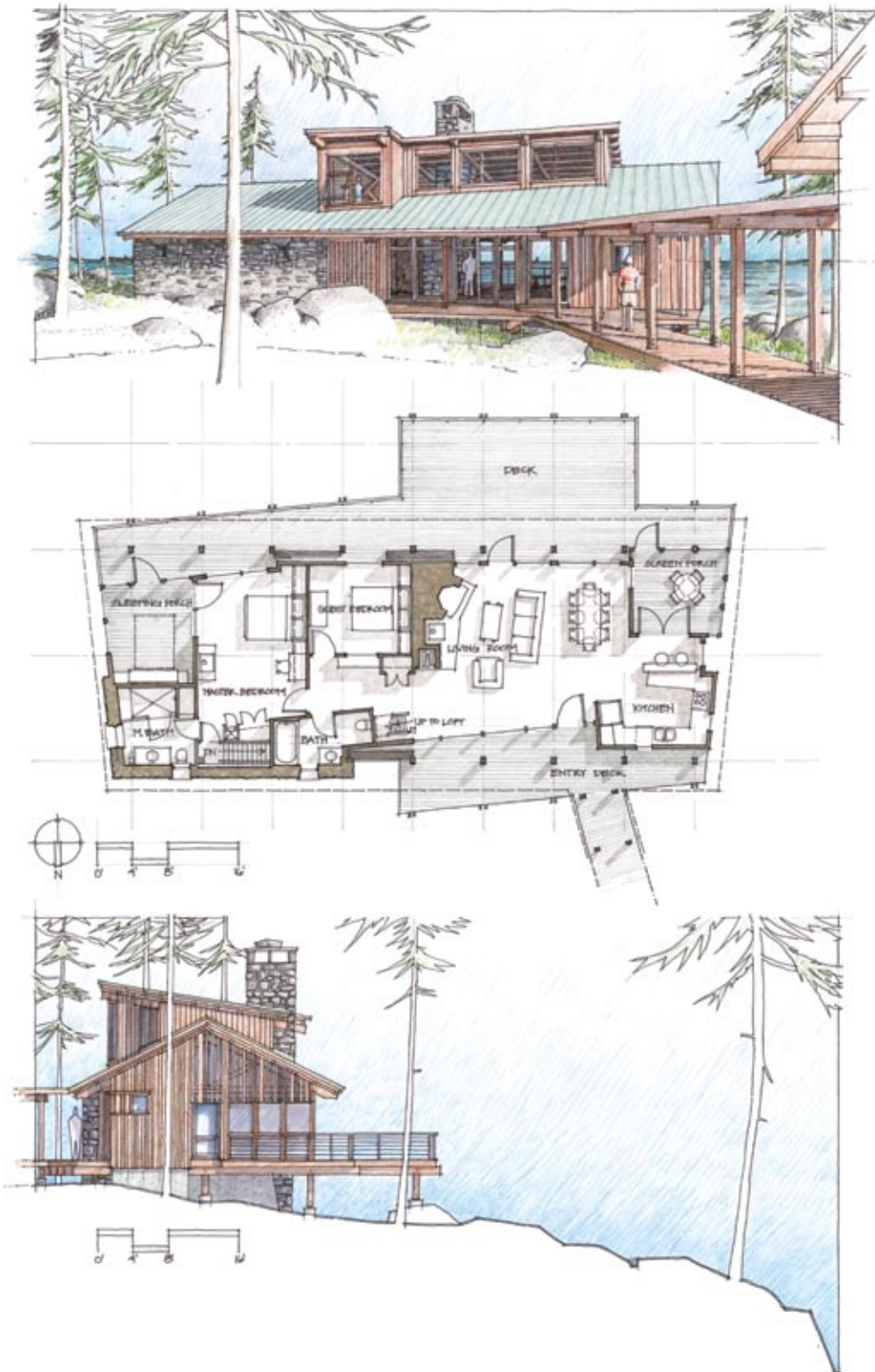
+

## Falmouth Foreside Classic

Entertaining the Casual + the Elegant

# From Paper to Nature

Stepping softly where they build, Whitten Architects is designing an environmentally sensitive timber frame home on the remote oceanfront site of Johnson Cove. Conceived to have minimal impact on vegetation, tree cover, and natural drainage patterns, the year-round home will integrate outdoor rooms, protective roof overhangs, energy-efficient appliances, and the wealth of nature's wind and solar powers. Architect Russ Tyson's stunning, hand-drawing of the design is broken by slight angular plane shifts that allow each room specific views of the ocean and distant islands. A raised clerestory simultaneously draws soft northern light to the main living space and becomes a welcoming beacon. **MH+D**



Location: Roque Bluffs  
 Main Living Space: 620 square feet  
 Master Bedroom Suite: 385 square feet  
 Porches: 220 square feet  
 Loft: 140 square feet  
 Exterior Decks: 1,200 square feet  
 Barn: 1,250 square feet (not shown)  
 Total Square Footage: 3,815

**Drawings: Spring 2007**  
**Construction: Spring 2008**  
**Completed: Spring 2009**