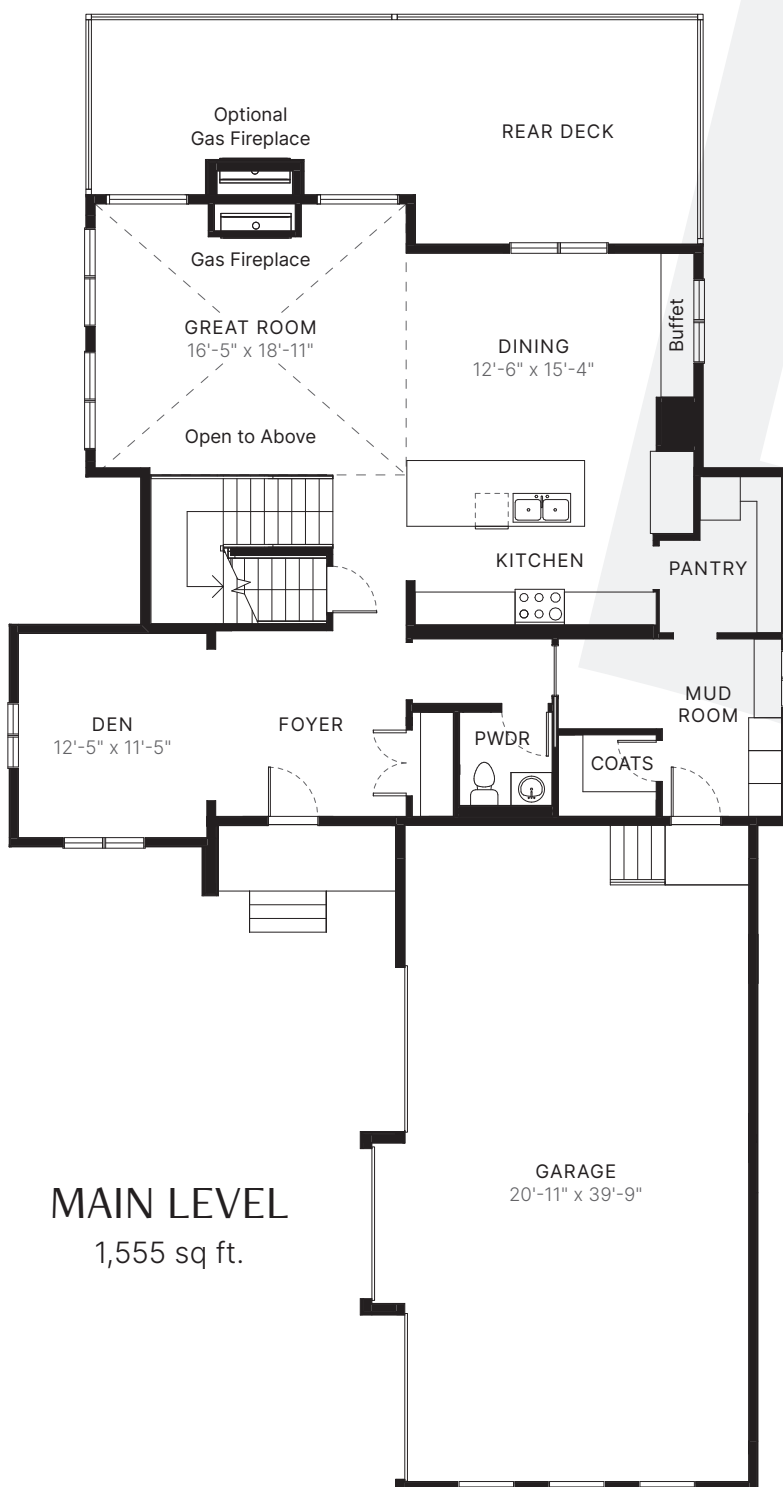


# ALBERNI

3 bed + den  
2.5 bath

TOTAL SPACE  
2,915 sq ft.



MAIN LEVEL  
1,555 sq ft.

FIFTH  
HOMES

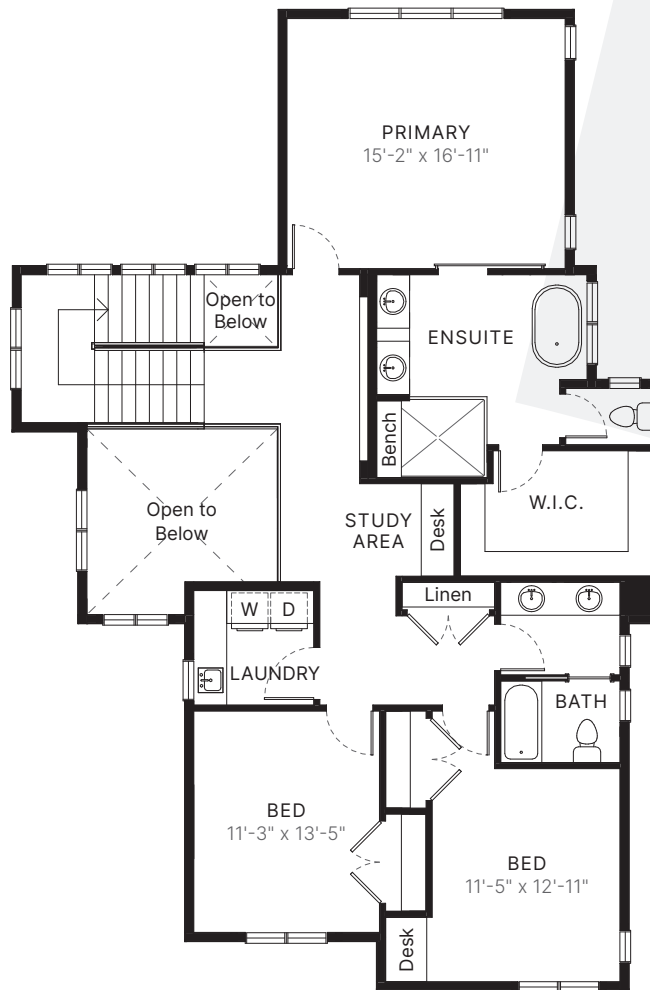
AVENUE

The builder reserves the right to modify or change plans, specifications, features and prices without notice. Materials may be substituted with equivalent or better at the builder's sole discretion. All dimensions and sizes are approximate and are based on architectural measurements. As reverse, mirrored and/or flipped plans occur throughout the building, please see architectural plans if material to your decision to purchase. Renderings, furnishings and equipment shown are an artist's conception and are intended as a general reference only. Please see disclosure statement for specific offering details. E. & O.E.

# ALBERNI

3 bed + den  
2.5 bath

TOTAL SPACE  
2,915 sq ft.

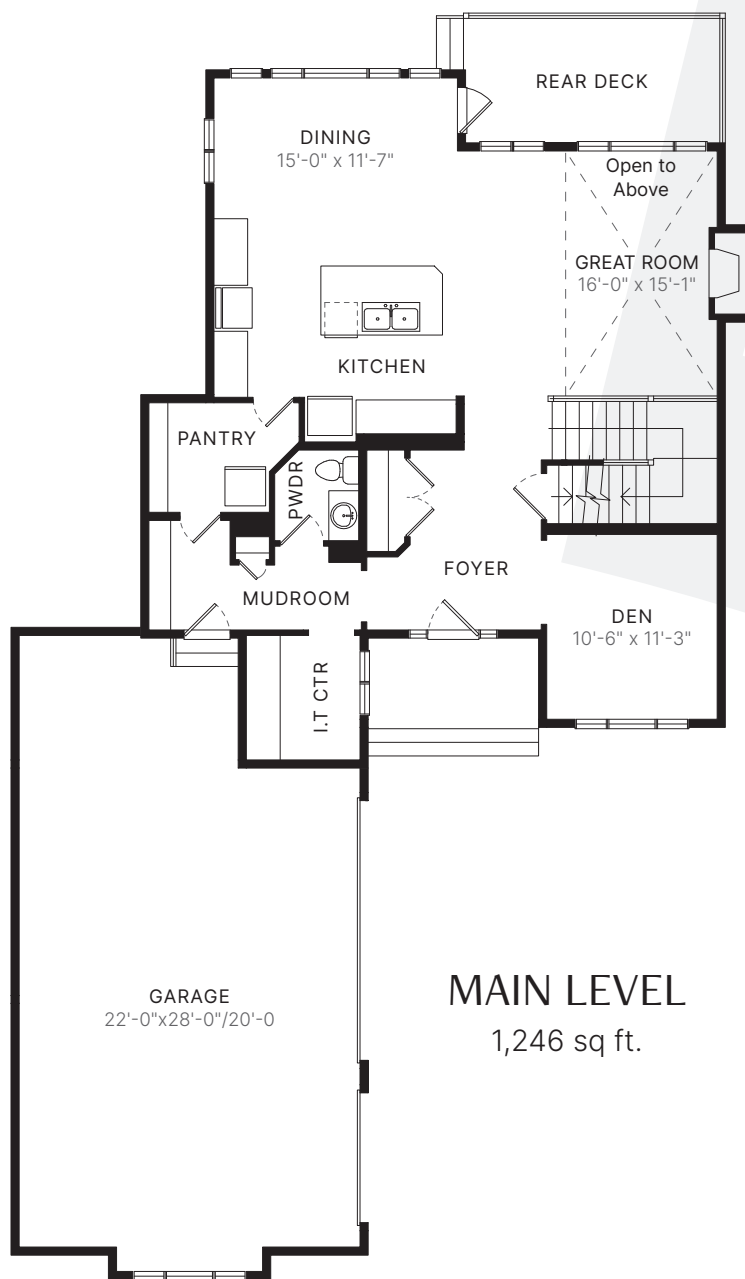


UPPER LEVEL  
1,360 sq ft.

# BERKELEY

3 bed + den  
2.5 bath

TOTAL SPACE  
2,635 sq ft.

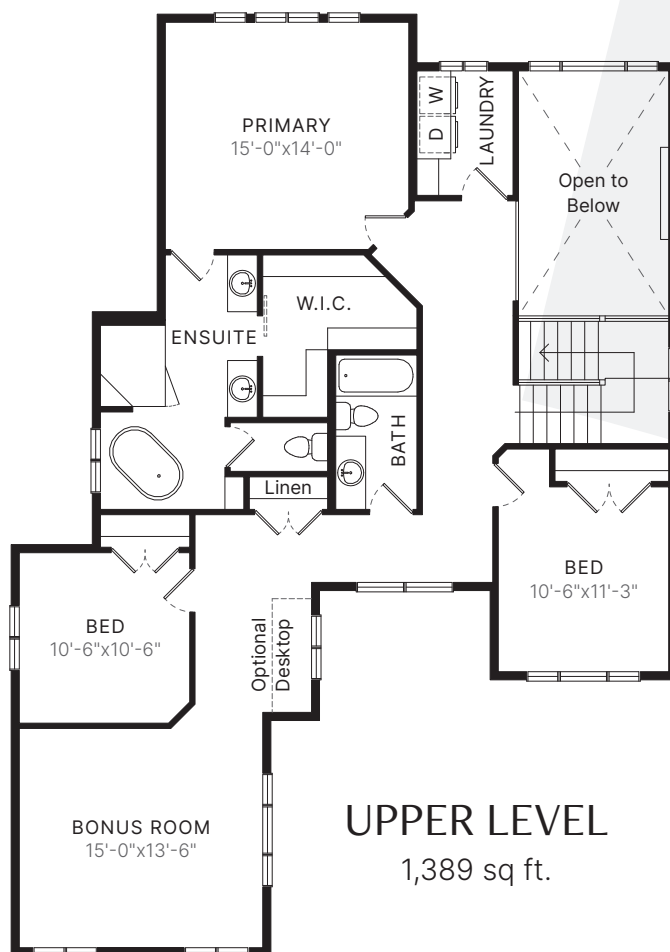


MAIN LEVEL  
1,246 sq ft.

# BERKELEY

3 bed + den  
2.5 bath

TOTAL SPACE  
2,635 sq ft.



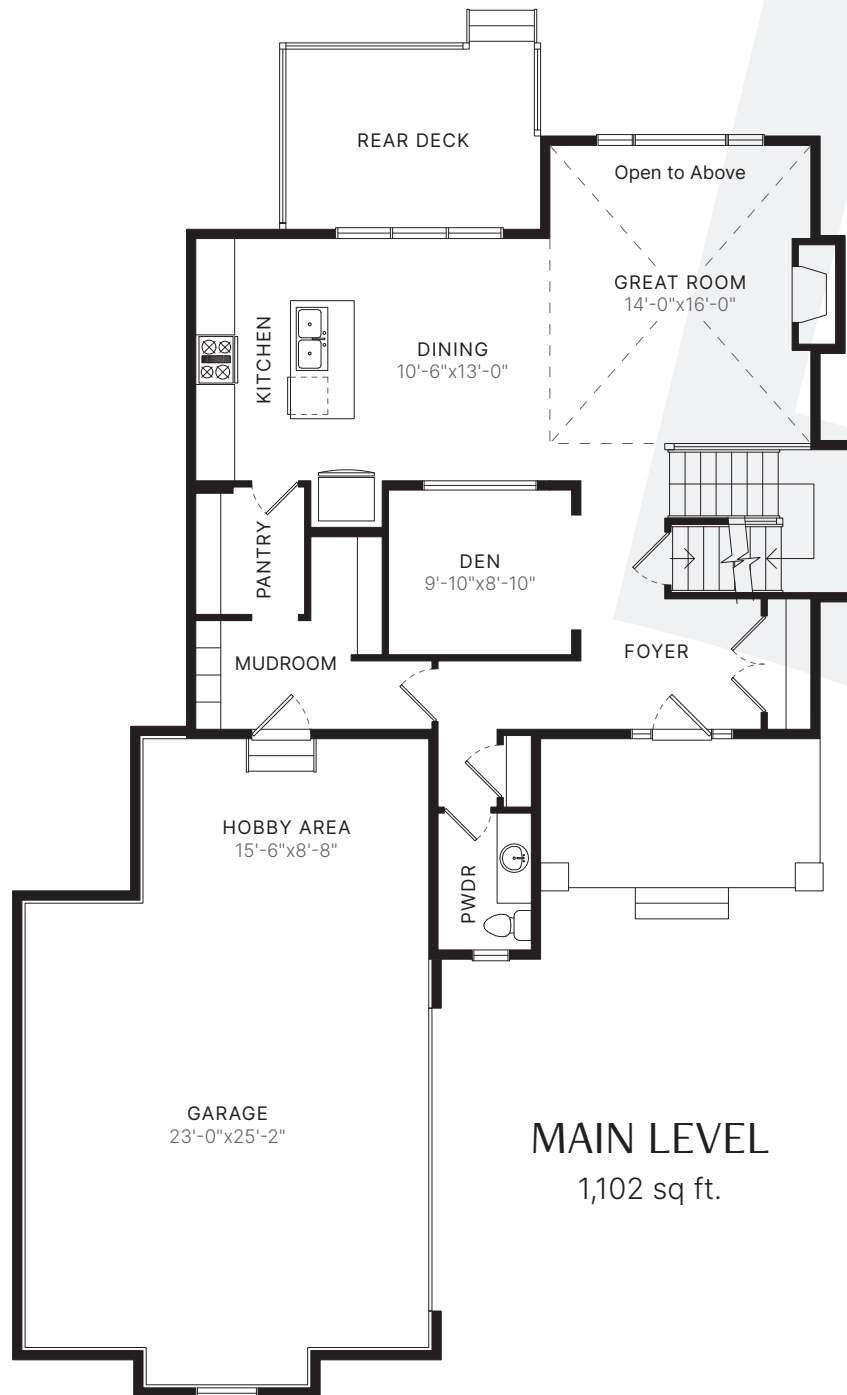
**FIFTH** AVENUE  
**HOMES**

The builder reserves the right to modify or change plans, specifications, features and prices without notice. Materials may be substituted with equivalent or better at the builder's sole discretion. All dimensions and sizes are approximate and are based on architectural measurements. As reverse, mirrored and/or flipped plans occur throughout the building, please see architectural plans if material to your decision to purchase. Renderings, furnishings and equipment shown are an artist's conception and are intended as a general reference only. Please see disclosure statement for specific offering details. E. & O.E.

# OLIVER

3 bed + den  
2.5 bath

TOTAL SPACE  
2,371 sq ft.



**MAIN LEVEL**  
1,102 sq ft.

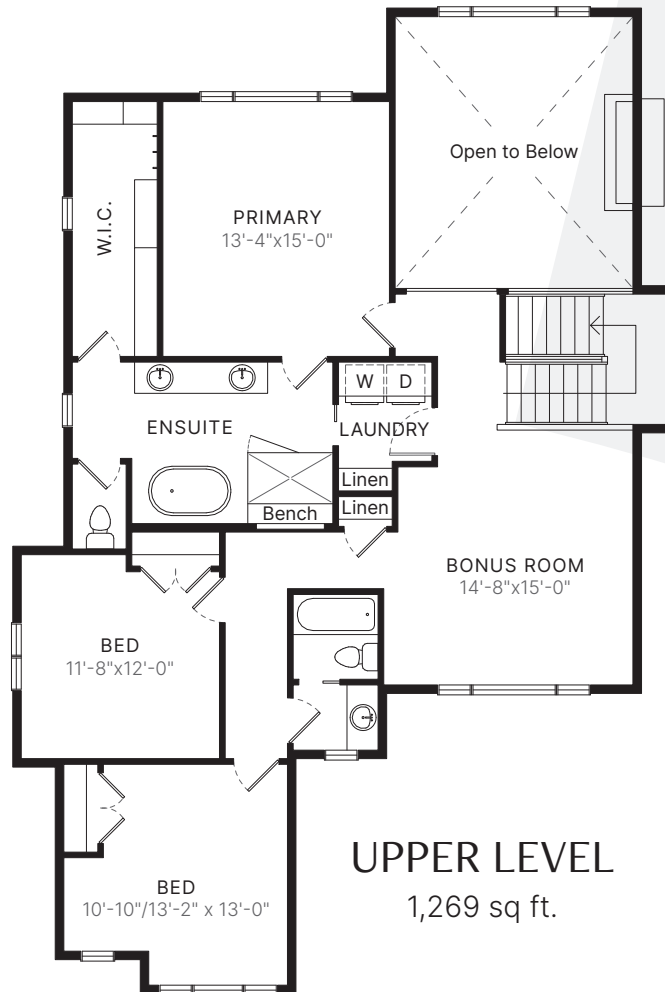
**FIFTH** AVENUE  
**HOMES**

The builder reserves the right to modify or change plans, specifications, features and prices without notice. Materials may be substituted with equivalent or better at the builder's sole discretion. All dimensions and sizes are approximate and are based on architectural measurements. As reverse, mirrored and/or flipped plans occur throughout the building, please see architectural plans if material to your decision to purchase. Renderings, furnishings and equipment shown are an artist's conception and are intended as a general reference only. Please see disclosure statement for specific offering details. E. & O.E.

# OLIVER

3 bed + den  
2.5 bath

TOTAL SPACE  
2,371 sq ft.



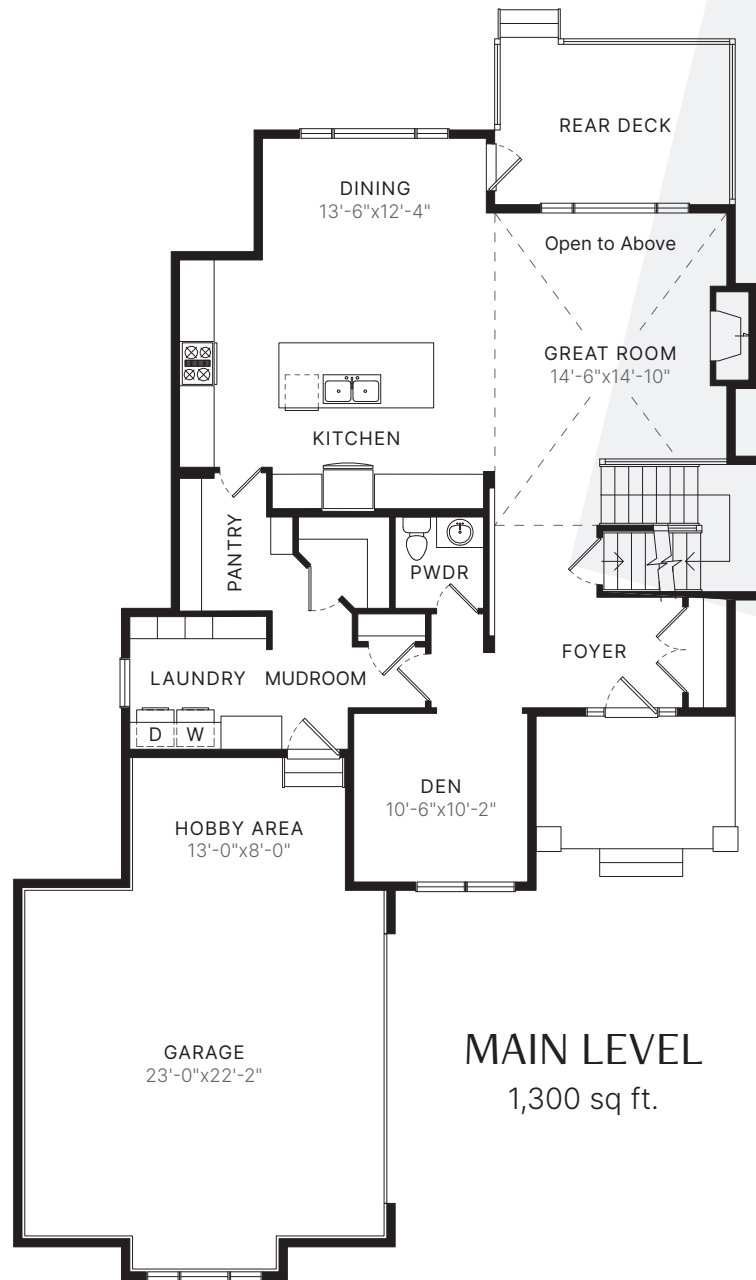
**FIFTH** AVENUE  
**HOMES**

The builder reserves the right to modify or change plans, specifications, features and prices without notice. Materials may be substituted with equivalent or better at the builder's sole discretion. All dimensions and sizes are approximate and are based on architectural measurements. As reverse, mirrored and/or flipped plans occur throughout the building, please see architectural plans if material to your decision to purchase. Renderings, furnishings and equipment shown are an artist's conception and are intended as a general reference only. Please see disclosure statement for specific offering details. E. & O.E.

# STERLING

3 bed + den  
2.5 bath

TOTAL SPACE  
2,497 sq. ft.



MAIN LEVEL  
1,300 sq. ft.

FIFTH  
HOMES

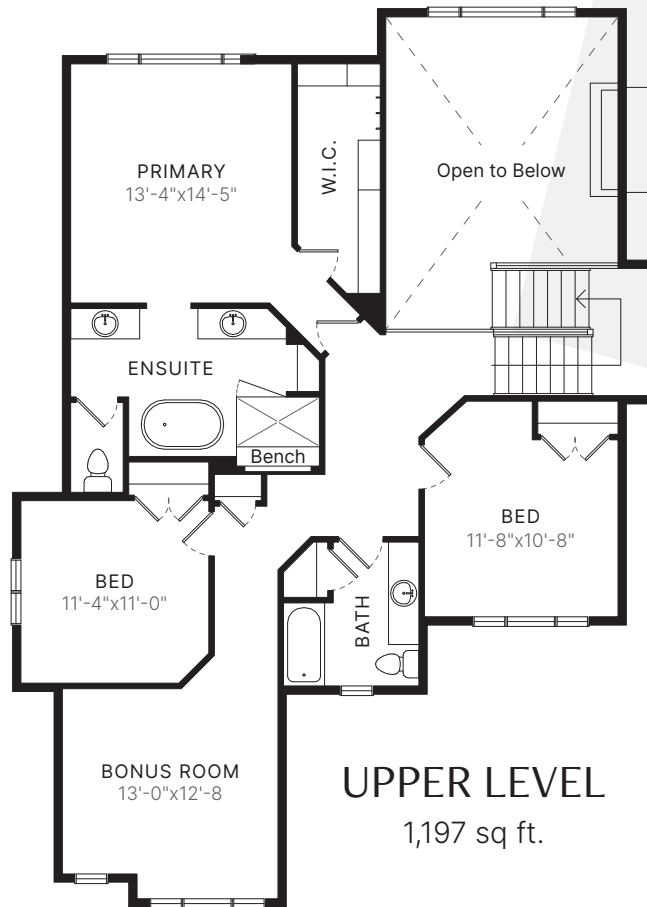
AVENUE

The builder reserves the right to modify or change plans, specifications, features and prices without notice. Materials may be substituted with equivalent or better at the builder's sole discretion. All dimensions and sizes are approximate and are based on architectural measurements. As reverse, mirrored and/or flipped plans occur throughout the building, please see architectural plans if material to your decision to purchase. Renderings, furnishings and equipment shown are an artist's conception and are intended as a general reference only. Please see disclosure statement for specific offering details. E. & O.E.

# STERLING

3 bed + den  
2.5 bath

TOTAL SPACE  
2,497 sq ft.



UPPER LEVEL  
1,197 sq ft.

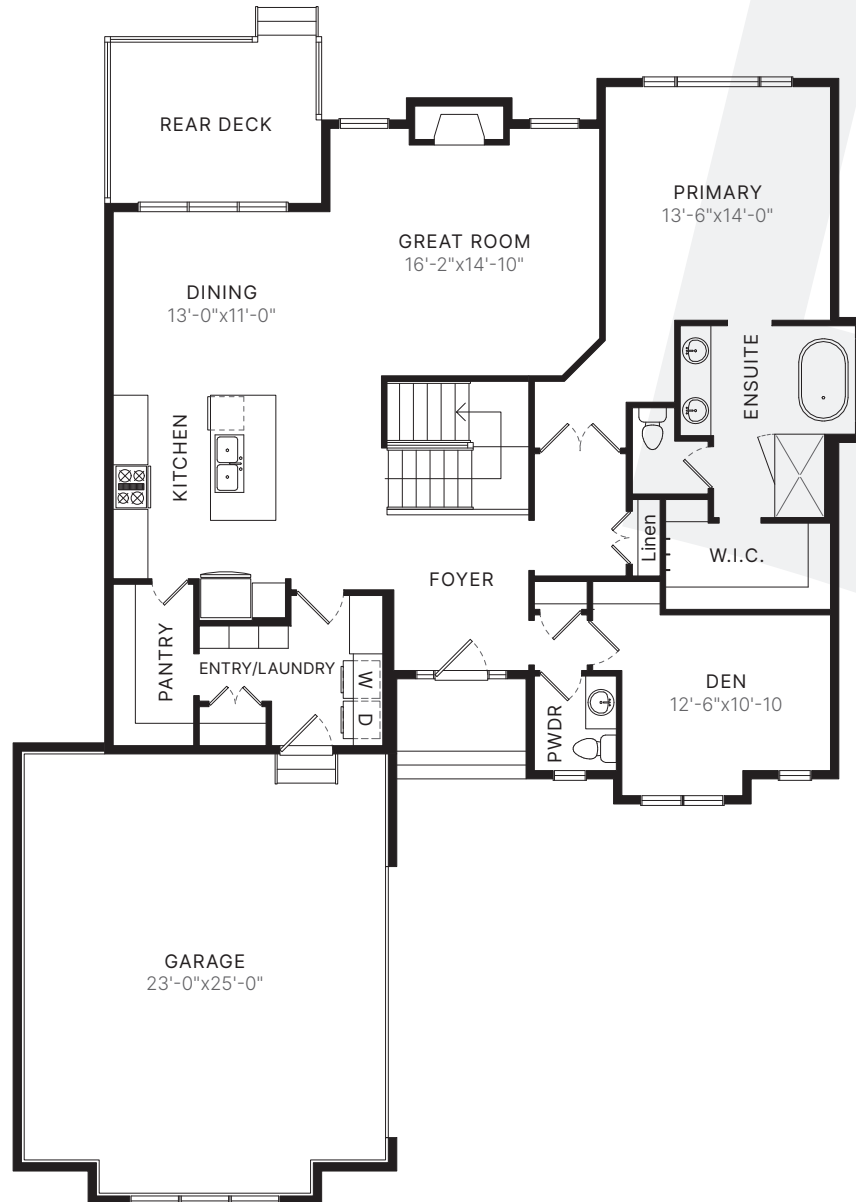


# FULTON

BUNGALOW

1 bed + den  
1.5 bath

TOTAL SPACE  
1,670 sq ft.



**FIFTH** AVENUE  
**HOMES**

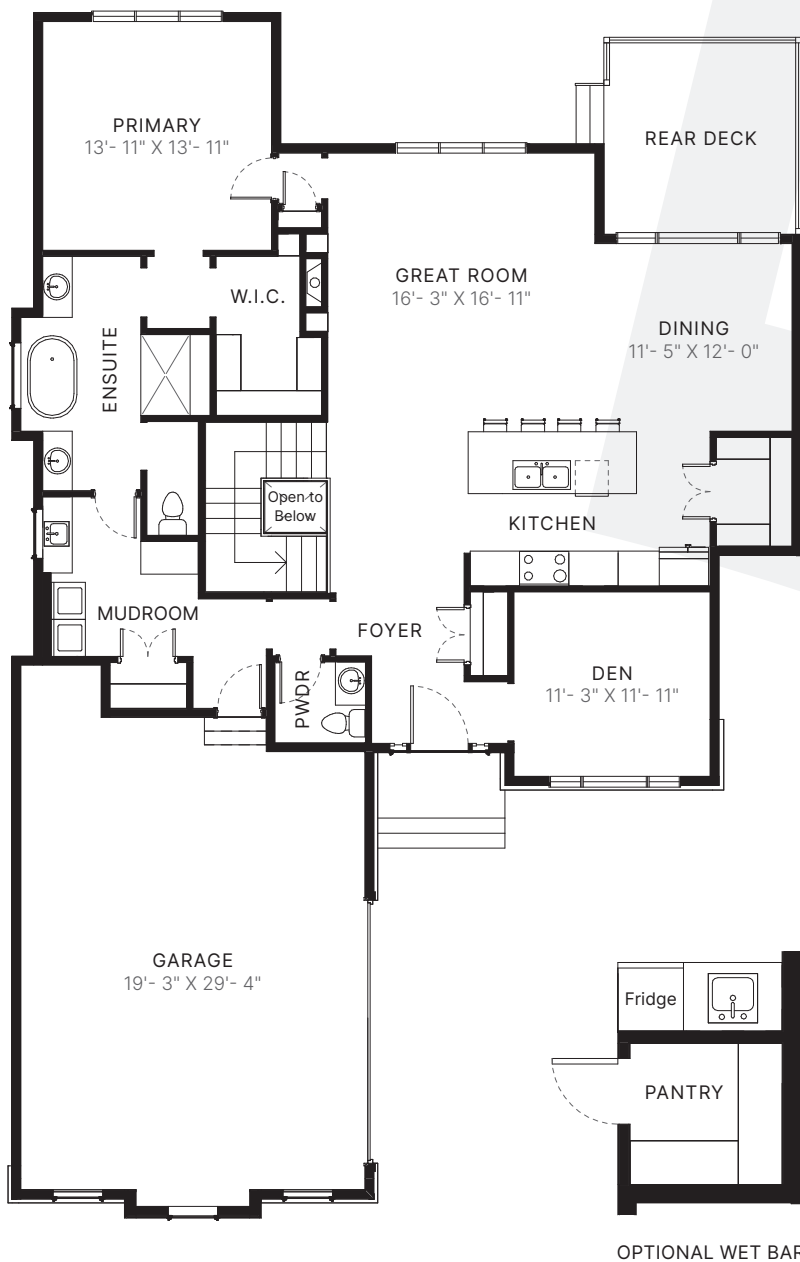
The builder reserves the right to modify or change plans, specifications, features and prices without notice. Materials may be substituted with equivalent or better at the builder's sole discretion. All dimensions and sizes are approximate and are based on architectural measurements. As reverse, mirrored and/or flipped plans occur throughout the building, please see architectural plans if material to your decision to purchase. Renderings, furnishings and equipment shown are an artist's conception and are intended as a general reference only. Please see disclosure statement for specific offering details. E. & O.E.

# STANTON

BUNGALOW

1 bed + den  
1.5 bath

TOTAL SPACE  
1,619 sq ft.



FIFTH  
HOMES

AVENUE

The builder reserves the right to modify or change plans, specifications, features and prices without notice. Materials may be substituted with equivalent or better at the builder's sole discretion. All dimensions and sizes are approximate and are based on architectural measurements. As reverse, mirrored and/or flipped plans occur throughout the building, please see architectural plans if material to your decision to purchase. Renderings, furnishings and equipment shown are an artist's conception and are intended as a general reference only. Please see disclosure statement for specific offering details. E. & O.E.