

# EBA 2127

max.  
**23**  
sheets

← **26 cm** →

Our entry model in the category of office document shredders with 260 mm feed opening and a large shred bin capacity.

**Level P-2** 4 mm strip cut (S)

Sheet capacity\*: 21-23 | 18-20

**Level P-4** 4 x 40 mm particle cut (C)

Sheet capacity\*: 16-18 | 13-15

**Level P-5** 2 x 15 mm particle cut (C)

Sheet capacity\*: 10-12 | 8-10

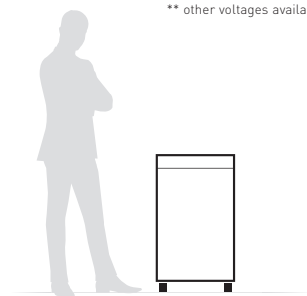


\* A4 paper 70 g/m<sup>2</sup> | 80 g/m<sup>2</sup>

## Technical specifications

<b>Volume</b>	100 litres (cabinet)
	75 litres (shred bin)
<b>Power</b>	230 V / 50 Hz**
<b>Motor capacity</b>	580 Watt single phase motor

\*\* other voltages available



<b>Dimensions</b>	870 x 500 x 377 mm (H x W x D)
<b>Weight</b>	30 kg / 30.5 kg (particle cut)

## Product characteristics

SPS – (Safety Protection System) package: patented, electronically controlled, transparent safety flap in the feed opening as additional safety element; EASY-SWITCH – intelligent control element indicating the operational status of the shredder with varying colour codes and back-lit symbols; automatic reverse and power cut-off (avoids paper jams); automatic stop if the shred bin is full; electronic door protection via a magnetic proximity switch; double motor protection; ZERO ENERGY standby mode: Complete, automatic disconnection from power supply after 15 minutes. Photo cell controlled automatic start and stop. High-quality, paper clip proof cutting shafts from special hardened steel with lifetime guarantee. Strip cut model suitable for shredding the most common CDs/DVDs. Quiet but powerful single phase motor. Fully closed gear box housing and durable gears. High-quality wooden cabinet, mobile on castors. Convenient environmentally-friendly shred bin (no disposable shred bags required).

# EBA

**SMARTeCH**  
Business Systems

# EBA 2127

## Features



### SOLID STEEL CUTTING SHAFTS

Robust and durable: high-quality paper clip proof cutting shafts with lifetime guarantee under conditions of fair wear and tear.



### EASY-SWITCH

Ease of operation: intelligent multifunction switch element with integrated optical signals indicating the operational status. Additional "emergency switch" function.



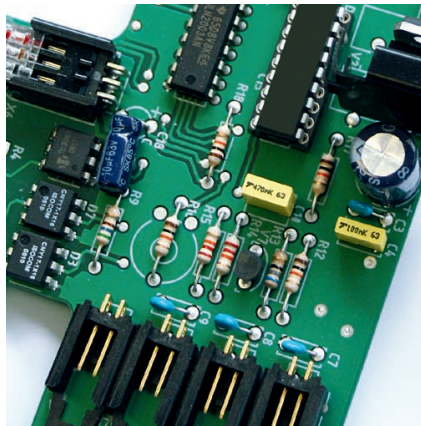
### PATENTED SAFETY FLAP

Extremely safe: electronically controlled safety flap in the feed opening to keep fingers, ties or other objects away from the cutting shafts.



### CONVENIENT SHRED BIN

The environmentally-friendly shred bin can be removed easily and cleanly from the cabinet. The bin can be used with or without disposable shred bag.



### AUTOMATIC FUNCTIONS

Tried and tested: Reliable printed circuit board controlling all automatic functions of the shredder including the energy saving mode.



### FIRST-CLASS COMPONENTS

Quality in every detail: cabinet with adjustable metal hinges and attractively designed swivel castors.



UL US  
 I.T.E. Listed 802 D



[www.blauer-engel.de/uz174](http://www.blauer-engel.de/uz174)