

Duplo



DC-648

Slitter/Cutter/Creaser

DC-648 SPECIFICATIONS

Speed	Up to 40 sheets per minute (8.5" x 11" 2 cuts, 1 crease and camera setting off)
Input Paper Size	8.26" x 8.26" to 14.56" x 39.37" (210 mm x 210 mm to 370 mm x 1,000 mm) Maximum length with standard feed and exit tray is 27.95"
Min. Finished Size	1.89" x 1.97" (48 mm x 50 mm)
Tolerance	+/-0.2 mm. When running sheets heavier than 350 gsm, the tolerance for slitting and creasing is +/-0.3 mm (+/- 0.4 mm for business cards) **The tolerance of creasing may be affected by the number of creases and/or their depths **With documents longer than 26", the tolerance for slitting is +/- 0.6 mm and for cutting/creasing +/- 1.4 mm
Feeder Capacity	4.72" (120 mm)
Paper Weight	110 - 400 gsm
Slits	Up to 8 per sheet (6 standard slitter tools with 2 margin slitters and 4 center slitters Optional slitter module with a set of 2 slitters can be added)
Cuts	Up to 30 per sheet
Creases	Up to 20 per sheet (interchangeable 1.2 mm and 1.4 mm widths)
Memory	250 jobs using the control panel
Standard Features	Air knife, card stacker, fan registration, automatic gutter slit deflectors, crease depth adjustment, ultrasonic double feed detection sensor, feed skew adjustment, batch separation, waste box, emergency stop switch, on-the-fly rejection, camera sensor, PC Controller software, PC pole mount, LCD control panel
Options	<ul style="list-style-type: none">• PC and PC Arm, 48" long conveyor stacker, and elevating card stacker• RTM-09 Rotary Tool Module includes 2 each of perforation, micro-perforation, scoring, and slit-scoring tools. Up to 3 RTM-09s can be installed in the unit at one time, replacing slitter modules• CPM-09 Cross Perforation Module includes 1 each of perforation, micro-perforation, and slit-scoring tools• The OPK-03 PCB kit must be installed when using any of the optional modules but only one kit is needed to use multiple modules
Power Requirements	115V: 5.5A, 60Hz
Dimensions (WxDxH)	95" x 35" x 44" (2,430 mm x 885 mm x 1,120 mm)
Net Weight	758 lb (344 kg)

* The DC-648 can be adjusted to process banner sheets up to 39" in length. Length is 31" (787 mm) when using standard long paper feed tray.
Production rates are based on optimal conditions and may vary depending on stock and enviromental conditions.






Duplo

The leading provider of innovative precision finishing, print embellishment, and specialty finishing solutions.
Contact us today to request samples or to get in touch with a finishing specialist.

Duplo USA Corporation

3050 S. Daimler St.
Santa Ana, California 92705
Toll Free: 1-800-255-1933
Telephone: 1-949-752-8222
Email: sales@duplousa.com

Find Us Online

-  duplousa.com
-  [linkedin.com/company/duplo-usa-corporation](https://www.linkedin.com/company/duplo-usa-corporation)
-  [facebook.com/duplousa](https://www.facebook.com/duplousa)
-  twitter.com/duplousa
-  [youtube.com/duplousa](https://www.youtube.com/duplousa)

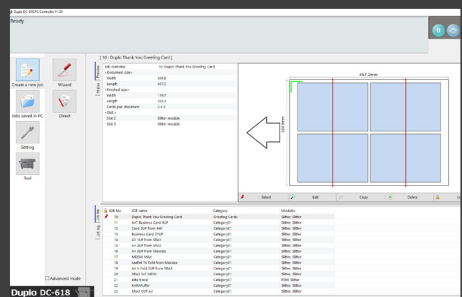


Automated, Precision Finishing for Mid to High Volume Jobs

DC-648 Slitter/Cutter/Creaser

The fully automated DC-648 Slitter/Cutter/Creaser is the latest introduction to Duplo's line of all-in-one finishing solutions. With capabilities to slit, cut, crease, and perforate in one pass, the DC-648 produces full-bleed applications up to 40 sheets per minute.

Eliminate touchpoints and increase efficiency. Finish digital print jobs in faster turnarounds. Ideal for short to mid-production runs, the DC-648 produces a variety of applications such as 24-up business cards, postcards, coupons and tickets, book covers, and much more. Bring precision finishing in-house!



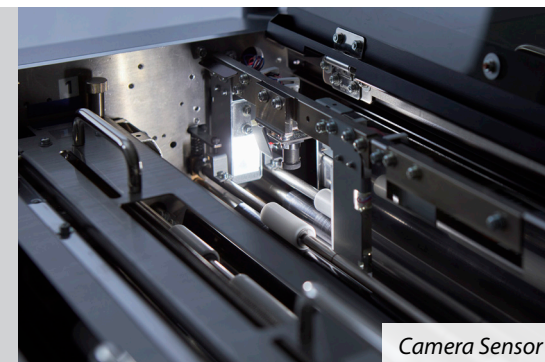
Enhanced PC Controller Software



Air Suction Feed System



DC-648 shown with optional PC and PC arm



Camera Sensor



Modular Finishing



Elevator Card Stacker Option



NO MANUAL SET UPS

Cut job costs by doing away with time-consuming set ups and make-ready times. With the DC-648, you can efficiently operate the system from a PC station (sold separately). The PC Controller software features an enhanced interface and makes it easy to program jobs for multiple-up finishing with up to 8 slits, 30 cuts and 20 creases. Save time by storing virtually an unlimited number of jobs on the hard drive and recall them when needed. Use the job template library and sample PDFs to ensure margins and gutters are set correctly for optimal finishing.

Alternatively, the LCD color touchscreen control panel can be utilized to program and store up to 250 jobs in memory.



AUTOMATED REGISTRATION & CHANGEOVERS

Reduce downtime between jobs by adding a barcode and registration marks. The DC-648 features a new camera sensor that rapidly scans barcodes and performs changeovers on-the-fly without any intervention required. It also quickly reads registration marks to compensate for any image shift in both directions, without interrupting productivity. In addition, the camera sensor can be used to automatically read shrinkage and skew marks, delivering a new level of finishing accuracy.

The DC-648 utilizes Duplo's signature air suction belt feed system, which feeds from the top of the stack to minimize scuffing and reduces static between the sheets. The ultrasonic double feed sensor detects when two or more sheets have been fed with rejects sent to a reject tray. In addition, its soft sponge rollers allow you to finish raised spot UV coated applications with confidence.



PRECISION FINISHING SECOND TO NONE

Automating the finishing process allows your operator to focus on other tasks. Equipped with rotary slitters, a guillotine cutter, and a depth-adjustable creaser – the DC-648 eliminates the need for multiple devices and set ups. Margins and gutters are trimmed horizontally by the slitter and vertically by the cutter then deposited into the waste bin. Only the finished pieces are delivered on the exit tray. The internal conveyor transports all waste into an external bin, making it easy to empty when needed.

Creasing digitally-printed jobs such as greeting cards, book covers, and brochures prior to folding prevents toner cracking and unattractive fold lines. The creaser utilizes male and female matrix channels to create a hinge along the sheet to be folded with ease. Use the adjustable 3-step crease depth or the new width-selectable creaser tool to optimize performance when processing thicker stock up to 400 gsm.



SAVE UP TO 70% IN SETUP TIME WITH FIERY® IMPOSE

Use Fiery Impose to automate job preparation and finishing setup to eliminate manual data entry in Fiery Driven™ print environments. You can automate the imposition and finishing of common jobs, such as business cards, right out-of-the-box using templates from the how-to guides. For high-value custom jobs, you can quickly create an imposition layout with cut, crease, and perforation settings using Fiery Impose, then have the settings automatically communicated to the DC-648.

With no additional programming required on the DC-648, this workflow accelerates production turnaround time while eliminating operator touchpoints and errors.

*Integration will be available in 2022.



INCREASE VERSATILITY WITH PERFORATION MODULES

Extend the versatility of your DC-648 by adding up to three perforating and slitting modules. Combine the Rotary Tool and Cross Perforation modules to produce tickets, coupons, and reply cards with T- or L-shape perforations.

- *Rotary Tool Module performs perforations, micro-perforations, scores and slit-scores across the length of the sheet. Tools are positioned automatically and can perform strike perforations.*
- *Cross Perforation Module performs perforations, micro-perforations and slit-scores across the width of the sheet. Tools are positioned automatically and can perform strike perforations.*
- *Slitting Module adds a set of two slitters to process up to 8 slits per sheet.*

APPLICATIONS

2-up Coupons on 13" x 19" with
T- and L-shape Offset Perforated Cards



finished pieces

1-up Flyer on 12" x 18" with
One Fold and L-shape Perforated Card



fold with IFS in one pass finished pieces



Scan to watch the video

- *All-in-one finishing for mid to high volume jobs*
- *Eliminates touchpoints and reduces downtime*
- *Integrates with Fiery Impose® in Fiery Driven™ environments*
- *Removes margins/gutters and prevents toner cracking*
- *Creates custom T- and L-shape perforations*