



NEOBIND989 – E

Electric interchangeable dies punching machine is suitable for any print room environment that does multiple binding application such as wire, plastic comb, colour coil and various other binding options.

Ranging from corporate office, schools, council, copy shop & small businesses.

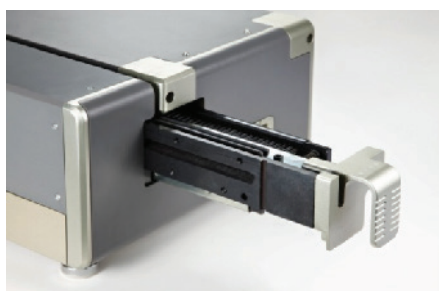
Electric punching capability improve efficiency in the punching process which normally is the main bottleneck in binding of books.

One machine that can punch for different application from using different die set. This result in lower capital investment cost and office space.

- > Punch speed 1 second
- > Punch up to 30 sheets
- > Margin depth adjustment 2 - 6mm
- > Electric punch foot pedal or Auto punch function



Heavy Duty dies slides into side of machine



Various die's available:

- > Comb
 - > 3:1 wire
 - > 2:1 wire
 - > 4:1 spiral
- and more options

Contact us

1800 422 349

ebusiness@smartech-aust.com

www.smartech-aust.com