

SERENE SHEER

ACOUSTIC

Designed to reduce echo, Serene Sheer is an intelligent polyester and metallised fibre weave sheer drapery fabric for the sole purpose of interior noise reverberation reduction.

Serene Sheer has a unique decorative crushed finish and is one of the first acoustic sheer curtain fabrics on the Australian market. Serene Sheer was developed to be an extension of many desired interior specification attributes.

Key Benefits

- ✓ Noise reduction coefficient of 0.5 (with 0 being no sound absorption and 1 being total sound absorption)
- ✓ 3000mm wide continuous fabric
- ✓ 84% polyester with 16% metallised fibre
- ✓ Permanently flame retardant without the use of additional finishes

Top Specifications

Width	3000mm
Weight	151 gr/m2 ± 10%
Roll Size	35m
Noise Reduction	Noise Reduction Coefficient of 0.5 under ISO 10534 Part 4
Fire Classification	AWTA AS1530.2 1993 AWTA AS1530.3 1993
Lightfastness	AWTA test AS 2001.4.21–2006: 6
Finishing Option	Weighted base



Colour Range



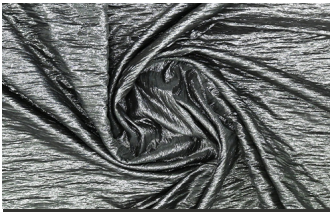
White



Ivory



Grey



Charcoal

Contents:

Colour Range.....	2
Fabric Specifications	3

SERENE SHEER ACOUSTIC

Colour Range



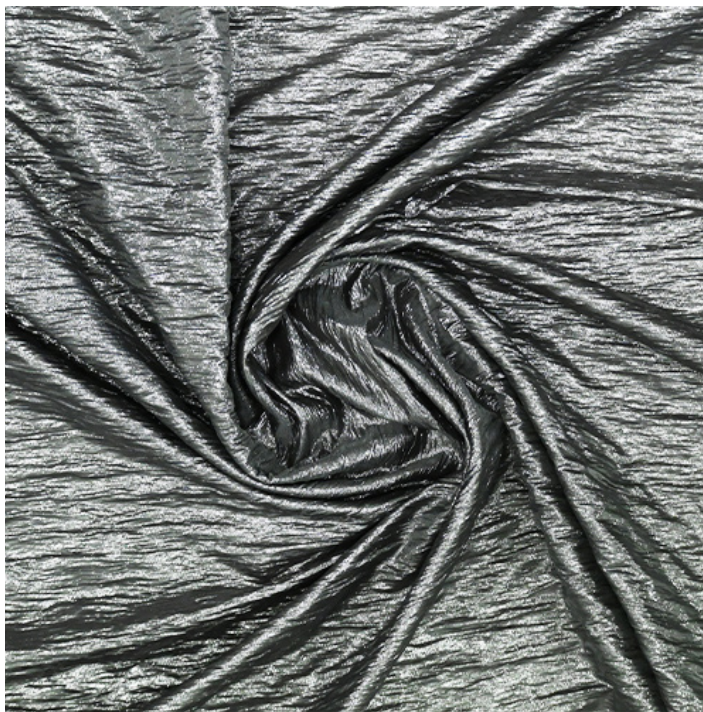
White



Ivory



Grey



Charcoal

SERENE SHEER ACOUSTIC

Fabric Specifications

Fabric Type	Plain
Usage	Curtains / Drapery
Composition	84% Polyester, 16% Metallised Fibre
Width	3000mm
Weight	151 gr/m2 ± 10%
Roll Size	35m
Noise Reduction	Noise Reduction Coefficient of 0.5 under ISO 10534 Part 4 A value of 0 is equal to no sound absorption (i.e. concrete), whereas a value of 1 means complete sound absorption. The higher the coefficient, the higher the amount of sound is absorbed, leaving less sound to transmit into the environment.
Fire Classifications	AWTA AS1530.2 1993, AWTA AS1530.3 1993
Lightfastness	AWTA test AS 2001.4.21–2006: 6 Fabric with a 5+ result offers excellent resistance to the fading effect of light.
Care Instructions	Do not wash. Warm iron. Do not tumble dry. Do not bleach. Dry clean P30. Regular care will minimise need for additional cleaning. Gently vacuum with appropriate attachment. Always exercise caution when spot cleaning. Test clean on non-exposed surface. Remove hooks rings and trims before cleaning. Do not soak, rub, or wring. Drip dry in shade. Possible shrinkage 3%.