

CAMBRIAN

SHEER

Introducing Cambrian, a stunning sheer fabric designed for drapery in commercial settings such as hotels, aged care, and health facilities.

With its fine finish and subtle texture created by a two-tone weave, Cambrian exudes a refined and delicate feel, perfect for creating an intimate ambiance. Available in a range of 12 warm and cool neutral tones, this fabric is made from 100% polyester, ensuring reliable dimensional stability.

Elevate your interior design with Cambrian and achieve an ambiance that exudes elegance and sophistication.

Key Benefits

- ✓ 100% self-weighted polyester
- ✓ Strong 3 year fabric warranty
- ✓ High colourfastness for extended use

Top Specifications

Applications	Drapery, Sheer Curtains, Roman Blinds
Composition	100% Polyester, Self-Weighted
Width	3000mm
Weight	162 gr/m2 ± 10%
Fire Classification	AWTAAS1530.2 1993 AWTAAS1530.3 1993
Fabric Warranty	3 years in accordance with care instructions



Colour Range



Snow



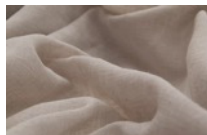
Moonlight



Mist



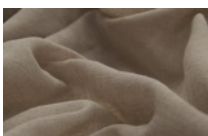
Mushroom



Quartz



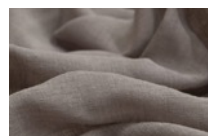
Pebble



Flax



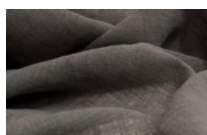
Flint



Sepia



Smoke



Asphalt



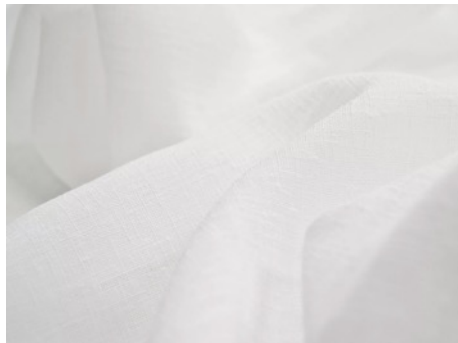
Sable

Contents:

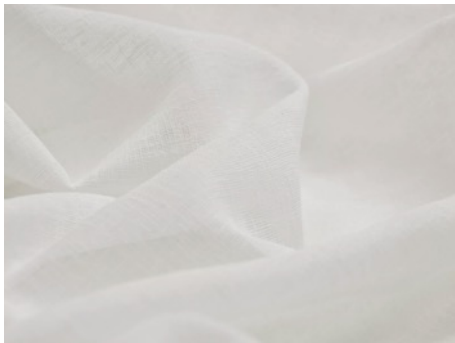
Colour Range	2
Fabric Specifications	3

CAMBRIAN SHEER

Colour Range



Snow



Moonlight



Mist



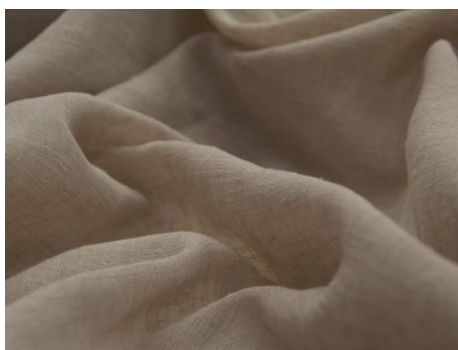
Mushroom



Quartz



Pebble



Flax



Flint



Sepia



Smoke



Asphalt



Sable

CAMBRIAN SHEER

Fabric Specifications

Applications	Drapery, Sheer Curtains, Roman Blinds
Composition	100% Polyester Self Weighted
Width	3000mm
Roll Size	30m
Weight	162 gr/m2 ± 10%
Fire Classifications	AWTA AS1530.2 1993, AWTA AS1530.3 1993
Colourfastness to Light Xenon arc (ISO 105–B02, blue std 6)	> 6
Colourfastness to Rubbing (ISO 105–X12)	Dry 5, Wet 5
Dimension Change – Laundering (%) (ISO 5077/ISO 6330.7BA)	Warp 0.0, Weft 0.0
Dimension Change – Hanging (%) (AS2663.1.B)	Warp 0.0, Weft 0.0
Free and Hydrolysed Formaldehyde (ISO 14184–1:1998)	Not Detectable
Fabric Warranty	3 years in accordance with care instructions
WCAA Care Label	4
Care Instructions	Warm hand wash. Do not rub or wring. Warm iron if required. Do not bleach. Drip dry in shade. Dry cleanable.