

The image features a horizontal banner with a blurred background of tall grass. A central white band contains the text "the granary by HausTalk, Inc." in a mix of script and sans-serif fonts. The word "the" is in a small, dark green script font. "granary" is in a large, flowing, golden-brown script font. "by HausTalk, Inc." is in a smaller, dark green, all-caps sans-serif font. The banner is flanked by dark green horizontal bars.

the
granary
by HausTalk, Inc.

BRIGHT AND
BEAUTIFUL

*Haus Talk invites you
to a bright and beautiful
Biñan.*

Contents

The Granary	4
Entrance Gate	6
Model House	8
Amara 2-Bedroom Floor Plan, GF	10
Amara 2-Bedroom Floor Plan, 2F	12
Photo Gallery	14
Amenities	16
Location	18

Discover a whole new Biñan.

The new address of choice, south of Manila —
a relaxed, gracious and peaceful community
is happening soon.

Haus Talk offers yet again quality and
value-for-money housing in master-planned
settings. It's 'affordable housing' redefined:
you'll get more for the hard-earned peso
you work for.

Visit our model houses at The Granary,
and be inspired.



Artist's Illustration

*Expect pleasant walks
under sunny skies.*

Beyond the splendid entrance a beautiful landscape that matches the charm of Biñan awaits you. A network of roads, lined by trees to adorn every garden and shade walkways.

It's Haus Talk's 'greenest' yet — all in the name of aesthetics and sustainability through structural engineering.

You deserve an experience that enriches mind, body and the soul.



Artist's Illustration

*Explore what suits
your tastes.*

We build homes that delight and excite you
as a homeowner. Homes you would be proud of,
within communities that foster goodwill
and peace of mind.

The Granary is another step in that direction.

Come see our model units. The space is carefully
designed to address your needs.



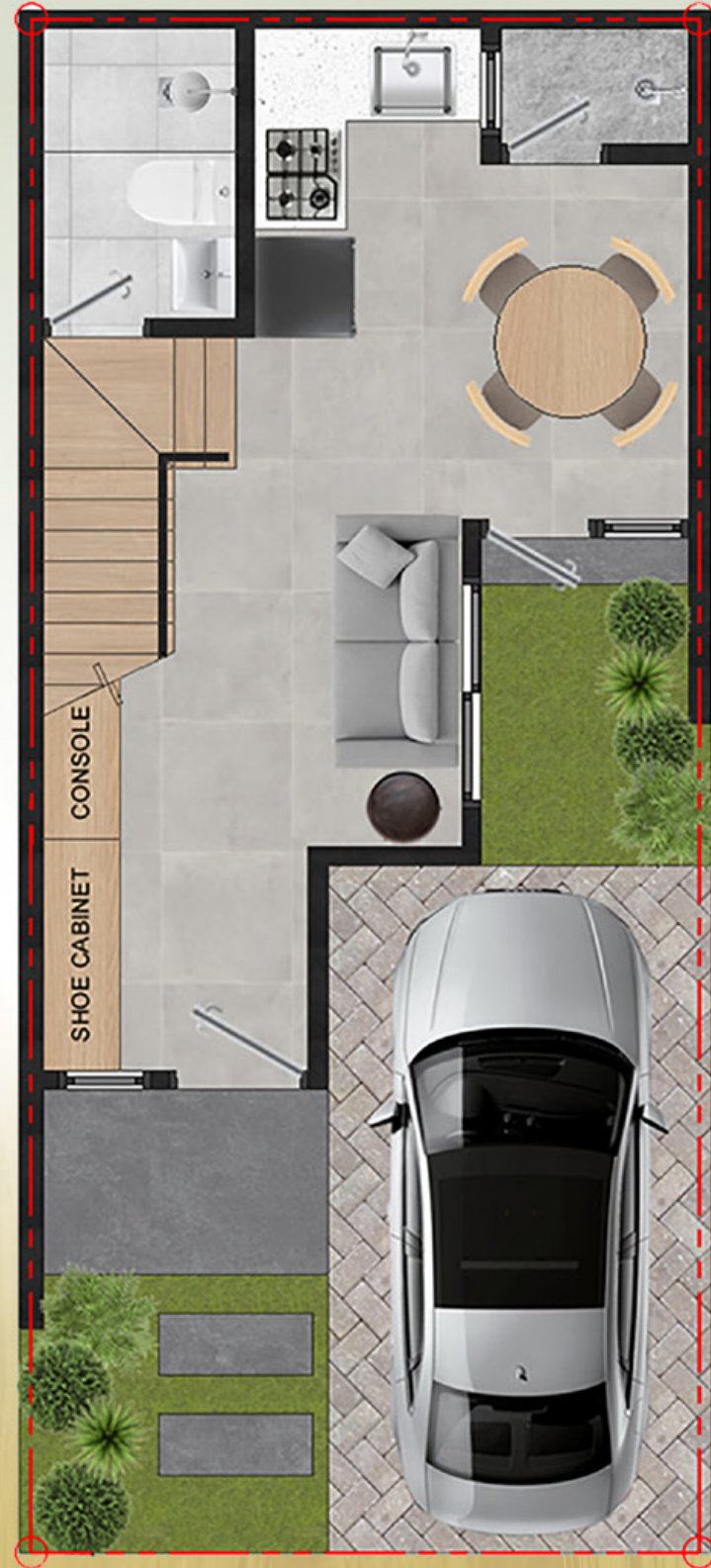
Actual Photo

AMARA

2-BEDROOM | SINGLE-ATTACHED UNIT

Ground Floor Plan

Lot Area: 45 sq.m. | Floor Area: 43 sq.m.

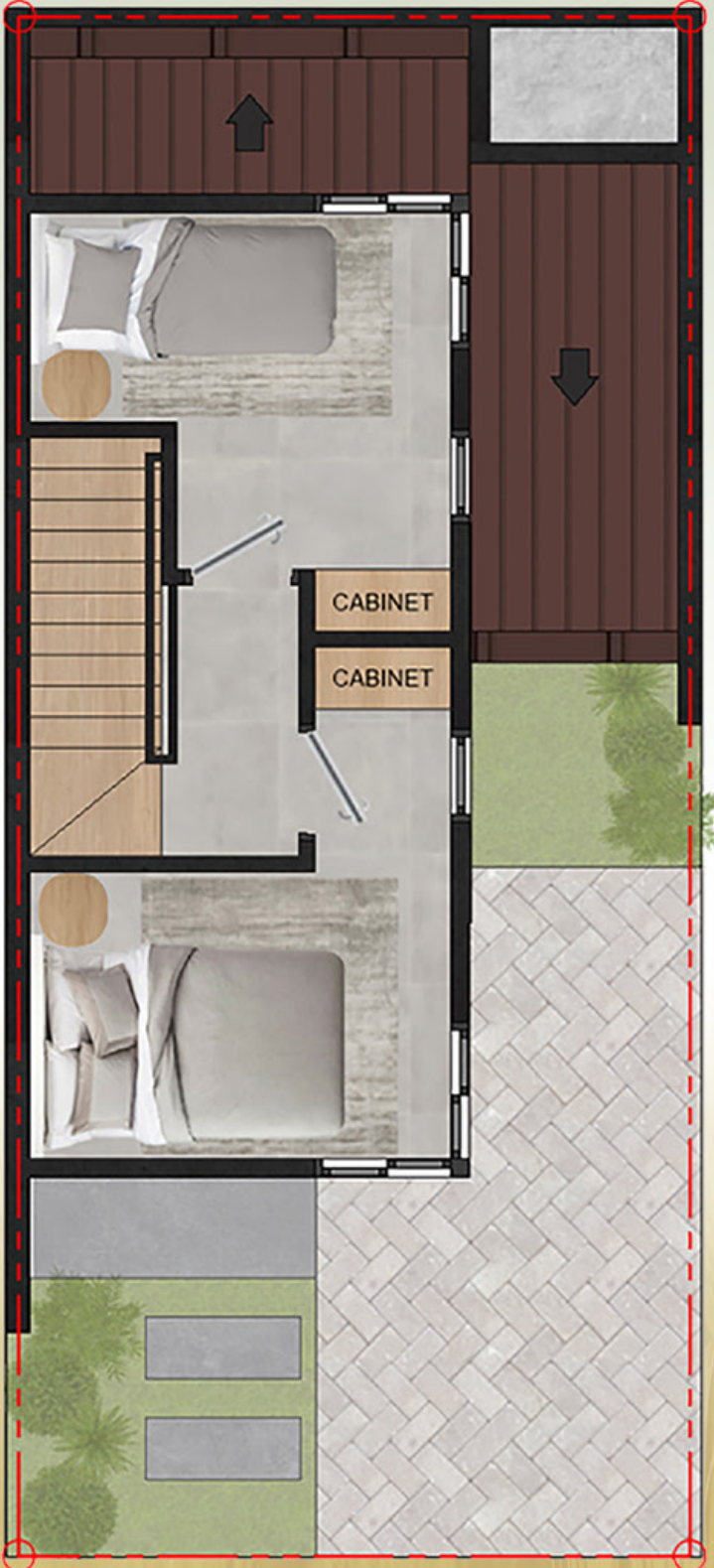


AMARA

2-BEDROOM | SINGLE-ATTACHED UNIT

Second Floor Plan

Lot Area: 45 sq.m. | Floor Area: 43 sq.m.



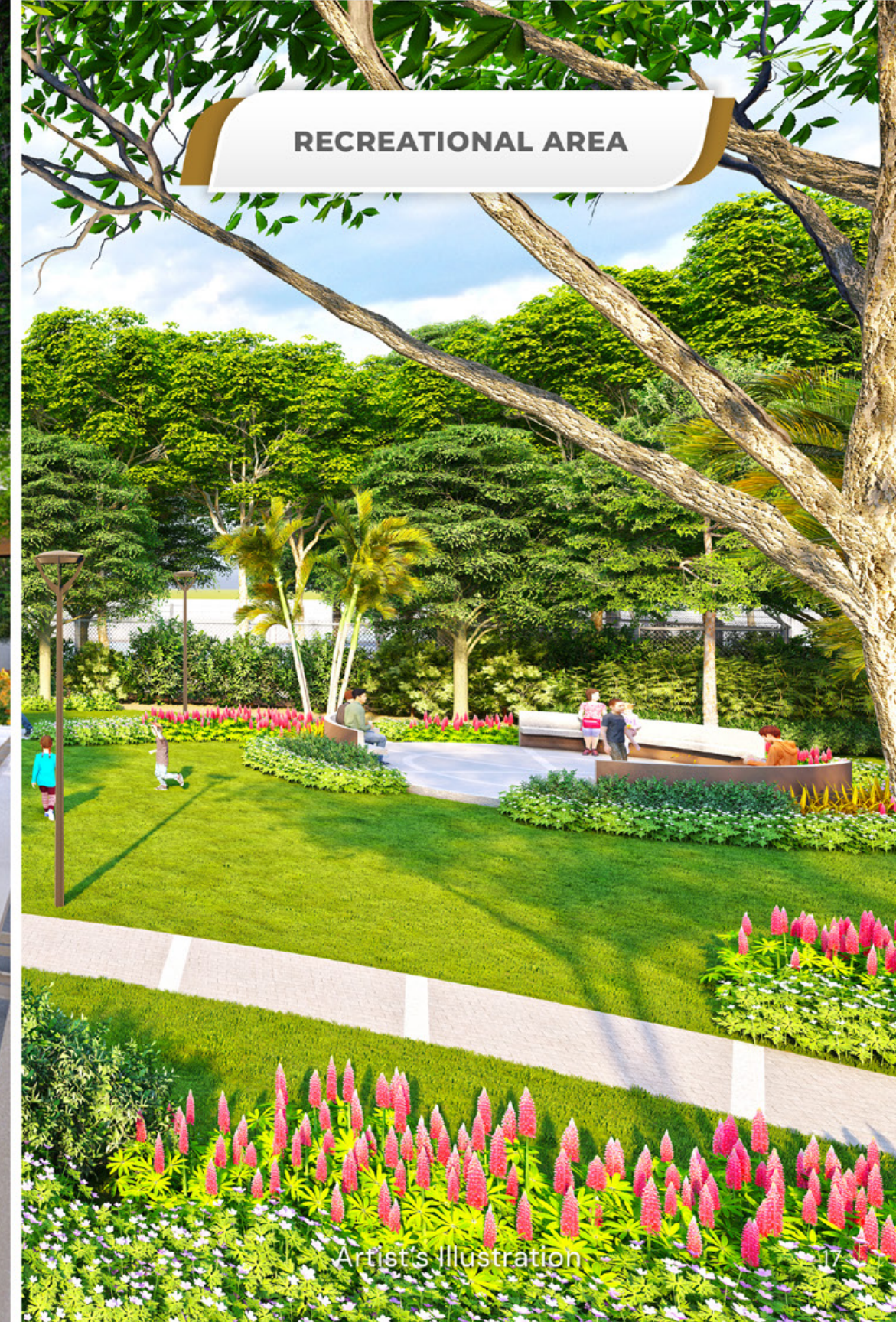
Actual Photo



*Feel good in
a place that
looks great.*

A haven for health enthusiasts.

Recreational areas are earmarked for
leisure and sports activities.



*Have the best
of both worlds.*

It sits on 10 hectares just a few minutes
from the heart of Biñan.

It's close to SLEX, yet feels distant from the
stress of urban living. The joys of provincial life —
the fresh air, the abundance of trees, wide and
open spaces — The Granary brings back.

the
granary
by HausTalk, Inc.





A Project of


HausTalk, Inc.

Where your stories begin.

Unit 701 Orient Square Building, F. Ortigas Road
1605 Pasig, Philippines

📞 **0927-919 6596 / 0939-006 9842**

✉ **sales@haustalk.com.ph**

🌐 **www.haustalk.com.ph**  **officialhaustalkinc**

DHSUD License to Sell No. REGION 4A-TLTS-036