

WEEKLY NEWSLETTER

TYLDEN PRIMARY SCHOOL

11 Clowes Street Tylden Ph: 5424 8244

Email: tylden.ps@education.vic.gov.au www.tyldenps.vic.edu.au



Term 4 Week 5

Friday 3rd Nov 2023

IMPORTANT DATES

NOVEMBER

Monday 6th

Curriculum Day

No students at school

Tuesday 7th

Melbourne Cup Public Holiday

Tuesday 14th

2024 Prep Information 7pm

Friday 17th

P-2 Excursion Melbourne Zoo
School Review day 2

Tuesday 21, 28 Nov & Tues

4, 11 Dec

2024 Prep transition visits
1:30—3:30pm

Monday 27, Wed 29

Swimming program

DECEMBER

Fri 1, Mon 4, Wed 6, Fri 8

Swimming program

Thursday 7th

House swimming Sports
Gr 3—6 only

Friday 8th

Family Fun Night

Thursday 14th

Xmas Carols - Visit to nursing
homes

Friday 15th

Gr6 Big day out

Monday 18th

Grade 6 Graduation 7:30pm

Tuesday 19th

Last day of term 4.
3.30pm finish

Wednesday 20th

Curriculum Day



Willow

Frida

Principal's Message

Dear parents and carers

The date for the second day of our review has been set and it is Friday 17th November. On this day, the review panel will verify the school's performance over the past 4 years, discuss what was observed by the panel members in their classroom visits and consider the feedback from the forums and interviews that took place on day 1. The panel will then set the goals and targets for the strategic plan that will guide the school for the next 4 years.

The school swimming program is approaching at the end of the month. The focus is on improving students' basic swimming skills and reminding them about safe behaviour when around water. Please make sure you return the form that gives your child's current skill level as soon as you can. These forms help the aquatic centre staff allocate students into the correct group for the lessons. Permission notices and costing will be sent home shortly.

The press is currently reporting a large increase in COVID infections in the community. There have been a number of cases of COVID reported from school families in the past week, with both parents and students

affected. Please keep children at home if they are unwell, particularly if they are showing cold/flu symptoms, to reduce the spread of the infection they are carrying. The school still has a good supply of Rapid Antigen Tests (RATs). If you would like to have some sent home please notify the office or you can drop in to collect them.

A reminder that all students have a long weekend from today. Next Monday 6th November is a curriculum day and no students are required at school. Tuesday 7th November is the Melbourne Cup public holiday.

I hope that your family gets a chance to relax over this mid term break and prepare for a busy time between now and the end of the year.

Have a lovely long weekend!

Lee MacDonald

Principal

leeanne.macdonald@education.vic.gov.au

STUDENTS OF THE WEEK



Pictured:
L-R Back Lincoln,
Raphael, Gypsy Pearl
& Madison
Front: Tia & Willie

STUDENTS OF THE WEEK

Gypsy Pearl— For pushing your personal best on the Grade 3 camp. Your positive attitude showed you that you can do anything if you want to! It was great to watch you grow!! Well done.

Tia —For doing your personal best. You have been trying so hard with your reading and writing. Keep up the great work.

Raphael— For being an amazing sport during the House Athletics day! You did your personal best in every event and were always supportive of your friends. Well done!

Willie—for showing the school value of creativity. Willie uses his fantastic imagination to solve problems and to think of different ways to do things.

Madison—For displaying such a great attitude towards sports day. You put your best into every event and had some great results.

Lincoln—For an outstanding effort during Sports Day. Not only did you give your best in each event, but you are always so supportive of your class mates. Keep it up!

NEW SCHOOL COUNSELLOR

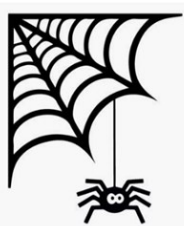
Good news for our school is that there will be a new school counsellor available for consultation in November. Ms Margaret Bailey, an experienced counsellor who currently works at Streatfeild Psychology, will extend her practice to our school starting on Friday 10th November. Please contact the office for more information and referral documents.

LOST PROPERTY NOT LABELLED

The Lost Property box is overflowing with items of clothing and personal items that are not labelled with the owner's name.

Please check everything that your child brings to school and label each item with your child's name. This includes hats, jumpers, gloves, sports equipment, coats and jackets, containers and lids, lunch boxes and drink bottles.

THIS WEEK IN OUT OF HOURS SCHOOL CARE



Hey Team!

We've had an especially spooky week in OSHC this week.

Monday and Tuesday were spent making Halloween decorations and costumes. Julian and Gwen made some awesome masks. Julian based his masks off a video game he likes to play and Gwen got super creative and made her own design up.

On Wednesday, things got really spooky and the OSHC teachers fed the students hot dogs that looks suspiciously like fingers and punch that looked like it had eyeballs in it!

We all dressed up in whacky costumes and went trick or treating around the school. We hope that you all enjoyed it, because we definitely did!

To carry on the spooky theme, we did some Halloween cooking on Wednesday. Some people decorated mini cupcakes and another group baked some scary biscuits. Have a great weekend everyone and we will see you next week. Hannah ☺



WEEKLY MENU

Breakfast A selection of healthy cereals, yogurts, toasts and spreads are available for children to choose, according to their taste.

Afternoons A selection of fruit, fresh salad vegetables, cold meats, spreads, wraps & bread are available each afternoon in buffet style.

Daily Fresh fruit, vegetables, milk and water are always available throughout each session.

GRADE 3 CAMP TO PGL CAMPASPE DOWNS



School preparations for the bushfire season

Each year, to prepare for bushfires and grassfires, schools and early childhood services complete a range of activities.

The Department of Education runs an annual fire risk assessment of schools and early childhood services. They are allocated a category of risk (categories 0 to 4) and are published on the Bushfire At-Risk Register (BARR).

All schools and early childhood services listed on the BARR and Category 4 list will also close when a Catastrophic fire danger rating day is forecast in their fire weather district.

When the Bureau of Meteorology provides public fire danger rating forecasts or fire weather warnings, they use fire weather district areas. In Victoria, there are 9 fire weather districts, which are based on Local Government Area boundaries. Our school is in the **Central** fire weather district.

As part of preparing our school for the fire season, we have updated and completed our Emergency Management Plan and completed works that will prepare our school site for the threat of fire.

What does this mean for our school?

Our school has been identified as being at risk of bushfire or grassfire and is a Category 3 school.

Our school will close on a day forecasted as Catastrophic fire danger rating in the **Central fire district.**

What is the department's policy?

The department's [Bushfire and Grassfire Preparedness Policy](#) requires all schools and early childhood services on the BARR and the Category 4 list to close when a Catastrophic fire danger rating day is forecast in their fire weather district. All school bus routes which travel in or through a district with Catastrophic fire danger must also be cancelled.

When will our school be closed due to Catastrophic fire danger?

Our school will close on a day forecasted as **Catastrophic fire danger rating in the Central fire district**.

Closure of the school due to a forecast Catastrophic day will be confirmed on the day prior and we will provide you with this advice before the end of the school day. Any information regarding potential or confirmed Catastrophic fire danger days will be communicated to you by the XUNO app.

Once confirmed, the decision to close will not change, even if the weather forecast changes. This is to avoid confusion and help your family plan alternative care arrangements for your child. It is also important to be aware that:

No one will be on site on days where the school is closed due to a forecast Catastrophic day.

Out-of-school-hours care will also be cancelled on these days.

All bus routes that travel through the Catastrophic area will be cancelled.

School camps and excursions will be cancelled if a Catastrophic fire danger rating day is forecast for fire weather district in which the camp is located, or if the travel involves passing through areas that have Catastrophic fire danger.

Families are encouraged to enact their Bushfire Survival Plan on Catastrophic fire danger rating days. **On such days, children should never be left at home alone or in the care of older children.**

For those of us living in a bushfire prone area, the Country Fire Authority (CFA) advises that when Catastrophic days are forecast, the safest option is to leave the night before or early on the morning of the Catastrophic day.

What can families and the school community do to help us prepare?

Ensure we have your current contact details, including your mobile phone numbers.

Keep in touch with us by reading our newsletters, checking the XUNO app, by talking to your child's teacher or any other member of the teaching staff about our emergency management plan.

Make sure your family's bushfire survival plan is up-to-date and includes alternative care arrangements in the event that our school is closed due to a Catastrophic fire danger. Further information can be found on the [CFA's website](#).

You are advised to enact your family's bushfire survival plan if your own triggers are met. Our school community may be spread out across many areas and some families may be at higher risk than others. Your family's safety is critical, so please let us know if you are enacting your bushfire survival plan and if your children will be absent on these days.

If your child is old enough, talk to [them about bushfires](#) and your family's bushfire survival plan.

You can find more information on emergencies, warnings and preparedness actions here: VicEmergency app – that can be downloaded on your android and iOS mobile devices VicEmergency Hotline (1800 226 226) Website <https://emergency.vic.gov.au> Facebook (<https://www.facebook.com/vicemergency/>) Twitter (<https://twitter.com/vicemergency>) ABC local radio, Sky News and other emergency broadcasters



COMMUNITY NEWS

*We respectfully acknowledge the Traditional Owners of country throughout Victoria
and pay respect to the ongoing living cultures of First Peoples.*

Our School Values are: Integrity—Personal Best—Respect—Friendliness—Resilience—Teamwork—Creativity

