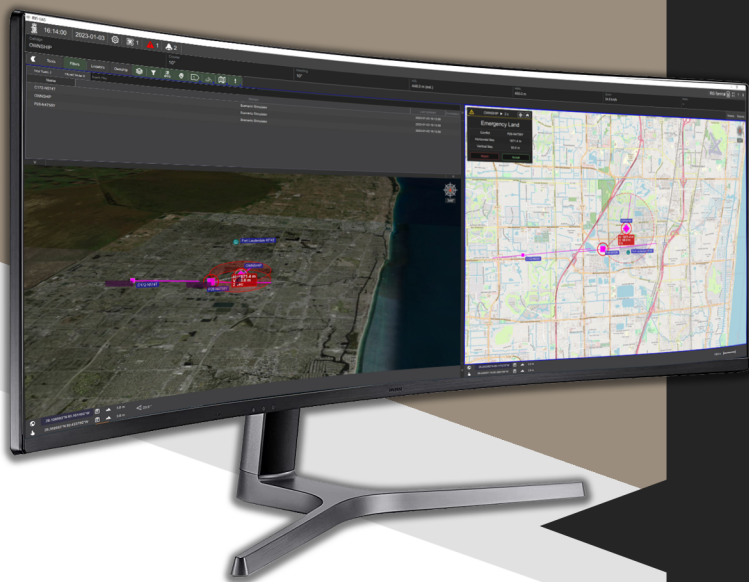


IRIS Terminal



IRIS Terminal is the industry-leading airspace visualization tool chosen by UAS service providers and organizations to provide real-time situational awareness for their operators.

IRIS Terminal provides a single visualization screen, no matter how many data inputs are required to manage your airspace. **Robust** enough to be mission-critical, **scalable** enough to grow with your needs, and **customizable** enough to adapt to the needs of your flight operations.

Built on the backbone of KG TerraLens, we have over 3 decades of experience in defense and air traffic control airspace management visualization, providing our enterprise clients with a tested and future-proof investment into their airspace management needs.

COGNITIVE LOAD MANAGEMENT

Track Correlation

With every sensor input comes one aircraft track. Ownship, cooperative, unmanned, non-cooperative...and multiple duplicate tracks from the same aircraft can overload the user.

IRIS Terminal features our proprietary 'Track Correlator' service, which analyses multiple tracks from different types of sensors, interprets them, and correlates them into one single on-screen track... allowing the user to focus on the job at hand.

Airspace Transparency

Multiple sensors should not mean multiple UI's. More screens don't mean better decisions. IRIS Terminal provides true airspace transparency by removing the multiple-screen paradigm and keeping one clean and tidy UI to display all sensor outputs. Less is more.

Customized Workspace

IRIS Terminals' customizable UI allows **you** to display **your** view as **you** want it. Map layers, 2D airspace, 3D airspace, conflict prediction, track listings, sensor health, and many more are arranged based on your preferences and toggled on or off as needed by the user, for that mission.

MAKE CRITICAL DECISIONS WITH CONFIDENCE

When managing airspaces, it's essential to have just the right amount of information at the operators' fingertips, at the right time. Not all UAS airspace needs or conditions are the same, and hence operators chose specific DAA sensors, feeds, and inputs that adapt to their operating needs, terrain, and use case.

IRIS Terminal integrates these into one single UI to seamlessly display user-defined actionable data, as fast as the sensor can deliver it. Examples of frequently integrated inputs are:

- ADSB Sensors
- EO imaging sensors
- AIS Sensors
- Ownship telemetry link
- Sensor health monitors
- Radar
- Acoustic sensors
- ADSB feeds
- Weather feeds
- And more...

PUSH IT TO THE FIELD

Allow field operations to experience the power of IRIS Terminal on their LTE-connected mobile device. IRIS Webviewer pushes our IRIS Terminal airspace transparency out to smartphones or tablets of your field-based teams via a web portal, ensuring that they have as much actionable data as needed to safely and efficiently perform their duties.



www.kongsberggeospatial.com
info@kongsberggeospatial.com
Enabling Mission Critical Decisions

