

PEDITRED SA G7 BY CONSTRUCTION SPECIALTIES WITH RECESSED TAPERED ANGLE FRAME

DESCRIPTION: PEDITRED SA G7 ALUMINUM CONNECTOR, ALUMINUM RAIL ROLL-UP MAT WITH RECESSED TAPERED ANGLE FRAME



13220 Willow Lane Circle
Burnsville, MN 55337
www.ronick.com 1-877-242-8821

*INSERT TYPE:
*INSERT COLOR:

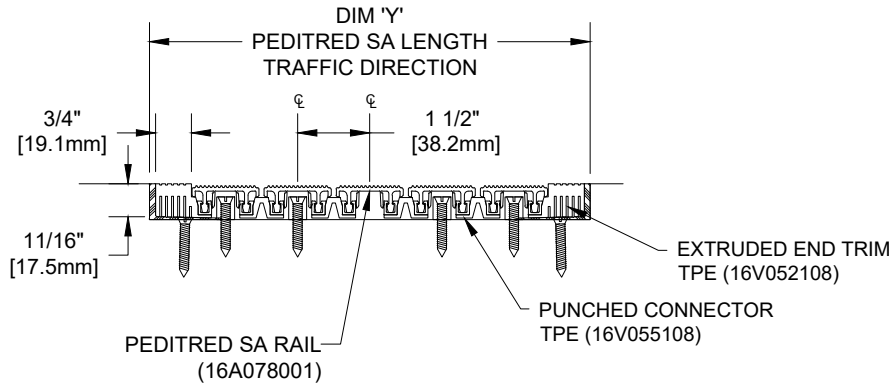
NOTE: PRODUCTS CONTAINED WITHIN DRAWINGS ARE MODELS OF CONSTRUCTION SPECIALTIES ENTRANCE FLOORING PRODUCTS



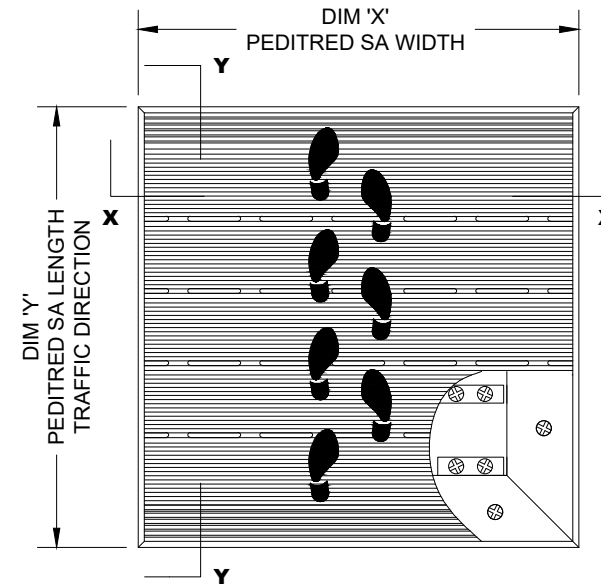
PEDITRED SA
SERRATED ALUMINUM
G7
16A078001

* OPTIONS AVAILABLE AT RONICK@RONICK.COM

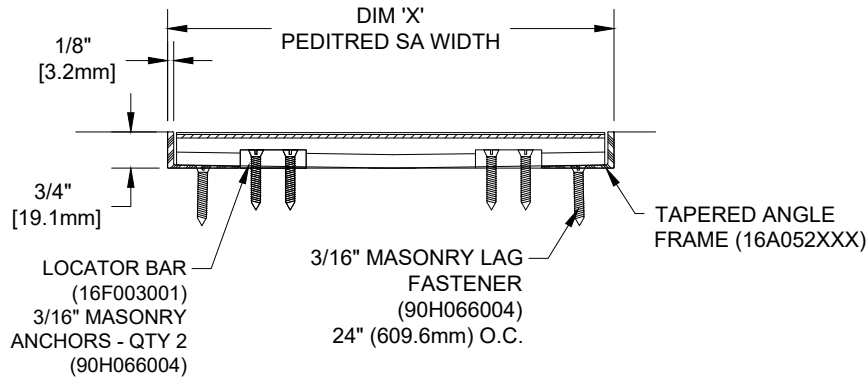
SECTION Y-Y



PLAN VIEW



SECTION X-X



NOTES:

* SCALE: NTS

- * ALL SURFACES IN CONTACT WITH MASONRY ARE TO RECEIVE A COAT OF ZINC CHROMATE PRIMER
- * PLEASE VERIFY TRAFFIC DIRECTION
- * PEDITRED SA G7 SHALL BE ABLE TO SUPPORT A 1000 LB. ROLLING LOAD. LARGER LOADING MAY BE ACCOMODATED.
- * MAX. SINGLE GRID SIZE NOT TO EXCESS 12'-0" (3.66M) IN WIDTH (DIM "A") OR 100 SQUARE FEET

QTY	LOCATION	DIM "X" (WIDTH)	DIM "Y" (LENGTH)	FINISH	NOTES	PROJECT:
						CONTRACTOR:
						DRAWN BY:
						DATE:
						SHEET: