

PEDITRED SA G7 BY CONSTRUCTION SPECIALTIES ENTRANCE FLOORING PRODUCTS

DESCRIPTION: PEDITRED SA G7 ALUMINUM CONNECTOR, ALUMINUM RAIL ROLL-UP MAT WITH NO FRAME



13220 Willow Lane Circle
Burnsville, MN 55337
www.ronick.com 1-877-242-8821

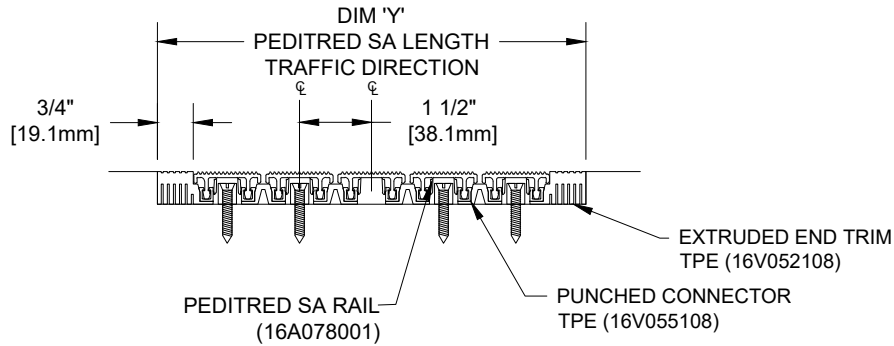
*INSERT TYPE:
*INSERT COLOR:

NOTE: PRODUCTS CONTAINED WITHIN DRAWINGS ARE MODELS OF CONSTRUCTION SPECIALTIES ENTRANCE FLOORING PRODUCTS

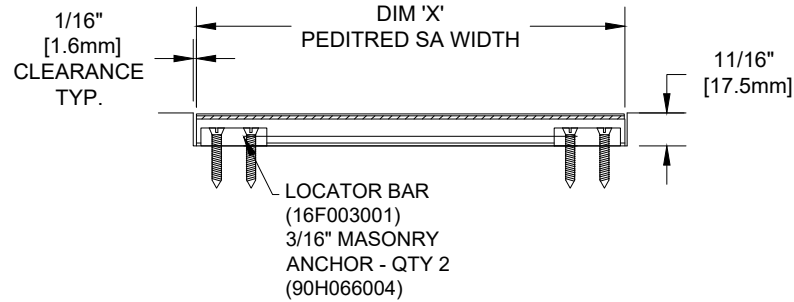


* OPTIONS AVAILBLE AT RONICK@RONICK.COM

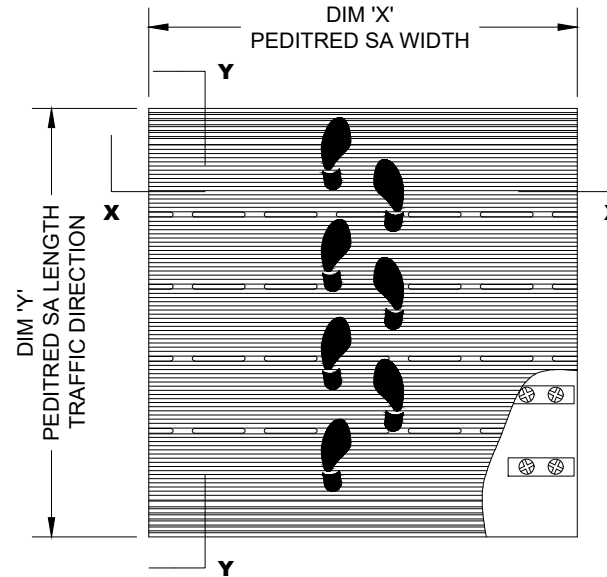
SECTION Y-Y



SECTION X-X



PLAN VIEW



NOTES:

* SCALE: NTS

- * ALL SURFACES IN CONTACT WITH MASONRY ARE TO RECEIVE A COAT OF ZINC CHROMATE PRIMER
- * PLEASE VERIFY TRAFFIC DIRECTION
- * PEDITRED SA G7 SHALL BE ABLE TO SUPPORT A 1000 LB. ROLLING LOAD. LARGER LOADING MAY BE ACCOMODATED.
- * MAX. SINGLE GRID SIZE NOT TO EXCESS 12'-0" (3.66M) IN WIDTH (DIM "A") OR 100 SQUARE FEET

QTY	LOCATION	DIM "X" (WIDTH)	DIM "Y" (LENGTH)	FINISH	NOTES	PROJECT:	
						CONTRACTOR:	
						DRAWN BY:	
						DATE:	SHEET: