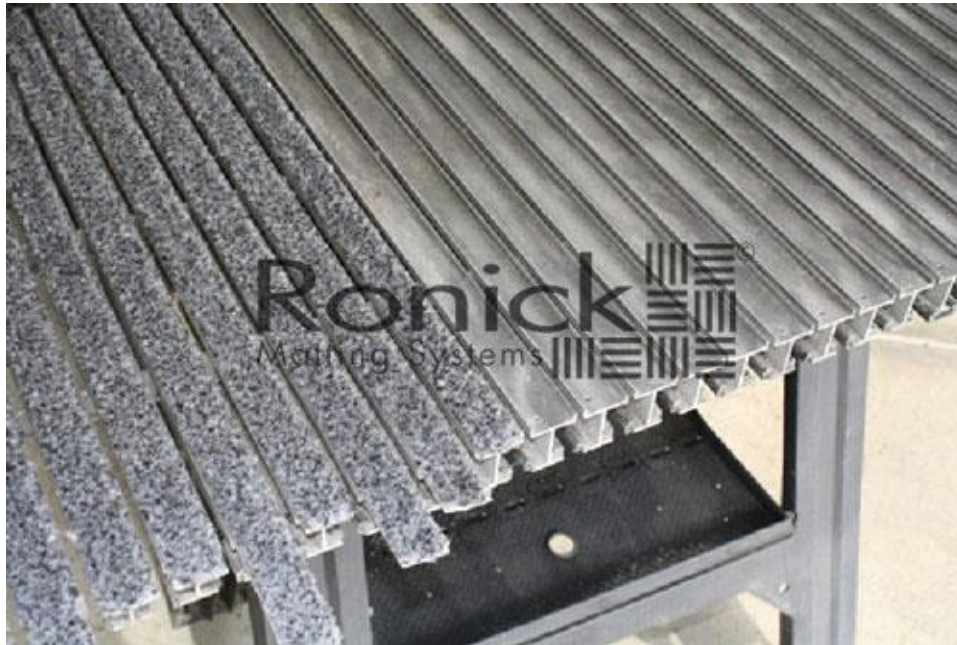


Ronick Entrance Foot Grille Carpet Strip Replacement Instructions

1



Tools Needed: Hammer & Chisel

Flathead Screw Drivers

Utility Knife

Rivet Gun

Optional: Drill or Grinder

Propane Torch

Note: Installation times may vary depending upon condition of your mat.



Traffic and weather conditions will determine the longevity of your carpet inserts. Look at the heavy ice melt and dirt build-up forming a "cow path" in the carpet fibers.



Begin by lifting up your [Pedigrid](#) and moving them to your work area.



Existing carpet inserts are fastened down by rivets. To break rivets use hammer and chisel.



Remove [Pedigree](#) inserts by pulling the strips. In rare cases, inserts may be brittle and break as you pull.



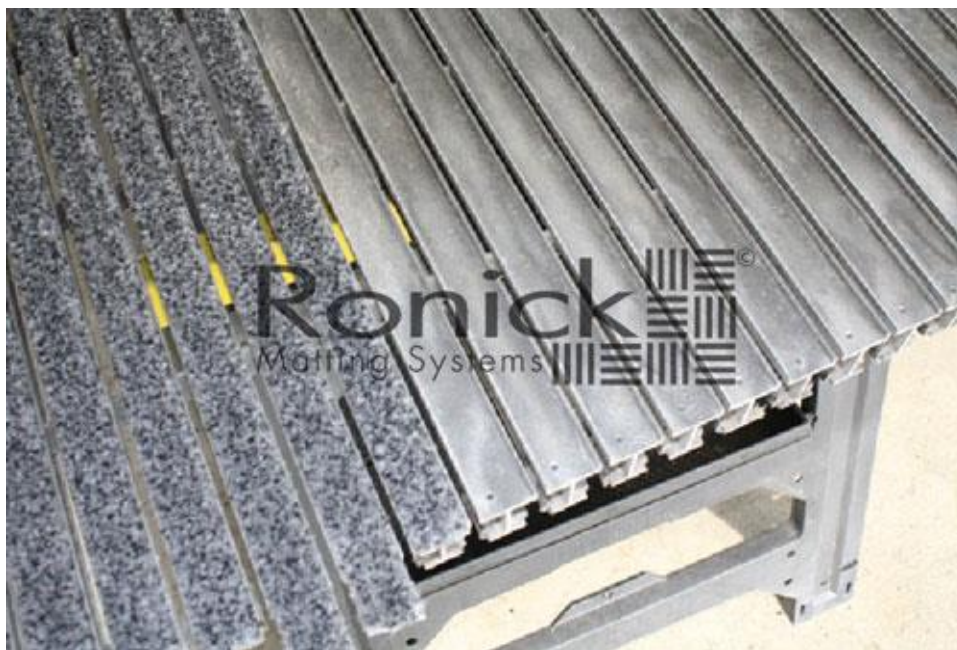
After you remove carpet inserts, clear the rails with a chisel to remove accumulated dirt.



Dirt also builds up between rails - clean this area out in order for debris to fall into recess.



Another way to clean your [Pedigrid](#) - use a steel wire brush on the end of a drill or a grinder.



You are now ready to place new carpet insert material into the cleaned rails. If rail openings are tight, two people may be required to pull insert material through rail.



Flip your [Pedigrid](#) and drill a hole through the carpet material for placement of a rivet head.



From the top of your [Pedigrid](#), rivet the ends of your new inserts to secure strips.



Cut off excess material on the ends with a utility knife.



OPTIONAL:

For a professional look, use a propane torch to melt the edges of the carpet insert material to prevent fraying.



When reinstalling your [Pedigrid](#), if grid opening is tight, use a flathead screw driver to wedge around the perimeter.



Your [Pedigrid](#) will perform and look like new at a fraction of the cost of purchasing new grids.