

Ronick Entrance Remodel

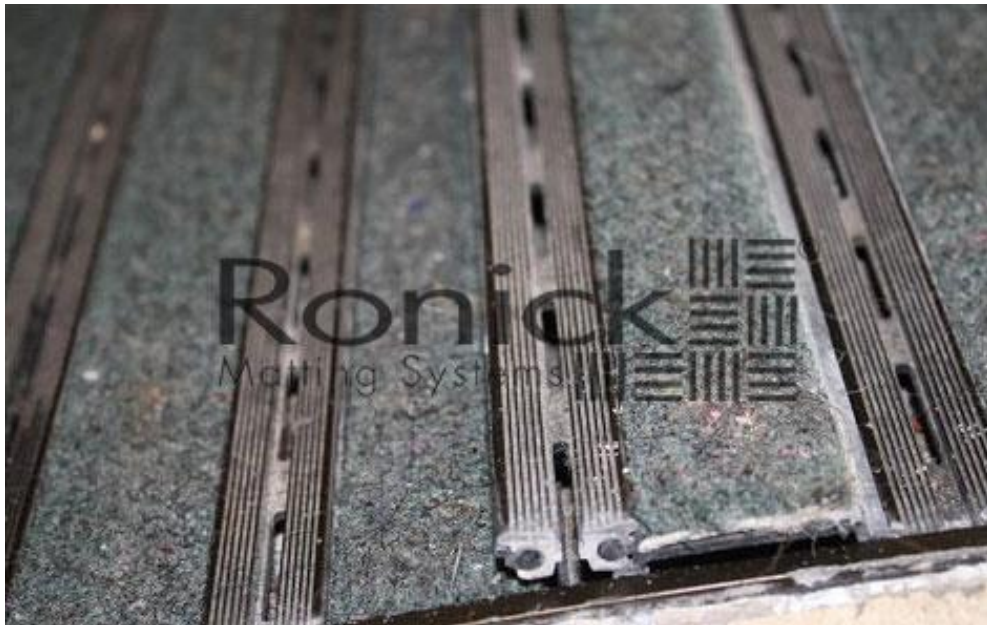
1



This entrance way is located in the front of a hotel by the Mall of America in Bloomington, MN.



High Pedestrian traffic as well as ice melt and sand weakened the tile causing it to crack.



The [Pedimat M1](#) also has been damaged beyond repair (vinyl rails have been broken)



Remodeling begins by removing the tiles around the parameter.



Once the tiles are removed, clean up the existing surface.



The existing thin set/mortar needs to be removed. This can be done with a bead blaster or a grinder.



After removing the thin set/mortar clean the area and use a self leveling latex screed to create a level concrete surface. Apply two thin coats of anti corrosive sealant to protect the concrete from ice melt.



A heavier duty [PediTred LP G3](#) is installed wall to wall which supports 750lbs/wheel load.