

# Aluminum Mat Cleaning

# 1

## Tools Needed



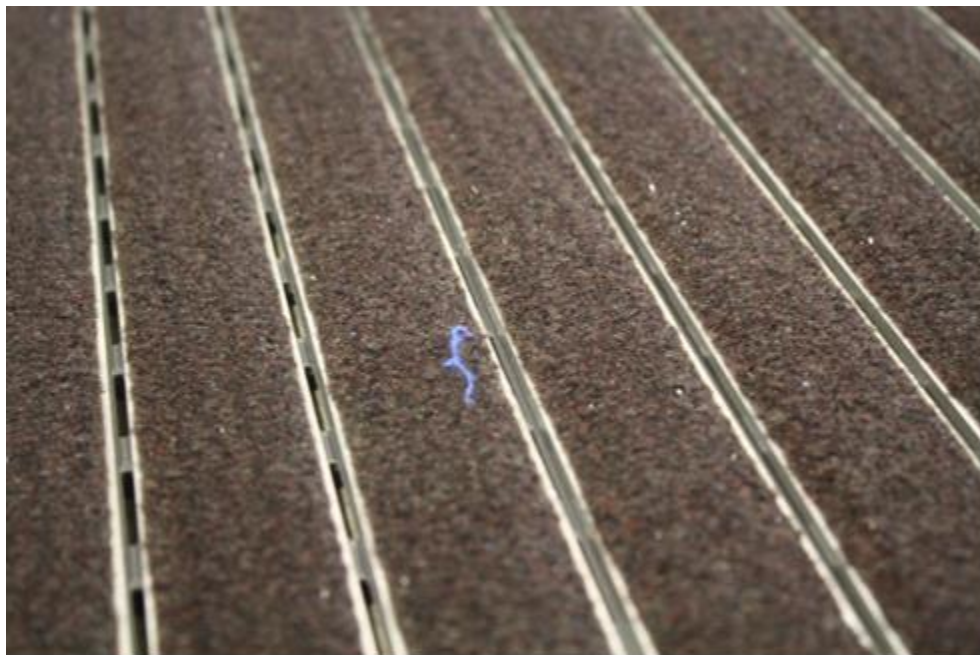
*\*Optional*



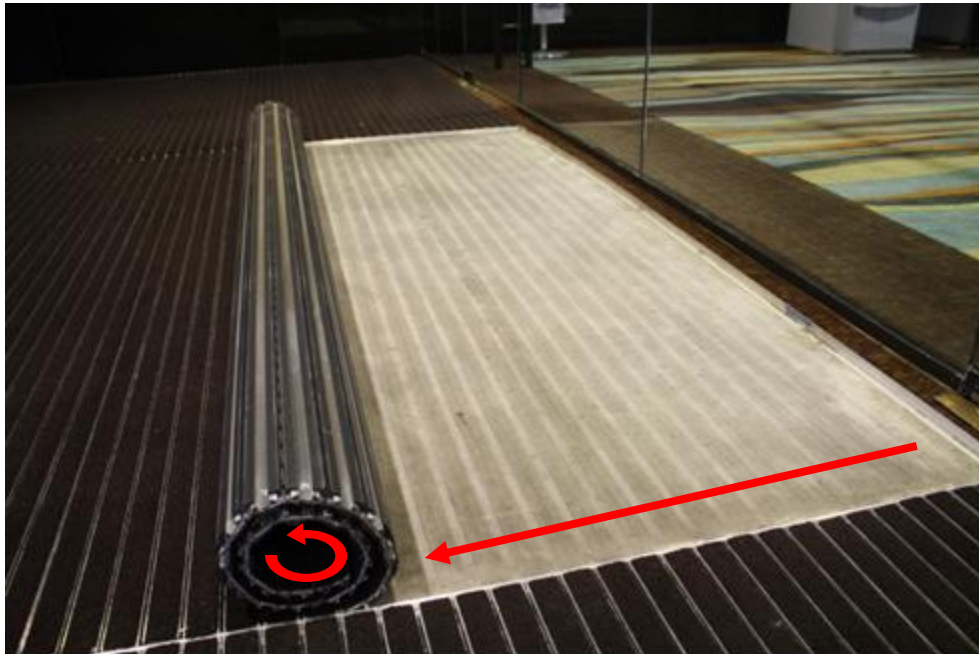
Maintenance on a regular basis is important to keep the mats effective at trapping dirt and moisture.



Mat should be vacuumed daily to remove dirt and surface debris.



Small threads may collect on the surface of the mat. These are easily removed using a steel wire brush.

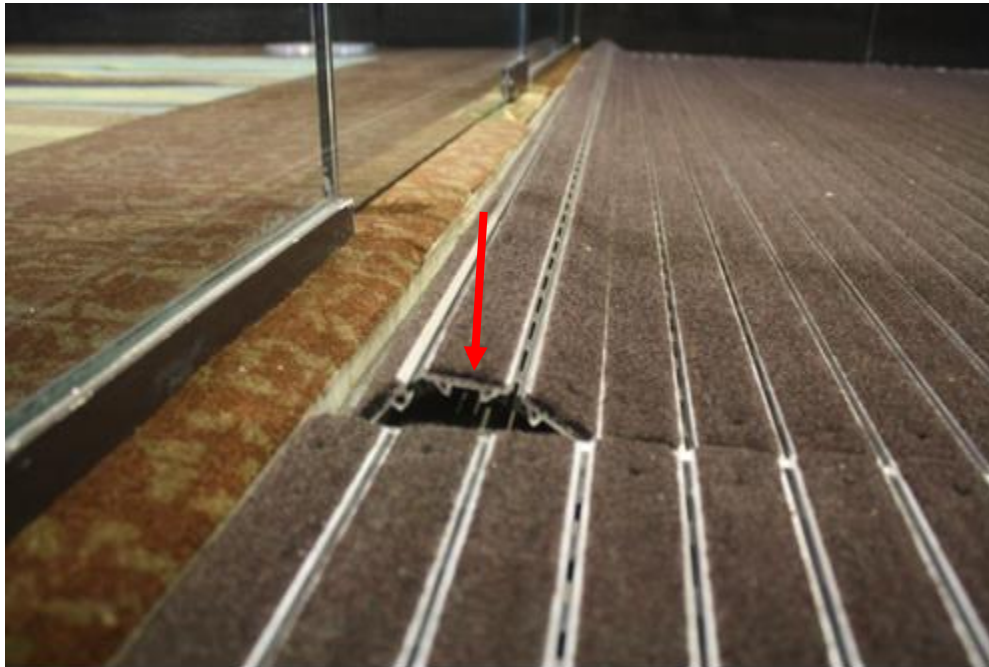


The metal edges of the mat are sharp, and gloves should be worn when handling. Wedge a flat head screwdriver between sections to lift up mat sections and roll back. Use a broom and a dust pan to sweep up and remove dirt and debris from the recess.



After cleaning recess, carefully roll mat back.

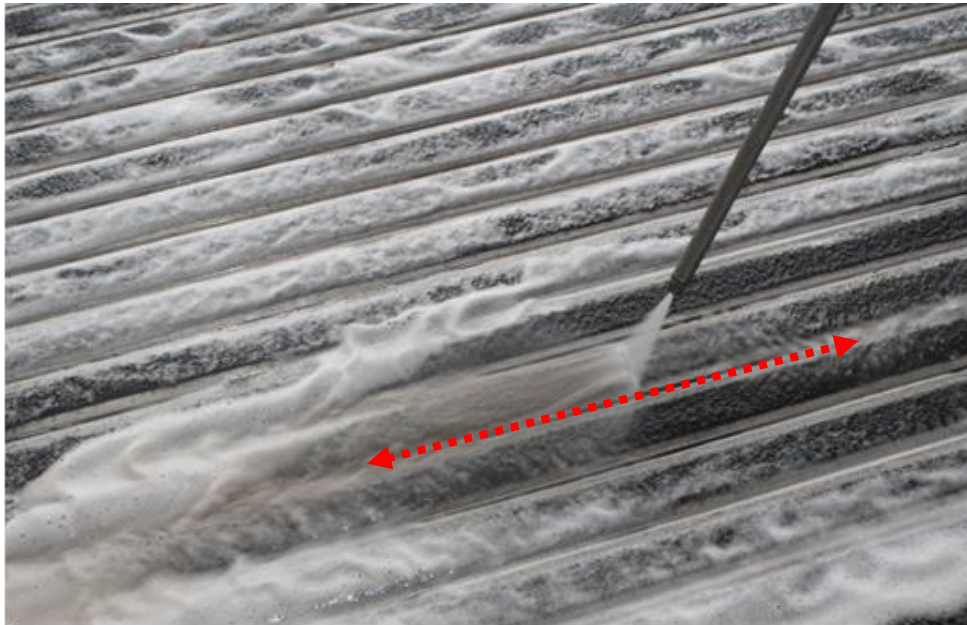




The mats have vinyl connectors that expand, keeping the mat firmly in place. Curl the end rail of the mat as shown and compress the mat by applying pressure to the raised rails.



**Heavier Duty Cleaning:** We recommend using a pressure washer when heavy duty cleaning. Remove the mat sections from the recess. (A mild detergent can be pre-sprayed on mats.) NOTE: If your facility doesn't have a pressure washer on site, mats can be taken to a self-serve car wash for cleaning.



Focus the pressure washer nozzle on one carpet insert at a time, keeping nozzle approximately 2-3 inches from insert. Depending on traffic patterns, some areas will be more heavily soiled than others and require more attention. Keep spraying until water comes out clean.



After the mats are cleaned and rolled up, they should be angled for allowing remaining water to drain. Once most of the water has been drained, they can be reinstalled. All components of the mats are anti-mildew and can be re-installed when partially wet. \*\*\*Carpet inserts can be replaced if they become worn.