

**CASTOHN**<sup>®</sup>  
LARGE PAVER SERIES



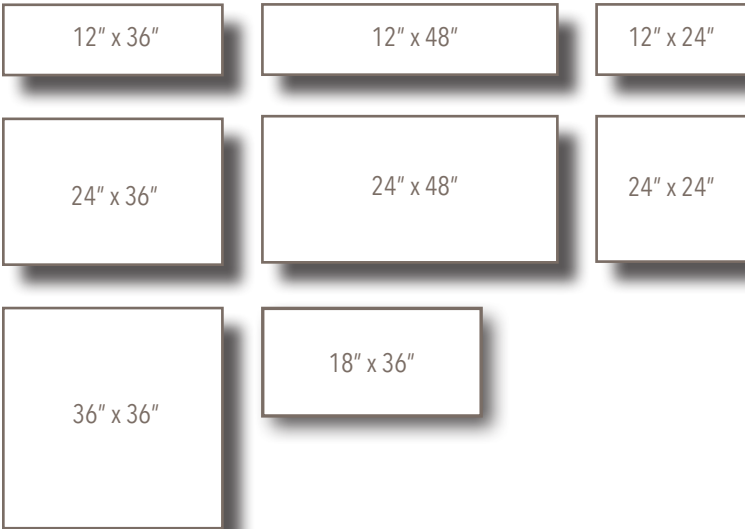
WEST REGION

OLYMPIC PAVER  
COLLECTION



**CASTOHN**<sup>®</sup> ORIGINAL

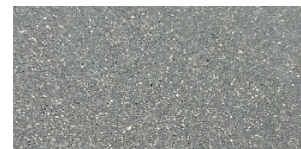
For additional product information, please visit [castohn.com](http://castohn.com)



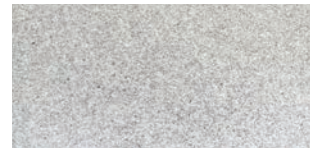
### Product Data

- 12" x 24" x 2-1/2" - 2 square feet - 61 pounds
- 12" x 36" x 2-1/2" - 3 square feet - 92 pounds
- 12" x 48" x 2-1/2" - 4 square feet - 122 pounds
- 18" X 36" X 2-1/2" - 4.5 square feet - 132 pounds
- 24" x 24" x 2-1/2" - 4 square feet - 122 pounds
- 24" x 36" x 2-1/2" - 6 square feet - 184 pounds
- 24" x 48" x 2-1/2" - 8 square feet - 245 pounds
- 36" x 36" x 2-1/2" - 9 square feet - 277 pounds
- Dimensional Tolerance L & W  $\pm 3/16"$  & H  $\pm 1/8"$
- Minimum of 1/2" joints required

### Available Colors\* - West Region



Carcoal - Exposed Sand



Natural Gray - Exposed Sand

\*colors may vary, see actual pallets

### Features

- Uniform size and thickness for fast installation
- Exposed sand finish brings out the beauty of fine textured northwest aggregates
- Eased edges
- Large format paver for timeless and contemporary look
- Natural appearance due to slight color variations
- Available for pedestal installations (as a special order)

### Typical Installation

