

Peripheral Angiography

Hands-on training for image-guided interventional diagnostic skills

[LEARN MORE](#)



This learning module is designed for:

Interventional radiologists



Mentice Peripheral Angiography is designed for healthcare professionals to learn the essential skills of image acquisition and manipulation in a risk-free training environment. The module provides a range of patient cases with different peripheral anatomies and scenarios facilitating technical and procedural understanding for diagnostic purposes.

The module offers a guide to learn and teach good fluoroscopy and core angiography skills in a large number of cases within the vascular tree, from the renal arteries all the way down to the plantar arteries. The cases also include more challenging anatomies and vascular diseases. The portfolio as a whole represents comprehensive training in diagnostic procedures, with learning objectives designed to meet the needs of endovascular trainees and other members of the vascular team.

Features & Benefits

Key Benefits

Education on pump injectors, contrast agents and doses

Learning the correct clinical devices for peripheral angiography

Understanding X-ray equipment and minimizing radiation

Learning the procedural steps for core angiography

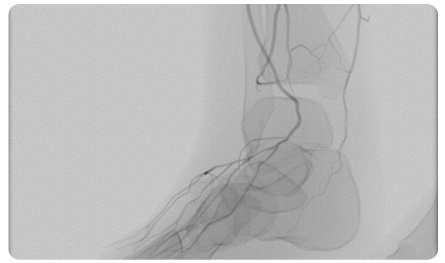
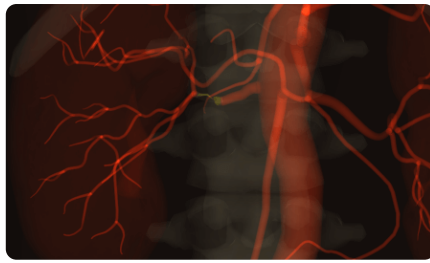
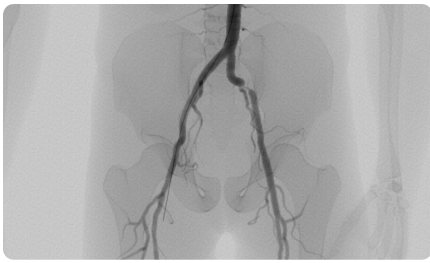
Interpretation of images and decision on treatment options

Features & Functionalities

- Complete clinical scenarios for patient- oriented learning
- Over 20 cases including renal, iliac, sfa and below-the knee lesions
- Detailed anatomies containing renal, iliac, superficial femoral, tibial, popliteal, fibular and plantar arteries
- Realistic device behavior requiring appropriate device selection
- Power injector with user definable volume and flow rate
- Possible to follow the run-off and observe distal blood flow
- Medications available to enhance procedural realism
- Vital signs responsive to catheter manipulation and placement
- Advanced visualizations to learn anatomy
- Detailed metrics for assessment and debriefing

Training Objectives

- Understand the peripheral vascular anatomies
- Select appropriate equipment such as introducers, wires and catheters
- Handle flush catheters for none-selective angiography
- Utilize the angiosuite equipment and C-arm in an optimal way
- Carefully manage radiation exposure
- Navigate tortuous anatomies, stenotic arteries and ostia
- Safely cannulate arteries to perform selective angiographies
- Understand techniques for crossing the aortic bifurcation
- Locate and identify lesions



For case description, please contact us [here](#)

Related Products

Learning Modules

Iliac-and-SFA-Intervention



Below-the-Knee-Intervention



Renal-Intervention

