

All-On-6: Entire Arch Restoration with DSI Next-Gen Multi-Unit

The wide range of DSI prosthetic parts gives the surgeon the freedom to find the ideal solution for every case.

Here is a perfect example - the removable denture based on the Premium Spiral Implants with a strong multi-unit anchoring the full upper overdenture.

Dr. Oscar Gutierrez Reyes

Cirujano Dentista UAEMex 2001

Especialista en Ortodoncia y Ortopedia Maxilar INESO-UNAM 2012

Diplomado en implantologia ISO-UNAM 2016

Odontologo de practica privada en Lerma y Toluca Edomex, Mexico



Dr. Oscar Gutierrez Reyes
Cirujano Dentista UAEMex 2001
Especialista en Ortodoncia y Ortopedia Maxilar INESO-UNAM 2012
Diplomado en implantologia ISO-UNAM 2016
odontólogo de practica privada en Lerma y Toluca Edomex, México



Paciente masculino de 61 años sin compromiso sistémico, con multiples ausencias de dientes. que acude demandando implantes dentales. el tratamiento sugerido es una protesis fija superior y removible con attaches Lock-Impl inferiores..

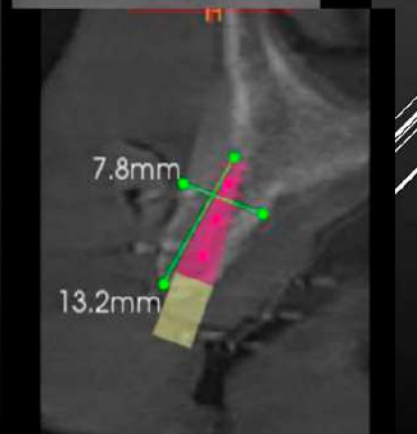
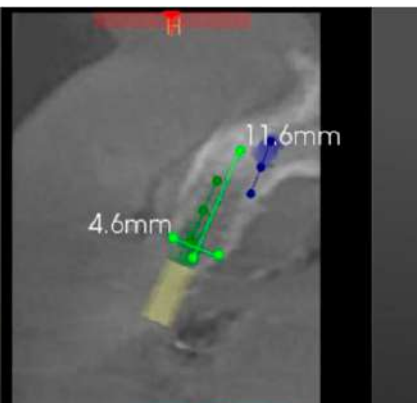
S

Implant zone 14 -15: Bone available 11.6 x 4.6, Dsi Premium Green Line Implant 3.5x11.5 is used Density 1300 HU bone type 1-2
 Implant zone 23 Bone available 7.8 x 13.2 Dsi Premium Green Line Implant 3.5x11.5

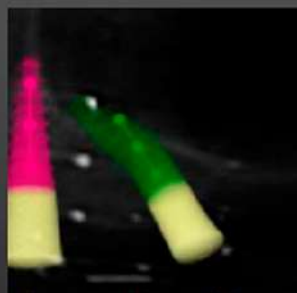
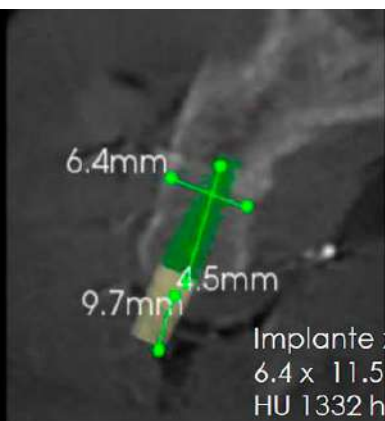
Planeación de implantes superiores

Implante zona 14 -15 : Hueso disponible 11.6x 4.6, para implante Dsi grenline 3.5x 11.5.. Densidad 1300 HU hueso tipo 1-2.

Implante zona 23 Hueso disponible 7.8 x 13.2 para implante DSI greenline 3.3x11.5 Hueso tipo3 densidad 873 HU transmucoso 3.5mm

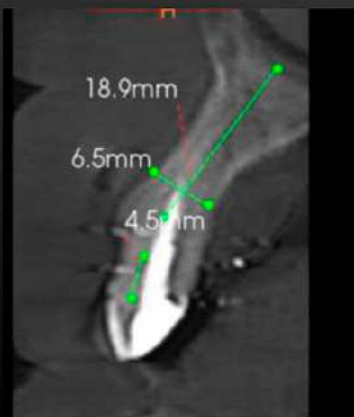


Implant area 24-26 angled bone available: 6.4 x 11.5 m, mm DSI Premium Green Line Implant 3.75 x 10. Density HU 1332 bone type 1-2



Implante zona 24-26 angulado hueso disponible: 6.4 x 11.5 m,mm para implante DSI Greenline 3.75 x 10. Dens HU 1332 hueso tipo 1-2

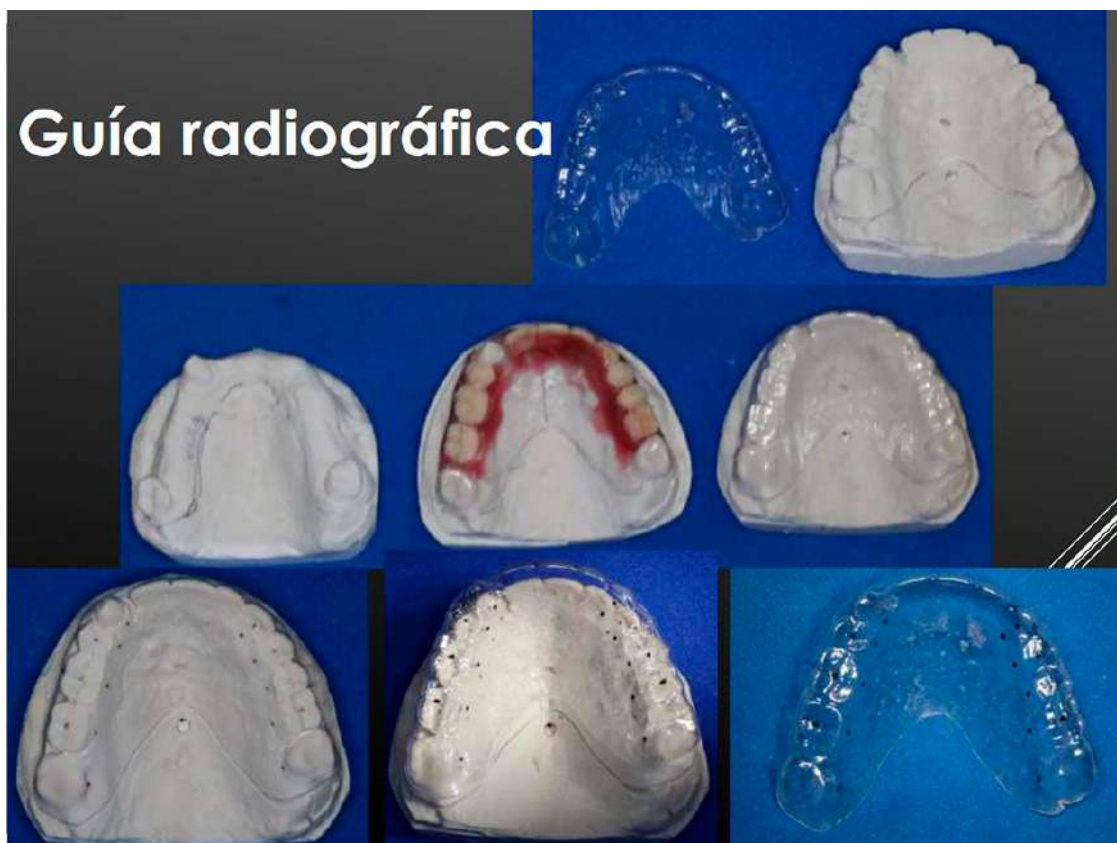
Implante zona 12-13 Fresar recto, con respecto a la razin del canino



Prosthetic planning; Full overdenture reconstruction arch surgical guide preparing

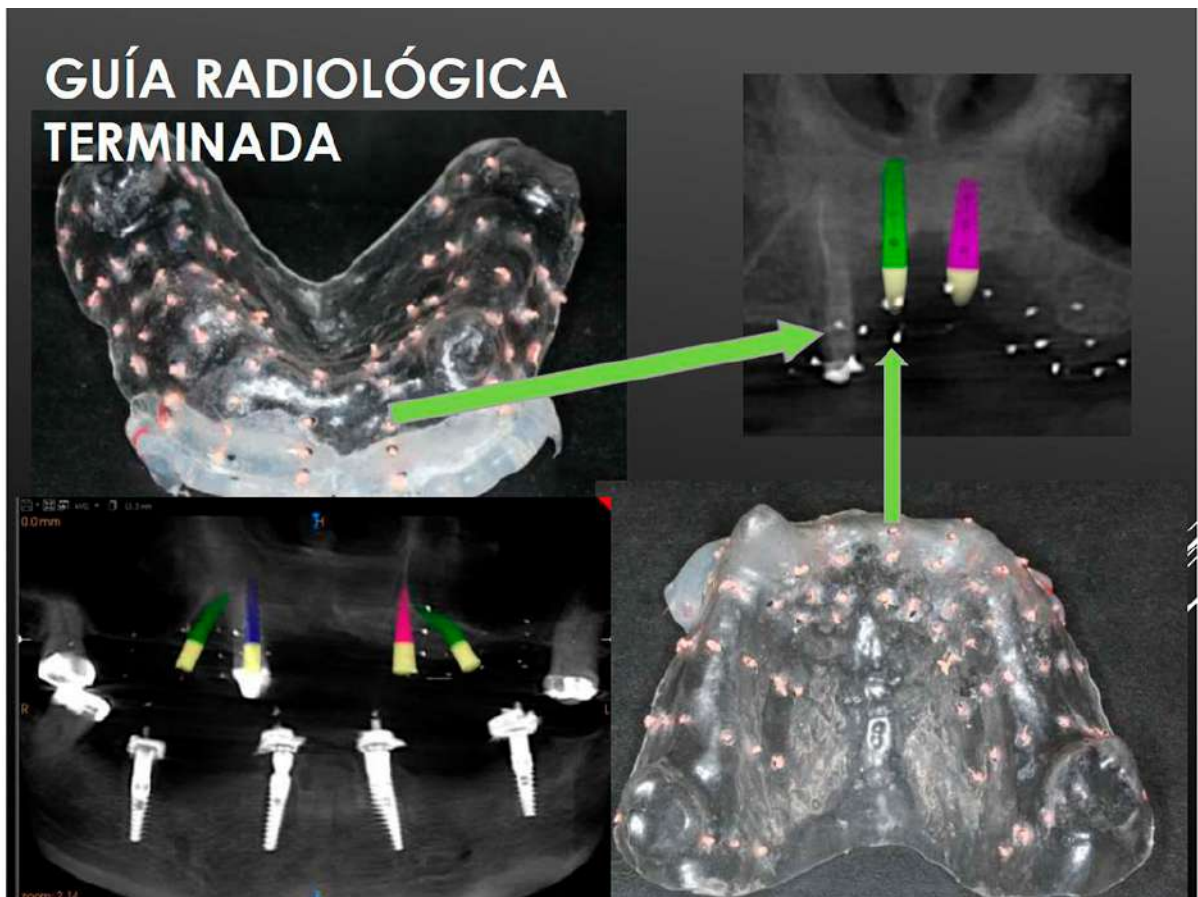


Prosthetic planning; x-ray guide preparing





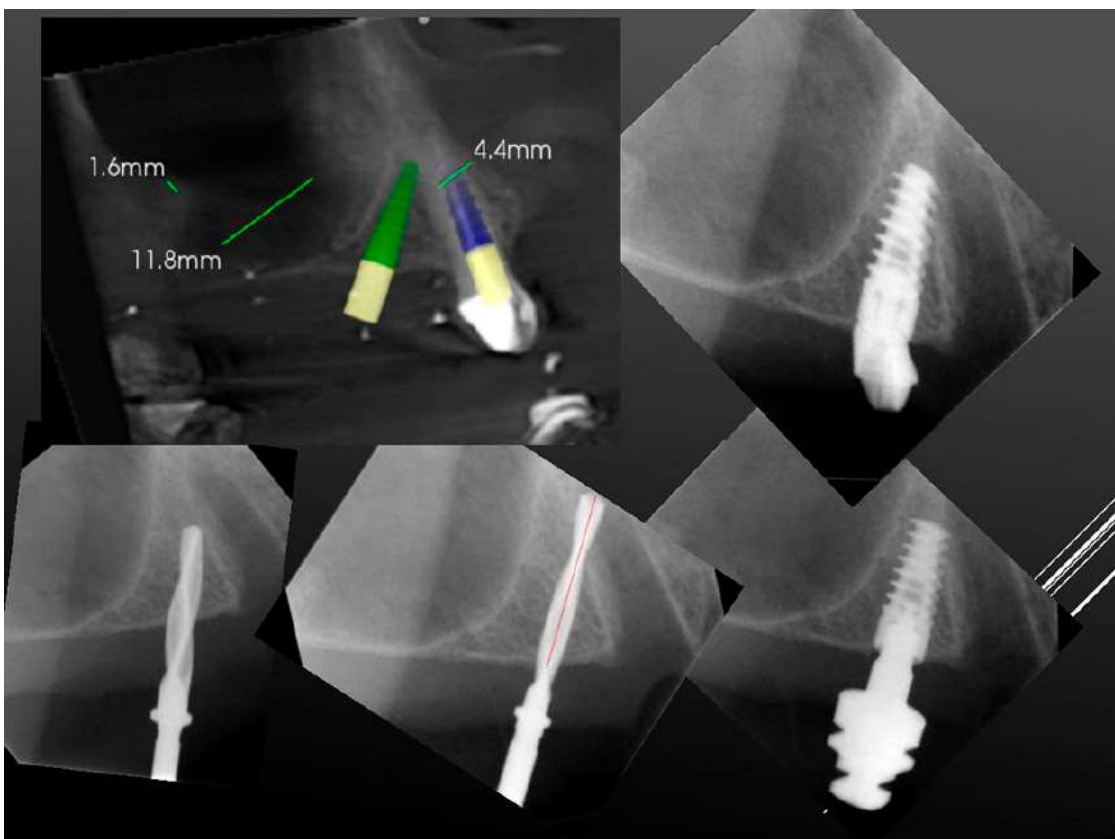
Prosthetic planning; x-ray guide - finished radiologic guide



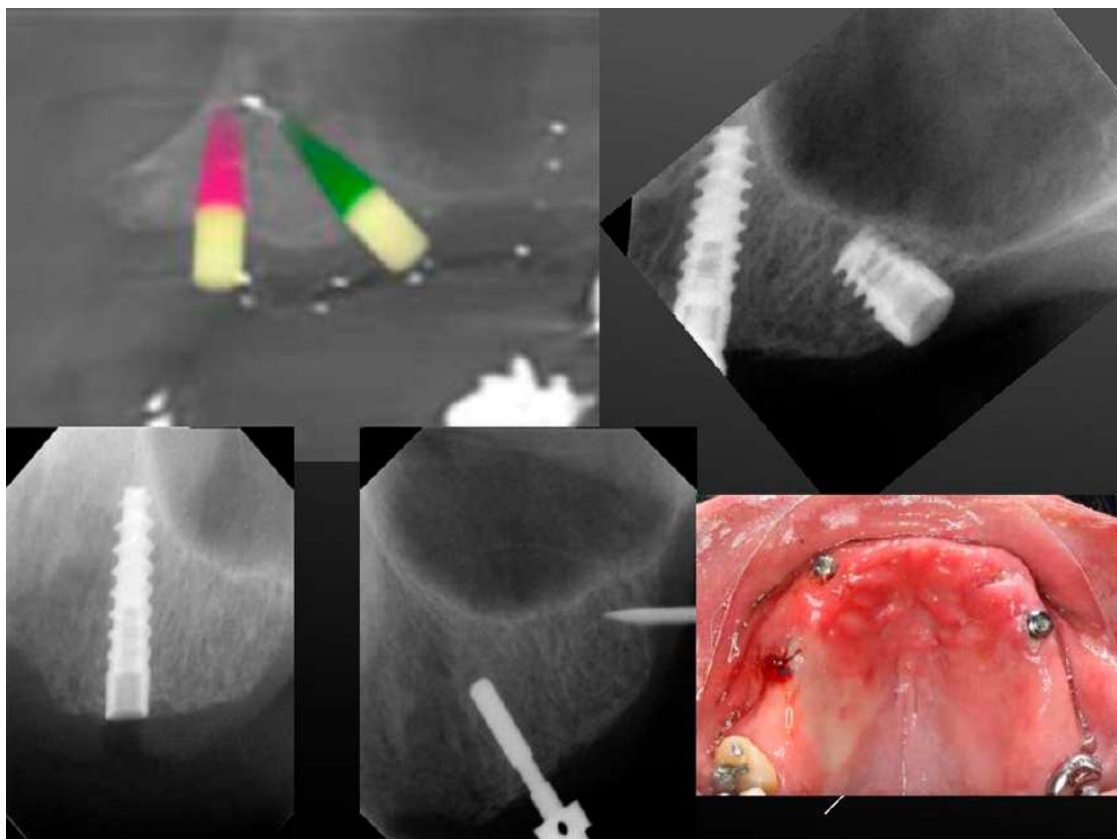
Surgical removal of the tooth, and socket preparation using surgical guide



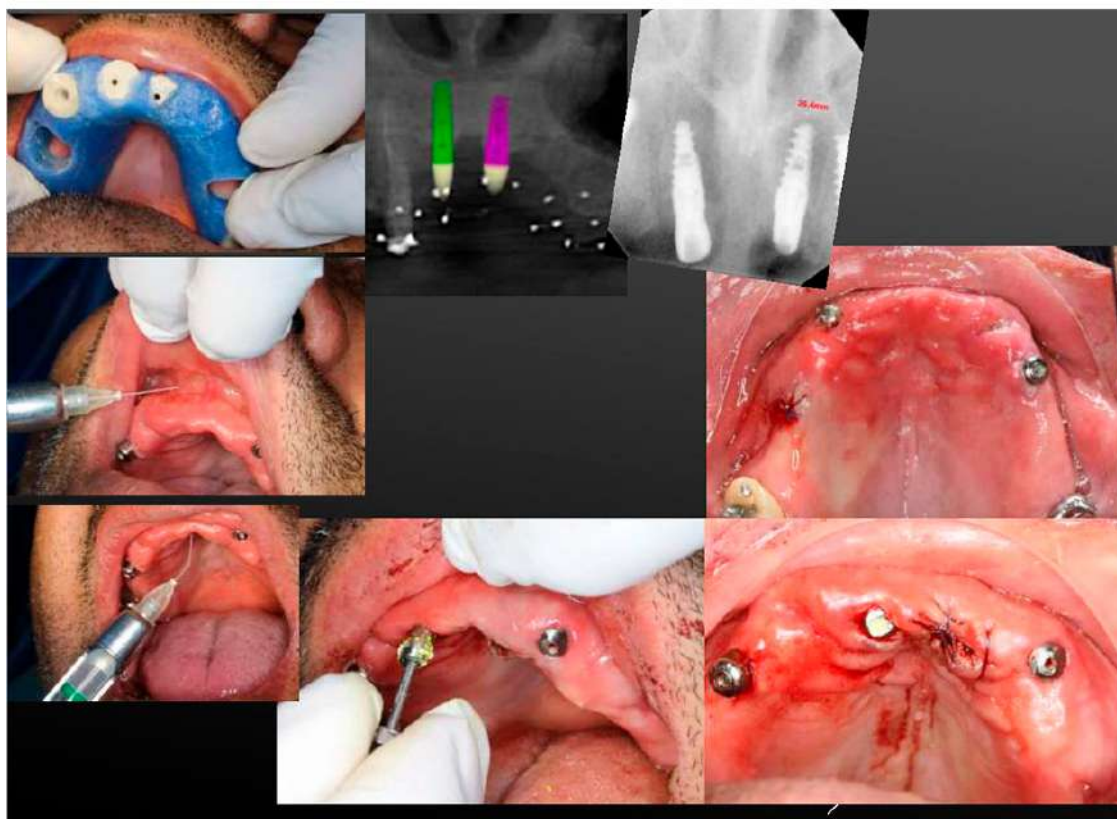
X-ray for more compelling and accurate procedure



Surgical guide insertion for defects and misalignment detection



Final checks and healing abutments removal



DSI multi-unit transfer impression.

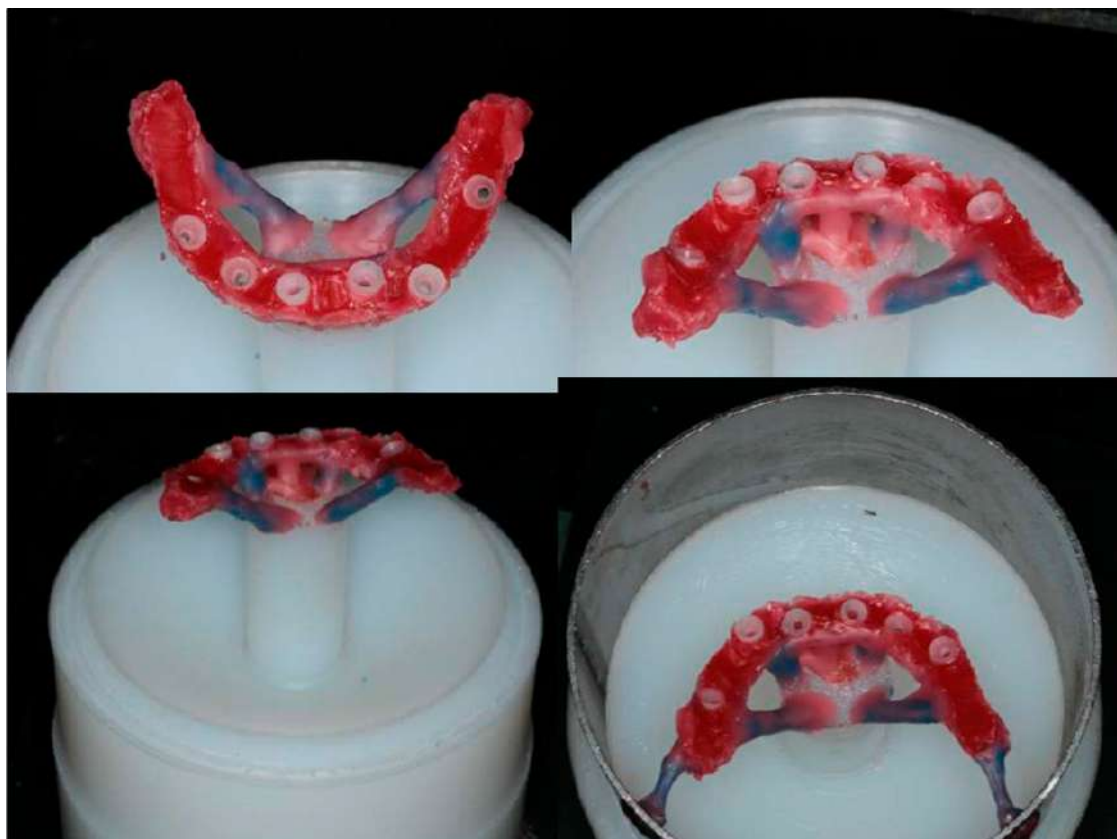
The lower jaw is reconstructed by using the Lock-attachment system. Full restoration was created in a previous visit of the patient



Model application using the DSI plastic sleeve on the multi-unit system



Creation of the model blank for the final restoration



Final restoration denture adjustments



Preparing the patient for the final restoration and cementing the multi-unit attachment system for the following procedure.



Final restoration is ready and set in the patient's mouth.



