



Made for DSI Ltd
59 haAvoda str.
Ashdod, 7706300 Israel
www.dsisrael.com
+972-8931-7235

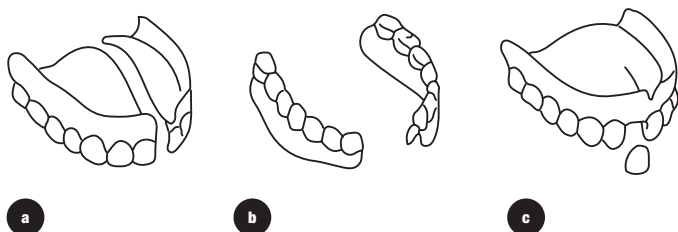
Repio Fix

Do-it-yourself Denture Repair Kit

DIRECTIONS FOR USE

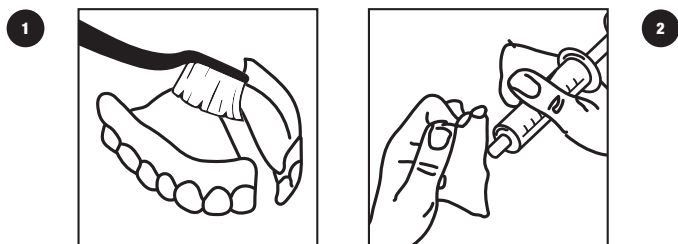
INDICATIONS:

- Broken Maxillar (upper) hard acrylic dentures (a).
- Broken Mandibular (lower) hard acrylic dentures (b).
- Dislodged acrylic teeth of a full denture (c).

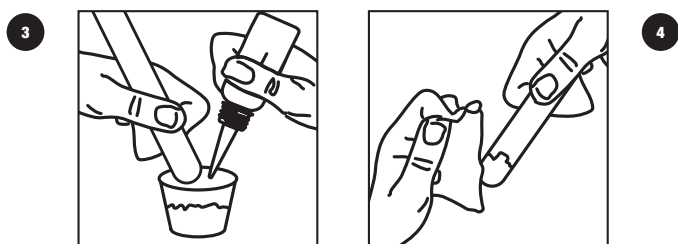


INSTRUCTIONS OF USE:

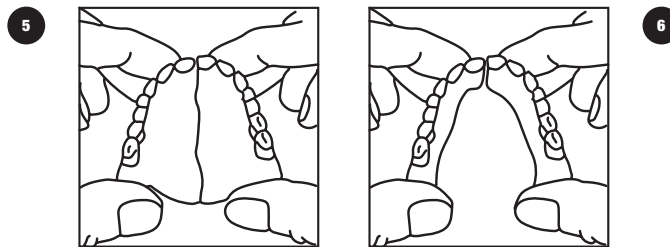
1. Use warm water with soap and brush to clean the denture as much as possible. Alcohol swabs might be used to remove stubborn residue or an old adhesive. (Fig. 1)
2. Join the pieces together, making sure no part is missing.



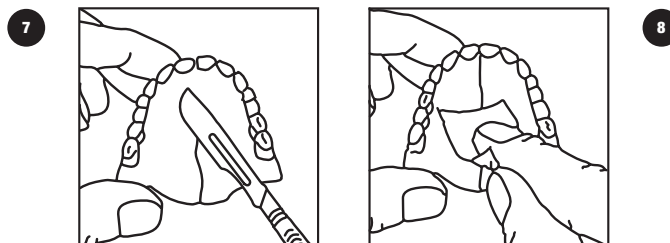
3. Dampen broken edges with a few drops of liquid. (Fig. 2)
4. Using the measuring cup, mix 5g of powder with 2-2.5ml of liquid. Add a liquid gradually until powder is saturated. Stir completely with a paddle for 5-10 seconds until a uniform pink paste is formed. (Fig. 3)
5. Using the paddle, cover broken edges of the denture with a paste. (Fig. 4)



6. Immediately fit the denture together, making sure the pieces are in correct alignment. Press the broken sections together and hold in position for 2 minutes. Caution – Repio Fix forms a permanent “cold weld” and cannot be separated. (Fig. 5-6)

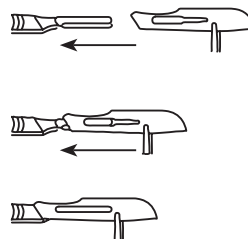


7. Saturate a cotton wad using a few drops of the liquid. Gently dampen the paste excess on both sides. Scrape away with a sharp scalpel blade, while holding the denture firmly in one hand. (Fig. 7)

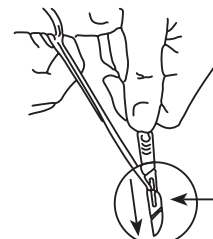


8. Put a denture in a hot (but not boiling) water for 4-5 minutes.
9. Remove from water and smooth off any rough or sharp edges of the cured denture with emery paper. (Fig. 8)
10. Clean the repaired denture using your usual denture cleaning agents before placing back in the mouth.

Attaching a scalpel blade:



Detaching a scalpel blade:



Note: Above instructions are for the repair of broken upper and lower dentures. For refixing of dislodged teeth modify the instructions as follows.

TOOTH PREPARATION:

1. Using the emery cloth, rub away some of the old hard acrylic in the tooth socket. If using the new tooth provided, skip to step 4.
2. Clean the old material from the back of the tooth with a scalpel.
3. Place the emery paper of a flat surface and rub the fitting surface of the dislodged tooth on it to remove the old hard acrylic.
4. Place a small amount of mixed Repio Fix acrylic in the prepared tooth socket.
5. Press the tooth into the socket, making sure it's aligned with adjacent teeth of the denture.
6. Follow steps 7-10. If using a new tooth and it's longer than other teeth, its length could be reduced using a small file or emery. If you are using a file, saw the tooth side to side, not front to back.

STORAGE: Store materials in a dry dark place. Always replace all caps immediately after use.

PACKAGING: Polymer Powder – 30 g, Monomer Liquid – 15 ml, Dosage Syringe – 1 pcs, Acrylic denture spare teeth set – 1 pcs, Scalpel Handle – 1 pcs, Scalpel Blades – 2 pcs, Measuring Vials – 2 pcs, Mixing Spatulas – 2 pcs, Alco Prep Pads – 4 pcs.

REF: REP-FX



FLAMMABLE