



# DSI

# Impression Materials Precise, safe and stable

WWW.DSISRAEL.COM

+972 893 17 235

+1.972.200.3265

INFO@DSISRAEL.COM



## UltraSil Putty VPS material



- Perfect operating time/setting time ratio.
- Exceptional consistency.
- Outstanding dimensional stability.
- Brilliant elastic properties (high elastic memory).
- Amazing tear strength.
- Non-sticky. Very smooth.
- Correct and simple to combine.
- Dimensional stability.
- Models could be discharged up to 3 weeks after impression taking.
- Deliquescent properties.

Package contents	Code
Into Kit Putty: Putty Base 50 g / Putty Catalyst 50 g	US-P50
Standard Kit: Putty Base 300 ml / Putty Catalyst 300 ml	US-P300

## UltraSil VPS Light Body VPS material



- Hydrophilic and thixotropic.
- Flows very easily without any bubbles.
- Dimensionally stable with the elastic recovery.
- Tear resistant.
- Outstanding flow characteristics for excellent surface coverage.
- Superior precision and high-resolution detail reproduction.
- Dual port cartridge stops clogs and cross-contamination between base and catalyst.

Package contents	Code
UltraSil Light Body, 2 x Cartridge 50 ml	US-LB50



## UltraSil Putty VPS material 2-stage kit

Package contents	Code
Full Impression Kit: 2 x UltraSil Light Body Cartridge 50 ml Putty Base 300 ml / Putty Catalyst 300 ml	US-PF300
Trial Impression Kit: 1 x UltraSil Light Body Cartridge 50 ml Putty Base 50 g / Putty Catalyst 50 g	US-PF50



# DSI

# Impression Materials Precise, safe and stable

WWW.DSISRAEL.COM

+972 893 17 235

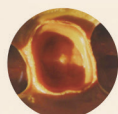
+1.972.200.3265

INFO@DSISRAEL.COM

DSI UltraSil has been approved as one of the most reliable impression materials. It is easy to operate and excellent in performance. Excellent **hydrophilicity** and **thixotropy** guarantee the precise reproduction of the subgingival details. Outstanding thixotropy and CE, FDA certifications ensure its safety. Also, the impressions prepared by **UltraSil** are super-stable and can stay up to 30 days of-shelf without significant dimensional change.

**Hydrophilicity** means the material has an affinity for water. **Thixotropy** is a time-dependent shear thinning property. **UltraSil Light body** is a thixotropic material, exhibiting a stable form at rest but becoming fluid when sheared or stressed. That means the material which is thick or viscous under static conditions will flow (become thin and less viscous) over time when sheared or stressed (time-dependent viscosity).

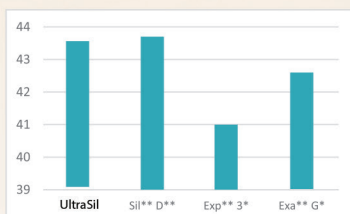
## Excellent hydrophilicity and outstanding thixotropy ensure the highest level of precision



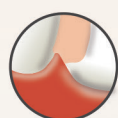
UltraSil is an additional-curing silicone impression material that combines **excellent hydrophilicity** and **outstanding thixotropy** that will significantly lower its viscosity under occlusal pressure to reach into even the finest subgingival areas to capture amazing details. And the strength of the impression ensures that it does not deform when removed.

## Outstanding thixotropy – flowability under occlusal pressure

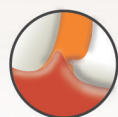
Flowability of different brands UltraSil Light body under certain



As the flowability table shows, under a certain pressure of **UltraSil Light body** also performs well, with enough flowability to flow into the even hardest to reach areas of the mouth.



Ordinary impression material **CANNOT** capture the details in this area  
Conventional impression materials haven't got the differential viscosity to perform under bite pressure adequately and don't have enough hydrophilicity, so they can't capture fine subgingival details.



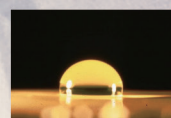
DSI UltraSil **CAN** capture the details in the finest area  
It lowers its viscosity under pressure and has excellent hydrophilicity, reaching into even the finest subgingival crevices – capturing amazing level of details.



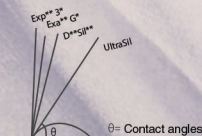
## Excellent hydrophilicity – Classic waterdrop test



UltraSil



Other Silicone material



Contact angles of Light Body of different brands

A small contact angle showed after the water was dripped onto **UltraSil Light body**. The smaller the contact angle, the more affinity the material shows in intra-oral conditions.

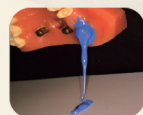
In comparison with other brands, the contact angle of **UltraSil** is much smaller than the other brands, which indicates that the material has excellent hydrophilicity.



## Outstanding thixotropy also guarantees the material's safety



UltraSil



Product B

Good thixotropy prevents **UltraSil Light body** to drip into the patient's mouth

Light body with poor thixotropy can easily drip from the preparation into the patient's mouth, which can cause discomfort or even choking. However, it won't happen when you use **UltraSil** as it has outstanding thixotropy.

## Outstanding thixotropy – high viscosity under static condition

UltraSil



Sil\*\* D\*\*



EXP\*\* 3\*



Exa\*\* G\*



In the room temperature (23 °C), inject the same quantity of light body onto the mixing paper, then place the paper vertically and observe the distance of the material flowing downward, higher viscosity means shorter travel distance.

From the above picture, we can find that **UltraSil Light body** has the highest viscosity under the standard static condition.



## Stable impression



DSI UltraSil impression material has good linear dimensional stability; the impression does not deform for a long time, can be poured for several times, and can be sent to the lab for the direct moulding.