



SMART GUIDE SERVICES

This guide presents the available services at EPFL Innovation Park and explains how to take advantage of them. It gives also an overview of some everyday life aspects in the Park.

**Reception of EPFL Innovation Park opens
from 8.00 to 12.00 and from 13.00 to 17.00**

Location: EPFL Innovation Park, Building C (ground floor), 1015 Lausanne
Tel.: +41 21 353 80 00

CONTENTS

Online services

- 3 Book-a-room
- 5 Job board
- 5 Approved suppliers
- 5 Fairmove
- 5 Ticketing for technical support
- 6 Web portal

Communication & networking

- 7 Company list
- 7 Private mobile application « EPFL Inno Park »
- 8 Events
- 8 LinkedIn

Business support

- 9 The team
- 10 Services

Sustainability

- 11 The team
- 11 Services

Practical services

- 12 Nursery
- 12 Food outlets

- 12 Sports center of UNIL at Dorigny

- 12 Lost and found

Access to buildings and services via Camipro card

- 13 What is a Camipro card/Gaspar account and how to obtain them?
- 14 Procedure in case of fire, flood or explosion
- 15 Procedure in case of theft or property damage

Parking and traffic in the Park

- 16 Private parking spaces
- 17 Parking spaces in green zone for startups
- 17 Parking spaces in white zone for visitors
- 18 Fairmove
- 19 Smart Guide Mobility
- 19 Traffic rules in the Park
- 19 Retractable pillars

Appendices

- 20 Sustainability Charter
- 21 Swiss Triple Impact program

ONLINE SERVICES

Book-a-room

Here are the conference rooms available at the Park, all are equipped with free Wi-Fi:

Building	Floor	Conference room	Windows	Beamer	ClickShare system	Seating capacity	m ²
A	4th	Venus	Yes	Yes	Available	20 people	47
A	1st	Saturne	Yes	75" LCD screen	Not available	16 people	38
B	Ground floor	Mercure	Yes	No	Not available	13 people	28
C	1st	Neptune	Yes	Yes	Available	50 people	86
C	3rd	Mars	No	No	Not available	16 people	34
D	Ground floor	Uranus	Yes	Yes	Available	60 people	90
D	Ground floor	Pluton	Yes	Yes	Available	40 people	60
D	3rd	Eris	No	No	Not available	15 people	29
D	4th	Cérès	No	No	Not available	15 people	29
I	2nd	Hauméa	No	No	Not available	15 people	29
F	Ground floor	Luna	Yes	Yes	Available	20 people	45
F	Ground floor	Jupiter	Yes	75" LCD screen	Available	20 people	49
F	Ground floor	Jupiter + Luna as one room	Yes	Yes + 75" LCD screen	Available	60 people	94
L	1st	Larissa	No	Interactive screen	Not available	8 people	29

● How to book

You can book via the app Book-a-room which is available within your portal environment if you have a profile as Company Supervisor, Company Administrator or Facilities (see portal profile types on page 6). You can also book online portable beamers, a speakerphone and our Klewel station.

Book-a-room is also available on our mobile app EPFL Inno Park.

● Available equipment to be picked up at the reception

- Portable beamer and speakerphone: booking is free and reserved for startups; any use outside of the Park is not allowed.
- ClickShare Connectors: wireless technology to plug to your laptop to connect to compatible beamers in the following conference rooms Luna, Jupiter, Uranus, Pluton and Neptune.

● Booking conditions for startups

EPFL Innovation Park supports the startups of the Park in their growth. That is why they are offered a free access to most of our conference rooms. Indeed, only the rooms Jupiter and Luna are subject to booking fees. In return, they are kindly asked to make sure to cancel online any unnecessary booking in order to optimize availability.

● Booking conditions for large companies

They have access to the purple-highlighted conference rooms in the table on the previous page and are invoiced for their bookings on a quarterly basis. Please note that conference rooms Uranus and Pluton need to be booked through the reception. To access rooms, please pick up the keys at the reception on the day of the event or sooner if availability allows for that.

● Other booking conditions

- Special offer Jupiter-Luna: prepay 10 half-days valid for these rooms only and get a 20% discount on the total cost. Prepayment is not refundable.
- Cancellation policy: booking can be cancelled free of charge until 2 working days prior to arrival, late cancellation penalty of 30% of the total reservation cost will apply within 2 days. Cancellations must be advised in writing to be taken into consideration.
- Room set-up: should you need any particular set-up, please let us know 2 weeks before so that we can order it from our supplier ISS. Like rental cost, set-up fees are invoiced on a quarterly basis and at cost price. Please note that these fees include your set-up and the return to the original set-up.

ISS rates: CHF 48,55.- (HT) per hour and per needed agent.

Your contact for reservations at EPFL Innovation Park



Nikolina Maric

Front Office Supervisor

reception@epfl-innovationpark.ch

021 353 80 00



Christine Prudente

Receptionist

reception@epfl-innovationpark.ch

021 353 80 00

● Other conference rooms available on campus

You can rent various conference rooms located at the UNIL-EPFL Continuing education in Building E and at the Rolex Center Forum, as well as the multipurpose rooms, auditoriums and classrooms on campus.

For further information please contact:

Mediacom-Event • + 41 21 693 51 27
events@epfl.ch • www.events.epfl.ch

SwissTech Convention Center: for large events from 100 to 3000 people and/or when needing several rooms i.e. plenary room, breakout rooms and workshops.

For further information please contact:

SwissTech Convention Center • + 41 21 693 42 42
tstcc@epfl.ch • www.stcc.ch

Job board

The companies of the Park can post job offers on the website of EPFL Innovation Park. Only collaborators with a profile as Company Supervisor or Company Administrator can manage them. Here is the link to the online job board:
<https://www.epfl-innovationpark.ch/jobs>

Approved suppliers

You can recommend a supplier to the community of EPFL Innovation Park by asking us to add its details onto our online list of Approved suppliers. Here are the steps to make your contact an Approved supplier:
<https://epfl-innovationpark.ch/approved-suppliers>

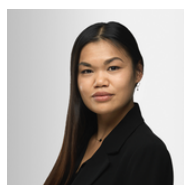
Approved suppliers are also available on our mobile application EPFL Inno Park.

Fairmove

Fairmove is our web-app for companies and their employees to access pre-paid daily parking spaces with or without charging point in our parkings in Lausanne and Saint-Sulpice.

Fairmove is also available on our mobile application EPFL Inno Park.

Your contact for Job board, Approved suppliers and Fairmove



Sophie Amy
Services Coordinator
021 353 80 29 • amy@epfl-innovationpark.ch

Ticketing for technical support

A ticketing service is available on the EPFL Innovation Park portal for Company Supervisors, Company Administrators, or Facilities to advise about any technical issue in the private premises or in the common spaces.

Your contact in case of urgent matters: maintenance@epfl-innovationpark.ch • 021 353 80 10



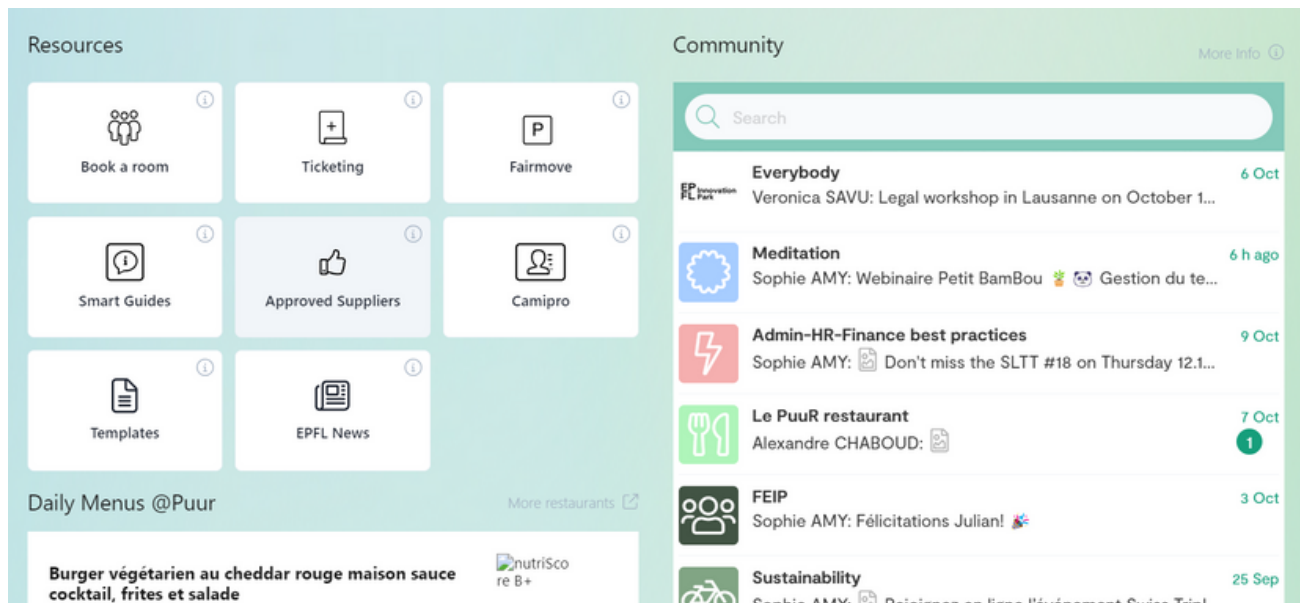
Julien Bidlingmeyer
Maintenance Manager
021 353 80 12



Micaël Ferreira
Maintenance Technician
021 353 80 15

Web portal

The portal allows you to access the online services offered by EPFL Innovation Park. Your access rights will depend of your profile type. Here is below a print screen that shows the portal homepage on a profile as Company Administrator with icons representing the available functions.



4 types of profile are available:

- 1 Company Supervisor:** provides access to all functions including all existing Smart Guides and lets you change any Employee profile type to Company Administrator. It is the only type created on our side.
- 2 Company Administrator:** provides access to all existing Smart Guides, allows to create an employee profile type and to use managing functions such as modifying the online company profile, booking a conference room, posting a job ad, requesting additional space (for startups only), or booking an available parking space in Fairmove.
- 3 Facilities:** provides access to all existing Smart Guides and allows to book a conference room, to create a ticket for an intervention of our maintenance team and to use online services such as viewing the job vacancies within the company or booking an available parking space in Fairmove.
- 4 Employee:** provides access to the Smart Guides Services, Sustainability and Mobility and allows to use online services such as viewing the job vacancies within the company booking an available parking space in Fairmove.

Your contact



Julian Bruno
Real Estate and Digital Projects
021 353 80 22 • bruno@epfl-innovationpark.ch

COMMUNICATION AND NETWORKING

Company list

All the companies based at EPFL Innovation Park in Lausanne and Campus Biotech Innovation Park in Geneva are listed on our following webpage <https://epfl-innovationpark.ch/companies/>

This page allows to filter companies by type or branch of industry but also to do a search by keywords. That is why we strongly encourage you to keep your company profile updated as soon as your company sets up in the Park. To do so, you need to have a portal profile as Company Supervisor or Company Administrator.

Please note that the information in your company profile gets public as soon as displayed in your profile.

Your contact



Sophie Amy

Services Coordinator

021 353 80 29 • amy@epfl-innovationpark.ch

Private mobile application EPFL Inno Park



Download the app and stay tuned about EPFL Innovation Park. You can use it also to advertise, exchange on the forum, announce events or to create groups. Access is reserved to employees of companies based in the Park or on Campus Biotech Innovation Park in Geneva.

Pieces of furniture and equipment to be given or sold: a special forum « Give, buy, sell » is available on the application.

Click on the following link for further information:

<https://epfl-innovationpark.ch/working-here/inno-park-app>



<https://epflinnopark.minsh.com/launch.html>

Events

Find them all on our mobile application and at <http://epfl-innovationpark.ch/events/> including our regular in-house events:

- Pizzas&startup : presentation of the on-site startups
- Thematic workshops
- Etc.

Your contact



Aurelie Schick

Head of Communication VPI

aurelie.schick@epfl.ch • 021 693 14 07

LinkedIn account

Keep yourself posted about current news and activities of the startups of the Park, our in-house events as well as those taking place on campus but related to companies based at the Park.

Here is the link of our LinkedIn account: <https://ch.linkedin.com/company/parc-scientifique-epfl>

BUSINESS SUPPORT

The team



Jean-Philippe Lallement

Managing Director

lallement@epfl-innovationpark.ch • 021 353 80 02



Lan Zuo Gillet

Deputy Managing Director

Program Director of Innosuisse startup training Business Concept

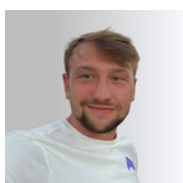
zuo@epfl-innovationpark.ch • 021 353 80 31



Björn Ignell

Marketing & Course Manager

ignell@epfl-innovationpark.ch • 021 353 80 33



Quentin Thiebauld

Marketing and Event Manager

thiebauld@epfl-innovationpark.ch • 021 353 80 34



Iohannès Bry

Manager of La Forge Incubator

Marketing & Administration Officer

bry@epfl-innovationpark.ch • 021 353 80 32



Véronique Bossel

Marketing & Administration Assistant

bossel@epfl-innovationpark.ch • 021 353 80 37



Simone Theiss

Program Manager

theiss@epfl-innovationpark.ch • 078 776 10 60



Marco Ruedi

Coach

Fields of expertise : Life science, Pharmaceuticals, BioTech, MedTech, B2C/B2B

ruedi@epfl-innovationpark.ch • 079 715 37 25

**Reto Hartmann**

Coach

Fields of expertise : Life science, BioTech, MedTech, B2B

hartmann@epfl-innovationpark.ch • 079 700 12 50

**Pascal Dutheil**

Coach

Fields of expertise : Financing for startups, small & medium enterprises, Financial planning, Investors and Shareholders relations

dutheil@epfl-innovationpark.ch • 079 366 95 65

**Simon Johnson**

Coach

Fields of expertise : Internet applications & solutions, Mobile telephony & internet, GPS mapping & tracking, Fiber optic communication, Track & Trace, RFID solutions, Drones, Sensors, Renewable energy

johnson@epfl-innovationpark.ch • 079 202 57 92

Services

- **Training:**
 - **Innosuisse Business Ideas & Business Concept, Western Switzerland:**
Contacts: Lan Zuo Gillet, Quentin Thiebauld, Iohannès Bry & Véronique Bossel
www.science2market.ch
 - **Startup Board Academy & Sales Management Academy:**
Contact: Björn Ignell • <https://startupboardacademy.org/startup/>
• <https://www.fast-track.top/sales-academy>
- **Coaching:** see how and in which areas our coaches can assist you as well as their profiles on our webpage <https://epfl-innovationpark.ch/startups/coaching>
- **Acceleration programs:**
Lan Zuo Gillet & Quentin Thiebauld • <https://epfl-innovationpark.ch/startups/acceleration>
- **Startup incubation (La Forge):**
Iohannès Bry • <https://epfl-innovationpark.ch/startups-incubation-and-hosting/la-forge>
- **Corporate-startup partnership:**
<https://epfl-innovationpark.ch/startups/partnering-programs>

SUSTAINABILITY

The team



Emma Dorée

Head of Sustainability & Real Estate Services

doree@epfl-innovationpark.ch

021 353 80 21



Géraldine Fiol

Sustainability Consultant

sustainability@epfl-innovationpark.ch

021 353 80 27

To book a meeting: <https://calendly.com/geraldinefiol/epfl-innovationpark-sustainability>



Sophie Amy

Services Coordinator

amy@epfl-innovationpark.ch

021 353 80 29

Services

- **A Sustainability Charter** (see the charter in appendix 1) has been developed to foster a collective mindset within the Park in favour of sustainable development in its three dimensions: economic, social and environmental.
- EPFL Innovation Park is Ecosystem Partner of the **Swiss Triple Impact (STI) program**. This program is a simple, three-step pathway supporting companies to integrate Sustainability within their strategy and make concrete commitments for the Sustainable Development Goals (SDGs). *Special prices for EPFL Innovation Park companies (see the presentation summary in appendix 2).*
- **Sustainability Leaders Think Tank (SLTT)**: a monthly event to network with other companies of the Park, exchange, raise questions and share company needs on Sustainability matters. Every second Thursday of the month at 12.30 pm. Open to all the collaborators of the Park.
- **Sustainability group in Private mobile application EPFL Inno Park**: to receive the latest and broad news and events in relation with Sustainability at EIP.
- Find out more about Sustainability at the Park here: <https://epfl-innovationpark.ch/societal-impact/our-commitment>

PRACTICAL SERVICES

Daycare center La Nanosphère (building I)

It is a private organization which welcomes kids from 3 months to 4 years old. For any inquiry, please contact:

La Nanosphère • +41 21 694 29 00
info@lananosphere.ch • www.lananosphere.ch

Food outlets

- Self-service restaurant Puur Innovation in building J: open from Monday to Friday and from 8:00 am to 4:00 pm, it offers a daily variety of menus, salads and other fresh and healthy dishes as well as catering services. Find the menus at: <https://www.epfl.ch/campus/restaurants-shops-hotels/fr/restauration/self-service/le-puur/>

For any inquiry, please contact: **PUUR Innovation** • +41 79 413 88 79
puur.epfl@eurest.ch • <http://restauration.epfl.ch/puur-innovation>

- Food Truck Fleur de Pains: open from Monday to Friday from 8.00 am to 2.30 pm, it is located in front of the main entrance of building C opposite the green car park area. It offers a choice of sandwiches, viennoiseries, salads, snacks, bakery and drinks.

Fleur de Pains
info@fleurdepains.ch • www.fleurdepains.ch

- Other food outlets on campus (cafeterias, restaurants, food trucks, markets, grocery stores, etc.) can be found at www.restauration.epfl.ch

Sports center of UNIL at Dorigny

Employees of companies based in the EPFL Innovation Park are entitled to access the sports center and can benefit from a special rate (rate category D).

Further information on: <https://www2.unil.ch/css/>

Lost & Found service

The reception keeps lost items, please get in touch for any claim:

reception@epfl-innovationpark.ch • 021 353 80 00

ACCESS TO BUILDINGS AND SERVICES VIA CAMIPRO CARD

Main access doors of the buildings of the Park are open from 7.00 am to 7.00 pm from Monday to Friday. When closed, access is only possible by badging with a Camipro card at the entrance.

What is a Camipro card/Gaspar account and how to obtain them?

Camipro card: it allows you to enter the buildings as well as the underground parking areas round the clock and seven days a week. It serves also as an accreditation that entitles you to access the whole campus and offers several other functions such as paying with at the food outlets on campus.

Further information at: www.epfl-innovationpark.ch/camipro

To order it, please fill in the e-form available on our website (www.epfl-innovationpark.ch/camipro) and email it with the mentioned supporting documents at the following address: camipro@epfl-innovationpark.ch.

Loss of your card: you should block it to avoid any misuse. Two ways to do so:

- 1 Log into your MyCamipro account with you Gaspar credentials (see hereafter how to obtain them) and go to the menu.
- 2 Contact the Centralized command center (PCC in French) of EPFL reachable round the clock and seven days a week on 021 693 40 00 or at cae@epfl.ch.

Replacement of your lost, stolen or faulty card: it is subject to replacement fees of CHF 25.- except in case of theft and provided you can give a written proof of a formal complaint; you will also be exempted in case of a manufacturing fault. But if the card got faulty because of a bad use (bent card for instance), the replacement fee will apply.

Gaspar account: it is an interface with logins that allows to take advantage of EPFL services. You do not need to do anything to get it as the logins are automatically sent to the email address you provided to obtain your Camipro card. You can change them once logged into your account. For security reasons, you will need to change your GASPAR password at least once every 6 months.

Further information at: <https://gaspar.epfl.ch/cgi-bin/gaspar-web>

Here is the link to log into your Gaspar account: <https://gaspar.epfl.ch/cgi-bin/gaspar-web>.

(We recommend you to save a recovery email address in your account in case you forget your password).

Your contact for enquiries about the Camipro card or the Gaspar account



Nikolina Maric

Front Office Supervisor

camipro@epfl-innovationpark.ch

021 353 80 00



Christine Prudente

Receptionist

camipro@epfl-innovationpark.ch

021 353 80 00

Procedure in case of fire, flood or explosion



- Call the fire brigade immediately on 118 and activate the building's fire alarm system so that your call can be located

Or

- Dial 021 693 30 00 (EPFL units can dial directly 115)

- If possible, assist any person in immediate danger to safety, but do not put yourself at risk
- Close all doors
- Turn off gas, electrical, laboratory equipment and remove any flammables from hazardous area
- Use a nearby fire extinguisher to control and extinguish the fire.



Fire extinguishers are located in the cabinets in the hallways near the lifts (red signs in picture on the left).

In the event of an emergency necessitating evacuation of the premises, a siren will sound intermittently, please take the following steps:

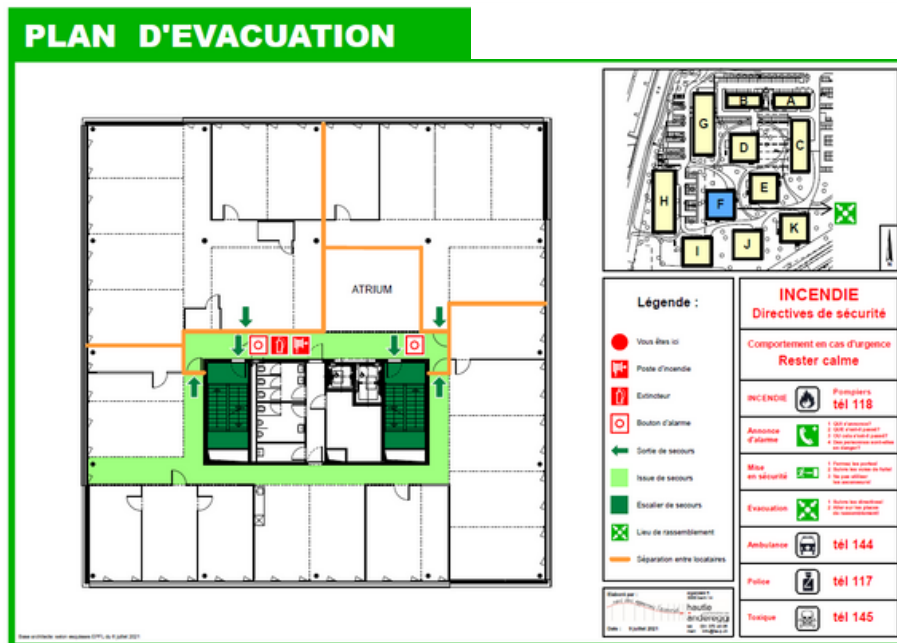
- Calmly leave the building immediately taking your Camipro card and keys
- Use staircases only and follow the emergency exit signs. The use of the lifts is strictly forbidden. Emergency exits or escape roads are marked by illuminated signs or pictograms. You will find an evacuation plan in the hallways of each floor (an example is shown hereafter).
- Go to a designated assembly point (see plan hereafter with green symbols) where headcounts can be taken. Evacuation will be supervised by members of the fire brigade.
- Once first aid team is on site: report anyone suspected of remaining in the building and any particular danger (products, installations, etc.)

An emergency shower for laboratories accidents is available in building L, entrance south-west, 1st floor.



Hereafter an example of Evacuation Plan with an indication of the assembly point.

Example of an evacuation plan



Procedure in case of theft or property damage

Within common areas: please inform us as soon as possible to reception@epfl-innovationpark.ch. Our Maintenance department will monitor any reported situation.

Within private areas: private equipment is under responsibility of its owner. By private material we mean personal belongings and its contents stored temporarily or not.

Any theft or property damage should be reported to the police. You can file a complaint in any police station of the canton of Vaud, the nearest ones are:

- police station of Ecublens, Route du Bois 2, 1024 Ecublens / 021 622 80 00
- police station of Renens, Avenue de Longemalle 1, 1020 Renens / 021 557 01 21

In order to improve security over the Park, we would appreciate that you keep us informed about any theft or property damage that you suffered. It would allow us to let EPFL competent service know as well as to alert people working at EPFL Innovation Park.

PARKING AND TRAFFIC IN THE PARK

Private parking spaces

In view of their limited number, EPFL Innovation Park allocates a quota to each company according to the size of its rented premises.

Type of place we have for rent:

- Underground parking space
- Outdoor parking space
- Underground parking space for motorbike
- Underground parking space with charging station

Only companies which are current tenants of the Park can lease on behalf of their employees. Therefore, we kindly ask you not to contact us if you are not entitled to take out leases on your company behalf. Ask Theo (startups) or Julian (large companies) for parking prices.

Your contact for startups



Théo Bouchardy

Real Estate Administrator

021 353 80 23 • bouchardy@epfl-innovationpark.ch

Your contact for large companies



Julian Bruno

Real Estate and Digital Projects

021 353 80 22 • bruno@epfl-innovationpark.ch

Other parking spaces available at the car park of the SwissTech Convention Center (see map p. 18)

Rate is CHF 200.- incl. tax + CHF 75.- excl. tax for registration fees. Please contact:

Comptoir Immobilier

021 313 23 33 • locationlausanne@comptoir-immo.ch

Usurpation of your parking space

Please contact Securitas agents at 021 693 89 79 or at 079 857 41 68 and let them know the brand, colour and plate number of the vehicle which occupies your place in order for them to come and fine it. They will as well allow you to exceptionally park for free in green zone. In case it happens again, Securitas can have the vehicle towed away. Warning, Securitas does not operate in the car park of building L and in the car park of buildings M and N. For tenants renting parking spaces there and having their space usurped, we kindly ask you to send an email with the following information to bouchardy@epfl-innovationpark.ch:

- A photo of the front and rear of the vehicle with the plate number and brand of the vehicle
- A photo with the number of the parking space

Parking spaces in green zone for startups

Parking in green zone is not allowed for large companies.

A quota of annual parking authorizations is allocated to some companies of the Park depending on the number of authorizations provided by EPFL. This quota decreases every year.

Companies wishing to inquire about their quota or activate their permit for the first time should contact Théo Bouchardy. One of your employees will then be designated as administrator to manage the allocation of your authorisation within your company at the EPFL parking desk. This administrator can be changed afterwards by contacting Théo Bouchardy or our reception.

For further information on the process to authorize people to park in green zone:

<https://www.epfl.ch/campus/mobility/fr/mobilite-et-voyages/mobilite-pendulaire/parking-bornes/>

Your contact



Théo Bouchardy

Real Estate Administrator

021 353 80 23 • bouchardy@epfl-innovationpark.ch

Parking spaces in white zone for visitors

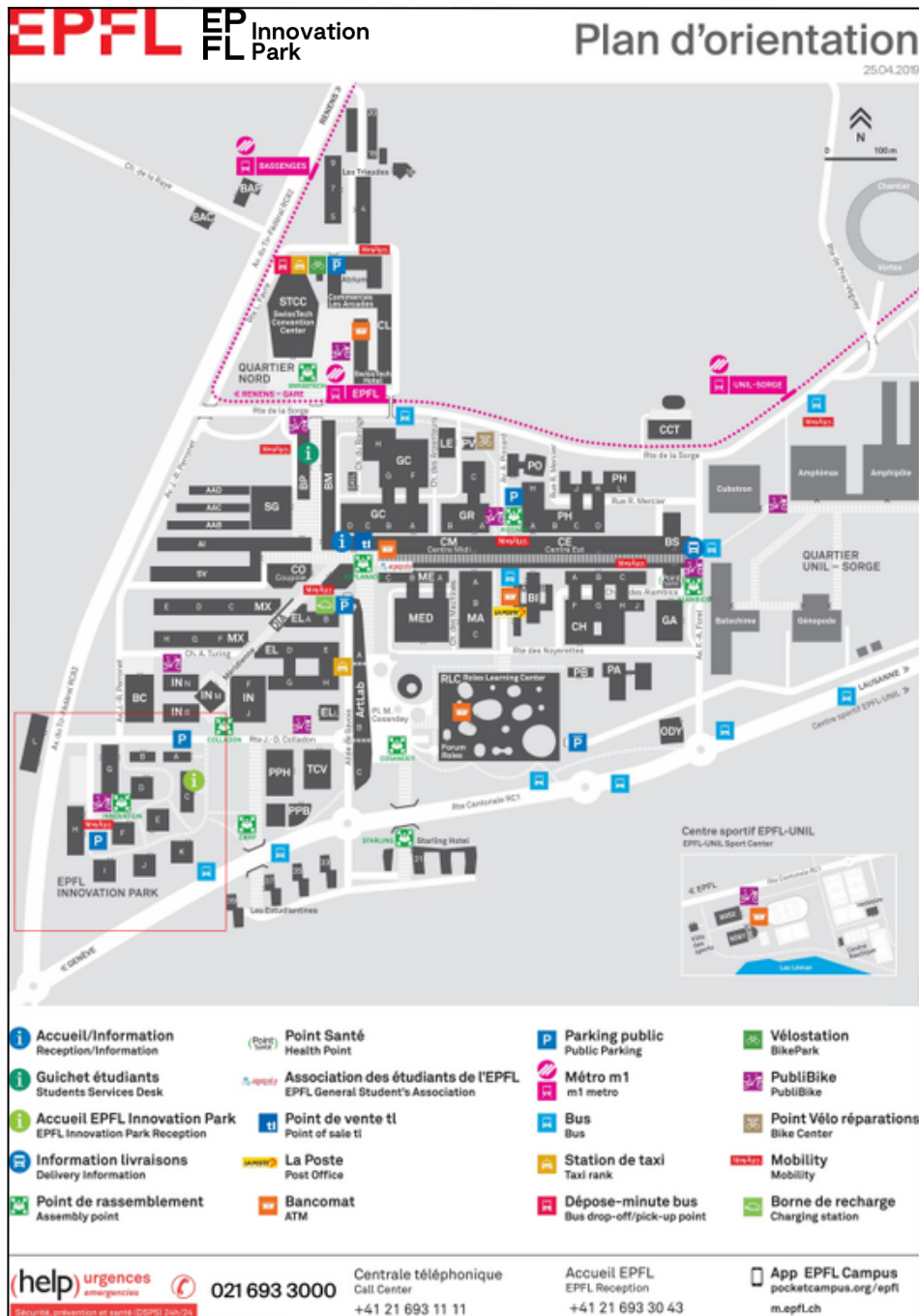
35 spaces with meter are available on the right side of building A, 15 in front of building H and some more in the underground car park at the Rolex Learning Center.

Furthermore, 3 spaces are allocated to **people with reduced mobility** nearby building H and I, 3 between buildings G and H and 3 at the underground car park at the Rolex Learning Center.

A payable **parking space with charging station** is located close to building H, parking being limited to 4 hours max. per use.

See locations on the map on the next page and find further information including rates on the following webpage:

<https://www.epfl.ch/campus/mobility/vehicles/car-parks/white-places/>



fairmove

The Parkshare platform has now been shut down in favor of a brand new Fairmove interface for booking and for paying parking slots. This solution, aims to simplify your experience and is open to all the employees of the EPFL Innovation Park.

The Fairmove platform for prepaid daily booking parking slots is accessible through our [portal](#). If you don't have your access, please contact your administrator or supervisor within your company to create an account. For the portal users, login via [this link](#) to obtain the user guides for the platform, as well as the new parking rules.

For further information: <https://epfl-innovationpark.ch/working-here/fairmove>

Your contact



Sophie Amy

Services Coordinator

amy@epfl-innovationpark.ch

021 353 80 29

Smart Guide Mobility

The aim of the Smart Guide Mobility is to inform the EPFL Innovation Park community about offers, infrastructures and events related to commuting or professional mobility on campus.

The electronic version of this document can be found [here](#).

If you have any questions about the content of the Smart Guide Mobility, you can contact Emma Dorée or Sophie Amy



Emma Dorée

Head of Sustainability
& Real Estate Services
doree@epfl-innovationpark.ch
021 353 80 21



Sophie Amy

Services Coordinator
amy@epfl-innovationpark.ch
021 353 80 29

Traffic rules at EPFL Innovation Park

ZONE



Meeting zone and zone limited to 20 km/h located in the north-western part of the Innovation Park between Buildings G and H:

- pedestrians have right of way
- drivers leaving a parking lot or a parking space must give way



Zone limited to 30 km/h located all over the Innovation Park apart from the above-described zones:

- drivers must give way to traffic coming from the right and give way in any case when leaving a parking lot or a parking space
- pedestrians do not have right of way but can cross wherever they want (generally, there is no pedestrian crossing)

At the end of zone, the general speed limit of 50 km/h applies.

Retractable pillars

Two retractable pillars are located at the entry of the pedestrian areas to maintain security and thus ensure soft mobility. The reception can lend you a smart card to put them down in case of move or special delivery. The card reader is nearby the entry pillar close to building I, the exit pillar close to building C goes down automatically when it detects the vehicle.

For any further information, please contact our Maintenance department: maintenance@epfl-innovationpark.ch.



You may find this guide not exhaustive or wish to make some comments. If so, please do not hesitate to contact me.

Sophie Amy – Services Coordinator
amy@epfl-innovationpark.ch • 021 353 80 29

APPENDICES

1. Sustainability Charter (available in French as well)



Sustainability Charter

Sustainability Charter between EPFL Innovation Park and the company _____
(specify the name of the company)

The EPFL Innovation Park has an ambitious mission:

Be a dynamic ecosystem maximizing the transfer of innovations to the economy for a positive impact on society, while limiting its impact on the environment.

Leading by example, the EPFL Innovation Park is committed to :

✓ addressing 4 major challenges to sustainability by **CONTRIBUTING TO THE 2030 AGENDA**.

GOAL 1





By 2027, more than 75% of startups in the EPFL Innovation Park integrate a sustainability approach into their business model and contribute to the Agenda 2030.

GOAL 3




By 2025, we recycle 65% of the waste generated on the EPFL Innovation Park site, compared to 30% in 2022.

GOAL 2





By 2025, 50% of our main suppliers meet our responsible purchasing criteria and all sign our Supplier Relationship Charter, compared to 2022.

GOAL 4






By 2023, 100% of new buildings in the EPFL Innovation Park are certified as sustainable construction equivalent to Minergie P Eco or higher and 50% of the remaining existing buildings are certified as sustainable construction equivalent to Minergie by 2030.

✓ promoting a **COLLECTIVE MINDSET** for sustainable development within its ecosystem of partners, especially the companies of the Park.

By signing this charter, your company commits to:

- Acknowledge the sustainable measures and commitments** adopted by the Park and participate in their achievement
- Contribute to a positive social impact**, to the best of your ability through your business model and value chain, in order to reconcile economic performance with social and environmental
- Promote sustainable mobility** among your employees (eg. alternative to private cars, parking spaces optimization, promotion of soft mobility and public transport) to create better accessibility and to fight against climate change
- Designate an internal contact person, called **Sustainability Respondent**, whose role is to:
 - Participate, relay and promote internally the Park's information, events and tools related to Sustainability Leaders Think Tank (eg. Smart Guide Sustainability and Mobility, the EPFL InnoPark app,...)
 - Provide feedback and suggestions on sustainability topics at sustainability@epfl-innovationpark.ch to help EPFL Innovation Park develop appropriate tools & programs for your company

If identified, please indicate:

Last name, first name of Sustainability Respondent:

Sustainability Respondent's email address:

Name of the Manager:

Date: _____ Signature: _____

2. Swiss Triple Impact (STI) program



Make your business future-proof and develop operational practices on sustainability that will give you a competitive advantage

Join the Swiss Triple Impact tailored program developed for EPFL Innovation Park

Initiated by B Lab Switzerland, the Swiss Triple Impact program support Swiss companies in measuring their contributions to the Sustainable Development Goals (SDGs), identify the most important areas for improvement, opening up new business opportunities and boosting innovation.

**3 steps
program**

**Workshops &
coaching**

**Peer-to-peer
learning**



For whom

Swiss companies of all sizes and sectors, not-for-profits or for profits.

- ✓ Startups
- ✓ Established companies
- ✓ Industry leaders

Participants @ EPFL Innovation Park



“The Swiss Triple Impact program gave me the opportunity to step back and align my actions with my vision, to better understand how to prioritize them and select those that make sense for my core business in order to have the greatest possible impact.”

Sefkat Hotin,
Founder, Everwise



Why become a participant ?

Measure your impact

- ✓ Learn sustainability best practices
- ✓ Take a first step towards certification
- ✓ Contribute to the first swiss-wide SDGs benchmark

Identify Opportunity

- ✓ Better manage risks
- ✓ Lower your costs
- ✓ Boost innovation and growth

Take Action

- ✓ Define your action plan
- ✓ Make pledges
- ✓ Become a member of the first STI Directory

Participants engagements?

Follow our 4 to 8 months programme (about 0,2 FTE)

Participation fees based on your company size + special discount for the EIP community

Act on the pledge you make



"The fact that the Park proposes a program that is affordable and concrete helped to convince my management and to engage them in the process. They understood the impact that this approach would have on the company's business and image."

Yasmina Sandoz

Marketing & Communications Director, Global ID

Become a participant today

Register for a free introduction workshop

EPFL Innovation Park contact

STI Coordinator

Want to learn more?

Get in touch with your Contact at EPFL Innovation Park



Emma Dorée

doree@epfl-innovationpark.ch
+41 21 353 80 21
<https://epfl-innovationpark.ch/>



Sophie Amy

amy@epfl-innovationpark.ch
+41 21 353 80 29
https://epfl-innovationpark.ch



Elisabeth Pfund

elisabeth@blab-switzerland.ch
+41 78 772 38 85
www.swisstripleimpact.ch