



Qualification
Overview



Levels & Qualification Nos:

BEGINNERS (A1)	601/2327/8
IMPROVERS (A2)	601/2328/X
INTERMEDIATE (B1)	601/1930/5
INDEPENDENT USER (B2)	601/1931/7
ADVANCED (C1)	601/1932/9
PROFICIENT (C2)	601/1933/0

Operational Start Date:	01/01/14
Version Number:	01
Date of Issue:	01/01/14



Introduction

NOCN has been providing a qualification and accreditation service to providers across the UK for over 25 years and is justifiably proud of its reputation as "...a provider of fully accessible, trusted and flexible qualification and accreditation services". It also operates in the international market.

Over the years, NOCN has worked effectively with our centres for the benefit of learners; with a mutual interest in providing a continuously improving service. NOCN, whilst retaining all the advantages of being a national body, has always provided a personal, bespoke service to its customers and prides itself on its local presence and expertise within communities.

ESOL International Qualifications

ESOL International qualifications are designed for learners who are not native speakers of English and who wish to achieve a high quality, internationally recognised qualification in English that is available and recognised world-wide and, at the highest level (NQF Level 3/CEF C2), are suitable for learners who are preparing for entry to higher education or professional employment in the UK or elsewhere. NOCN International qualifications are also recognised by ASEP, the Greek Supreme Council of Personnel Selection.

ESOL International qualifications are designed to reference the descriptions of language proficiency in the Common European Framework Reference for Languages (CEF). The levels in the CEF have been mapped to the levels in the National Qualifications Framework for England, Wales and Northern Ireland (see Pathways to Proficiency: the alignment of language proficiency scales for examining competence in English Language DFEX/QCA, 2003).



ESOL International qualifications are designed for learners who are not native speakers of English and who wish to achieve a high quality, internationally recognised qualification in English.



Examinations

The NOCN ESOL International qualifications are externally assessed through four examinations per level. The format of the examinations is:

A1

	PART	TASK TYPE		SCORE
Listening	1	10 (abcd) MC questions		20%
	2	10 (abcd) MC questions		
	3	10 (abcd) MC questions		
Reading	4	Match images to words	10 (abcd) MC questions	30%
	5	Fill in the gaps	10 (abcd) MC questions	
	6	Text 1	5 (abcd) MC questions	
	7	Text 2	5 (abcd) MC questions	
Writing	8	Complete a form		30%
	9	Write 5 sentences		
	10	Write 10 sentences		
	11	Fill in the gaps	7 (abcd) MC questions	
Speaking	1	Response accuracy		20%
	2	Register, accuracy, pronunciation, effective communication		
	3	Vocabulary, grammar, pronunciation, listening and responding		

A2

	PART	TASK TYPE		SCORE
Listening	1	10 (abcd) MC questions		20%
	2	10 (abcd) MC questions		
	3	10 (abcd) MC questions		
Reading	4	Match images to words	10 (abcd) MC questions	30%
	5	Fill in the gaps	10 (abcd) MC questions	
	6	Text 1	5 (abcd) MC questions	
	7	Text 2	5 (abcd) MC questions	
Writing	8	Complete a form		30%
	9	Write 5 sentences		
	10	Write 10 sentences		
	11	Fill in the gaps	7 (abcd) MC questions	
Speaking	1	Response accuracy		20%
	2	Register, accuracy, pronunciation, effective communication		
	3	Vocabulary, grammar, pronunciation, listening and responding		

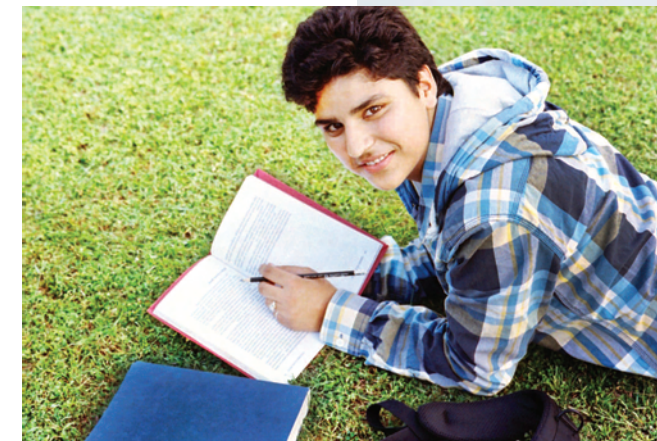
Call us on **+ (0) 114 227 0500** or visit **www.nocn.org.uk** to find out how we can help you. For enquiries within Greece call us on **+30 210 3300011**.

B1

	PART	TASK TYPE	SCORE
Listening	1	10 (abcd) MC questions	20%
	2	10 (abcd) MC questions	
	3	10 (abcd) MC questions	
Reading	4	Text 1	30%
	5	Text 2	
	6	Text 3	
	7	Text 4	
Writing	8	75-100 words	30%
	9	100-125 words	
Speaking	1	Response accuracy	20%
	2	Register, accuracy, pronunciation, effective communication	
	3	Vocabulary, grammar, pronunciation, listening and responding	

B2

	PART	TASK TYPE	SCORE
Listening	1	10 (abcd) MC questions	20%
	2	10 (abcd) MC questions	
	3	10 (abcd) MC questions	
Reading	4	Text 1	30%
	5	Text 2	
	6	Text 3	
	7	Text 4	
Writing	8	100-150 words	30%
	9	150-200 words	
Speaking	1	Response accuracy	20%
	2	Register, accuracy, pronunciation, effective communication	
	3	Vocabulary, grammar, pronunciation, listening and responding	



Call us on + (0) 114 227 0500 or visit www.nocn.org.uk to find out how we can help you.
For enquiries within Greece call us on +30 210 3300011.

**C1**

	PART	TASK TYPE		SCORE
Listening	1	10 (abcd) MC questions		20%
	2	10 (abcd) MC questions		
	3	10 (abcd) MC questions		
Reading	4	Text 1	10 (abcd) MC questions	30%
	5	Text 2	10 (abcd) MC questions	
	6	Text 3	5 (abcd) MC questions	
	7	Text 4	5 (abcd) MC questions	
Writing	8	150-200 words		30%
	9	250-300 words		
Speaking	1	Response accuracy		20%
	2	Register, accuracy, pronunciation, effective communication		
	3	Vocabulary, grammar, pronunciation, listening and responding		

C2

	PART	TASK TYPE		SCORE
Listening	1	10 (abcd) MC questions		20%
	2	10 (abcd) MC questions		
	3	10 (abcd) MC questions		
Reading	4	Text 1	10 (abcd) MC questions	30%
	5	Text 2	10 (abcd) MC questions	
	6	Text 3	5 (abcd) MC questions	
	7	Text 4	5 (abcd) MC questions	
Writing	8	200-250 words		30%
	9	250-300 words		
Speaking	1	Response accuracy		20%
	2	Register, accuracy, pronunciation, effective communication		
	3	Vocabulary, grammar, pronunciation, listening and responding		

Call us on + (0) 114 227 0500 or visit www.nocn.org.uk to find out how we can help you.
For enquiries within Greece call us on +30 210 3300011.

NOCN Qualifications in ESOL International

The NOCN ESOL International qualifications offer a comprehensive test of English skills in four skills: spoken language, reading, writing and listening. The examinations are based around real life scenarios which are designed to relate to the four CEF domains (public, personal, educational and occupational) and the qualifications allow the learner to progress towards proficiency in the English language.

The qualifications are designed for:

- Non-native speakers of English worldwide, including in the UK
- People needing English for their everyday or working life
- Learners who require externally recognised certification of their levels in English
- Those who are attending English language courses over either a short period of time or a longer course leading to proficiency in English.

This qualification is suitable for learners aged 16 years or over, but may be used with learners below the age of 16.

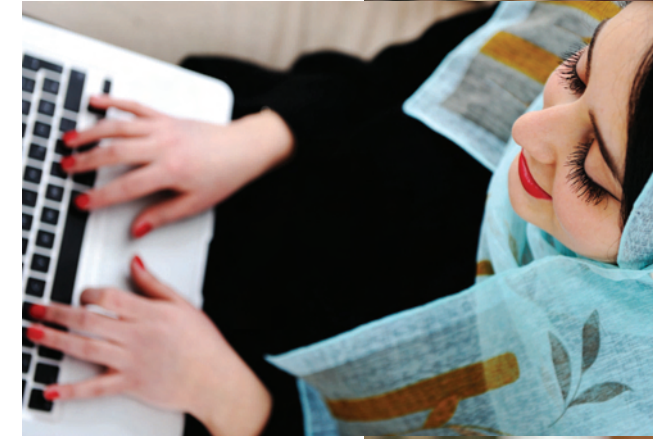
This qualification specification provides a comprehensive introduction to the NOCN series of examinations in ESOL International.

In addition, NOCN has developed sample examination materials and mark schemes for each level of the qualification, which include the criteria for a pass at each level, and a guide for interlocutors to ensure that they fully understand the examination methods for spoken English and their part in ensuring that the examinations are administered correctly.

There are separate examinations in Listening, Reading, Writing and Speaking available through NOCN at six levels:

- Beginner (equivalent to A1 on the Common European Framework)
- Improver (equivalent to A2 on the Common European Framework)
- Intermediate (equivalent to B1 on the Common European Framework)
- Independent User (equivalent to B2 on the Common European Framework)
- Advanced (equivalent to C1 on the Common European Framework)
- Proficient (equivalent to C2 on the Common European Framework).

This qualification is suitable for learners aged 16 years or over, but may be used with learners below the age of 16. The content of the examinations is designed to reflect the interests and needs of adult learners at all levels.





Structure of the qualification

To achieve the qualification, a learner must take the four mandatory units of Listening, Reading, Writing and Speaking. Learners may achieve unit certification for all units.

Assessment

To gain an overall grade for the qualification the marks are calculated by weighting the Speaking at 20%, Listening at 20%, Reading at 30% and Writing at 30%. The overall mark that candidates must score in order to pass the exam is 51%.

The grades available are:

- 50% or less: Refer
- 51% to 64%: Pass
- 65% to 79%: Merit
- 80% and above: Distinction.

Referrals

Each unit of the qualification is assessed separately and a grade given for each unit. If a learner is referred on one or more units, the units that have been passed in one examination session will be banked and only the units(s) that has been referred will have to be undertaken again in the next session.

Guided Learning Hours

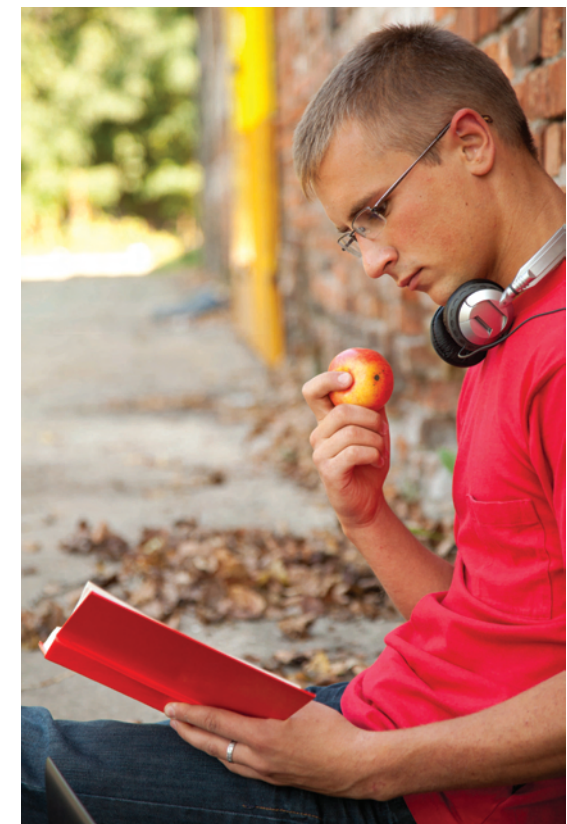
It is recommended that the qualification should be delivered over approximately 300 guided learning hours.

Entry Requirements

There are no formal entry requirements for learners undertaking this qualification.

Progression Opportunities

Learners who complete the lower levels of the qualifications may progress to higher levels of the qualification. In addition, learners may progress onto vocational or academic learning in an English-speaking environment or work in an English-speaking environment.



Features of the NOCN Qualifications in ESOL International

Externally Marked Examinations

Examinations can be taken twice a year in May and December.

Certification

Results and certificates are issued within eight weeks of the test date.

Externally marked examinations

All examinations are externally set and marked.

All spoken examinations are assessed within the centre, using an interlocutor appointed and trained by NOCN.

The examination is conducted one to one. The interlocutor must be a suitably qualified and experienced English teacher.

Real world situations

All examinations are task based and linked to everyday situations.

Test Duration

CEF LEVELS	NOCN LEVELS	WRITTEN UNITS DURATION (Listening, Reading, Writing)	SPOKEN UNIT DURATION
A1	Beginner	2 hours and 30 minutes	6 minutes
A2	Improver	2 hours and 30 minutes	7 minutes
B1	Intermediate	2 hours and 30 minutes	9 minutes
B2	Independent User	2 hours and 30 minutes	10 minutes
C1	Advanced	3 hours	12 minutes
C2	Proficient	3 hours	15 minutes

Call us on + (0) 114 227 0500 or visit www.nocn.org.uk to find out how we can help you.
For enquiries within Greece call us on +30 210 3300011.



Call us on **+ (0) 114 227 0500** or visit **www.nocn.org.uk** to find out how we can help you.
For enquiries within Greece call us on **+30 210 3300011**.