

INTERNATIONAL
ACADEMIC
SEMINAR
PROGRAMME



Information for International Schools

2022/23



01

Welcome

The Academic Seminar Programme (ASP) prepares Year 9 - Year 12 secondary school students for academic success at the world's top universities.

Access to top universities is very competitive, and students are often required to demonstrate how they have gone above and beyond the school curriculum. The ASP allows Year 9 to 12 students to do this by attending short, thought-provoking courses based on cutting-edge PhD research that have been proven to boost academic engagement.

What is the ASP?

Each ASP course consists of a series of six-seminars. Each course is exclusively designed and seminars are delivered in English by Academic Supervisors – PhD experts - based at prestigious UK and/or Irish universities, such as the University of Oxford, the University of Cambridge, Trinity College Dublin and University College London (UCL). Seminars are based on the academic supervisor's unique PhD research.

The programme is delivered to small groups, replicating university-style lectures at a research-intensive university, with an extended final assignment, and personalised academic advice during one-to-one feedback seminars.

In addition to developing deep subject knowledge through their academic courses, students attend university enrichment workshops ranging from undergraduate study skills to bespoke admissions and applications advice, and are given access to high-quality subject specific resources. These workshops are delivered by qualified teachers and university academics that work for AccessEd.

This brochure explains the programme in more detail. For further information about the programme or to enquire about enrolment at your school, please contact us at anuj.dhanak@access-ed.ngo.

Yours sincerely,

Katie Booth
Managing Director, AccessEd
University of Cambridge Scholar



02

What makes ASP different?

ASP puts students in charge of their own learning. Courses are led by exceptional PhDs who are conducting cutting edge research at the world's top universities: Oxford, Cambridge and Trinity College Dublin and more.



INDEPENDENT LEARNING

Supported and guided by our expert PhDs, students take charge of their own learning.



RESEARCH STYLE APPROACH

Unlike most of our early education experiences, ASP encourages students to question everything. Rather than learning to recite facts, ASP challenges evidence, encourages debate and promotes voicing opinions.



ENRICHMENT WORKSHOPS

Being in charge comes with responsibilities. It is the same with being in charge of your own learning. So we build in workshops for study and stress management.

03

What will pupils do?



The activities we would deliver are as follows:

- A series of 6 one-hour, PhD led, personalised seminars
- Seminars are in one of three areas: STEM, Social Sciences or Arts and Humanities and delivered in university style lectures
- Final assignment, graded with university-level mark scheme
- 1-2-1 seminar to develop a personalised action plan
- Study skills workshop
- Personal development workshop
- Tutorials that replicate teaching at research-intensive universities
- Bespoke universities admissions and applications advice
- University tour and graduation event

Students will also:

- Develop deep subject knowledge
- Receive high quality subject specific resources that are designed to support and challenge them
- Develop core academic competencies – critical thinking, meta-cognition, written and verbal communication, enhanced subject knowledge
- Receive a certificate that they can use on their university applications



Students' journey



LAUNCH EVENT

Pupils begin their Scholars journey with a Launch Event. Students are introduced to their PhD tutor, learn about university life from university and AccessEd staff, and set out expectations for the programme.



IN-SCHOOL TUTORIALS

Following the Launch Event, PhD tutors run weekly in-school tutorials with small groups of six to twelve pupils, replicating teaching at a research-intensive university. To emulate an authentic university learning environment, there is a focus on university-style pedagogy including independent research, critical thinking and higher-order questioning. All based on the PhD's unique research!



ENRICHMENT WORKSHOPS

Students attend wrap-around workshops, supporting the all-important skills required to progress to competitive universities. These include resilience and well-being, critical thinking, study skills and bespoke university applications advice.



FINAL ASSIGNMENT

The in-school tutorials culminate in pupils completing a challenging university-style assignment, which is marked by their PhD tutors and moderated by AccessEd. Tutors then return to schools for a final feedback session. Grades are given as university-style marks, with pupils receiving a 1st, 2.1, 2.2 or a 3rd.



GRADUATION EVENT

All pupils who submit their final assignment are invited to a Graduation Event with key note speakers and a certification ceremony to celebrate their achievements.

04

What subjects can students study?

When undertaking cutting edge research our PhDs question everything. We encourage our ASP students to do the same thing. This means that the research projects are inevitably interdisciplinary, switching between subject areas to find the answers to the questions.

Rather than offer specific subjects, we present ASP courses in the following three areas:

STEM

Science, Technology,
Engineering and Maths



Social Sciences

Psychology, Sociology
Anthropology, Economics
and Politics



Arts & Humanities

Literature, Philosophy, History,
Archaeology, Geography, Law,
Religion, and Art.



05

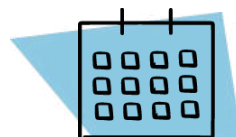
How is the ASP Delivered?

Making the transition from school to university can be a big jump. By giving students the chance to work under university-like conditions, on cutting edge research with world class PhDs, we ensure a smooth journey. We also add the extra comfort of stress and study management workshops.



Flexible delivery

We can deliver ASP in a number of ways to suit your needs.



HOLIDAY COURSES

We can bring our handpicked PhDs to your location, in person or online via video conference. Holiday courses can last either one or two weeks.



TERM TIME

ASP also works well delivered as an extra curricular activity. It can be delivered after school or during a lunchtime. We are also happy to discuss incorporating ASP into your curriculum as a 5 or 6 week programme.



GROUP SIZE

To mirror a typical university study group, we limit each group to 12 students. This allows greater interaction between PhD tutors and students.



STUDENT CAPACITY

Up to 10 groups at once (120 students). Bespoke options can be discussed, including entire year groups.



06

Typical timeline

From the first launch event to the final graduation, ASP students go on a journey of discovery in addition to checking in with their PhD mentors and AccessEd staff at regular intervals.

ASP is extremely flexible. Each course is a bespoke creation to meet your needs. We can deliver in person or online. Delivery can be during term time, in holidays, as part of the curriculum or as an extra curricular activity. Courses can be 1 or 2 weeks, or even delivered over a full term.

Below is a sample timetable for an online ASP delivered during term time over 2 weeks.

Week 1

	Monday	Tues	Wednesday	Thurs	Friday
14:30 - 15:30	Launch event		Seminar 2		Personal Development Workshop
15:30 - 16:30	Seminar 1		Study Skills Workshop		Seminar 3
After school (1 hour daily)	Independent Learning		Independent Learning		Independent Learning

Week 2

	Monday	Tues	Wednesday	Thurs	Friday
14:30 - 15:30	Seminar 4		Supervisor Q&A		Seminar 6
15:30 - 16:30	Supervisor Q&A		Seminar 5		Graduation Event
After school (1 hour daily)	Independent Learning		Independent Learning		Course Ends

07

Pupil benefits and outcomes



ASP gives students an edge over their peers. Our meticulous and robust evaluations show an average increase in University Readiness of up to 10% after completing ASP.

We measure the following metrics:

Meta-Cognition

The ability to think about one's own learning.



Self-Efficacy

The belief that students can achieve future goals.



Motivation

The factors that drive students to behave in particular ways.




University Readiness

The knowledge students have around higher education and how to access it.



"I had an amazing experience."

Pupil on 2019-20 programme.

The background of the image is a blurred photograph of a classroom. Several students are visible, some sitting at desks and others standing, though their features are out of focus. The colors are muted, with a lot of greys and soft blues, suggesting an indoor school environment.

**“I would highly recommend the programme.
It is engaging, develops key skills and
promotes university awareness,
independent learning and accountability.”**

Teacher from a school on the 2020-21 programme

Case study



Taipea European School
MAY 2021



STEM STREAM

"The Impact of Sports Concussion on Brain Health"
Neuroscience PhD Researcher

HUMANITIES STREAM

"In Defence of Trash: The Power of Pop Lit"
English Literature PhD Researcher

"It has been absolutely wonderful. You can see from all the feedback from our students how much they really, truly enjoyed this journey, this learning experience. This has been something that they will move forward with when they one day go to university as well. It has really gone so smoothly. It was just effortless".

More Able Co-ordinator

"Thank you again for everything. The course was excellent and the students gained massively because of it".

Deputy Head Teacher

"What I got the most from the programme was that it was more fun, interesting and challenging compared to what we usually learn in class".

Year 9 student

95%

of students agreed with the statement that they found the content stimulating and interesting

94%

of students agreed with the statement that they felt more prepared for university or onward study as a result of participation

Impact data showed...

11.6%

increase in university readiness skills of participating pupils pre and post programme

08

Cost to schools

AccessEd is an NGO and a registered charity. We generate revenue from commercial activities and ethical fundraising. That revenue goes to help young people across the globe, in challenging circumstances, access further education. We strive to offer value for money and use that money to add value to others. Below are our suggested prices.

We would like to form meaningful partnerships with schools and colleges across the globe. If you want to help your students be better prepared for university, get in touch to start a conversation.



We would be delighted to discuss ASP options for your school or college. For more information about the ASP please contact us at:
anuj.dhanak@access-ed.ngo

24+
Students

£620 + VAT
Per Student

36+
Students

£590 + VAT
Per Student

48+
Students

£550 + VAT
Per Student

96+
Students

£450 + VAT
Per Student





**Kemp House, 160 City Road,
London, EC1V 2NX**

**AccessEd is a charity registered in
England and Wales (#1186355)**